

ASM0115 – Operating Instructions

The ASM0115 module is for use in LED Roadway Lighting Ltd. end product designs only. It is not intended for resale or use as an independent product. Please refer to the following instructions when designing with the ASM0115.

- 1) The attached document “SPZB32W1x1.4.pdf” is an ST Microelectronics datasheet describing the module including the operating characteristics of the module. The ASM0115 is identical to the SPZB32W1C1.4. This datasheet should be referenced when designing the host interface for use with this module.
- 2) The end device must use the model 47950-0001 antenna from Molex or an antenna of the same design with equivalent or lower gain.
- 3) **Canada (IC)**
You must include Industry Canada Regulatory Information on the end product label as well as in the product manual.

Label Information

Equipment is subject to certification under the applicable RSS(s), shall be permanently labelled on each item, or as an inseparable combination.

The label must contain the following information for full compliance:

The Industry Canada certification label of a module shall be clearly visible at all times when installed in the host device, otherwise the host device must be labelled to display the Industry Canada certification number of the module, preceded by the words “Contains transmitter module”, or the word “Contains”, or similar wording expressing the same meaning, as follows:

“Contains IC: 12047A-0115”

The applicant for equipment certification of the module shall provide with each unit of the module either a label such as described above, or an explanation and instructions to the user as to the host device labelling requirements.

IMPORTANT: This equipment for which a certificate has been issued is not considered certified if it is not properly labelled. The information on the Canadian label can be combined with the manufacturer’s other labelling requirements.

Manual Information

The End User Product Manual must contain the following information for full compliance:

Operation is subject to the following two conditions:

- (1) this device may not cause harmful interference, and
- (2) this device must accept any interference received, including interference that may cause undesired operation.

Le présent appareil est conforme aux CNR d'Industrie Canada applicables aux appareils radio exempts de licence. L'exploitation est autorisée aux deux conditions suivantes :

- (1) l'appareil ne doit pas produire de brouillage, et
- (2) l'utilisateur de l'appareil doit accepter tout brouillage radioélectrique subi, même si le brouillage est susceptible d'en compromettre le fonctionnement.

IMPORTANT: To reduce potential radio interference to other users, the antenna type and its gain should be so chosen that the equivalent isotropically radiated power (e.i.r.p.) is not more than that permitted for successful communication. The antenna used with this module must be installed to provide a separation distance of at least 20cm from all persons, and must not transmit simultaneously with any other antenna or transmitter.

Conformément à la réglementation d'Industrie Canada, le présent émetteur radio peut fonctionner avec une antenne d'un type et d'un gain maximal (ou inférieur approuvé pour l'émetteur par Industrie Canada. Dans le but de réduire les risques de brouillage radioélectrique à l'intention des autres utilisateurs, il faut choisir le type d'antenne et son gain de sorte que la puissance isotrope rayonnée équivalente (p.i.r.e) ne dépasse pas l'intensité nécessaire à l'établissement d'une communication satisfaisante.

IMPORTANT: The installer of this radio equipment must ensure that the antenna is located or pointed such that it does not emit RF field in excess of Health Canada limits for the general population. Consult Safety Code 6, obtainable from Health Canada's website www.hc-sc.gc.ca/rpb.

4) United States (FCC)

You must include FCC Regulatory Information on the end product label as well as in the product manual.

Label Information

This equipment complies with Part 15 of the FCC rules and regulations.

To fulfill FCC Certification requirements, and OEM manufacturer must comply with the following regulations: (1) The modular transmitter must be labelled with its own FCC ID number, and, if the FCC ID number is not visible when the module is installed inside another advice, then the outside of the device into which the module is installed must also display a label referring to the enclosed module.

This exterior label can use wording such as the following:

Example of label required for OEM product: "Contains FCC ID:2ACR30115"

WARNING: The Original Equipment Manufacturer (OEM) must ensure that the OEM modular transmitter must be labelled with its own FCC ID number. This includes a clearly visible label on the outside of the final product enclosure that displays the content shown below. If the FCC ID is not visible then the outside of the device into which the module is installed must also display a label referring to the enclosed equipment.

Manual Information

The End User Product Manual must contain the following information for full compliance:

IMPORTANT: This equipment complies with Part 15 of the FCC Rules. Operation is subject to the following two conditions:

- (1) this device may not cause harmful interference, and
- (2) this device must accept any interference received, including interference that may cause undesired operation (FCC 15.19). The internal / external antenna(s) used for this mobile transmitter must provide a separation distance of at least 20 cm from all persons and must not be co-located or operating in conjunction with any other antenna or transmitter.

IMPORTANT: The module is limited to LED Roadway installations only. OEM integrators are responsible for ensuring that the end-user has no manual instructions to remove or install module. The module is limited to installations in fixed applications, according to Part 2.1091(b). Separate approval is required for all other operating configurations, including portable configurations with respect to Part 2.1093 and different antenna configurations.

IMPORTANT: OEM integrators must include the following instructions and statements in the user manual (i.e. end product):

- (1) statements and labeling as required per Part 15.19 and 15.21, and
- (2) end-users must be provided with transmitter/antenna installation requirements and operating conditions for satisfying RF exposure compliance:
 - (i) a separate section should clearly state “FCC RF Exposure requirements”,
 - (ii) Required operating conditions for end users,
 - (iii) antenna or transmitter installation requirements where relevant (i.e. “The internal / external antenna(s) used for this transmitter must provide a separation distance of at least 20 cm from all persons and must not be co-located or operating in conjunction with any other antenna or transmitter.”)

RF Exposure Evaluation

FCC 1.1310 states the criteria listed in the table below shall be used to evaluate the environmental impact of human exposure to radiofrequency (RF) radiation as specified in Section 1.1307(b), except in the case of portable devices which shall be evaluated according to the provisions of Section 2.1093. Further information on evaluating compliance with these limits can be found in the FCC's OST/OET Bulletin Number 65, "Evaluating Compliance with FCC-Specified Guidelines for Human Exposure to Radiofrequency Radiation".

Frequency Range (MHz)	Electric Field Strength (V/m)	Magnetic Field Strength (A/m)	Power Density (mW/cm ²)	Average Time (s)
(A) Limits for Occupational/Control Exposures				
300-1500	-	-	F/300	6
1500-100,000	-	-	5	6
(B) Limits for General Population/Uncontrolled Exposures				
300-1500	-	-	F/1500	6
1500-100,000	-	-	1	30

TABLE 1 - POWER DENSITY LIMITS

1.1 EUT OPERATING CONDITION

- The antenna used for this product is a Flexilbe PCB trace antenna connected to a UFL Connector and is designed for a Peak antenna gain of 3.5 dBi (peak)
- Highest measured conducted output level = 19.6dBm
- From Table 1, the Maximum Power Density safe exposure level for General Population Uncontrolled Exposure of 30 Seconds for the frequency range of 2.4 to 2.4835GHz is 1mW/cm².
-

Conducted Output Power (dBm)	Max Antenna Gain	Max EIRP (mW)	Power Density Limit Allowed (mW/cm ²)	Safe distance (cm)
19.6	3.5	204	1	4.1

1.2 RF EXPOSURE EVALUATION DISTANCE CALCULATION

$$d = \sqrt{\left(\frac{EIRP}{4\pi S}\right)}$$

where: d = Distance to the center of radiation of the antenna (cm) for the allowable Power Density
 S = Allowable Power density Limit (mW/cm²)
 EIRP = Equivalent isotropically radiated power (mW) = 10^[TX Power (dBm) + Ant Gain (dBi)/10]

As shown above, the minimum distance where the MPE limit is reached is 4.1 cm from the EUT with the 3.5dBi antenna.

It is recommended that the unit is positioned so that the typical distance from the antenna to the end user is 20cm or greater.



Leading the LED technology wave



SPZB32Wxy1.z

802.15.4 ZigBee® modules based on the STM32W chipset

Features

- 2.4 GHz IEEE 802.15.4-compliant SMD modules based on the ST STM32W chipset solution featuring:
 - Integrated 2.4 GHz transceiver
 - PHY and MAC IEEE 802.15.4 features
 - Integrated ARM® Cortex-M3 core
 - Integrated embedded Flash and RAM
 - Integrated encryption (AES-128) accelerator
- Power amplified RF performances:
 - Up to 20 dBm nominal TX output power
 - Up to 105 dBm RX sensitivity
- Robust Wi-Fi and Bluetooth® coexistence
- 16 channels (IEEE 802.15.4 channel 11 to 26)
- Multiple configurable interfaces available (UART, SPI, I2C, ADC, GPIOs)
- Industry standard JTAG programming
- Onboard 24 MHz and 32.768 kHz stable Xtal
- Less than 2 μ A typ power consumption in deep sleep mode (32.768 Xtal)
- Multiple antenna options: integrated antenna or integrated UFL connector
- Multiple Protocol Stack Options
- Single voltage supply (2.1 to 3.6 V)
- FCC and CE compliant qualified
- Small Form Factor : 16.4 x 26.5 mm
- Operating temperature range: -40 °C to +85 °C



Contents

1	Description	3
2	RoHS compliance	4
3	Application	4
4	Block diagram	5
5	Pin settings	6
5.1	Pin connections	6
5.2	Pin description	7
6	Electrical characteristics	11
6.1	Absolute maximum ratings	11
6.2	Recommended operating conditions	11
6.3	DC electrical characteristics	11
6.4	Digital I/O specifications	12
6.5	RF electrical characteristics	12
7	Mechanical dimensions	13
8	Soldering	14
9	Product approvals	15
9.1	FCC approvals	15
9.1.1	FCC labeling requirements	16
9.2	European certification	16
10	Ordering information scheme	17
11	Revision history	18

1 Description

SPZB32Wxy1.z is a series of ready-to-use IEEE 802.15.4/ZigBee compliant and power amplified RF modules optimized for embedded applications that require low data rate communications and high transmission range capabilities based on the STM32W single chip that integrates a 2.4 GHz, IEEE 802.15.4-compliant transceiver together with an ARM® Cortex embedded processor .

The modules are very compact and enable OEMs to easily add wireless capabilities to electronics devices by optimizing time-to-market, cost, size, and consumption of their target applications. No RF experience or expertise is required to add this powerful networking capability to the final product.

24 MHz high stability Xtal is available aboard the modules to perform the timing requirements as per IEEE 802.15.4/ZigBee® specifications; additionally a 32.768kHz Xtal is also provided onboard for low power operation.

A single supply voltage is requested to power the modules. The supply is in the range of 2.1 to 3.6 V. The voltage supply also determines the I/O ports level allowing an easy interface with additional peripherals.

An advanced solution integrating PA and LNA in a single package is aboard to ensure excellent power transmission and receiver sensitivity performances.

To support user defined applications, a number of peripherals such as GPIO, UART, I2C, ADC and general purpose timers are available and user selectable.

The size and footprint of this series of modules is equivalent to that of the series SPZB32Wxy2.z to facilitate the evaluation of the different range options on the target application.

The series groups multiple versions that differ in terms of memory size , antenna (ceramic antenna or integrated u.fl connector for the connection of an external antenna) and stacks options (ZigBee, RF4CE, SimpleMAC).

The SPZB32W1y1.z versions are based on the STM32W108CB chipset integrating 128 kB of embedded flash memory and 8 kB of RAM available for data and program storage.

For technical details on the STM32W108CB chipset refer to the related datasheet. For technical details on the supported stacks refer to the related user guide and application notes.

2 RoHS compliance

ST modules are RoHS compliant and comply with ECOPACK® norms.

3 Application

- Smart energy applications
- Machine2Machine industrial control
- Wireless sensor networks
- Home/building automation
- Smart appliances
- Wireless alarms and security systems
- Lighting control
- Remote monitoring

4 Block diagram

Figure 1. SPZB32WxA1.z block diagram

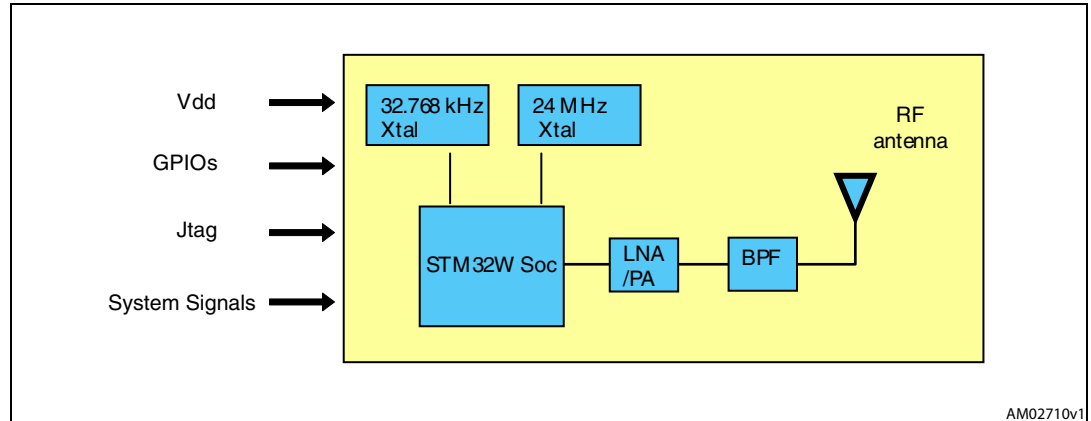
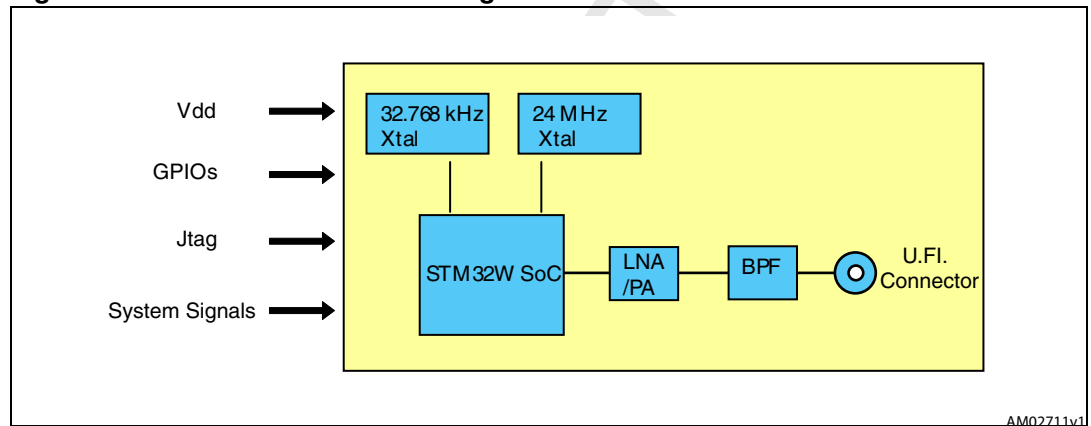


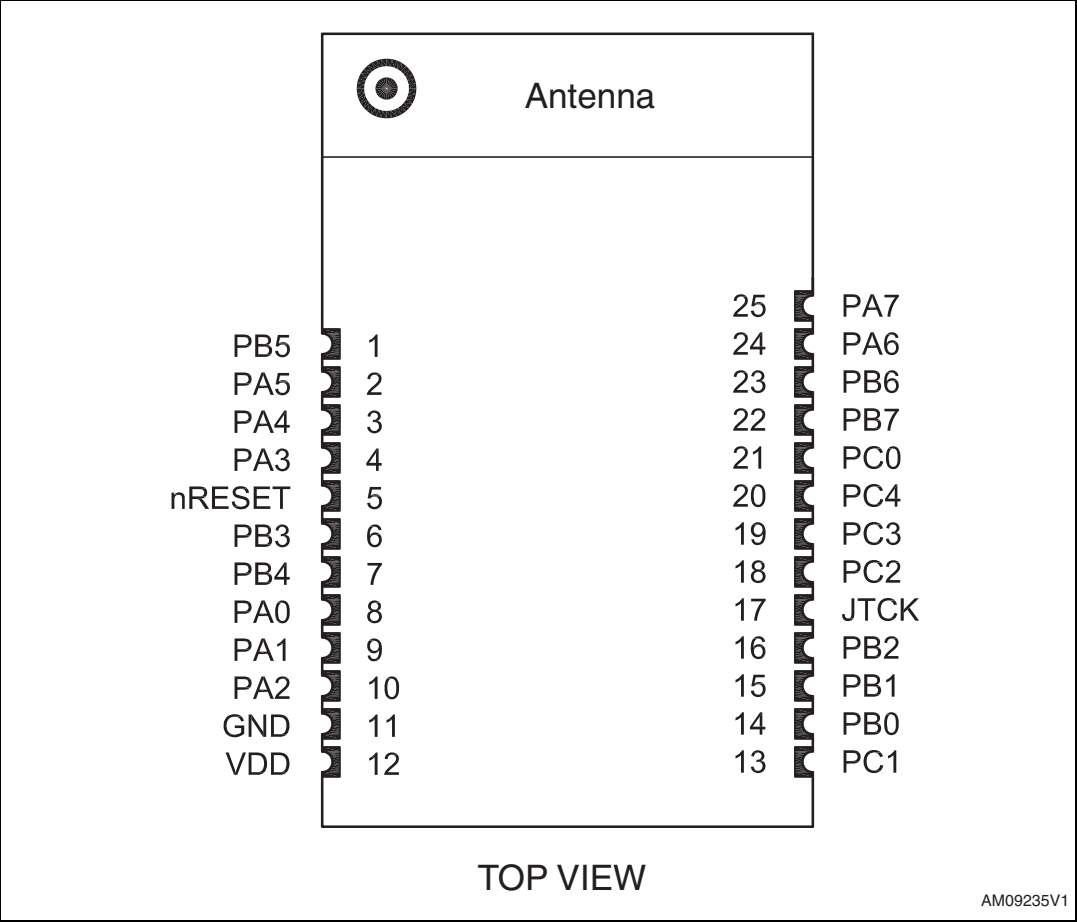
Figure 2. SPZB32WxC1.z block diagram



5 Pin settings

5.1 Pin connections

Figure 3. Pin connection diagram





5.2 Pin description

Table 1. Pin description

Module pin n°	Pin name	Direction	STM32W pin	Description
1	PB5	I/O	43	Digital I/O
	ADC0	Analog	43	ADC Input 0
	TIM2CLK	I	43	Timer 2 external clock input
	TIM1MSK	I	43	Timer 1 external clock mask input
2	PA5	I/O	27	Digital I/O
	ADC5	Analog	27	ADC Input 1
	PTI_DATA	O	27	Frame signal of PTI (Packet Trace Interface)
	nBOOTMODE	I	27	Embedded serial bootloader activation out of reset
	TRACEDATA3	O	27	Synchronous CPU trace data bit 3
3	PA4	I/O	26	Digital I/O
	ADC4	Analog	26	ADC Input 0
	PTI_EN	O	26	Frame signal of PTI (Packet Trace Interface)
	TRACEDATA2	O	26	Synchronous CPU trace data bit 2
4	PA3	I/O	25	Digital I/O
	SC2nSSEL	I	25	SPI SLAVE SELECT of Serial Controller 2
	TIM2_CH2	I/O	25	Timer 2 channel 2 output (or input - Disable remap with TIM2_OR[5])
	TRACECLK	O	25	Synchronous CPU trace clock
5	nRESET	I	12	Active low reset (an internal pull-up of 30 kohm typ. is provided)
6	PB3	I/O	19	Digital I/O
	UART_CTS	I	19	UART CTS handshake of Serial Controller 1
	SC1SCLK	I/O	19	SPI slaver clock of Serial Controller SC1 / SPI master clock of Serial Controller SC1
	TIM2_CH3	I/O	19	Timer 2 channel 3 input / Timer 2 channel 3 output

**Table 1. Pin description (continued)**

Module pin n°	Pin name	Direction	STM32W pin	Description
7	PB4	I/O	20	Digital I/O
	UART_RTS	O	20	UART RTS handshake of Serial Controller 1
	TIM2_CH4	I/O	20	Timer 2 channel 4 input / Timer 2 channel 4 output
	SC1nSSEL	I	20	SPI slave select of Serial Controller 1
8	PA0	I/O	21	Digital I/O
	SC2MOSI	O	21	SPI Master data out of Serial Controller 2
	SC2MOSI	I	21	SPI Slave data in of Serial Controller 2
	TIM2_CH1	I/O	21	Timer 2 channel 1 input / Timer 2 channel 1 output
9	PA1	I/O	22	Digital I/O
	SC2MISO	I	22	SPI Master data in of Serial Controller 2
	SC2MISO	O	22	SPI Slave data out of Serial Controller 2
	SC2SDA	I/O	22	TWI (I2C) data of Serial Controller 2
	TIM2_CH3	I/O	22	Timer 2 channel 3 input / Timer 2 channel 3 output
10	PA2	I/O	24	Digital I/O
	SC2SCLK	O	24	SPI Master clock of Serial Controller 2
	SC2SCLK	I	24	SPI Slave clock of Serial Controller 2
	SC2SCL	I/O	24	TWI (I2C) clock of Serial Controller 2
	TIM2_CH4	I/O	24	Timer 2 channel 4 input / Timer 2 channel 4 output
11	GND	--	49	Ground
12	VDD	Power	16,23,28,37	Input power supply
13	PC1	I/O	38	Digital I/O
	ADC3	Analog	38	ADC Input 3
	SWO	O	38	Serial Wire Output asynchronous trace output to debugger
	TRACEDATA0	O	38	Synchronous CPU trace data bit 0

**Table 1. Pin description (continued)**

Module pin n°	Pin name	Direction	STM32W pin	Description
14	PB0	I/O	36	Digital I/O
	VREF (O/I)	Analog	36	ADC reference output / ADC reference input
	TIM1CLK	I	36	Timer 1 external clock input
	TIM2MSK	I	36	Timer 2 external clock mask input
	IRQA	I	36	External interrupt source A
	TRACECLK	O	36	Synchronous CPU trace clock
15	PB1	I/O	30	Digital I/O
	SC1TXD	O	30	UART transmit data of Serial Controller 1
	SC1MOSI / SC1MISO	O	30	SPI master data out of Serial Controller 1 / SPI slave data out of Serial Controller 1
	SC1SDA	I/O	30	TWI (I2C) data of Serial Controller 1
	TIM2_CH1	I/O	30	Timer 2 channel 1 input / Timer 2 channel 1 output
16	PB2	I/O	31	Digital I/O
	SC1RXD	I	31	UART receive data of Serial Controller 1
	SC1MISO / SC1MOSI	I	31	SPI master data in of Serial Controller SC1 / SPI slave data in of Serial Controller 1
	SC1SCL	I/O	31	TWI (I2C) clock of Serial Controller 1
	TIM2_CH2	I/O	31	Timer 2 channel 2 input / Timer 2 channel 2 output
17	JTCK	I	32	JTAG clock input from debugger
	SWCLK	I/O	32	Serial Wire clock input/output with debugger
18	PC2	I/O	33	Digital I/O
	JTDO	O	33	JTAG data out to debugger
	SWO	O	33	Serial Wire Output asynchronous trace output to debugger
19	PC3	I/O	34	Digital I/O
	JTDI	I	34	JTAG data in from debugger
20	PC4	I/O	35	Digital I/O
	JTMS	I	35	JTAG mode select from debugger
	SWDIO	I/O	35	Serial Wire bidirectional data to/from debugger

**Table 1. Pin description (continued)**

Module pin n°	Pin name	Direction	STM32W pin	Description
21	PC0	I/O	40	Digital I/O (high current)
	JRST	I	40	JTAG reset input from debugger
	TRACEDATA1	O	40	Synchronous CPU trace data bit 1
	IRQD	I	40	External interrupt source D
22	PB7	I/O	41	Digital I/O
	TIM1_CH2	O	41	Timer 1 channel 2 output
	TIM1_CH2	I	41	Timer 1 channel 2 input
	IRQC	I	41	External interrupt source C
	ADC2	I	41	ADC input 2
23	PB6	I/O	42	Digital I/O
	TIM1_CH1	O	42	Timer 1 channel 1 output
	TIM1_CH1	I	42	Timer 1 channel 1 input
	IRQB	I	42	External interrupt source B
	ADC1	Analog	42	ADC input 1
24	LNA/ENABLE	I	29	Digital input, module firmware dependent, externally forced by the user dedicated firmware. This signal is dedicated to manage the SIGE-SE2432L internal LNA. (HIGH= internal LNA enabled, LOW= internal LNA disabled).
	PA6/LNA_ENABLE	O	29	Digital output, module firmware dependent, internally forced by application dedicated firmware. This signal is dedicated to manage the SIGE-SE2432L internal LNA. (HIGH= internal LNA enabled, LOW= internal LNA disabled).
25	RF_STANDBY	I	18	Digital input, module firmware dependent, externally forced by the user dedicated firmware. This signal is dedicated to manage the SIGE-SE2432L front-end STANDBY state. (HIGH= Front-end enabled, LOW= Front-end forced in the STANDBY state).
	PA7/RF_STANDBY	O	18	Digital output, module firmware dependent, internally forced by application dedicated firmware. This signal is dedicated to manage the SIGE-SE2432L front-end STANDBY state. (HIGH= Front-end enabled, LOW= Front-end forced into STANDBY state).

6 Electrical characteristics

6.1 Absolute maximum ratings

Table 2. Absolute maximum ratings

Symbol	Parameter	Min.	Max.	Unit
V_{DD}	Module supply voltage	- 0.3	3.6	V
V_{in}	Input voltage on any digital pin	- 0.3	$V_{DD} + 0.3$	V
T_{stg}	Storage temperature	-40	+85	°C
T_{sld}	Soldering temperature < 10s		250	°C

6.2 Recommended operating conditions

Table 3. Recommended operating conditions

Symbol	Parameter	Conditions	Min.	Typ.	Max.	Unit
V_{DD}	Module supply voltage	$-40\text{ °C} < T < +85\text{ °C}$	2.1	3.3	3.6	V
T_{stg}	Operating ambient temperature		-40		+85	°C

6.3 DC electrical characteristics

Table 4. DC electrical characteristics

Symbol	Parameter	Conditions	Min.	Typ.	Max.	Unit
IRX	RX current	$V_{DD} = 3.3\text{ V}$, $T = 25\text{ °C}$	-	20	-	mA
ITX	TX current	$P_o = 18\text{ dBm}$, $V_{DD} = 3.3\text{ V}$, $T = 25\text{ °C}$, $F = 2450\text{ MHz}$	-	120	-	mA
IDS	Deep sleep current (32.768 kHz oscillator)	$V_{DD} = 3.3\text{ V}$, $T = 25\text{ °C}$	-	1.3	-	mA

6.4 Digital I/O specifications

Table 5. Digital I/O specifications

Symbol	Parameter	Conditions	Min.	Typ.	Max.	Unit
V_{IL}	Low level input voltage	$2.1 < V_{dd} < 3.6 \text{ V}$	0		$0.5 \times V_{dd}$	V
V_{IH}	High level input voltage	$2.1 < V_{dd} < 3.6 \text{ V}$	$0.62 \times V_{dd}$		V_{dd}	V
I_{il}	Input current for logic 0	$2.1 < V_{dd} < 3.6 \text{ V}$			-0.5	mA
I_{ih}	Input current for logic 1	$2.1 < V_{dd} < 3.6 \text{ V}$			0.5	mA
R_{ipu}	Input pull-up resistor			30		$k\Omega$
R_{ipd}	Input pull-down resistor			30		$k\Omega$
V_{OL}	Low level output voltage		0		$0.18 \times V_{dd}$	V
V_{OH}	High level output voltage		$0.82 \times V_{dd}$		V_{dd}	V
I_{OHS}	Output source current (standard)				4	mA
I_{OLS}	Output sink current (standard)				4	mA
I_{OHH}	Output source current (high current)				8	mA
I_{OLH}	Output sink current (high current)				8	mA
I_{OTot}	Total output current for I/O				40	mA

6.5 RF electrical characteristics

Table 6. Electrical characteristics

Symbol	Parameter	Conditions	Min.	Typ.	Max.	Unit
	Frequency range	$V_{dd} = 3.3 \text{ V}$, $T = 25 \text{ }^{\circ}\text{C}$	2405		2480	MHz
TX	Output power	$V_{dd} = 3.3 \text{ V}$, $T = 25 \text{ }^{\circ}\text{C}$			20	dBm
RX	Sensitivity	$V_{dd} = 3.3 \text{ V}$, 1 % PER			-105	dBm
	Adjacent channel rejection	$\pm 5 \text{ MHz}$ $\pm 10 \text{ MHz}$		35 40		dBm

7 Mechanical dimensions

Figure 4. Mechanical dimensions

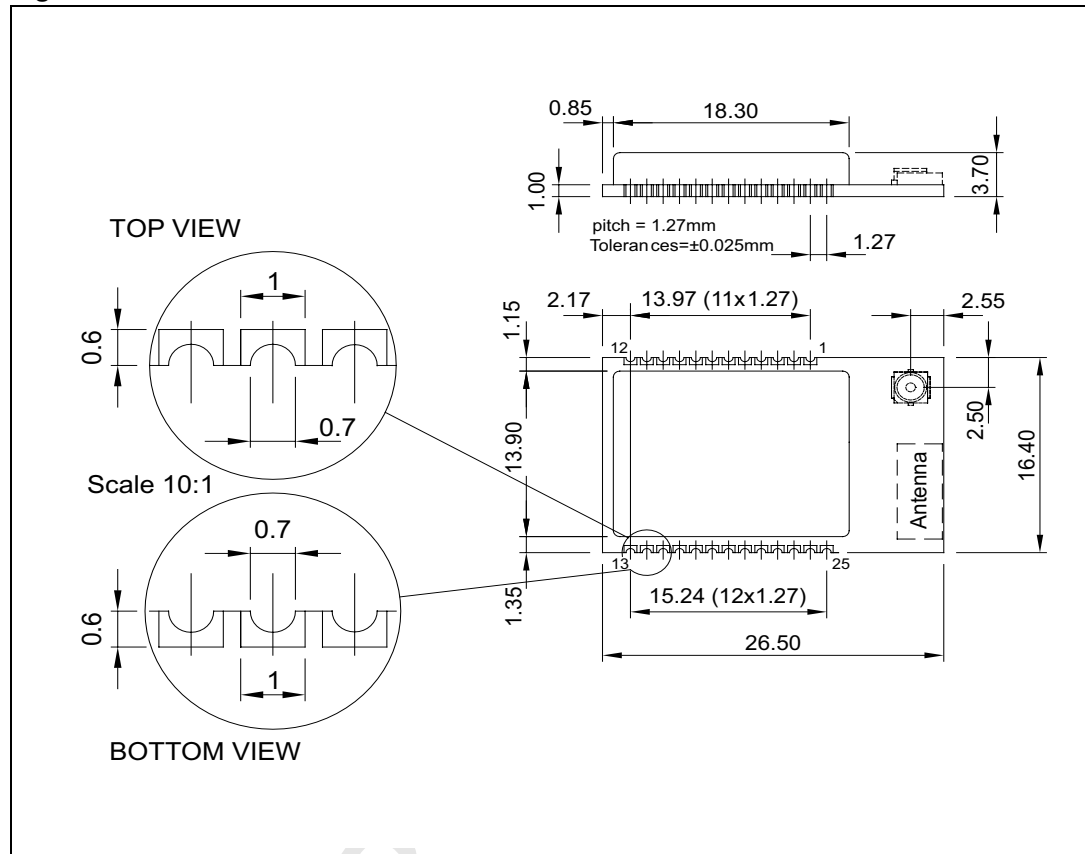
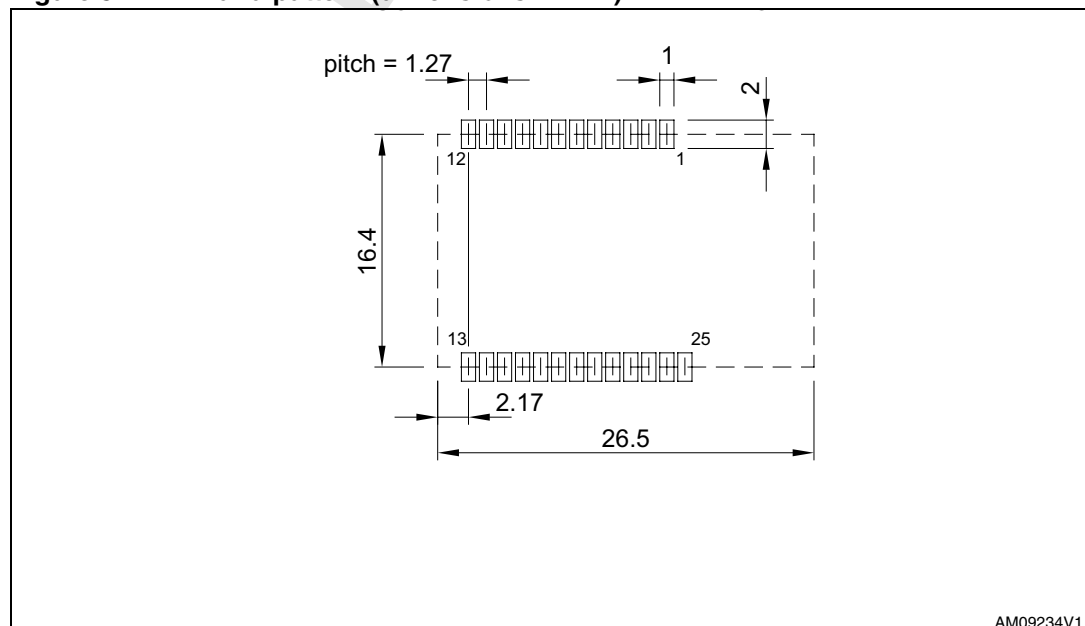


Figure 5. Pin land pattern (dimensions in mm)



8 Soldering

The soldering phase must be carefully executed; in order to avoid undesired melting phenomenon, particular attention must be paid to the set-up of the peak temperature.

Below are some suggestions for the temperature profile based on IPC/JEDEC J-STD-020C, July 2004 recommendations

Table 7. Soldering

Profile feature	PB free assembly
Average ramp up rate ($T_{S\text{MAX}}$ to T_P)	3 °C / sec max.
Preheat	
Temperature min. ($T_{S\text{MIN}}$)	150 °C
Temperature max. ($T_{S\text{MAX}}$)	200 °C
Time ($T_{S\text{MIN}}$ to $T_{S\text{MAX}}$) (t_s)	60 – 100 sec
Time maintained above:	
Temperature T_L	217 °C
Time t_L	40 – 70 sec
Peak temperature (T_P)	240 + 0 °C
Time within 5 °C of actual peak temperature (t_p)	10 – 20 sec
Ramp down rate	6 °C / sec
Time from 25 °C to peak temperature	8 minutes max.

9 Product approvals

This series of modules has been designed to meet national regulations for world wide use. Different versions of modules belonging to the same series are orderable as it is specified in the [Section 10](#). They differ in terms of integrated memory size and protocol stack enabled to run while sharing the same manufacturing , design and radios capabilities. As representative of the series from the RF design and radios capabilities, the versions using 128 kB Flash/8kB RAM and Zigbee PRO Protocol stack (i.e. SPZB32W1A1.1 and SPZB32W1C1.1) have been used during the certification tests. The following certifications have been obtained.

9.1 FCC approvals

The SPZB32W1A1.1 device, with integrated antenna, as well as the SPZB32W1C1.1, with the antenna specified in [Table 8](#), have been tested and found to comply with the limits for a Class B digital device , pursuant to part 15 of the FCC rules. These limits are designed to provide reasonable protection against harmful interference in a residential installation.

This equipment generates, uses and can radiate radio frequency energy and, if not installed and used in accordance with the instructions, may cause harmful interference to radio communications.

However, there is no guarantee that interference will not occur in a particular installation. If this equipment does cause harmful interference to radio or television reception, which can be determined by turning the equipment off and on, the user is encouraged to try to correct the interference by one or more of the following measures:

- Reorient or relocate the receiving antenna
- Increase the separation between the equipment and receiver
- Connect the equipment into an outlet on a circuit different from that to which the receiver is connected

Consult the dealer or an experienced radio/TV technician for help

Module type: ZigBee® module *SPZB32W1A1.1 / SPZB32W1C1.1*

FCC-ID: S9NZB32C1

Modular type: single modular

Table 8. Antenna used for FCC approvals

ITEM	Part N°	Manufacturer
1	2010B4844-01 (Titanis Antenna)	Antenova

Any changes or modifications not expressed approved by the part responsible for compliance could cause the module to cease to comply with FCC rules part 15, and thus void the user's authority to operate the equipment.

While the applicant for a device into which the SPZB32W1A1.1 or the SPZB32W1C2.1 with the antenna specified in [Table 8](#) installed is not required to obtain new authorization for the module, this does not preclude the possibility that some other form of authorization or testing may be required for the end product.

9.1.1 FCC labeling requirements

When integrating the *SPZB32W1A1.1* / *SPZB32W1C1.1* into the final product, it must be ensured that the FCC labelling requirements, as specified below, are satisfied.

Based on the Public Notice from FCC, the product into which our transmitter module is installed must display a label referring to the enclosed module.

The label should use wording such as “Contains Transmitter module FCC ID: S9NZB32C1” or “Contains FCC ID: S9NZB32C1”, any similar wording that expressed the same meaning may be used.

An example is:

Contains FCC ID: S9NZB32C1

9.2 European certification

SPZB32W1A1.1 and SPZB32W1C2.1 devices are CE certified:

CE 0051

Expert opinion N. xxx-xxxxxx released by IMQ refers to the following normative:

Radio: EN300 328: V1.7.1:2006-10

EMC: EN301 489 17 V2.1.1:2009

Safety: EN60950-1:2006 + A11:2009

10 Ordering information scheme

Table 9. Ordering information scheme

	SPZB	32Wx	y	1	.z
802.15.4 / ZigBee modules					
Memory options:					
x --> 1: 128 kB Flash; 8 kB RAM					
x --> 2: 256 kB Flash; 16 kB RAM					
Antenna options:					
y --> A: Integrated ceramic antenna					
y --> C: Integrated UFL connector					
1: Long TX range					
Firmware options:					
z --> 1: ZigBee PRO (EmberZnet)					
z --> 2: STM ZigBee					
z --> 3: RF4CE					
z --> 4: SimpleMAC					
z --> 5: Zigbee IP					

Note: Check availability of the different versions with your ST sales representative.

11 Revision history

Table 10. Document revision history

Date	Revision	Changes
28-Jul-2011	1	Initial release

DRAFT

Please Read Carefully:

Information in this document is provided solely in connection with ST products. STMicroelectronics NV and its subsidiaries ("ST") reserve the right to make changes, corrections, modifications or improvements, to this document, and the products and services described herein at any time, without notice.

All ST products are sold pursuant to ST's terms and conditions of sale.

Purchasers are solely responsible for the choice, selection and use of the ST products and services described herein, and ST assumes no liability whatsoever relating to the choice, selection or use of the ST products and services described herein.

No license, express or implied, by estoppel or otherwise, to any intellectual property rights is granted under this document. If any part of this document refers to any third party products or services it shall not be deemed a license grant by ST for the use of such third party products or services, or any intellectual property contained therein or considered as a warranty covering the use in any manner whatsoever of such third party products or services or any intellectual property contained therein.

UNLESS OTHERWISE SET FORTH IN ST'S TERMS AND CONDITIONS OF SALE ST DISCLAIMS ANY EXPRESS OR IMPLIED WARRANTY WITH RESPECT TO THE USE AND/OR SALE OF ST PRODUCTS INCLUDING WITHOUT LIMITATION IMPLIED WARRANTIES OF MERCHANTABILITY, FITNESS FOR A PARTICULAR PURPOSE (AND THEIR EQUIVALENTS UNDER THE LAWS OF ANY JURISDICTION), OR INFRINGEMENT OF ANY PATENT, COPYRIGHT OR OTHER INTELLECTUAL PROPERTY RIGHT.

UNLESS EXPRESSLY APPROVED IN WRITING BY AN AUTHORIZED ST REPRESENTATIVE, ST PRODUCTS ARE NOT RECOMMENDED, AUTHORIZED OR WARRANTED FOR USE IN MILITARY, AIR CRAFT, SPACE, LIFE SAVING, OR LIFE SUSTAINING APPLICATIONS, NOR IN PRODUCTS OR SYSTEMS WHERE FAILURE OR MALFUNCTION MAY RESULT IN PERSONAL INJURY, DEATH, OR SEVERE PROPERTY OR ENVIRONMENTAL DAMAGE. ST PRODUCTS WHICH ARE NOT SPECIFIED AS "AUTOMOTIVE GRADE" MAY ONLY BE USED IN AUTOMOTIVE APPLICATIONS AT USER'S OWN RISK.

Resale of ST products with provisions different from the statements and/or technical features set forth in this document shall immediately void any warranty granted by ST for the ST product or service described herein and shall not create or extend in any manner whatsoever, any liability of ST.

ST and the ST logo are trademarks or registered trademarks of ST in various countries.

Information in this document supersedes and replaces all information previously supplied.

The ST logo is a registered trademark of STMicroelectronics. All other names are the property of their respective owners.

© 2011 STMicroelectronics - All rights reserved

STMicroelectronics group of companies

Australia - Belgium - Brazil - Canada - China - Czech Republic - Finland - France - Germany - Hong Kong - India - Israel - Italy - Japan - Malaysia - Malta - Morocco - Philippines - Singapore - Spain - Sweden - Switzerland - United Kingdom - United States of America

www.st.com