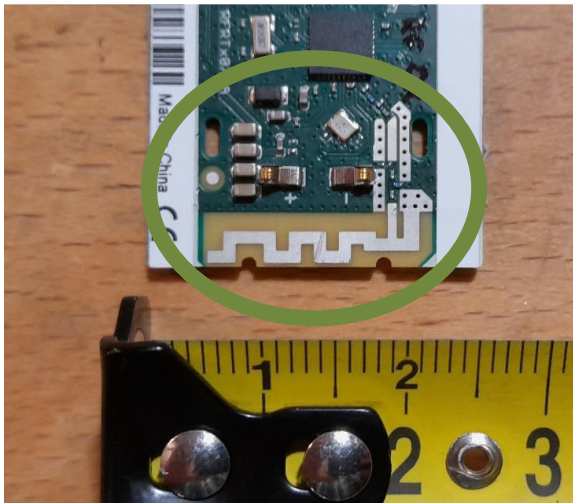


## Part 15 Antenna Information

### Description:

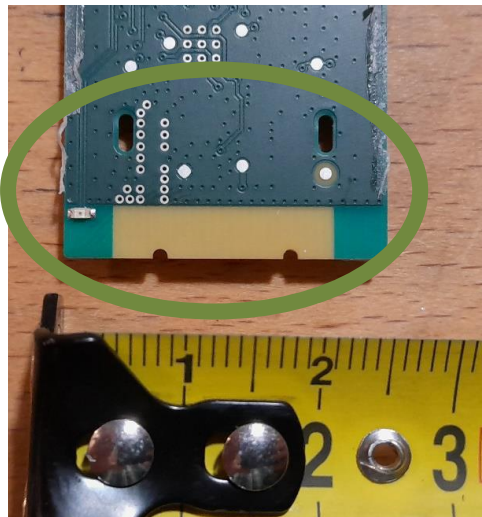
The device uses a meandered inverted-F antenna (IFA) in printed circuit board technology which is fed by a coplanar waveguide.

Photograph of the assembled antenna and coplanar waveguide feed line:



Ruler dimensions are in centimeter.

Bottom view of the PCB:



Measured gain:

Maximum Gain  derived from EIRP and conducted measurement:		Maximum Gain (dBi)		
Test condition		CH 0 (2404,053MHz)	CH 4 (2441,844MHz)	CH 10 (2479,285MHz)
T <sub>nom</sub> 23 °C	V <sub>nom</sub> (3)V	-0,79	-1,28	-1,37

Details are given in the test report exhibit.