

HITVIS

www.hitvis.com

Indoor HD P2P WIFI Camera User Manual



Model: HT811WP

V1.0

1 Read Before Use

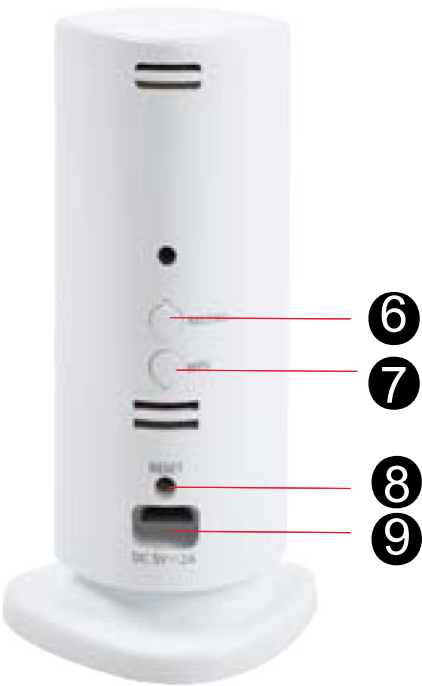
Please read and understand the following safety sheet before you use the monitor.

- This camera is designed for indoor usage only,between -10 °~55° C.
- Keep this camera out of direct sunlight.
- Only use the provided power adapter with this camera.
- Keep the camera,power adapter,and accessories out of the reach of children and pets.

2 Packing Contents

WIFI CAMX1	Power Adapter x 1
User Manual x1	Mounting Bracket x1
Warranty Card x1	

3 Device Overviews



1---Flash lamp	2---Monitor Lens	3---LED light
4---Microphone	5---Magnetic base	6---Record
7--- WPS	8---Reset	9--- DC power

The status of LED light

No light: No power supplied to the monitor.

Keep green light: Camera is starting up.

Blinking red light about once every second: Camera is under AP mode.

Blinking green light about once every second: Camera has connected to a wifi network and under STA mode.

Blinking green light about two times every second: Camera is recording after you press the record button on the back of the camera.

Alternately flashes green and red light: Camera is connecting to a wifi network after you pressed the WPS button.

Blinking red light quickly about two times every second: The network has some problem and the camera cannot connect to the network.

Keep red light on: The camera has some problem and can't start well.

Record

Press and hold this button for one second, the led light will turn to green and blink quickly, the camera starts recording and stores the record file to micro SD card. Press and hold this button for one second again, it stops recording. Make sure the camera has inserted micro SD card.

WPS

Step1:

Press and hold the WPS button for one second , and you will see the led light flashes green and red light alternately.

Step2:

Press the WPS button on your router within 60 seconds. The WPS button is usually on the front side of your router. If you are not sure where the WPS button is on your router, please refer to your router's User Manual. The HT811WP will automatically create a secure wireless connection to your router. After connected successfully, the led in your camera will blink green.

Reset

Press and hold the Reset button for 3 seconds to reset the camera to factory default settings.

Micro SD card slot



Support up to 32G. You'd better insert or takeout micro SD card when the camera without the power. But if you inset the micro SD card while the camera is running ,please reboot the camera (unplug the power, then plug it again), or else the micro sd card may be cannot work well.

The new file will recover the oldest file when there is no space in the micro SD card.

4 Mounting the camera

Mount the camera on the wall or fix it at the ceiling.



5 Software Installation

Search for HITVIS app to download and install the app on your phone when connected to the Internet.

You can also download the Android app from our website .



6 AP and STA mode

The wifi camera supports AP and STA mode, what's the difference?

AP mode: This is the default mode, your camera acts as an central connection point, which wireless devices can connect to.

Under this mode, you can connect directly to your camera, which means there is no need for an Internet connection or a router. You can view the camera in LAN.

STA mode: Connect HT811WP to your home wifi network.

You can go to page 17 to read how to view the camera under AP or STA mode.

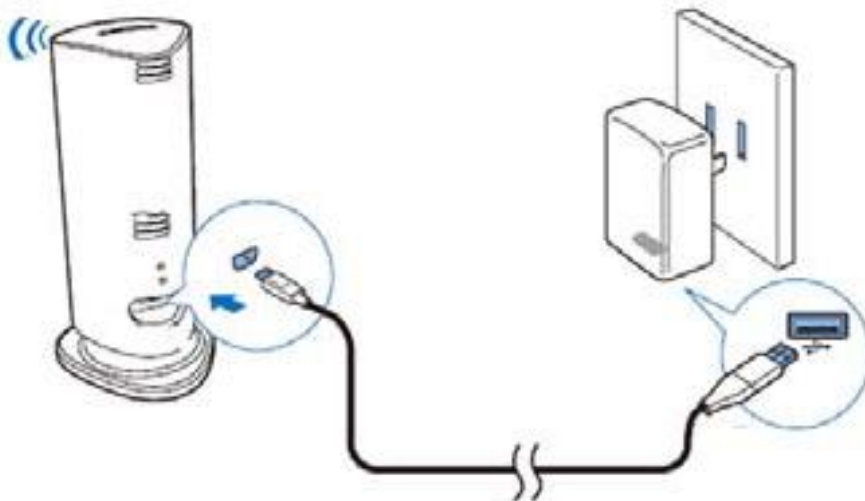
Note

AP and STA modes cannot exist at the same time. One time only one mode takes effect.

7 Live view

Step 1

Power the camera, the LED light will turn to green . Wait for 5 seconds, the light will turn to red and flash about once every second.



Step 2 Start the App.

Tap our phone app icon and start the program. First time using the app, you will go to our guide interface as figure 1.

Click Next--Next , you can go to the following screen as figure 2 .

As a new user, please tap “New user” and do as our guide information.



Figure 1

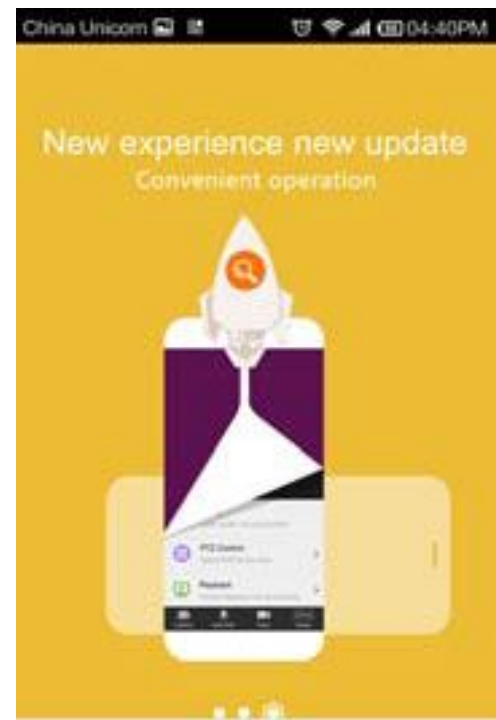


Figure 2

Step 3 Connect monitor to a wi-fi network

Tap “Enjoy now”(Figure 3) , App will search the device in LAN automatically(Figure 4). Tap “Sure”, then select “Start” .(Figure 5)



Figure 3



Figure 4



Figure 5



Figure 6

Tap the device ID you want to configure as figure 6, you can also see the ID No. (for example: S98214258) in your color box. Next you can connect your camera to a wifi network.

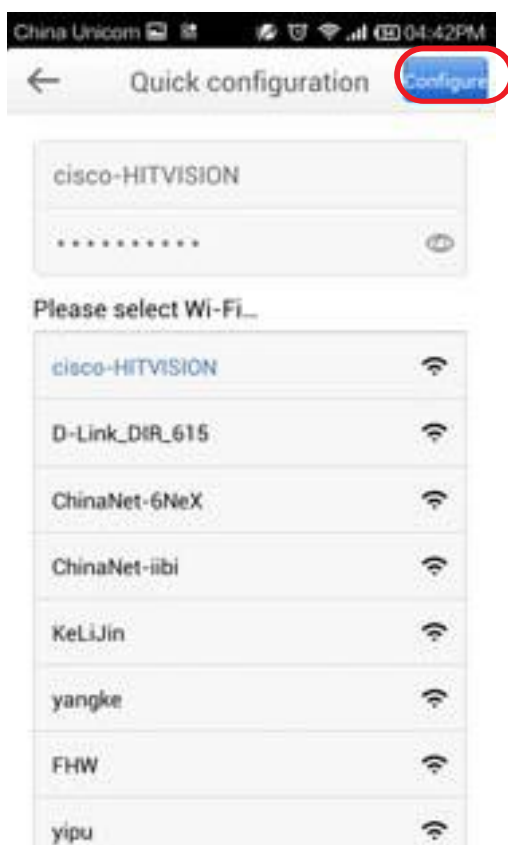


Figure 7



Figure 8

Click the SSID of your router in the list, the router SSID will be filled in the top box automatically, you only need to fill in the sharekey. Make sure that SSID and share key you filled in the camera exactly the same for your router. Then tap “Configure” to finish configuration(Figure 7,8) . Wait for 30 seconds, you can see the LED light of the camera turns to green and flashes once every second which means the camera configured successfully.

Step 4 Live view

Register an App account to manage your devices.(Figure 9)

Click “Confirm” and add you device to the app(Figure 10).

The device ID will filled automatically, you don’t need to change it, or else you can not connect the device successfully. If you tap “Setting”, you can see you need to fill the username and password. The default device username is admin with no password. But for the first time using, you can tap “Save” icon to add device without filling it. (Figure 11)

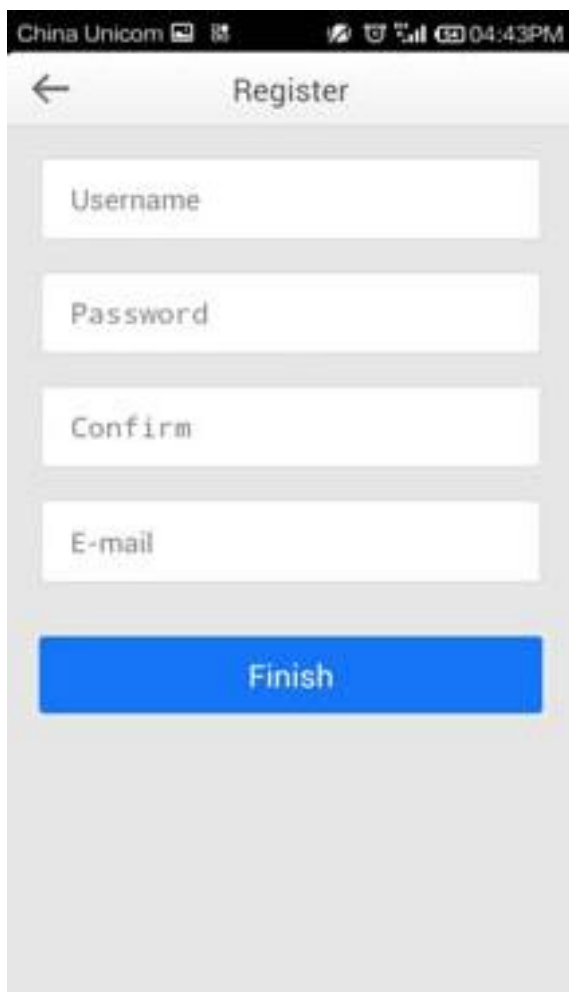


Figure 9



Figure 10

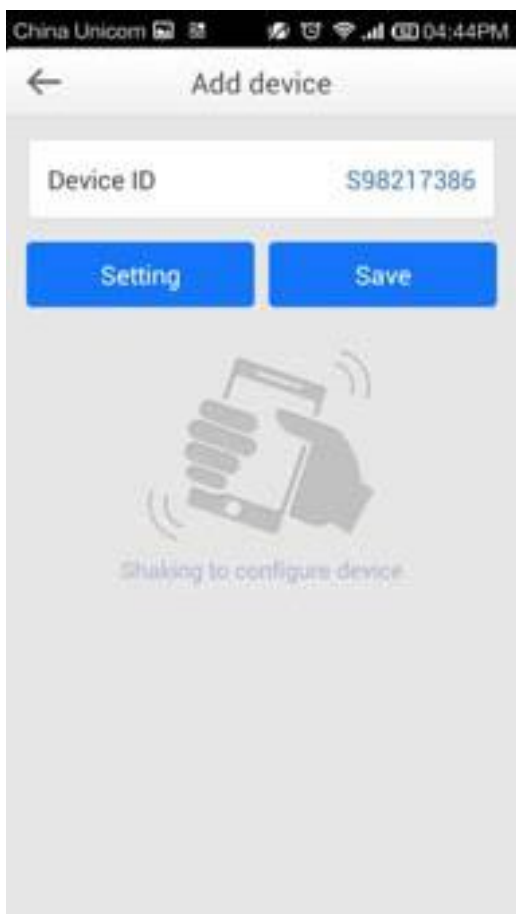


Figure 11

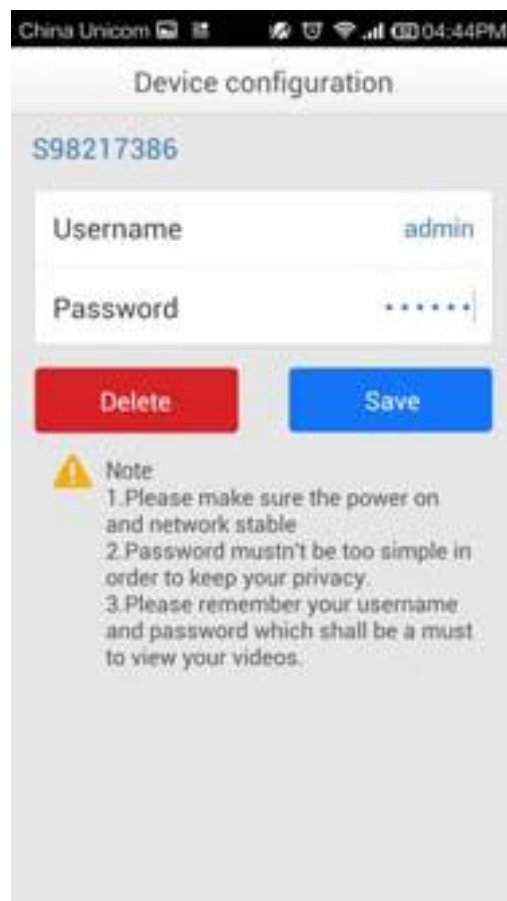


Figure 12

For the first time using, you must reset the username and password to avoid unauthorized users. (Figure 12) Tap “Save” to save settings.

Note

Please remember the device username and password , you only have this chance to change it. Next time you want to reset the username or password, you must reset the camera.

After changing the device username and password, you will go to “ My video ” page automatically, tap the device , and you can enjoy live video.

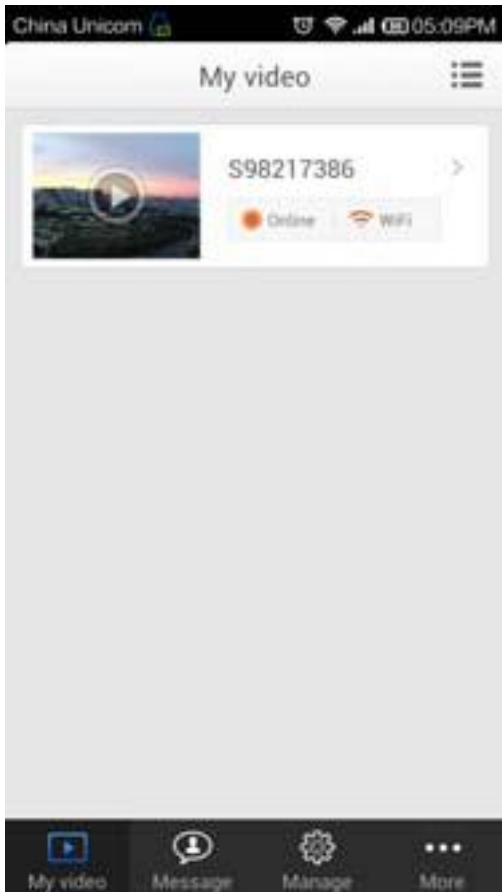


Figure 13

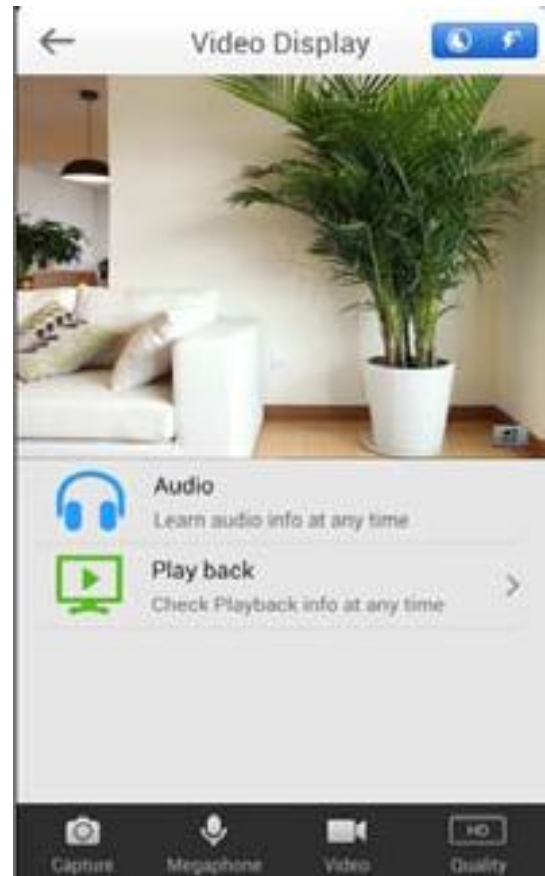


Figure 14

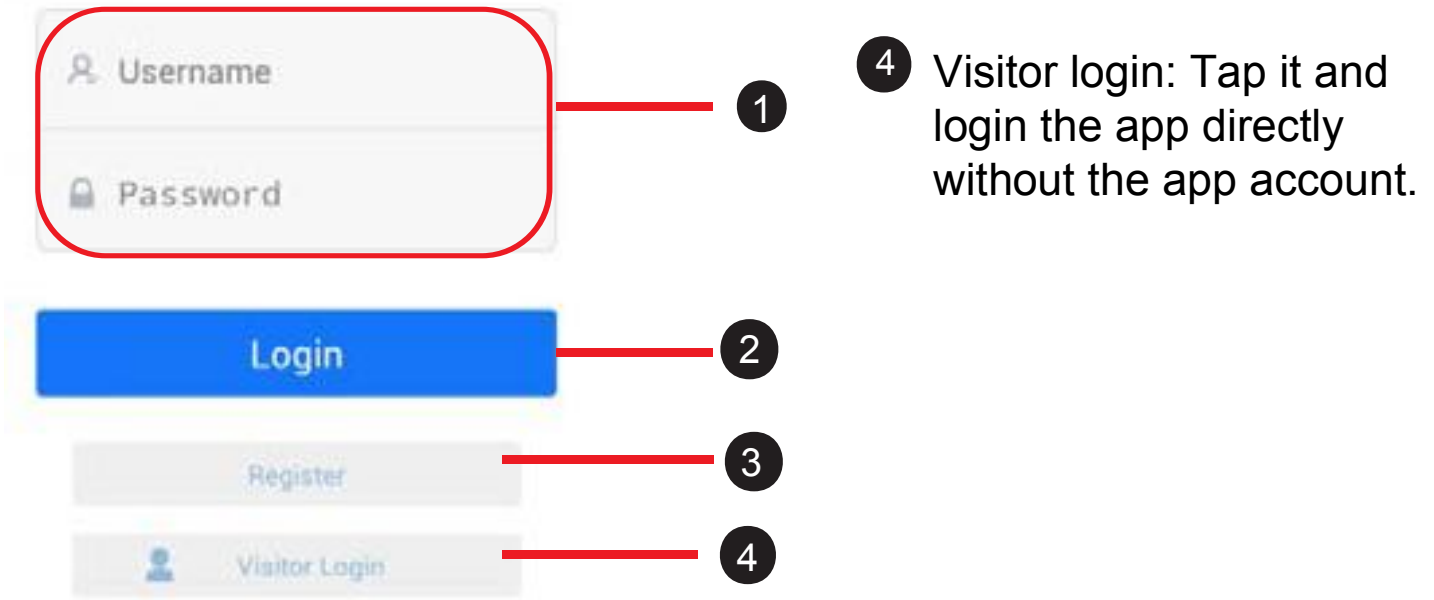
8 Advanced App Setting

Login page

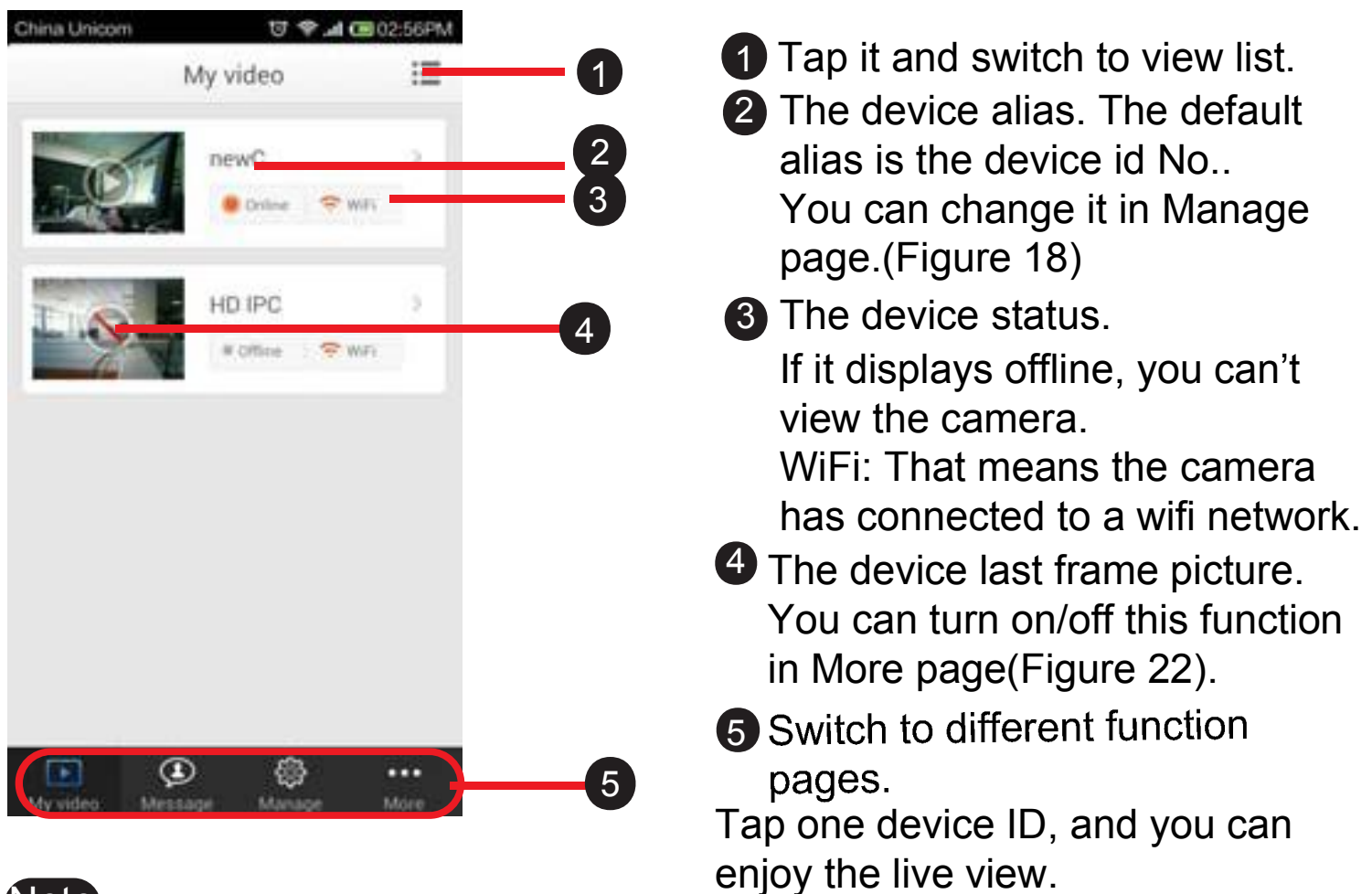
Phone app support two login modes: Visitor login and Account login. For Visitor, you don't need to register an app account, you can tap Visitor login to login the app directly. For Account login mode, you must register an app account, fill in the username and password before login, and your phone must connect internet.

Some functions you can't use under Visitor login mode, such as alarm message receiver, advanced settings about the camera you added, scene picture and so go. So here we suggest you using Account login mode.

- ① Username / Password: The username and password you registered in app.
- ② Login: Fill in the app username and password, then tap login.
- ③ Register: Tap it and go to Register page, then you can register an app account.



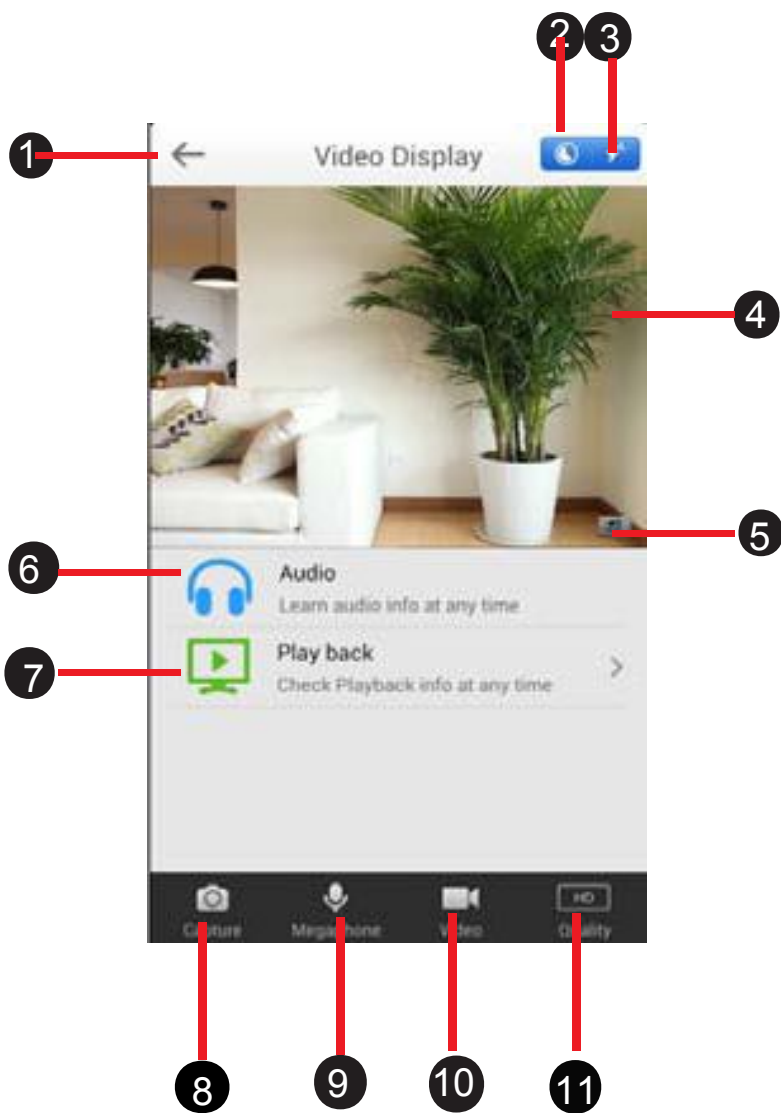
My video page



Note

For visitors, My video screen has some difference with the up left one.

Live view page



- ① Back
Back to the My video page.
- ② Alarm icon
Enabled the alarm,when the motion has been detected, the app will recording and send alarm message to you.



Disabled the alarm.



Enabled the alarm.

You can set the alarm time in Manage-->Advanced panel (Figure 21).


If you open the alarm info in More-->Setting panel, you can receive the alarm info when motion is detected (Figure22).


- ③ Flash lamp status



The flash is on.

When you tap the Capture icon, the camera will take a snapshot and the flash lamp will open to increase the brightness at the same time.

 The flash lamp will always keep closing when you take the snapshot.

 When you tap the Capture icon to take the snapshot picture, whether the flash lamp open depends on the surrounding light conditions.

Don't shoot the flash lamp at your eyes or children's.

- ④ Live view window

If the camera has connected to a wifi network, you can see the timestamp in the left corner.If you have set the alias for the camera, you can see the alias on the up left corner.

- ⑤ Flip

You can flip the image by tapping this icon.

- ⑥ Audio

Tap it and enable the audio.

- ⑦ Playback

Tap it and play back the recording files that stored to micro sd card, including alarm recording files and manually recording files that gettings from the record button on the back of the camera.

The name of the alarm recording files contain character 'A'.

The name of the manually recording files contain character 'N'.

8 Capture

Tap it and take a snapshot and stores it to your phone: Explorer---Hitvis Capture Img.. You can review the pictures in More---Media page.

9 Megaphone

The type camera can not support this function.

10 Video

Tap it to record a video and store it to your phone: Explorer---HITVISVideo. You can review it in More---Media page.

11 Video resolution

Here supports three resolutions: HD,SD, Fluency.

Message Page



For account login mode, this page you can see the alarm information and system information.

For alarm information, tap picture, you can view the alarm picture, if you want to view the alarm video, please tap "Check alarm video". The alarm videos have a copy in the micro SD card. You can playback it from live view window.

You can view the app information in the System info page.

Slide your finger down the screen, the information will update automatically.

Note

1 For the alarm information, make sure you have open the alarm status firstly, then check whether you open the alarm message switch in the More -Setting page.

2 Make sure you have plugged the micro SD card to you camera, or else you can not get the alarm video.

3 For android users, you can't get the alarm information anytime if you exit app.

Manage Page

If you have not added cameras to the app, you will see figure 15.

- 1 Tap the plus sign in the up right corner, you will go to Add device page .(Figure16)
- 2 Tap “Quick Install” and connect the camera to a wifi network. Make sure the camera is under AP mode, or else you cannot search it.
- 3 If the camera has connected to internet, here you only need to fill in the device ID, username and password. Then tap “Save” (Figure 16).
- 4 Shake your phone, you can also search the camera that under AP mode, then you can connect the camera to your home router.

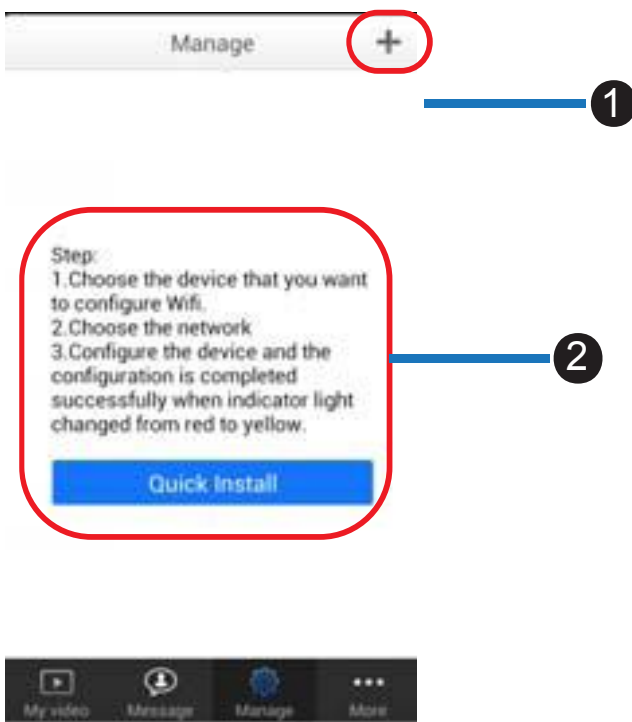


Figure 15



Figure 16

If you have added cameras,you will see the following screen.(Figure 17)

- 1 Tap the plus signal, you will go to Add device page(Figure16),this page you can add cameras that under STA mode,or configure the device to a wifi network.
- 2 The alias of the camera. Tap it and go to Device setting page ,you can change the alias of the added camera.
If you have put the wrong username or password before, here you can re-enter it (Figure 18).
- 3 Tap the switch, you can change the alter status. If here displays on, you can go to Advanced to do the alarm time.
- 4 Net setting: Tap it and you can see the wifi network that device connected(Figure19).

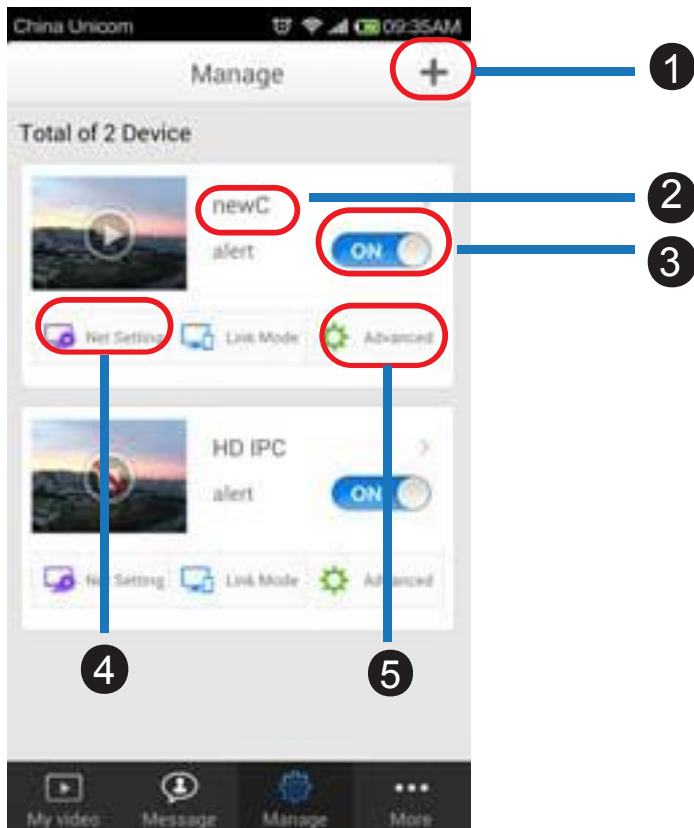


Figure 17

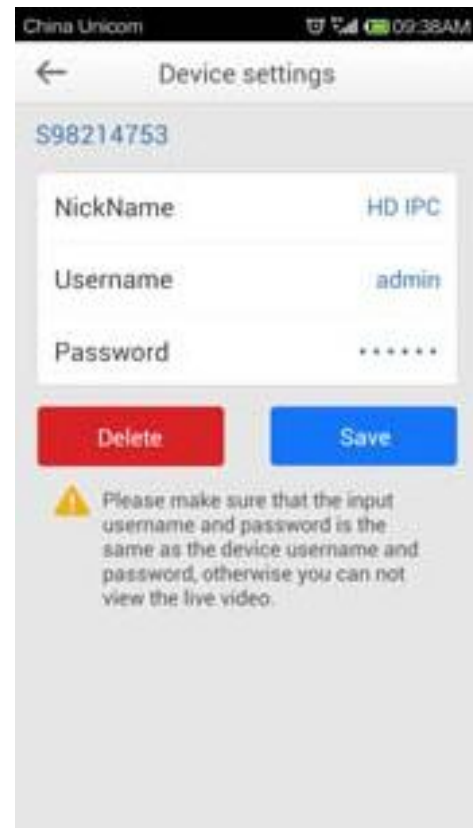


Figure 18



Figure 19

- 5 Tap it and go to alarm time setting page(Figure 21).
- 6 The wifi network that camera conected, you need not to change it.

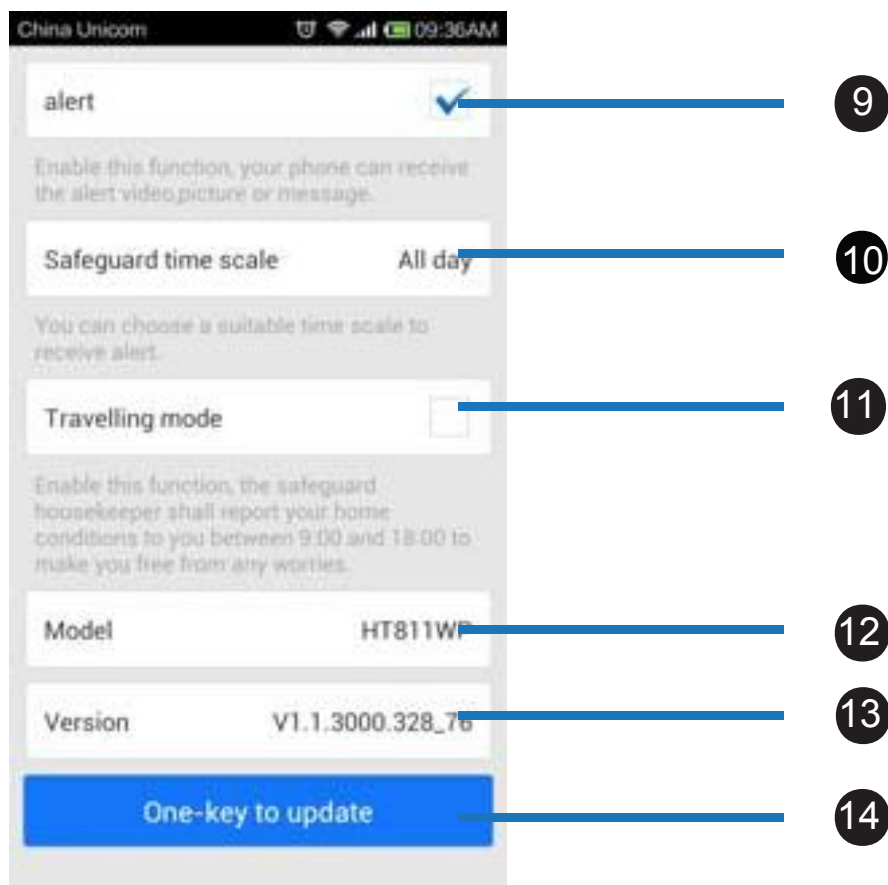
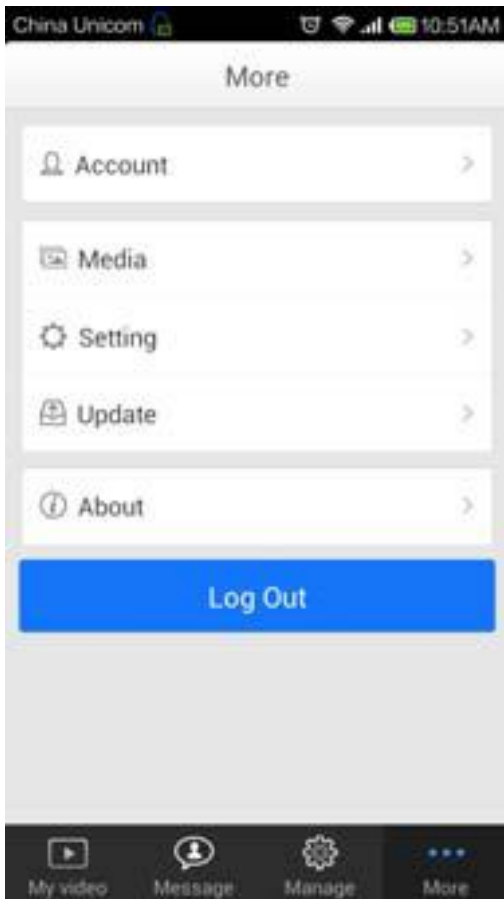


Figure 21

- 7 Tap it and the device will switch to AP mode.
- 8 Video format. If your country uses PAL, here you tap it and switch your camera to PAL.
PAL (Region: China, Eurpoe) , NTSC: (Region: USA , Canada)
- 9 Enabled or disabled the alarm time settings.
- 10 Tap it and you can set the alarm time. During the alarm time , if you haveopen the motion detection, and t!he motion is detected, the camera will alarm.
- 11 Select the Travelling mode, the camera will alarm between 9 o'clock and 18 o'clock when the motion is detected.
- 12 The camera model.
- 13 The software version of the camera.
- 14 Tap it and upgrade the camera's software.

More Page



Account: Tap it and do more settings about the login account.

Media: Tap it and review the captured images and videos that stored in your phone.

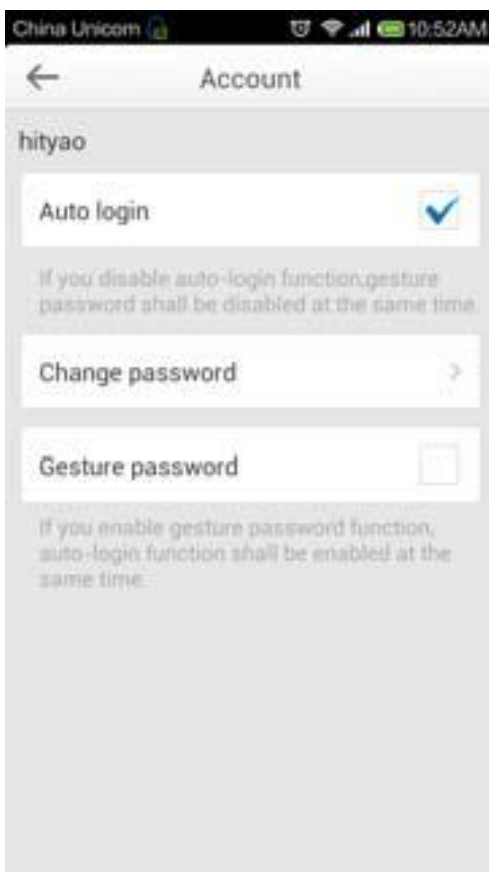
Settings: Tap it and do more settings about the app.

Update: Tap it and check whether there is new phone app to update.

About: The app version.

Log Out: Log out the current login account.

For Visitor login, some function can't be used.



Auto login: If you don't logout the account when you exit the app, next time you login, you need not re-enter the username and password.

Change password: Change the account pwd.

Gesture password: Tap it and enter the pwd to confirm, then you can set a gesture. Don't logout the account when exit the app, next time you can enter the gesture to login.



9 How to view the camera under AP or STA mode

View the camera under AP Mode

When the camera is under AP mode, you can see the led is blinking red about once every second.

(1) Connect your mobile device to the HT811WP network. The default password is 12345678.

The SSID format of HT811WP is “IPC-H-S...”, the default AP password is “12345678”.

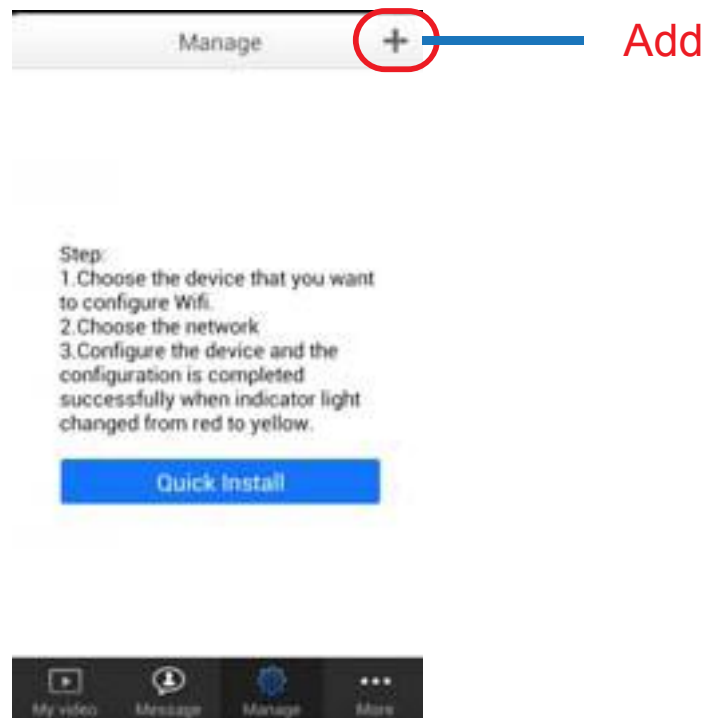


Figure 23

(2) Open the HITVIS app. Under AP mode , you can only login the app as a visitor. Go to Manage page to add camera to app manually. The device ID you can see in the color box. The default username is admin with no password.(Figure 23)

(3) Go to My video page, tap the device you added, you can view the live view.

View the camera under STA Mode

Firstly ,verify the status of the camera.

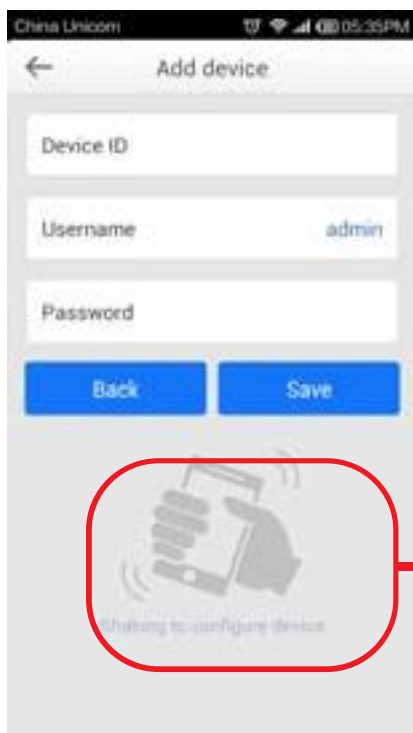
View the led status of the camera, if it displays green and blinking once every second, that means the camera is under STA mode, you only need to add the camera to app as figure 22, then you can view it directly.

If it displays red and blinking once every second,that means the camera is under AP mode. You need to connect the camera to a wifi network.

How to connect the camera to a wifi network?

Open the app, and go to Manage page, tap the plus sign (Figure 23) , then shaking your phone, app will search the device automaticall. Then fill in the SSID and share key of your router. Wait for 30 seconds, you can see the led turns to green and blinking once every second.

Add the camera to your phone, you can view the live view.



Shaking your phone or tap it

10 Specification

Output resolution	HD,D1,CIF
Image Sensor	1/3 Color CMOS sensor
Lens	F: 2.4
Mini. illumination	3 Lux
Viewing Angle	68 degree
Frame rate	25fps(HD),30fps(D1),30fps(CIF)
Video Compression	H.264
Connectivity	Wi-Fi
Wireless Standard	IEEE 802.11b/g/n
ONVIF Protocol	Supports ONVIF
TF Card	Up to 32G
Power supply	5V/2A
Dimension	36(L)X37(W)X97(H)mm
Net weight	70g
Gross Weight	285g
Operating Temperature	-10°~55°C
Software supported	Android, iOS
Certification	CE,FCC, ROHS

11 FCC Statement

This device complies with part 15 of the FCC Rules. Operation is subject to the following two conditions: (1) This device may not cause harmful interference, and (2) this device must accept any interference received, including interference that may cause undesired operation.

Any Changes or modifications not expressly approved by the party responsible for Compliance could void the user's authority to operate the equipment.

Note: The manufacturer is not responsible for any radio or TV interference caused by unauthorized modifications to this equipment. Such modifications could void the user's authority to operate the equipment.

Note: This equipment has been tested and found to comply with the limits for a Class B digital device, pursuant to part 15 of the FCC Rules. These limits are designed to provide reasonable protection against harmful interference in a residential installation. This equipment generates uses and can radiate radio frequency energy and, if not installed and used in accordance with the instructions, may cause harmful interference to radio communications. However, there is no guarantee that interference will not occur in a particular installation. If this equipment does cause harmful interference to radio or television reception, equipment generates, uses and can radiate radio frequency energy and, if not installed and used in accordance with the instructions, may cause harmful interference to radio communications. However, there is no guarantee that interference will not occur in a particular installation. If this equipment does cause harmful interference to radio or television reception.

- Reorient or relocate the receiving antenna.
- Increase the separation between the equipment and receiver.
- Connect the equipment into an outlet on a circuit different from that to which the receiver is connected.
- Consult the dealer or an experienced radio/TV technician for help.

Note: The product installation must comply with the requirements of manufacturer or supplier, and it must be 20cm away from human body

12 Others

While we hope your experience with this camera is enjoyable and easy to use, you may experience some issues or have questions that this User's Guide has not answered.

If you have problem with this camera, please first contact HITVIS reseller for solving the problems. If our reseller cannot provide service, pls contact our service department: tech@hitvis.com .

FCC ID:2ACQIHT811WP

