



IVOD User Manual

Shenzhen Iecig technology Co., Ltd

Content

1.Preface and Product configuration...	1
2.Battery Body Use.....	2-3
3.Atomizer Use.....	4-5
4.Smoking Light Show.....	6
5.Charging Process.....	7
6.Precautions and Warranty.....	8
7.IVAP Software Use.....	9-19

FCC Statment This device complies with part 15 of the FCC Rules. Operation is subject to the following two conditions:

- (1) This device may not cause harmful interference, and
- (2) this device must accept any interference received, including interference that may cause undesired operation.

Any Changes or modifications not expressly approved by the party responsible for compliance could void the user's authority to operate the equipment.

Note: This equipment has been tested and found to comply with the limits for a Class B digital device, pursuant to part 15 of the FCC Rules. These limits are designed to provide reasonable protection against harmful interference in a residential installation. This equipment generates, uses and can radiate radio frequency energy and, if not installed and used in accordance with the instructions, may cause harmful interference to radio communications. However, there is no guarantee that interference will not occur in a particular installation. If this equipment does cause harmful interference to radio or television reception, equipment generates, uses and can radiate radio frequency energy and, if not installed and used in accordance with the instructions, may cause harmful interference to radio

communications. However, there is no guarantee that interference will not occur in a particular installation.

If this equipment does cause harmful interference to radio or television reception, —Reorient or relocate the receiving antenna.

—Increase the separation between the equipment and receiver.

—Connect the equipment into an outlet on a circuit different from that to which the receiver is connected.

—Consult the dealer or an experienced radio/TV technician for help.

RF warning statement

The device has been evaluated to meet general RF exposure requirement. The device can be used in portable exposure condition without restriction.

The IVOD revolutionarily adopt memorizer system which is able to record and manage your vapor history. Meanwhile, it can realize human-machine interaction through connecting with mobile phone, and show your smoking data clearly. In addition, extra larger Hangge battery give you the perfect vapor all day long.

The IVOD is the first e cigarette used bluetooth technology, realize remote control by the APP which install in mobile phone through bluetooth link.

The IVOD is the milestone, the turning point and the new breakthrough of vapor intelligent e cigarette.

Standard Configuration:

- 1 x IVOD Battery Body
- 2 x IVOD Atomizer
- 1 x USB Charger
- 1 x American Standard Adapter
- 1 x 10ml Bottle Needle
- 1 x IVOD Manual
- 1 x Guarantee Card

Compatible with
all 510 type
clearomizers

Atomizer

Screw the Atomizer
body in the battery

Switch Button

Battery Tube



Shutdown Mod

press on about 10s



switch the bluetooth on
blue light blink one time
per three seconds

click the switch
button 5 times



Switch the smoking on
when red light
blink three times



click the switch button
5 time just only smoking,
but it can memorize your
smoking data,even
through the bluetooth off.

Click the switch button 5 times:
put the smoking on/off
Press on the switch button 10s:
put the bluetooth on/off
Kindly Reminder:

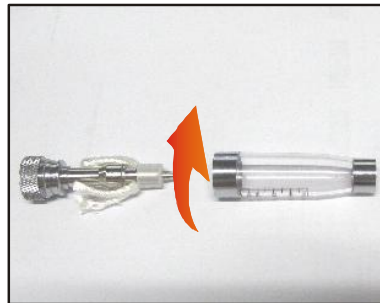
Please put on/off bluetooth function
when the smoking function off.
Introduction of button function:

1. Pull out the drip tip from the atomizer.
2. Screw the bottom to the left.
3. Screw the atomizer coil out.

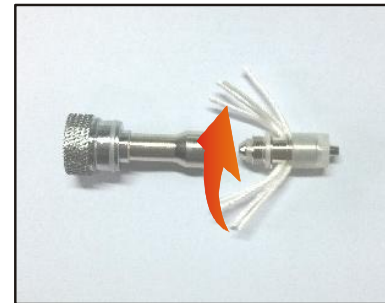
Ensure you can use the IVOD atomizer normally,
(pls refer to the pic):



(1)



(2)



(3)

Make the bottom screw out from the body,inject the e-liquid in from the bottom,keep the e-liquid slowly melting down along the edge of the atomizer .

Kindly Reminder:

- 1.Don' t make e-liquid full of the atomizer.
- 2.Don' t make e-liquid inject in the exit of the gas at the middle,and it is better to leave 1-2mm space.



Different battery capacity different color.

Battery Voltage:

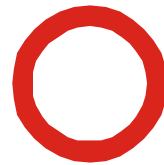
Smoking Light Show:



4.2-3.9V Cyan



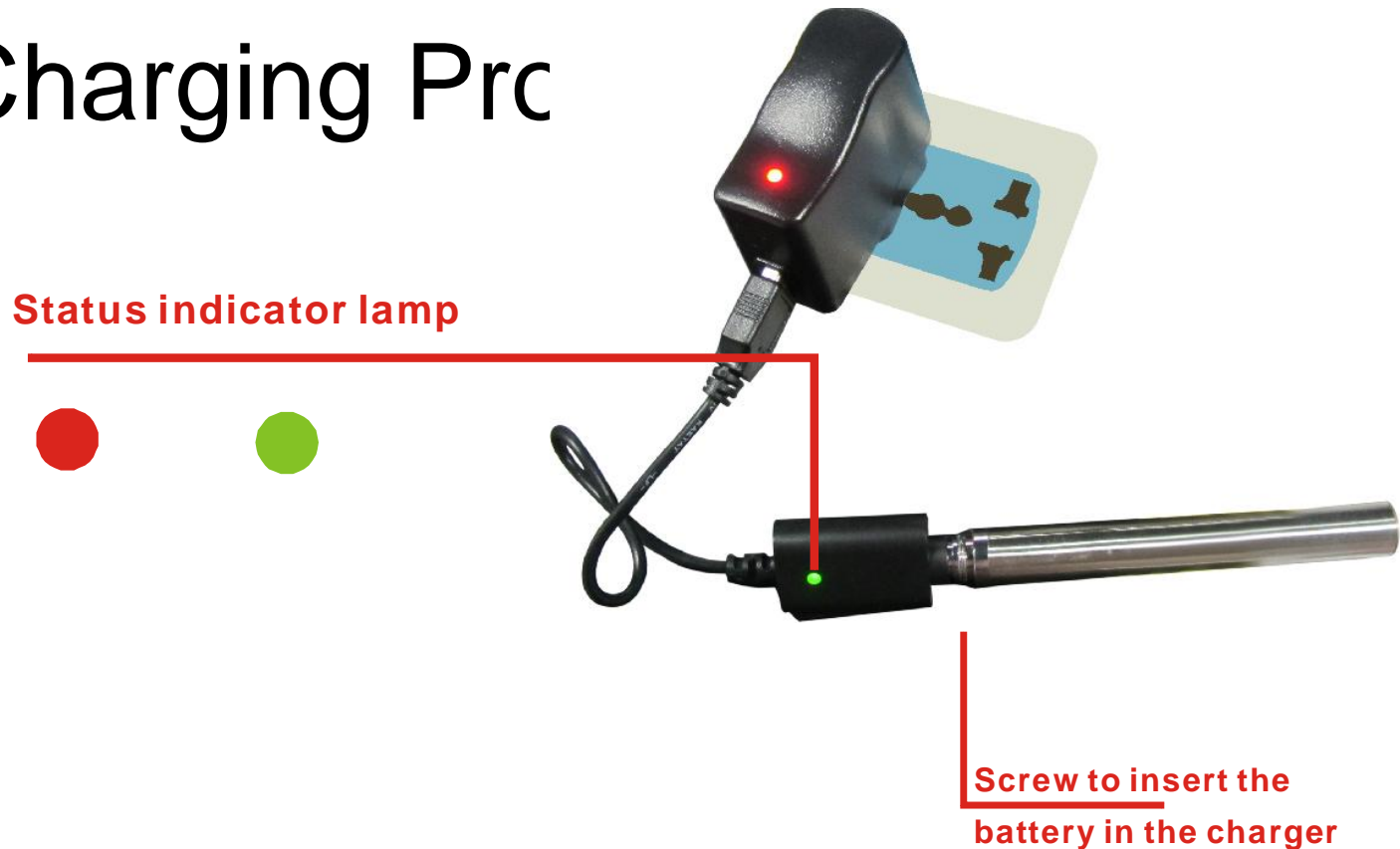
3.6-3.9V Green



3.2-3.6V Red

Press to smoke
when smoking and
bluetooth working

Charging Prc



To charging IVOD, plug the dedicated cable into the charging port of the IVOD.

It takes approximately 3 hours to charge via a charger, the charger will not be sold together with the product, please choose qualified ac/dc charger.

Please allow the battery enough time to be fully charged.

Precautions:

Be sure to read the instructions and precautions before using the product. This will help ensure easier and safer use.

1. Don't abuse your IVOD even though it's made of metal you can damage it by dropping it.
2. Only have your IVOD repaired by IECIG. Don't attempt to repair the unit yourself as damage of personal injury can occur.
3. Don't remove the circuit board housing from behind the front cap. Doing so will void your warranty.
4. The IVOD operates on a single lithium-ion battery. Never stack two batteries or use batteries that are not recommended for use in the IVOD. This is very dangerous to use magnets on your batteries.
5. In order to guarantee the normal work of IVOD and the effect of smoking, we suggest that you should charge in time when the battery power is below 10%.
6. In order to prolong the validity of IVOD, please don't place it in too hot or too cold an environment.
7. Please obey local laws or regulations while vaping with electronic cigarettes. If there are any bans or potential dangers, please keep the battery locked.
8. IVOD is not waterproof, so please keep it dry. It may cause its components damaged or electronic shocks if you touch it with wet hands.
9. Keep your IVOD away from sources of excessive heat.
10. Please use only IECIG's dedicated accessories and batteries, and keep it away from children.
11. Please use only IECIG's dedicated software to modify programs and parameters of IVOD.
12. Don't drop, hit or beat IVOD, or you may cause damage to outer shell or inner components.

Warranty

Please consult with IECIG distributors for their warranty and return policy; we are not responsible for the defects caused by human error. IECIG's warranty doesn't apply to products purchased through third party vendors.



IVAP Software Performance



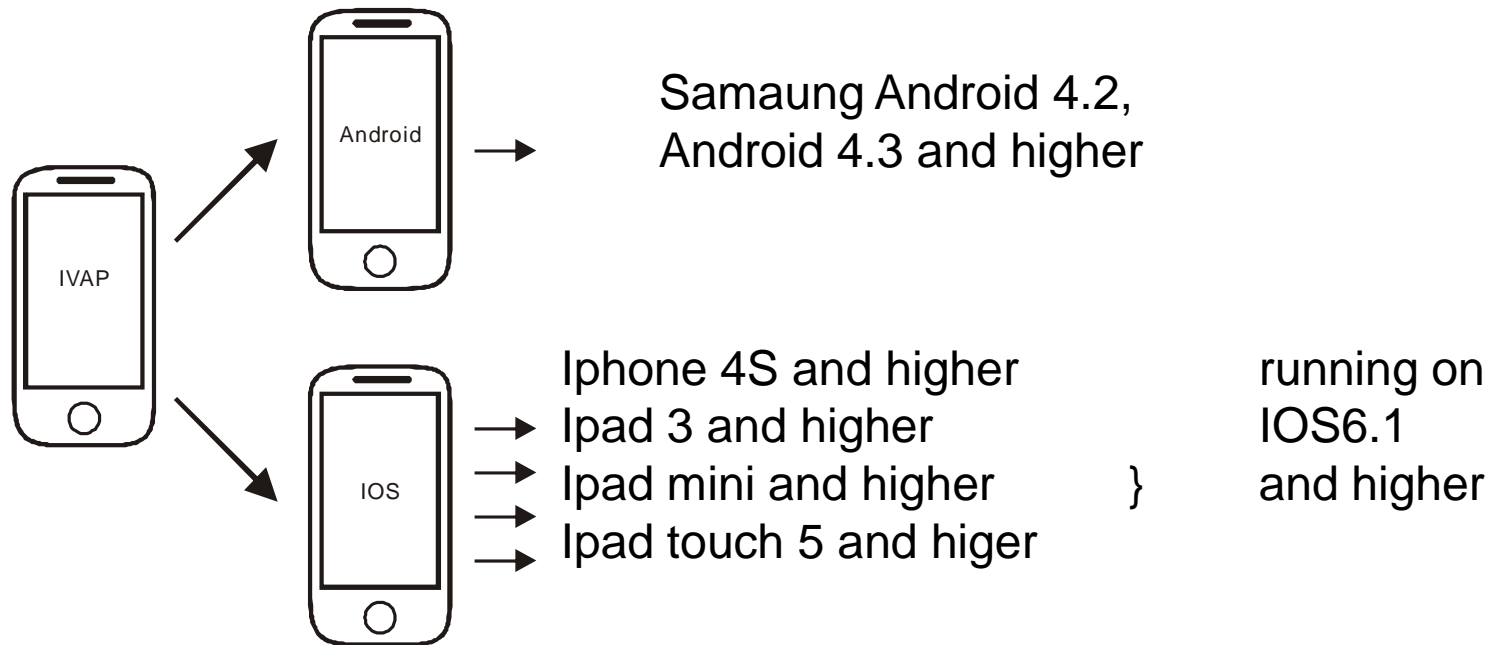
Seek “IVAP-S” , you could find the app run on samsung android 4.2
Seek “IVAP” , you could find the app run on android 4.3 and higher
to download and install



Seek “IVAP” , you could find the app run on IOS 6.1 and higher

Step of Run IVAP:

- 1、Download and Install IVAP
- 2、Run IVAP



Kindly Reminder:

Please keep the bluetooth function of smart phone on all the time.
The smoking and bluetooth function switch on as default
when the atomizer screw in the battery

IVAP Running

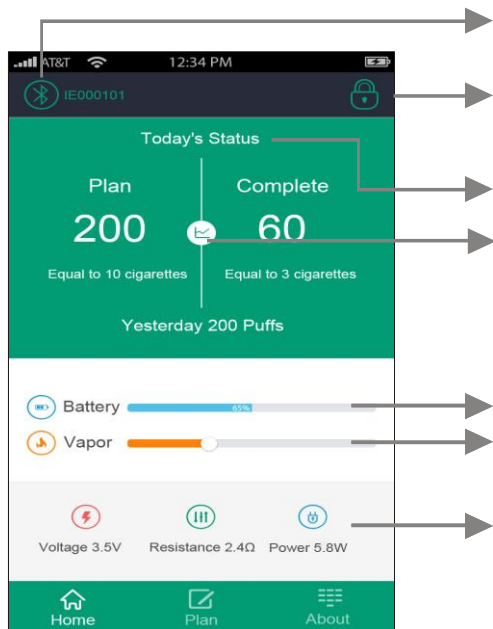
1.Login in

Open the APP IVAP.

click icon"bluetooth"to seach your ecig.

Click icon "go" to log in.

2.Home



The lock will appear when you setted the smoking plan,if the actual puff exceed the plan puffs,it will be light,you won' t smoke anymore,but you can click it to un-lock,or it is dark.

Display working figure

(If the atomizer not screw in the battery, the risistance is 9.9Ω,power is 0W, but if it is also that when the atomizer on that battery, the atomizer has broken,in general,this figure will be changeable with voltage).

Smoking status displayed in this page.

Light is connected,dark is not.

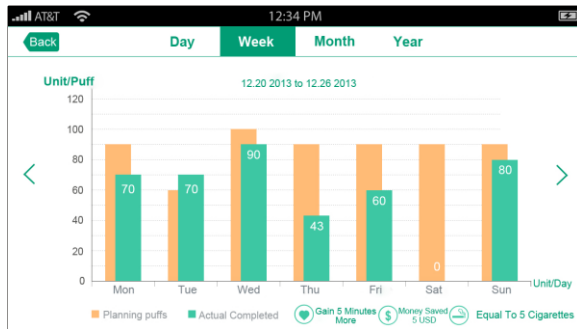
Click to show puffs statistics(day,week,month,year)

Auto-changeable according to the rest battery capacity.

Slide to adjust out-put voltage as you like.

For Android

Puffs statistics(day,week,month,year)



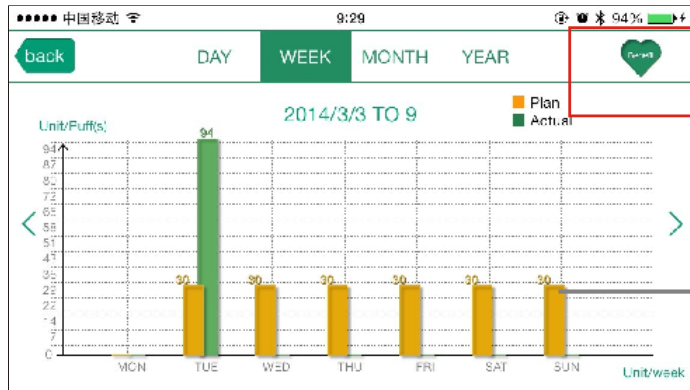
Histogram to show day and week statistics

Scattergram to show month and year statistics



Different Part

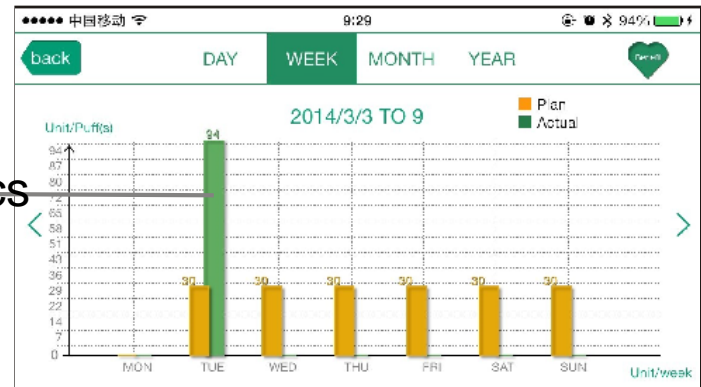
For IOS



Different Part

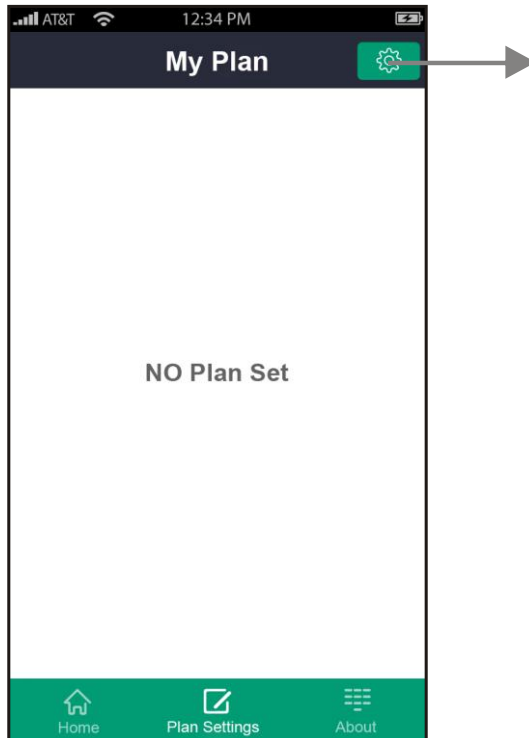
Histogram to show day and week statistics

Scattergram to show month and year statistics



To this page, we adopt wattage counter
(In this right of counter, there are two different models
which are used to show puff statistics in Cigarette1.0).

3. Plan Setting



Click to start plan setting in a week,
then the following page will be appeared.
Click again to start the following week plan
after you completed a week plan setting

For Android

Slide to choose the plan you want to try.

Different Part

The image shows three sequential screenshots of an Android app's 'Plan Settings' screen. Each screen has a 'Back' button, a 'Submit' button, and three tabs: 'Plan A', 'Plan B', and 'Plan C'.
- The first screenshot (Plan A) shows 'Planning Time: 2014-1-26 TO 2014-2-1' and 'Keep Puff(s) Per Day: 200'.
- The second screenshot (Plan B) shows 'Planning Time: 2014-1-26 TO 2014-2-1', 'From 200 Puff(s)', and 'Decline To 180 Puff(s)'.
- The third screenshot (Plan C) shows 'Planning Time: 2014-1-26 TO 2014-2-1' and a 'Manually Input Value:' section with a calendar view from 26 JAN to 1 FEB. A red box highlights the 'Submit' button, and an arrow points from the text 'Different Part' to it.

Plan A:
Set the puffs
keep on in a week.

Plan B:
Set the puffs decrease
progressing in a week.

Plan C:
Set the different
puffs in a week.

For IOS

Slide to choose the plan you want to try.

The image displays three mobile app screens for setting a smoking plan. Each screen has a 'Plan Set' header with a 'Back' button and three tabs: 'Plan A', 'Plan B', and 'Plan C'.
- **Plan A:** Shows 'Planning Time: 2014-1-26 TO 2014-2-1' and 'Keep Puff(s) Per Day: 200'. A red box highlights the 'Submit' button, with an arrow pointing to the text 'Different Part' below it.
- **Plan B:** Shows 'Planning Time: 2014-1-26 TO 2014-2-1', 'From 200 Puff(s)', and 'Decline To 180 Puff(s)'.
- **Plan C:** Shows 'Planning Time: 2014-1-26 TO 2014-2-1' and 'Manually Input Value:' followed by a vertical timeline of dates from 26 JAN to 1 FEB, each with an input field. The 'Submit' button is at the bottom.

Plan A:
Set the puffs
keep on in a week.

Plan B:
Set the puffs decrease
progressing in a week.

Plan C:
Set the different
puffs in a week.

In this page, you can set three models smoking plan to control your vapor once a week.

4.More

More Submit

Personal info ▾

Name:

Gender:

Age:

Settings ▾

Historical Cigarette info ▾

About >

Log out

Home Plan More

Set some information about you

Set some information about the e-juice you like

Set some information about the cigarette you like

Know more information about IVOD

Click to login your account out from
smartphone