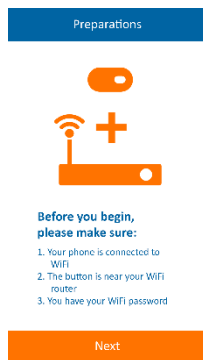


Installation guide for iPhone users

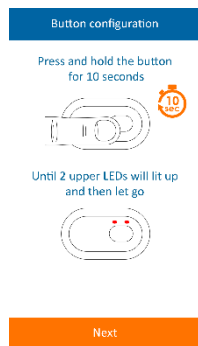
This manual will guide you thru the process of connecting the kwik button to the WiFi network

1. Install the kwik.me app
2. Open the app
3. Make sure that:
 1. Your iPhone is connected to WiFi network
 2. The button and the iPhone are near your router
 3. You have the password to the WiFi network

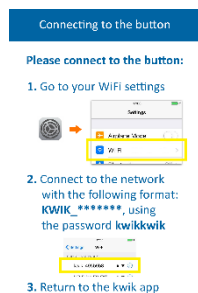
And click *Next*



4. Press and hold the button for 10 seconds. After 10 seconds the ring LED around the button will blink slowly.



5. Now you go to your iPhone's WiFi settings and connect to the kwik button, like you would connect to any other WiFi network. Click on the kwik button network from the WiFi list (the kwik button network is in the format of **kwik_*******), and enter the password **kwikkwik** when prompted.



Once successfully connected to the kwik button network, return to the kwik.me app. You will be automatically transferred to the next screen.

Installation guide for iPhone users

WiFi Settings

WiFi network name

Home_WiFi

WiFi password

Next

Success

We have successfully
configured your button

KWIK_0345159

Configure another button

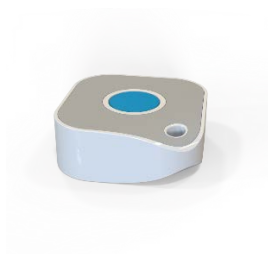
6. Enter your WiFi password and click *Next*

The kwik button will receive the WiFi credentials and configure itself. You will be notified once the process is finished

7. The One time WiFi setup is done. You have successfully configured your button. Now you can close the app or configure another button.

8. When you want to use the button just click it and follow the LEDs feedback to check if it connects to the internet.

Upon the click, the ring around the button will lit up.



9. While waiting, the LED ring will spin.
10. When the message from the button is sent successfully to the internet, the ring LED will Blink twice – fast
11. If the communication process will fail, the ring LED will blink 4 times. In this case check the following:

1. Your WiFi network is available
2. Your WiFi network is connected to the internet
3. WiFi password – try to configure the button again,

Installation guide for iPhone users

and make sure that the password is correct.

Caution:

RISK OF EXPLOSION IF BATTERY IS REPLACED BY AN INCORRECT TYPE.

DISPOSE OF USED BATTERIES ACCORDING TO THE INSTRUCTIONS.

FCC Compliance Statement

This device has been tested and found to comply with the limits for a Class B digital device, pursuant to Part 15 of the FCC Rules. These limits are designed to provide reasonable protection against harmful interference in residential installations. This equipment generates uses and can radiate radio frequency energy and, if not installed and used in accordance with the instructions, may cause harmful interference to radio and television reception.

However, there is no guarantee that interference will not occur in a particular installation. If this device does cause such interference, which can be verified by turning the device off and on, the user is encouraged to eliminate the interference by one or more of the following measures:

- Re-orient or re-locate the receiving antenna.
- Increase the distance between the device and the receiver.
- Connect the device to an outlet on a circuit different from the one that supplies power to the receiver.
- Consult the dealer or an experienced radio/TV technician.

WARNING! Changes or modifications to this unit not expressly approved by the party responsible for compliance could void the user's authority to operate the equipment.

This device complies with FCC Rules Part 15: Operation is subject to two conditions: (1) This device may not cause harmful interference, and (2) this device must accept any interference that may be received or that may cause undesired operation.