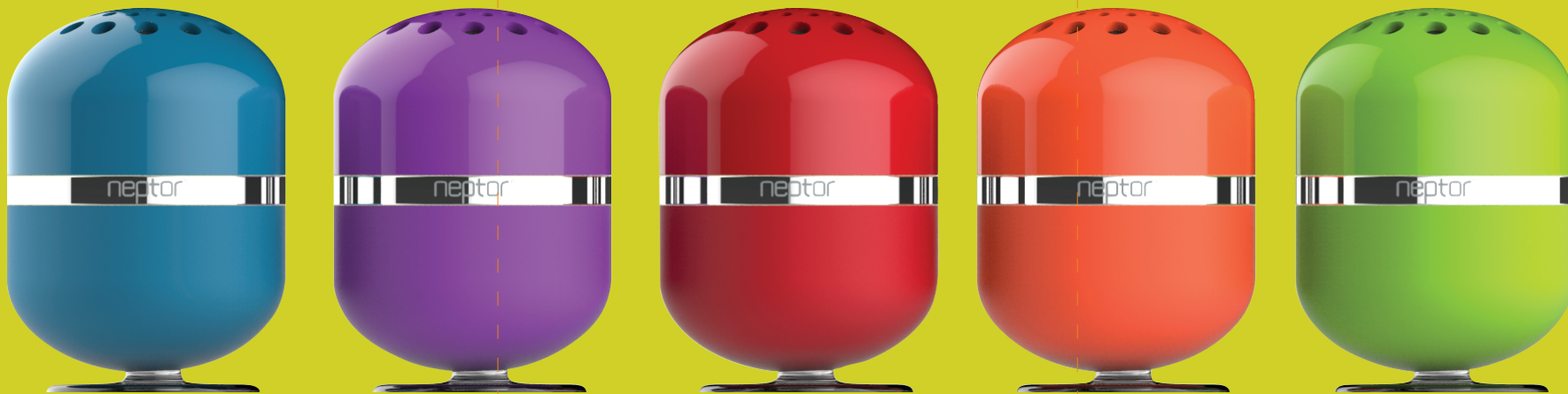


A T

# TOUCH

# NEPTOR NPSP01 WIRELESS PORTABLE BLUETOOTH SPEAKER MANUAL

neptor<sup>®</sup>



## ABOUT NEPTOR

Its name derives from the planet Neptune, which produces more energy than what the Sun provides. The Neptor line was developed to power you through every moment of your life by keeping you connected to the people and devices within it. We believe technology should be colorful, fun to use, and elegantly designed - identifies that make up each of our portable batteries, speakers, and accessories.

Neptor provides you with incredibly convenient power and connectivity to your mobile devices and is trusted by individuals who value fashion and function. Whether it is capturing your favorite memories on camera, video chatting with friends and family across the world on a tablet, or interactively controlling your favorite tunes; we bring out-of-this-world technology to help keep your earthly devices ready for action anywhere and everywhere.

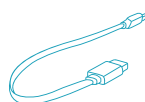


www.neptor.com

## PACKAGE CONTENT



NPSP01  
Wireless Portable  
Bluetooth Speaker



USB to Micro USB  
Charging Cable



User Manual

## SAFETY INSTRUCTIONS

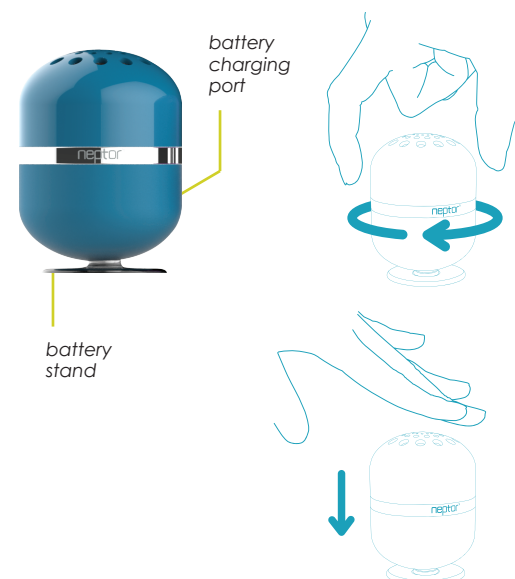
Warning: Basic precautions should always be followed to reduce the risk of fire, electrical shock and injury to persons, including the following:

- Keep this product away from children
- Do not use this product near water
- Expose to liquid could result in electric shock
- Do not expose this product to high temperatures
- Do not dispose of the product in fire. Its batteries may explode
- Check local codes for disposal instructions

## SPECIFICATIONS

- Bluetooth Version: V3.0+EDR
- Bluetooth Profiles: 2DP, HFP, AVCRP
- Audio Inputs: Bluetooth
- Total RMS Power: 2W RMS
- Frequency Response: 60Hz~20kHz
- Input Voltage: 5V @ 500mA
- Dimensions: Diameter 60mm × Height 83mm
- Weight: 160g
- Microphone: Omnidirectional
- Operating Time: 3.5 hours
- Recharge Time: 1.5 hours

## PRODUCT OVERVIEW



### Volume Level

**Twist** the speaker clockwise to turn volume up.  
Twist counterclockwise to turn volume down.

### Power ON/OFF, Bluetooth

Press and hold for 3 seconds to power on and enter Bluetooth pairing mode. Press and hold for 3 seconds to power off.

### Pause/Play Music, Hands-Free Phone Call

**Tap** once to pause and play music. For hands-free calls, tap once to pick up the line and tap it again to hang up.

### How To Touch Control Your Speaker



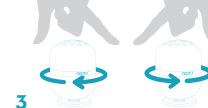
1

Press the speaker for 3 seconds to power on; the light will activate. Be sure Bluetooth is enabled on your mobile device.



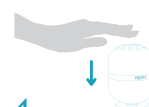
2

After the alert tone, the device can now be paired; the light will blink. When pairing is completed, the light will remain on.



3

Twist clockwise to turn volume up. Twist counterclockwise to turn volume down.



4

For music, tap once to pause, tap again to resume play.



5

For incoming calls, tap once to pick up, tap again to end.



6

Press the speaker for 3 seconds to power off.

## LIMITED WARRANTY

Neptor warrants that the product, in the course of its normal use, will be free from defects in material and workmanship for a period of one (1) year. This limited warranty period shall commence on the purchase date appearing on your purchase receipt. Neptor shall have no liability for any product returned if Neptor determines that the product was not purchased from authorized retailers, that the asserted defect a) is not present, b) cannot reasonably be rectified because of damage occurring before Neptor receives the product, or c) attributable to misuse, improper installation, alteration (including removing or obliterating labels and opening or removing parts). The foregoing warranty shall extend to repaired or replaced products for the remaining of the applicable period of the original warranty or ninety (90) days from the date of shipment of a repaired or replaced product, whichever is longer.

**Federal Communications Commission (FCC) Interference Statement**

This equipment has been tested and found to comply with the limits for a Class B digital device, pursuant to Part 15 of the FCC Rules.

These limits are designed to provide reasonable protection against harmful interference in a residential installation. This equipment generate, uses and can radiate radio frequency energy and, if not installed and used in accordance with the instructions, may cause harmful interference to radio communications.

However, there is no guarantee that interference will not occur in a particular installation. If this equipment does cause harmful interference to radio or television reception, which can be determined by turning the equipment off and on, the user is encouraged to try to correct the interference by one of the following measures:

- Reorient or relocate the receiving antenna.
- Increase the separation between the equipment and receiver.
- Connect the equipment into an outlet on a circuit different from that to which the receiver is connected.
- Consult the dealer or an experienced radio/TV technician for help.

This device complies with Part 15 of the FCC Rules. Operation is subject to the following two conditions:

(1) This device may not cause harmful interference, and (2) this device must accept any interference received, including interference that may cause undesired operation.

FCC Caution: Any changes or modifications not expressly approved by the party responsible for compliance could void the user's authority to operate this equipment.

**RF exposure warning**

This equipment complies with FCC radiation exposure limits set forth for an uncontrolled environment.

The equipment must not be co-located or operating in conjunction with any other antenna or transmitter.