

## Label Location Information for NINA-B306

### Certification Application

Model: MC-BASE-EVO

IC: 12298A-B1

FCC: 2ACNQB1

To be able to fit the FCC/IC certification number on the label the size has to be smaller than 4 points. Using such small font size makes the certification number too small to be readable. Therefore, in accordance with CFR 47 §2.925 (f) and consistent with u-blox AG's original approval the FCC ID and ISED Certification Number is not printed on the label, but instead placed in the user manual.



Figure 1: UBlox NINA-B306 Top

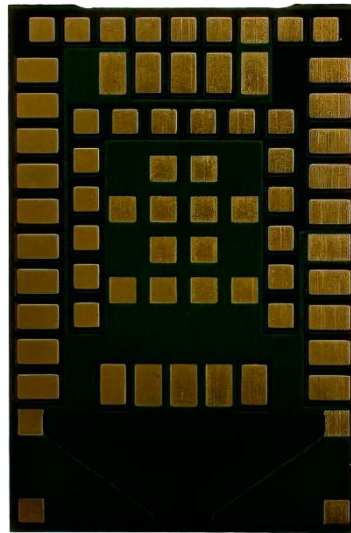


Figure 2: UBlox NINA-B306 Bottom