

*American Standard*

# Installation / Operating Instructions

## 1660.808 Series

### Lyric 3-Function Showerhead with Wireless Speaker

*Thank you for selecting American Standard...the benchmark of fine quality for over 100 years.*

*To ensure that your installation proceeds smoothly please read these instructions carefully before you begin.*



M965628

#### Recommended Tools



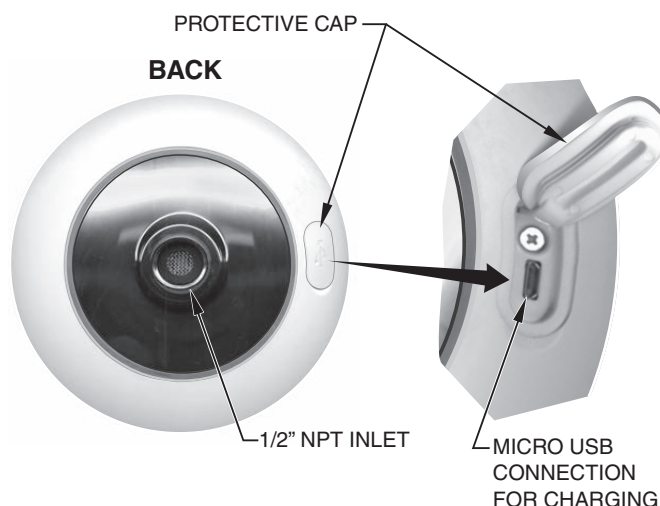
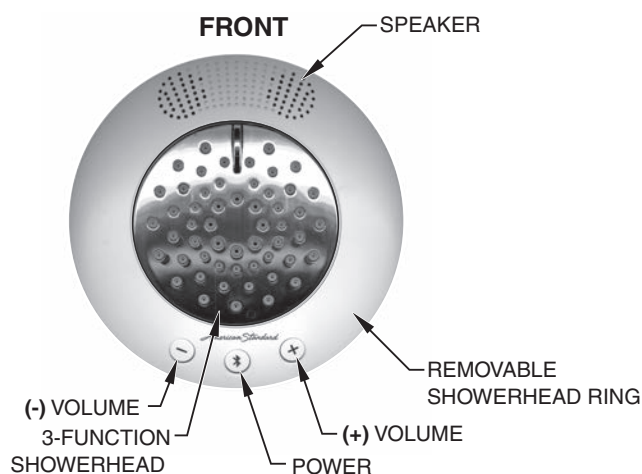
Teflon Tape



Adjustable Wrench

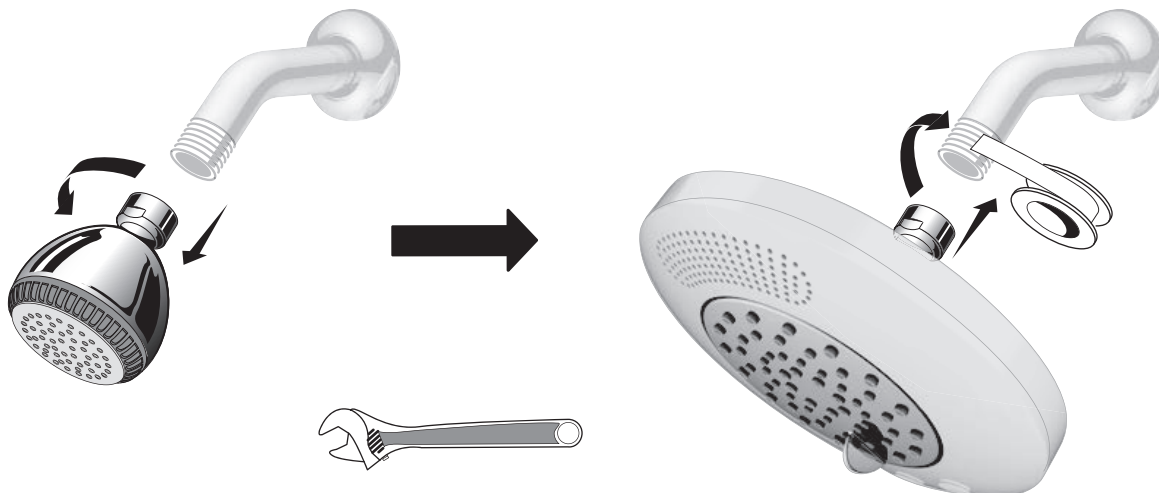


Channel Locks



## 1 INSTALL SHOWERHEAD

- Remove the existing showerhead with an adjustable wrench.
- Apply teflon tape to the threads of the shower arm (not included) if necessary.
- Using an adjustable wrench, install the showerhead to the shower arm (not included).



# INITIAL CONFIGURATION

## STEP 1: TURN ON THE BLUETOOTH DEVICE AND THE SHOWERHEAD RING

- Turn on the Bluetooth setting on your device.
- Press and release the power button (middle) until showerhead ring beeps twice.

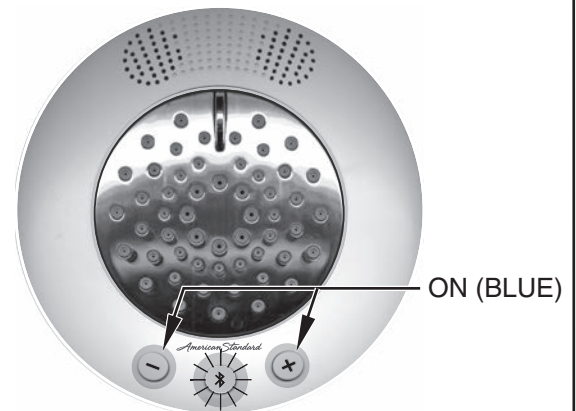


## STEP #2: BLUETOOTH PAIRING

- The power button (middle) will start to blink (blue) several times and volume buttons (plus and minus) will remain constantly on (blue). Go to the Bluetooth settings on your device and select the "Lyric" device to start the pairing process.

### NOTES:

- The showerhead ring can store a maximum of 4 Bluetooth devices.
- Adjusting the volume on your Bluetooth device and/or showerhead ring might be necessary.



## DELETE A BLUETOOTH DEVICE FROM MEMORY

- To delete a Bluetooth device from memory, press and hold the power button for approximately 5 seconds until you hear a single beep. This will delete the Bluetooth device that has been used the least of time. However, if this device is to be re-paired with the showerhead ring, another device would need to be deleted from memory.



# ADDITIONAL FEATURES

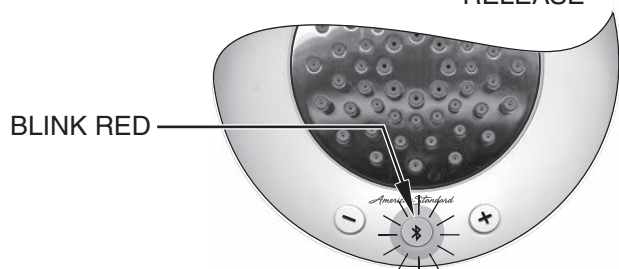
## TURN OFF THE SHOWERHEAD RING

- Press and release the power button (middle). All lights will turn off. The showerhead ring will automatically turn off in 2 minutes when there is no device in range.



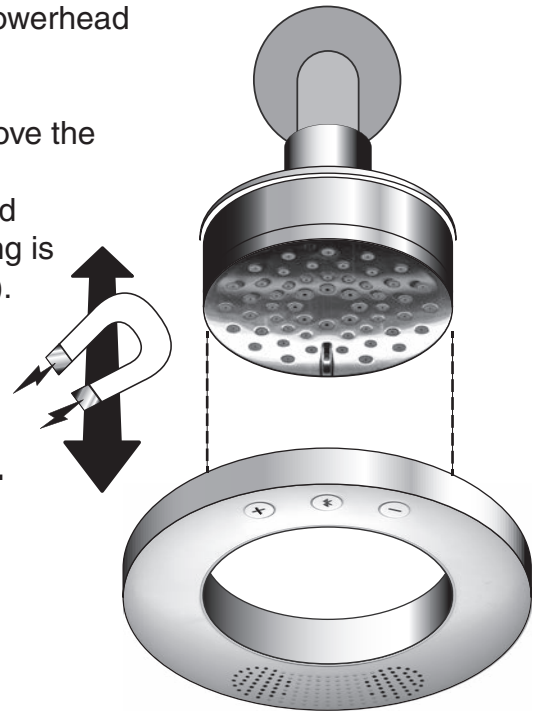
## LOW BATTERY INDICATOR

- The power button (middle) will start to blink red.



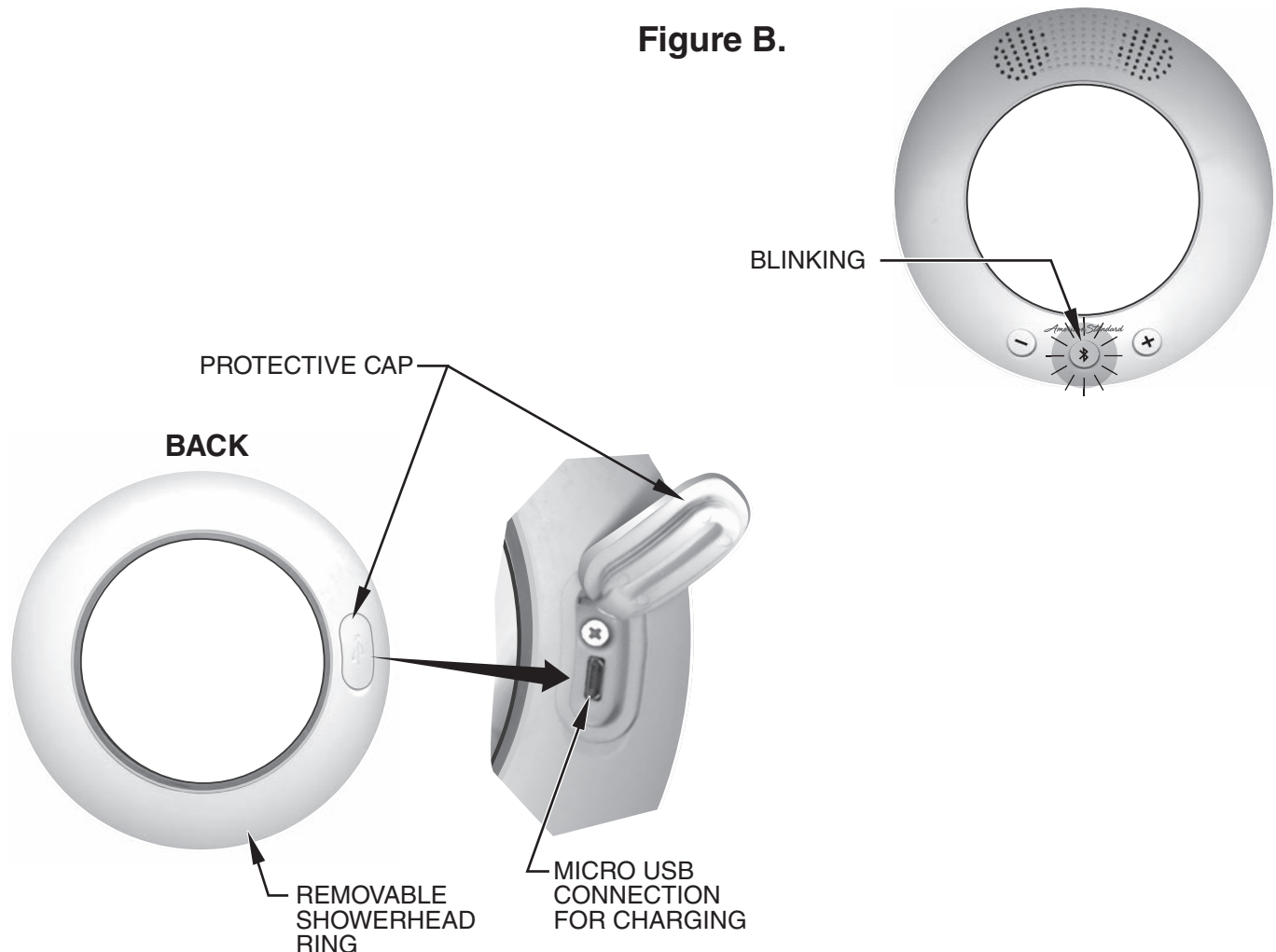
## CHARGING THE SHOWERHEAD RING

- **Figure A.** With the showerhead ring powered off, pull showerhead ring off the showerhead. This is a magnetic attachment to the showerhead.
- **Figure B.** On the back side of the showerhead ring, remove the protective cap.
- Connect the USB cable between the showerhead ring and a laptop, PC, or USB wall plug. When the showerhead ring is charging, the power button (middle) will start to blink (red). Charging is complete when the power button starts to blink (blue). This process can take 3-5 hours to complete.
- **Figure A.** Reinstall the showerhead ring onto showerhead.



**Figure A.**

**Figure B.**



### FCC Warning:

This equipment has been tested and found to comply with the limits for a Class B digital device, pursuant to part 15 of the FCC Rules. These limits are designed to provide reasonable protection against harmful interference in a residential installation. This equipment generates, uses and can radiate radio frequency energy and, if not installed and used in accordance with the instructions, may cause harmful interference to radio communications. However, there is no guarantee that interference will not occur in a particular installation. If this equipment does cause harmful interference to radio or television reception, which can be determined by turning the equipment off and on, the user is encouraged to try to correct the interference by one or more of the following measures:

- Reorient or relocate the receiving antenna.
- Increase the separation between the equipment and receiver.
- Connect the equipment into an outlet on a circuit different from that to which the receiver is connected.
- Consult the dealer or an experienced radio/TV technician for help.

MODIFICATION: Any changes or modifications not expressly approved by the grantee of this device could void the user's authority to operate the device.

This device complies with part 15 of the FCC Rules. Operation is subject to the following two conditions:

- 1) This device may not cause harmful interference, and
- 2) This device must accept any interference received, including interference that may cause undesired operation.

### IC Warning:

-English:

This device complies with Industry Canada RSS standard(s). Operation is subject to the following two conditions: (1) this device may not cause interference, and (2) this device must accept any interference, including interference that may cause undesired operation of the device.

-French:

Le présent appareil est conforme aux CNR d'Industrie Canada applicable aux appareils radio

Exempts de licence. L'exploitation est autorisée aux deux conditions suivantes :

(1) l'appareil ne doit pas produire de brouillage, et (2) l'utilisateur de l'appareil doit accepter tout brouillage radioélectrique subi, même si le brouillage est susceptible d'en compromettre le fonctionnement."

CAN ICES-3 (B)/NMB-3(B)