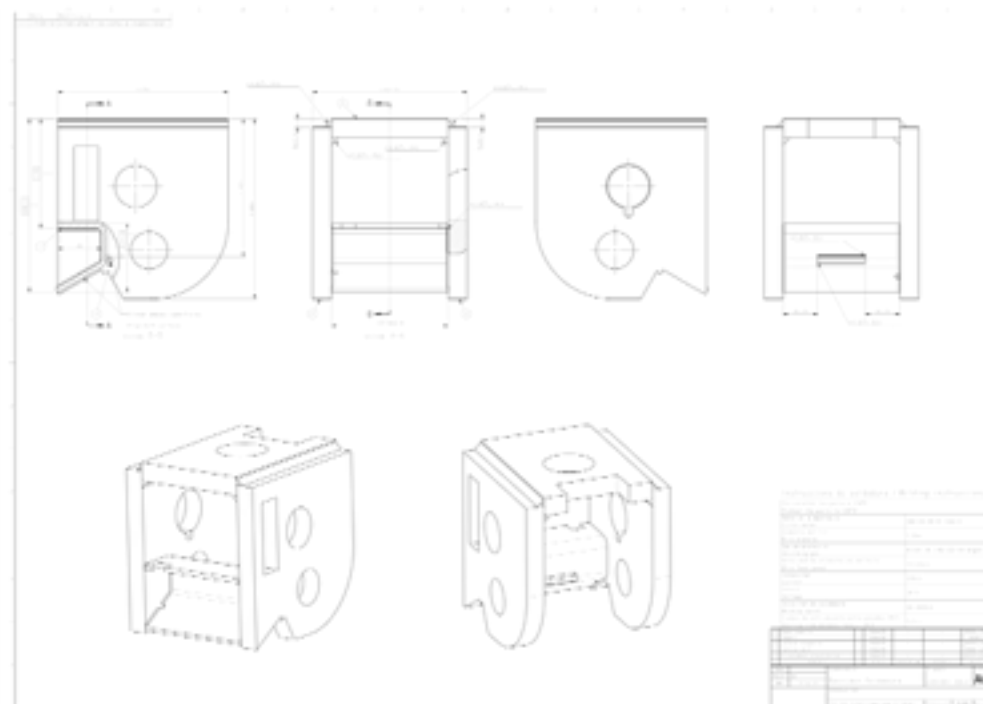


## INSTALLATION

(FCC ID: 2ACLHEVO, IC ID: 12039A-EVO)

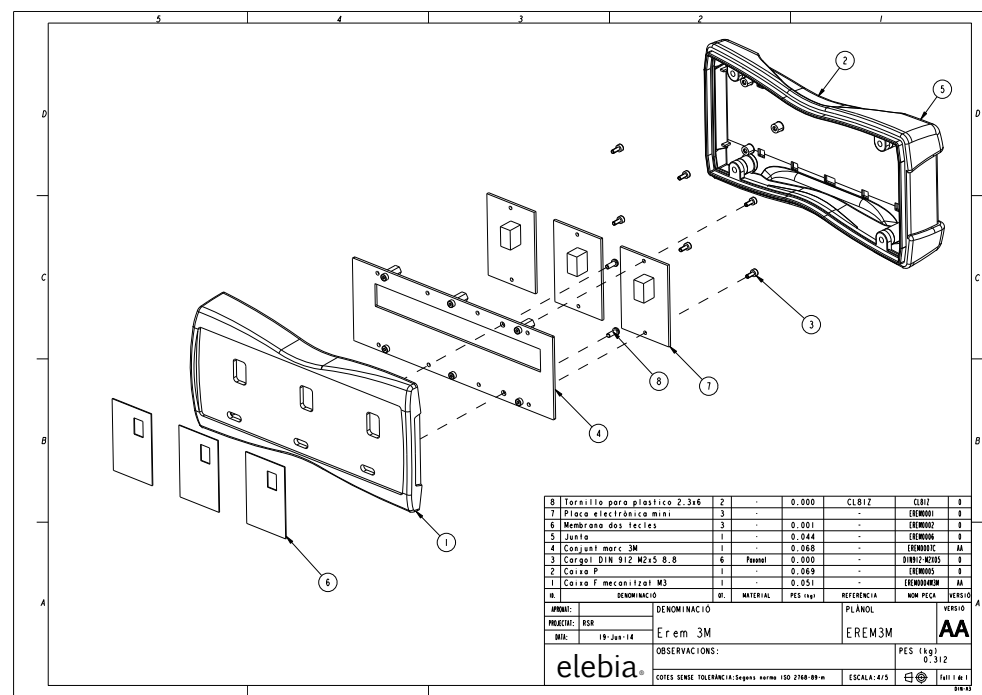
### RECEIVER:

Receiver will be installed in autohooks models e2, e5, e10, e20, installed into the steel body (part number evo1001). Thickness of walls is 20mm, so it will act as shielding. Nevertheless tests were successfully passed without any shielding.



TRANSMITTER:

Emitter will be installed in the remote controls models e5-erem, eMaster, erem WS, erem 3M, erem 4M. Those remotes use ABS plastic enclosures with thickness from 3 to 5 mm.



Best regards.

Oscar Fillol Vidal

CEO

38.