



SENKO

SENKO SMART Probe – Wi-Fi Model

USER MANUAL

Fiber Optic Inspection made easy



Smart Probe™

EASILY CONNECT TO LAPTOPS, SMARTPHONES, & TABLETS



Welcome Note

Package Content

Battery Caution and Warning

Regulatory Compliance

Product Specifications

Product Overview

Preparation

Start Inspection

App Functions

Thank you for purchasing the SENKO Smart Probe, before you operate the Probe, please read this manual carefully.

Package Contents,

- 1x Smart Probe
- 1x 2.5mm inspection tip (installed on Probe)
- 1x 1.25mm inspection tip
- 2x BL-5C Li-ion Battery Pack
- 1x External Battery Charger
- 1x USB charging cable
- 1x Hand Strap
- 1x Soft carrying case

Battery WARNING:

Use on right polarity as indicated to connect to the Probe



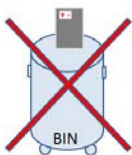
Do not immerse battery in water



Do not short circuit



Do not put on fire



Dispose of or Recycle responsibly

CAUTION:

RISK OF EXPLOSION IF BATTERY IS REPLACED BY AN INCORRECT TYPE.

DISPOSE OF USED BATTERIES ACCORDING TO THE INSTRUCTIONS.



Disposal:

All electrical and electronic products including batteries should be disposed of separately from the municipal waste stream via designated collection facilities appointed by the government or the local authorities.

Regulatory Compliance

FCC

This device complies with part 15 of the FCC Rules. Operation is subject to the following two conditions: (1) This device may not cause harmful interference, and (2) this device must accept any interference received, including interference that may cause undesired operation.

Changes or modifications not expressly approved by the party responsible for compliance could void the user's authority to operate the equipment.

NOTE: This equipment has been tested and found to comply with the limits for a Class B digital device, pursuant to part 15 of the FCC Rules. These limits are designed to provide reasonable protection against harmful interference in a residential installation. This equipment generates, uses and can radiate radio frequency energy and, if not installed and used in accordance with the instructions, may cause harmful interference to radio communications. However, there is no guarantee that interference will not occur in a particular installation. If this equipment does cause harmful interference to radio or television reception, which can be determined by turning the equipment off and on, the user is encouraged to try to correct the interference by one or more of the following measures:

- Reorient or relocate the receiving antenna.
- Increase the separation between the equipment and receiver.
- Connect the equipment into an outlet on a circuit different from that to which the receiver is connected.
- Consult the dealer or an experienced radio/TV technician for help.

Industry Canada This device complies with Industry Canada licence-exempt RSS standard(s).
Operation is subject to the following two conditions: (1) this device may not cause interference, and (2) this device must accept any interference, including interference that may cause undesired operation of the device.

Le présent appareil est conforme aux CNR d'Industrie Canada applicables aux appareils radio exempts de licence. L'exploitation est autorisée aux deux conditions suivantes : (1) l'appareil ne doit pas produire de brouillage, et (2) l'utilisateur de l'appareil doit accepter tout brouillage radioélectrique subi, même si le brouillage est susceptible d'en compromettre le fonctionnement.

CAN ICES-3(B)/NMB-3(B)

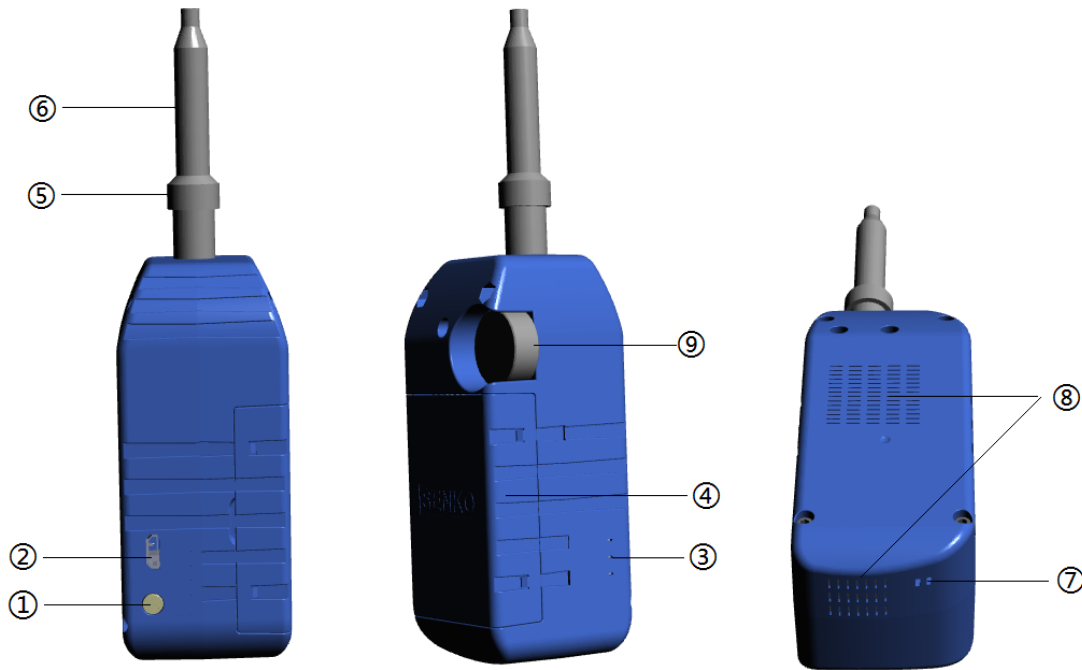
Japan ARIB T66 certified. Registration number R203-JN3056
An exact Japanese translation of this user manual will be supplied.

CE R&TTE:
This device complies with the tests and standards as stipulated in the R&TTE Directive.
—RF: EN300328 V1.8.1
—EMC: EN301489-1 V1.9.2 & EN 301 489-17 V2.2.1
—LVD: EN60950-1
—Evaluation: EN62209

Product Specifications

Item	Description
Part Number	SCK-VM2000-01
Image Sensor Type	2 Megapixel 1/2.7" CMOS
Image Resolution	960px x 544px
Optical Resolution	<1.0µm
Field Of View	457µm x 259µm.
Magnification	328 (based on 7" screen size)
Video Frame Rate	15fps
Focus	Adjustable Manual Focus
Zoom/magnification	x1.25, x1.5 and x2.0 (Digital)
Illumination Method	Coaxial
LED/ LED Wavelength	Blue / 470nm
Connectivity	Wifi 802.11g/n
Range	5m (unobstructed)
Battery/Type	2 x 1,150mAh rechargeable Li-ion / BL-5C
Power Consumption	600mA
USB Input (charging)	Micro USB. DC 5V, 1A max
Operation Temperature	-10 °C ~ +50°C
Storage temperature	-30°C ~ +100°C
Storage humidity	5% ~ 90%, Non-Condensing
Weight	147g incl batteries
Dimensions (without tip)	137.7mm (L) x 40.0mm (H) x 37.4mm (W)

Product Overview



- ① - Power Button
- ② - Micro USB Port
- ③ - LED

Press and hold to Switch On / Off the Probe

Used for charging only, cannot be used for use with PC/Laptop
Status Indication.

When Battery in recharging process:

Red – Battery is in charging progress
Blue – Battery charging finished

When Probe is in use,

Green – The Probe is in operation
Flashing Green – Error on connection between Probe and Tablet
Flashing Red – Battery Running Low

- ④ - Battery Cover
- ⑤ - Tip Fastening Nut
- ⑥ - Inspection Tip
- ⑦ - Hand Strap Slot
- ⑧ - Heat Release Vent
- ⑨ - Focusing Wheel

Removable battery cover

Turn counter clockwise to fasten tip, clockwise to release

Changeable Tip

Use hand strap to prevent accidental drops

Avoid covering ventilation vents when whenever possible

Rotate it to adjust focus

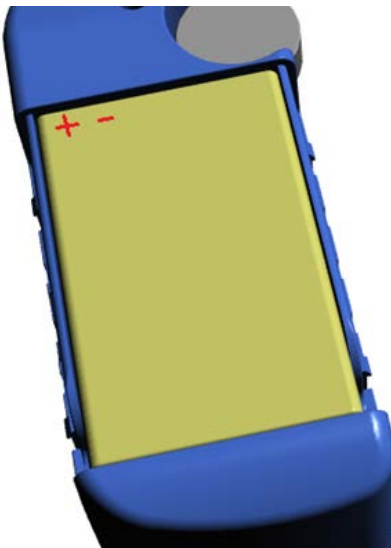
Preparation

Battery Installation

Open the battery cover and insert the batteries as shown below.



1. Remove the Battery Cover upward gently from direction as shown
2. Check and locate the polarity pin "+" and "-" before installation of battery
3. Follow the Battery and Connection Pin polarity sign and place 1st battery in compartment

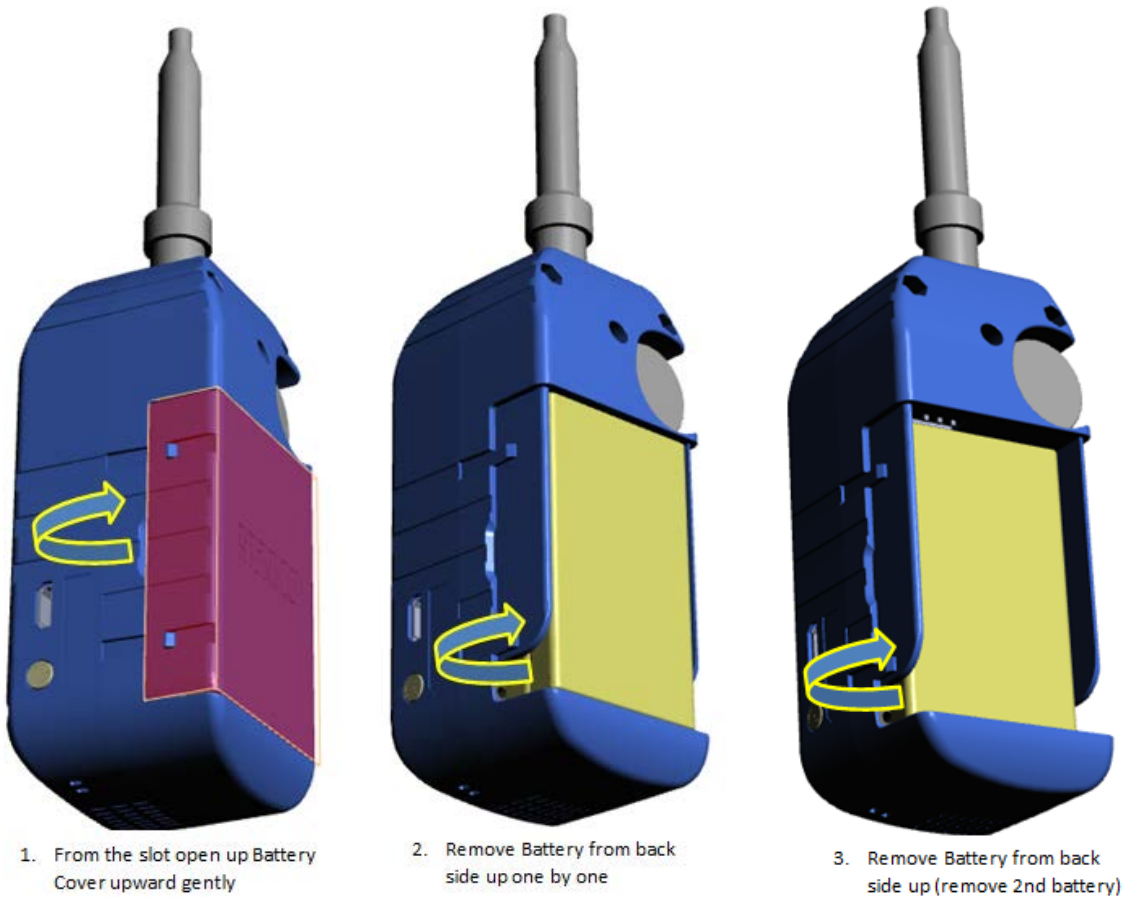


4. Follow the Battery and Connection Pin polarity sign and place 2nd battery in compartment



5. Close the Battery Cover with gentle press down from 2 sides evenly

Removal or Change of Batteries



NOTE,

1. The batteries are not installed in device on purchase, please fully recharge batteries and install batteries before use of the device, use only the USB charging cable provided,
2. Two pieces of the BL-5C batteries are provided in the set, the Smart Probe can be operated continuously for approx. 1 hour and 30mins with one single fully recharged battery, two batteries working together in the Probe will increase the operating time to approx. 3 hours (based on both 2 batteries fully recharged, the battery capacity will vary and gradually decrease upon the battery life shortening).
3. Please REMOVE the batteries from the Smart Probe if the device is intended for storage or to be transported again.

Install SENKO Vue App

Before using the Smart Probe, please download and installed the SENKO Vue App to your Andoid smartphone or tablet PC. The App can be downloaded and installed directly from Google Play tore. Simply enter the Play Store, search for SENKO Vue, download and install.

Connecting Android Device to Smart Probe

1. Switch the probe on by pressing and holding the power button until the green LED is lit.
2. Tap the “Smart Probe” icon to start the App.



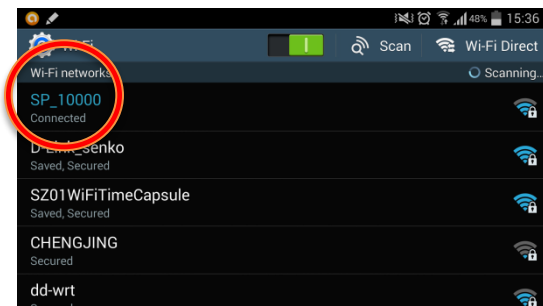
3. Startup splash screen below will briefly appear.



4. At the Home Screen (below), tap “connect” to connect to the Smart Probe.



5. The Wi-Fi connection settings screen below will appear. Select the SSID of the probe which will start with "SP_"



6. Enter 12345678 when prompted for password.
7. Once connected, tap the "back/return" button the phone or tablet to return to the Home Screen.

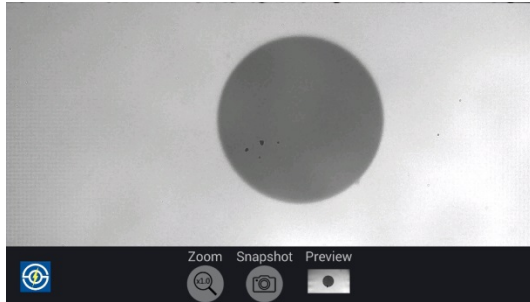
Start Inspecting

Once the Android device is connected to the Probe, inspection can begin. The SENKO Vue App provides zoom, snapshot, snapshot review and file rename functions.

1. At the Home Screen tap "Inspect" to view live image of the endface.

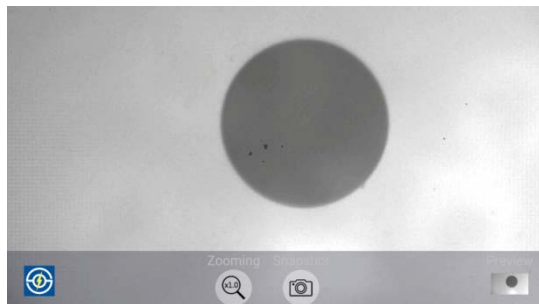


2. The endface should appear full screen as below with a menu containing Zoom, Snapshot and Preview buttons. The menu can be hidden from view or unhidden with a tap anywhere on the screen.

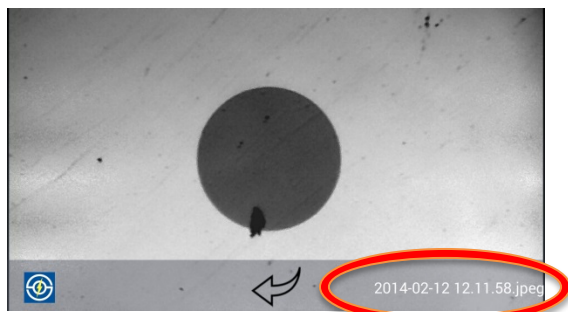


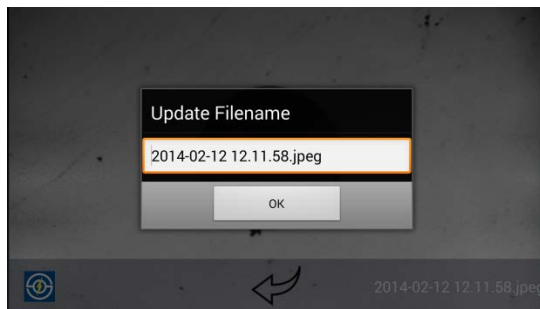
App Functions

1. Consecutive taps on the Zooming button will cycle through x1.25, x1.5, x2 magnification of the live image then back to the original non zoom image. Alternatively you can zoom in and out using the open and pinch gestures with thumb and index finger.
2. To take a Snapshot, tap the snapshot button of the live image (without the menu).
3. To review the snapshot, tap the preview button. You can cycle through previous snapshots by swiping the screen with a finger from right to left. To go back to live image just tap the “back/return” button.

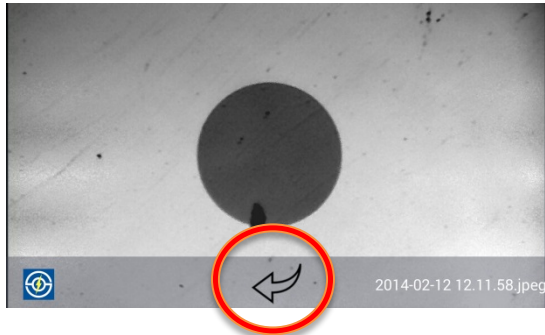


4. To edit the snapshot name, tap on the snapshot's current name on the right of the menu bar. See below.

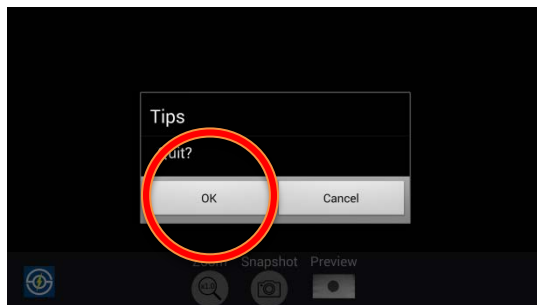




5. To return to live image, tap the return button.



6. To exit the App, tap the “back/return” button whilst viewing a live image and tap “Ok” to quit.



Other Information.

There are a few things to note.

1. The probe will work with one or both batteries inserted as long as there is sufficient charge.
2. Devices will not be able to connect to the probe whilst it's connected to a USB power source WITHOUT any batteries inserted. Wi-Fi is not available when the probe is running solely from a USB power source without a battery inserted.