

User Manual

Tablet PC

Model No.: 9021AT

Shenzhen JNCOTA TECHNOLOGY Co., Ltd

Android4.4
User Manual

Latest version:1.0

2014-06-13

Contents

Contents	1
Revision history	3
Declaration	3
Precautions	3
Overview	4
Basic Functions	4
Appearance	5
Accessories.....	5
Key	5
MID Applications	6
State Icons.....	6
Preparation.....	7
System Configurations.....	7
ON/OFF/Standby.....	8
Power Reset.....	8
Connecting PC and Data Transmission.....	8
Charge.....	9
Use Micro SD card.....	9
Basic Function	9
Main screen.....	9
Main menu	10
Setting	11
Wireless and networks.....	11
Device	12
Personal.....	13
Accounts	14

System	14
Music	15
Video&Picture.....	15
Online.....	19
Camera	20
Email	21
Play store	22
Calendar	22
Clock	23
Miracast.....	25

Revision history

Date	Version	Description
2014-06-13	V1.0	New version released

Declaration

1. The information in this manual may not, except under written license by The Company, be copied, transmitted, distributed, or stored.
2. Although efforts have been made for correctness and completeness during the preparation of the manual, there is no guarantee that this manual is free from any error or omission. The Company assumes no reliability regarding the errors or omissions that might exist in the manual.
3. For sustainable development, The Company reserves the right to modify and improve any product described in this manual without prior notice.
4. Under no circumstance shall the Company assume any liability, direct or indirect, related to data or income loss, or any special, accidental, incidental or indirect losses.在未

Precautions

For the correct use and good performance of the player, the user must fully understand the manual as well as strictly follow the instructions provided.

- Please avoid high temperature (over 35°C) or low temperature (below -5°C).
- Never knock the main machine violently.
- Never contact with chemicals such as benzene, thinner etc.
- Do not close to strong magnetic field, electric field etc.
- Keep away from direct sunlight or heating appliances.
- Never privately disassemble, repair or modify MID.
- Using MID and the earpiece during bicycling, car and motorcycle driving are likely to cause danger.
- Never use higher volume, which may damage your hearing ability.
- Divide scraped packing, batteries, old electronic products and dispose them properly.

Overview

Basic Functions

1. Music play: support global audio formatted file.
2. Video play: support global video formatted file.
3. Online Video: support Tudou, Youku, QiYi, Tencent and etc.
4. Picture browse: support JPEG, BMP, GIF, PNG formats.
5. Internet chat tool: support QQ、MSN, SKYPE, Wechat and etc.
6. Browser: Google browser, support Chrome label style, Google search etc.
7. Game: support JAVA game, G-sensor game, large 3D game.
8. TV OUT: Support HDMI synchronous display.
9. Input: Support Android Pinyin input and other mainstream hand input software.
10. Setting function: support display and setting of each function's property.
11. File system: support FAT/FAT32/ NTFS and exFAT.
12. Support more than 4GB file access, and multistage catalogues.
13. USB driver: support host/OTG/slave
14. Support peripheral with USB port of mouse、keyboard、Ethernet、3G dongle and etc.

Appearance



Accessories

GS702C attaches the following accessories:

Accessories	Functions
Adaptor	Charging for MID
MID connects to USB cable	Using in connecting MID and PC to transmit data

Key

1. Key

No.	Name	Function Definition
1	Power	(1) long press to turn on/turn off the player (entering power off interface prompt) (2) long press it over 8s to reset player (3) short press to turn on/turn off the screen, entering lock screen standby mode.

2. Touch operation

No.	Name	Function Definition
1	Short press	It indicates the press time shorter than 1.2s, it mainly used in selecting menu, confirm and etc.
2	Long press	It indicates the press time longer than 1.2s.

3	Slide/Drag operation	It belongs to identify the touch trace direction. Mainly used in picture/page turning/drag and etc.
4	Handwriting identification	It mainly used in inputting characters/symbol.
5	Virtual key	It belongs to virtual keyboard.

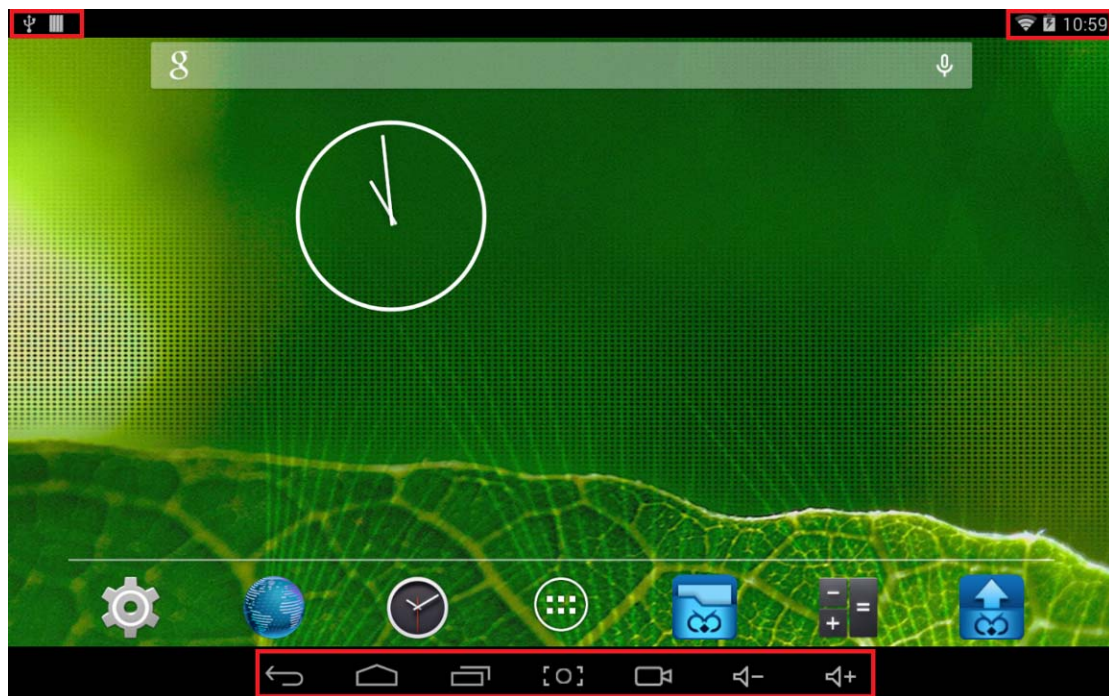
MID Applications

Some applications can custom-make according to users' need. The following list is the common basic applications:









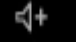
State Icons

Status bar menu are as follows:




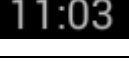




On the bottom of screen status bar, there are four operation icons on the left side:

Icons	Implications
Back up soft key 	Turn back to previous interface, its function is similar to BACK key
Home soft key 	Back to main interface, its function is the same as HOME key.

Shortcut key		List the common applications and its thumbnail, then click to enter directly.
Screenshot key		Full screenshot
Screen Recorder key		Screen Recorder
Vol-		decrease volume short-cut key, short press to decrease one frame volume
Vol+		increase volume short-cut key, short press to increase one frame volume

The icons on the left side display the current state information of MID:

Icons	Implications
USB connecting state 	Display the USB connecting status
USB debugging state 	Display whether it connected the USB debugger.
SD card connecting state 	It prompts when SD card was pulled out.
Time 	Display current time
Wi-Fi 	MID has join up the internet via Wi-Fi. the more the signal, the stronger the signal is.
Battery 	Showing the volume of battery or charging state.

Preparation

System Configurations

Operation system: Windows 7/Vista/XP/2K/ME/98(needs to install driver)/ubuntu 9.0 and above/Mac OS 10

CPU: It is at least Pentium-133MHz

RAM: at least 32MB

Hard disk free space: at lease 100MB

Video card: 640*480 above mode, at least it is enhance color (16 bit)

ON/OFF/Standby

ON: Pressing Power key, the player displays startup picture and then enters to main interface

OFF: Long pressing Power button 5s on main interface, system will prompt whether to power off, then click “YES”, the MID will power off normally.


power saving standby: on power on state, press Power key to enter lock power saving standby state, then press Power key again to lighten the screen, unlock the screen according to the indication.

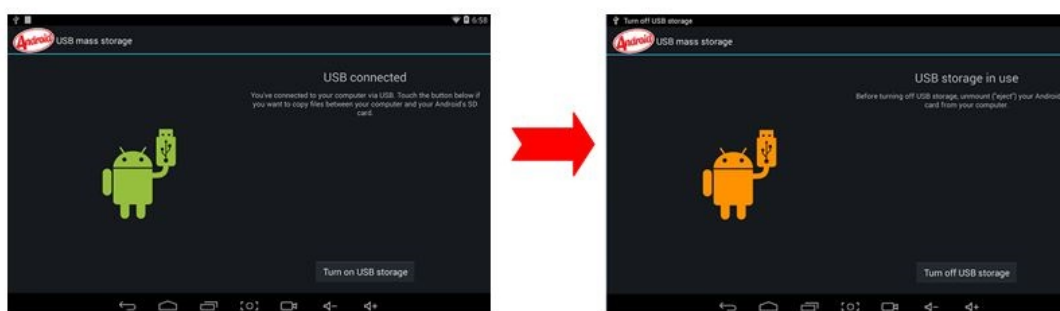
Power Reset

Press RESET over 8s to restart MID in case it is crashed during playback.

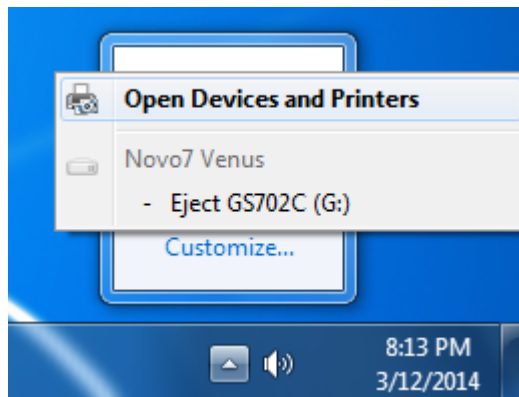
Connecting PC and Data Transmission

Connecting PC and MID by using USB cable, users can operate the disk through PC.

- 1.USB icon  will be appeared on the lower right side of status bar, it refers to USB has been connected and you can press the icon.
2. You can enter data transmission status, when the menu appears, press “USB is connected” and it will pop-up a window, then, press “open USB storage device”.
3. You can find the MID storage card and SD card (if it has card), after transferring the data, press “close USB storage device”, then you can exit data transmission status



【Note】: before quit the state of data transmission, if the system of U disk or card is NTFS, please safety remove them in PC, then click “close USB storage device”, otherwise the file may be missing, shown as the following screenshot:



Charge

The player uses high volume Lilon. You can connect MID and USB port of PC or other attached adaptor in charging.

When the battery is low electricity, MID will appear prompted window, at this time, charge it timely.

Use Micro SD card

After connecting the player and PC, you will find two removable disks, the front one is the built-in-memory disk, the other one is Micro SD card disk. If there is no card plugged in, the second disk cannot be opened. The player supports up to 64GB Micro SD card expansion.

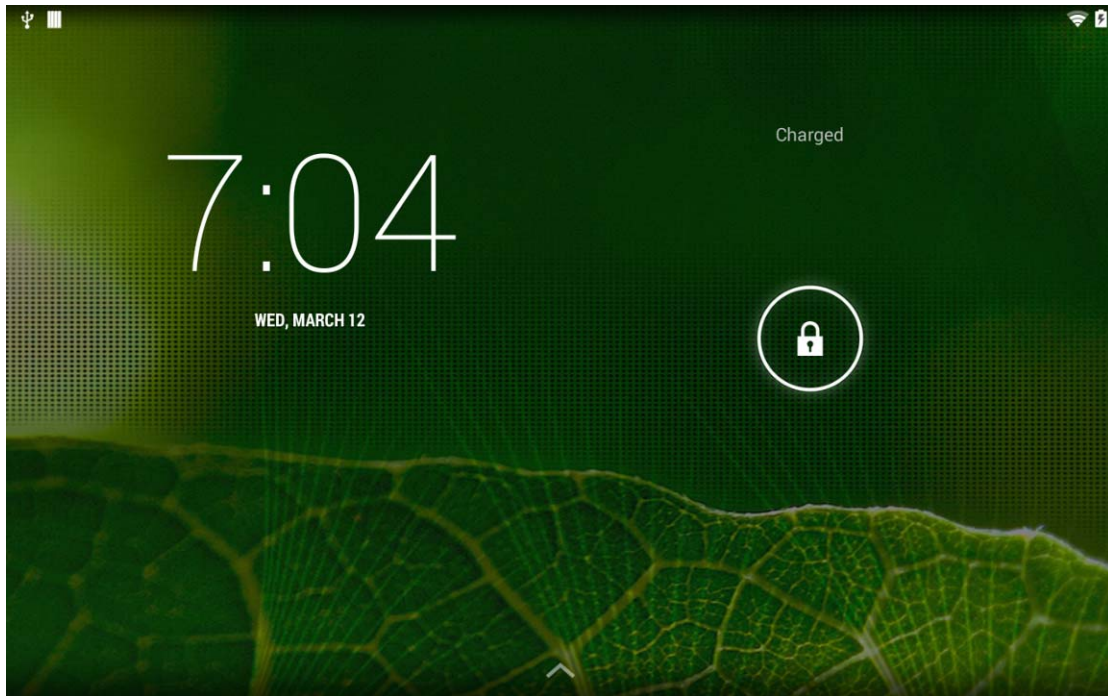
Plug-in: face the front side (the side with prints) Micro SD card upwards (the direction in which the machine's display screen faces) and connect it with the machine by plugging it with slight force into the card slot of the machine. Now the machine can play the files in the card.

Plug-out: push Micro SD card inwards slightly, it will spring back for certain length, and then take it out.

Basic Function

Main screen

The default is lock; drag the lock icon to unlock according to indication.



Switch to other main screen: slide the screen leftward/rightward fast, it supports five main screens altogether.

Switch to the first main screen: click the HOME icon on the status bar.

Main menu



Click the icon under the main screen, and the main menu popped up. All the applications listed on the main menu, you can drag the screen leftward or rightward to check.

Open or switch the applications

Select a program, click its icon to open the application. Click the HOME icon to return to the main screen.

User defined screen (main screen manage)

Long press a certain application icon, it can realize the main screen function of adding shortcut to it.



Zoom in or zoom out

When you view the pictures、webpage、emails or maps, zoom in or zoom out the frame by the gesture is supported.

Watch the MID horizontal or vertical

MID supports to watch the screen horizontal or vertical when you turn it. And the contents will be changed, while turning, to adapt the display screen.


Setting

Press icon  in the main interface and then enter “setting” application , the applications is consisted by wireless and networks、device、personal、accounts and system.


Wireless and networks

Include WI-FI、Ethernet、data usage、VPN、Portable hotspot、Mobile network and etc.

1. The way to use Wi-Fi:

- (1) Join Wi-Fi network: Click “open”, MID detects the network within communication range for a while, then choosing a network, if it needs, inputting password.
- (2) After MID connects to some Wi-Fi network, the right side of screen status bar signal  will display intensity, the more the cell is, the stronger the signal is.
- (3) Once joining a Wi-Fi network manually, when the network is within communication range, MID will join this network automatically.
- (4) If there are multiple networks used before are within communication range, then MID will join the last used network.
- (5) click “OFF” to turn off the Wi-Fi.

Reminder:

- (1) Click the icon  upper right side, choose “scan” and it will scan Wi-Fi automatically.
- (2) Choose “Advanced” on the popped up menu, and you can set more, for example, keep the Wi-Fi connected during sleep:
 - ① always: It means the Wi-Fi is still on during sleep.
 - ② only when plugged in: It means only for charging state during sleep, the Wi-Fi will keep on, otherwise it will shutdown automatically.
 - ③ never: It means during sleep, Wi-Fi will shutdown automatically.

【Note】: If you need the Wi-Fi keep working during sleep, please select “Never”

2. Traffic Usage Information

Display network traffic information and check out the flow of the applications used.

3. More

Set “Airplane Mode”、 “VPN”、 “Portable hotspot” 、 “Mobile network” and etc.

If you need to surf the Internet by 3G, first you need to shutoff WI-FI and Ethernet (if it opened) , then plug the 3G dongle with SIM card to MID’s USB port. The MID will link network automatically, after linked, the 3G logo(as follow screenshot) will appear on system menu, all linked process may last 1min.

Device

Include sound、 display、 storage、 battery and applications.

1. Sound setting

Volume: set the volume of music、 video、 game and other medias. And also the volume of setting notifications、 alarm clock.

Touch sounds: Whether sending out prompt tone when you touch it.

Screen lock sound: Whether sending out prompt tone when you lock the screen.

2. Display setting

Brightness: set the brightness of screen.

Wallpaper: we can choose wallpaper from the live wallpaper、 picture library and normal wallpaper.

Sleep: Setting that if there is no operation in a span, (including 15s、 30s、 1min、 2min、 5min、 10min、 30min) , MID will sleep automatically, and the display backlight will be auto off to save battery.

Font size: setting displayed font size (small/normal/big/oversize).

Accelerometer calibration: if you find the accelerometer has some deviation, you can calibrate it from here.

3. Storage

Users can look for internal storage、 internal SD card、 capacity of external device storage resource and available space.

4. Battery

Showing the information about spare capacity of battery.

5. Applications

You can check and take operation in intrasystem applications.

(1) Downloaded: List the information of downloaded applications

(2)On SD card: List the storage apps information of SD card .

(3)Running: List the running apps information. Clicking some running program, you can

check its progress and service further.

(4)All: List all application information of android. Click a certain program, then you can check information of its version number、 storage space、 cache size、 access right and etc.

Personal

1. Location services

Allowing apps use data from sources such as Wi-Fi and mobile networks to determine your approximate location, system will collect these anonymous location data and send to Google.

2. Security

Include screen security、 password、 device administrators and credential storage.

(1)Screen security:

- ①screen lock: Choose the unlock mode when screen lock.
- ②owner information: Set the owner information which displayed when the screen lock.
- ③passwords: Whether display the characters when inputting password.

(2)Device administration:

- ①Device administrator: View or deactivate device administrators.
- ②Unknown sources: Whether this option setting permits installing the applications which don't purchase from Android market.

(3)Credential storage:

- ①Trusted credentials: Display confidential CA certification.
- ②Install from SD card: Install certification from SD card.
- ③Clear evidence: Delete all certifications.

3. Language and input

- (1)Language: Choose the language which screen displayed.
- (2)Spelling checker: Input characters whether open correction.
- (3)Personal dictionary: Click the "ADD" button on the upper right side of screen; you can add vocabularies to create your own dictionary.
- (4)Keyboard and input: this option list the input installed in MID, you can do some related settings to each input.

4. Backup and reset

(1) Backup and restore

- ①Backup my data: Back up app data, Wi-Fi passwords, and other settings to Google servers.
 - ②Backup account: Back up to debug-only private cache.
 - ③Automatic restore: When reinstalling an app, restore backed up settings and data.
-

(2) Personal data:

Factory data reset: Erase all data partition; clear all user data in tablet.

Accounts

Manage accounts and synchronize information. Clicking “ADD an ACCOUNT” on the upper right side of screen, you can add Google account、company account、or email account.

System

1. Date and time

Users can acquire date and time automatically or manually.

2. Accessibility

(1) Large font: Select whether need to enlarge font

(2) Autorotation screen: when rotate the MID, whether the image rotate at the same time to adapt watching.

(3) Running mode: there are three options, including “performance balanced”、 “power saving prior” and “performance prior”.

①performance balanced: MID will adjust power consumption and performance to make both of that balance. Suggest you to use this option.

②power saving prior: The power consumption of MID is relatively small, so it saves power, but it will lead some scene, which power consumption is large, can not use normally. Not suggest users to use.

③performance prior: If you choose this option, the performance of MID will be the best, but because of the large power consumption, the power will be consume easily.

【Note】: When you running some applications or games, in order to display effectively , rotating may be forbidden.

3. Printing


With cloud print to a wireless printer can print over the network to securely send files.

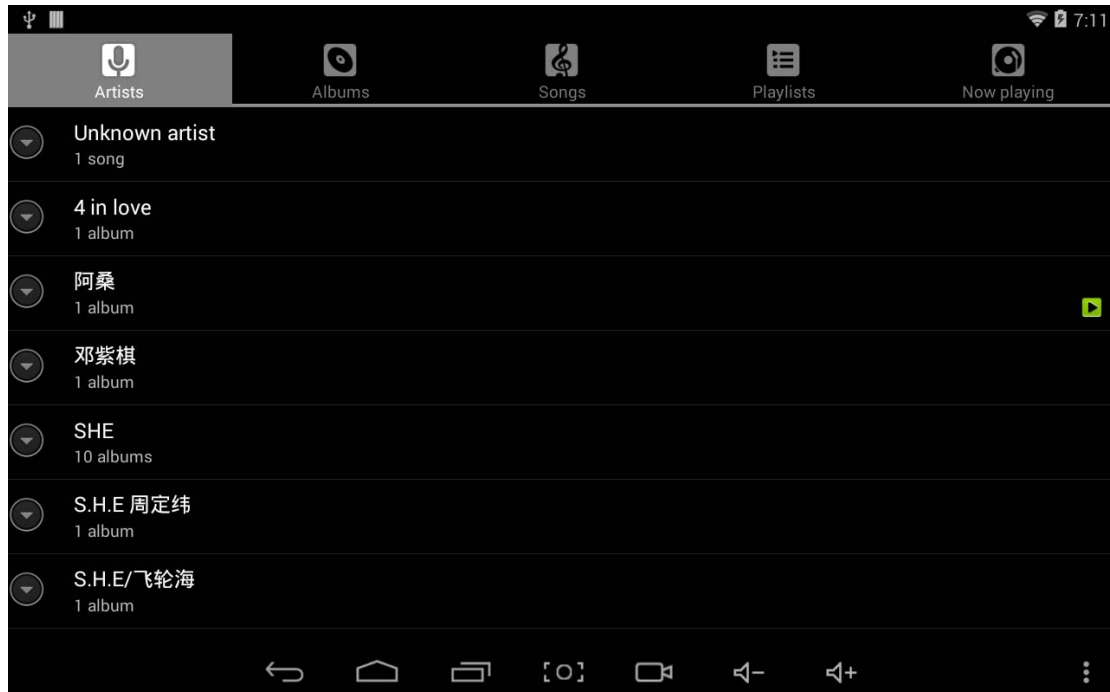
4. About tablet

On this option, you can check status of MID、 legal information 、 MID model number、 Android version, kernel version and build number.



Music



1. Click  to enter the following music library, all the music file listed separately on the basis of “Artists”, “Albums”, “Songs”, “play list” and “now playing”, click any sort to enter the list.



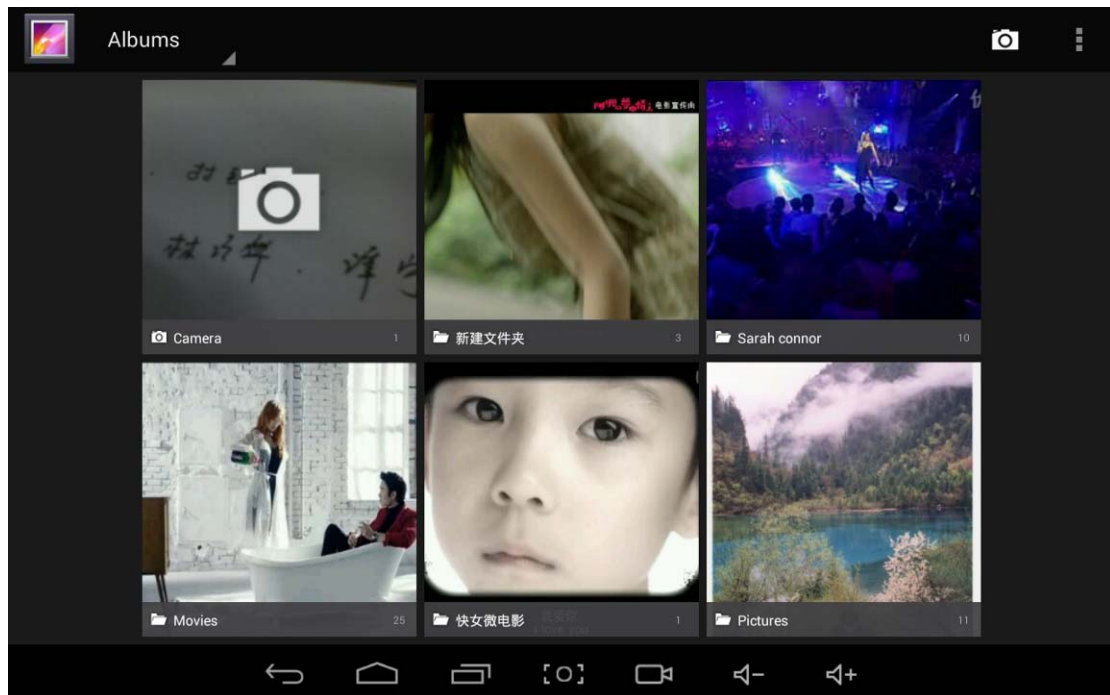
2. Long press any song or folder name, you can add them to play list, delete them and search them.

3. You can play the music when you use the other applications. Such as: while browse pictures/read txt/surf the internet, while listen to music. When it is playing music background, upper left side of status bar displays , pressing  and dragging downward, click the music and back to music playing interface.


Video&Picture

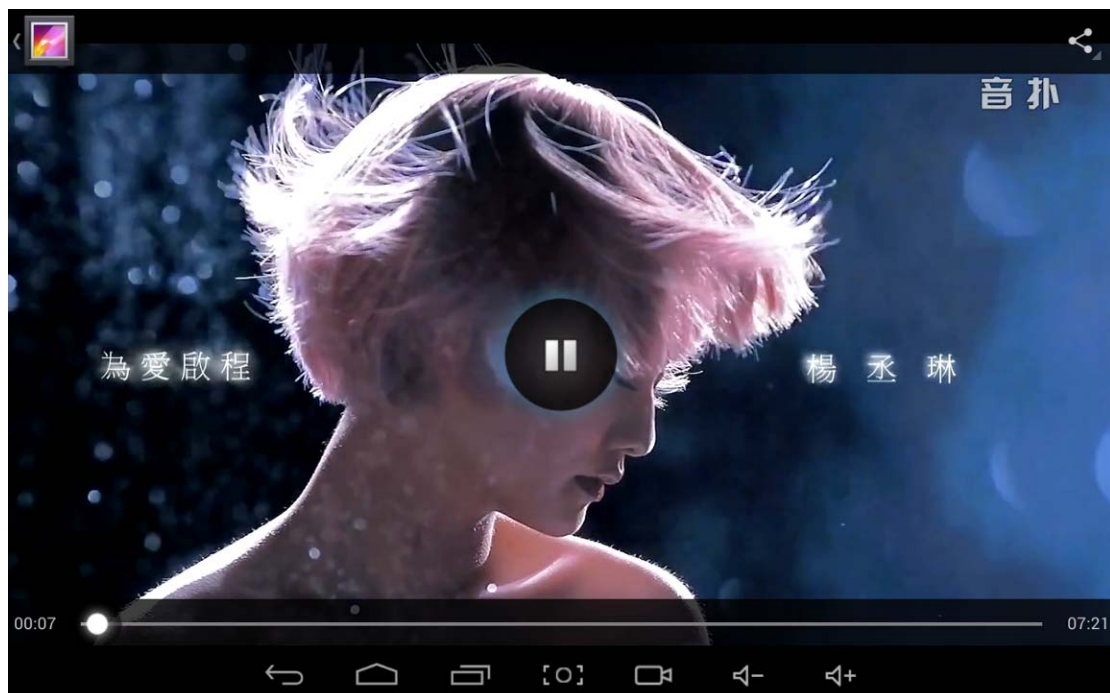


Click the picture library , entering:



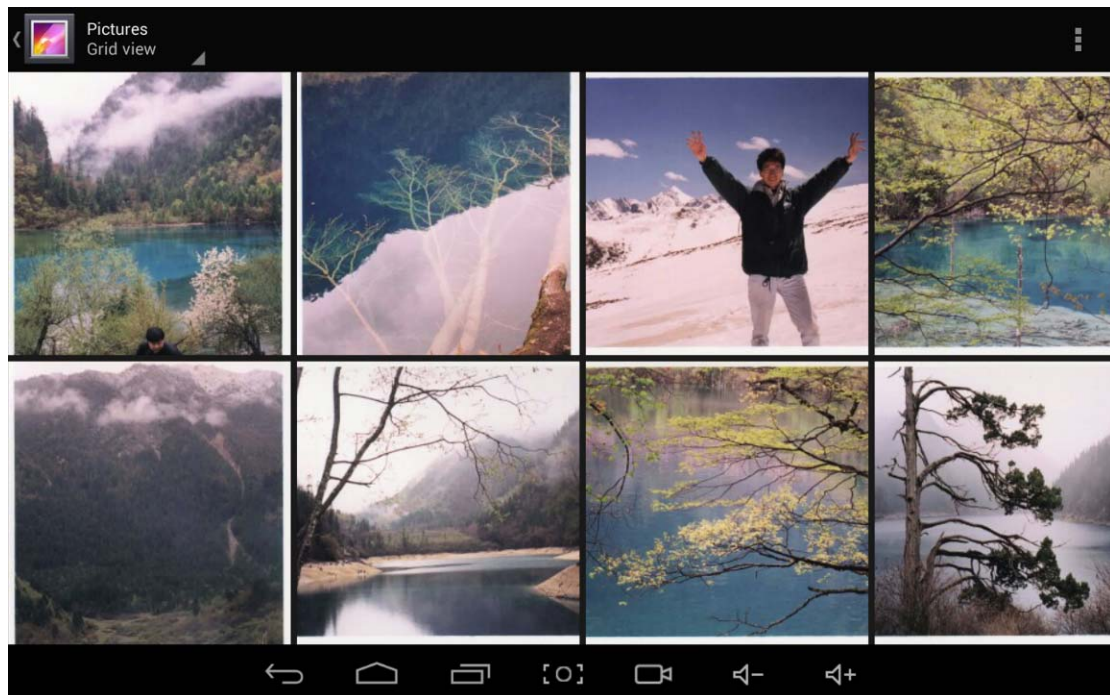
Video play


Click video folder, and wait a minute. After analyzing, click  to start play, displaying as follows:

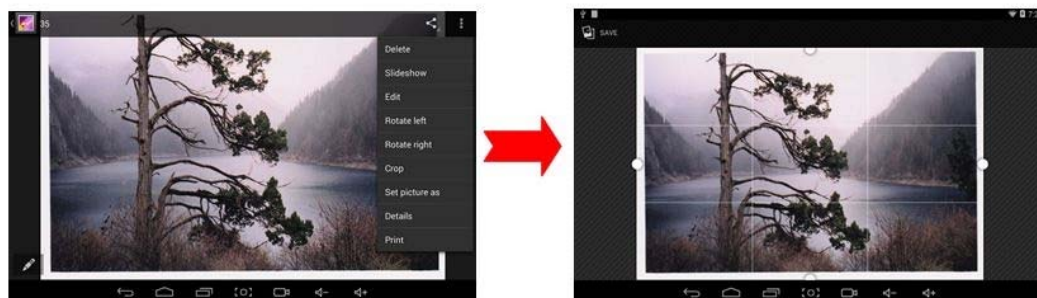


Picture play

Choose picture folder, shown as the following screenshot:




Click the upper right side icon , you can choose operation of playing slideshow, editing, rotating left, rotating right, cropping and etc. Choose “crop”, you can cut the picture. After selecting the crop region, click the “OK” button on the upper left side.



Owl player

Owl player is a featured video player, and it supplies a brand new window play mode—playback simultaneous of multi-window.

Click the icon , enter the owl player.

There are two modes in the interface: list and matrix, the picture on the left is matrix mode, and you can press  to change the interface you like. List mode is on the right:



Video playback interface:



Users can modify the window's size automatically. In the full screen mode, you can press



to switch to the window mode. In the case of no progress bar on interface, long press the lower right side of the playing window, you can modify window's size on your own willing, you can open several windows to play at the same time:




Click the upper right side icon :

Selecting “setting” on popped up menu, you can enter setting interface to set all options:

- (1) Browser: Setting media browser attributes, including sort order and progress bar.
- (2) Player: Setting player behavior and controller layout, including floating play、picture-in-picture、display and other.
- (3) Subtitle: Setting subtitle attributes, including text size and text color.

Online




Open the browser , enter webpage. Before surfing the Internet, ensuring your MID has been linked the Wi-Fi、3G or Ethernet.

Webpage browser interface with IPad mode, such as visit sina:




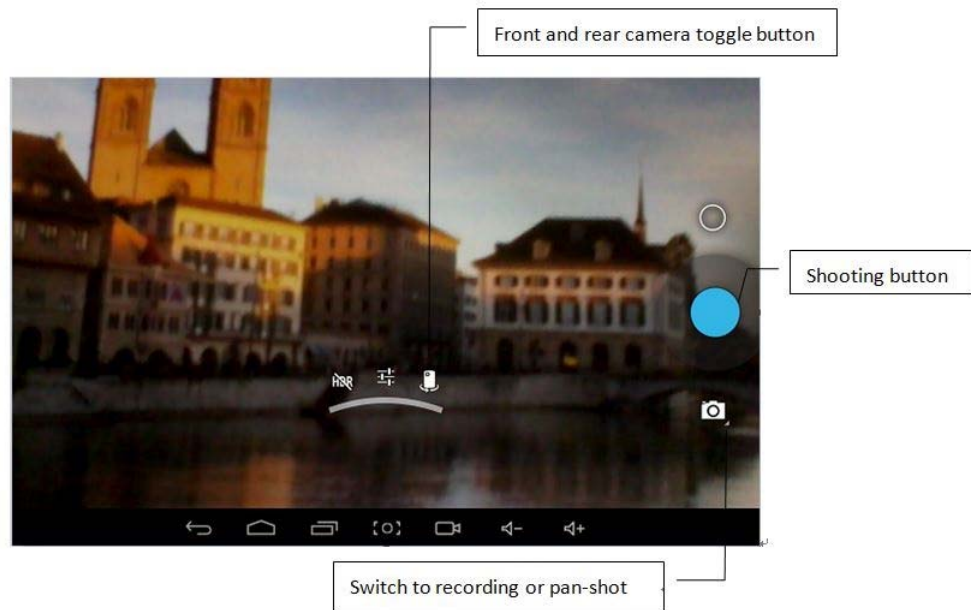
Webpage browser is divided into three parts, including desktop、iPad and android, if you want to visit the webpage of PC (most contents of web give priority to flash), then you need to modify the USER AGENT settings, methods as following:

- (1) Click the button  on the upper right side of web, choosing “setting” on the last option of popped up menu:
- (2) Selecting “Browser mode” and you can choose desktop:
- (3)Then come back to web playing interface and refresh:

Camera



click , you can enter the DC application:



select pan-shot, click photograph key, move the lens leftward or rightward slowly to take photos, slide to the left side and you can see the pictures or videos you have shot :

Pan-shot's effect picture:

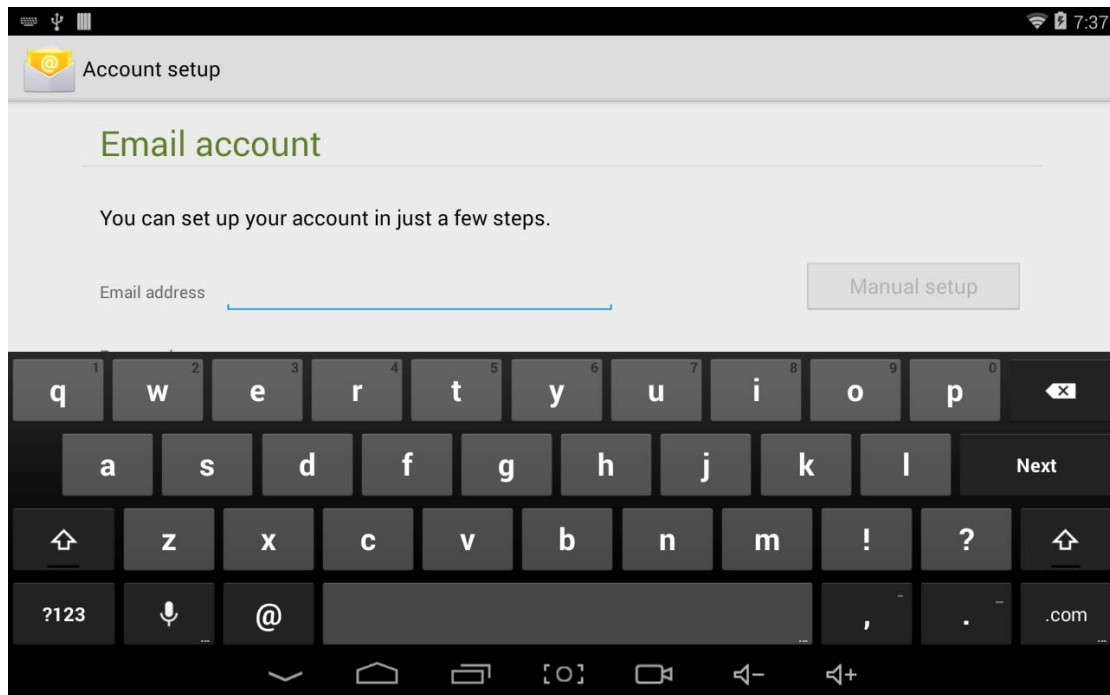


Email

You can send or receive emails in MID.



Click Email, and login your account and password, then you can send emails.



Play store

You can download applications from play store and then install them on your MID.



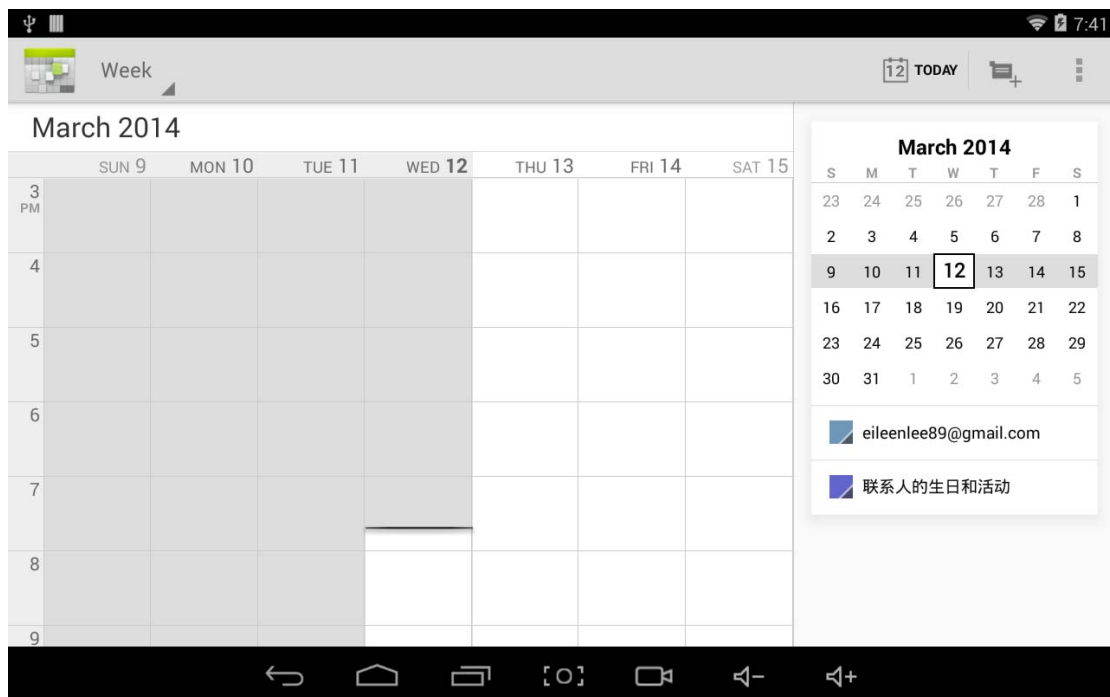
(1) When the WI-FI is linked, click play store icon, enter your Google account and password, then you can enter the main interface of play store.

(2) There are five sections on Play Store for users to download, they are Categories、Featured、Top Free、Top Grossing and Trend. Open to use after installing:

Calendar




Click calendar, enter Calendar:



(1) You can set calendar remind tone and other related settings via <setting-general setting>

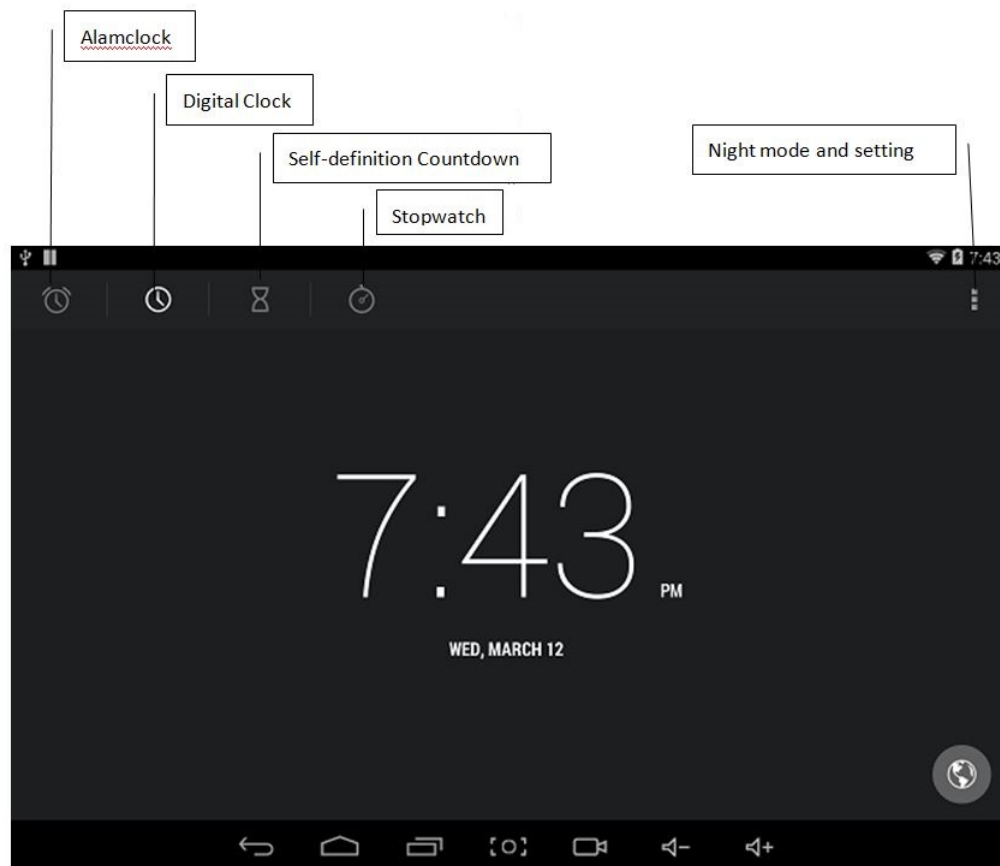


(2) Add agenda: press  in the interface, the option you can set including: event name、time、location、description、repeat time and remind. You can press “done” to save schedule.

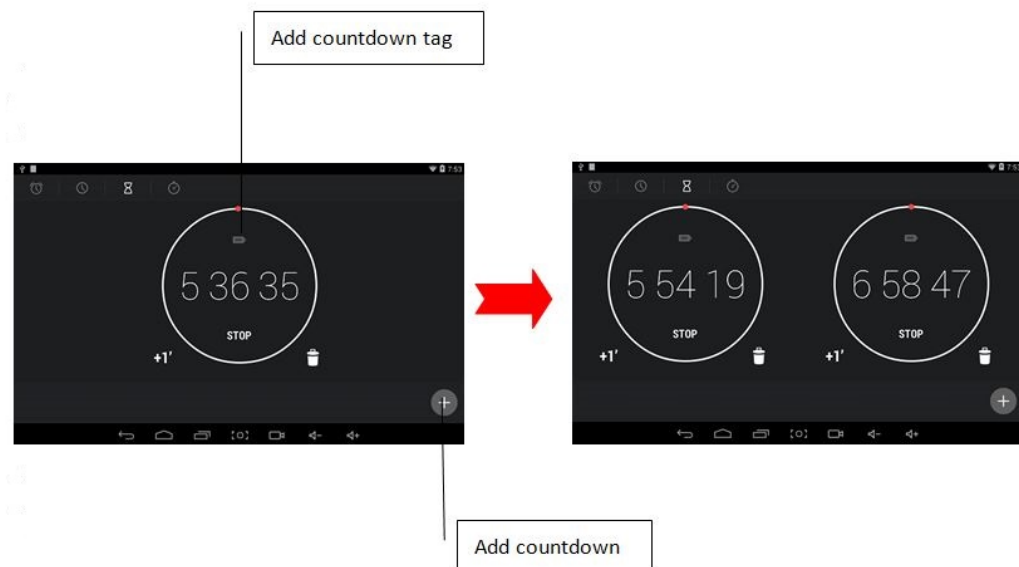
Clock



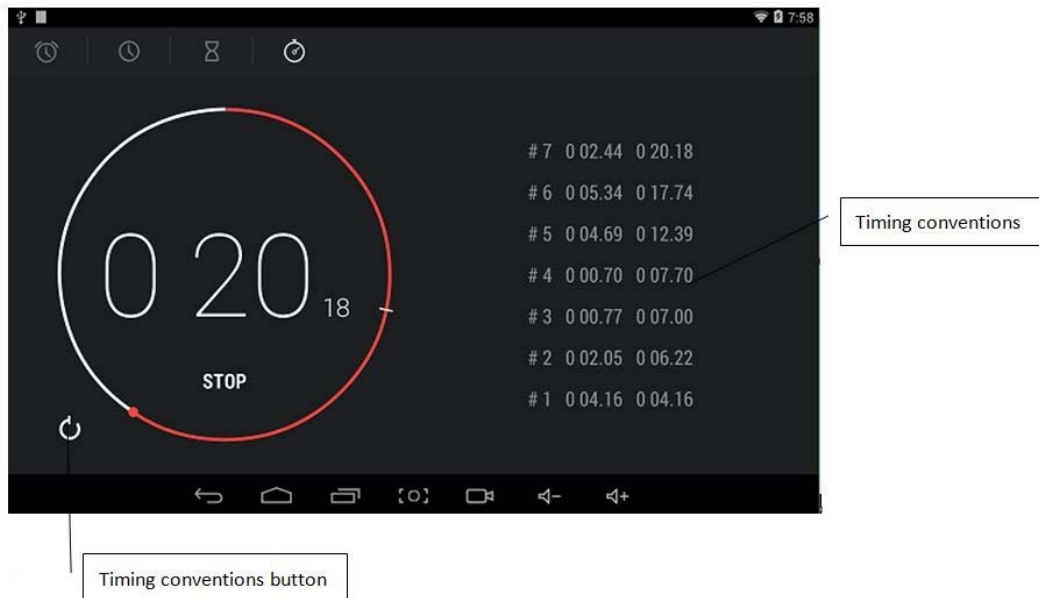
Click clock , clock interface will appear:



- (1) Self-definition countdown: You can enter the time to timing, the circular dial plate has "add one minute" and "cancel" buttons, and you can also set several tagged countdown timers. Otherwise, when countdown timers are permitted back end, the notice board will has presentation.




(2) Stopwatch: Timing conventions will display on the right hand of stopwatch, there is red edge effect in circle when timing.



(3) Alarm clock: Add or delete clock, setting the tag of clock or alarm; enter the time you want when add a new clock, which is convenient for customers. For example, if you want to set a clock is 2:30 pm, just enter 2,3,0,pm, then you have set the time completely.



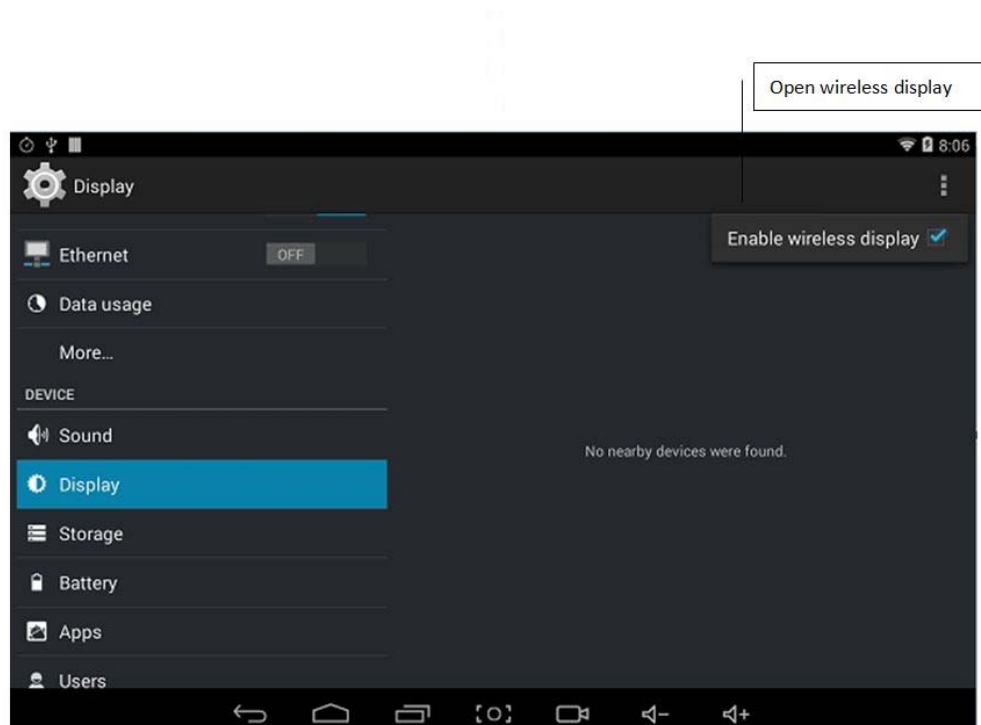
(4) Night mode and setting: Press  button in the lower right side of the clock interface and you can enter the night mode or settings.

Miracast

This function can let the MID wireless transfer to TV、LCD or other display devices. Miracast technology allows users enjoy the photos they shoot on TV, real-time share the content of MID through projector, or watch the content which is push by other support Miracast technology devices. Miracast is connected via Wi-Fi CERTIFIED Wi-Fi Direct™, which doesn't need to access any Wi-Fi networks----Miracast certificates the device internal has connection function.

Detail of using Miracast:

- (1) Device: MID、 sender devices which support Miracast (such as PTV3000、 millet box、 Ipush and so on)
- (2) Hardware connection: Select HDMI output on TV, input the HDMI joint of PTV3000 into the behind joint of TV you like.
- (3) Operation:
 - ① Open Wi-Fi and wireless display, as follow:



- ② Press "search for displays" and connect to the device which has been searched.
 - ③ After connected successfully, the picture on TV will keep consistent with that on MID, your operation on MID will display on TV. The status bar of MID will show it is wireless display connection.

FCC Warning:

This equipment has been tested and found to comply with the limits for a Class B digital device, pursuant to part 15 of the FCC Rules. These limits are designed to provide reasonable protection against harmful interference in a residential installation. This equipment generates, uses and can radiate radio frequency energy and, if not installed and used in accordance with the instructions, may cause harmful interference to radio communications. However, there is no guarantee that interference will not occur in a particular installation. If this equipment does cause harmful interference to radio or television reception, which can be determined by turning the equipment off and on, the user is encouraged to try to correct the interference by one or more of the following measures:

- Reorient or relocate the receiving antenna.
- Increase the separation between the equipment and receiver.
- Connect the equipment into an outlet on a circuit different from that to which the receiver is connected.
- Consult the dealer or an experienced radio/TV technician for help.

Caution: Any changes or modifications to this device not explicitly approved by manufacturer could void your authority to operate this equipment.

This device complies with part 15 of the FCC Rules. Operation is subject to the following two conditions: (1) This device may not cause harmful interference, and (2) this device must accept any interference received, including interference that may cause undesired operation.

This equipment complies with FCC RF radiation exposure limits set forth for an uncontrolled environment. This device and its antenna must not be located or operating in conjunction with any other antenna or transmitter.