

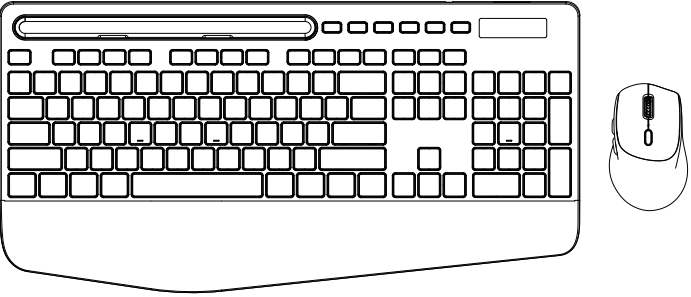
尺寸：105x148mm

材质：100g书纸

工艺：双面四色印刷 折页

Wireless Keyboard and Mouse

User Manual



Email: truequeservice@outlook.com

Product Specification

Keyboard parameters:

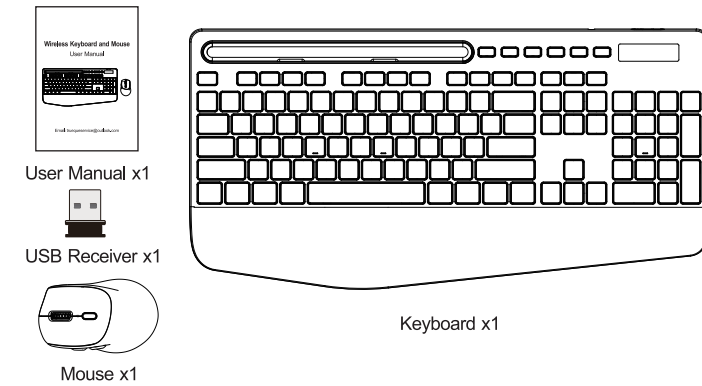
Product Size	430x216x36mm
Product Weight	688g±20g
Connectivity	2.4G Wireless Connection
Power	2 AAA battery
Operating Voltage	3V
Connection Distance	8-10M
Power Saving	Enter sleep mode after 10min without action
Working Distance	Within 10 meters
Key Life	10 Millions Strokes

Mouse parameters:

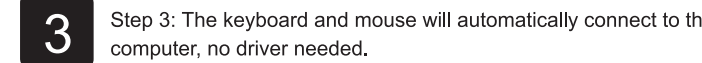
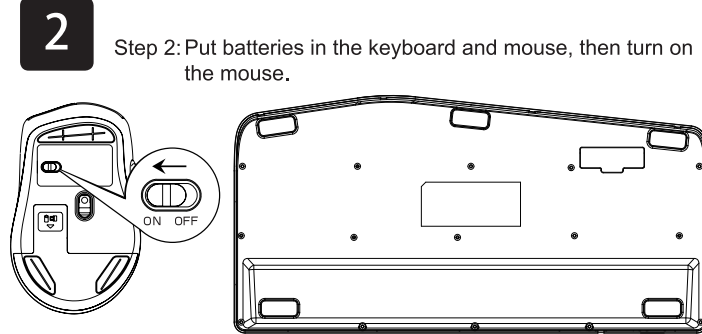
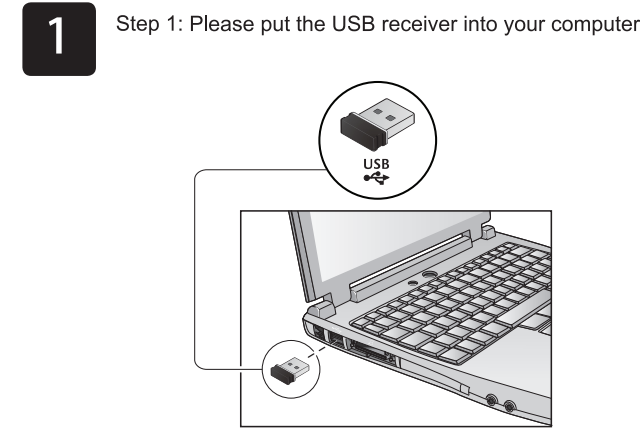
Mouse DPI	800-1200-1600
Power	1 AA battery
Connection Distance	8-10M
Power Saving	Enter sleep mode after 8min without action

Compatible Systems: Windows XP, Windows 7/8/10/11, Mac

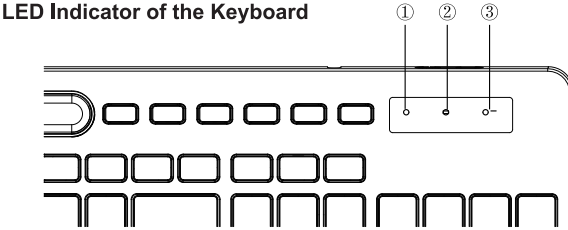
You will receive



How to set up



Indicator Light



- ① **Num Lock**
The Num Lock indicator will turn red when Num Lock is activated.
- ② **Caps Lock**
The Caps Lock indicator will turn red when Caps Lock is activated.
- ③ **Low battery warning**
The indicator light will flash slowly when the battery is almost empty.

Multimedia button description

FN + F1	Media	FN + F10	Mail
FN + F2	Volume-	FN + F11	My Computer
FN + F3	Volume+	FN + F12	Favorites
FN + F4	Mute		Previous page of website
FN + F5	Previous Track		Next page of website
FN + F6	Next Track		Refresh
FN + F7	Play/Pause		Search
FN + F8	CD stop		Stop
FN + F9	Homepage		Calculator

FAQ

- Q1: The keyboard and mouse can not be connected.
- A1: Please switch on the keyboard, press **Esc** + **K**, the LED indicator light will flash quickly.
Plug the 2.4GHz USB receiver into the computer. Within 10 seconds, put the keyboard at 10 cm near the receiver for pairing. When the light turns off, the keyboard pairing is successful.
- Q2: What should I do if the keyboard gets delayed or stuck?
- A2: Please check there is no 2.4GHz device (e.g. router) nearby to interfere with the connection.
Please check there is no full metal case that may block the signal.
- Q3: Where is my USB receiver?
- A3: The USB receiver is placed on top of the keyboard inside the package, please look for it carefully.
- Please contact us to get the free replacement if you have lost the USB receiver.

Note

The multimedia keys are for Win 8 and Win 10, for other systems, there may be no function for some combined keys.

This equipment has been tested and found to comply with the limits for a Class B digital device, pursuant to part 15 of the FCC Rules. These limits are designed to provide reasonable protection against harmful interference in a residential installation. This equipment generates uses and can radiate radio frequency energy and, if not installed and used in accordance with the instructions, may cause harmful interference to radio communications. However, there is no guarantee that interference will not occur in a particular installation. If this equipment does cause harmful interference to radio or television reception, which can be determined by turning the equipment off and on, the user is encouraged to try to correct the interference by one or more of the following measures:

- Reorient or relocate the receiving antenna.
- Increase the separation between the equipment and receiver.
- Connect the equipment into an outlet on a circuit different from that to which the receiver is connected.
- Consult the dealer or an experienced radio/TV technician for help

Changes or modifications not expressly approved by the party responsible for compliance could void the user's authority to operate the equipment.

This device complies with Part 15 of the FCC Rules. Operation is subject to the following two conditions:

- (1) This device may not cause harmful interference
- (2) This device must accept any interference received, including interference that may cause undesired operation.