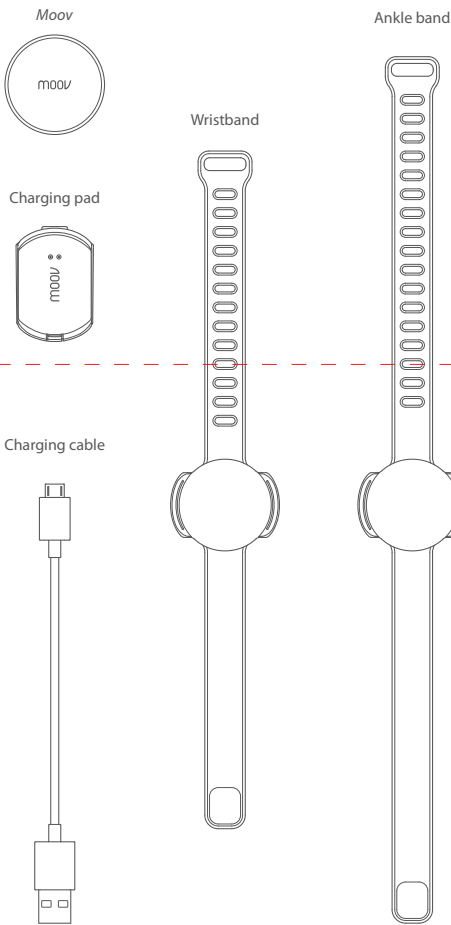
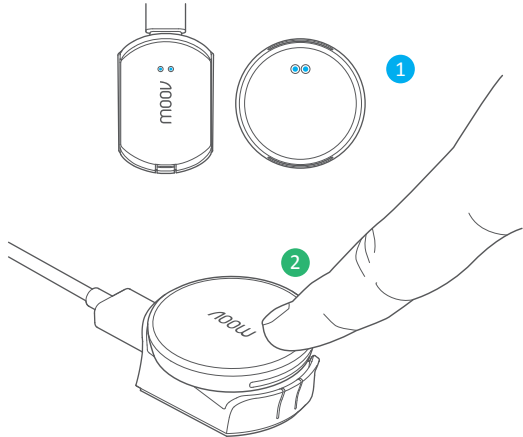


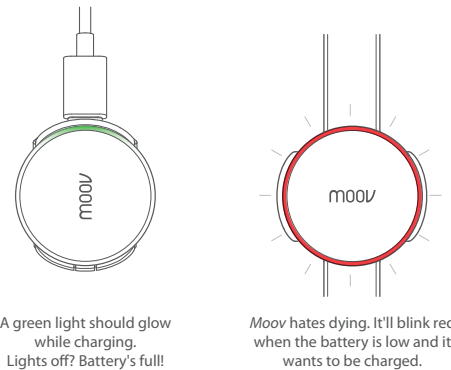
Here’s what’s in the box:



Charging *moov*

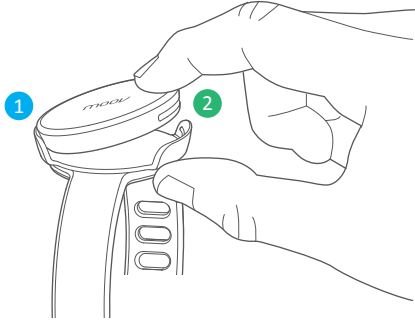


- 1 Line up the charging pad's metal pins with *moov*'s pinholes.
- 2 Snap *moov* into place.



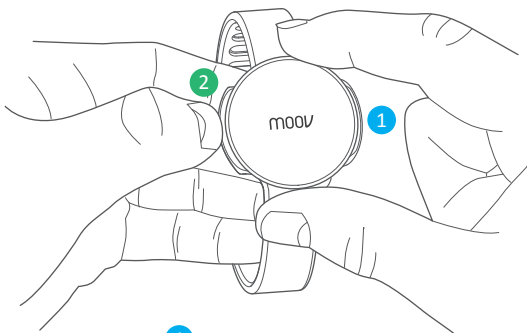
Moov hates dying. It'll blink red when the battery is low and it wants to be charged.

Securing *moov* in its mount



- 1 Tilt *moov* into the mount, matching the grooves on the side.
- 2 Snap *moov* into place with a satisfying click.

Detaching *moov*



- 1 Hold *moov* firmly— We've locked it in tight so it doesn't go flying off on its own mid-workout.
- 2 Use your fingernail to get between *moov* and its mount. No need to be timid, *moov* is sturdy.

WWW.MOOV.CC/START
moov says hello!

This device complies with Part 15 of the FCC Rules. Operation is subject to the following two conditions: (1) this device may not cause harmful interference, and (2) this device must accept any interference received, including interference that may cause undesired operation.

Changes or modifications not expressly approved by the party responsible for compliance could void the user's authority to operate the equipment.

This equipment has been tested and found to comply with the limits for a Class B digital device, pursuant to Part 15 of the FCC Rules. These limits are designed to provide reasonable protection against harmful interference in a residential installation. This equipment generates, uses and can radiate radio frequency energy and, if not installed and used in accordance with the instructions, may cause harmful interference to radio communications. However, there is no guarantee that interference will not occur in a particular installation.

If this equipment does cause harmful interference to radio or television reception, which can be determined by turning the equipment off and on, the user is encouraged to try to correct the interference by one or more of the following measures:

- Reorient or relocate the receiving antenna.
- Increase the separation between the equipment and receiver.
- Connect the equipment into an outlet on a circuit different from that to which the receiver is connected.
- Consult the dealer or an experienced radio/TV technician for help.

This device complies with Industry Canada license-exempt RSS standard(s). Operation is subject to the following two conditions: (1) this device may not cause interference, and (2) this device must accept any interference, including interference that may cause undesired operation of the device.

Le présent appareil est conforme aux CNR d'Industrie Canada applicables aux appareils radio exempts de licence. L'exploitation est autorisée aux deux conditions suivantes : (1) l'appareil ne doit pas produire de brouillage, et (2) l'utilisateur de l'appareil doit accepter tout brouillage radioélectrique subi, même si le brouillage est susceptible d'en compromettre le fonctionnement.

This Class [B] digital apparatus complies with Canadian ICES-003.
Cet appareil numérique de la classe B est conforme à la norme NMB-003 du Canada.

Caution
Risk of explosion if battery is replaced by an incorrect type.
Dispose of used batteries according to the instructions.

Battery: 60mAh
Charging voltage: 5v



FCC ID: 2ACIE-M1507, IC: 12046A-M1507, Model: M1507
© 2014 Moov Inc.

Contact us
support@moov.cc