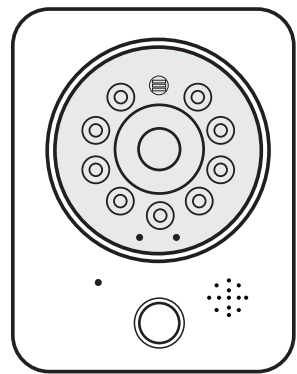


Baycom
K20H(K20,K20S,K20K)



Wi-Fi HD IP Camera

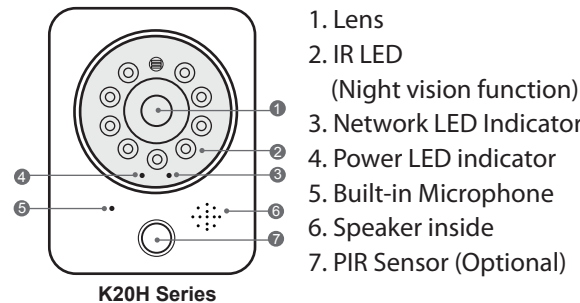
Quick Installation Guide

1. Package Contents

Camera / Mounting Bracket / AC Power Adapter / Mounting Screws / Quick Installation Guide

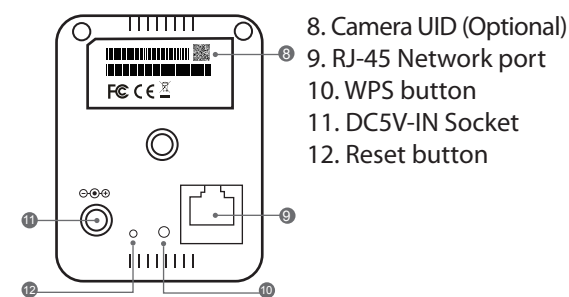
2. Physical Descriptions

Front View

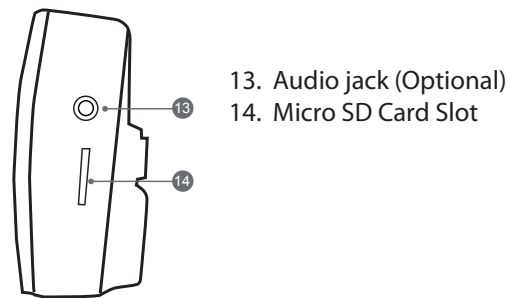


K20H Series

Back View



Side View



3. Network Requirements

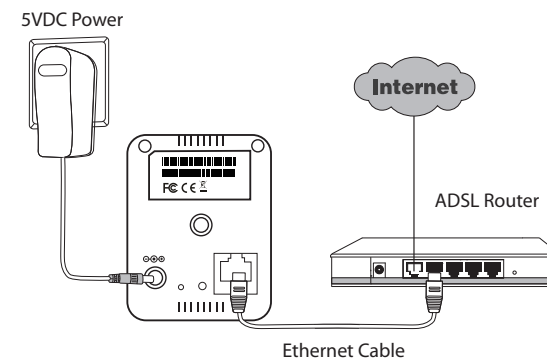
- An ADSL modem with Internet connection.
- A broadband router, preferably with Wi-Fi capability. Please make sure DHCP is enabled on your router.

4. Install the hardware and connect with PC

Before connect camera to the Internet, please check if your router has a WPS button, and then follow the WPS setup. If not (or unsure), please follow the wire setup.

A. Wired setup

- a. Connect a network cable to the network port, which is on the back of Camera and a LAN port of the router.
- b. Then plug the power adapter of Camera to power on the camera.

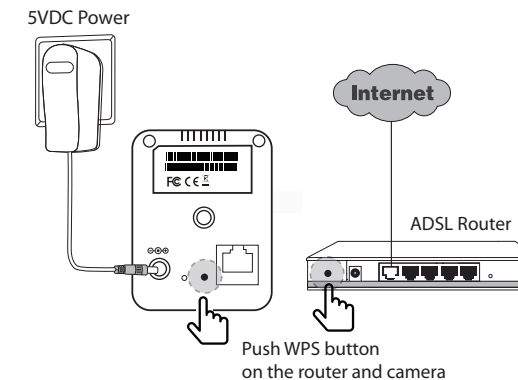


B. Wireless setup via WPS

Note: Please unplug the network cable for Camera WPS setup.

- a. Plug the power adapter and power on your Camera then wait for 40 seconds to boot the camera (operating system).

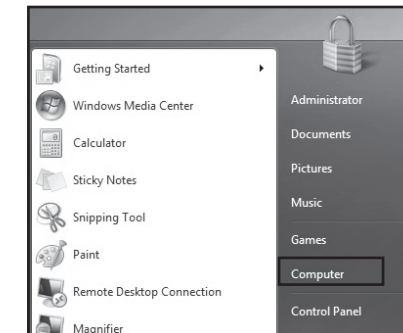
- b. Press the WPS button (on the lower back of Camera) for 4 seconds until its LED blinks. Then press the WPS button on your router and wait for the Wi-Fi connection to be established (within 10 to 120 seconds).



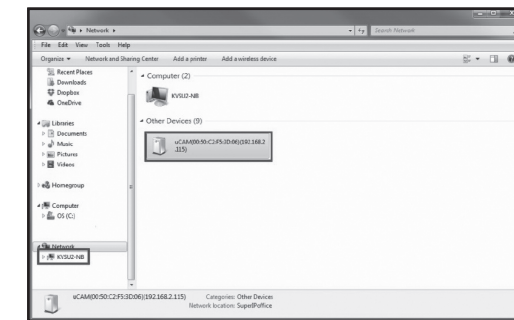
C. Viewing camera video image through I.E. Browser

- a. In order to successfully install the camera, make sure you have these followings:
 - DHCP is enabled on your Wi-Fi router.
 - Please link to the below hyperlink to download and Install the Plug-in file in your PC. (<http://www.ucamsee.com/webe/html/news/02.php?num=33&page=1&kind=8>)
 - Make sure your camera and PC in the same network segment.

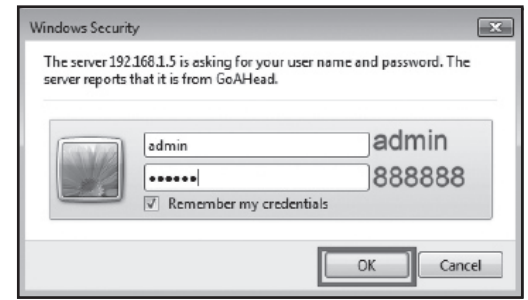
- b. Click Computer



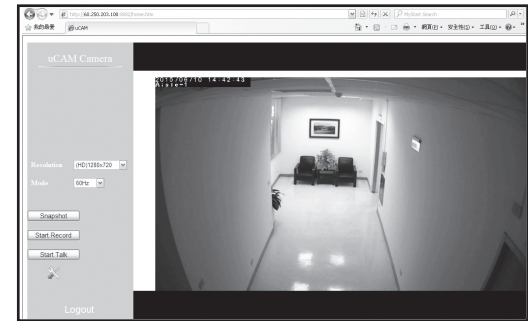
- c. Click network icon, then double click the UCAM (xx.xx.xx.xx.xx.xx)(xx.xx.xx.xx), Windows will automatically open the browser (please select IE browser).




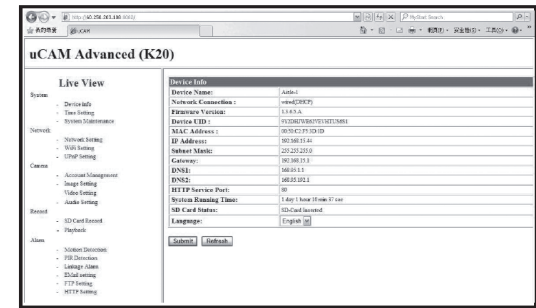
d. Enter your Username and Password to log-in to the IP camera. (Default is admin / 888888)



e. You will get the Live Video Image.



f. For further advanced setting, please click fix tool  to adjust the detail parameters.



5. IP Camera Connection via P2P (Optional):

a: Download APP “Smart-Cam” from Google Play / Apple Store or scan QR code to install it.



iOS



Android

b: Download “Barcode Scanner” to scan UID from Google Play or Apple Store.

- c: Open “Smart-cam” and “Click here to add camera” by scanning QR code on the back of Camera to get the UID.
- d: Enter Password (default 888888) then press OK to add your camera.
- e: Once you have seen the status of your Camera is Online and then you can and watch the live video right away.

6. Frequently Asked Questions

- A. How to move your Camera to a new environment :
 - Wired mode : Remove the power adapter of Camera & follow the **Wired setup** of step 2.
 - Wi-Fi mode : Remove the power adapter of Camera and follow the Wi-Fi setup of step 2.

B. If you are still having difficulty, you may attempt to perform a factory reset on your Camera. With the power on, press the RESET button on the back of your Camera for 10 seconds and then proceed to setup your camera from the beginning again.

C. Camera can support up to 32GB (FAT32) Micro SD Card for recording storage.

D. If still can’t get the live video image **via IE browser**. How can I do?
Please remove **Plug-in file** then download and install it again.

E. The maximum recording time of 32GB Micro SD Card is 71 hours (about 2.9 days) with the highest resolution.

SD card Recording Capacity		SD Card Size (Gbytes)			
		4 GB	8 GB	16 GB	32 GB
		Recording capacity (Hour)			
Video Quality	Max	8.3	17	33	66
	High	11	22	44	88
	Medium	17.1	34	68	137
	Min	28.4	57	114	227
	Low	28.4	57	114	227
(Deviation Value: +- 5%)					

F. LED indicator & Speaker definition:

No.	Cata	Power LED Orange color	Network LED Green color	Speaker
1	Camera Initialize	ON	---	---
2	Network Connection		ON	---
3	WPS Enable		Flash	---
4	AP Mode		Slow Flash	---
5	Reset to Default		---	3 Beeps Sound
6	Start to upgrade new Firmware		---	1 Beeps Sound
7	Firmware upgrade on-going		Fast Flash	---

G. Please power off your camera and pull the adapter before you insert the SD card to make sure the recording video files can well storage.

FCC Compliance and Advisory Statement

This equipment has been tested and found to comply with the limits for a Class B digital device, pursuant to part 15 of the FCC rules. These limits are designed to provide reasonable protection against harmful interference in a residential installation. This equipment generates, uses and can radiate radio frequency energy and, if not installed and used in accordance with the instructions, may cause harmful interference to radio communications. However, there is no guarantee that interference will not occur in a particular installation. If this equipment does cause harmful interference to radio or television reception, which can be determined by turning the equipment off and on, the user is encouraged to try to correct the interference by one or more of the following measures:

- Reorient or relocate the receiving antenna.
- Increase the separation between the equipment and receiver.
- Connect the equipment into an outlet on a circuit different from that to which the receiver is connected.
- Consult the dealer or an experienced radion/TV technician for help.

Any changes or modifications not expressly approved by the party responsible for compliance could void the user's authority to operate this equipment.

FCC RF Radiation Exposure Statement:

1. This Transmitter must not be co-located or operating in conjunction with any other antenna or transmitter.
2. This equipment complies with FCC RF radiation exposure limits set forth for an uncontrolled environment. This equipment should be installed and operated with a minimum distance of 20 centimeters between the radiator and your body.

Wall Mount Guidance

1:1

