

BAYCOM K10

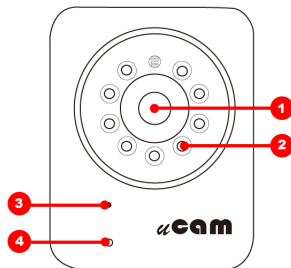
720P HD Day & Night Plug & Play Camera Quick Installation Guide

Wireless Network IP Camera
K10H(K10/K10S/K10K)

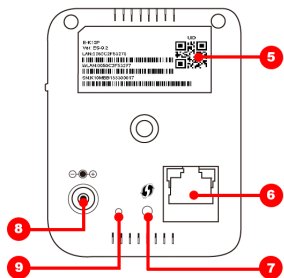
1. Package Contents

Camera / Mounting Bracket / AC Power Adapter
/ Mounting Screws / Quick Installation Guide
/ Warranty Card/ CD

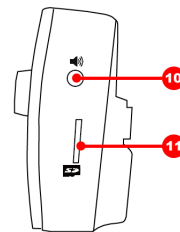
2. Physical Descriptions



1. Lens
2. IR LED
(Night vision function)
3. Built-in Microphone
4. Power / WPS / Reset
LED indicator,
Network LED Indicator



5. UID
6. RJ-45 Network port
7. WPS button
8. DC5V-IN Socket
9. Reset button



10. Audio jack (to speaker)
11. Micro SD Card Slot

3. Network Requirements

- An ADSL modem with Internet connection.
- A broadband router, preferably with Wi-Fi capability. Please make sure DHCP is enabled on your router.
- Android or iOS smartphones ; 3G/WiFi network connection preferred.

4. Installation

Step 1 : Install APP "P2PCamLive" to your mobile device.



- For iPhone / iPad,
please download P2PCam_Live from
Apple Store and install it.



- For Android Smartphone / Tablet,
please download P2PCamLive from
Play Store and install it.

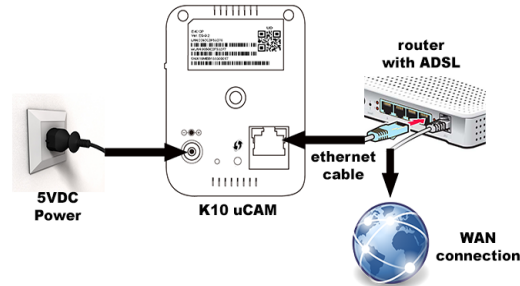


Step 2 : Connect to Internet

Please check if your router has a WPS button, then follow the **WPS setup**.
If not (or unsure), please follow the **Wired setup**.

Wired setup

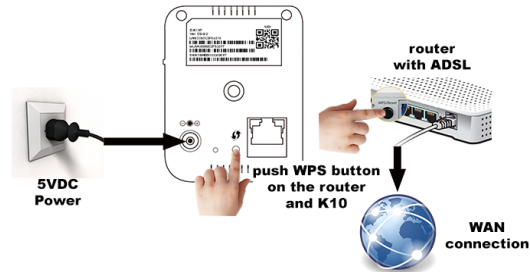
1. Connect a network cable to the network port, which is on the back of and a LAN port of the router.
2. Then plug the power adapter of to power on the camera.



WPS setup

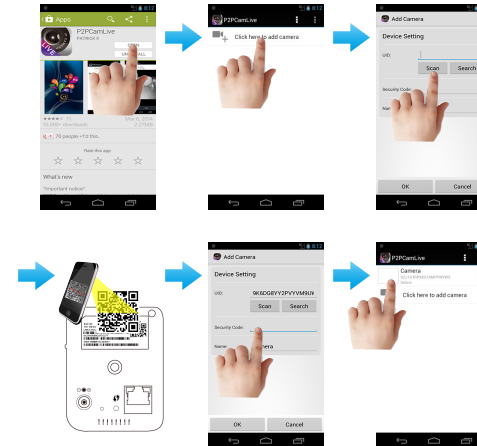
Note : Please unplug the network cable for WPS setup.

1. Plug the power adapter and power on your then wait for 40 seconds to boot the camera (operating system).
2. Press the WPS button (on the lower back of for 4 seconds until its LED blinks. Then press the WPS button on your router and wait for the Wi-Fi connection to be established (within 10 to 120 seconds).



Step 3 : Add camera

1. Download APP "P2PCamLive" from Google Play for Android devices or from Apple Store for iOS devices.
2. Open P2PCamLive and "Click here to add camera", by scan QR code on the back of to get the UID (Unique ID) or you can enter it manually.
3. Enter Security Code (default 888888) then press OK to add your .
4. Once you have seen the status of your is Online and then you can click and watch the live video right away.



5. Frequently Asked Questions

1. How to move your uCAM to a new environment :
 - Wired mode : Remove the power adapter of and follow the **Wired setup** of step 2. - Wi-Fi mode : Remove the power adapter of uCAM and follow the Wi-Fi setup of step 2.
2. If you are still having difficulty, you may attempt to perform a factory reset on your . With the power on, press the RESET button on the back of your for 10 seconds and then proceed to setup your camera from the beginning again.
3. can support up to 32GB (FAT32) Micro SD Card for recording storage.
4. The maximum recording time of 32GB Micro SD Card is 71 hours (about 2.9 days) with the highest resolution.

SD card Recording Capacity		SD Card Size (Gbytes)			
		4 GB	8 GB	16 GB	32 GB
Video Quality	Max	8.3	17	33	66
	High	11	22	44	88
	Medium	17.1	34	68	137
	Min	28.4	57	114	227
	Low	28.4	57	114	227

(Deviation Value: + - 5%)

Federal Communication Commission Interference Statement

This equipment has been tested and found to comply with the limits for a Class B digital device, pursuant to Part 15 of the FCC Rules. These limits are designed to provide reasonable protection against harmful interference in a residential installation. This equipment generates, uses and can radiate radio frequency energy and, if not installed and used in accordance with the instructions, may cause harmful interference to radio communications. However, there is no guarantee that interference will not occur in a particular installation. If this equipment does cause harmful interference to radio or television reception, which can be determined by turning the equipment off and on, the user is encouraged to try to correct the interference by one of the following measures:

- Reorient or relocate the receiving antenna.
- Increase the separation between the equipment and receiver.
- Connect the equipment into an outlet on a circuit different from that to which the receiver is connected.
- Consult the dealer or an experienced radio/TV technician for help.

15.21

FCC Caution: Any changes or modifications not expressly approved by the party responsible for compliance could void the user's authority to operate this equipment.

15.19

This device complies with Part 15 of the FCC Rules. Operation is subject to the following two conditions: (1) This device may not cause harmful interference, and (2) this device must accept any interference received, including interference that may cause undesired operation.

FCC RF Radiation Exposure Statement:

1. This Transmitter must not be co-located or operating in conjunction with any other antenna or transmitter.
2. This equipment complies with FCC RF radiation exposure limits set forth for an uncontrolled environment. This equipment should be installed and operated with a minimum distance of 20 centimeters between the radiator and your body.