

5. Antenna Dimensions (unit: mm)

Document number	SLK-PNE-1614A-R-360III-B	Company: mm	Edition	Sign	Change description	DATE
			A1		New material	23-05-16

Green P1 substrate, thickness 25um
Yellow Covered with copper, thickness 35um
Purplish red black oil, thickness 25um

Detailed A 5/1

Red 2M80 adhesive, thickness 50um
Blue Release paper, thickness 100um

360±3

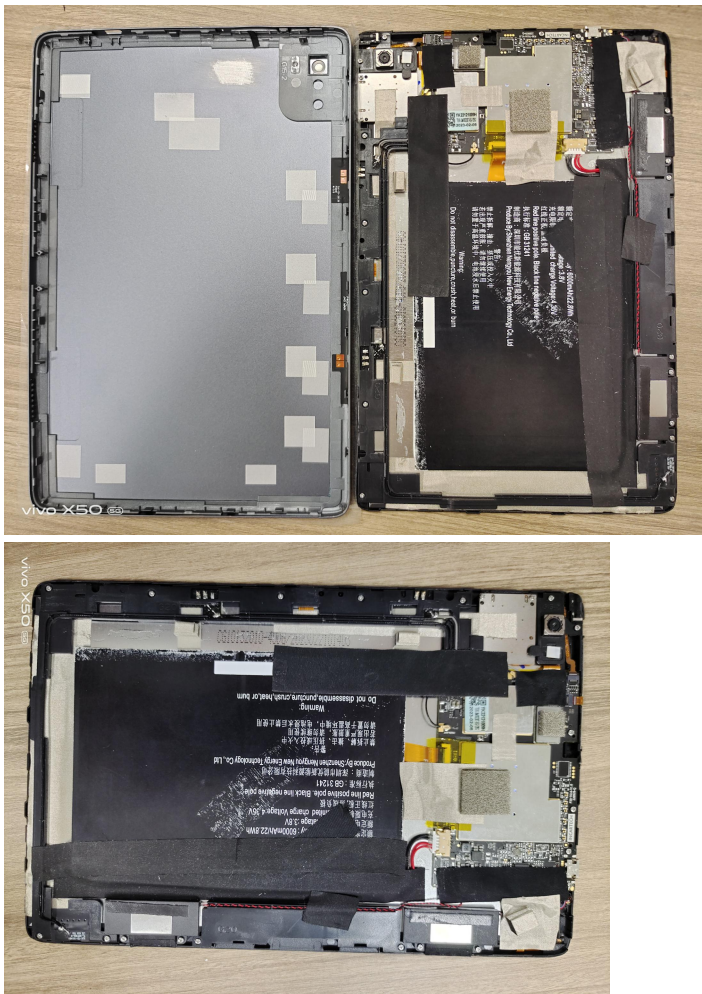
Black 0.81 wire, third generation terminal

Technical requirements:

1. FPC base material: Pi, the shaded part is copper foil, and black oil is on the front surface.
2. Back glue model: 3m300.
3. Copper exposed in red part; The surface shall be free of oil, impurities, burrs, etc.
4. Cut off the release paper by hand to avoid damaging the line.
5. Important dimensions shall be marked with "*" (the mold shall be controlled during manufacturing and must be measured during mold acceptance);
6. Cable wire Black 0.81, wire length 360mm, Three generations of terminal

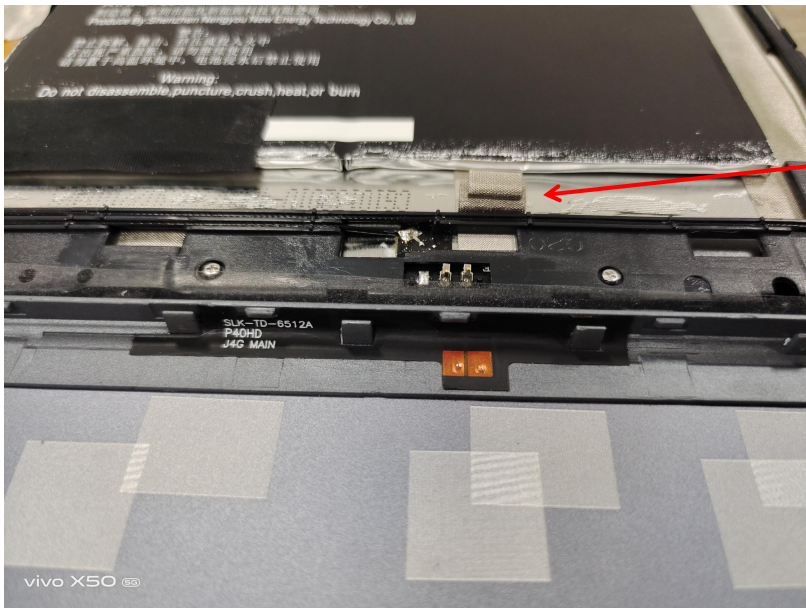
Design	Cailiang liu		Name	
To examine	Zhen Hang		Customer item No	
Approval		weight	quantity	proportion
				1:1
		Sheet 1 of 1		
		Shenzhen Yishengbang Electronics Co., Ltd		

6. Antenna Picture



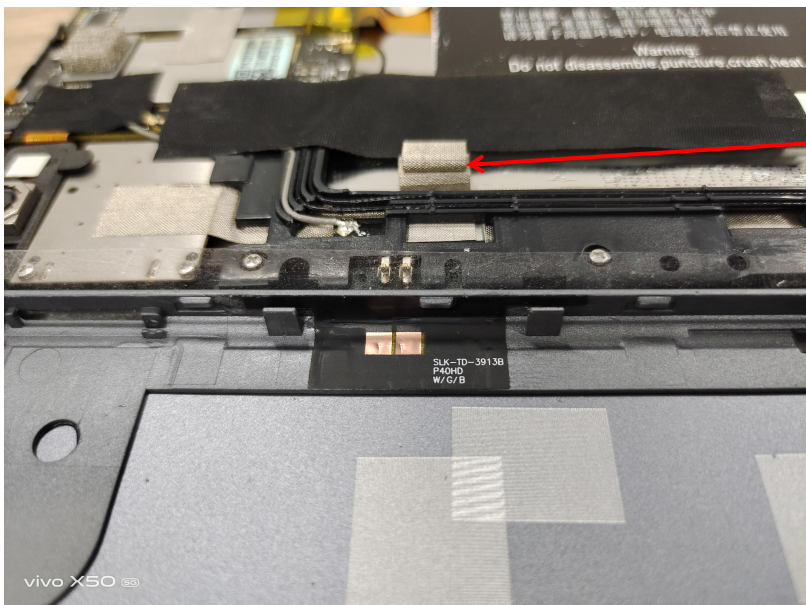
As shown in the picture:

1. Connect a conductive cloth to the motherboard shielding cover, attach a conductive sponge to the copper leakage area of the back cover, and then pull a conductive cloth to ground the screen. The WIFI module shield cover is separately pasted with a conductive sponge to contact the copper leakage area of the back cover.
2. Wire the camera and wrap it with a conductive cloth.
3. Pull a conductive cloth to cover the screen line to shield interference processing.
4. The bottom of the motherboard copper leakage area environment unchanged, according to the customer's original environment treatment, copper leakage area is treated.



As shown in the picture:

Figure 1. Paste a piece of conductive foam on the 4G conductive cloth and contact the copper leakage area of the back cover.



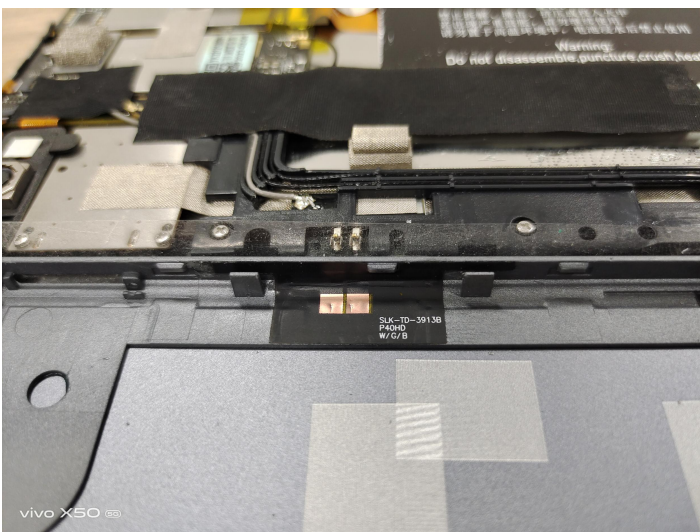
In Figure 2, a piece of conductive foam is pasted on the conductive cloth of the WIFI panel to contact the copper leakage area of the back cover.



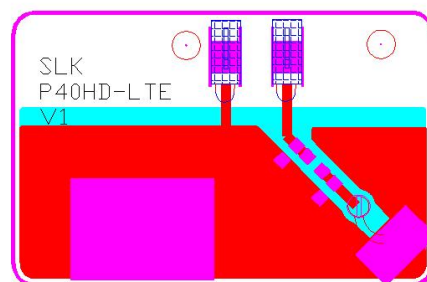
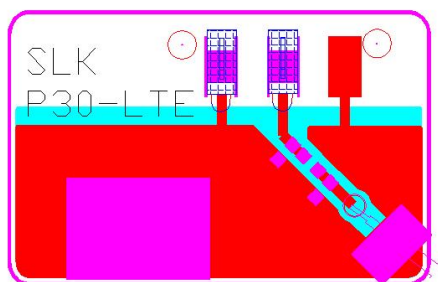
4G aux antenna



4G main antenna

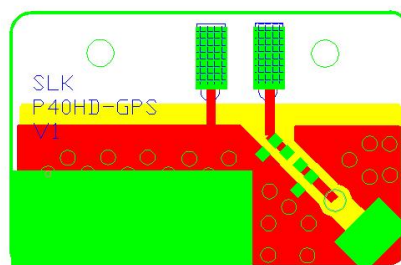
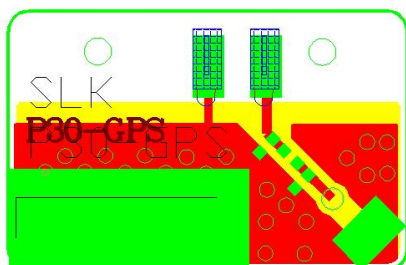


WIFI/GPS antenna



Note:

4G antenna PCB small board change screen printing problem, the final bulk change screen printing is P40HD-LTE VI



Note:

WIFI antenna PCB small board to change the screen printing problem, the final bulk cargo change screen printing is P40HD-GPS VI