

SAR Test Report

Dosimetric Assessment of the Tracking Device OM247 SOLO2 3G 915MHz from G4S (FCC ID: 2ACGBSOL915)

According to the FCC Requirements

April 08, 2015

IMST GmbH
Carl-Friedrich-Gauß-Str. 2 - 4
47475 Kamp-Lintfort
Germany

Customer
TRaC Global Limited
Unit 1, Pendle Place, Skelmersdale
West Lancashire
WN8 9PN

The test results only relate to the items tested.

This report shall not be reproduced except in full without the written approval of the testing laboratory.

Executive Summary

The OM247 SOLO2 3G 915MHz is a new ankle worn tracking device (Portable Device) from G4S operating in the 850 MHz and 1900 MHz frequency range. The device has an integrated antenna and works in the GPRS 850 (Class 10), GPRS 1900 (Class 10) and 900 MHz SRD standards. Since the OM247 SOLO2 3G 915MHz is an ankle worn device, according KDB 447498 D01, IMST has conducted SAR measurements for extremity exposure configuration.

The objective of the measurements done by IMST was the dosimetric assessment of one device in GPRS 850 and GPRS 1900 worst case configuration according the applicable KDB. Measurements for SRD are not required since the output power is below the threshold. The examinations have been carried out with the dosimetric assessment system „DASY4“.

The measurements were made according to the 47 CFR § 2.1093 [47CFR] for evaluating compliance of mobile and portable devices with FCC limits for human exposure (general population) to radiofrequency emissions.

Additional information and guidelines given by the following FCC documents were used:

- SAR Measurement Requirements for 100 MHz to 6 GHz [KDB 865664 D01 v01r03]
- Mobile and Portable Devices RF Exposure Procedures and Equipment Authorization Policies [KDB 447498 D01 v05r02]
- 3G SAR Measurement Procedures [KDB 941225 D01 V03]

All measurements have been performed in accordance to the recommendations given by SPEAG.

Compliance Statement

The assessed SAR values for OM247 SOLO2 3G 915MHz device from G4S (FCC ID: 2ACGBSOL915) are in compliance with the SAR limits over any 10g tissue according to:

- 47 CFR § 2.1093 [47CFR]
- ANSI / IEEE C95.1-1999 [IEEE C95.1-1999]

SAR assessment was conducted with zero separation distance to the flat part of the SAM phantom. All measured SAR results are shown in Table 8, the highest reported results of SAR for the OM247 SOLO2 3G 915MHz are as follows:

| Worst Case SAR Results | | | | | | | | |
|------------------------|-------------|-----|-----------------------|-------|----------|------------------------------------|---------------------------------|------|
| Band | Freq. [MHz] | CH | Phantom Configuration | | Fig. No. | Reported SAR _{10g} [W/kg] | Limit SAR _{10g} [W/kg] | |
| GPRS 850 | 836.6 | 190 | Extremity Exposure | Front | 10 | 1.316 | 4.0 | PASS |
| GPRS 1900 | 1880.0 | 661 | | | | 1.688 | 4.0 | PASS |

Prepared by: 

Alexander Rahn
Test Engineer

Reviewed by: 

Markus Ridder
Quality Assurance

Table of Contents

| | | |
|----------|---|-----------|
| 1 | SUBJECT OF INVESTIGATION | 5 |
| 2 | FCC EXPOSURE CRITERIA..... | 5 |
| 2.1 | <i>DISTINCTION BETWEEN EXPOSED POPULATION, DURATION OF EXPOSURE AND FREQUENCIES</i> | <i>6</i> |
| 2.2 | <i>DISTINCTION BETWEEN MAXIMUM PERMISSIBLE EXPOSURE AND SAR LIMITS</i> | <i>6</i> |
| 3 | THE FCC MEASUREMENT PROCEDURE | 7 |
| 3.1 | <i>GENERAL REQUIREMENTS</i> | <i>7</i> |
| 4 | BODY-WORN CONFIGURATIONS | 7 |
| 4.1 | <i>EXTREMITY EXPOSURE CONDITIONS.....</i> | <i>7</i> |
| 4.2 | <i>PHANTOM REQUIREMENTS</i> | <i>8</i> |
| 4.3 | <i>TEST TO BE PERFORMED</i> | <i>8</i> |
| 4.3.1 | <i>MEASUREMENT VARIABILITY</i> | <i>8</i> |
| 5 | THE MEASUREMENT SYSTEM..... | 9 |
| 5.1 | <i>PHANTOMS.....</i> | <i>10</i> |
| 5.2 | <i>E-FIELD-PROBES.....</i> | <i>11</i> |
| 5.3 | <i>MEASUREMENT PROCEDURE.....</i> | <i>12</i> |
| 5.4 | <i>UNCERTAINTY ASSESSMENT</i> | <i>13</i> |
| 6 | SAR EVALUATION | 14 |
| 6.1 | <i>OUTPUT POWER VALUES</i> | <i>14</i> |
| 6.2 | <i>TUNE-UP INFORMATION</i> | <i>15</i> |
| 6.3 | <i>SAR TEST EXCLUSION CONSIDERATION ACCORDING TO KDB 447498</i> | <i>15</i> |
| 6.4 | <i>SAR RESULTS</i> | <i>16</i> |
| 6.5 | <i>ESTIMATED SAR FOR STANDALONE SAR EXCLUDED MODES ACCORDING KDB 447498</i> | <i>16</i> |
| 6.6 | <i>MULTIPLE TRANSMITTER INFORMATION.....</i> | <i>16</i> |
| 7 | APPENDIX..... | 17 |
| 7.1 | <i>ADMINISTRATIVE DATA.....</i> | <i>17</i> |
| 7.2 | <i>DEVICE UNDER TEST AND TEST CONDITIONS</i> | <i>17</i> |
| 7.3 | <i>TISSUE RECIPES.....</i> | <i>17</i> |
| 7.4 | <i>MATERIAL PARAMETERS</i> | <i>18</i> |
| 7.5 | <i>SIMPLIFIED PERFORMANCE CHECKING.....</i> | <i>18</i> |
| 7.6 | <i>ENVIRONMENT.....</i> | <i>22</i> |
| 7.7 | <i>TEST EQUIPMENT</i> | <i>22</i> |
| 7.8 | <i>CERTIFICATES OF CONFORMITY</i> | <i>24</i> |
| 7.9 | <i>PICTURES OF THE DEVICE UNDER TEST</i> | <i>26</i> |
| 7.10 | <i>TEST POSITIONS FOR THE DEVICE UNDER TEST</i> | <i>27</i> |
| 7.11 | <i>PICTURES TO DEMONSTRATE THE REQUIRED LIQUID DEPTH.....</i> | <i>28</i> |
| 8 | REFERENCES..... | 29 |

1 Subject of Investigation

The OM247 SOLO2 3G 915MHz is a new ankle worn tracking device (Portable Device) from G4S operating in the 850 MHz and 1900 MHz frequency range. The device has an integrated antenna and works in the GPRS 850 (Class 10), GPRS 1900 (Class 10) and 900 MHz SRD standards. Since the OM247 SOLO2 3G 915MHz is an ankle worn device, according KDB 447498 D01, IMST has conducted SAR measurements for extremity exposure configuration.



Fig. 1: Picture of the device under test.

The objective of the measurements done by IMST was the dosimetric assessment of one device in GPRS 850 and GPRS 1900 worst case configuration according the applicable KDB. Based on the KDB 648474 [KDB 648474] measurements for SRD are not required since the output power is below the threshold. The examinations have been carried out with the dosimetric assessment system „DASY4“.

2 FCC Exposure Criteria

In the USA the FCC exposure criteria [KDB 865664] are based on the withdrawn IEEE Standard C95.1-1999 [IEEE C95.1-1999].

In this report the comparison between the FCC exposure limits and the measured data is made using the spatial peak SAR; the power level of the device under test guarantees that the whole body averaged SAR is not exceeded.

Having in mind a worst case consideration, the SAR limit is valid for uncontrolled environment and mobile respectively portable transmitters. According to Table 1 the SAR values have to be averaged over a mass of 10 g (SAR_{10g}) with the shape of a cube.

| Rule | Extremity SAR Limit 10g [W/kg] |
|------------------------|--------------------------------|
| 47 CFR § 2.1093 (d)(2) | 4.0 |

Table 1: Relevant spatial peak SAR limit averaged over a mass of 10 g.

2.1 Distinction between Exposed Population, Duration of Exposure and Frequencies

The American Standard [IEEE C95.1-1999] distinguishes between controlled and uncontrolled environment. Controlled environments are locations where there is exposure that may be incurred by persons who are aware of the potential for exposure as a concomitant of employment or by other cognizant persons. Uncontrolled environments are locations where there is the exposure of individuals who have no knowledge or control of their exposure. The exposures may occur in living quarters or workplaces. For exposure in controlled environments higher field strengths are admissible. In addition the duration of exposure is considered.

Due to the influence of frequency on important parameters, as the penetration depth of the electromagnetic fields into the human body and the absorption capability of different tissues, the limits in general vary with frequency.

2.2 Distinction between Maximum Permissible Exposure and SAR Limits

The biological relevant parameter describing the effects of electromagnetic fields in the frequency range of interest is the specific absorption rate SAR (dimension: power/mass). It is a measure of the power absorbed per unit mass. The SAR may be spatially averaged over the total mass of an exposed body or its parts. The SAR is calculated from the r.m.s. electric field strength E inside the human body, the conductivity σ and the mass density ρ of the biological tissue:

$$SAR = \sigma \frac{E^2}{\rho} = c \frac{\partial T}{\partial t} \Big|_{t \rightarrow 0+} \quad (1)$$

The specific absorption rate describes the initial rate of temperature rise $\partial T / \partial t$ as a function of the specific heat capacity c of the tissue. A limitation of the specific absorption rate prevents an excessive heating of the human body by electromagnetic energy.

As it is sometimes difficult to determine the SAR directly by measurement (e.g. whole body averaged SAR), the standard specifies more readily measurable maximum permissible exposures in terms of external electric E and magnetic field strength H and power density S , derived from the SAR limits. The limits for E , H and S have been fixed so that even under worst case conditions, the limits for the specific absorption rate SAR are not exceeded.

For the relevant frequency range the maximum permissible exposure may be exceeded if the exposure can be shown by appropriate techniques to produce SAR values below the corresponding limits.

3 The FCC Measurement Procedure

3.1 General Requirements

The test shall be performed in a laboratory with an environment which avoids influence on SAR measurements by ambient EM sources and any reflection from the environment itself. The ambient temperature shall be in the range of 20°C to 26°C and 30-70% humidity. All tests have been conducted according the latest version of all relevant KDBs.

4 Body-worn Configurations

Body-worn operating configurations are tested with the belt-clips and holsters attached to the device and positioned against a flat phantom in a normal use configuration. Per FCC KDB 648474 [KDB 648474], Body-worn accessory exposure is typically related to voice mode operations when handsets are carried in body-worn accessories. The body-worn accessory procedures in KDB 447498 [KDB 447498] should be used to test for body-worn accessory SAR compliance, without a headset connected to it. This enables the test results for such configuration to be compatible with that required for hotspot mode when the body worn accessory test separation distance is greater than or equal to that required for hotspot mode, when applicable. When the reported SAR for body worn accessory, measured without headset connected to the handset, is $> 1.2 \text{ W/kg}$, the highest reported SAR configuration for that wireless mode and frequency band should be repeated for that body worn accessory with a headset attached to the handset.

For purpose of determining test requirements, accessories may be divided into two categories: those that do not contain metallic components and those that do. For multiple accessories that do not contain metallic components, the device may be tested only with that accessory which provides the closest spacing to the body.

For multiple accessories that contain metallic components, the device must be tested with each accessory that contains a unique metallic component. If multiple accessories share an identical metallic component, only the accessory that provides the closest spacing to the body must be tested.

Devices that are designed to operate on the body of users using lanyards and straps, or without requiring additional body worn accessories, must be tested for SAR compliance using a conservative minimum test separation distance $\leq 5 \text{ mm}$ to support compliance. Nevertheless, all accessories that contain metallic components must be tested for compliance additionally.

Other separation distances may be used, but they shall not exceed 2.5 cm.

4.1 Extremity exposure conditions

Devices that are designed or intended for use on extremities or mainly operated in extremity only exposure conditions; i.e. hands, wrist, feet and ankles, may require extremity SAR evaluation according 4.2.3 of KDB 447498 D01.

4.2 Phantom Requirements

For body-worn and other configurations a flat phantom shall be used which is comprised of material with electrical properties similar to the corresponding tissues.

4.3 Test to be Performed

For devices with retractable antenna the SAR test shall be performed with the antenna fully extended and fully retracted. Other factors that may affect the exposure shall also be tested. For example, optional antennas or optional battery packs which may significantly change the volume, lengths, flip open/closed, etc. of the device, or any other accessories which might have the potential to considerably increase the peak spatial-average SAR value.

The SAR test shall be performed at the high, middle and low frequency channels of each operating mode. If the SAR measured at the middle channel resp. that channel with the highest output power for each test configuration is $< 0.4 \text{ W/kg}$, testing at the high and low channels is optional.

4.3.1 Measurement Variability

According KDB 865664 repeated measurements are required only when the measured SAR is $\geq 0.80 \text{ W/kg}$. If the measured SAR value of the initial repeated measurement is $< 1.45 \text{ W/kg}$ with $\leq 20\%$ variation, only one repeated measurement is required to reaffirm that the results are not expected to have substantial variations, which may introduce significant compliance concerns. A second repeated measurement is required only if the measured result for the initial repeated measurement is within 10% of the SAR limit and vary by more than 20%, which are often related to device and measurement setup difficulties. The following procedures are applied to determine if repeated measurements are required.

- 1) Repeated measurement is not required when the original highest measured SAR is $< 0.80 \text{ W/kg}$; steps 2) through 4) do not apply.
- 2) When the original highest measured SAR is $\geq 0.80 \text{ W/kg}$, repeat that measurement once.
- 3) Perform a second repeated measurement only if the ratio of largest to smallest SAR for the original and first repeated measurements is > 1.20 or when the original or repeated measurement is $\geq 1.45 \text{ W/kg}$ ($\sim 10\%$ from the 1-g SAR limit).
- 4) Perform a third repeated measurement only if the original, first or second repeated measurement is $\geq 1.5 \text{ W/kg}$ and the ratio of largest to smallest SAR for the original, first and second repeated measurements is > 1.20 .

5 The Measurement System

DASY is an abbreviation of „Dosimetric Assessment System“ and describes a system that is able to determine the SAR distribution inside a phantom of a human being according to different standards. The DASY4 system consists of the following items as shown in Fig: 2. Additional Fig: 3 show the equipment, similar to the installations in other laboratories.

- Fully compliant with all current measurement standards as stated in Fig. 6
- High precision robot with controller
- Measurement server (for surveillance of the robot operation and signal filtering)
- Data acquisition electronics DAE (for signal amplification and filtering)
- Field probes calibrated for use in liquids
- Electro-optical converter EOC (conversion from the optical into a digital signal)
- Light beam (improving of the absolute probe positioning accuracy)
- Two SAM phantoms filled with tissue simulating liquid
- DASY4 software
- SEMCAD

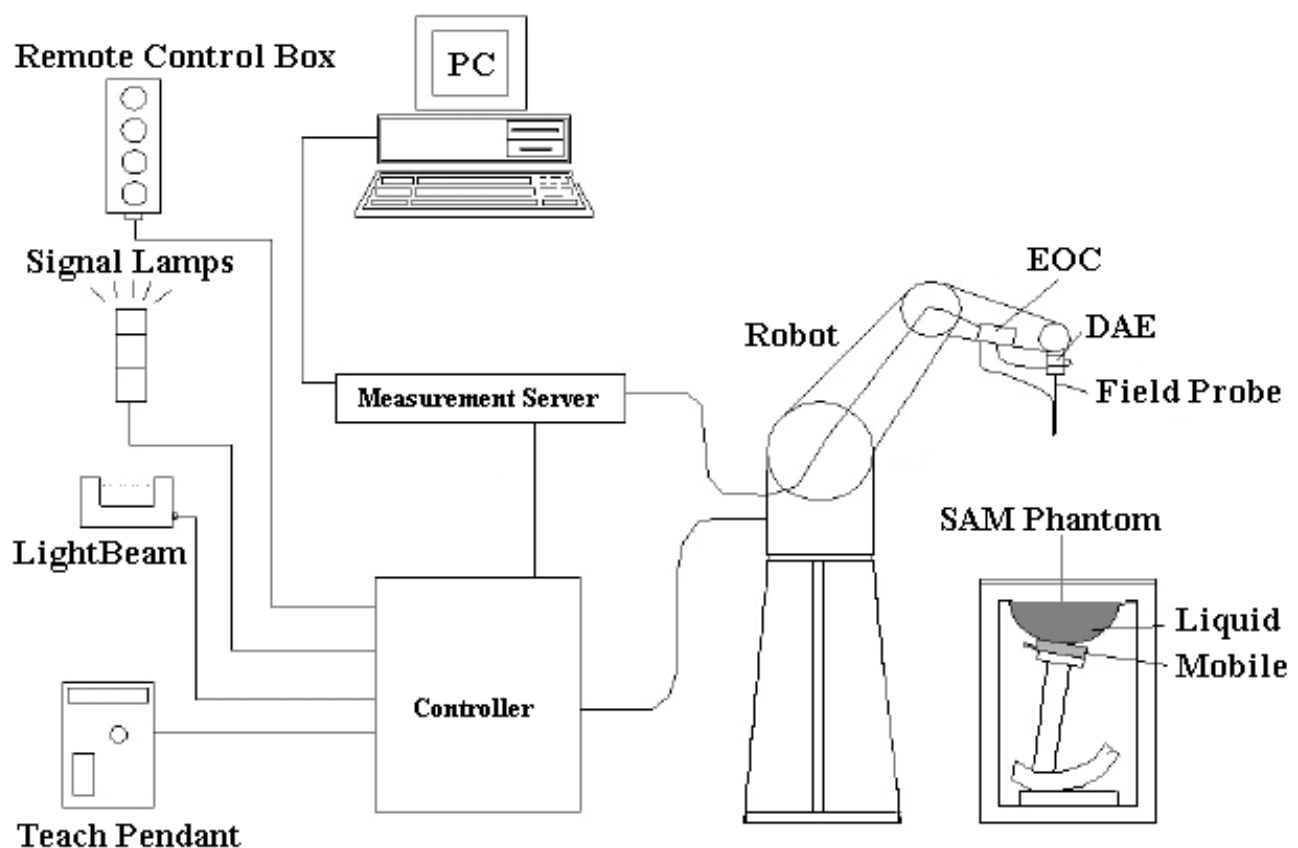


Fig. 2: The DASY4 measurement system.




Fig. 3: The measurement set-up with two SAM phantoms containing tissue simulating liquid.

The mobile phone operating at the maximum power level is placed by a non metallic device holder (delivered from Schmid & Partner) in the above described positions at a shell phantom of a human being. The distribution of the electric field strength E is measured in the tissue simulating liquid within the shell phantom. For this miniaturised field probes with high sensitivity and low field disturbance are used. Afterwards the corresponding SAR values are calculated with the known electrical conductivity σ and the mass density ρ of the tissue in the SEMCAD FDTD software. The software is able to determine the averaged SAR values (averaging region 1 g or 10 g) for compliance testing.

The measurements are done by two scans: first a coarse scan determines the region of the maximum SAR, afterwards the averaged SAR is measured in a second scan within the shape of a cube. The measurement time takes about 20 minutes.

5.1 Phantoms

| TWIN SAM PHANTOM V4.0 | |
|---|--|
|  | Specific Anthropomorphic Mannequin defined in IEEE 1528 and IEC 62209-1 and delivered by Schmid & Partner Engineering AG. It enables the dosimetric evaluation of left and right hand phone usage as well as body mounted usage at the flat phantom region. The details and the Certificate of conformity can be found in Fig. 7. |
| Shell Thickness | 2 ± 0.2 mm (6 ± 0.2 mm at ear point) |
| Dimensions | Length: 1000 mm; Width: 500 mm Height: adjustable feet |
| Filling Volume | approx. 25 liters |

5.2 E-Field-Probes

For the measurements the Dosimetric E-Field Probes ET3DV6R or EX3DV4 with following specifications are used. They are manufactured and calibrated in accordance with KDB 865664 and IEEE [IEEE 1528-2003] recommendations annually by Schmid & Partner Engineering AG.

| ET3DV6R | |
|--------------------------|--|
| Construction | Symmetrical design with triangular core Built-in optical fiber for surface detection system (ET3DV6 only) Built-in shielding against static charges PEEK enclosure material (resistant to organic solvents, e.g., DGBE) |
| Dimensions | Overall length: 337 mm (Tip: 16 mm) Tip diameter: 6.8 mm (Body: 12 mm) Distance from probe tip to dipole centers: 2.7 mm |
| Frequency | 10 MHz to 2.3 GHz Linearity: ± 0.2 dB (30 MHz to 2.3 GHz) |
| Directivity | Axial isotropy: ± 0.2 dB in TSL (rotation around probe axis) Spherical isotropy: ± 0.4 dB in TSL (rotation normal to probe axis) |
| Dynamic Range | 5 $\mu\text{W/g}$ to > 100 mW/g; Linearity: ± 0.2 dB |
| Calibration Range | 450 MHz / 750 MHz / 900 MHz / 1750 MHz / 1900 MHz / 1950 MHz for head and body simulating liquid |

| EX3DV4 | |
|--------------------------|---|
| Construction | Symmetrical design with triangular core Built-in shielding against static charges PEEK enclosure material (resistant to organic solvents, e.g., DGBE) |
| Dimensions | Overall length: 337 mm (Tip: 20 mm) Tip diameter: 2.5 mm (Body: 12 mm) Typical distance from probe tip to dipole centers: 1 mm |
| Frequency | 10 MHz to > 6 GHz Linearity: ± 0.2 dB (30 MHz to 6 GHz) |
| Directivity | Axial isotropy: ± 0.3 dB in TSL (rotation around probe axis) Spherical isotropy: ± 0.5 dB in TSL (rotation normal to probe axis) |
| Dynamic Range | 10 $\mu\text{W/g}$ to > 100 mW/g Linearity: ± 0.2 dB (noise: typically < 1 $\mu\text{W/g}$) |
| Calibration Range | 1950 MHz / 2450 MHz / 2600 MHz / 3500 MHz / 5200 MHz / 5300 MHz / 5600 MHz / 5800 MHz for head and body simulating liquid |

5.3 Measurement Procedure

The following steps are used for each test position:

- Establish a call with the maximum output power with a base station simulator or by software. The connection between the mobile phone and the base station simulator is established via air interface.
- Measurement of the local E-field value at a fixed location (P1). This value serves as a reference value for calculating a possible power drift.
- Measurement of the SAR distribution with resolution settings for area scan and zoom scan according KDB 865664 D01 as shown in Table 2.
- The used extrapolation and interpolation routines are all based on the modified Quadratic Shepard's method [DASY4].
- Repetition of the E-field measurement at the fixed location (P1) and repetition of the whole procedure if the two results differ by more than $\pm 0.21\text{dB}$.

| | | | ≤ 3 GHz | ≥ 3 GHz |
|--|--------------------------------------|---|---|--|
| Maximum distance from closest measurement point (geometric center of probe sensors) to phantom surface | | | 5 ± 1 mm | ½·δ·ln(2) ± 0.5 mm |
| Maximum probe angle from probe axis to phantom surface normal at the measurement location | | | 30° ± 1° | 20° ± 1° |
| Maximum area scan spatial resolution: Δx _{Area} , Δy _{Area} | | | ≤ 2 GHz: ≤ 15 mm 2 - 3 GHz: ≤ 12 mm | 3 - 4 GHz: ≤ 12 mm 4 - 6 GHz: ≤ 10 mm |
| | | | When the x or y dimension of the test device, in the measurement plane orientation, is smaller than the above, the measurement resolution must be ≤ the corresponding x or y dimension of the test device with at least one measurement point on the test device. | |
| Maximum zoom scan spatial resolution: ΔX _{Zoom} , ΔY _{Zoom} | | | ≤ 2 GHz: ≤ 8 mm 2 - 3 GHz: ≤ 5 mm* | 3 - 4 GHz: ≤ 5 mm* 4 - 6 GHz: ≤ 4 mm* |
| Maximum zoom scan spatial resolution, normal to phantom surface | Uniform grid: ΔZ _{Zoom} (n) | | ≤ 5 mm | 3 - 4 GHz: ≤ 4 mm 4 - 5 GHz: ≤ 3 mm 5 - 6 GHz: ≤ 2 mm |
| | graded grid | ΔZ _{Zoom} (1): between 1 st two points closest to phantom surface | ≤ 4 mm | 3 - 4 GHz: ≤ 3 mm 4 - 5 GHz: ≤ 2.5 mm 5 - 6 GHz: ≤ 2 mm |
| | | ΔZ _{Zoom} (n>1): between subsequent points | ≤ 1.5· ΔZ _{Zoom} (n-1) | |
| Minimum zoom scan volume | x, y, z | | ≥ 30 mm | 3 - 4 GHz: ≥ 28 mm 4 - 5 GHz: ≥ 25 mm 5 - 6 GHz: ≥ 22 mm |
| Note: δ is the penetration depth of a plane-wave at normal incidence to the tissue medium: see draft standard IEEE P1528-2011 for details. | | | | |
| * When zoom scan is required and the reported SAR from the area scan based 1-g SAR estimation procedures of KDB 447498 is ≤ 1.4 W/kg, ≤ 8 mm, ≤ 7 mm and ≤ 5 mm zoom scan resolution may be applied, respectively, for 2 GHz to 3 GHz, 3 GHz to 4 GHz and 4 GHz to 6 GHz | | | | |

Table 2: Parameters for SAR scan procedures.

5.4 Uncertainty Assessment

Table 3 includes the worst case uncertainty budget suggested by the IEEE 1528 [IEEE 1528-2003] and determined by Schmid & Partner Engineering AG. The expanded uncertainty (K=2) is assessed to be $\pm 21.7\%$.

| Uncertainty Budget of DASY4 | | | | | | |
|------------------------------|-------------------|--------------------------|------------|-------|---------------------------------|-----------------------------|
| Error Sources | Uncertainty Value | Probability Distribution | Divisor | c_i | Standard Uncertainty | v_i^2 or v_{eff} |
| Measurement System | | | | | | |
| Probe calibration | $\pm 5.9 \%$ | Normal | 1 | 1 | $\pm 5.9 \%$ | ∞ |
| Axial isotropy | $\pm 4.7 \%$ | Rectangular | $\sqrt{3}$ | 0.7 | $\pm 1.9 \%$ | ∞ |
| Hemispherical isotropy | $\pm 9.6 \%$ | Rectangular | $\sqrt{3}$ | 0.7 | $\pm 3.9 \%$ | ∞ |
| Boundary effects | $\pm 1.0 \%$ | Rectangular | $\sqrt{3}$ | 1 | $\pm 0.6 \%$ | ∞ |
| Linearity | $\pm 4.7 \%$ | Rectangular | $\sqrt{3}$ | 1 | $\pm 2.7 \%$ | ∞ |
| System detection limit | $\pm 1.0 \%$ | Rectangular | $\sqrt{3}$ | 1 | $\pm 0.6 \%$ | ∞ |
| Readout electronics | $\pm 1.0 \%$ | Normal | 1 | 1 | $\pm 1.0 \%$ | ∞ |
| Response time | $\pm 0.8 \%$ | Rectangular | $\sqrt{3}$ | 1 | $\pm 0.5 \%$ | ∞ |
| Integration time | $\pm 2.6 \%$ | Rectangular | $\sqrt{3}$ | 1 | $\pm 1.5 \%$ | ∞ |
| RF ambient conditions | $\pm 3.0 \%$ | Rectangular | $\sqrt{3}$ | 1 | $\pm 1.7 \%$ | ∞ |
| Probe positioner | $\pm 0.4 \%$ | Rectangular | $\sqrt{3}$ | 1 | $\pm 0.2 \%$ | ∞ |
| Probe positioning | $\pm 2.9 \%$ | Rectangular | $\sqrt{3}$ | 1 | $\pm 1.7 \%$ | ∞ |
| Algorithm for max SAR eval. | $\pm 1.0 \%$ | Rectangular | $\sqrt{3}$ | 1 | $\pm 0.6 \%$ | ∞ |
| Test Sample Related | | | | | | |
| Device positioning | $\pm 2.9 \%$ | Normal | 1 | 1 | $\pm 2.9 \%$ | 145 |
| Device holder | $\pm 3.6 \%$ | Normal | 1 | 1 | $\pm 3.6 \%$ | 5 |
| Power drift | $\pm 5.0 \%$ | Rectangular | $\sqrt{3}$ | 1 | $\pm 2.9 \%$ | ∞ |
| Phantom and Set-up | | | | | | |
| Phantom uncertainty | $\pm 4.0 \%$ | Rectangular | $\sqrt{3}$ | 1 | $\pm 2.3 \%$ | ∞ |
| Liquid conductivity (target) | $\pm 5.0 \%$ | Rectangular | $\sqrt{3}$ | 0.64 | $\pm 1.8 \%$ | ∞ |
| Liquid conductivity (meas.) | $\pm 2.5 \%$ | Normal | 1 | 0.64 | $\pm 1.6 \%$ | ∞ |
| Liquid permittivity (target) | $\pm 5.0 \%$ | Rectangular | $\sqrt{3}$ | 0.6 | $\pm 1.7 \%$ | ∞ |
| Liquid permittivity (meas.) | $\pm 2.5 \%$ | Normal | 1 | 0.6 | $\pm 1.5 \%$ | ∞ |
| Combined Uncertainty | | | | | $\pm 10.8 \%$ | |

Table 3: Uncertainty budget of DASY4.

6 SAR Evaluation

6.1 Output Power Values

This device supports GPRS Multislot Class 10 without DTM support. The device does not support voice mode. According to the following tables, GPRS 850/1900 with 2 TX represent the worst case, therefore measurements with two active time slots are conducted for GPRS 850/1900.

| Burst Averaged Output Power per Slot [dBm] | | | | |
|--|-------------|-----|------------------|------|
| Band | Freq. [MHz] | CH | GPRS (GMSK /CS1) | |
| | | | 1TX | 2 TX |
| 850 | 824.2 | 128 | 32.5 | 32.4 |
| | 836.6 | 190 | 32.7 | 32.1 |
| | 848.8 | 251 | 32.3 | 32.2 |
| 1900 | 1850.2 | 512 | 29.7 | 29.7 |
| | 1880.0 | 661 | 29.4 | 29.4 |
| | 1909.8 | 810 | 29.6 | 29.6 |

Table 4: Measured output power for GPRS for the OM247 SOLO2 3G 915MHz from G4S.

| Frame Averaged Output Power over 8 Slots [dBm] | | | | |
|--|-------------|-----|------------------|-------------|
| Band | Freq. [MHz] | CH | GPRS (GMSK /CS1) | |
| | | | 1TX | 2 TX |
| 850 | 824.2 | 128 | 23.4 | 26.4 |
| | 836.6 | 190 | 23.6 | 26.1 |
| | 848.8 | 251 | 23.3 | 26.2 |
| 1900 | 1850.2 | 512 | 20.7 | 23.7 |
| | 1880.0 | 661 | 20.3 | 23.3 |
| | 1909.8 | 810 | 20.6 | 23.6 |

Table 5: Measured output power for GPRS averaged over 8 slots for the OM247 SOLO2 3G 915MHz from G4S.

6.2 Tune-Up Information

Tune-up procedure according to KDB 447498 D01v05r02 is applicable. The measured SAR values are scaled according the tune-up information given by the manufacturer, shown below.

| Tune-Up Information [dBm] | | | | |
|-------------------------------|-------------|-----|--------------|---------------|
| Band | Freq. [MHz] | CH | Output Power | Tune-Up Limit |
| GPRS 850 (Class 10 / 2 TX) | 824.2 | 128 | 32.4 | 33.0 |
| | 836.6 | 190 | 32.1 | |
| | 848.8 | 251 | 32.2 | |
| GPRS 1900 (Class 10 / 2TX) | 1850.2 | 512 | 29.7 | 30.0 |
| | 1880.0 | 661 | 29.4 | |
| | 1909.8 | 810 | 29.6 | |

Table 6: Measured output power and tune-up information for OM247 SOLO2 3G 915MHz from G4S.

6.3 SAR Test Exclusion Consideration according to KDB 447498

| Standalone SAR Test Exclusion Considerations for Extremity Exposure | | | | | | |
|---|-------------|---------------|------------|-----------|---------------------------------|-------------------------------|
| Communication System | Freq. [MHz] | Distance [mm] | Pavg [dBm] | Pavg [mW] | Threshold 10g Comparison Values | SAR Test Exclusion (Yes / No) |
| SRD 900 | 921 | 5 | 11.15 | 13.00 | 2.5 | Yes |
| GPRS 850 | 835 | 5 | 33.0 | 1995.26 | 364.6 | No |
| GPRS 1900 | 1880 | 5 | 30.0 | 1000.00 | 274.2 | No |

Table 7: SAR test exclusion for extremity exposure.

The above table shows the Standalone SAR test exclusion according to KDB 447498 D01 v05 with SAR exclusion thresholds for 100 MHz to 6GHz at test separation distances ≤ 50 mm determined by:

$$[(\text{max. power of channel, including tune-up tolerance, mW}) / (\text{min. test separation distance, mm})] [\sqrt{f(\text{GHz})}]$$

≤ 3.0 for 1-g SAR and

≤ 7.5 for 10-g extremity SAR where

- f (GHz) is the RF channel transmit frequency in GHz
- Power and distance are rounded to the nearest mW and mm before calculation
- The result is rounded to one decimal place for comparison

When the minimum test separation distance is < 5 mm, a distance of 5 mm is applied to determine SAR test exclusion.

6.4 SAR Results

Following KDB 447498 D01 V05, the reported SAR is the measured SAR value adjusted for maximum tune-up tolerance.

Scaling Factor = tune-up limit power (mW) / RF power (mW)

Reported SAR = measured SAR * scaling factor

Furthermore, testing of other required channels within the operating mode of frequency band is not required when the reported SAR for the mid-band or highest output power channel is ≤ 0.4 W/kg for transmission band ≥ 200 MHz.

| SAR Results | | | | | | | | | | | | |
|-------------|-------------|---------|--|--------------|------------|---------------------|--------------------|------------------------------------|-------------------|----------------|------------------------------------|----------|
| Band | Freq. [MHz] | Channel | Test Position | Spacing [mm] | Figure No. | Tune-Up Limit [dBm] | Output Power [dBm] | Measured SAR _{10g} [W/kg] | Power Drift [dBm] | Scaling Factor | Reported SAR _{10g} [W/kg] | Plot No. |
| GPRS 850 | 836.6 | 190 | Front | 0 | 10 | 33.0 | 32.1 | 1.070* | -0.158 | 1.230 | 1.316 | 1 |
| | 836.6 | 190 | Back | 0 | 11 | | 32.1 | 0.401 | 0.040 | 1.230 | 0.493 | 2 |
| | 836.6 | 190 | Top | 0 | 12 | | 32.1 | 0.331 | -0.112 | 1.230 | 0.407 | 3 |
| | 824.2 | 128 | Front | 0 | 10 | | 32.4 | 0.910 | -0.130 | 1.148 | 1.045 | 4 |
| | 848.8 | 251 | Front | 0 | 10 | | 32.2 | 0.637 | -0.063 | 1.202 | 0.766 | 5 |
| | 836.6 | 190 | *Variability test according KDB 865664 | | | | | 0.978 | -0.171 | 1.230 | 1.203 | 6 |
| GPRS 1900 | 1880.0 | 661 | Front | 0 | 10 | 30.0 | 29.4 | 1.470* | 0.183 | 1.148 | 1.688 | 7 |
| | 1880.0 | 661 | Back | 0 | 11 | | 29.4 | 0.512 | -0.038 | 1.148 | 0.588 | 8 |
| | 1880.0 | 661 | Top | 0 | 12 | | 29.4 | 0.925 | -0.107 | 1.148 | 1.062 | 9 |
| | 1850.2 | 512 | Front | 0 | 10 | | 29.7 | 1.460 | -0.138 | 1.072 | 1.564 | 10 |
| | 1909.8 | 810 | Front | 0 | 10 | | 29.6 | 1.290 | 0.190 | 1.096 | 1.414 | 11 |
| | 1880.0 | 661 | *Variability test according KDB 865664 | | | | | 1.460 | 0.018 | 1.148 | 1.676 | 12 |

Table 8: SAR results for GPRS Class 10 for OM247 SOLO2 3G 915MHz from G4S.

Note: Tests were performed with a detached strip-line, in the interest of maximum proximity to be achieved between the device and the phantom. The strip-line does not include any metal parts.

6.5 Estimated SAR for Standalone SAR Excluded Modes according KDB 447498

Since the GSM and SRD antennas can't transmit simultaneously, for SRD standard a SAR estimation based on KDB 447498 for SAR excluded modes is not applicable.

6.6 Multiple Transmitter Information

According KDB 447498, simultaneous transmission consideration for multiple transmitters needs to be addressed, if applicable. According the information given by the manufacturer, GSM and SRD can't be active at the same time.

7 Appendix

7.1 Administrative Data

Date of Validation: 835 MHz Body: March 20, 2015
 1900 MHz Body: March 19, 2015
 Date of Measurement: March 19, 2015 - March 20, 2015
 Data Stored: TRaC_60320_6150056
 Contact: IMST GmbH
 Carl-Friedrich-Gauß-Str. 2 - 4
 47475 Kamp-Lintfort
 Germany
 Tel.: +49- 2842-981 384
 Fax: +49- 2842-981 199
 email: ridder@imst.de

7.2 Device under Test and Test Conditions

MTE: OM247 SOLO2 3G 915MHz from G4S
 Date of Receipt: March 03, 2015
 IMEI: SOLGMT610755
 FCC ID: 2ACGBSOL915
 Equipment Class: Portable device
 RF Exposure Environment: General Population/ Uncontrolled; Extremity SAR limits
 Power Supply: Internal battery
 Antenna: integrated
 Used Accessory: N.A.

| Standard | TX Range [MHz] | RX Range [MHz] | Used Channels | Crest Factor | Phantom |
|-----------|-----------------|-----------------|---------------|--------------|-----------------------|
| GPRS 850 | 824.2 – 848.8 | 869.2 – 893.8 | 128, 190, 251 | 4 | SAM Twin Phantom V4.0 |
| GPRS 1900 | 1850.2 – 1909.8 | 1930.2 – 1989.8 | 512, 661, 810 | 4 | |

Table 9: Used channels and crest factors during the test.

7.3 Tissue Recipes

The following recipes are provided in percentage by weight.

| | | |
|----------------|---------|--------------------------------|
| 835 MHz Body: | 52.40 % | De-Ionized Water |
| | 01.50 % | Salt |
| | 45.00 % | Sugar |
| | 00.10 % | Preventol D7 |
| | 01.00 % | Hydroxyetyl-Cellulose |
| 1900 MHz Body: | 29.68 % | Diethylenglykol-monobutylether |
| | 70.00 % | De-Ionized Water |
| | 0.32 % | Salt |

7.4 Material Parameters

For the measurement of the following parameters the HP 85070B dielectric probe kit is used representing the open-ended coaxial probe measurement procedure. The measured values should be within $\pm 5\%$ of the recommended values given by the FCC.

| Tissue Simulating Liquids | | | |
|---------------------------|--------------------------|------------------|-----------------|
| Frequency | | ϵ_r | σ [S/m] |
| 835 MHz Body | Recommended Value | 55.20 ± 2.70 | 0.97 ± 0.10 |
| | Measured Value (Ch. 128) | 54.00 | 0.98 |
| | Measured Value (Ch. 190) | 53.90 | 0.99 |
| | Measured Value (Ch. 251) | 53.80 | 1.00 |
| 1900 MHz Body | Recommended Value | 53.30 ± 2.70 | 1.52 ± 0.15 |
| | Measured Value (Ch. 512) | 52.10 | 1.45 |
| | Measured Value (Ch. 661) | 52.10 | 1.49 |
| | Measured Value (Ch. 810) | 52.00 | 1.54 |

Table 10: Parameters of the tissue simulating liquids.

7.5 Simplified Performance Checking

The simplified performance check was realized using the dipole validation kits. The input power of the dipole antennas were 250 mW (cw signal) and they were placed under the flat part of the SAM phantom. The target and measured results are listed in the table below and shown in figure 4 - 5. The target values were adopted from the calibration certificates which are attached in the appendix. Table 12 includes the uncertainty assessment for the system performance checking which was suggested by the KDB 865664 and determined by Schmid & Partner Engineering AG. The expanded uncertainty ($K=2$) is assessed to be $\pm 16.8\%$. To justify the two year calibration interval of the used validation dipoles, IMST consider the requirements in 3.2.2 of KDB 865664. The result of the annual SAR target, impedance and return loss assessment, conducted by IMST, show no significant deviation to dipole calibration results.

| Dipole Target Results | | | | | |
|-----------------------|--------------------|----------------------|-------------------|--------------|----------------|
| Band | Available Dipoles | | SAR_{1g} [W/kg] | ϵ_r | σ [S/m] |
| GPRS 850 | D835V2, SN #437 | Target Values Body | 2.50 | 56.20 | 0.96 |
| | | Measured Values Body | 2.51 | 53.90 | 0.99 |
| GPRS 1900 | D1900V2, SN #5d051 | Target Values Body | 9.53 | 55.00 | 1.51 |
| | | Measured Values Body | 9.56 | 52.10 | 1.52 |

Table 11: Dipole target and measured results as given by the calibration certificates.

Test Laboratory: IMST GmbH, DASY Blue (I); **File Name:** [200315_b_3536_335.da4](#)

DUT: Dipole 835 MHz SN437; **Type:** D835V2; **Serial:** D835V2 - SN:437

Program Name: System Performance Check at 835 MHz

Communication System: CW; Frequency: 835 MHz; Duty Cycle: 1:1

Medium parameters used: $f = 835$ MHz; $\sigma = 0.99$ mho/m; $\epsilon_r = 53.9$; $\rho = 1000$ kg/m³

Phantom section: Flat Section

DASY4 Configuration:

- Probe: EX3DV4 - SN3536; ConvF(9.8, 9.8, 9.8); Calibrated: 24.07.2014
- Sensor-Surface: 4mm (Mechanical Surface Detection)
- Electronics: DAE3 Sn335; Calibrated: 19.02.2015
- Phantom: SAM Sugar 1059; Type: Speag; Serial: 1059
- Measurement SW: DASY4, V4.7 Build 80; Postprocessing SW: SEMCAD, V1.8 Build 186

d=10mm, Pin=250mW/Area Scan (7x10x1): Measurement grid: dx=15mm, dy=15mm

Maximum value of SAR (measured) = 2.68 mW/g

d=10mm, Pin=250mW/Zoom Scan (7x7x7)/Cube 0: Measurement grid: dx=5mm, dy=5mm, dz=5mm

Reference Value = 52.3 V/m; Power Drift = 0.019 dB

Peak SAR (extrapolated) = 3.77 W/kg

SAR(1 g) = 2.51 mW/g; SAR(10 g) = 1.64 mW/g

Maximum value of SAR (measured) = 2.71 mW/g

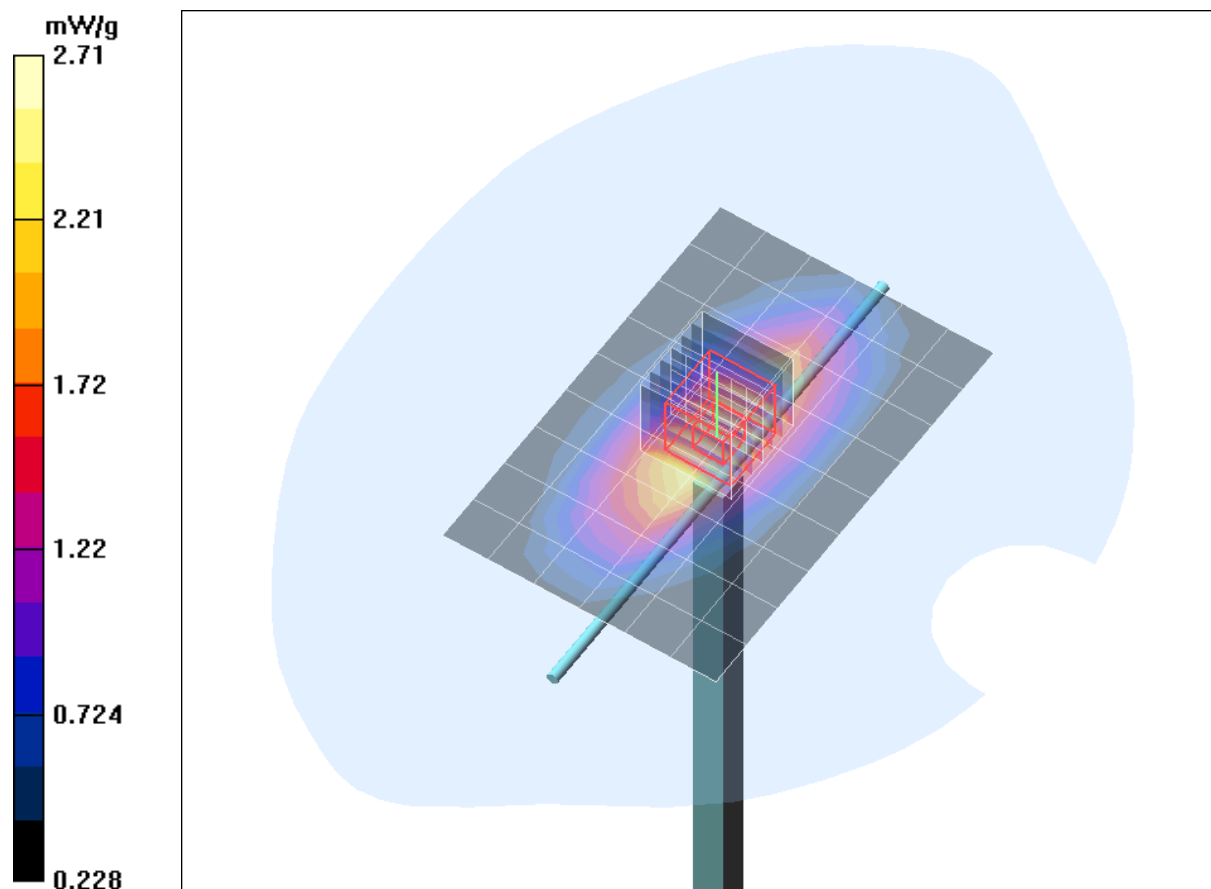


Fig. 4: Validation measurement 835 MHz Body (March 20. 2015), coarse grid.

Test Laboratory: Imst GmbH, DASY Yellow (II); **File Name:** [190315_y_3536_631.da4](#)

DUT: Dipole 1900 MHz SN: 5d051; **Type:** D1900V2; **Serial:** D1900V2 - SN5d051

Program Name: System Performance Check at 1900 MHz

Communication System: CW; Frequency: 1900 MHz; Duty Cycle: 1:1

Medium parameters used: $f = 1900$ MHz; $\sigma = 1.52$ mho/m; $\epsilon_r = 52.1$; $\rho = 1000$ kg/m³

Phantom section: Flat Section

DASY4 Configuration:

- Probe: EX3DV4 - SN3536; ConvF(8.05, 8.05, 8.05); Calibrated: 24.07.2014
- Sensor-Surface: 4mm (Mechanical Surface Detection)
- Electronics: DAE4 Sn631; Calibrated: 23.07.2014
- Phantom: SAM Glycol 1340; Type: QD 000 P40 CB; Serial: TP-1340
- Measurement SW: DASY4, V4.7 Build 80; Postprocessing SW: SEMCAD, V1.8 Build 186

d=10mm, Pin=250mW/Area Scan (10x10x1): Measurement grid: dx=10mm, dy=10mm

Maximum value of SAR (measured) = 9.85 mW/g

d=10mm, Pin=250mW/Zoom Scan (7x7x7)/Cube 0: Measurement grid: dx=5mm, dy=5mm, dz=5mm

Reference Value = 84.4 V/m; Power Drift = -0.072 dB

Peak SAR (extrapolated) = 17.7 W/kg

SAR(1 g) = 9.56 mW/g; SAR(10 g) = 4.93 mW/g

Maximum value of SAR (measured) = 10.7 mW/g

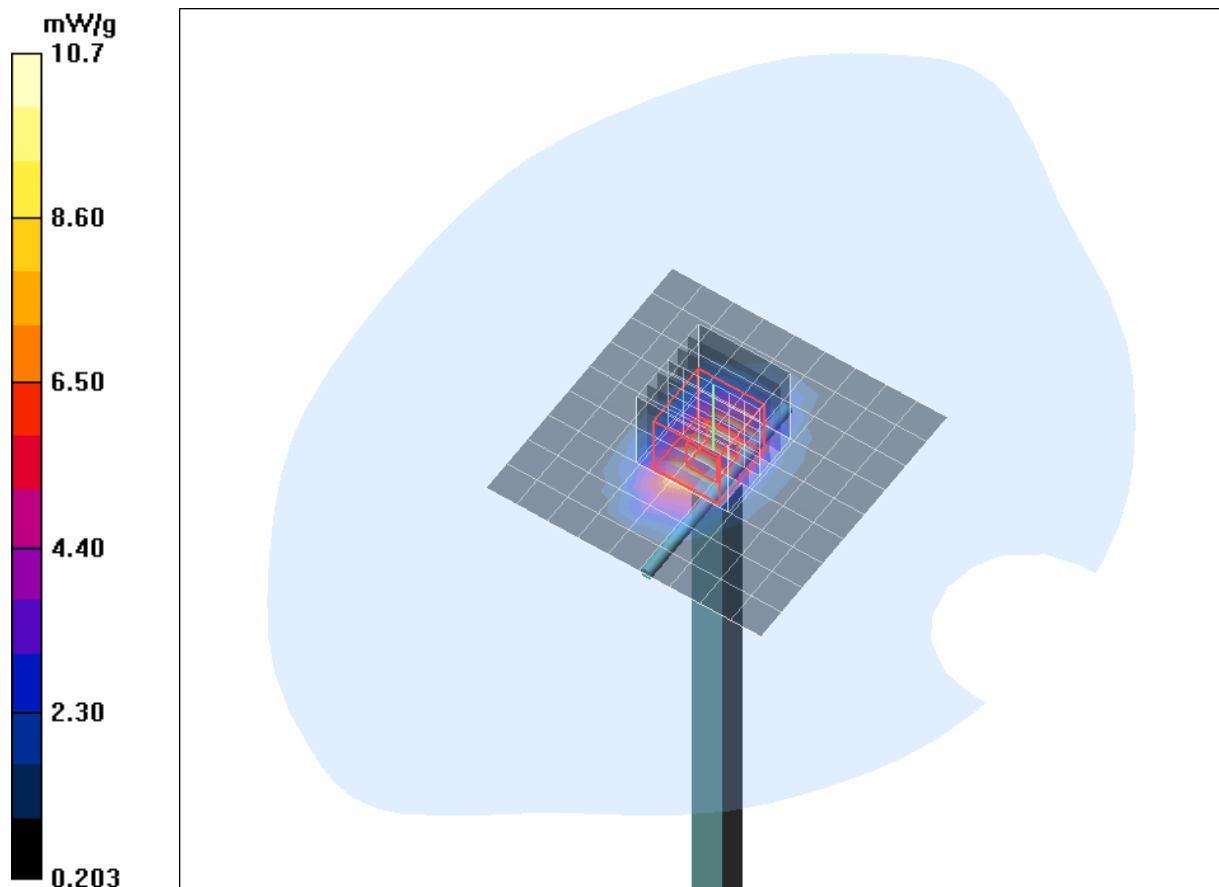


Fig. 5: Validation measurement 1900 MHz Body (March 19. 2015), coarse grid.

| Uncertainty Budget | | | | | | |
|--------------------------------|-------------------|--------------------------|------------|-------|----------------------|----------------------|
| Error Sources | Uncertainty Value | Probability Distribution | Divisor | C_i | Standard Uncertainty | v_i^2 or v_{eff} |
| Measurement System | | | | | | |
| Probe calibration | $\pm 5.9 \%$ | Normal | 1 | 1 | $\pm 5.9 \%$ | ∞ |
| Axial isotropy | $\pm 4.7 \%$ | Rectangular | $\sqrt{3}$ | 1 | $\pm 2.7 \%$ | ∞ |
| Hemispherical isotropy | $\pm 0 \%$ | Rectangular | $\sqrt{3}$ | 1 | $\pm 0 \%$ | ∞ |
| Boundary effects | $\pm 1.0 \%$ | Rectangular | $\sqrt{3}$ | 1 | $\pm 0.6 \%$ | ∞ |
| Linearity | $\pm 4.7 \%$ | Rectangular | $\sqrt{3}$ | 1 | $\pm 2.7 \%$ | ∞ |
| System detection limit | $\pm 1.0 \%$ | Rectangular | $\sqrt{3}$ | 1 | $\pm 0.6 \%$ | ∞ |
| Readout electronics | $\pm 0.3 \%$ | Normal | 1 | 1 | $\pm 0.3 \%$ | ∞ |
| Response time | $\pm 0 \%$ | Rectangular | $\sqrt{3}$ | 1 | $\pm 0 \%$ | ∞ |
| Integration time | $\pm 0 \%$ | Rectangular | $\sqrt{3}$ | 1 | $\pm 0 \%$ | ∞ |
| RF ambient conditions | $\pm 3.0 \%$ | Rectangular | $\sqrt{3}$ | 1 | $\pm 1.7 \%$ | ∞ |
| Probe positioner | $\pm 0.4 \%$ | Rectangular | $\sqrt{3}$ | 1 | $\pm 0.2 \%$ | ∞ |
| Probe positioning | $\pm 2.9 \%$ | Rectangular | $\sqrt{3}$ | 1 | $\pm 1.7 \%$ | ∞ |
| Algorithms for max SAR eval. | $\pm 1.0 \%$ | Rectangular | $\sqrt{3}$ | 1 | $\pm 0.6 \%$ | ∞ |
| Dipole | | | | | | |
| Dipole Axis to Liquid Distance | $\pm 2.0 \%$ | Rectangular | 1 | 1 | $\pm 1.2 \%$ | ∞ |
| Input power and SAR drift mea. | $\pm 4.7 \%$ | Rectangular | $\sqrt{3}$ | 1 | $\pm 2.7 \%$ | ∞ |
| Phantom and Set-up | | | | | | |
| Phantom uncertainty | $\pm 4.0 \%$ | Rectangular | $\sqrt{3}$ | 1 | $\pm 2.3 \%$ | ∞ |
| Liquid conductivity (target) | $\pm 5.0 \%$ | Rectangular | $\sqrt{3}$ | 0.64 | $\pm 1.8 \%$ | ∞ |
| Liquid conductivity (meas.) | $\pm 2.5 \%$ | Normal | 1 | 0.64 | $\pm 1.6 \%$ | ∞ |
| Liquid permittivity (target) | $\pm 5.0 \%$ | Rectangular | $\sqrt{3}$ | 0.6 | $\pm 1.7 \%$ | ∞ |
| Liquid permittivity (meas.) | $\pm 2.5 \%$ | Normal | 1 | 0.6 | $\pm 1.5 \%$ | ∞ |
| Combined Uncertainty | | | | | $\pm 9.2 \%$ | |

Table 12: Uncertainty budget for the system performance check up.

7.6 Environment

To comply with the required noise level (less than 12 mW/kg) periodically measurements without a DUT were conducted.

Humidity: $40\% \pm 5\%$

7.7 Test Equipment

| SAR Equipment | | | | |
|------------------------------|----------|---------------|------------------|------------------|
| Test Equipment | Model | Serial Number | Last Calibration | Next Calibration |
| DASY4 Systems | | | | |
| Software Versions DASY4 | V4.7 | N/A | N/A | N/A |
| Software Versions SEMCAD | V1.8 | N/A | N/A | N/A |
| Dosimetric E-Field Probe | EX3DV4 | 3536 | 07/2014 | 07/2015 |
| Data Acquisition Electronics | DAE 3 | 335 | 02/2015 | 02/2016 |
| Data Acquisition Electronics | DAE 4 | 631 | 07/2014 | 07/2015 |
| Phantom | SAM | 1059 | N/A | N/A |
| Phantom | SAM | 1176 | N/A | N/A |
| Phantom | SAM | 1340 | N/A | N/A |
| Phantom | SAM | 1341 | N/A | N/A |
| Dipoles | | | | |
| Validation Dipole | D835V2 | 437 | 02/2014 | 02/2016 |
| Validation Dipole | D1900V2 | 5d051 | 09/2013 | 09/2015 |
| Material Measurement | | | | |
| Network Analyzer | E5071C | MY46103220 | 07/2013 | 07/2015 |
| Dielectric Probe Kit | HP85070B | US33020263 | N/A | N/A |

Table 13: SAR equipment.

| Test Equipment | | | | |
|-----------------------|---------|---------------|------------------|------------------|
| Test Equipment | Model | Serial Number | Last Calibration | Next Calibration |
| Power Meters | | | | |
| Power Meter. Anritsu | ML2487A | 6K00002319 | 02/2014 | 02/2016 |
| Power Meter. Anritsu | ML2488A | 6K00002078 | 02/2014 | 02/2016 |
| Power Sensors | | | | |
| Power Sensor. Anritsu | MA2481B | 031600 | 02/2014 | 02/2016 |
| Power Sensor. Anritsu | MA2490A | 031565 | 02/2014 | 02/2016 |
| RF Sources | | | | |
| Network Analyzer | E5071C | MY46103220 | 07/2013 | 07/2015 |
| Rohde & Schwarz | SME300 | 100142 | N/A | N/A |
| Amplifiers | | | | |
| Mini Circuits | ZHL-42 | D012296 | N/A | N/A |
| Mini Circuits | ZHL-42 | D031104#01 | N/A | N/A |
| Mini Circuits | ZVE-8G | D031004 | N/A | N/A |
| Radio Tester | | | | |
| Rohde & Schwarz | CMU200 | 835305/050 | N/A | N/A |

Table 14: Test equipment.

Schmid & Partner Engineering AG

Zeughausstrasse 43, 8004 Zurich, Switzerland
Phone +41 44 245 9700, Fax +41 44 245 9779
info@speag.com, <http://www.speag.com>

s p e a g

| | |
|-----------------------|--|
| Item | Dosimetric Assessment System DASY4 |
| Type No | SD 000 401A, SD 000 402A |
| Software Version No | DASY 4.7 |
| Manufacturer / Origin | Schmid & Partner Engineering AG Zeughausstrasse 43, CH-8004 Zürich, Switzerland |

- [1] IEEE 1528-2003, "Recommended Practice for Determining the Peak Spatial-Average Specific Absorption Rate (SAR) in the Human Head from Wireless Communications Devices: Measurement Techniques, December 2003
- [2] EN 50361:2001, "Basic standard for the measurement of Specific Absorption Rate related to human exposure to electromagnetic fields from mobile phones (300 MHz – 3 GHz)", July 2001
- [3] IEC 62209 – 1, "Specific Absorption Rate (SAR) in the frequency range of 300 MHz to 3 GHz – Measurement Procedure, Part 1: Hand-held mobile wireless communication devices", February 2005
- [4] IEC 62209 – 2, Draft Version 0.9, "Evaluation of Human Exposure to Radio Frequency Fields from Handheld and Body-Mounted Wireless Communication Devices in the Frequency Range of 30 MHz to 6 GHz: Human models, Instrumentation and Procedures
Part 2: Procedure to determine the Specific Absorption Rate (SAR) for ... including accessories and multiple transmitters", December 2004
- [5] OET Bulletin 65, Supplement C, "Evaluating Compliance with FCC Guidelines for Human Exposure to Radiofrequency Electromagnetic Fields", Edition 01-01
- [6] ANSI-C63.19-2006, "American National Standard for Methods of Measurement of Compatibility between Wireless Communication Devices and Hearing Aids", June 2006
- [7] ANSI-C63.19-2007, "American National Standard for Methods of Measurement of Compatibility between Wireless Communication Devices and Hearing Aids", June 2007

We certify that this **system is designed to be fully compliant** with the standards [1 – 7] for RF emission tests of wireless devices.

The uncertainty of the measurements with this system was evaluated according to the above standards and is documented in the applicable chapters of the DASY4 system handbook. The uncertainty values represent current state of methodology and are subject to changes. They are applicable to all laboratories using DASY4 provided the following requirements are met (responsibility of the system end user):

- 1) the system is used by an experienced engineer who follows the manual and the guidelines taught during the training provided by SPEAG,
- 2) the probe and validation dipoles have been calibrated for the relevant frequency bands and media within the requested period,
- 3) the DAE has been calibrated within the requested period,
- 4) the "minimum distance" between probe sensor and inner phantom shell and the radiation source is selected properly,
- 5) the system performance check has been successful,
- 6) the operational mode of the DUT is CW, CDMA, FDMA or TDMA (GSM, DCS, PCS, IS136, PDC) and the measurement/integration time per point is ≥ 500 ms,
- 7) if applicable, the probe modulation factor is evaluated and applied according to field level, modulation and frequency,
- 8) the dielectric parameters of the liquid are conformant with the standard requirement,
- 9) the DUT has been positioned as described in the manual.
- 10) the uncertainty values from the calibration certificates, and the laboratory and measurement equipment dependent uncertainties, are updated by end user accordingly.

Date 24.4.2008

Signature / Stamp

by end user accordingly.

Doc No 880 – SD00040XA-Standards 0804 – F

KP/FB

Page 1 (1)

Fig. 6: Certificate of conformity for the used DASY4 system

Schmid & Partner Engineering AG

Zeughausstrasse 43, 8004 Zurich, Switzerland, Phone +41 1 245 97 00, Fax +41 1 245 97 79

Certificate of conformity / First Article Inspection

| | |
|-----------------------|--|
| Item | SAM Twin Phantom V4.0 |
| Type No | QD 000 P40 BA |
| Series No | TP-1002 and higher |
| Manufacturer / Origin | Untersee Composites Hauptstr. 69 CH-8559 Fruthwilen Switzerland |

Tests

The series production process used allows the limitation to test of first articles.
Complete tests were made on the pre-series Type No. QD 000 P40 AA, Serial No. TP-1001 and on the series first article Type No. QD 000 P40 BA, Serial No. TP-1006. Certain parameters have been retested using further series units (called samples).

| Test | Requirement | Details | Units tested |
|----------------------|---|--|-----------------------------|
| Shape | Compliance with the geometry according to the CAD model. | IT'IS CAD File (*) | First article, Samples |
| Material thickness | Compliant with the requirements according to the standards | 2mm +/- 0.2mm in specific areas | First article, Samples |
| Material parameters | Dielectric parameters for required frequencies | 200 MHz – 3 GHz Relative permittivity < 5 Loss tangent < 0.05. | Material sample TP 104-5 |
| Material resistivity | The material has been tested to be compatible with the liquids defined in the standards | Liquid type HSL 1800 and others according to the standard. | Pre-series, First article |

Standards

- [1] CENELEC EN 50361
- [2] IEEE P1528-200x draft 6.5
- [3] IEC PT 62209 draft 0.9

(*) The IT'IS CAD file is derived from [2] and is also within the tolerance requirements of the shapes of [1] and [3].

Conformity

Based on the sample tests above, we certify that this item is in compliance with the uncertainty requirements of SAR measurements specified in standard [1] and draft standards [2] and [3].

Date 18.11.2001

Signature / Stamp



**Schmid & Partner
Engineering AG**

Zeughausstrasse 43, CH-8004 Zurich
Tel. +41 1 245 97 00, Fax +41 1 245 97 79



Fig. 7: Certificate of conformity for the used SAM phantom.

7.9 Pictures of the Device under Test

Figures 8 - 9 show the device under test.

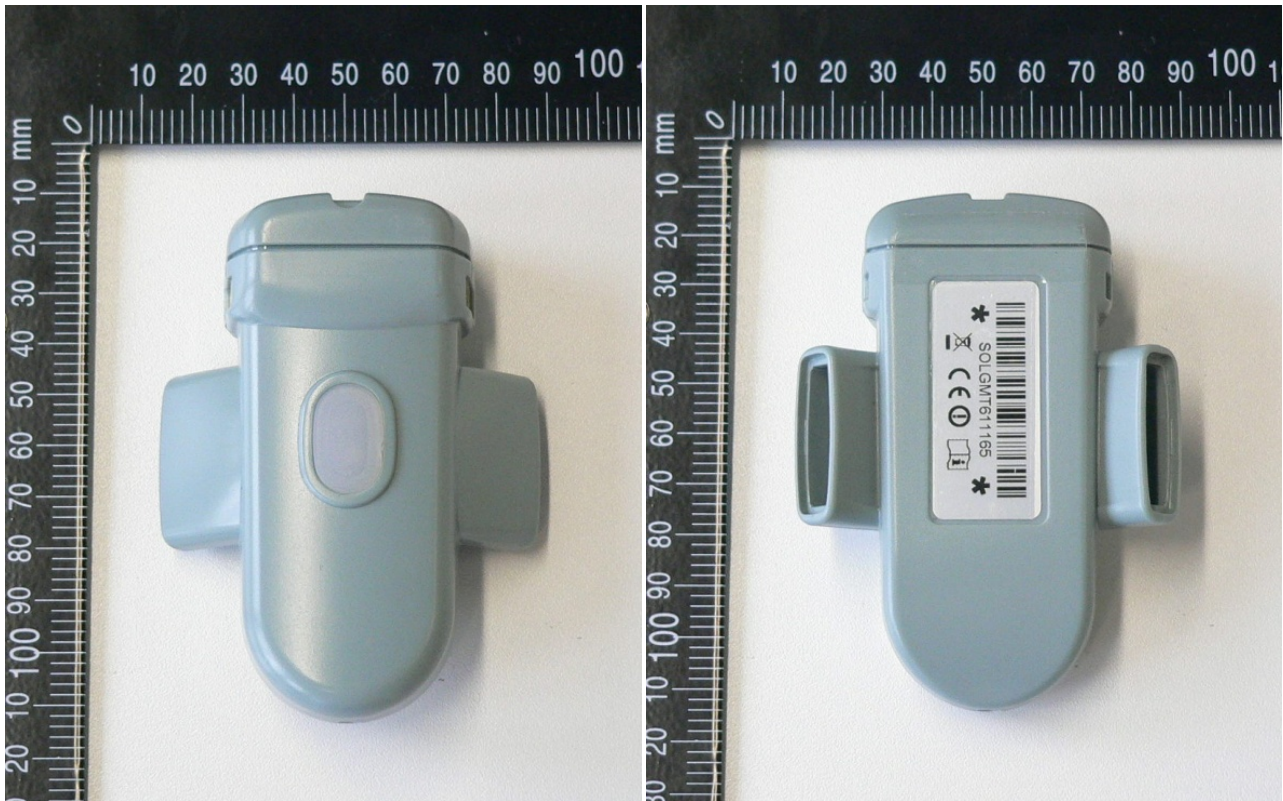


Fig. 8: Front and back view of the OM247 SOLO2 3G 915MHz from G4S.



Fig. 9: Side views of the OM247 SOLO2 3G 915MHz from G4S.

7.10 Test Positions for the Device under Test

Figures 10 - 12 show the test position for the SAR measurements.



Fig. 10: Front side of OM247 SOLO2 3G 915MHz towards the phantom, 0 mm distance.



Fig. 11: Back side of OM247 SOLO2 3G 915MHz without the housing, 0 mm distance.



Fig. 12: Top side of OM247 SOLO2 3G 915MHz towards the phantom, 0 mm distance.

7.11 Pictures to Demonstrate the Required Liquid Depth

Figure 13 - 14 show the liquid depth in the used SAM phantom.



Fig. 13: Liquid depth for GPRS 850



Fig. 14: Liquid depth for GPRS 1900

8 References

- [IEEE C95.1-1999] IEEE Std C95.1-1999: IEEE Standard for Safety Levels with Respect to Human Exposure to Radio Frequency Electromagnetic Fields. 3 kHz to 300 GHz. Inst. of Electrical and Electronics Engineers. Inc.. 1999.
- [IEEE C95.1-2005] IEEE Std C95.1-2005: IEEE Standard for Safety Levels with Respect to Human Exposure to Radio Frequency Electromagnetic Fields. 3 kHz to 300 GHz. Inst. of Electrical and Electronics Engineers. Inc.. 2005.
- [ICNIRP 1998] ICNIRP: Guidelines for Limiting Exposure to Time-varying Electric. Magnetic. and Electromagnetic Fields (up to 300 GHz). In: Health Physics. Vol. 74. No. 4. 494-522. 1998.
- [IEEE 1528-2003] IEEE Std 1528-2003: IEEE Recommended Practice for Determining the Peak Spatial-Average Specific Absorption Rate (SAR) in the Human Head from Wireless Communications Devices: Measurement Techniques. 1528-2003. December 19. 2003. The Institute of Electrical and Electronics Engineers.
- [NIST 1994] NIST: Guidelines for Evaluating and Expressing the Uncertainty of NIST Measurement Results. Technical Note 1297 (TN1297). United States Department of Commerce Technology Administration. National Institute of Standards and Technology. 1994.
- [DASY4] Schmid & Partner Engineering AG: DASY4 Manual. April 2008
- [FCC 96-326] FCC 96-326. ET Docket No. 93-62. Report and Order. August 1. 1996
- [47 CFR] Code of Federal Regulations; Title 47. Telecommunications
- [KDB 447498] 447498 D01 v05r02 General RF Exposure Guidance. February 07, 2014
- [KDB 865664] 865664 D01 v01r03: SAR measurement 100 MHz to 6 GHz. February 07, 2014
- [KDB 941225] KDB 941225 D01 V03: 3G SAR Measurement Procedures. October 16, 2014