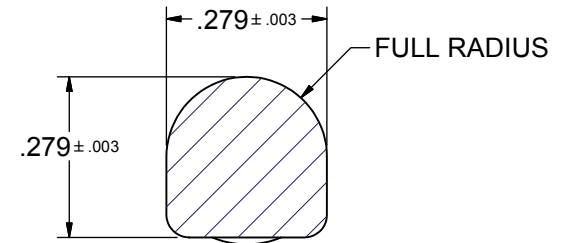
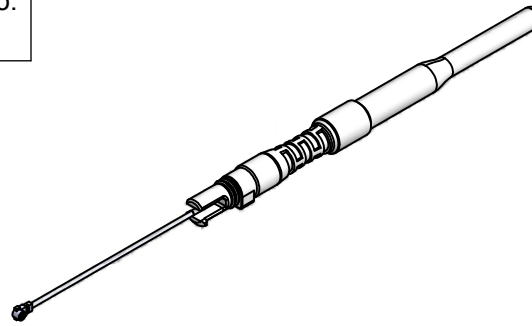


Part No.: QX-008-55
Title: ANTENNA (2.4GHZ)

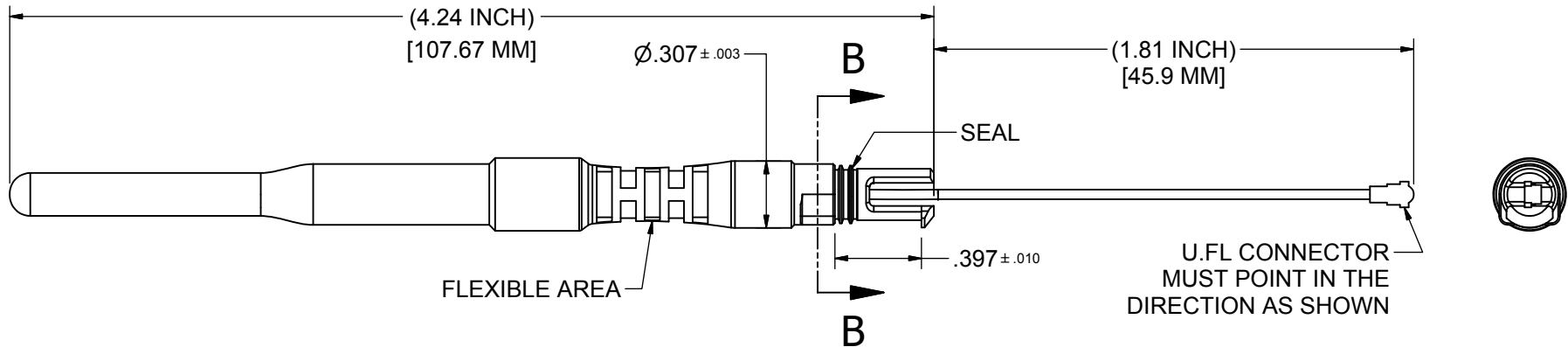
Rev No.
D

NOTES:

1. FREQUENCY (GHz): 2.4 - 2.5
2. GAIN (dBi): 0 ± 1.5
3. IMPEDANCE - NOMINAL (OHMS): 50
4. VSWR: 2.0 MAX.
5. POLARIZATION: VERTICAL
6. ELECTRICAL LENGTH: 1/4 DIPOLE
7. RADIATION: OMNI
8. MATERIAL:
 - LATCH: PC, SHORE D 118, UL94V-0, BLACK.
 - SEAL: RED SILICONE.
 - OVERMOLDING: BLACK TPE COMPOUND, UV & CHEMICAL RESISTANT, SHORE A 76, UL94V-HB.
9. ANTENNA MUST BE ROHS COMPLIANT.
10. ANTENNA MUST MEET WATER INGRESS REQUIREMENTS OF IEC 60529 IP67.



SECTION B-B



THIS DOCUMENT CONTAINS INFORMATION THAT IS CONFIDENTIAL AND PROPRIETARY TO PARKER HANNIFIN ("PARKER"). THIS DOCUMENT IS FURNISHED ON THE UNDERSTANDING THAT THE DOCUMENT AND THE INFORMATION IT CONTAINS WILL NOT BE COPIED OR DISCLOSED TO OTHERS OR USED FOR ANY OTHER PURPOSE THAN CONDUCTING BUSINESS WITH PARKER, AND WILL BE RETURNED AND ALL FURTHER USE DISCONTINUED UPON REQUEST BY PARKER. COPYRIGHT PARKER YEAR OF COPYRIGHT IS FIRST YEAR INDICATED ON THIS DOCUMENT. ALL RIGHTS RESERVED.

Modeled: S.ELLIS

Drawn: S.ELLIS

Checked: R.BRIESE

SHALL CONFORM TO ES1020

Date: 9/12/2013

Approved: S.ELLIS



Quick Coupling
Division

Material: SEE NOTES

Grade: N/A

Heat Treat: N/A

Finish: N/A

BASIC TOLERANCES

2-Place .XX±.01

3-Place .XXX±.005

4-Place .XXXX±.0005

Angular X.X±0.5°

SQUARENESS
(MAX IN/IN)

RUNOUT
(MAX F.I.M.)

MAX AA MACHINED
SURFACE ROUGHNESS

CORNER BREAK
AND FILLETS

.005

.005

125

.001/.015

Wt:0.0073 lbmass

Part No.: QX-008-55

Title: ANTENNA (2.4GHZ)

Reference:

Scale: 1:1

Sheet 1 Of 1

Rev./Ver.

D

ECN

Rev

Revised by

Revision

Date

0098099

D

S.ELLIS

UPDATED PRINT

3/4/2015