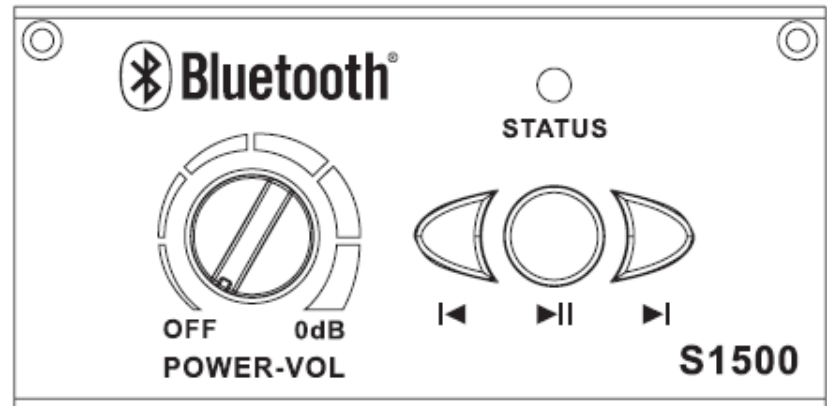
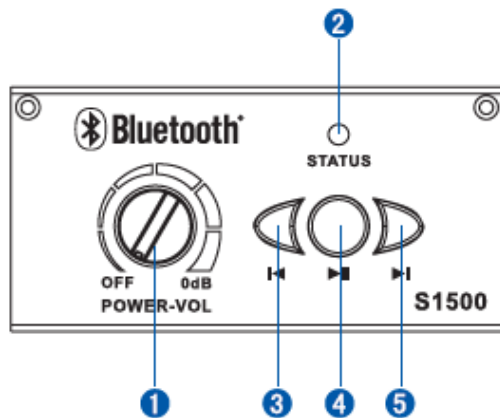


S1500 Bluetooth Receiver User Guide

Brand name: PASGAO

FCC ID: 2ACD8S1500





Faceplate Introduction

①power supply/volume button

Turn the button to “off”, the bluetooth module is closed and power is off. Spin the button clockwise, bluetooth module will be on and volume will get high and higher.

②Status showing button

Green light on, means the power supply of bluetooth module is on. Red light flickers quickly, means player (cell phone bluetooth) is not connected to the module. Red light flickers slowly (flicker about every 2 seconds) means it is playing. Red light off (only green light), means the playing is suspended or connection is finished & the module is ready to play.

③Press this button, it will play the former song.

④Press this button, it will change playing condition. When it is playing, it will suspend if pressing the button. When it doesn't play, it will continue to play if pressing the button.

⑤Press this button, it will play next song.

Notes: In order to avoid sonic boom when skipping or suspending playing, there will be a bit delay after pressing the button. The softwares of some mobile phones are not so suitable for the button controlling of bluetooth panel. Sometimes it even does not operate normally, which mainly caused by software incompatibility. Pls try to install other playing software on your mobile phone.

When the mobile phone is connected with bluetooth module for the first time, there may exist an occasion that the mobile phone can not search bluetooth device. The main reason for this occasion is that some mobile must search on-hook button first, and then it will be connected normally. To solve this problem, please press the playing button for a long time, and click “searching device” in setting functions of your mobile phone bluetooth, till bluetooth device is searched. The bluetooth will be connected when clicking bluetooth device.

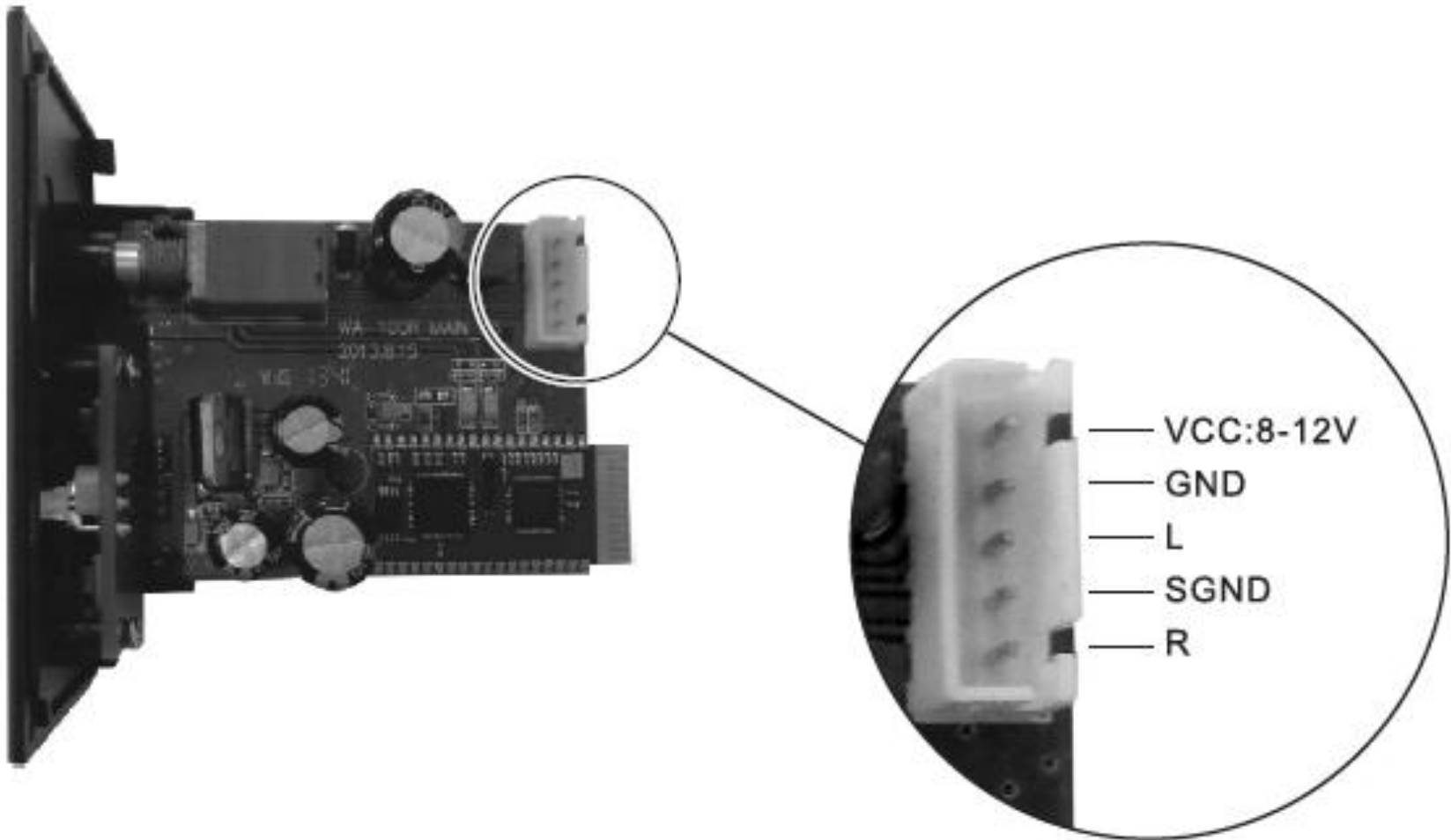
Module Instructions

Firstly, turn on the power supply of bluetooth module. The green light on and red light flickers quickly means module is ready to be connected. Then open the bluetooth of your mobilephone (please make sure there is bluetooth module in your mobile phone, and it supports bluetooth headset). Find bluetooth in the setting function of your mobile phone, and start bluetooth function. Then click “searching device ”in bluetooth setting. After the bluetooth find “AMPLIOX S1500” (this name can be produced according to customer’s requirements, and it should be settled during production. We will omit introducing this function in following passage), then click

“AMPLIOX S1500”, then devices will be connected. When they are connected successfully, you can read “connected already” below “AMPLIOX S1500” on your phone. Or you can check if the status showing button is green. Thus devices finish pairing and being connected.

when the bluetooth module is connected with bluetooth devices, you can start to play music on mobile phone. You can adjust the volume button to reach your requirements.

Connectors sequence



Technical Data

Device name: S1500

Bluetooth version: 3.0

Working Voltage: 8-12V

Working current: 60-80mA (not paired), 45-65mA (paired)

Standby current: 40-70mA (not paired)

Output electrical level: -8.2 dBV (390mVrms)

Frequency response: 20Hz-18KHz

S/N: >68dB

THD: 0.05% (1kHz)

"Attention - Limited Modular Approval

This RF Module is strictly limited to integration into battery powered host devices. Integration into devices that are directly or indirectly connected to AC lines must added via Class II Permissive Change."

(OEM) Integrator has to assure compliance of the entire end-product incl. the integrated RF Module. Additional measurements (15B) and/or equipment authorizations(e.g Verification) may need to be addressed depending on co-location or simultaenous transmission issues if applicable.

Integrator is reminded to assure that these installation instructions will not be made available to the end-user of the final host device.

With the documented max output power this RF Module meets the FCC SAR Exemption - so it comply with any applicable RF exposure requirements in its final configuration.

The RF Module is powered by battery,the antenna is PCB antenna and the antenna gain is 0 dBi

The final host device, into which this RF Module is integrated" has to be labelledwith an auxilliary lable stating the FCC ID of the RF Module, such as"Contains FCC ID: 2ACD8S1500".

This device complies with part 15 of the FCC rules. Operation is subject to the following two conditions:

- (1) this device may not cause harmful interference, and
- (2) this device must accept any interference received, including interference that may cause undesired operation.

"Changes or modifications to this unit not expressly approved by the party responsible for compliance could void the user's authority to operate the equipment."

This BT Module must be always marketed as it is mounted on this PCB with the dedicated onboard antenna.

The BT module itself may not be integrated into any other application without C2P.