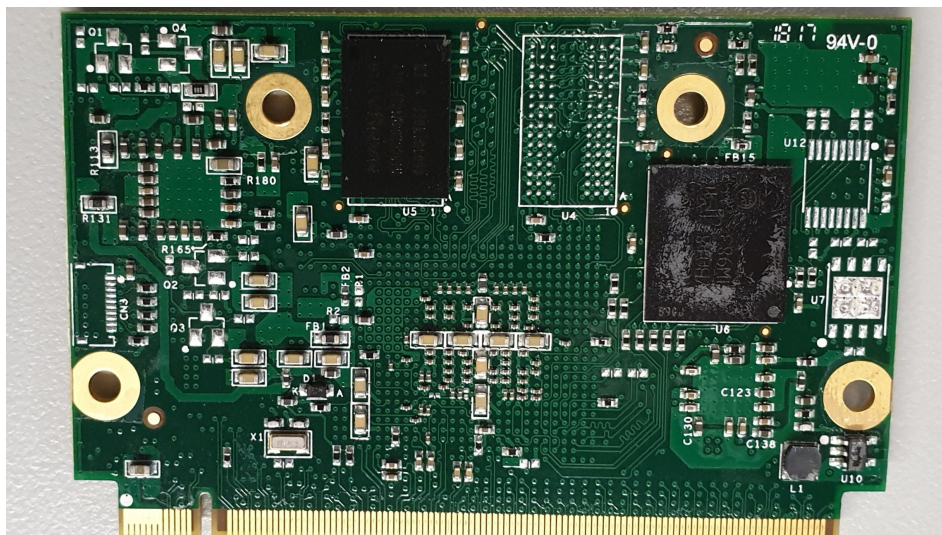
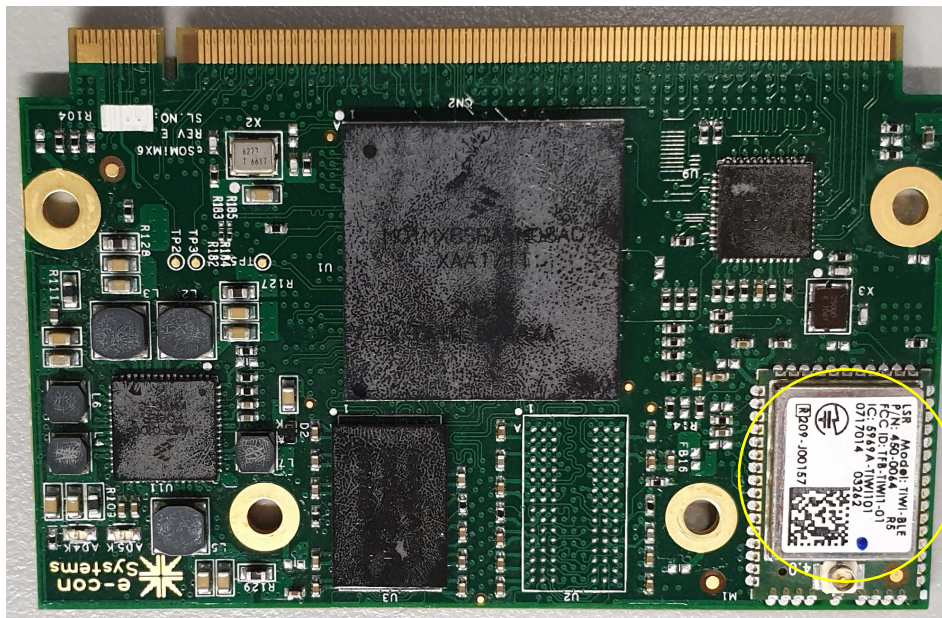
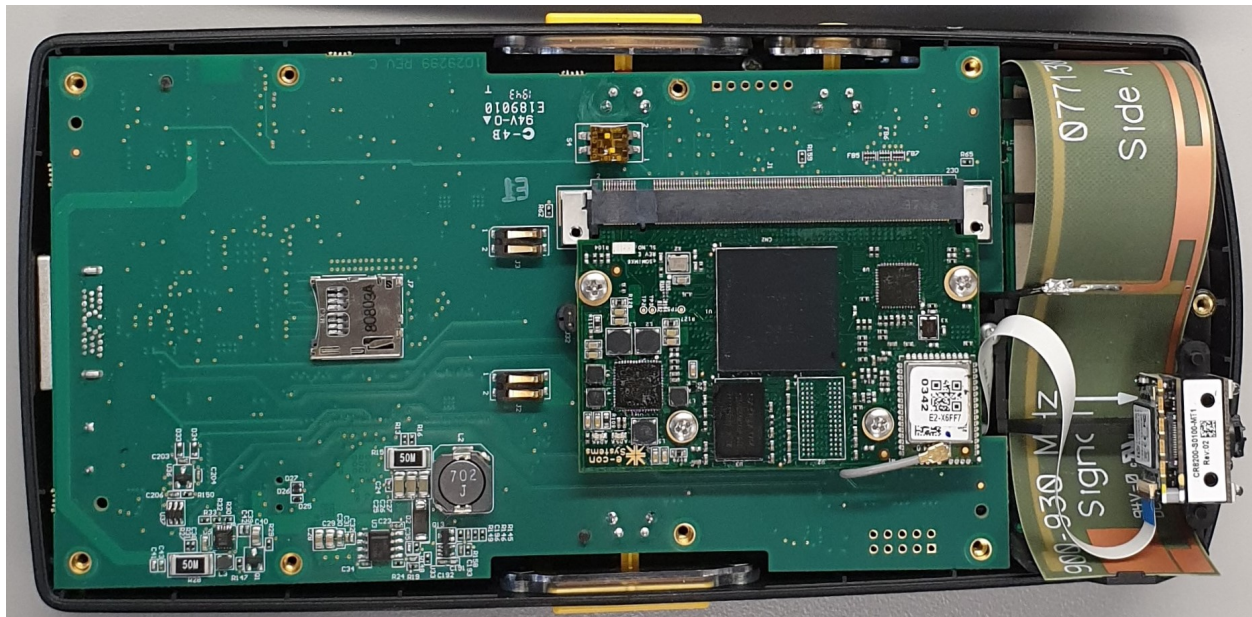


Internal Board Photos of PD67 for Radio ID Change

Wi-Fi Radio (TIWIBLE) is installed on SOM board (yellow circle shows radio module):



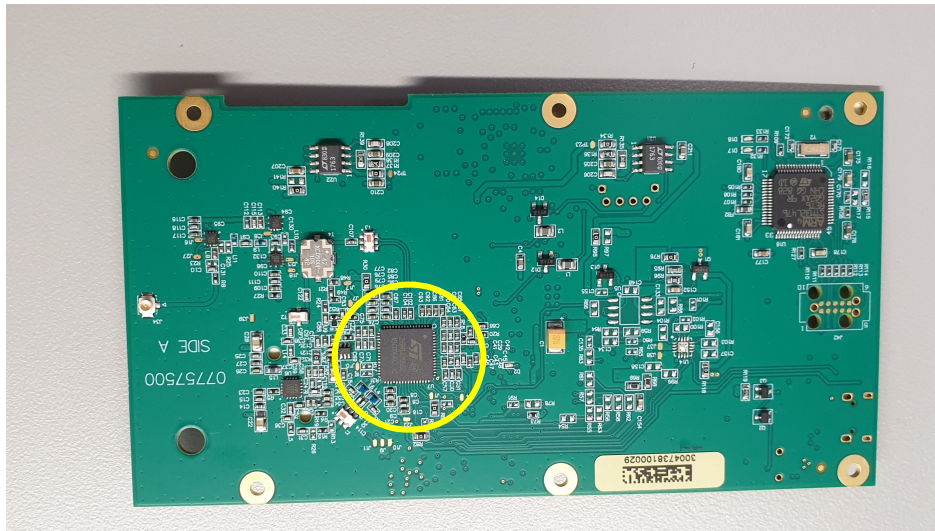
SOM is installed on Baseboard:



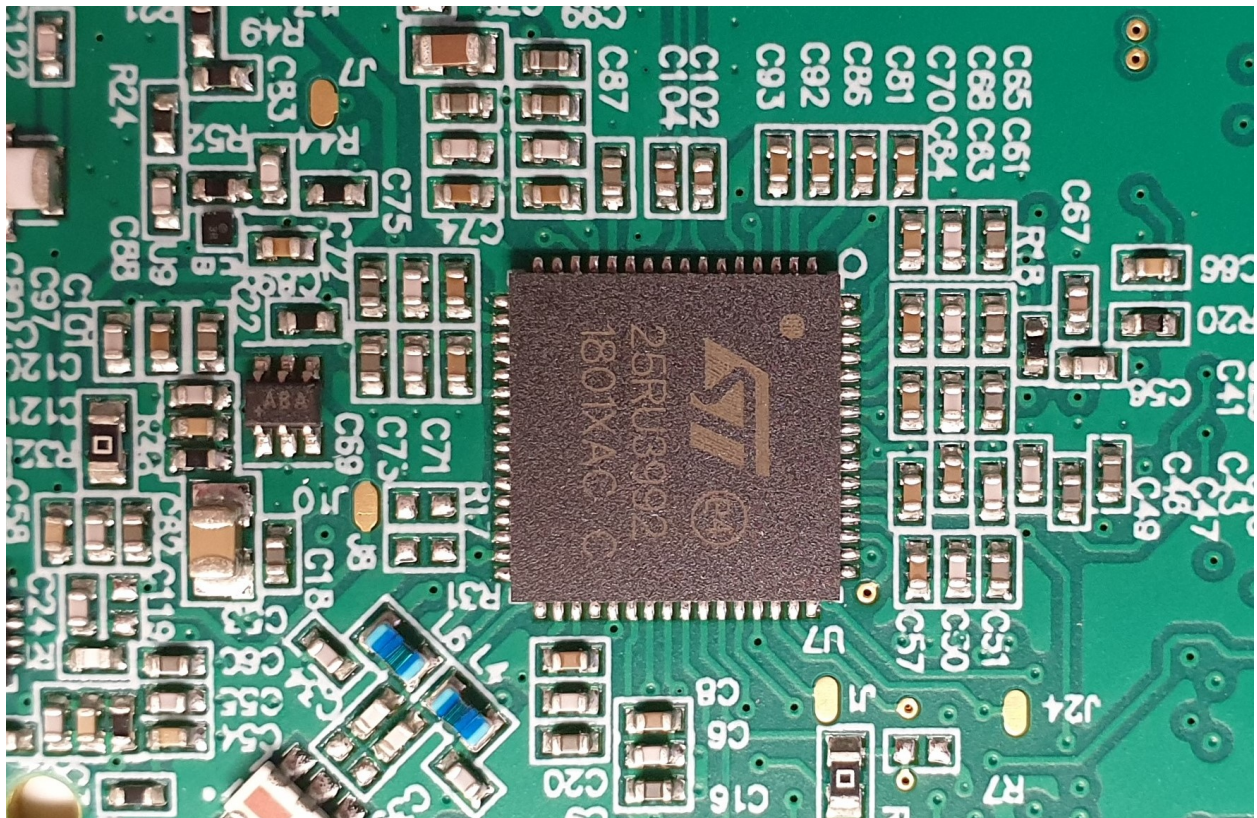
Baseboard communicates with RFID board (yellow circle shows HF radio, triangle is HF antenna, diamond is UHF antenna, and square is Wi-Fi antenna):



Bottom View of RFID board (yellow circle shows UHF Radio):



Close-Up UHF



Close-Up HF

