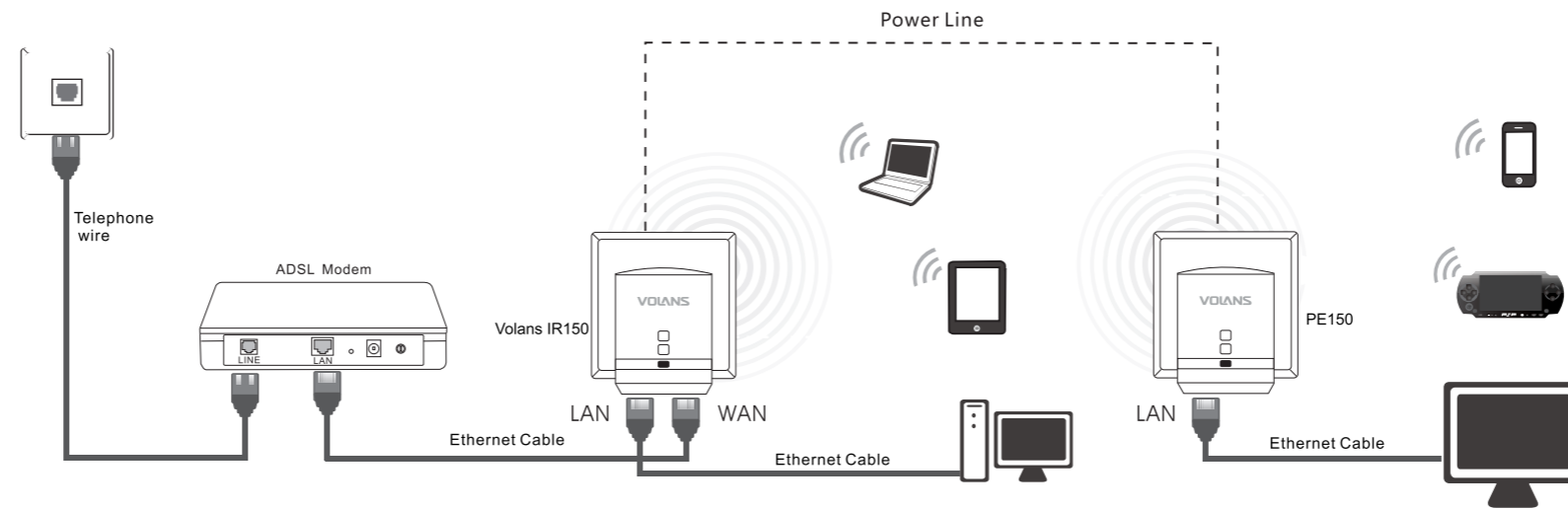


WIFI Coverage Kit QUICK INSTALLATION GUIDE

Volans Technology Development Co., Ltd.

1 Hardware Installation

Step 1: Please follow the instructions to connect IR150 and PE150 as the picture shows



Connectors and LEDs

Ports and LED	Description
LAN	Usually it is connected to a switch or PC
WAN	Usually it is connected to an ADSL modem or other internet access cable, only available on IR150
	Power switch and WIFI status indicator
	PLC matching button and status indicator
	Network status indicator

Warning!

- 1、 Please switch off and remove all the devices during storm
- 2、 Please keep away from heat and ensure good indoor ventilation
- 3、 Please keep away from water and moisture
- 4、 Please use IR150 and PE150 under one set of power line
- 5、 Please avoid using the same power socket with other high-power electric appliances

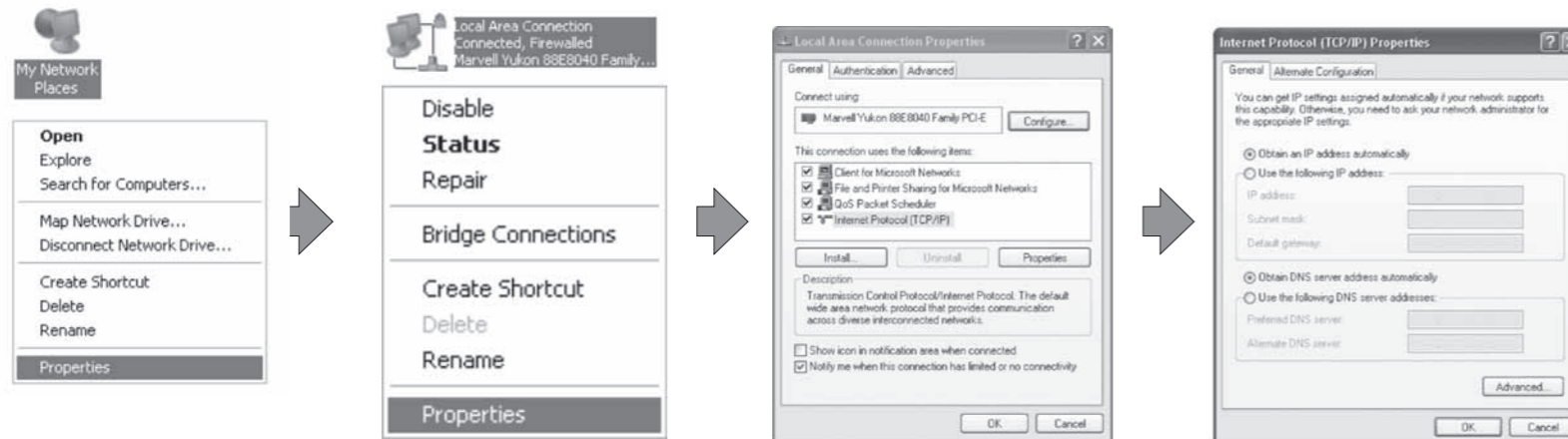
LED: WIFI status indicator, switching on when WIFI is working, blinking when data transmission happens

Button: Press the button and hold for 1 to 3 seconds: matching PLC. Press the button and hold for 10 seconds, system reset.
LED: PLC status indicator, switching on when PLC is matched and Blinking when data transmission happens

2 Configure Your Computer

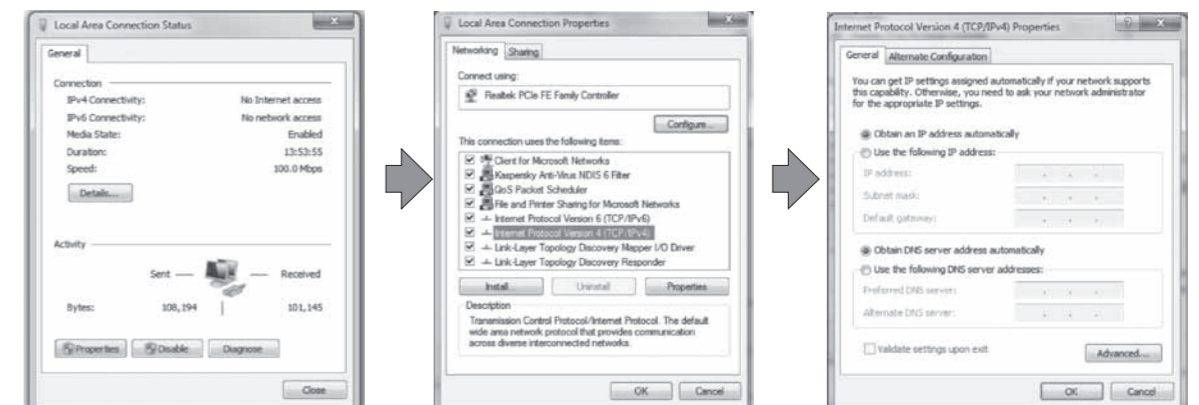
Windows 2000/XP Please follow the steps below to configure Windows 2000 and Windows XP OP

- 1 Go to My Computer, right click "My Network Places", and choose "Properties"
- 2 Right click "Local Area Connection", and choose "Properties"
- 3 Double click "Internet Protocol (TCP/IP)"
- 4 Choose "Obtain an IP address automatically" and "Obtain DNS server address automatically", and then click "OK" to return. Click "OK" again to finish configuring your computer.



Windows Vista/7 Please follow the steps below to configure Windows Vista and Windows 7 OP

- 1 Click "Start-Control Panel-Network and Internet-Network and Sharing Center-Local Area Network", choose "Local Area Network", and then click "Properties"
- 2 Double click "Internet Protocols 4(TCP/IPv4)"
- 3 Choose "Obtain an IP address automatically" and "Obtain DNS server address automatically", and then click "OK" to return. Click "OK" again to finish configuring your computer.

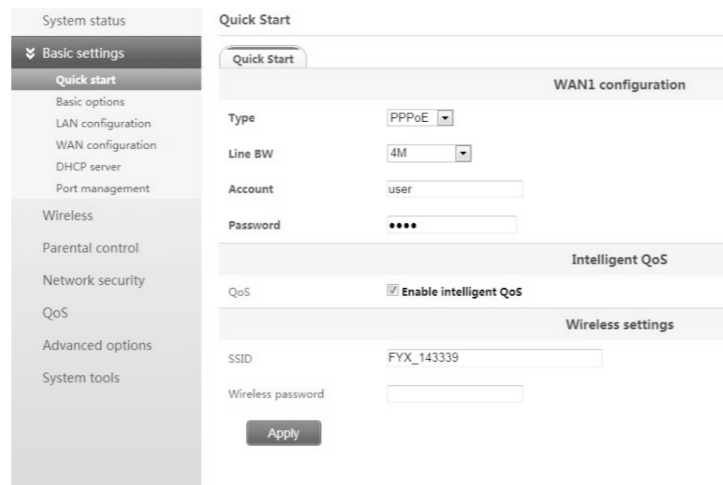


3 Configure the Gateway

Log in Web UI
Open IE, input 192.168.0.1 and then enter. Input User Name and Password on the login page. Defaults of both are “admin”

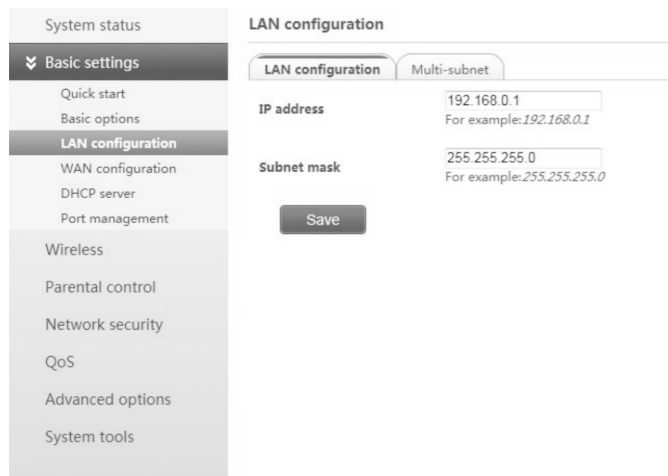


Method 1: Use configuration wizard and follow the instructions

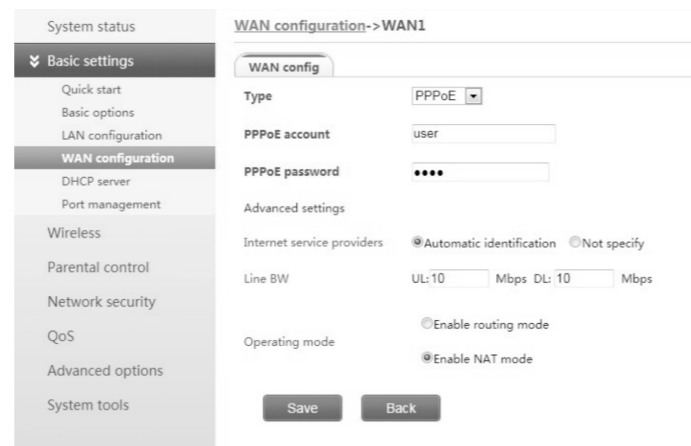


Method 2: Follow the steps below to manually configure Ir150

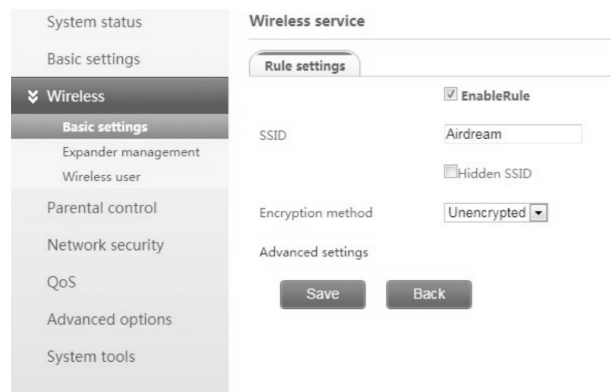
1 Click “Basic Settings- LAN Configurations” , and input the gateway IP address and subnet mask



2 Click “Basic Settings- WAN Configurations” , and configure WAN1 port. Input the parameters as required according to the Access Mode. Please consult your ISP if you have questions of the parameters.



3 Click “WLAN Control- Service Settings” , and configure the gateway’ s SSID and encryption.

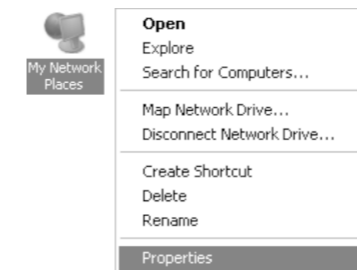


4 After you finish, please reboot the gateway to take effect.

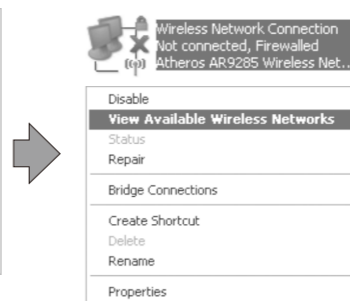
4 Set Up WIFI Connections

In order to use WIFI, first you need to make sure your computer has a wireless network adapter and its driver installed. Second, you need to disconnect the Ethernet cable between your computer and the gateway or other routers. And then you follow the below steps. Here we take Window XP as an example.

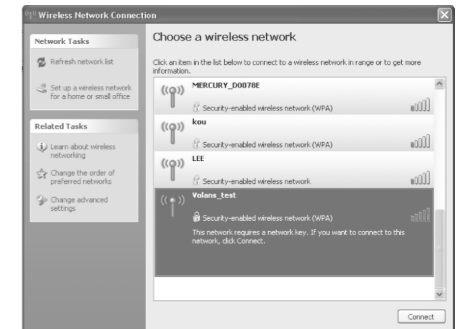
1 Go to My Computer, right click “My Network Places” , and choose “Properties”



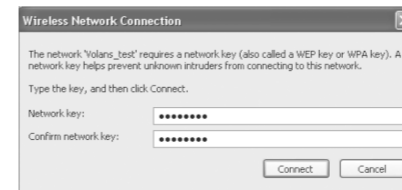
2 Right click “Wireless Network Connection” , and choose “View Available Wireless Networks”



3 Click “Refresh Network List” , and double click the SSID created earlier



4 Input the preset SSID and Password, and click “Connect” .



5 Congratulations! Now you can surf on the internet through Volans IR150 and Pe150.

Thank you for choosing Volans Wireless Cloud. This Quick Installation Guide is only for you to configure the basic information in order to access internet. Please read the Wireless Cloud User Manual to know more details about our products.

If you have any questions, please contact our local distributor or contact us at:

Volans Technology Development Co., Ltd.
8th Floor, Building G4, Tianfu Software Park,
No. 1800 Middle Yizhou Avenue, Chengdu, China 610041
Email: overseas@adslr.com
Http:// www.adslr.com
TEL: +86 28 8533 6711

PRODUCT CERTIFICATE

MODEL NUMBER:_____

PRODUCTION DATE:_____

QUALITY CONTROL:_____

Ver:201308

FCC Statement

This equipment has been tested and found to comply with the limits for a Class B digital device, pursuant to Part 15 of the FCC Rules. These limits are designed to provide reasonable protection against harmful interference in a residential installation. This equipment generates, uses and can radiate radio frequency energy and, if not installed and used in accordance with the instructions, may cause harmful interference to radio communications. However, there is no guarantee that interference will not occur in a particular installation. If this equipment does cause harmful interference to radio or television reception, which can be determined by turning the equipment off and on, the user is encouraged to try to correct the interference by one of the following measures:

- Reorient or relocate the receiving antenna.
- Increase the separation between the equipment and receiver.
- Connect the equipment into an outlet on a circuit different from that to which the receiver is connected.
- Consult the dealer or an experienced radio/TV technician for help.

FCC Caution: Any changes or modifications not expressly approved by the party responsible for compliance could void the user's authority to operate this equipment. This device complies with Part 15 of the FCC Rules. Operation is subject to the following two conditions: (1) This device may not cause harmful interference, and (2) this device must accept any interference received, including interference that may cause undesired operation.

Ver:201306