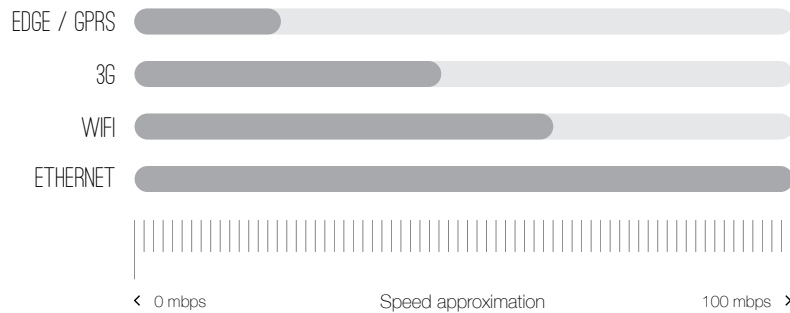


## APPROXIMATE INTERNET SPEEDS



## APPENDIX

- **BRCK < NAME >** : The default name of your BRCK, where < NAME > is a randomly generated code for setup
- **Browser** : A software application for presenting resources on the World Wide Web.  
The major web browsers are Google Chrome, Mozilla Firefox, Internet Explorer, Opera, Safari & Lynx

- **Status Light** : The top guide light on your BRCK (*fig A - 1*)
- **AUX USB** : USB slot to connect external devices eg: phone, tablets etc - 500mA Max (*fig A - 3*)
- **Ethernet Port** : Ethernet slot used to connect an ethernet cable (RJ45 cable) to another router (*fig A - 4*)
- **SIM Port** : SIM card slot used to Insert a data enabled SIM card (*fig A - 5*)
- **Power Micro-USB Port** : Micro-USB slot used to charge the BRCK using the provided USB cable (*fig A - 5*)
- **Cell RP-SMA** : Antenna expansion port (attach antenna for better coverage) (*fig A - 6*)
- **GPIO connection** : The bottom port used to connect external devices (*fig A - 7*)

**Warranty** : 6 month warranty against defects in materials and workmanship.  
For more information see <http://www.brck.com/warranty>

This device complies with Part 15 of the FCC Rules. Operation is subject to the following two conditions:

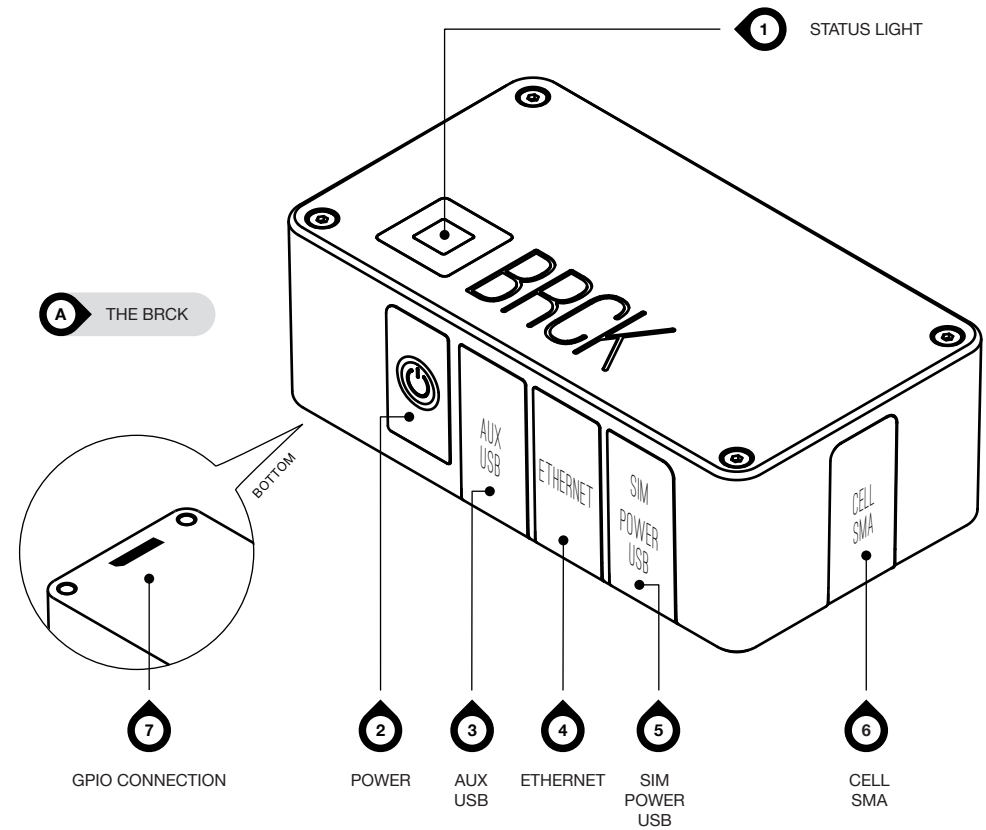
1. This device may not cause harmful interference
2. This device must accept any interference received, including interference that may cause undesired operation.



MODEL: BRCK V1

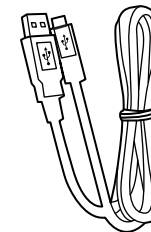
## QUICK START GUIDE

SETUP YOUR BRCK IN 7 SIMPLE STEPS

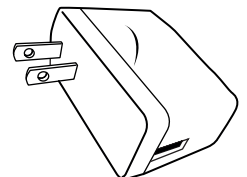


## ACCESSORIES

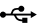
**B USB CABLE**

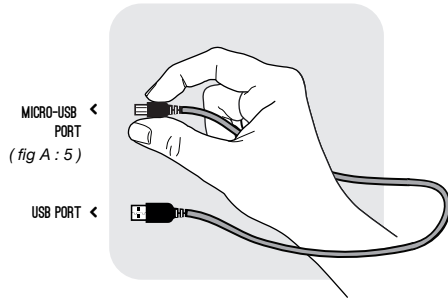


**C POWER PLUG**




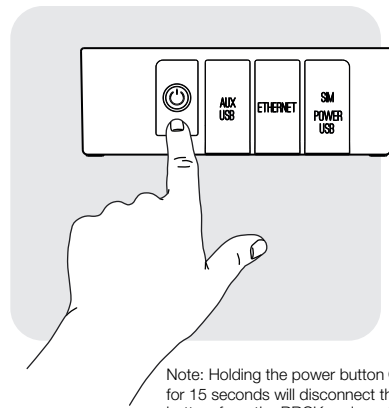
## 1 PLUG IN YOUR BRCK TO POWER

Connect the  **USB power cable** to your **BRCK**



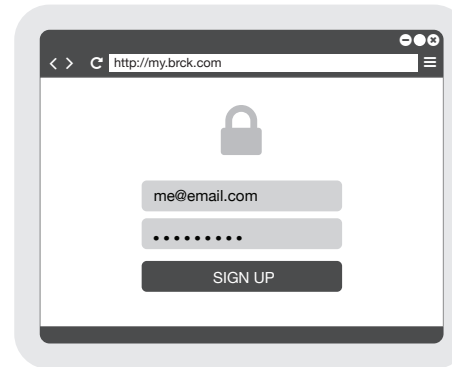
## 2 TURN ON YOUR BRCK

On the side of the BRCK press the power button  to turn on your BRCK



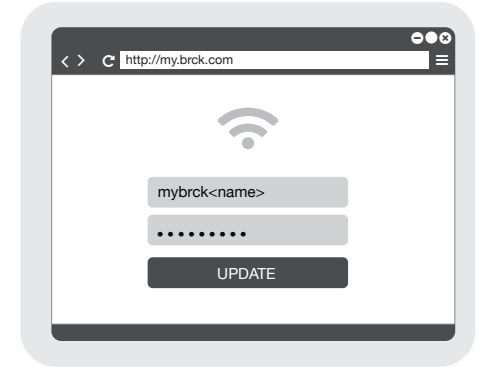
## 5 SIGNUP OR LOGIN

Setup to a new account or login to an already existing profile



## 6 SETUP BRCK'S WIFI NAME & PASSWORD

Configure your BRCK'S WIFI in the **Preferences** section of your **BRCK's Dashboard**



## 3 CONNECT TO "BRCK<NAME>" WIFI SIGNAL

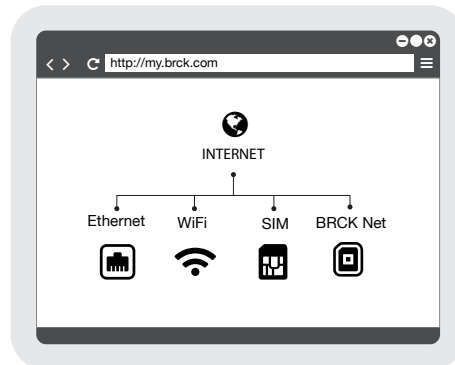
On your computer, smartphone or tablet search for the BRCK WiFi signal  and connect



## 4 GO TO <http://my.brck.com> ON A BROWSER

(Chrome, Firefox, Safari, Internet Explorer)

**⚠ Not connected?** Make sure you have either plugged in an Ethernet cable, look for another WiFi connection, or insert a SIM card with data enabled.




## 7 YAY! YOU ARE CONNECTED

Connect your devices with your BRCK's WiFi signal (maximum 20)



**⚠ Having trouble connecting?** visit : [my.brck.com/help](http://my.brck.com/help).

Note: The power button  is the disconnecting device, and will disconnect all networks from the BRCK

# CONFORMITY ASSESSMENT ISSUES

## FCC/IC Regulatory notices

### Modification statement

BRCK Inc has not approved any changes or modifications to this device by the user. Any changes or modifications could void the user's authority to operate the equipment.

*BRCK Inc n'approuve aucune modification apportée à l'appareil par l'utilisateur, quelle qu'en soit la nature. Tout changement ou modification peuvent annuler le droit d'utilisation de l'appareil par l'utilisateur.*

### Interference statement

This device complies with Part 15 of the FCC Rules and Industry Canada licence-exempt RSS standard(s). Operation is subject to the following two conditions: (1) this device may not cause interference, and (2) this device must accept any interference, including interference that may cause undesired operation of the device.

*Le présent appareil est conforme aux CNR d'Industrie Canada applicables aux appareils radio exempts de licence. L'exploitation est autorisée aux deux conditions suivantes : (1) l'appareil ne doit pas produire de brouillage, et (2) l'utilisateur de l'appareil doit accepter tout brouillage radioélectrique subi, même si le brouillage est susceptible d'en compromettre le fonctionnement.*

### Wireless notice

This equipment complies with FCC and IC radiation exposure limits set forth for an uncontrolled environment. This equipment should be installed and operated with minimum distance of 20 cm between the radiator and any person and must not be collocated with other transmitters except otherwise authorised.

This device is approved to be used with a PIFA antenna with a maximum gain of 0 dBi.

This product integrates and is authorized to be co-located with a Novatel Wireless, MC545 High-Speed Data Modem (FCC ID: NBZNRM-MC545; IC: 3229A-MC545).

*Cet appareil est conforme aux limites d'exposition aux rayonnements de la IC pour un environnement non contrôlé. Cet équipement doit être installé et utilisé à une distance minimum de 20 cm entre le radiateur et toute personne et ne doit pas être co-implanté avec d'autres émetteurs, sauf autorisation contraire.*

*Ce dispositif est approuvé pour être utilisé avec une antenne PIFA avec un gain maximum de 0 dBi.*

*Ce produit intègre et est autorisé à être co-localisés avec une Novatel Wireless, MC545 High-Speed Data Modem (FCC ID: NBZNRM-MC545; IC: 3229A-MC545).*

### FCC Class B digital device notice

This equipment has been tested and found to comply with the limits for a Class B digital device, pursuant to part 15 of the FCC Rules. These limits are designed to provide reasonable protection against harmful interference in a residential installation. This equipment generates, uses and can radiate radio frequency energy and, if not installed and used in accordance with the instructions, may cause harmful interference to radio communications. However, there is no guarantee that interference will not occur in a particular installation. If this equipment does cause harmful interference to radio or television reception, which can be determined by turning the equipment off and on, the user is encouraged to try to correct the interference by one or more of the following measures:

- Reorient or relocate the receiving antenna.
- Increase the separation between the equipment and receiver.
- Connect the equipment into an outlet on a circuit different from that to which the receiver is connected.
- Consult the dealer or an experienced radio/TV technician for help.

**CAN ICES-3 (B) / NMB-3 (B)**

This Class B digital apparatus complies with Canadian ICES-003.

*Cet appareil numérique de classe B est conforme à la norme canadienne ICES-003.*