



SGS-CSTC Standards Technical Services (Suzhou) Co., Ltd.

Report No.: SUCR250600059201

Rev.: 01

Page: 1 of 6

Appendix B

Detailed Test Results

1. WIFI
WIFI2.4G
2. BT
BT

This document is issued by the Company subject to its General Conditions of Service printed overleaf, available on request or accessible at <http://www.sgs.com/en/Terms-and-Conditions> and, for electronic format documents, subject to Terms and Conditions for Electronic Documents at <http://www.sgs.com/en/Terms-and-Conditions/Terms-e-Document>. Attention is drawn to the limitation of liability, indemnification and jurisdiction issues defined therein. Any holder of this document is advised that information contained hereon reflects the Company's findings at the time of its intervention only and within the limits of Client's instructions, if any. The Company's sole responsibility is to its Client and this document does not exonerate parties to a transaction from exercising all their rights and obligations under the transaction documents. This document cannot be reproduced except in full, without prior written approval of the Company. Any unauthorized alteration, forgery or falsification of the content or appearance of this document is unlawful and offenders may be prosecuted to the fullest extent of the law.

Unless otherwise stated the results shown in this test report refer only to the sample(s) tested and such sample(s) are retained for 30 days only.

Attention: To check the authenticity of testing / inspection report & certificate, please contact us at telephone:(86-755) 8307 1443, or email: CN.Doccheck@sgs.com

SGS-CSTC Standards Technical Services (Suzhou) Co., Ltd.
Wireless Laboratory

South of No. 6 Plant, No. 1, RunSheng Road, Suzhou Industrial Park,
Suzhou Area, China (Jiangsu) Pilot Free Trade Zone 215000

t (86-512) 6229 2980
www.sgsgroup.com.cn

Test Laboratory: SGS-SAR Lab

A2444 WIFI2.4G 802.11b 1Mbps 1CH Front side 10mm

DUT: A2444; Type: Watch;

Communication System: UID 0, WI-FI(2.4GHz) (0); Frequency: 2412 MHz;Duty Cycle: 1:1

Medium: HSL2450;Medium parameters used: $f = 2412$ MHz; $\sigma = 1.797$ S/m; $\epsilon_r = 40.156$; $\rho = 1000$ kg/m³

Phantom section: Flat Section

DASY 5 Configuration:

- Probe: EX3DV4 - SN7767; ConvF(8.03, 8.03, 8.03) @ 2412 MHz; Calibrated: 2024/12/31
- Sensor-Surface: 1.4mm (Mechanical Surface Detection)
- Electronics: DAE4 Sn867; Calibrated: 2024/12/31
- Phantom: Twin-SAM V5.0 (30deg probe tilt); Type: QD 000 P40 CD; Serial: 1609
- DASY52 52.10.4(1527); SEMCAD X 14.6.14(7483)

Configuration/Body/Area Scan (10x10x1): Measurement grid: dx=12mm, dy=12mm
Maximum value of SAR (measured) = 0.359 W/kg

Configuration/Body/Zoom Scan (7x7x7)/Cube 0: Measurement grid: dx=5mm, dy=5mm, dz=5mm

Reference Value = 12.70 V/m; Power Drift = -0.07 dB

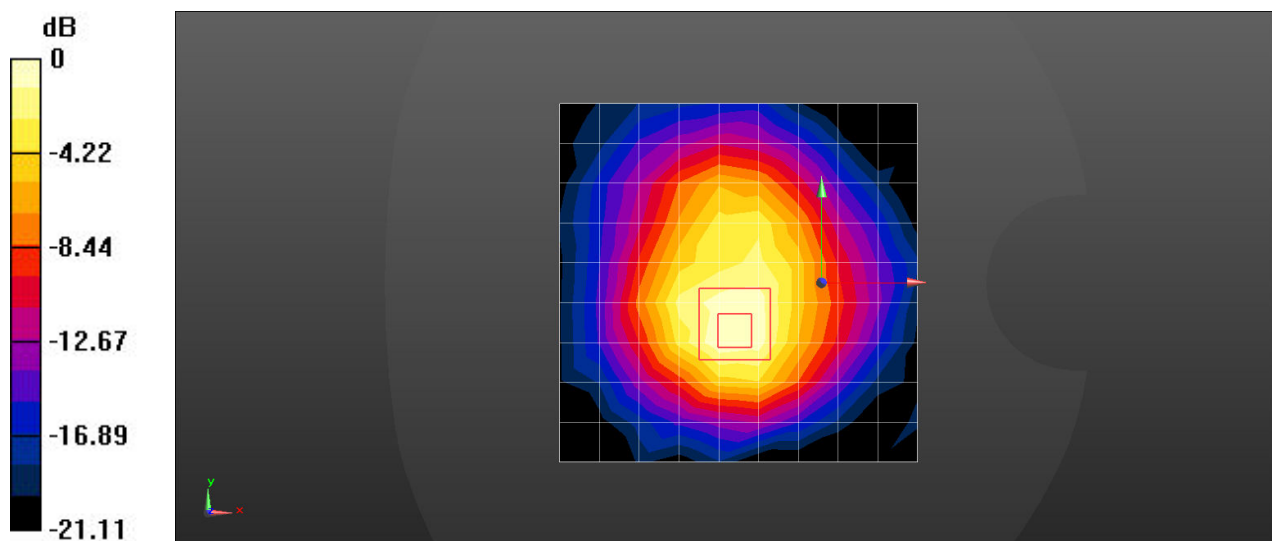
Peak SAR (extrapolated) = 0.438 W/kg

SAR(1 g) = 0.258 W/kg; SAR(10 g) = 0.137 W/kg

Smallest distance from peaks to all points 3 dB below = 12.7 mm

Ratio of SAR at M2 to SAR at M1 = 60.8%

Maximum value of SAR (measured) = 0.375 W/kg



Test Laboratory: SGS-SAR Lab

A2444 WIFI2.4G 802.11b 1Mbps 1CH Back side 0mm

DUT: A2444; Type: Watch;

Communication System: UID 0, WI-FI(2.4GHz) (0); Frequency: 2412 MHz;Duty Cycle: 1:1

Medium: HSL2450;Medium parameters used: $f = 2412$ MHz; $\sigma = 1.797$ S/m; $\epsilon_r = 40.156$; $\rho = 1000$ kg/m³

Phantom section: Flat Section

DASY 5 Configuration:

- Probe: EX3DV4 - SN7767; ConvF(8.03, 8.03, 8.03) @ 2412 MHz; Calibrated: 2024/12/31
- Sensor-Surface: 1.4mm (Mechanical Surface Detection)
- Electronics: DAE4 Sn867; Calibrated: 2024/12/31
- Phantom: Twin-SAM V5.0 (30deg probe tilt); Type: QD 000 P40 CD; Serial: 1609
- DASY52 52.10.4(1527); SEMCAD X 14.6.14(7483)

Configuration/Body/Area Scan (10x10x1): Measurement grid: dx=12mm, dy=12mm
Maximum value of SAR (measured) = 0.352 W/kg

Configuration/Body/Zoom Scan (7x7x7)/Cube 0: Measurement grid: dx=5mm, dy=5mm, dz=5mm

Reference Value = 7.655 V/m; Power Drift = 0.06 dB

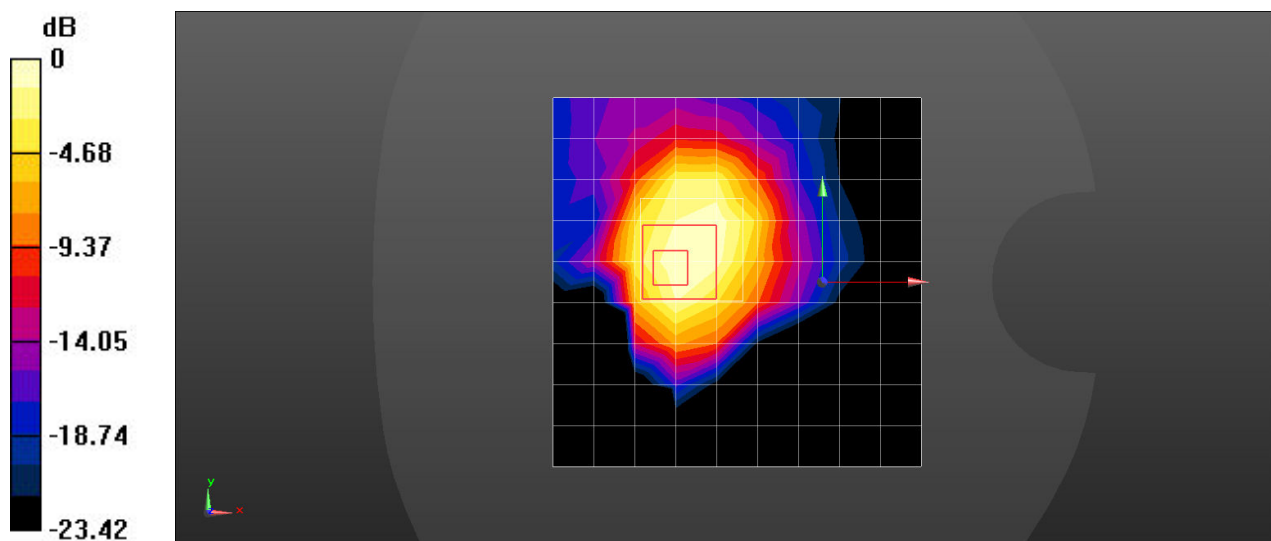
Peak SAR (extrapolated) = 0.517 W/kg

SAR(1 g) = 0.268 W/kg; SAR(10 g) = 0.142 W/kg

Smallest distance from peaks to all points 3 dB below = 11.3 mm

Ratio of SAR at M2 to SAR at M1 = 53.3%

Maximum value of SAR (measured) = 0.471 W/kg



Test Laboratory: SGS-SAR Lab

A2444 Bluetooth DH5 39CH Front side 10mm

DUT: A2444; Type: Watch;

Communication System: UID 0, Bluetooth (0); Frequency: 2441 MHz; Duty Cycle: 1:1

Medium: HSL2450; Medium parameters used: $f = 2441$
 kg/m^3

Phantom section: Flat Section

DASY 5 Configuration:

- Probe: EX3DV4 - SN7767; ConvF(8.03, 8.03, 8.03) @ 2441 MHz; Calibrated: 2024/12/31
- Sensor-Surface: 1.4mm (Mechanical Surface Detection)
- Electronics: DAE4 Sn867; Calibrated: 2024/12/31
- Phantom: Twin-SAM V5.0 (30deg probe tilt); Type: QD 000 P40 CD; Serial: 1609
- DASY52 52.10.4(1527); SEMCAD X 14.6.14(7483)

Configuration/Body/Area Scan (10x10x1): Measurement grid: $dx=12\text{mm}$, $dy=12\text{mm}$
Maximum value of SAR (measured) = 0.0647 W/kg

Configuration/Body/Zoom Scan (7x7x7)/Cube 0: Measurement grid: $dx=5\text{mm}$, $dy=5\text{mm}$,
 $dz=5\text{mm}$

Reference Value = 5.156 V/m ; Power Drift = -0.09 dB

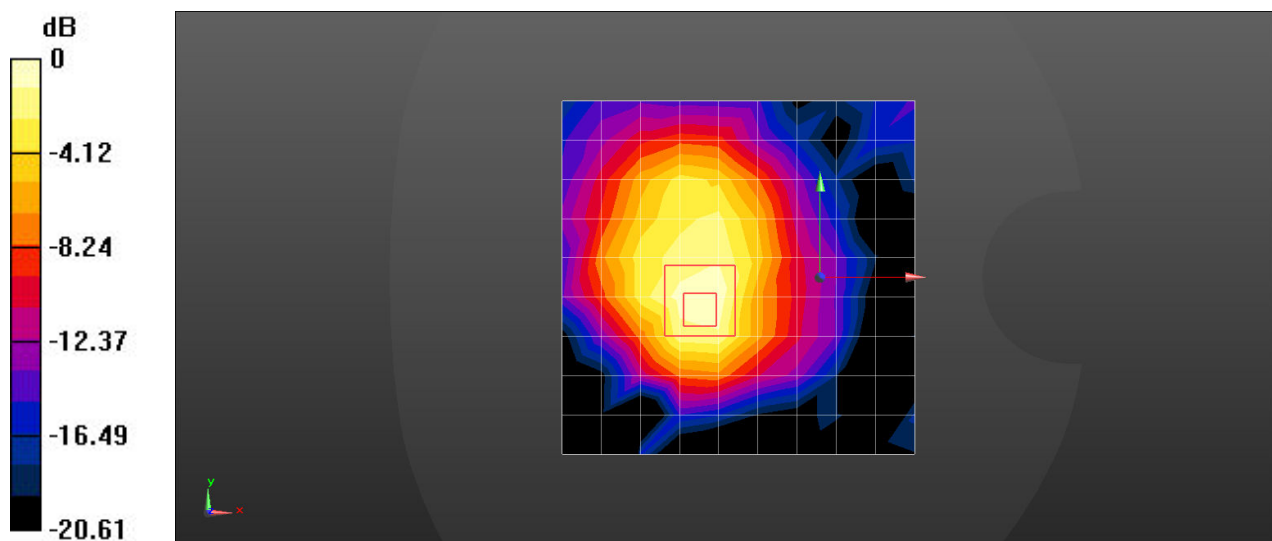
Peak SAR (extrapolated) = 0.0850 W/kg

SAR(1 g) = 0.049 W/kg ; SAR(10 g) = 0.026 W/kg

Smallest distance from peaks to all points 3 dB below = 8.4 mm

Ratio of SAR at M2 to SAR at M1 = 59.4%

Maximum value of SAR (measured) = 0.0716 W/kg



0 dB = 0.0716 W/kg = -11.45 dBW/kg

Test Laboratory: SGS-SAR Lab

A2444 Bluetooth DH5 39CH Back side 0mm

DUT: A2444; Type: Watch;

Communication System: UID 0, Bluetooth (0); Frequency: 2441 MHz; Duty Cycle: 1:1

Medium: HSL2450; Medium parameters used: $f = 2441$ MHz; $\sigma = 1.83$ S/m; $\epsilon_r = 40.054$; $\rho = 1000$ kg/m³

Phantom section: Flat Section

DASY 5 Configuration:

- Probe: EX3DV4 - SN7767; ConvF(8.03, 8.03, 8.03) @ 2441 MHz; Calibrated: 2024/12/31
- Sensor-Surface: 1.4mm (Mechanical Surface Detection)
- Electronics: DAE4 Sn867; Calibrated: 2024/12/31
- Phantom: Twin-SAM V5.0 (30deg probe tilt); Type: QD 000 P40 CD; Serial: 1609
- DASY52 52.10.4(1527); SEMCAD X 14.6.14(7483)

Configuration/Body/Area Scan (10x10x1): Measurement grid: dx=12mm, dy=12mm
Maximum value of SAR (measured) = 0.140 W/kg

Configuration/Body/Zoom Scan (7x7x7)/Cube 0: Measurement grid: dx=5mm, dy=5mm, dz=5mm

Reference Value = 3.759 V/m; Power Drift = -0.01 dB

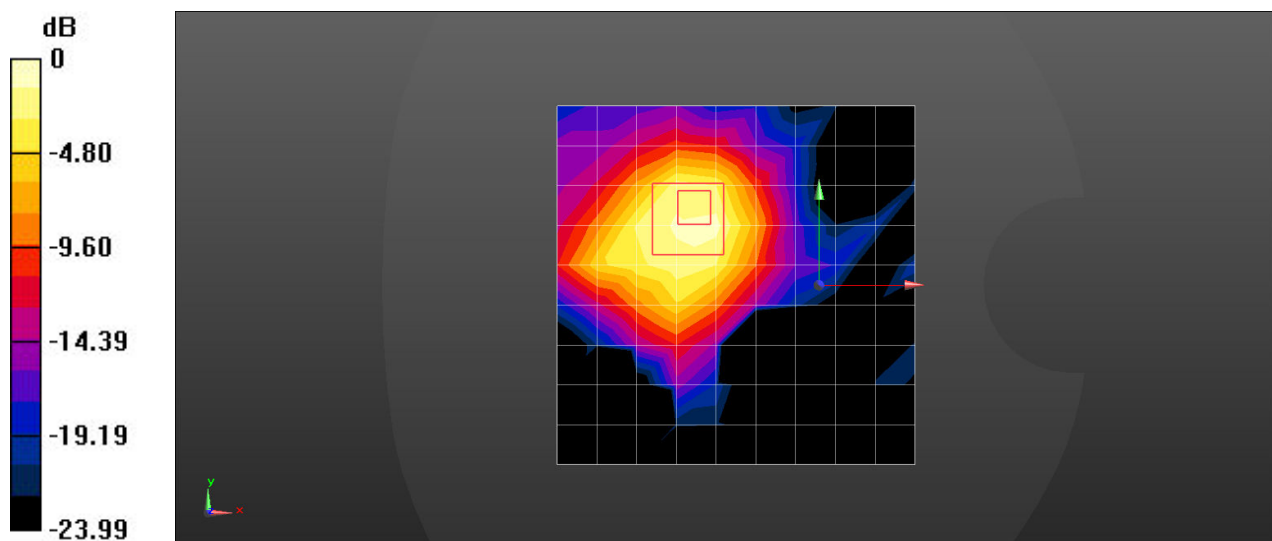
Peak SAR (extrapolated) = 0.220 W/kg

SAR(1 g) = 0.099 W/kg; SAR(10 g) = 0.047 W/kg

Smallest distance from peaks to all points 3 dB below = 8.5 mm

Ratio of SAR at M2 to SAR at M1 = 46.3%

Maximum value of SAR (measured) = 0.173 W/kg



0 dB = 0.173 W/kg = -7.62 dBW/kg



SGS-CSTC Standards Technical Services (Suzhou) Co., Ltd.

Report No.: SUCR250600059201

Rev.: 01

Page: 6 of 6

- End of the Appendix -