

## GETTING STARTED:

The OKIDOKEYS Smart-Reader allows you to lock and unlock your Smart-Lock using both cell-phones and smartphones without BLE (Bluetooth 4.0). When used, these phones will emit an audible tone that the Smart-Reader can use to unlock the Smart-Lock.

The Smart-Reader is also able to read OKIDOKEYS Smart-Tags to lock and unlock the Smart-Lock.

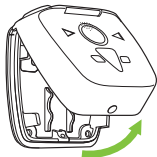
Your OKIDOKEYS Smart-Reader also includes a wireless bell using the Smart-Lock speaker to warn you when someone is at the door.

## SMART-READER INSTALLATION GUIDE

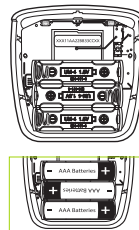
<b>PARTS LIST:</b>	1	(x3) AAA Batteries
	2	(x1) Smart-Reader
	3	(x1) T-10 (Torx) Screw
	4	(x1) T-10 (Torx) Screwdriver
	5	(Varies) Card
	6	(Varies) Wristband
	7	(Varies) Keychain

## INSTALLING YOUR SMART-READER

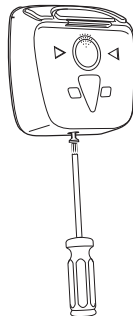
- 1** Remove the back from the Smart-Reader.



- 2** Take a picture or write down the 17-character serial number on the sticker in the battery compartment. This will be used to register your Smart-Reader online. Install the three AAA batteries.



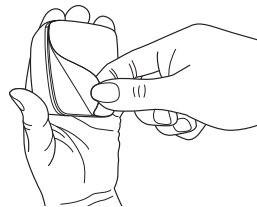
- 3** Insert and tighten the T-10 (Torx) screw from the bottom of the Smart-Reader cover.



- 4** Select a place near your door, not to exceed 10 ft from your Smart-Lock. Clean the area with a dry cloth.

Remove the film from the adhesive on the back of the Smart-Reader.

Press the Smart-Reader firmly to the surface you have selected.



- 5** The installation process is complete. You are now ready to register your Smart-Reader online.



- \*** The batteries in your Smart-Reader can be replaced by simply removing the T-10 screw and lifting the front of the Smart-Reader off.

Change the batteries and replace the Smart-Reader and T-10 screw.

**WARNING:** Your Smart-Reader includes a safety alarm to avoid external damages. You will need to unlock your Smart-Lock prior to opening the Smart-Reader to avoid triggering the alarm. If the alarm is triggered, use an authorized Smart-Key to stop the alarm.

## NEXT STEPS:

**SYNCHRONIZATION:** Before first use, you will need to initialize your Smart-Reader. Please check your Smart-Lock 'Setup and Use' documentation to proceed or visit [okidokeys.com](http://okidokeys.com)

Note : If you're already using an OKIDOKEYS Smart-Lock, you will need to do full reset before adding a new Smart-Reader:

On the web portal ([portal.okidokeys.com](http://portal.okidokeys.com)) :

- Find the «Edit the Smart-Lock» page by clicking on your door name on the dashboard.
- Go to the Advanced section and click on the «Reset the Smart-Lock» button

On your Smart-Lock :

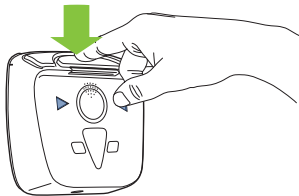
- Remove the cover
- Use the provided screw-driver and press the Reset button (under the left top hole) for 10 seconds



## Using your Smart-Reader with Smart-Tags

- 1 To activate the Smart-Reader, press the center button on top of the reader.

The blue lights on the front will begin blinking.



- 2 Hold the Smart-Tag to the Smart-Reader until you get a green light. The FIRST TIME you use it, the Smart-Tag **may take 3-4 seconds to read it.**

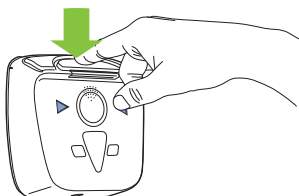
**Note:** Register your Smart-Tag in your Web Portal and assign it to a user and door.



## Using your Smart-Reader with a Phone

- 1 To activate the Smart-Reader, press the center button on top of the reader.

The blue lights on the front will begin blinking.



- 2 Use the app or dial the number from the SMS. Place the phone EARPIECE over the small holes on the face of the Smart-Reader.

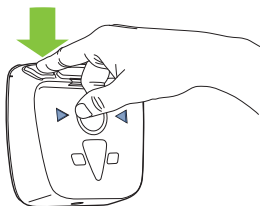
Wait for the blue light at the top of the Smart-reader to start flashing.



## Using your Smart-Reader Door Bell

- 1 To use the Smart-Reader door bell, press the button on either side on top of the reader.

The blue light on the top will begin blinking while it triggers the tone on the Smart-Lock.



## If you need further assistance, let us help.

You can find additional help and information at our OKIDOKEYS support forum at: [support.okidokeys.com](http://support.okidokeys.com)

For additional support, returns, or questions, please contact us through any of the following methods (all times are Eastern Standard Time)

Visit our website:

[www.okidokeys.com](http://www.okidokeys.com)

Call:

**888-853-2309 | Monday-Friday 8 a.m. to 8 p.m. | Saturday 10 a.m. to 4 p.m.**

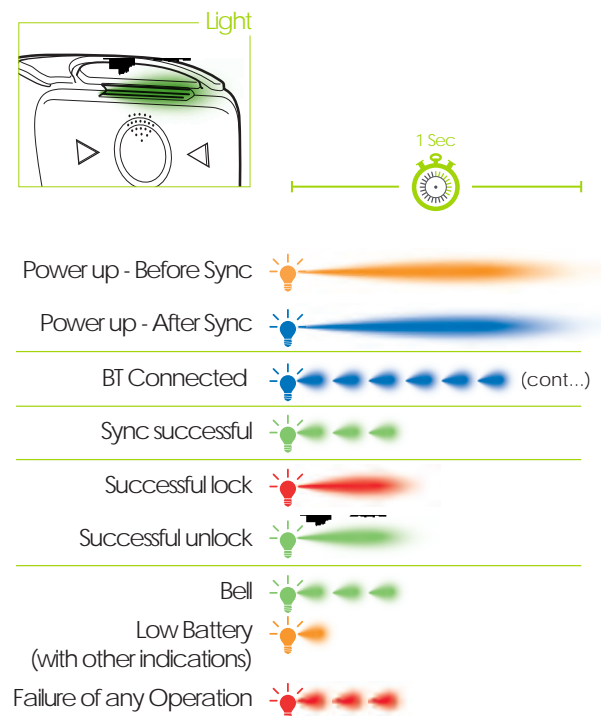
Email:

[support@okidokeys.com](mailto:support@okidokeys.com)

FCC Compliant

IC Compliant

## Smart-Reader Light Indications



## Tamper Alarm:

**NOTE:**

Please use the Smart-Reader top lights indication to confirm your Smart-Lock has completed the operation successfully

# CONFORMITY ASSESSMENT ISSUES

## FCC/IC Regulatory notices

### Modification statement

Practical House has not approved any changes or modifications to this device by the user. Any changes or modifications could void the user's authority to operate the equipment.

*Practical House n'approuve aucune modification apportée à l'appareil par l'utilisateur, quelle qu'en soit la nature. Tout changement ou modification peuvent annuler le droit d'utilisation de l'appareil par l'utilisateur.*

### Interference statement

This device complies with Part 15 of the FCC Rules and Industry Canada licence-exempt RSS standard(s). Operation is subject to the following two conditions: (1) this device may not cause interference, and (2) this device must accept any interference, including interference that may cause undesired operation of the device.

*Le présent appareil est conforme aux CNR d'Industrie Canada applicables aux appareils radio exempts de licence. L'exploitation est autorisée aux deux conditions suivantes : (1) l'appareil ne doit pas produire de brouillage, et (2) l'utilisateur de l'appareil doit accepter tout brouillage radioélectrique subi, même si le brouillage est susceptible d'en compromettre le fonctionnement.*

### Wireless notice

This device complies with FCC/IC radiation exposure limits set forth for an uncontrolled environment and meets the FCC radio frequency (RF) Exposure Guidelines and RSS-102 of the IC radio frequency (RF) Exposure rules. This transmitter must not be co-located or operating in conjunction with any other antenna or transmitter.

*Le présent appareil est conforme à l'exposition aux radiations FCC / IC définies pour un environnement non contrôlé et répond aux directives d'exposition de la fréquence de la FCC radiofréquence (RF) et RSS-102 de la fréquence radio (RF) IC règles d'exposition. L'émetteur ne doit pas être colocalisé ni fonctionner conjointement avec à autre antenne ou autre émetteur.*

### FCC Class B digital device notice

This equipment has been tested and found to comply with the limits for a Class B digital device, pursuant to part 15 of the FCC Rules. These limits are designed to provide reasonable protection against harmful interference in a residential installation. This equipment generates, uses and can radiate radio frequency energy and, if not installed and used in accordance with the instructions, may cause harmful interference to radio communications. However, there is no guarantee that interference will not occur in a particular installation. If this equipment does cause harmful interference to radio or television reception, which can be determined by turning the equipment off and on, the user is encouraged to try to correct the interference by one or more of the following measures:

- Reorient or relocate the receiving antenna.
- Increase the separation between the equipment and receiver.
- Connect the equipment into an outlet on a circuit different from that to which the receiver is connected.
- Consult the dealer or an experienced radio/TV technician for help.

### CAN ICES-3 (B) / NMB-3 (B)

This Class B digital apparatus complies with Canadian ICES-003.

*Cet appareil numérique de classe B est conforme à la norme canadienne ICES-003.*