

Instruction manual

VERSION 1.0

Thank you for purchasing our IP Camera. Easy to install and easy to use, its advanced design and features makes it as a perfect device to record and monitor by a smart and innovative way. This model can be used at home, office, shops or even as a baby monitor thanks to its powerful functions.

Before using this product, please read below instructions carefully.

Note

1. Use Occasions: Please make sure the usage of this device is legal wherever you are located.
2. Use Environment: Do not use the product in a humid and a high temperature environment. The device does not have a waterproof and high temperature resistance function. To clean the device, please use a clean and wet cloth, do not use any chemical product.
3. Cleaning Requirements: Please do not use it in a dusty environment, in order to avoid any damage on the lenses and other components which can affect the recording option.
Lens cleaning : Please use a clean cloth and wipe the lens with precautions.

FCC STATEMENT

1. This device complies with Part 15 of the FCC Rules. Operation is subject to the following two conditions:
(1) This device may not cause harmful interference.

- (2) This device must accept any interference received, including interference that may cause undesired operation.

2. Changes or modifications not expressly approved by the party responsible for compliance could void the user's authority to operate the equipment.

NOTE: This equipment has been tested and found to comply with the limits for a Class B digital device, pursuant to Part 15 of the FCC Rules. These limits are designed to provide reasonable protection against harmful interference in a residential installation.

This equipment generates uses and can radiate radio frequency energy and, if not installed and used in accordance with the instructions, may cause harmful interference to radio communications. However, there is no guarantee that interference will not occur in a particular installation. If this equipment does cause harmful interference to radio or television reception, which can be determined by turning the equipment off and on, the user is encouraged to try to correct the interference by one or more of the following measures:

Reorient or relocate the receiving antenna.

Increase the separation between the equipment and receiver.

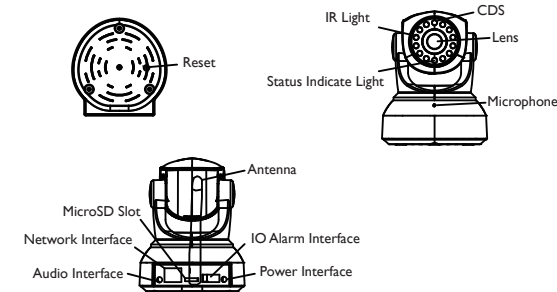
Connect the equipment into an outlet on a circuit different from that to which the receiver is connected.

Consult the dealer or an experienced radio/TV technician for help.

FCC Radiation Exposure Statement

This equipment complies with FCC radiation exposure limits set forth for an uncontrolled environment. This equipment should be installed and operated with minimum distance 20cm between the radiator & your body

Appearance introduce



How to connect

Please connect the IP camera and router via a LAN network cable.

And make sure that the Power indicator light of the router is on (yellow) and the Network Indicator light is flashing (green).

Note: The IP camera can be reset to factory settings by pressing the reset button for 10 seconds. The reset button can be found at the bottom of the camera.

Accessories

Power Charger / Data CD / Bracket / Quick setup guider

Setup Guide

IP Cam wizard is a setup guide for the IP Camera which will explain how to link the device to a wireless connection, how to search the IP Camera in a local area network, and to set the Wifi username and password. All details will be explained step by step.

Android Client for Use

1. Download and install the client software:

- 1.1 Scan the QR Code ,download and install
- 1.2 Search"YIPC"on Google Play, download and install
- 1.3 Login the data CD and download "YIPC" to the Android device, App can be installed



2.Add Devices

There are two ways to add devices, operation is as follows:

- 2.1 Login YIPC software, click on(Figure 1)shows the "Please click here to add a camera", upon clicking the camera window will pop up(Figure 2). In the "Device ID" text box, enter the UID or click "Scan QR code" scan input operation, In the "User" text box enter the user name, In the "Password" text box enter the password.

- 2.2 Click on(Figure 2), "Search", Android client software will search for the LAN cameras automatically.

Camera default username: admin, password: 12345.

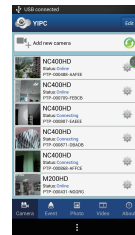


Figure 1

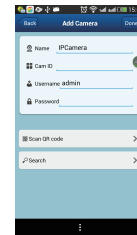


Figure 2

Apple Client for Use

1. Download and install the applications on IOS device.
Search"YIPC" in App Store ,download and install

2.Add Devices

There are two ways to add devices, operation is as follows:

- 2.1 Login YIPC software, click on(Figure 3)shows the "Please click here to add a camera", upon clicking the camera window will pop up(Figure 2). In the "Device ID" text box, enter the UID or click "Scan QR code" scan input operation, In the "User" text box enter the user name, In the "Password" text box enter the password.

- 2.2 Click on(Figure 4), "Search", Android client software will search for the LAN cameras automatically .

Camera default username: admin, password: 12345.

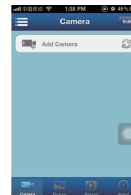


Figure 3

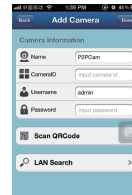


Figure 4

PC Client for Use

1. Download and install IP Camera WMS
Login the data CD and download "IP Camera WMS" to the device, Software can be installed

2.Add device

Start IP Camera WMS, click the "add Camera". Open the "Add Camera" windows to add the device. There are two ways to add devices:

- 2.1 In the "Add Camera" window, click "Find" and search LAN access cameras. Then select the desired device, click the "ok";
- 2.2 In the "Add Camera" window, directly type "UID" and "Password". then click "OK".

4. Double-click on the camera list and view the monitor screen.

Remark: After the device starts to work, please revise your password in time. We company won't bear any responsibility of the loss caused by account and password stolen