

Cubitt 



USER MANUAL

teens 3

SMARTWATCH

Please read the manual before use.

- ◆ **The information in this document won't be modified or extended in accordance with any notice.**
- ◆ **The watch should be charging 3 hours at least before use.**

1. Caution:

1.1 Waterproof and dustproof

The watch supports waterproof and dustproof. Please follow below guidelines to maintain the waterproof and dustproof function.

Otherwise your device might be damaged.

- Do not use watch under the strong pressure water.
- Do not use watch when diving, snorkeling or other sports in turbulent water.
- Please dry your hands or watch fully before operating.
- If the watch is exposed to water, please dry it fully with soft cloth.

If it is exposed to other liquids (such as salt water, pool water, soapy water, oil, perfume, sunscreen, hand sanitizer) or chemicals (such as cosmetics), please wash it with clean water and dry it fully with soft cloth. Do not follow these instructions may damage its performance and appearance.

- If the watch is dropped or hit, the waterproof and dustproof function may be damaged.

- Do not disassemble your watch. The waterproof and dustproof function may be damaged.
- Do not use watch in extremely high or low temperature environments.
- Do not use blowers and other heated equipment to dry the watch.
- In sauna room, the waterproof function may be damaged.

1.2 Cleaning and management of Cubitt Teens3

Follow the below points to ensure that Cubitt Teens3 is operating normally and looks good. Otherwise, maybe damage Cubitt Teens3 and cause skin irritation.

- Protect watch from dust, sweat, ink, oil and chemical products (such as cosmetics, antibacterial sprays, hand sanitizers, detergents, and insecticides). Otherwise, the internal and external parts may be damaged or causes performance degradation. If Cubitt Teens3 is stained with above substances, please clean it with lint-free soft cloth.
- When cleaning Cubitt Teens3, do not use soap, detergent, abrasive materials, compressed air, ultrasonic waves or external heat sources. Otherwise, Cubitt Teens3 may be damaged. Soap, detergent, hand sanitizer, or detergent residue may cause skin irritation.
- After exercising or sweating, please clean your wrist and strap. Use water to clean Cubitt Teens3 and dip a small amount of alcohol to wipe, then dry it thoroughly.

- If Cubitt Teens3 is stained or infiltrated with other objects, please use wet soft toothbrush to clean it.

1.3 If you are allergic to material on Cubitt Teens3, please pay attention when using

- Manufacturer conducted testing about hazardous materials on Cubitt Teens3 by internal and external certification agency, including testing of all materials contact skin, skin toxicity testing, and wearing testing.
- Cubitt Teens3 contains nickel. If your skin is very sensitive or you are allergic to the materials on Cubitt Teens3, please take necessary precautions.
 - Nickel: Cubitt Teens3 contains a small amount of nickel. The content is lower than the reference value of European REACH regulations. You will not be exposed to the nickel in Cubitt Teens3 and our device has passed the international certification test. However, if you are allergic to nickel, please use Cubitt Teens3 with caution.
- All materials used on Cubitt Teens3 comply with relevant inspection standards such as REACH and RoHS.

2. Product specification

Model	Cubitt Teens3
CPU	RTL8763EWE-VP
ARM	Cortex-M0 90MHz
Memory	RAM 578KB + ROM 256Mb
Full touch screen	1.85" Amoled 390*450 big screen 2.5D glass
Bluetooth version	5.0
Battery	Voltage 3.8V/350mAh
Function	IP68 waterproof, Games, Phone call, Heart Rate, Sleep, Daily activity, Sports tracking, Stylish Dials Push, DIY favorite dial customized, 7 days weather forecast, Notification (Ins/Facebook/Skype/WhatsApp etc.), 2 operations styles choose
Other features	Timer, Do not disturb mode, Screen lock, Alarms, Battery saving mode, multi-Languages supported, changeable strap

3. Product details

3.1 Charge your watch



Connect and charge the watch according to the picture. It needs to be charged to activate the watch when it is started for the first time.

Notice: Do not use a charger exceeding 5V 2A for charging.


3.2 Operate your watch



(1) Power on: When the watch is Off status, press and hold the power button for 5 seconds to turn it on. The home screen of the watch will be displayed after booting.

(2) Touch screen operation: From the home screen, swipe to the right to the menu screen, then tap the function icon to enter the corresponding sub-menu.

(3) Wake up screen: When the watch screen is Off status, you can press the power button to wake up the screen. If the Gesture control button is turned on in the App, you can also wake up the screen by turning the wrist.

(4) Shutdown: Hold the power button for 5 seconds to turn it off or Click the Setting icon, click System - Shut down, click  to shut down.

3.3 Replace the strap



Remove the strap from the watch by sliding the quick release on the strap.

4. Product main screens

4.1 Product main screens

(1) Long press the main interface(watch face) to enter the home page thumbnail(watch face list). You can view it left to right, click touch to change dial and back to main interface.

(2) Swipe to the right: Display function list -> Phone call, Frequent contacts, Call records, Daily activity, etc.. Swipe up and down to navigate the list, and tap a function to select.

(3) Swipe down: Display Battery level, Bluetooth connection status, Call connection status, Time, Games, Alarms, Do not disturb mode, Brightness, System version, Setting, Call, Sports, Flashlight, Timer, Habits, Prizes shortcut icons.



(4) Swipe up: Message notifications.

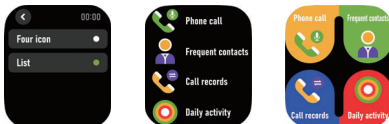
(5) Swipe to the left: Display Daily activity, Heart rate, Blood oxygen, Sleep, Weather, Music. Also you can add other functions in this interface.



Setting Menu style method:

You can choose the Menu style from menu Setting > Choose style:

Four icon or List.



4.2 Watch face Display





Setting method:

When the watch in main interface(watch face), please long press on the main interface and set different dials if you like or can go Setting - Screen display - Change dial to choose dials too.



4.3 Screen lock

Setting path: in the App "Personal center" - "Screen lock". You can turn on the Screen lock or Games lock after setting a password to prevent your children from overusing. If the Screen lock is turned on, a password is required when using the watch.



5. Product quick use

5.1 Download and install App

You can set up the watch through the "Cubitt Jr+Teens" App for iOS or Android devices. You need download and install the "Cubitt Jr+Teens" App from App Store or Google Play Store:



Or you can scan the right QR code on the watch/giftbox/user manual to download the app:



Android+IOS

For quickly binding the APP on the watch directly, you can see below connection instruction :

There are 2 different connection states:

The first one: Directly scan the QR code and download the APP, and then connect successfully.



The second one: After 20 seconds, if no connected, will display "skip" button to allow skip, you can choose to scan the QR code and download the APP, then connect successfully. Or you can choose to click " skip" and there will be a close reminder to remind users to connect to the APP to better experience the multi-function of the watch. If the user does not want to connect, will jump to the page of the watchface.



5.2 Connection and Synchronize data

Turn on the Bluetooth and GPS on your mobile phone.

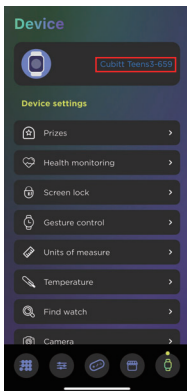
5.2.1 Bluetooth connection

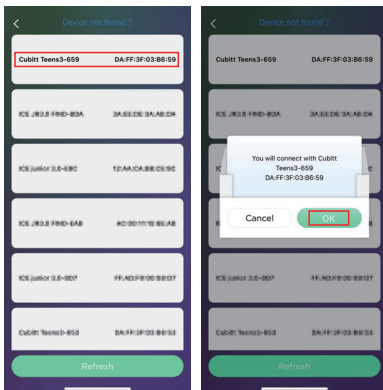
(1) Install and open "Cubitt Jr+Teens" App.

(2) In the home page, press "Personal center" - "Device" menu to Searching for nearby devices page.

(3) Press "More" to searching device, select product mode LiteT3 and click "OK" to bind watch as below.

In "Setting" menu on the watch - find "System" - "System version" to check the watch Bluetooth name.



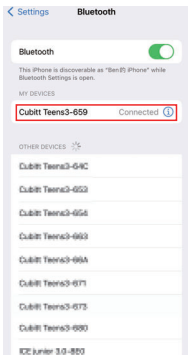
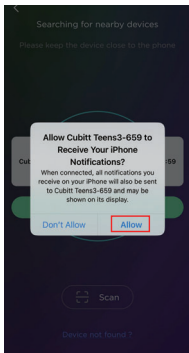
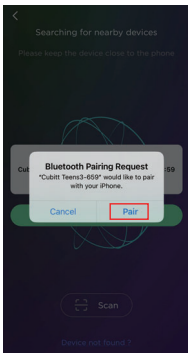


After connected successfully, shown as the icon in the watch status



Notice:

* If your phone is iOS system, you need agree to pair with you phone and display your iPhone notifications. The Bluetooth menu of the phone interface displays LiteT3 connected successfully as below picture shows.

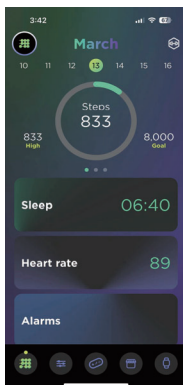


* During binding process, "Cubitt Jr+Teens" will prompt you to enable GPS and Bluetooth, and authorize "Cubitt Jr+Teens" to get access to the GPS on you mobile phone. Or prompt some other permission to allow, please agree to all the permission prompt.

* iPhone will not prompt you with any information unless you complete Bluetooth pairing on your Cubitt Teens3 watch in the built-in Bluetooth in you mobile phone after binding.

5.2.2 Synchronizing data

Pair your watch with "Cubitt Jr+Teens" App, open App, in the home page screen, swipe down to synchronize data. Your data will be shown on App accordingly.



Notice:

- * Wrong operation: Pair the watch directly with the Bluetooth in your mobile phone's settings.
- * Please don't shut the Bluetooth notify service when you are clearing software by background or close background application software. It will affect the sync function between watch and phone if shut it.
- * If you want your watch to receive third-party notifications, you need to turn on the notification permissions.

5.3 Basic functions

5.3.1 Phone call

This function needs to be connected to audio Bluetooth. When entering the dial, you can enter the phone number as needed, and then dial; long press 7 and 9 on the keyboard for 2s to enter * and #.

5.3.2 Frequent contacts

You need to add them in the frequently used contacts column on the App side. The frequently set contacts will be automatically synced to the device, and up to 10 contacts can be added.

5.3.3 Call records

This function can save the last 10 call records.

5.3.4 Daily activity

The watch will display the user's total number of steps on the day, walking distance, calories burned on the same day, and the data will

be cleared at 0 o'clock (midnight) every day.

5.3.5 Games

There are 8 games in the watch which are fun and you can choose one to play. You can also download games through the "Cubitt Jr + Teens" App.

5.3.6 Alarms

You can add alarms in the watch. Also you can set alarms in the App, the watch will show the alarms information. When the alarm time is up, the watch will pop up a reminder icon. In the App alarms setting, if you allow to operate the alarms On/Off in watch, you can also open or close it in the watch. And you can edit or delete the alarms from the watch or APP.

5.3.7 Sports

In sports mode: the single-point function icon allows you to enter sports modes such as Walking, Running, Indoor run, Treadmill, Hiking, Cycling, Cricket, Football, Basketball, Tennis, Baseball, Badminton, Elliptical, Rowing machine, Yoga, Fitness, Rope skipping, Spinning, HIIT and Free sports.

5.3.8 Sports record

If you have done any sports and saved, in this function will show the information of sports record.

5.3.9 Heart rate

(1) Function introduction: The watch will measure the user's heart rate under the heart rate measurement interface. After the test is completed, the vibration will display the result. After no operation, the screen will automatically go out.

(2) Operating instructions: Swipe to the right on the main interface and click the heart rate static icon to switch to the heart rate measurement interface. Once the interface is entered, the measurement will start. During the measurement, the interface value will be zero. After the measurement is completed, the value will be displayed.

5.3.10 Sleep

(1) Function introduction: The watch will display the user's sleep time the night before. (Sleep measurement time 21:30 - 12:00 next day)

(2) Operation instructions: Swipe to the left on the main interface, click sleep static icon to switch to the sleep interface, you can view the sleep time of the previous day.

5.3.11 Date&time

You can set the time, set the date, choose the time display mode.

5.3.12 Weather

After connected with App, the watch will show local weather information.

5.3.13 Blood oxygen

Switch to the blood oxygen interface , once you enter the blood oxygen interface , the bracelet start measuring blood oxygen, during the measurement process (for about 30s).

5.3.14 Habits

You can set sleep, exercise, learning habits or other custom habits in the App, the watch will show the habits information. When the habit time is up, the watch will pop up a reminder icon, let you develop good habits.

5.3.15 Prizes

You can earn medals by completing different tasks. When you earn enough medals, you can integrate them into a special medal dial and set as your watch face.

5.3.16 Message

When connected to Bluetooth, notifications from your phone will be sent to your watch. (You need to open the push switch in the App in advance)

5.3.17 Timer

Switch to the timer interface, click to start timing. During the timing, you can start/pause/reset switching with a single touch.

Switch to the stopwatch interface, you can choose 1min, 5min, 10min, or set any time you want to use countdown function. You can start/

pause/reset switching with a single touch.

5.3.18 Calculator

The numerical input is in the upper limit of 7 digits (input of negative numbers is not processed), and the result of the calculation is within the upper limit of 8 digits. If the result exceeds the calculated value, it will be displayed with "-----" that cannot be calculated.

5.3.19 Music

After connected with the Bluetooth, you can manipulate Mobile to play music and adjust the volume, voice will come out from mobile phone.

5.3.20 Setting

- **Language:** Including different languages you can choose.
- **Screen display:** Including Change dial, Brightness, Screen time, Turn wrist wake, AOD clock setting.
- **Vibration&Ring:** Set Mode and Vibration intensity.
- **Choose style:** Choose menu style for Four icon or List.
- **Do not disturb:** Set enter or exit do not disturb mode.
- **Health monitoring:** Set to turn on or off automatic health monitoring.
- **Unit setting:** Set units or temperature unit.
- **Date:** Set the date.
- **Time:** Set the time and choose the time display mode.

- **Battery:** Show the battery power, set Power saving mode. When you open it, the watch Bluetooth will be disconnected.
- **Drink water:** Set drink water reminder.
- **Sedentary:** Set sedentary reminder.
- **Left hand or right hand:** Set to wear on the left or right hand.
- **Find phone:** When you connect your phone, the phone vibrates and rings when you click the Find Phone icon.
- **System:** Including System version, QR code, Shut down, Reset, settings.

6. Caveat

Please note that Cubitt smartwatches are not intended for medical purposes. While they offer various features and functionalities that can enhance your everyday life and promote an active lifestyle, they should not be relied upon as medical devices. If you have any specific health concerns or require medical monitoring, we recommend consulting with a healthcare professional.

7. FCC Statement

This equipment has been tested and found to comply with the limits for a Class B digital device, pursuant to part 15 of the FCC Rules. These limits are designed to provide reasonable protection against harmful interference in a residential installation. This equipment generates, uses and can radiate radio frequency energy and, if not installed and

used in accordance with the instructions, may cause harmful interference to radio communications. However, there is no guarantee that interference will not occur in a particular installation. If this equipment does cause harmful interference to radio or television reception, which can be determined by turning the equipment off and on, the user is encouraged to try to correct the interference by one or more of the following measures:

- Reorient or relocate the receiving antenna.
- Increase the separation between the equipment and receiver.
- Connect the equipment into an outlet on a circuit different from that to which the receiver is connected.
- Consult the dealer or an experienced radio/TV technician for help.

Caution: Any changes or modifications to this device not explicitly approved by manufacturer could void your authority to operate this equipment.

This device complies with part 15 of the FCC Rules. Operation is subject to the following two conditions: (1) This device may not cause harmful interference, and (2) this device must accept any interference received, including interference that may cause undesired operation.

RF Exposure Information

The device has been evaluated to meet general RF exposure requirement.

The device can be used in 0mm exposure condition, compliance with exposure requirements.

Only in the stated conditions, the device is shown to fully comply with the FCC RF Exposure requirements of KDB 447498.

Cubitt 



MANUAL DE USUARIO

teens 3

SMARTWATCH

Lea el manual antes de usar.

- ◆ **La información contenida en este documento no será modificada ni ampliada de acuerdo con ningún aviso.**
- ◆ **El reloj debe cargarse durante al menos 3 horas antes de usarlo .**

1. Precaución :

1.1 Resistente al agua y al polvo

El reloj es resistente al agua y al polvo. Siga las instrucciones a continuación para mantenerlo. De lo contrario, su dispositivo podría dañarse.

- No utilice el reloj bajo agua a fuerte presión.
- No utilice el reloj mientras bucea, practica snorkel o practica otros deportes en aguas turbulentas.
- Séquese bien las manos o mire el reloj antes de utilizarlo.

Si el reloj entra en contacto con el agua, séquelo completamente con un paño suave. Si entra en contacto con otros líquidos (como agua salada, agua de piscina, agua jabonosa, aceite, perfume, protector solar, desinfectante de manos) o productos químicos (como cosméticos), lávelo con agua limpia y séquelo completamente con un paño suave. No seguir estas instrucciones podría dañar su funcionamiento y apariencia.