

P4 / User's Manual (English)

From **now on**,
enjoy the time **filled with**
best music brought to you
 by **CELIA & PERAH !**



Are you ready for wireless Hi-Fi?

Thank you for buying our product, we are aim to provide you great sound quality with convenient. This manual will help you to enjoy best music in your every joyful day.

Hand craft and Bent Wood

Made of 8 layers of Michelia wood and 1 layer of Beech wood, formed by high temperature and intensive pressure, P4 is a bentwood speaker offering elegant curves and strong presence. It's made for audiophiles who appreciate rich, solid and warm sound out of natural wood while embracing the-state-of-the-art wireless technology. Each P4 is a unique presentation of hand craftsmanship.

Squeeze Box Technology

P4's unique design creates maximum acoustic volume with very limited internal space. Thanks to CELIA & PERAH's professional tuning technology, this compact speaker has much to offer than just solid bass and powerful sound.

Live Concert Technology

With CELIA & PERAH exclusive acoustic technology, unique configuration of 5 monomers of different function, and high performance 3D sound processor, P4 has been designed to radiate sound in all directions, creating more natural sound replication in all ranges. The effect is a "right there" feeling-- you can close your eyes and easily imagine yourself in the studio or concert hall.

aptX®

aptX® has been the best kept secret of the professional audio industry for many years. Now music lovers can enjoy the rich listening experience that only aptX® can deliver: pure wireless sound that doesn't compromise on audio quality. This P4 is an aptX® enabled device. Now sit back, relax, and enjoy the surreal wireless sound.

Hand Craft Bent Wood + Creative Acoustic Design + Advance Wireless Technology = Your P4 !

In the Box

P4 speaker \ AC adaptor \ Power Cord \ Strap \ User's Manual

Control Panel

- 1. Power/Pairing :** Long press - Toggle power on and off.
Short Press - From standby to pairing mode.
- 2. LED Blue :** Flash - Standby.
Quick Flash - Pairing mode.
Steady on- Bluetooth connected.

LED Red : Steady on - Charging (Automatic turn off while full charged).

* It shows purple while blue and red LED light up simultaneously.

- 3. Vol +/- :** Adjust volume level.
- 4. AUX :** Aux-in with Ø3.5mm audio cable (not supplied).
- 5. 5V OUT :** While your P4 with AC adaptor connected, you are able to connect to your smart phone for charging.
- 6. DC IN :** Charging you P4 by AC adaptor.

* Reset : Continuously press "Power/Pairing" and "VOL +" buttons simultaneously for 15 seconds to perform system reset. Should not release within 15 seconds, it might cause abnormal sound, if it happens, do reset again and ensure press for 15 seconds.

Operate your P4

1. Charging internal Li-ion battery

For very first time you use your P4 please full charge it by connect AC adaptor to DC-in jack.

2. Power on

Press "Power/Pairing" to toggle on/off your P4.

3. Pairing mode

To enter pairing mode, you have to short press "Power/Pairing" button while device on.

* P4 will automatic into pairing mode if you first time use your device or paired Bluetooth device not found.

Make Bluetooth wireless connection

A: pairing and connect to your Bluetooth device

1. Turn on P4.
2. Set Bluetooth of your Bluetooth device to on.
3. Set P4 to pairing mode, the P4 will indicate blue LED flash, if it not in this status, short press "Power/Pairing" button to enter pairing mode.
4. Perform the pairing procedure on the Bluetooth device to detect system.
5. Select "C&P Audio P4" on your Bluetooth device.
6. If passcode is require on your Bluetooth device, input "0000".

B: Connect to paired Bluetooth device

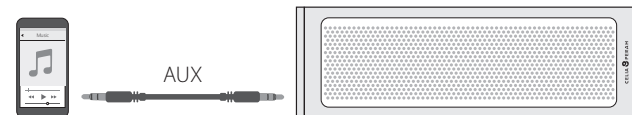
1. Turn on P4.
 2. Set Bluetooth of your Bluetooth device to on.
 3. Select "C&P Audio P4" on your Bluetooth device.
- *For some Bluetooth Device, it will automatically connect.
 *If the connect cannot be made, delete "C&P Audio P4" on you Bluetooth device and perform pairing again.

C: Connect by one touch NFC

1. Turn on P4.
2. Ensure NFC function enabled of your smartphone.
3. Touch your smartphone with P4 NFC logo.

Make connection with 3.5mm audio cable (not supplied)

1. Turn on your P4.
 2. Connect to your audio device with 3.5mm audio cable.
- *Bluetooth connection has the priority, if Bluetooth device connected and playing, system will stick on Bluetooth connection. And you have to turn-off or disconnect your Bluetooth device. For some devices; system will switch to Aux-in after few seconds of stop playing via Bluetooth.



Sweet Functions

Charging your smart by P4 : While P4 has AC power supplied, you are able to charging your P4 via your smart phone USB cable.

NFC (Near field communication) : P4 build-in NFC tag supplied NFC Bluetooth one touch connection.

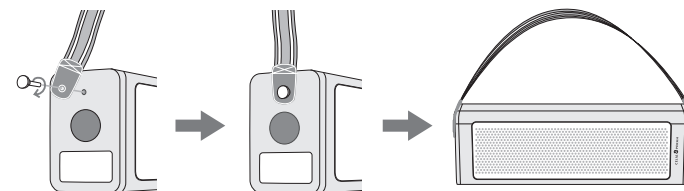
*We are not recommending you to modify your NFC tag of P4, only if you are the expert of it.

8hrs Battery operating : Build-in Li-ion battery support 8hrs continuously operation, the battery life will depends on how loud and what kind of music you listen to.

Stylish Strap : Beautiful cotton strap. P4 is easy to carry around.

Install Strap

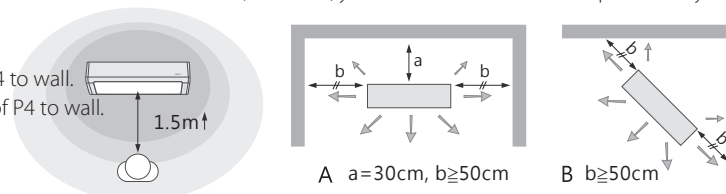
Counterclockwise the screw of side of P4, connect to your strap, and clockwise tie the screw, and you are able to bring P4 everywhere easier.



Best Position

P4's acoustic design can against most of the environment; however, you can have better listen experience by the instructions below.

1. Put P4 as high as your ears.
2. 30cm far from the back of P4 to wall.
3. At least 50cm far from side of P4 to wall.



Problem solving

Cannot make Bluetooth connection with P4.

- * If passcode code is require on your Bluetooth device, input "0000".
- * P4 will auto research and connect to last Bluetooth device, if the blue LED indicate not flashed, short press "Power/Pairing" button to enter pairing mode.
- *If there has another device has connected to p4, you are not able to interrupt.
- *Remove "C&P Audio P4" from your Bluetooth device and perform pairing procedure again.
- *Reboot your P4 and your Bluetooth device.
- *Reset your P4 b y instruction of control of this manual.

Not loud enough or too loud.

*The volume of Bluetooth and Aux-in were separated, you are able to volume up or down by "Vol +" and "Vol -" buttons for different mode.

Can I modify NFC tag of P4?

* We are not recommending you to do so, we are not warranty the modified tags.

Specifications

Acoustic Technology

C&P Audio | Squeeze Box
 C&P Audio | Live Concert
 CSR | aptX®

Acoustic Performance

Dynamic Range : 40~20000 Hz
 Max. Output : 99.72 dB@ 1m

Drivers Units

Full Range- 4"15W X2
 Passive Radiator- 4" X1
 Tweeter- 2"20W X2

Bluetooth®

4.0
 Communication Distance : 10m
 (@open area)

AC Power Source : 100~240V AC

DC : 19V 2A

Amplifier : 25 Watt

5V Charging : 5V 2 A

Dimensions : 440 x 141 x 96 mm

Weight : 2.6 Kg

Important Safety Instructions

CAUTION: NO USER-SERVICEABLE PARTS INSIDE. REFER SERVICING TO QUALIFIED PERSONNEL.

1. Read these instructions.
2. Keep these instructions.
3. Heed all warning.
4. Follow all instructions.
5. Do not use this speaker near water.
6. Clean only with dry cloth.
7. Do not block any ventilation openings. Install in accordance with the manufacturer's instructions.
8. Do not install near any heat sources such as radiators, heat registers, stoves, or other speaker(including amplifier) that produce heat.
9. Do not expose this speaker to extremely high or low temperatures.
10. Do not place this speaker in direct sunlight or place it in high temperature car for long periods. This may cause malfunction.
11. Do not attempt to replace or remove this speaker's battery. You may damage the device.
12. Please use the original supplied charger, other chargers may look similar, but may cause electric shock, or the different voltage output could damage the product.
13. Do not defeat the safety purpose of the polarized or grounding-type plug. A polarized plug has two blades with one wider than the other. A grounding type plug has two blades and a third grounding prong. The wide blade or the third prong are provided for your safety. If the provided plug does not fit into your outlet, consult an electrician for replacement of the obsolete outlet.
14. Protect the power cord from being walked on or pinched particularly at plugs, convenience receptacles, and the point where they exit from the speaker.
15. Only use attachments / accessories specified by the manufacturer.
16. Use only with the cart, stand, tripod, bracket, or table specified by the manufacturer, or sold with the speaker. When a cart is used, use caution when moving the cart/ speaker combination to avoid injury from tip-over.
17. Unplug this speaker during lighting storms or when unused for long periods of time.
18. Connect only to the proper mains voltage.
19. To completely disconnect this speaker from the AC Mains, disconnect the power supply cord plug from the AC receptacle.
20. Do not expose this speaker to dripping or splashing and ensure that no objects filled with liquids, such as vases, are placed on the speaker.
21. When lifting the speaker ensure the base is supported, or using the strap.
22. Ensure the surface for placement is secure and will support the weight of the product.
23. Refer all servicing to qualified service personnel. Servicing is required when the speaker has been damaged in any way, such as power-supply cord or plug is damaged, liquid has been spilled or objects have fallen into the speaker, the speaker has been exposed to rain or moisture, does not operate normally, or has been dropped.
24. Loudspeaker drive units produce stray magnetic fields. Do not place any article that may be damaged by such a magnetic field (audio and video tapes, credit and other swipe cards and the like) within 0.5m (2 feet) of the apparatus.

FCC statement in User's Manual (for class B)

"Federal Communications Commission (FCC) Statement

This Equipment has been tested and found to comply with the limits for a class B digital device, pursuant to Part 15 of the FCC rules. These limits are designed to provide reasonable protection against harmful interference in a residential installation. This equipment generates, uses and can radiate radio frequency energy and, if not installed and used in accordance with the instructions, may cause harmful interference to radio communications. However, there is no guarantee that interference will not occur in a particular installation. If this equipment does cause harmful interference to radio or television reception, which can be determined by turning the equipment off and on, the user is encouraged to try to correct the interference by one or more of the following measures:

- Reorient or relocate the receiving antenna.
- Increase the separation between the equipment and receiver.
- Connect the equipment into an outlet on a circuit different from that to which the receiver is connected.
- Consult the dealer or an experienced radio/TV technician for help.

FCC Caution:

1. This device complies with Part 15 of the FCC rules. Operation is subject to the following two conditions:
 - (1) This device may not cause harmful interference, and
 - (2) This device must accept any interference received, including interference that may cause undesired operation.
2. This device and its antenna(s) must not be co-located or operating in conjunction with any other antenna or transmitter.
3. Changes or modifications to this unit not expressly approved by the party responsible for compliance could void the user authority to operate the equipment.

IMPORTANT NOTE :

FCC Radiation Exposure Statement:

This equipment complies with FCC radiation exposure limits set forth for an uncontrolled environment. This equipment should be installed and operated with minimum distance 20cm between the radiator & your body.