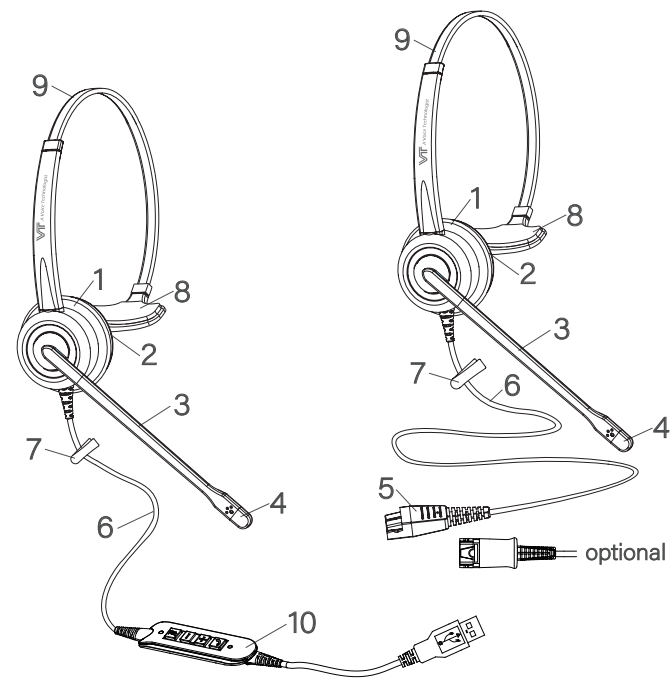
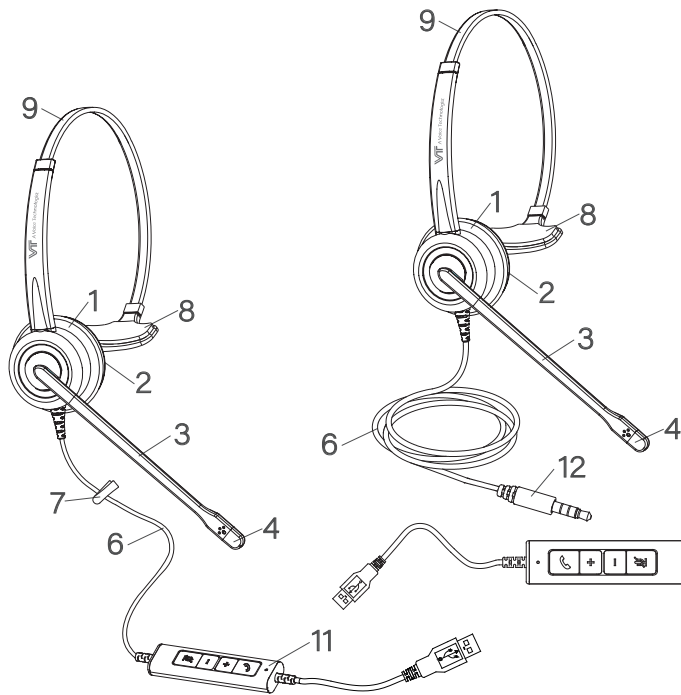


VT 6200/6300 Series



UC Headset Components

- | | | |
|--------------------|------------------|------------------|
| 1 Receiver | 6 Cable | 11 USB04 housing |
| 2 Ear cushion | 7 Clothing clip | 12 3.5mm jack |
| 3 Flex boom | 8 T-bar | |
| 4 Microphone | 9 Headband | |
| 5 Quick Disconnect | 10 USB03 housing | |

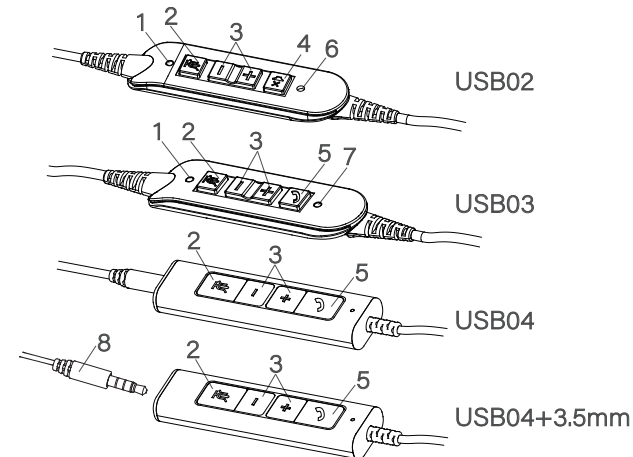


New Feature For USB

- Work with any PC & Softphone(Skype For Business), Microsoft Lync, Microsoft Teams(USB02 support audio, USB03 & USB04 support hook off/on)

Connection

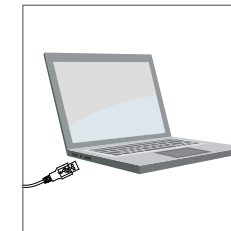
- Connect your VT 6200/6300 USB Series Headset to a free USB port on your PC.
- Make sure that the headset has been selected as the standard audio device in the system control audio settings.
- Check whether you need to adjust these settings to use a headset by reading the operating instructions for your softphone application.



Headset Components

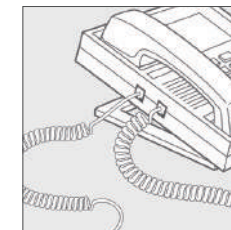
- 1 Display light for mute microphone
- 2 Mute microphone
- 3 Volume control
- 4 Mute Speaker(only for USB02)
- 5 Hook On/Off Key (only for USB03 & USB04)
- 6 Display for operation(only for USB02)
- 7 Display for Hook Off
- 8 3.5mm jack

Using Your Headset



Using Your USB Headset

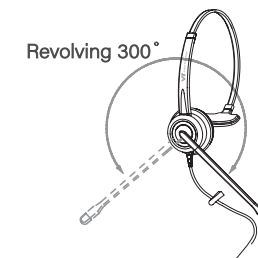
Connect your VT 6200/6300 USB Series Headset to a free USB port on your PC.



Using Your QD Headset

If your telephone has a headset port, insert the modular plug of the Quick Disconnect coil cord into the headset port.

Wearing Your Headset

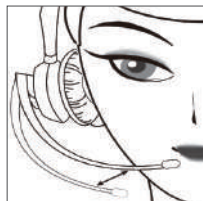


To change side, rotating the microphone boom over the headband to accommodate the left or right ear.

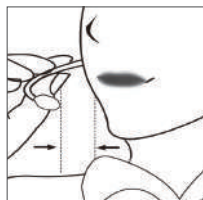
Maintenance



Place the headset receiver to your ear(s), if using a single ear headset you should set the T-bar above the other ear. Adjust the headband until it is comfortable, ideally ensuring that there is virtually no pressure felt on the ear(s).



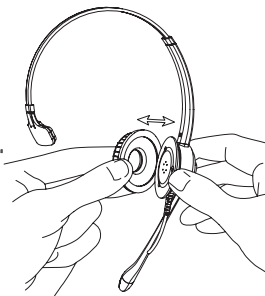
To avoid low or distorted sound, and to provide clear and crisp telephone calls, the microphone should be positioned within 30-40mm of your mouth. The microphone boom arm will move in a variety of directions to ensure the best fit.



Your new headset is supplied with a clothing clip to allow comfortable fitting of your headset without the cable getting caught or inadvertently pulled. The clothing clip should be fastened at a comfortable level, ensuring that there is sufficient slack on the cable allowing free movement of your head without disturbing the headset position.

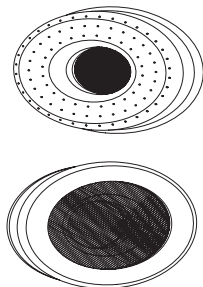
Ear Cushion Removal

Using both thumbs, remove the ear cushion by gently prying the earplate away from the groove on the receiver.



Maintenance

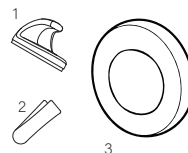
The ear cushions can be removed for cleaning or replacement.



Accessories

Replacements & enhancements for the VT Series headsets:

- 1 Headset hook
- 2 Clothing clip
- 3 Foam ear cushion



Safety

For your own safety, this product should only be used with CE and RoHS approved equipment. Using this headset with non approved equipment can void this product warranty.

FCC Warning

This device complies with Part 15 of the FCC Rules. Operation is subject to the following two conditions:

(1) This device may not cause harmful interference, and (2) this device must accept any interference received, including interference that may cause undesired operation. NOTE 1: This equipment has been tested and found to comply with the limits for a Class B digital device, pursuant to part 15 of the FCC Rules. These limits are designed to provide reasonable protection against harmful interference in a residential installation.

This equipment generates uses and can radiate radio frequency energy and, if not installed and used in accordance with the instructions, may cause harmful interference to radio communications. However, there is no guarantee that interference will not occur in a particular installation. If this equipment does cause harmful interference to radio or television reception, which can be determined by turning the equipment off and on, the user is encouraged to try to correct the interference by one or more of the following measures:

- Reorient or relocate the receiving antenna.
- Increase the separation between the equipment and receiver.
- Connect the equipment into an outlet on a circuit different from that to which the receiver is connected.
- Consult the dealer or an experienced radio/TV technician for help.

NOTE 2: Any changes or modifications to this unit not expressly approved by the party responsible for compliance could void the user's authority to operate the equipment.

Xiamen VBeT Electronics Co.,Ltd

Add: Unit 701-702, Building #1, No.4 Xingqi Road, Tongxiang High-tech City, Xiamen Torch Hi-tech Industrial Development Zone.

Xiamen, Fujian, China P.C 36110

Tel : +86-592-5778728

Fax: +86-592-5778708

E-mail: sales@vbetglobal.com

Web: www.vbetglobal.com

62-02009-A2



VT 6200/6300 Series User Manual