

IQ sound[®]

INSTRUCTION MANUAL

15" ACTIVE BLUETOOTH SPEAKER WITH LED LIGHTS



Model: IQ-4715DJBT

OPERATION

1. Prior to switching on, turn volume down to minimum.
2. Connect the audio source to the appropriate input socket.
3. Connect to the mains supply.
4. Switch on the audio source, followed by the active speaker.
5. Set the volume with the applicable control.
6. Adjust the bass + mid + treble.

WARNINGS

- Do not overload the box to avoid damage to the speakers.
- Do not place an open fire(candles etc)on top or next to the box-FIRE HAZARD.
- For indoor use only. If the box is used outdoors, you need to make sure that no humidity can enter the box.
- When not in use, unplug the unit from the mains.
- Unplug the unit from the mains prior to checking or replacing the fuse.
- Make sure that the box is placed on a stable, strong surface.
- Only use suitable means of transportation if you want to move the box-BE-WARE OF YOUR BACK!
- Always unplug the unit during a thunderstorm when it is not in use.
- If the unit has not been used for a long period of time, condensation can be occurredinside the house.
- Please wait the unit reaching room temperature before switching it on.
- Never try to repair the unit by yourself. It does not contain any user repair-able parts.
- Run the main lead in a way that nobody can fall over it and nothing can be put onto it.
- Set the unit to the lowest volume before switching it on.
- Keep the unit out of the reach to children.



- **CAUTION, TO REDUCE THE RISK OF ELECTRIC SHOCK, DO NOT REMOVE COVER (OR BACK)**
- **THIS PRODUCT MUST BE EARTHED**
- **NO USER-SERVICEABLE PARTS INSIDE, REFER SERVICING TO QUALIFIED SERVICE PERSONNEL**

ACCESSORIES:

- Power plug
- Remote control
- Tripod stand
- Wired microphone
- User manual

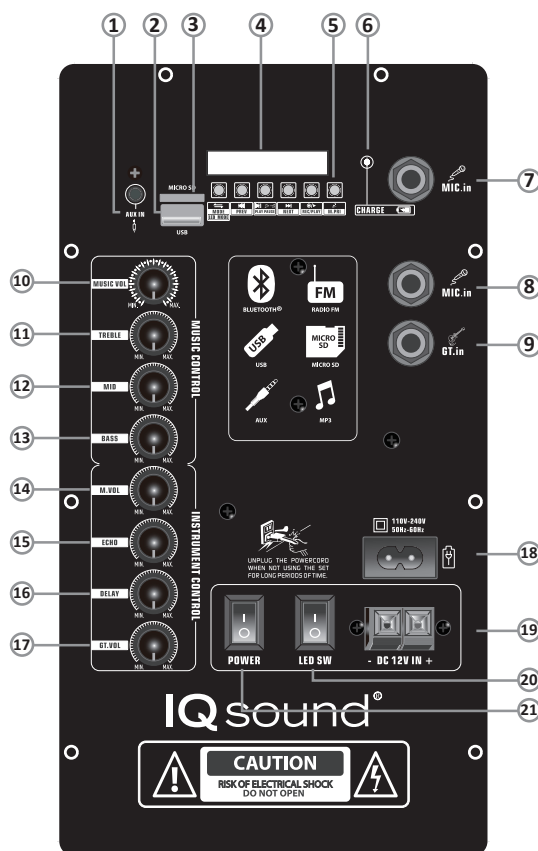
DIMENSIONS:

- N.W.: 11.24 lbs.
- G.W.: 13.67 lbs.
- Unit Dimensions:
14.13"x16.54"x24.8"
- Giftbox Dimensions:
17.13"x19.88"x26.97"

SPECIFICATIONS:

- Power Input: DC12V
- Maximum Power Consumption: 80W
- RMS Power: 40W
- SystemType-Woofer: 15" Tweeter: piezo
- Frequency Response: 80Hz-17KHz
- Impedance: dual 4Ω
- S/N Ratio: 70dB
- Micro SD Capacity: 32GB
- USB Drive Capacity: 32GB
- Function: Bluetooth/Micro SD/USB/FM/TWS/AUX/Mic Input/Guitar Input
- Built-In Rechargeable Battery: 7.4V/3600mA
- Play Time: Approx. 5Hrs at 10% Volume
- Charging Time: Approx. 4Hrs

CONTROLS AND CONNECTIONS



1. AUX INPUT
2. USB INPUT
3. MICRO SD
4. Digital tube display
5. MP3 button(Music format: MP3, WMA, WAV, FLAC, APE)

Bluetooth connection: Press the mode button, switch to Bluetooth mode, at this time the LED screen displays BLUE flashing.

Phone BT name: IQ-4715DJBT, click connect, when the connection is successful, the host LED stops flashing.

⇌ MODE button, short press to switch audio mode, Bluetooth FM-USB AUX; Long press the light mode to switch LED1-6

⏮ Short press the previous song, long press to decrease the volume

⏸ Short press to play/pause, long press TWS

⏭ Short press a song, long press to increase volume

⏮ Record/replay button

🎤 Microphone priority on/key

6. Charging indicator light, charging red light, fully charged blue light

It takes 4 hours to fully charge the battery, can play more than 5 hours on a fully charged battery

7. Microphone input

8. Microphone input

9. Guitar input

10. Total volume knob

11. High frequency knob

12. Mid tone knob

13. Bass knob

14. Microphone volume knob

15. Reverberation knob

16. Delay knob

17. Guitar volume knob

18. Power input

19. External battery input

20. Lamp effect switch

21. Power switch

TWS: The TWS mode allows the use of 2 IQ-4715DJBT speakers in stereo bluetooth.

You must have 2 identical speakers for this.

1. Put the 2 speakers in Bluetooth mode
2. On one of the 2 speakers, press and hold the TWS button on the MP3 module .

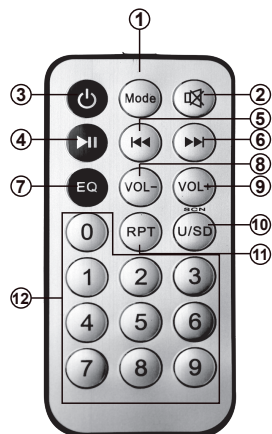
The both speakers are now paired.

3. Connect via Bluetooth to the speaker.

FM: Press the mode button to switch to FM mode, and then press the play pause key to enter the search state. At this time, the LED shows the FM frequency bounce, when there is a radio station automatically stored, LED shows CH01, the second station CH02, in turn stored. After the search is complete, press the previous or next button to select the radio station

REMOTE CONTROL

1. MODE: switch between USB/ MICRO SD/BT/FM/LINE IN
2. Mute mode
3. standby mode
4. **⏮**: Play / Pause
5. **⏮**: when USB/MICRO SD: Previous Song
when FM: switch to backward
6. **⏭**: when USB/MICRO SD: next Song
when FM: switch to next channel
7. EQ: NORMAL,BASS,POP,ROCK,CLASS,JAZZ
8. VOL-: Decrease volume
9. VOL+: Increase volume
10. USB/MICRO SD control
SCAN: Long press to auto search under FM radio
11. RPT: Random/Single/Order
12. 0-9: choosing music by numbers



Remove the plastic spacer and then can use.

- Remove and immediately recycle or dispose of used batteries according to local regulations and keep away from children. Do NOT dispose of batteries in household trash or incinerate.
 - Even used batteries may cause severe injury or death.
 - Call a local poison control center for treatment information.
 - Identification of compatible battery type: CR2025
 - Nominal battery voltage: 3V
 - Non-rechargeable batteries are not to be recharged.
 - Do not force discharge, recharge, disassemble, heat above (manufacturer's specified temperature rating) or incinerate. Doing so may result in injury due to venting, leakage or explosion resulting in chemical burns.
 - Ensure the batteries are installed correctly according to polarity (+ and -).
 - Do not mix old and new batteries, different brands or types of batteries, such as alkaline, carbon-zinc, or rechargeable batteries.
 - Remove and immediately recycle or dispose of batteries from equipment not used for an extended period of time according to local regulations.
 - Always completely secure the battery compartment.
- If the battery compartment does not close securely, stop using the product, remove the batteries and keep them away from children.

Troubleshooting tips

1.Can not be turned on, silent failure

- Check the battery: the battery will be damaged if it is not charged for a long time, and it should be charged at an interval of 3 months according to the battery requirements.
- Check the power supply: ensure that the power supply is correctly connected, and use a multimeter to measure whether the power supply voltage meets the requirements.
- Check the line: check whether the audio line is broken, short circuit or poor contact, and the plug terminal is damaged.
- Check the speaker: check whether the speaker is damaged, degumming, falling off, or broken.
- Check the amplifier: If the above are normal, it may be a power amplifier fault, need to contact professional maintenance.

2.Sound distortion

- Check the input sound source: If the input sound source is too large to cause distortion, reduce the sound source signal appropriately.
- Check the speaker: Damaged voice coil of the speaker may also cause distortion, requiring replacement of the speaker.
- Interference elimination: Ensure that the audio signal is not subject to external interference, such as electromagnetic interference.

3. Bluetooth cannot be connected

- Check the whole machine: whether it is in Bluetooth mode, check the Bluetooth name and eliminate the surrounding electromagnetic interference
- Check function: whether other devices have been connected and whether they are in TWS state

4. Other faults

- Speaker port aging: When the contact is poor, the port needs to be replaced or re-welded.

5. Maintenance suggestions

- For non-professionals, it is recommended to avoid disassembling the internal parts of the audio itself, so as not to cause greater damage.
- Before maintenance, it is best to record the fault phenomenon and maintenance process in detail for subsequent investigation and maintenance.

Hope the above information can help you solve the problem of audio failure.

If you encounter complex or difficult problems, it is recommended to contact professional maintenance personnel for handling.



WARRANTY

Supersonic Inc. ("Supersonic") warrants this product to the original purchaser **ONLY**, to be free from defects in materials and workmanship under normal use, for ninety (90) DAYS from the date of original purchase. Proof of purchase (receipt) required.

Please visit <https://www.supersonicinc.com/pages/warranty> for additional information.

FCC Warning

15.19 Labeling requirements.

This device complies with part 15 of the FCC Rules. Operation is subject to the following two conditions: (1) This device may not cause harmful interference, and (2) this device must accept any interference received, including interference that may cause undesired operation.

15.21 Information to user.

Any Changes or modifications not expressly approved by the party responsible for compliance could void the user's authority to operate the equipment.

15.105 Information to the user.

Note: This equipment has been tested and found to comply with the limits for a Class B digital device, pursuant to part 15 of the FCC Rules. These limits are designed to provide reasonable protection against harmful interference in a residential installation. This equipment generates uses and can radiate radio frequency energy and, if not installed and used in accordance with the instructions, may cause harmful interference to radio communications. However, there is no guarantee that interference will not occur in a particular installation. If this equipment does cause harmful interference to radio or television reception, which can be determined by turning the equipment off and on, the user is encouraged to try to correct the interference by one or more of the following measures:

- Reorient or relocate the receiving antenna.
- Increase the separation between the equipment and receiver.
- Connect the equipment into an outlet on a circuit different from that to which the receiver is connected.
- Consult the dealer or an experienced radio/TV technician for help.

FCC RF Radiation Exposure Statement:

1. This Transmitter must not be co-located or operating in conjunction with any other antenna or transmitter.
2. This equipment complies with RF radiation exposure limits set forth for an uncontrolled environment.

This equipment should be installed and operated with minimum distance 20cm between the radiator and your body.

⚠ WARNING

- **INGESTION HAZARD:** This product contains a button cell or coin battery
- **DEATH** or serious injury can occur if ingested.
- A swallowed button cell or coin battery can cause **Internal Chemical Burns** in as little as **2 hours**.
- **KEEP** new and used batteries **OUT OF REACH of CHILDREN**
- **Seek immediate medical attention** if a battery is suspected to be swallowed or inserted inside any part of the body.

