

Mesh Systems LLC
1920 N Casaloma Drive
Appleton, WI 54913
<http://www.mesh-systems.com>



SST200 User Manual



Mesh Systems LLC
1920 N Casaloma Drive
Appleton, WI 54913
<http://www.mesh-systems.com>



TABLE OF CONTENTS

| | |
|---|---|
| FCC Statement..... | 3 |
| Getting Started..... | 4 |
| Battery Installation and Replacement..... | 8 |

Mesh Systems LLC
1920 N Casaloma Drive
Appleton, WI 54913
<http://www.mesh-systems.com>



FCC Statement

This device complies with Part 15 of the FCC Rules. Operation is subject to the following two conditions:

- (1) This device may not cause harmful interference and
- (2) This device must accept any interference received, including interference that may cause undesired operation.

INSTRUCTION TO THE USER

This equipment has been tested and found to comply with the limits for a Class B digital device, pursuant to Part 15 of the FCC Rules. These limits are designed to provide reasonable protection against harmful interference in a residential installation. This equipment generates, uses and can radiate radio frequency energy and if not installed and used in accordance with the instructions, may cause harmful interference to radio communications. However, there is no guarantee that interference will not occur in a particular installation. If this equipment does cause harmful interference to radio or television reception, which can be determined by turning the equipment off and on, the user is encouraged to try to correct the interference by one or more of the following measures:

- * Reorient or relocate the receiving antenna.
- * Increase the separation between the equipment and receiver.
- * Consult the dealer or an experienced radio/TV technician for help.

The user is cautioned that changes and modifications made to the equipment without the approval of manufacturer could void the user's authority to operate this equipment.

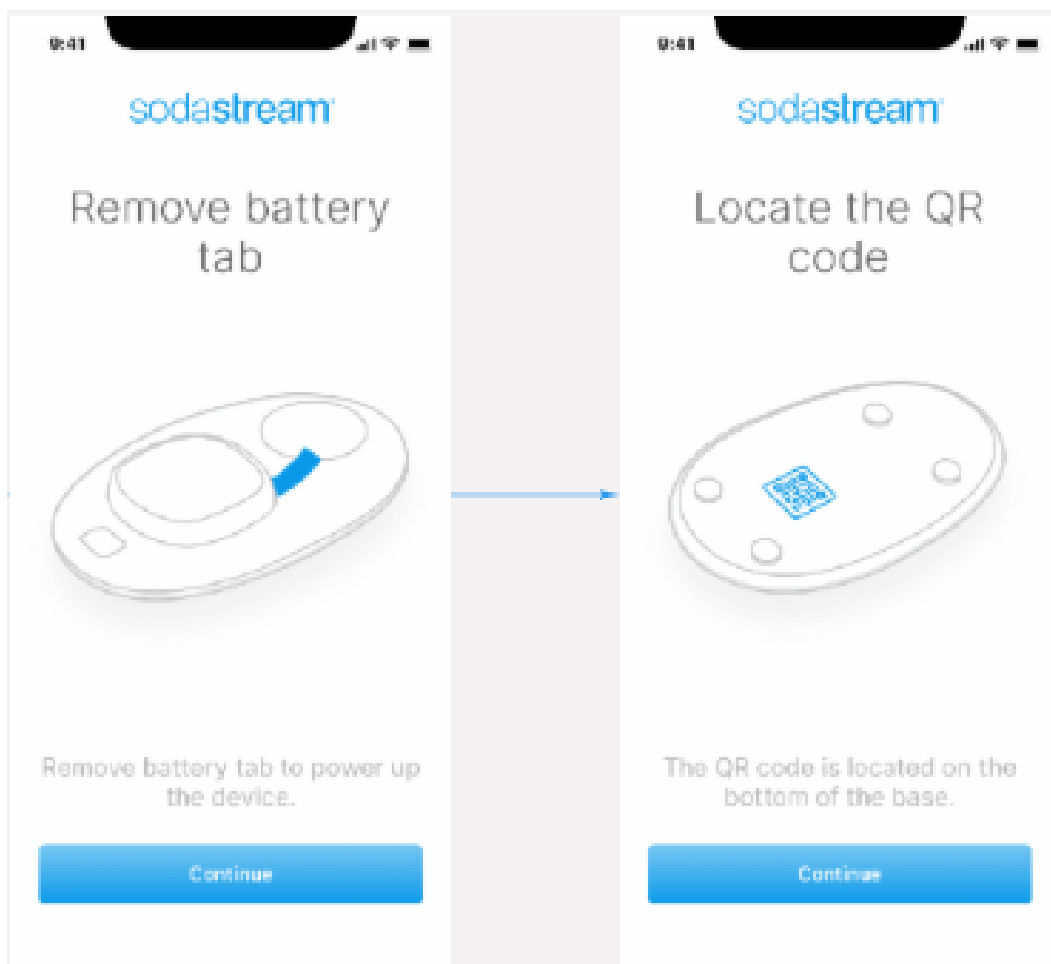
This equipment complies with FCC radiation exposure limits set forth for an uncontrolled environment. This equipment should be installed and operated with minimum distance 20cm between the radiator and your body. This transmitter must not be co-located or operating in conjunction with any other antenna or transmitter.

Mesh Systems LLC
1920 N Casaloma Drive
Appleton, WI 54913
<http://www.mesh-systems.com>



Getting Started

Follow the below steps to get your device setup with the mobile app.

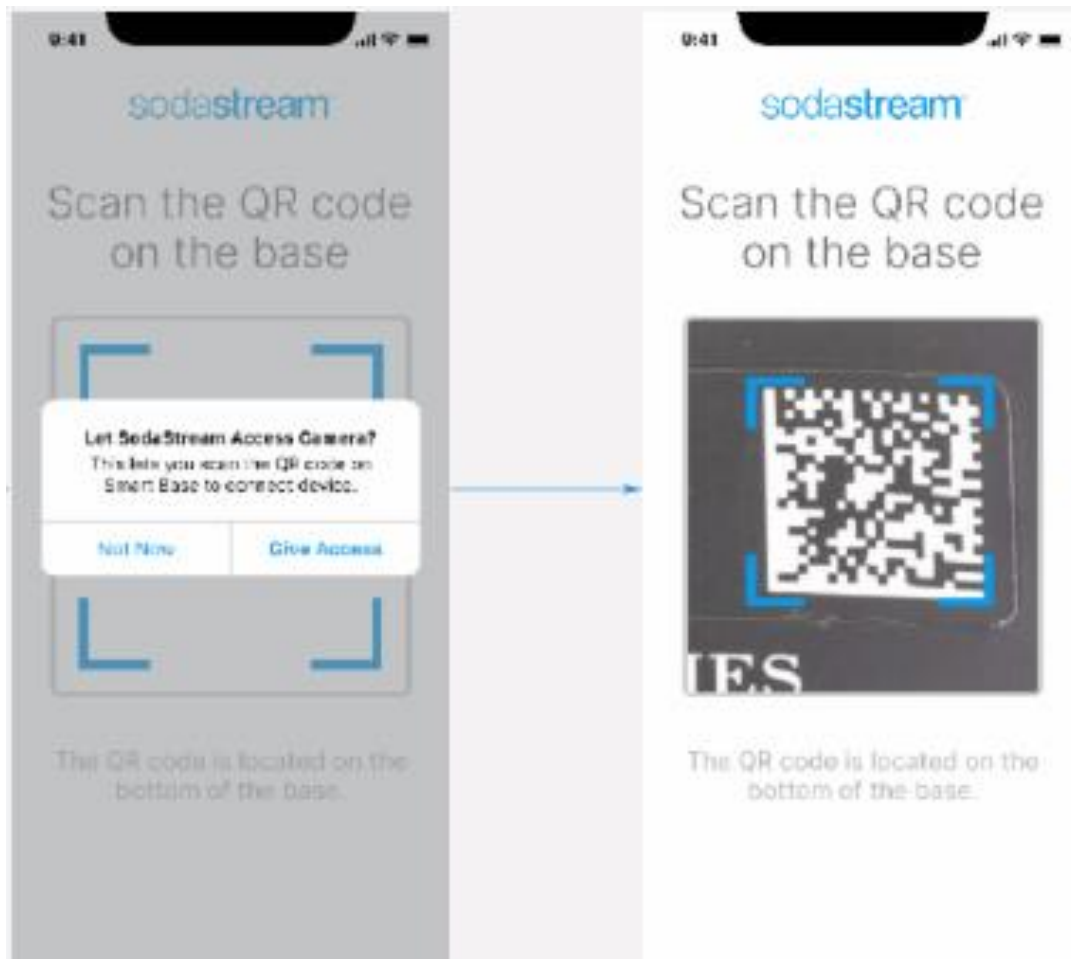


Mesh Systems LLC

1920 N Casaloma Drive

Appleton, WI 54913

<http://www.mesh-systems.com>

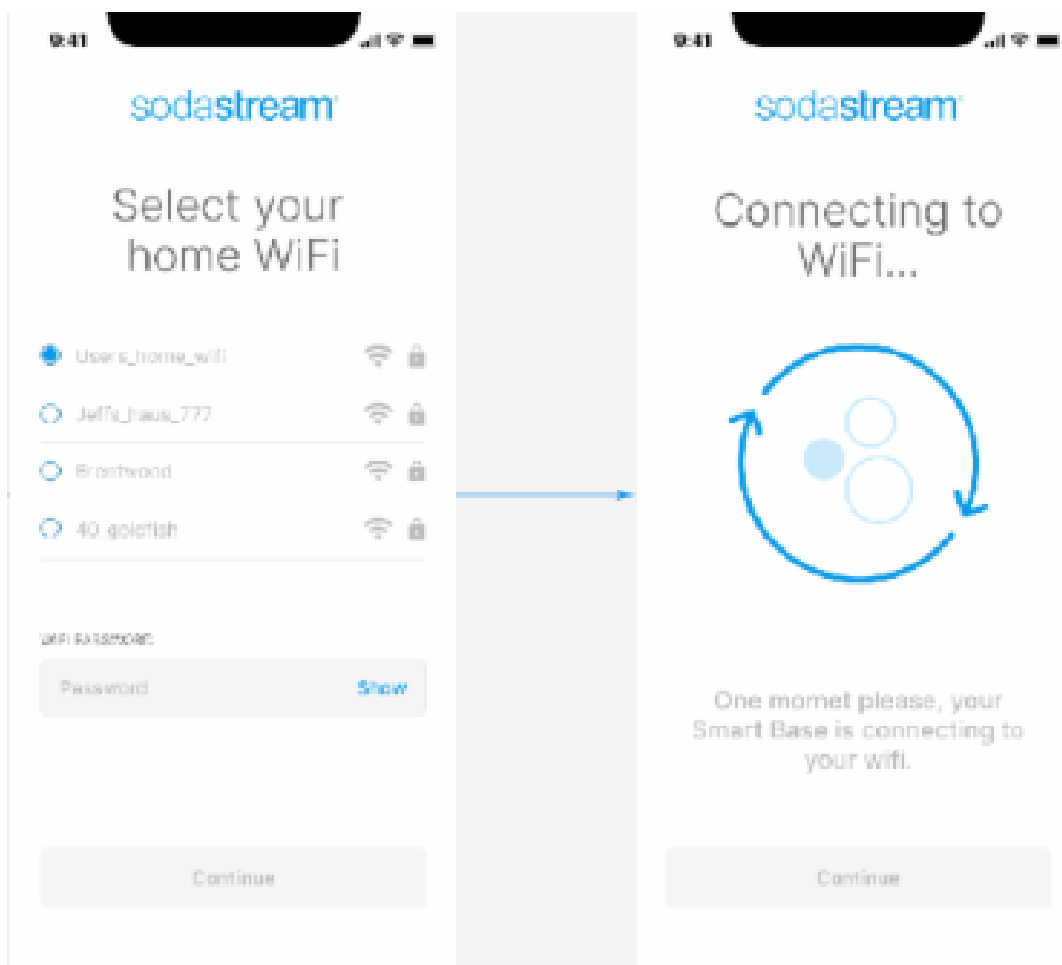


Mesh Systems LLC

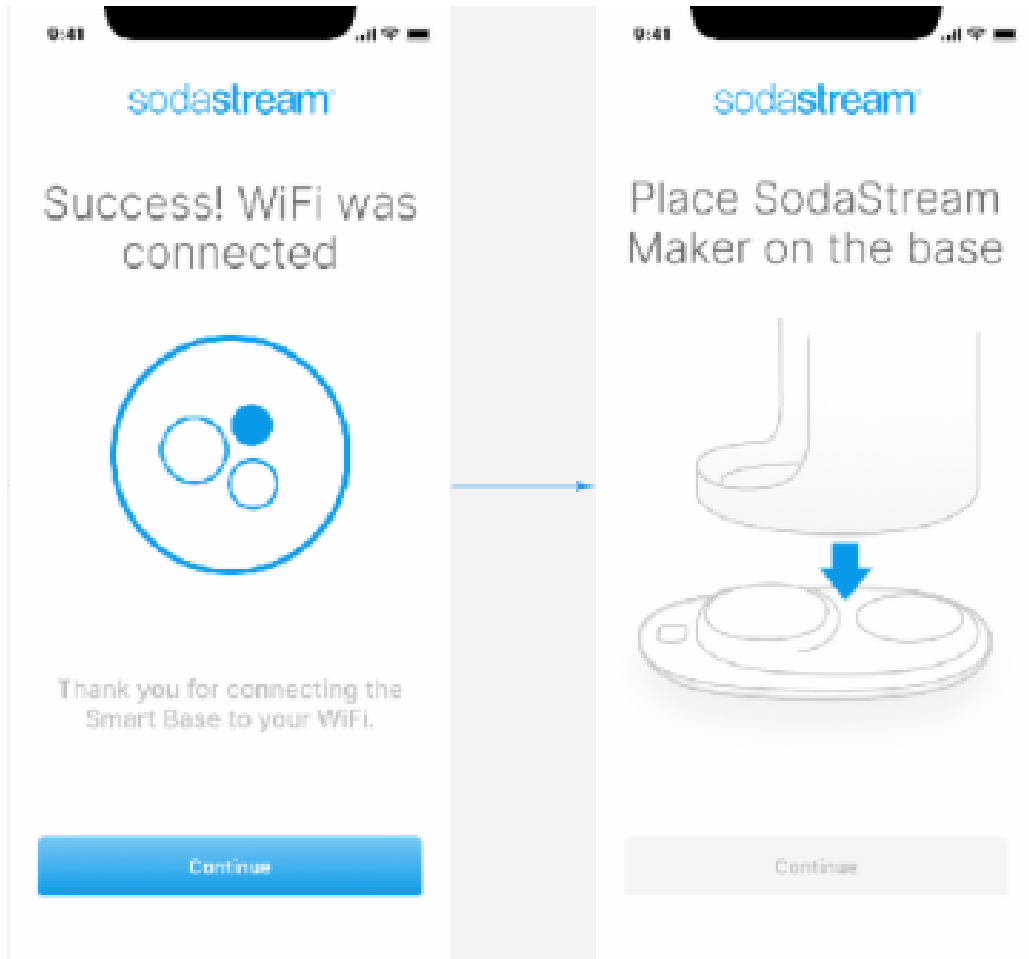
1920 N Casaloma Drive

Appleton, WI 54913

<http://www.mesh-systems.com>



Mesh Systems LLC
1920 N Casaloma Drive
Appleton, WI 54913
<http://www.mesh-systems.com>



Battery Installation and Replacement

To install or replace the batteries on the SST200 remove the plastic cover on top of the unit. When installing new batteries make sure that the orientation of the batteries matches the figures inside the battery compartment. After installing the batteries re-install the plastic cover on the device. The device is now ready to use.

