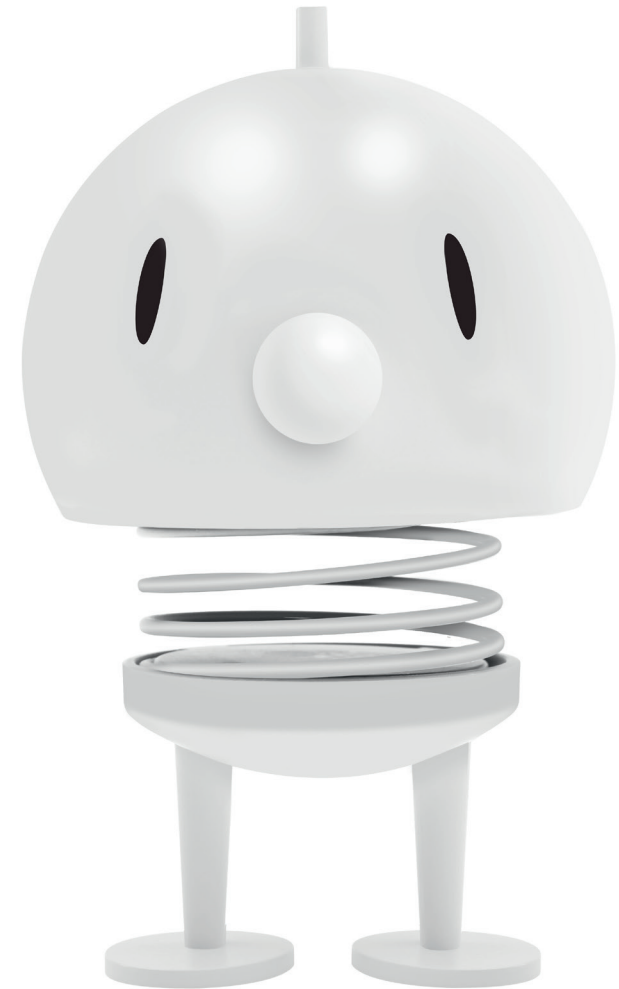


IT IS NOT
A TOY


Danish Design

Instruction Manual LARGE & X-LARGE SPEAKER



Hoptimist[®]
SINCE 1968

INSTRUCTION MANUAL

This Instruction is for Large and X-Large Speaker

SPECIFICATIONS, LARGE SPEAKER

- Wireless speaker
- 4.5 hours charging time
- Lasts 3-3.5 hours at max. volume
- Lasts 5-6 hours at 60% volume
- USB-C cable included
- Power: 5 W
- Suitable for indoor use only

SPECIFICATIONS, X-LARGE SPEAKER

- Wireless speaker
- 7-8 hours charging time
- Lasts 4 hours at max. volume
- Lasts 6-8 hours at 60% volume
- USB-C cable included
- Power: 5 W
- Suitable for indoor use only

This is not a toy. It is not designed or intended for children age 12 or younger.

WARNINGS AND CAUTIONS

The USB cable is not waterproof and must be kept in a dry location at all times.

This product is not designed to be used in pools or ponds.

Never charge the product in a pool, water or rain; charge it in a dry, indoor location.

Disconnect the power supply from power outlet when not in use.

Do not stand, sit or jump on this product.

Keep the product away from chemicals and heat.

Do not attempt to open the product.

The product won't be under warranty if opened without permission.

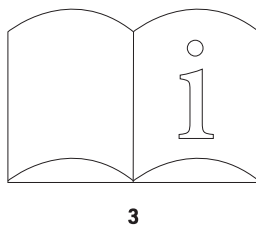
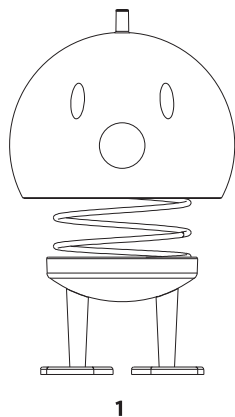
The product can be only charged by a max. 5V output charger, if over 5V, the battery will be broken.

**Notice: All icons from this instruction are for reference only, please refer to the actual product for details.*

OPERATION

Product with Accessories

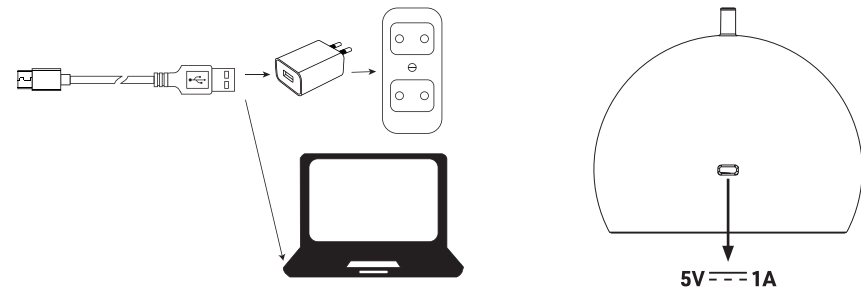
- 1: 1 x Lamp
- 2: 1 x USB cable
- 3: 1 x User manual



Charging your Speaker

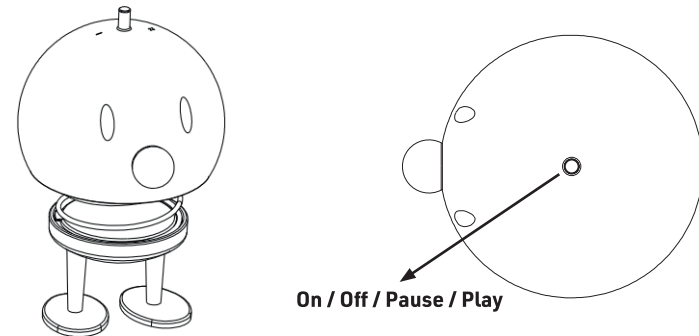
The battery of this speaker is recharged by its cable supplied on a computer, or a max. DC 5V output charger not supplied.

Charge the product for at least 8 hours before using. When charging the Charging indicator red, after full charging it will go off.



Turn your Speaker On / Off and connect

1. Long-press the top button on the speaker. The BT speaker will turn on automatically.
2. Long-press the top button on the BT speaker again. The BT speaker will turn off automatically.
3. Short-press the top button on the BT speaker Pause and Play when playing.
4. The volume add and subtract short / long press top "+" "-". On multiple connection mode only the master speaker can be adjust the volume.
5. Power saving mode for 10 minutes, when bluetooth and the product disconnected, then speaker shutdown.



Unit to play music

After turning on the speaker and activating the connection function, start the connecting function on your mobile device and select "Hoptimist" on your list of available devices.

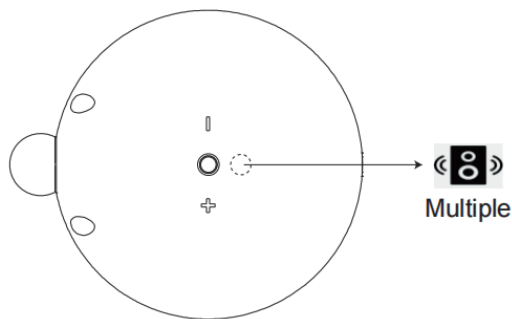
Play music on your smartphone and control the playback.

Multiple connection to play music

In case you purchase more Hoptimist products, they can be Multiple connection.

First time to connection more speakers

When opened Bluetooth. Short-press "Multiple" button from any one of the speakers will have prompt tone, the speaker which you chose for Short-press will become the master one and others will be vice. Start the multiple connection function on your mobile device and select "Hoptimist" on your smartphone's list of available devices. When Playing, the master speaker will showing green indication light, the vice speakers' green indication light will be off.



Notice: If the two products are in the mobile phone Bluetooth device list, the two products can not connect, need delete one of Bluetooth device on your mobile list, then can be connect.

MAINTENANCE FOR PRODUCT AND ACCESSORIES

Cleaning: It is recommended that after use the products are turned off, using dried soft cloth to clean.
When not using: Store these products out of reach of children and direct sunlight when not in use.



FCC Caution: Any changes or modifications not expressly approved by the party responsible for compliance could void the user's authority to operate this equipment.

This device complies with Part 15 of the FCC Rules. Operation is subject to the following two conditions:

- (1) This device may not cause harmful interference, and
- (2) this device must accept any interference received, including interference that may cause undesired operation.

NOTE:

This equipment has been tested and found to comply with the limits for a Class B digital device, pursuant to Part 15 of the FCC Rules. These limits are designed to provide reasonable protection against harmful interference in a residential installation. This equipment generates, uses and can radiate radio frequency energy and, if not installed and used in accordance with the instructions, may

cause harmful interference to radio communications. However, there is no guarantee that interference will not occur in a particular installation. If this equipment does cause harmful interference to radio or television reception, which can be determined by turning the equipment off and on, the user is encouraged to try to correct the interference by one or more of the following measures:

- Reorient or relocate the receiving antenna.
- Increase the separation between the equipment and receiver.
- Connect the equipment into an outlet on a circuit different from that to which the receiver is connected.
- Consult the dealer or an experienced radio/TV technician for help.

FCC Radiation Exposure Statement:

The equipment complies with FCC Radiation exposure limit set forth for uncontrolled environment. The device shall be operated and installed without restriction.

61831 // © F&H MARKETING // WE ACCEPT NO LIABILITY FOR PRODUCT CHANGES AND PRINTING ERRORS.

**F&H
GROUP**

Gl. Skivevej 70
DK-8800 Viborg

info@fh-group.dk
www.fh-group.dk

T +45 8928 1300

