



# **Payment Express® BRF300**

## **Hardware Guide**

**Version 0.3**

## DOCUMENT REVISION INFORMATION

---

Version	Revision Information
0.1	Initial version.
0.2	
0.3	

## RELATED DOCUMENTS

---

Version	Document Title

## COPYRIGHT

---

© Copyright 2017, Payment Express Limited  
33 Wilkinson Road, Ellerslie  
PO Box 8400  
Auckland, 1150  
New Zealand  
[www.paymentexpress.com](http://www.paymentexpress.com)

All rights are reserved. No part of this work may be reproduced or copied in any form or by any means, electronic or mechanical, including photocopying, without the express written permission of Payment Express Limited.

## PROPRIETARY NOTICE

---

The information described in this document is proprietary and confidential to Payment Express Limited. Any unauthorised use of this material is expressly prohibited except as authorised by Payment Express Limited in writing.

# CONTENTS

Document Revision Information .....	2
Related Documents .....	2
Copyright .....	3
Proprietary Notice .....	3
1 Overview .....	1
2 BRF300 ANTENNA LANDSCAPE ASSEMBLY (AB0163) .....	1
2.1 Dimensions .....	2
2.2 Machine CutOut .....	3
3 BRF300 ANTENNA PORTRAIT ASSEMBLY (AB0164) .....	4
3.1 Dimensions .....	5
3.2 Machine CutOut .....	6
4 Installation .....	7
5 Secure Acceptance .....	9
5.1 Serial Numbers .....	9
5.2 Sign of Tampering .....	9
6 Maintenance .....	9
6.1 Tradeouts & Deactivation Process .....	9
7 Appendix .....	10
7.1 Contact Payment Express .....	10

## 1 OVERVIEW

The BRF300 contactless antenna is an optional receiver that can be plugged into the SCR300 to support contactless payments (e.g. Visa PayWave, MasterCard PayPass, Amex ExpressPay). The BRF300 also supports closed loop proprietary payment cards such as MiFare RFID. The BRF300 can also be used as a standalone device.

The Payment Express BRF300 solution comes in two models. The only difference is mounting orientation. One landscape and one portrait.

## 2 BRF300 ANTENNA LANDSCAPE ASSEMBLY (AB0163)



### Hardware Overview

- The BRF contactless antenna is an optional receiver that can be plugged into the SCR to support contactless payments (e.g. Visa PayWave, MasterCard PayPass, Amex ExpressPay).
- Supports closed loop proprietary payment cards (e.g. MiFare)
- 32-Bit Cortex M3 120MHz processor
- Display LEDs x4
- Landscape design.

### Physical Link Interface

- Connection with the SCR300 unit is via the attached cable located on the back of the BRF300 unit.

### Power Requirements

The device accepts DC regulated from +9VDC to +45V SEL (Safety Extra Low Voltage).

### Operating & Storage Temperature Ratings

Storage: -35 to 80 degrees (Celsius)

Operating: -25 to 75 degrees (Celsius)

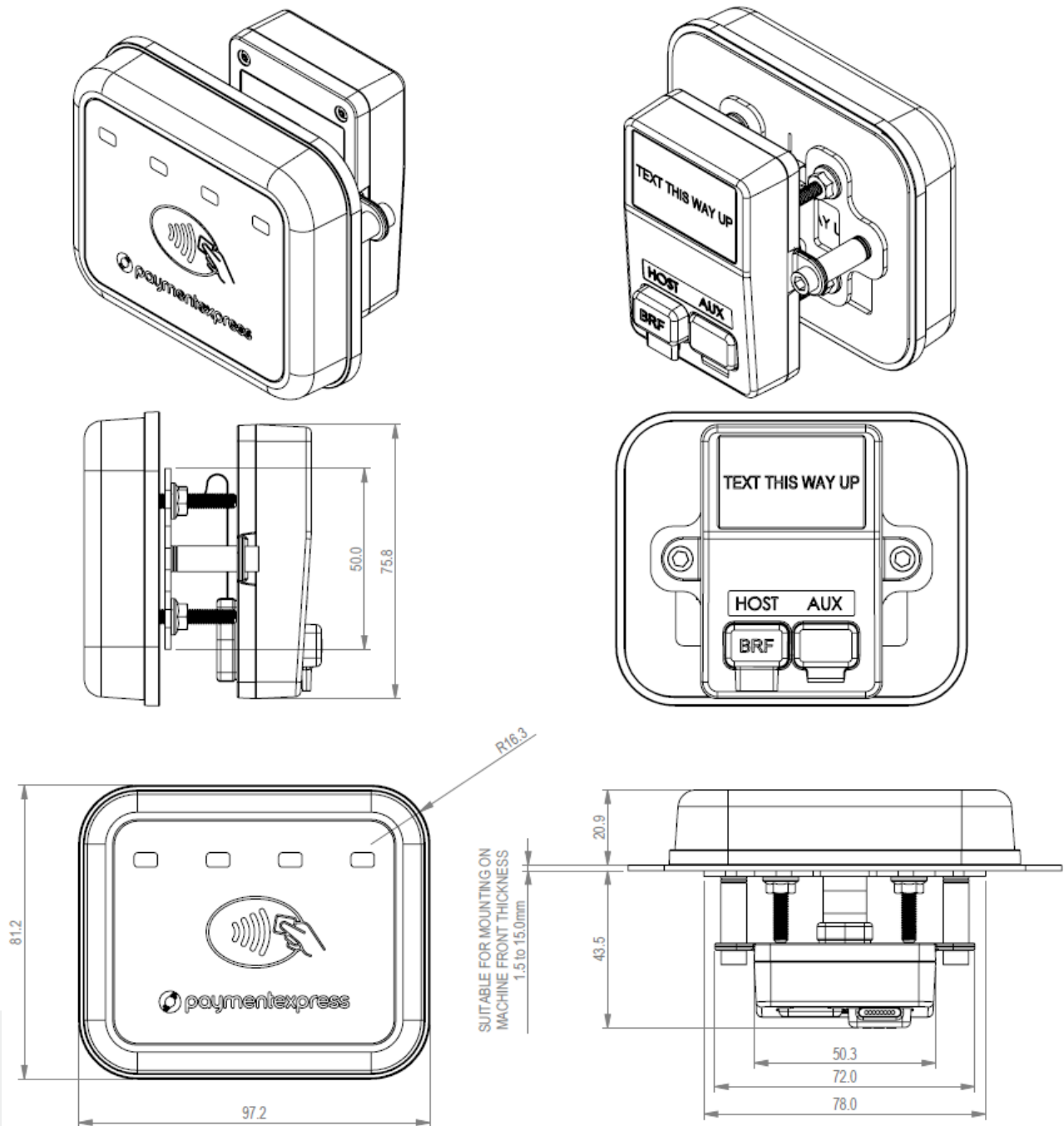
### Additional Comments

This device complies with Part 15 of the FCC Rules. Operation is subject to the following two conditions:

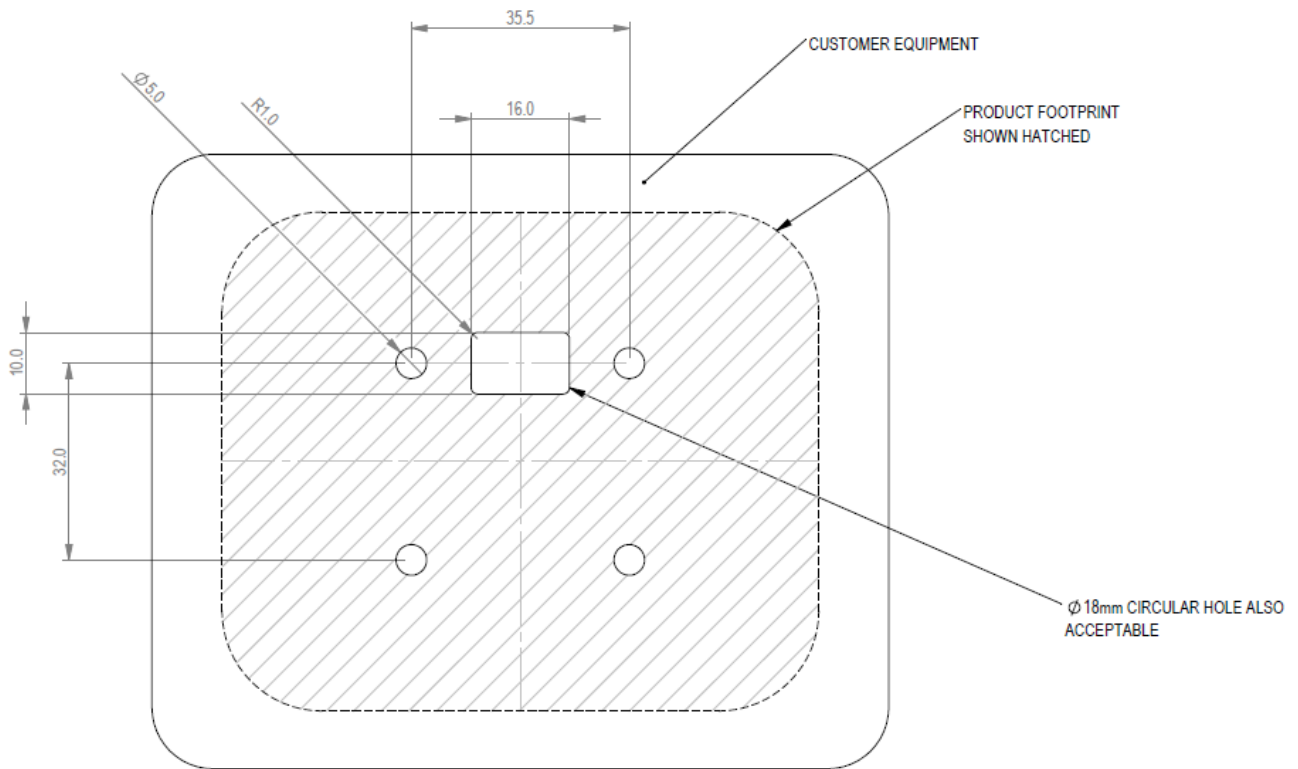
1. This device may not cause harmful interference, and
2. This device must accept any interference received, including interference that may cause undesired operation.

Changes or modifications not expressly approved by the party responsible for compliance could void the user's authority to operate the equipment.

## 2.1 DIMENSIONS



## 2.2 MACHINE CUTOUT



MACHINE CUTOUT  
HORIZONTAL MOUNT  
(VIEWED FROM MACHINE FRONT)

### 3 BRF300 ANTENNA PORTRAIT ASSEMBLY (AB0164)



#### Hardware Overview

- The BRF contactless antenna is an optional receiver that can be plugged into the SCR to support contactless payments (e.g. Visa PayWave, MasterCard PayPass, Amex ExpressPay).
- Supports closed loop proprietary payment cards (e.g. MiFare)
- 32-Bit Cortex M3 120MHz processor
- Display LEDs x4
- Portrait design.

#### Physical Link Interface

- Connection with the SCR300 unit is via the attached cable located on the back of the BRF300 unit.

#### Power Requirements

The device accepts DC regulated from +9VDC to +45V SEL (Safety Extra Low Voltage).

#### Operating & Storage Temperature Ratings

Storage: -35 to 80 degrees (Celsius)

Operating: -25 to 75 degrees (Celsius)

#### Additional Comments

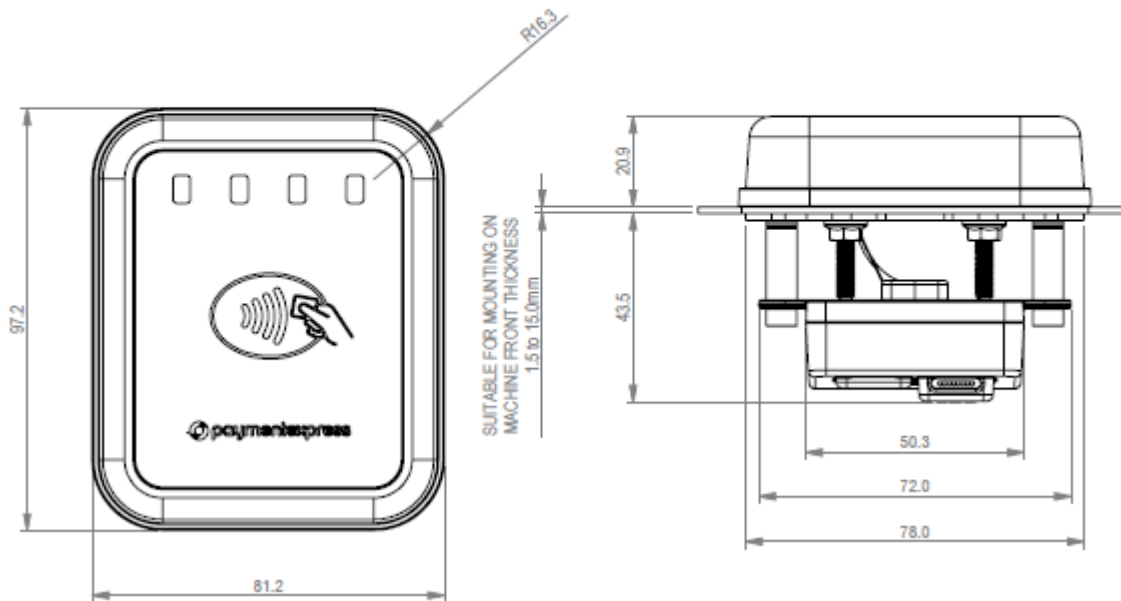
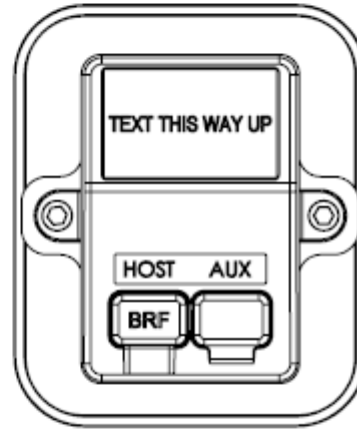
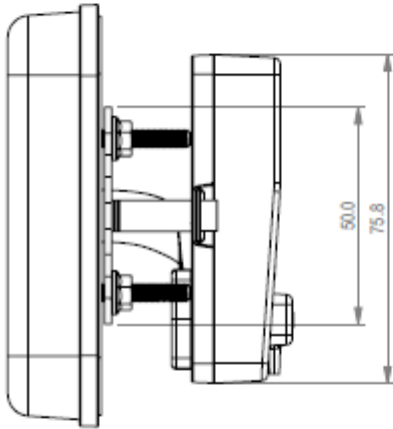
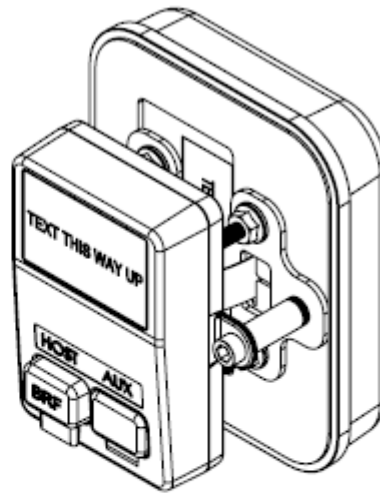
This device complies with Part 15 of the FCC Rules. Operation is subject to the following two conditions:

3. This device may not cause harmful interference, and
4. This device must accept any interference received, including interference that may cause undesired operation.

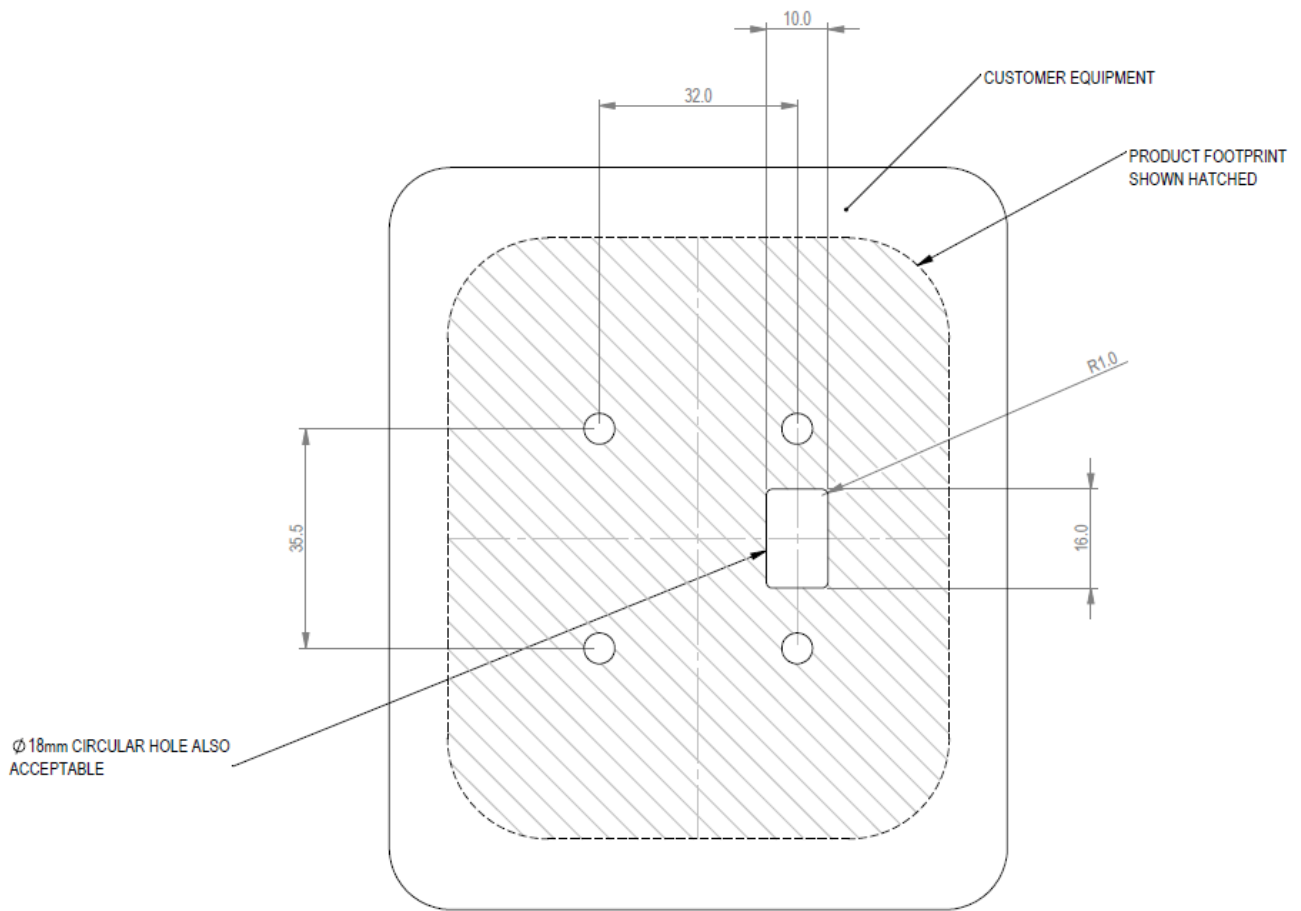
Changes or modifications not expressly approved by the party responsible for compliance could void the user's authority to operate the equipment.



### 3.1 DIMENSIONS



### 3.2 MACHINE CUTOUT



MACHINE CUTOUT  
VERTICAL MOUNT  
(VIEWED FROM MACHINE FRONT)

## 4 INSTALLATION

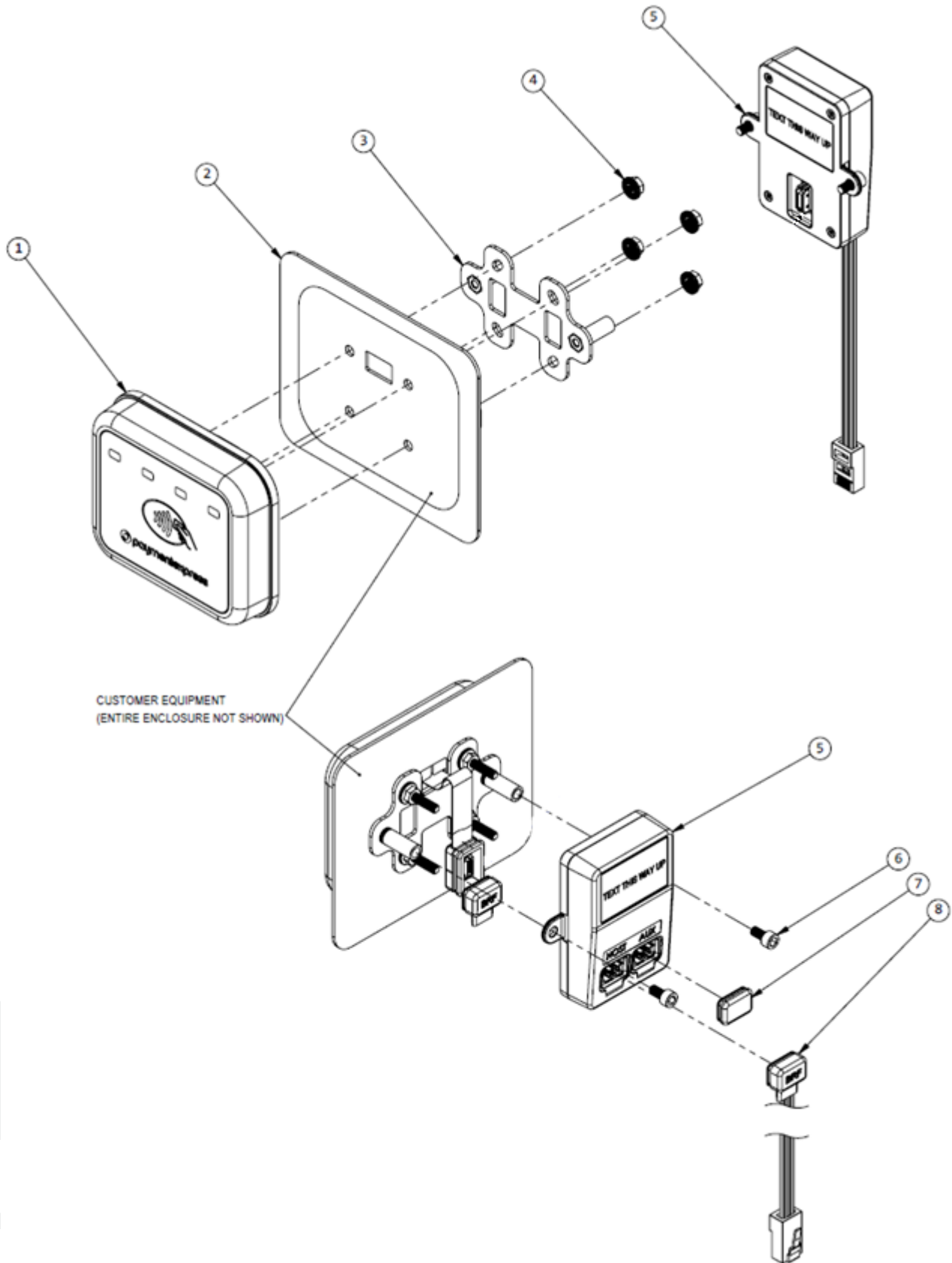
---

Part	Description	Quantity
1	BRF300 Antenna	1
2	Customer equipment with BRF300 mounting cut-out (see X and X).	1
3	Sheet Metal BRF300 Mounting Plate	1
4	Nut M4 Flange Serrated	4
5	BRF300 Controller Only	1
6	Screw M4 x 8mm Cap 3.0mm Hex SS304	2
7	Silicone BRF300 Controller Plug Bung	1
8	BRF300 Power & Comms Cable, 700mm	1
9	Silicon BRF300 Controller Plug Cover	1

### TIGHTENING TORQUES:

M4 FLANGE NUTS = 1.5 Nm

M4 CAP SCREWS = UNTIL SNUG



## 5 SECURE ACCEPTANCE

---

The BRF300 solution is a secure payment device and therefore before any units are installed the customer must check the following.

### 5.1 SERIAL NUMBERS

Each BRF300 device has their own unique serial number. Upon receiving the unit, the customer must check to ensure that the serial number on the box matches the serial number on the unit.

Any discrepancies need to be reported to Payment Express (*see appendix 7.1 for contact numbers*).

### 5.2 SIGN OF TAMPERING

Customers need to check each unit for signs of tampering.

The following should be checked:

- The exterior of the device should have no (new) holes, signs of adhesives or stickers other than the device label.
- The device label should be straight and smooth.
- LED lights. The 4 green LED's will blink 3 times on power up if tampered.

Any signs of tampering or concerns must be reported to Payment Express (*see appendix 7.1 for contact numbers*).

## 6 MAINTENANCE

---

### 6.1 TRADEOUTS & DEACTIVATION PROCESS

In the event that the BRF300 devices need to be swapped out or deactivated, please follow instructions below.

1. Call Payment Express Support to log a ticket (*see appendix 7.1 for contact numbers*). Please provide the following information.
  - Serial Number of BRF300 device(s).
  - Brief description of fault / reason for deactivation.
  - Contact Name.
  - Contact Phone Number.
  - Shipping Address (for replacement if needed).
2. Physically remove the device(s).
3. Ship the device(s) back to Payment Express.

## 7 APPENDIX

---

### 7.1 CONTACT PAYMENT EXPRESS

#### Phone

<b>International</b>	+64 9 309 4693
<b>Australia</b>	1 800 006 254 or +61 2 8268 7700
<b>Hong Kong</b>	+852 3 678 6766
<b>New Zealand</b>	0800 PAYMENT (729 6368) or 09 309 4693
<b>Singapore</b>	+65 3 158 1353
<b>South Africa</b>	+27 10 500 8784
<b>United Kingdom</b>	+44 (0) 20 3176 5551
<b>USA</b>	+1 310 670 7299

#### E-mail

<b>Sales</b>	<a href="mailto:sales@paymentexpress.com">sales@paymentexpress.com</a>
<b>Support</b>	<a href="mailto:support@paymentexpress.com">support@paymentexpress.com</a>
<b>Dev Support</b>	<a href="mailto:devsupport@paymentexpress.com">devsupport@paymentexpress.com</a>