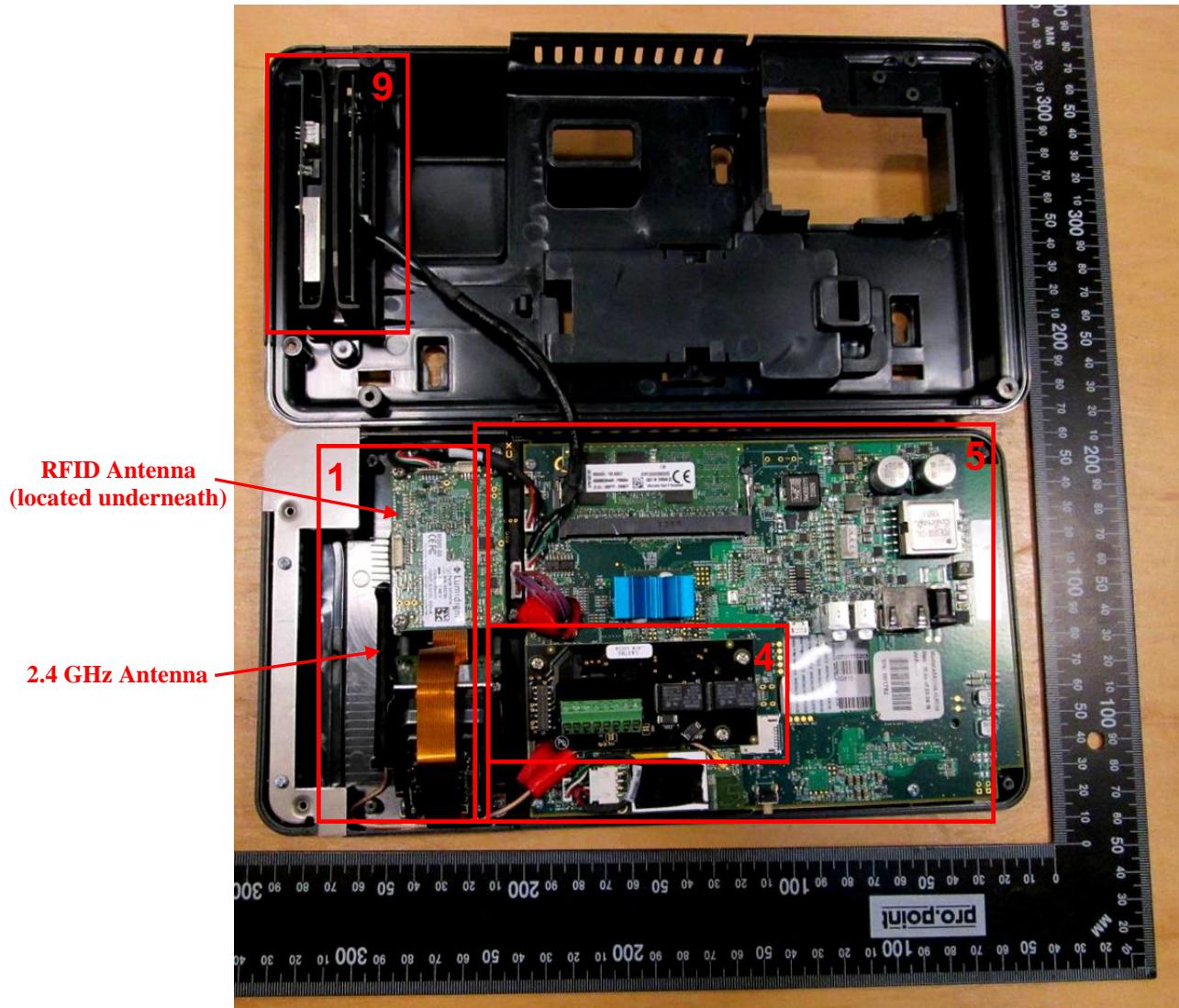
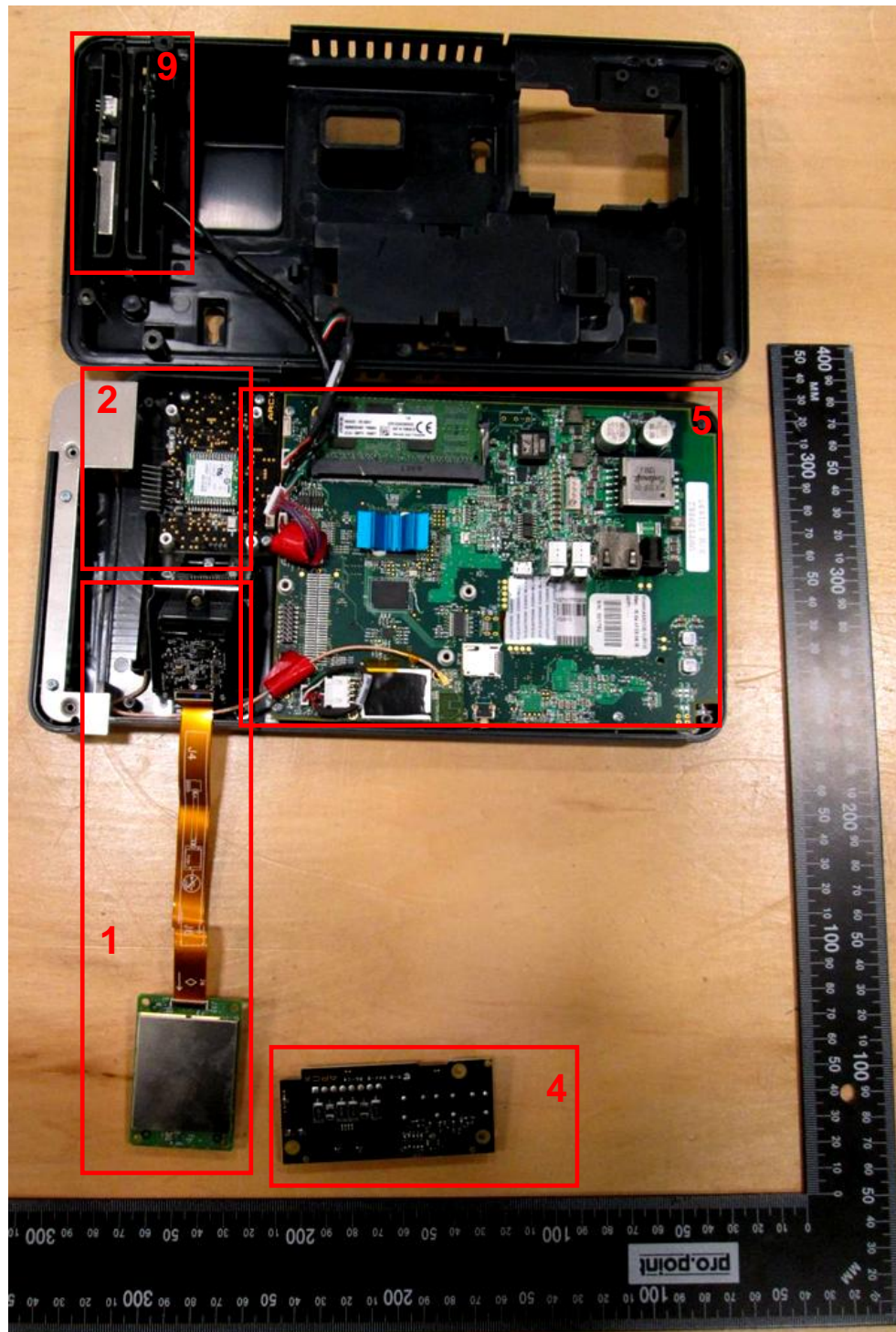


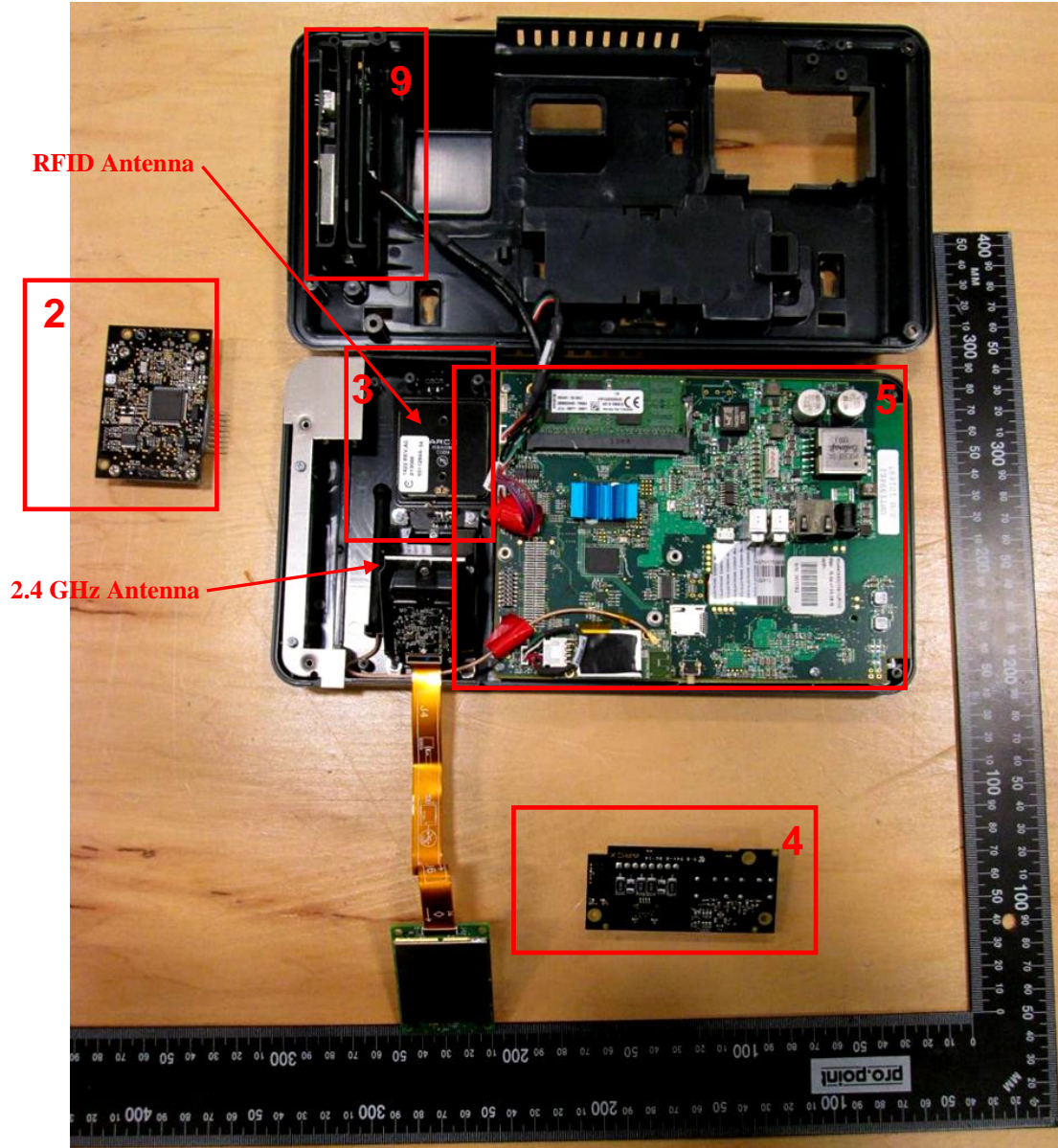
EUT – Internal view 1



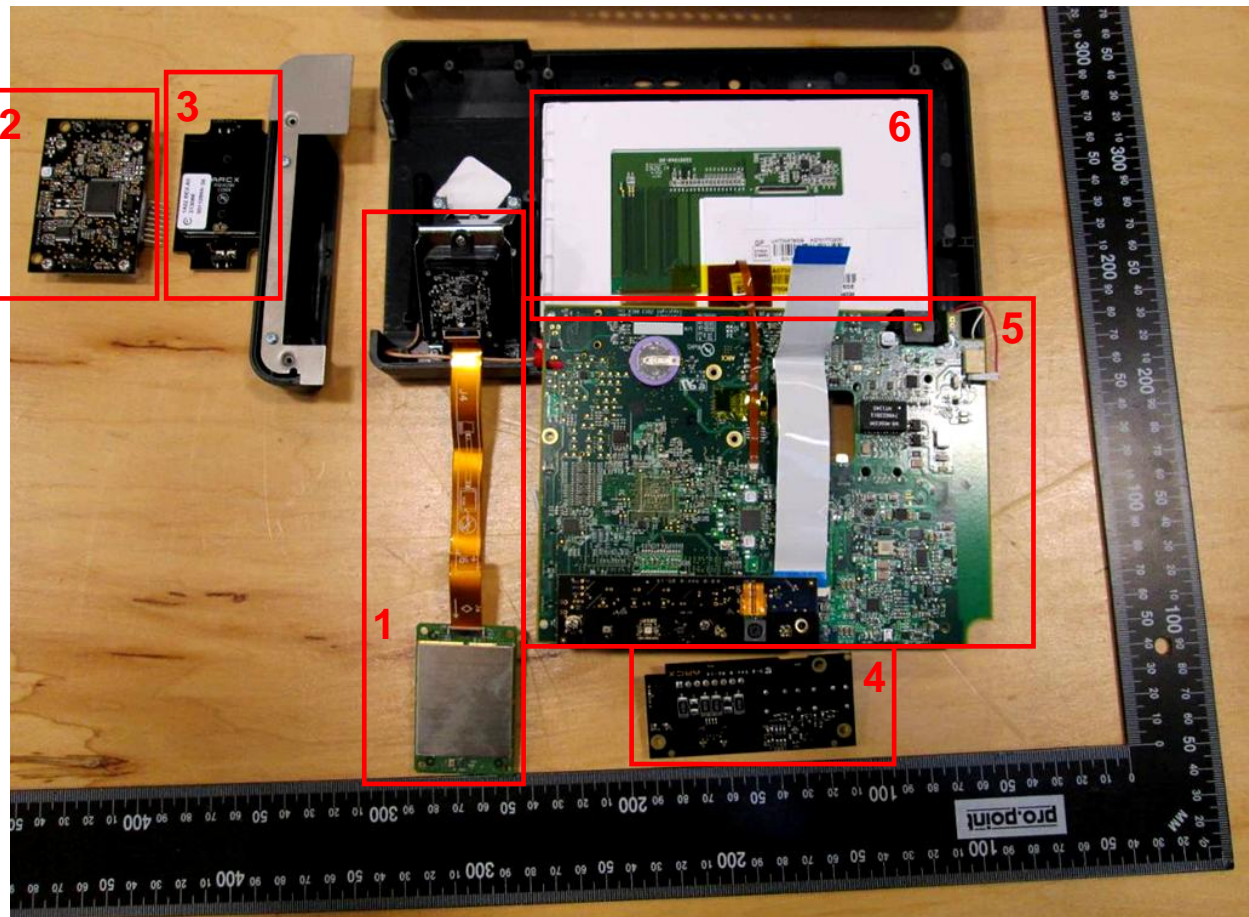
EUT – Internal view 2



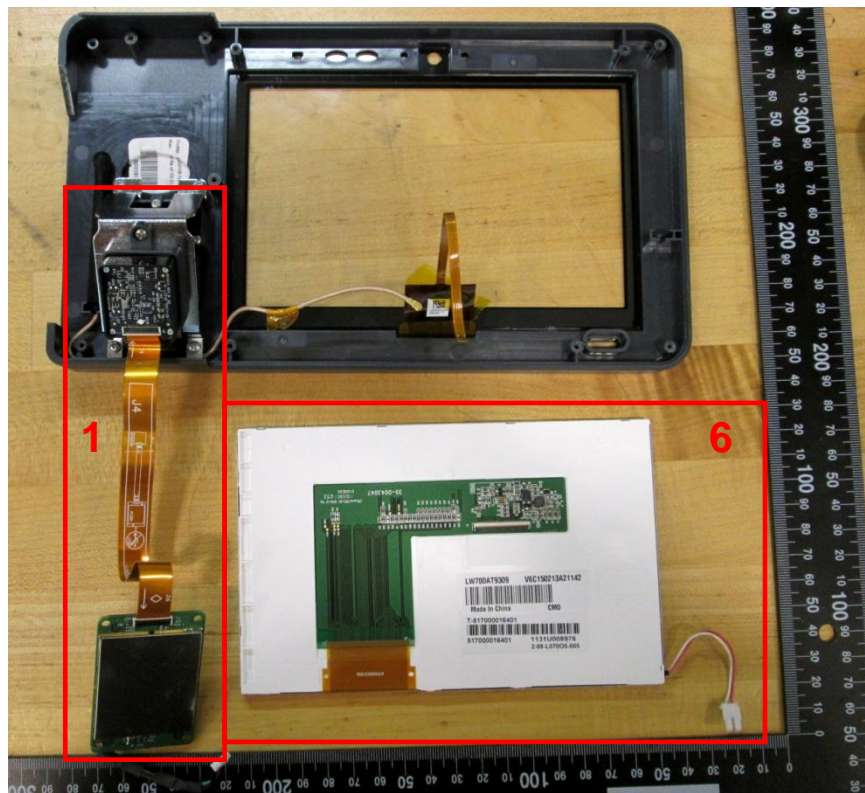
EUT – Internal view 3

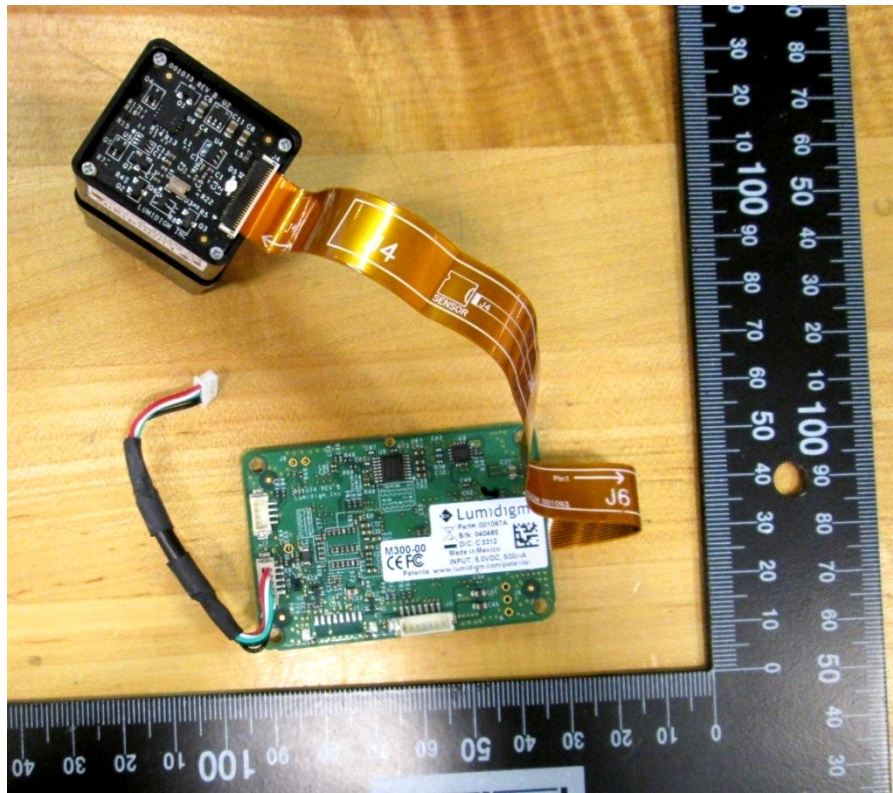


EUT – Internal view 4



EUT – Internal view 5
Board 6 (LCD screen) removed from chassis





Board #1 (fingerprint reader) as seen in photos *EUT – Internal view 1-4*



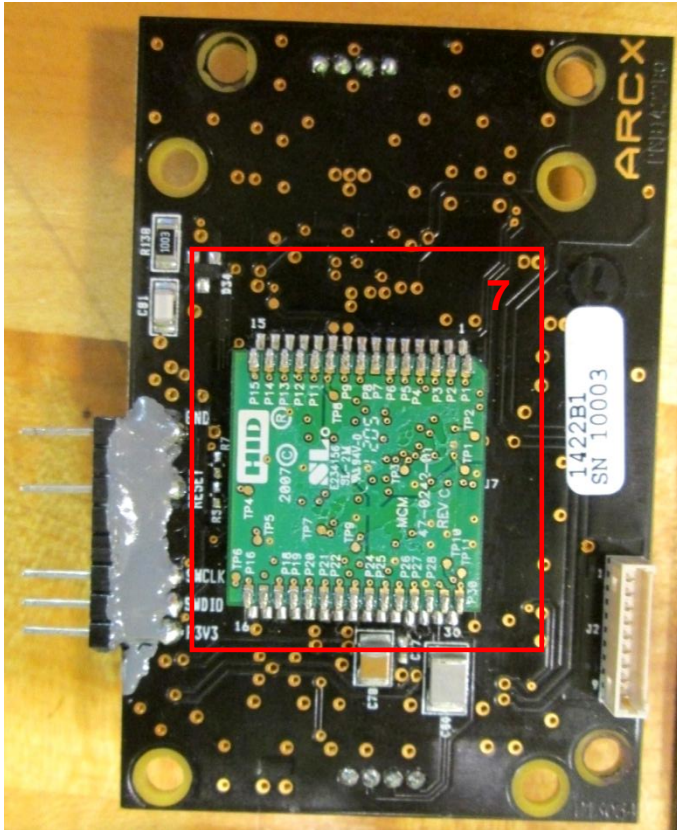
Board #1 (fingerprint reader board) as seen in photos
 EUT – Internal view 1-4
 Side 1



Board #1 (fingerprint reader board) as seen in photos
 EUT – Internal view 1-4 Side 2



Board #1 (fingerprint reader board) as seen in photos
EUT – Internal view 1-4, Side 2, shield off.



Board #2 (RFID card reader) as seen in photos
EUT – Internal view 2-4
 Side 1



Board #2 (RFID card reader) as seen in photos *EUT –*
Internal view 2-4
 Side 2



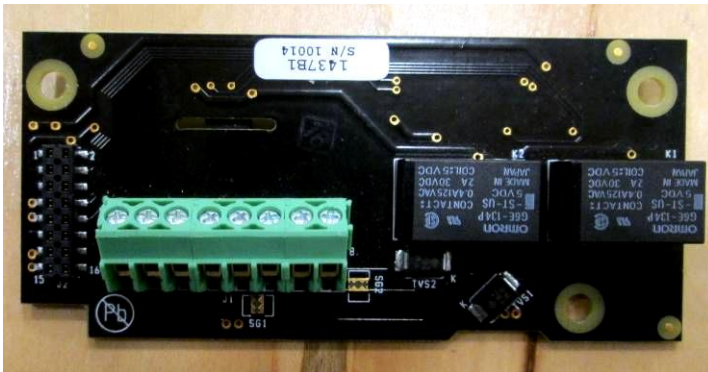
Board #7 (daughter board of Board #2) as seen in photo
 Shown above, Side 2



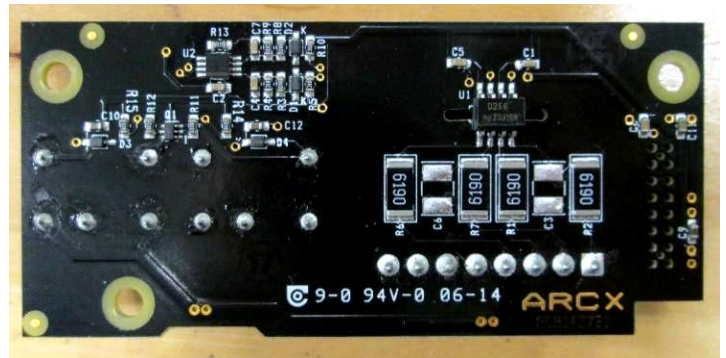
Board #3 (RFID card reader antenna) as seen in
 photos *EUT – Internal view 3-4*
 Side 1



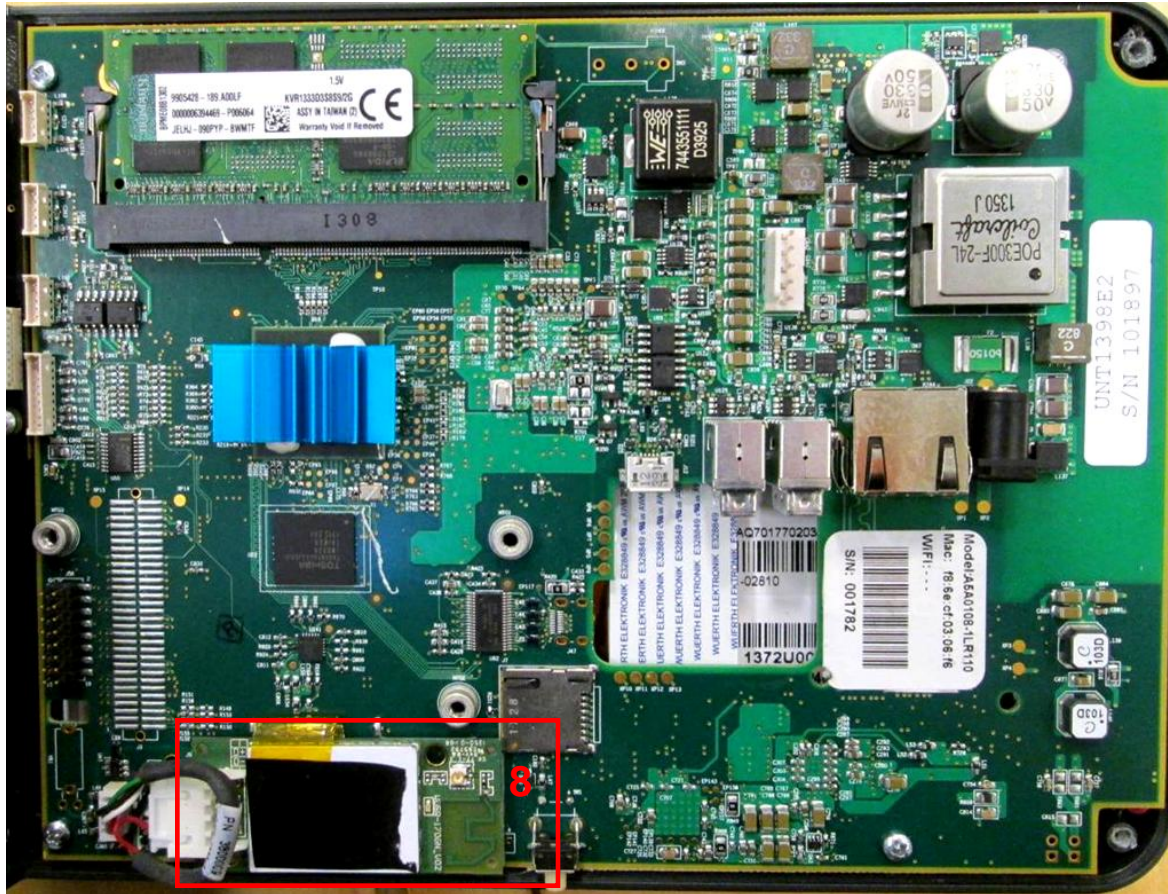
Board #3(RFID card reader antenna) as seen in
 photos *EUT – Internal view 3-4*
 Side 2



Board #4 (relay board) as seen in photos
EUT – Internal view 1-4
 Side 1



Board #4 (relay board) as seen in photos
EUT – Internal view 1-4
 Side 2



Board #5 (mainboard) as seen in photos *EUT – Internal view 1-4*
Side 1



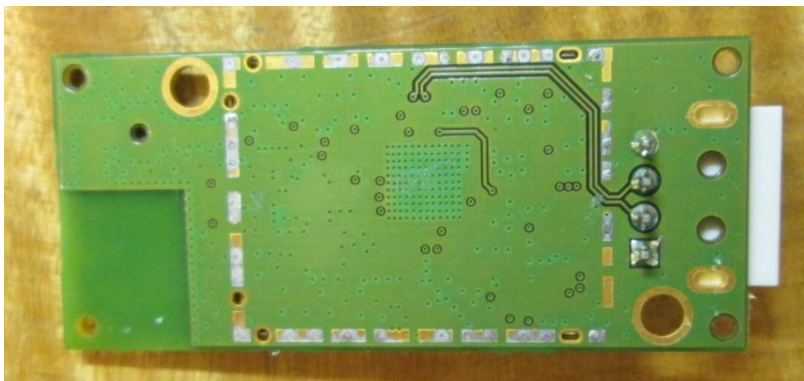
Board #8 (2.4GHz board) as seen in previous photo.
Side 1.



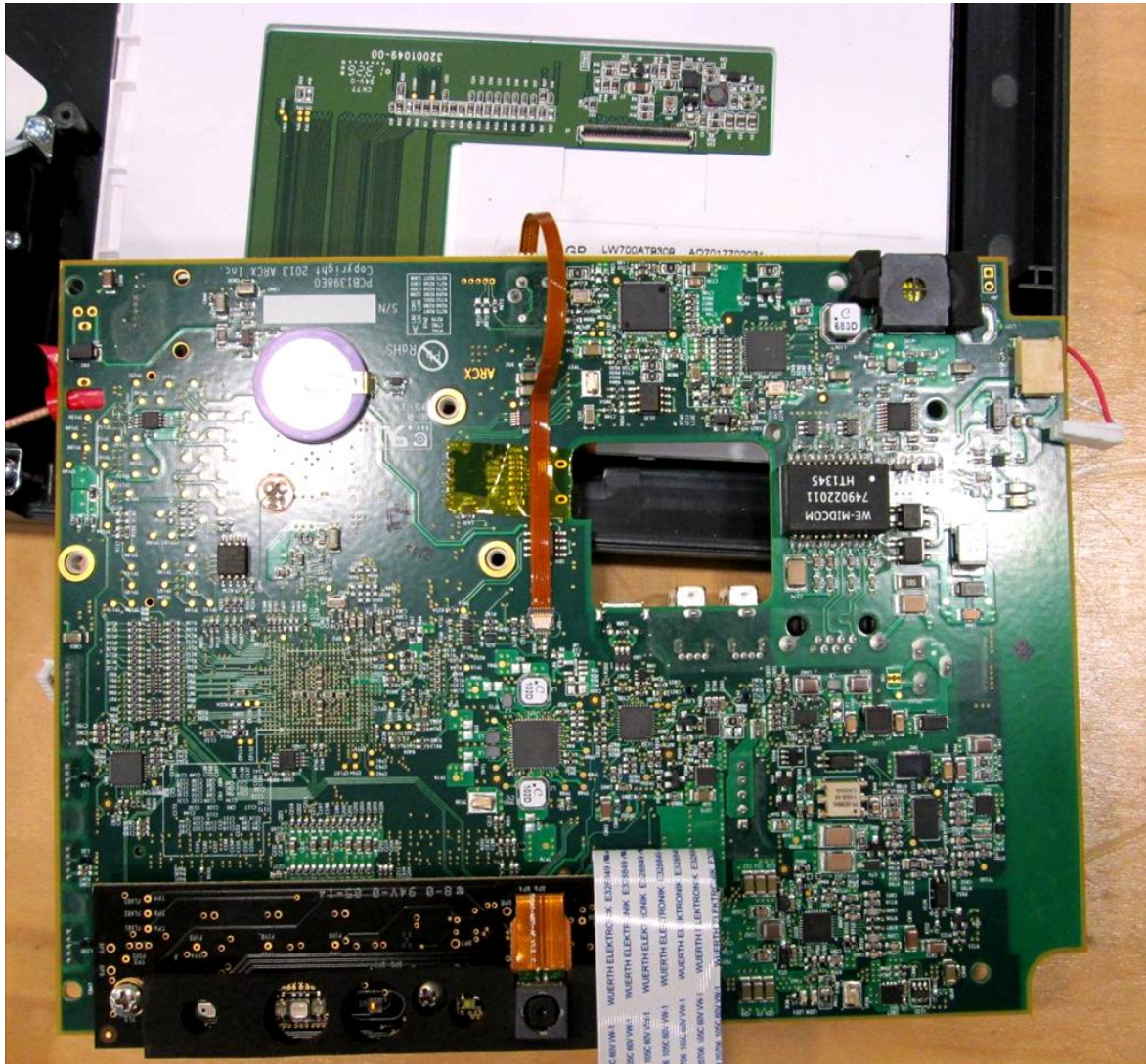
Board #8 (2.4GHz board), Shown with antenna connected.



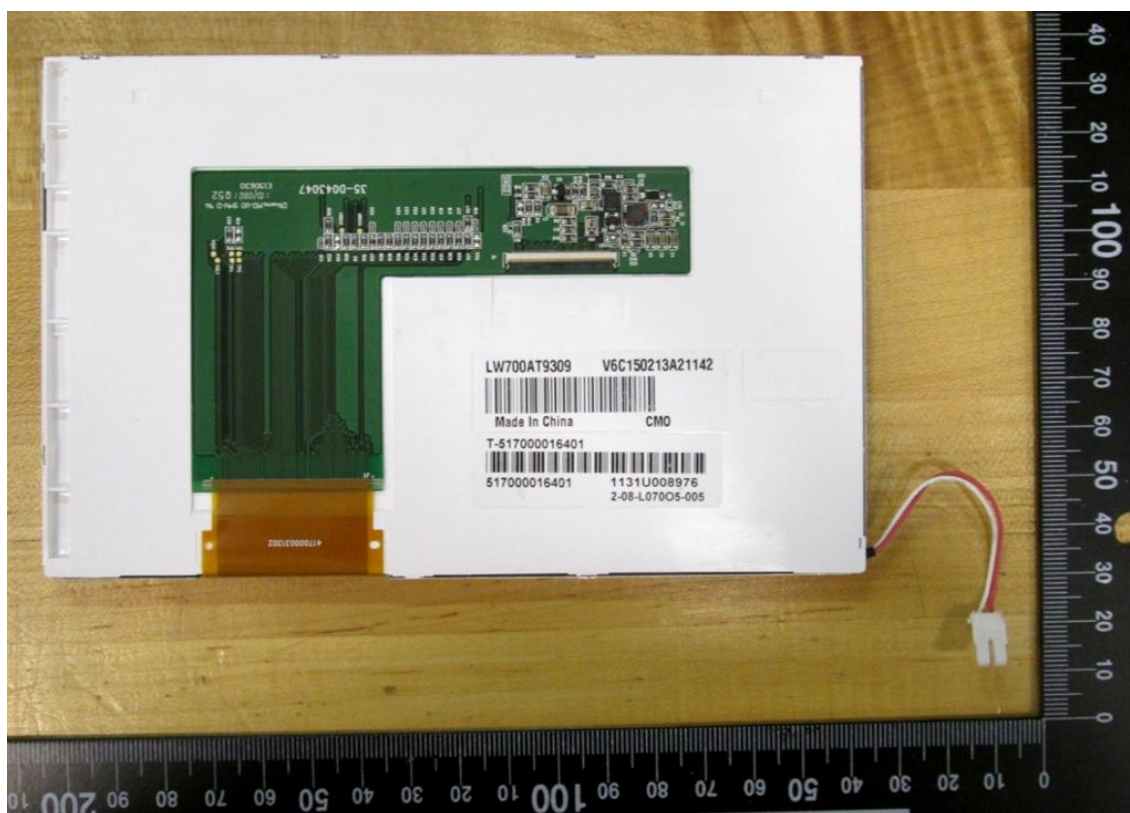
Board #8 (2.4GHz board), Side 1, Shield removed



Board #8 (2.4GHz board), Side 2



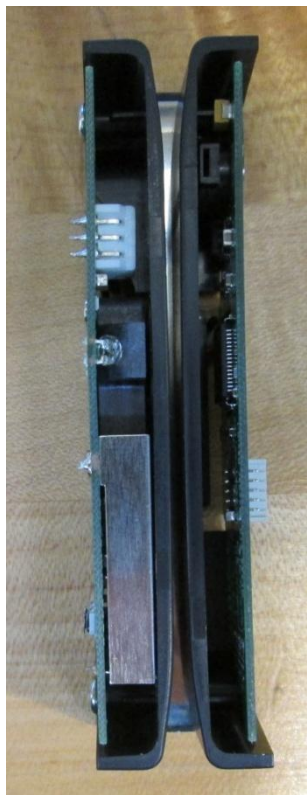
Board #5 (mainboard) as seen in photos *EUT – Internal view 1-4*
Side 2



Board #6 (LCD panel) as seen in photos *EUT – Internal view 4 & 5*
Side 1



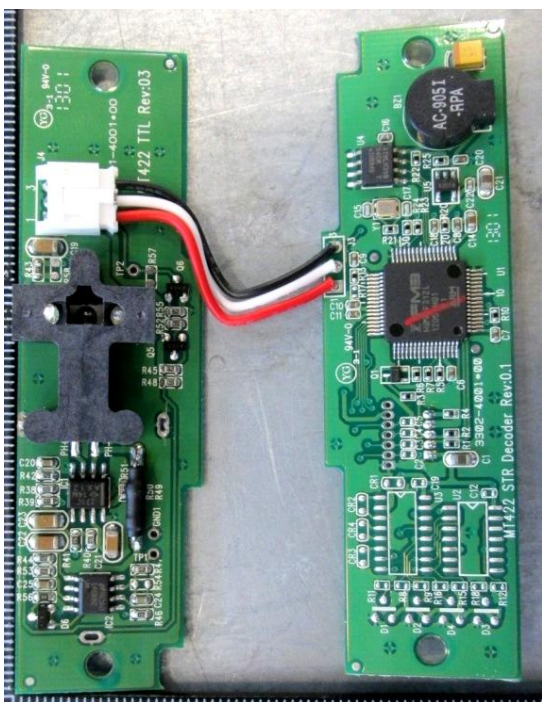
Board #6 (LCD panel) as seen in photos *EUT – Internal view 4 & 5*
Side 2



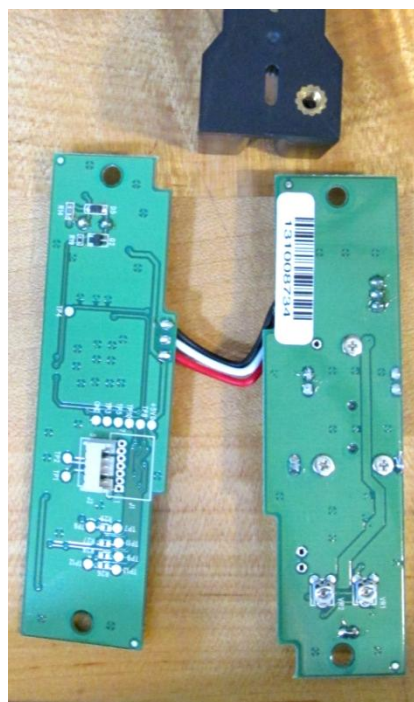
Board #9 (magnetic card reader) as seen in photos
EUT – Internal view 1-3



Board #9 (magnetic card reader)
Side 1



Board #9 (magnetic card reader)
Side 1, shield removed



Board #9 (magnetic card reader)
Side 2