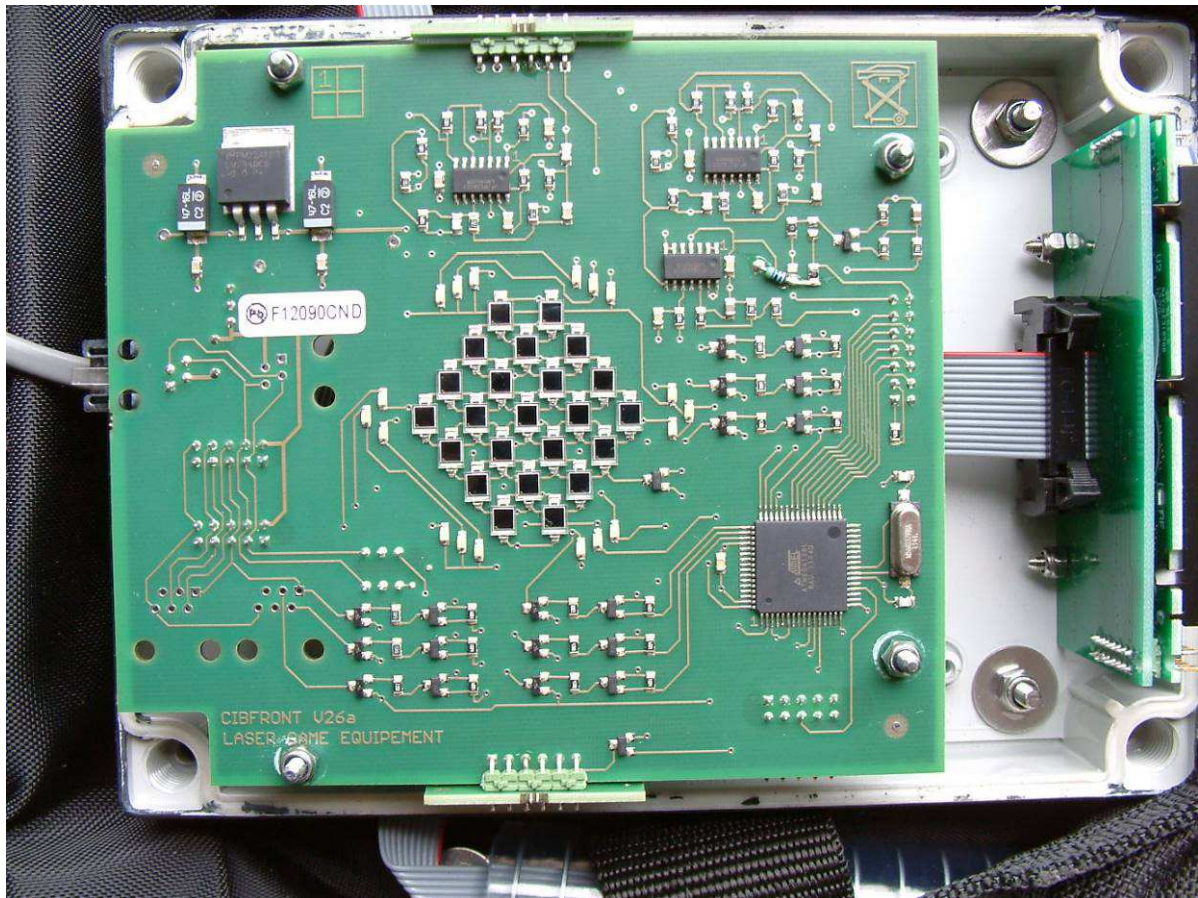
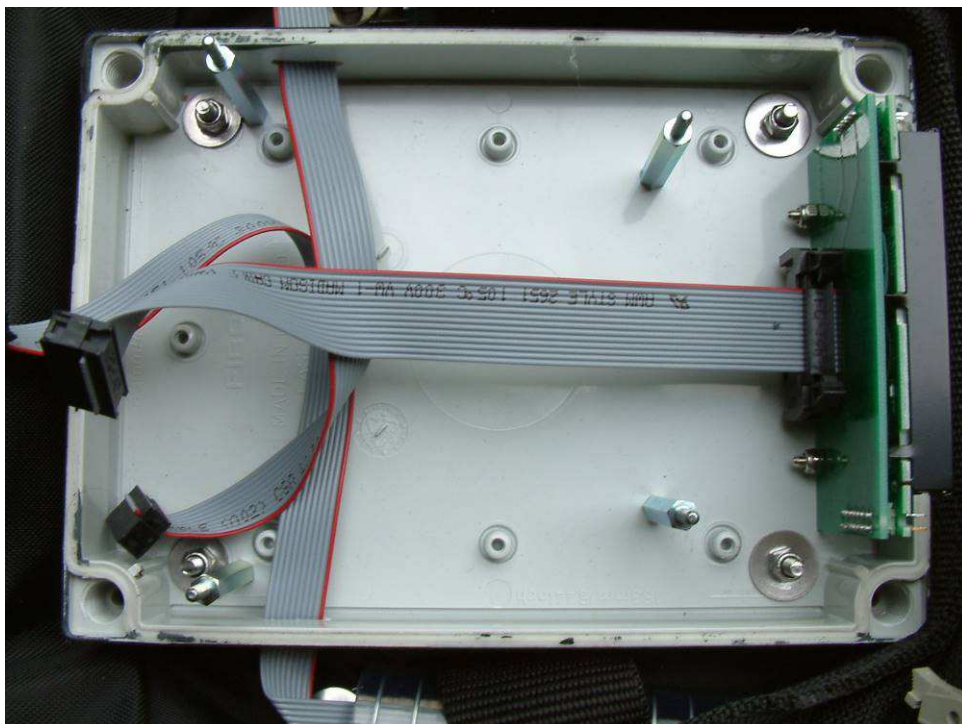


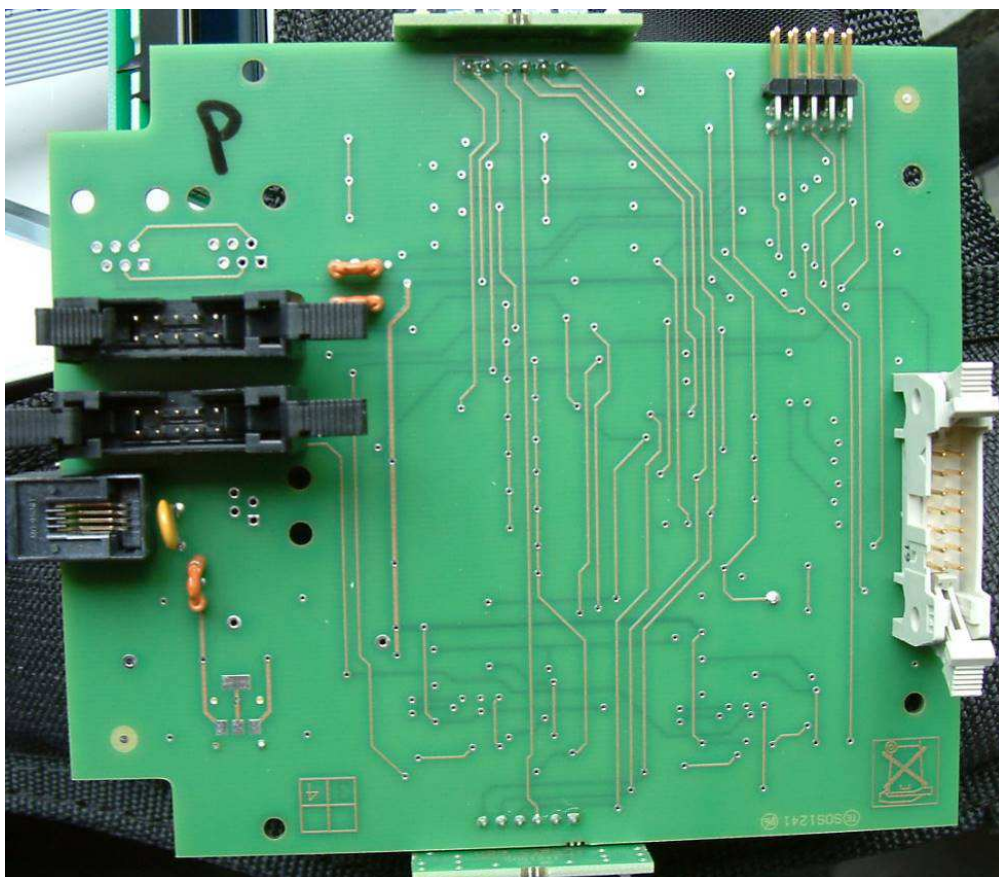
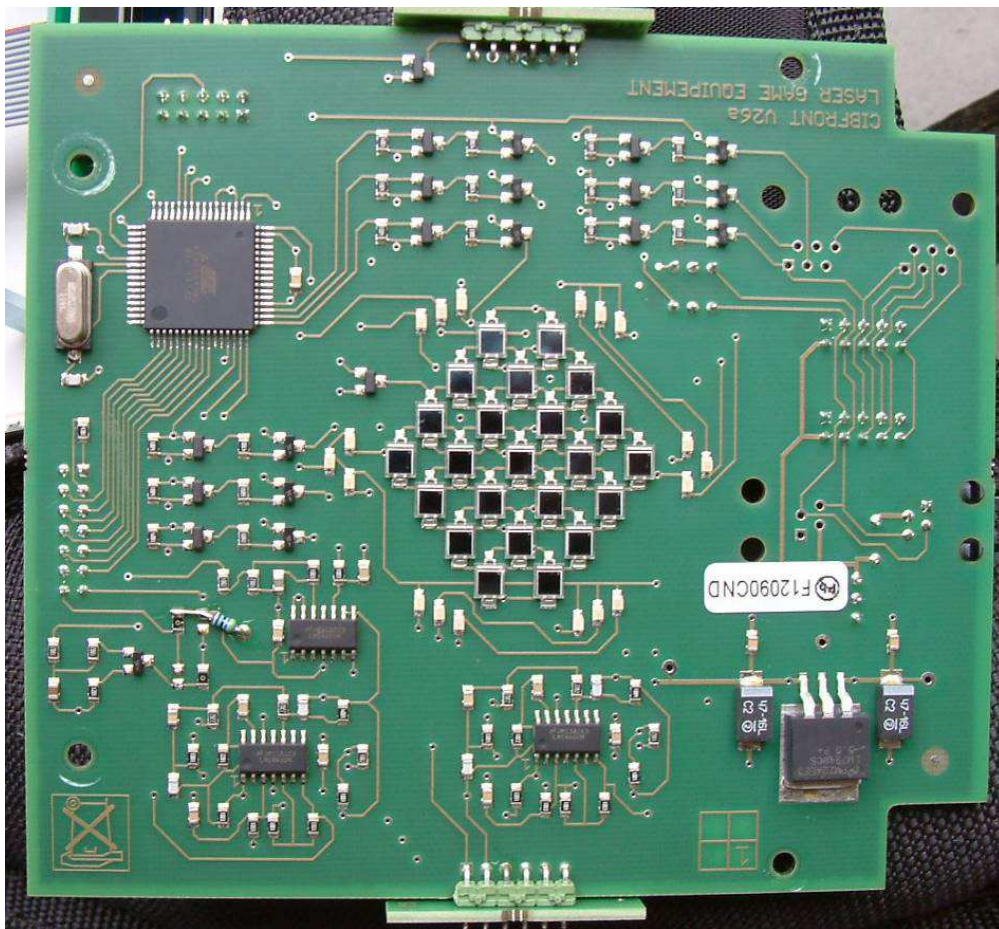
INTERNAL PHOTOS OF TESTED EUT



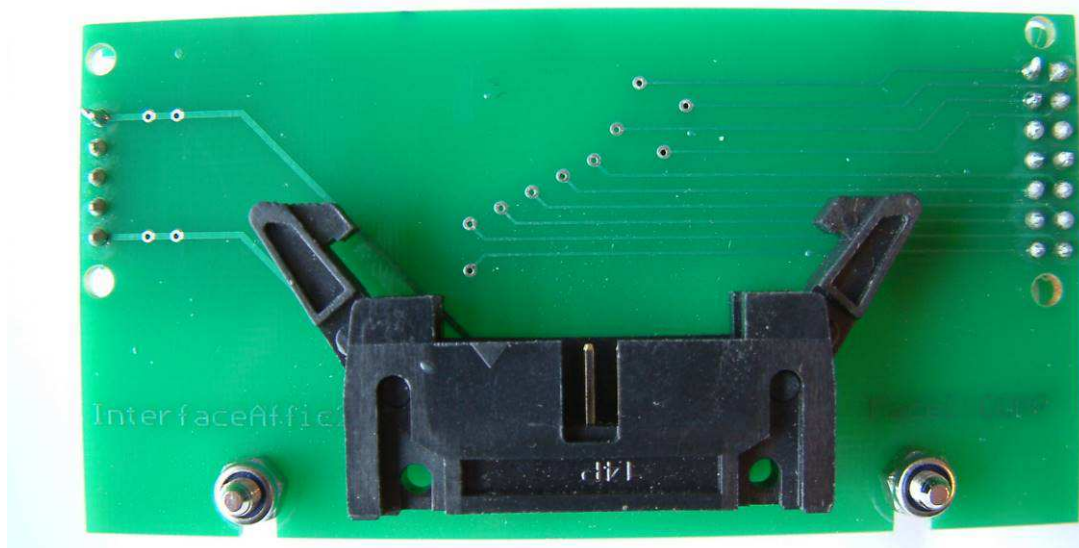
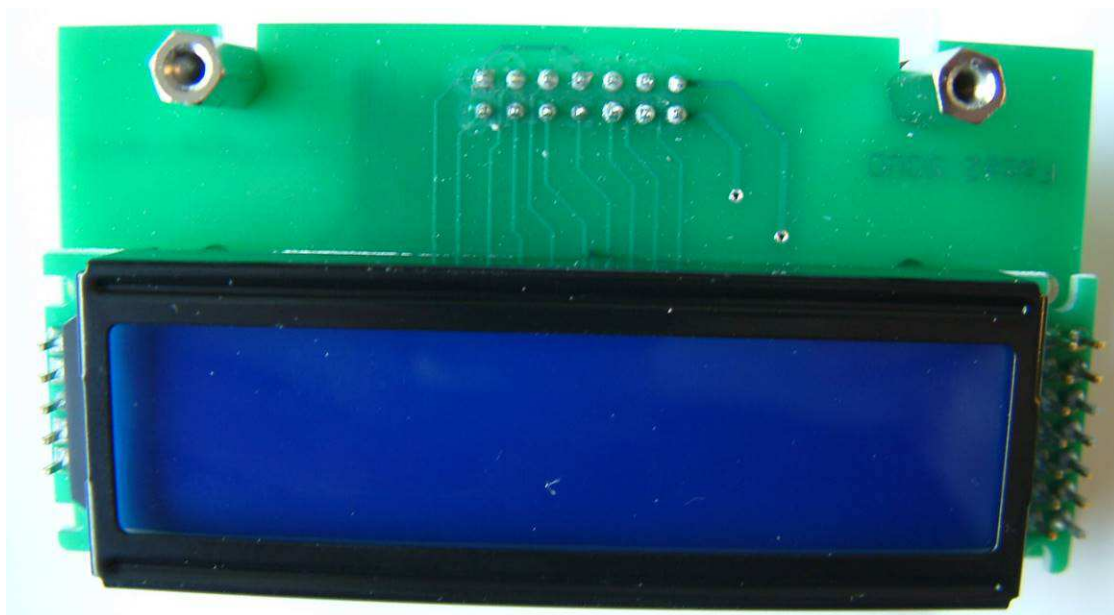
Front box (Cover removed)



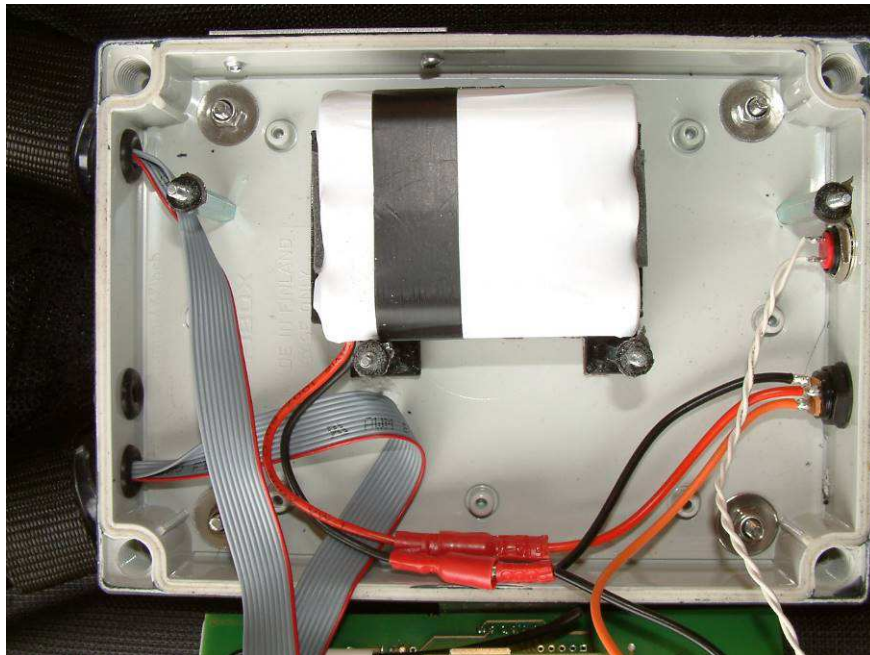
Front box (PCB removed)



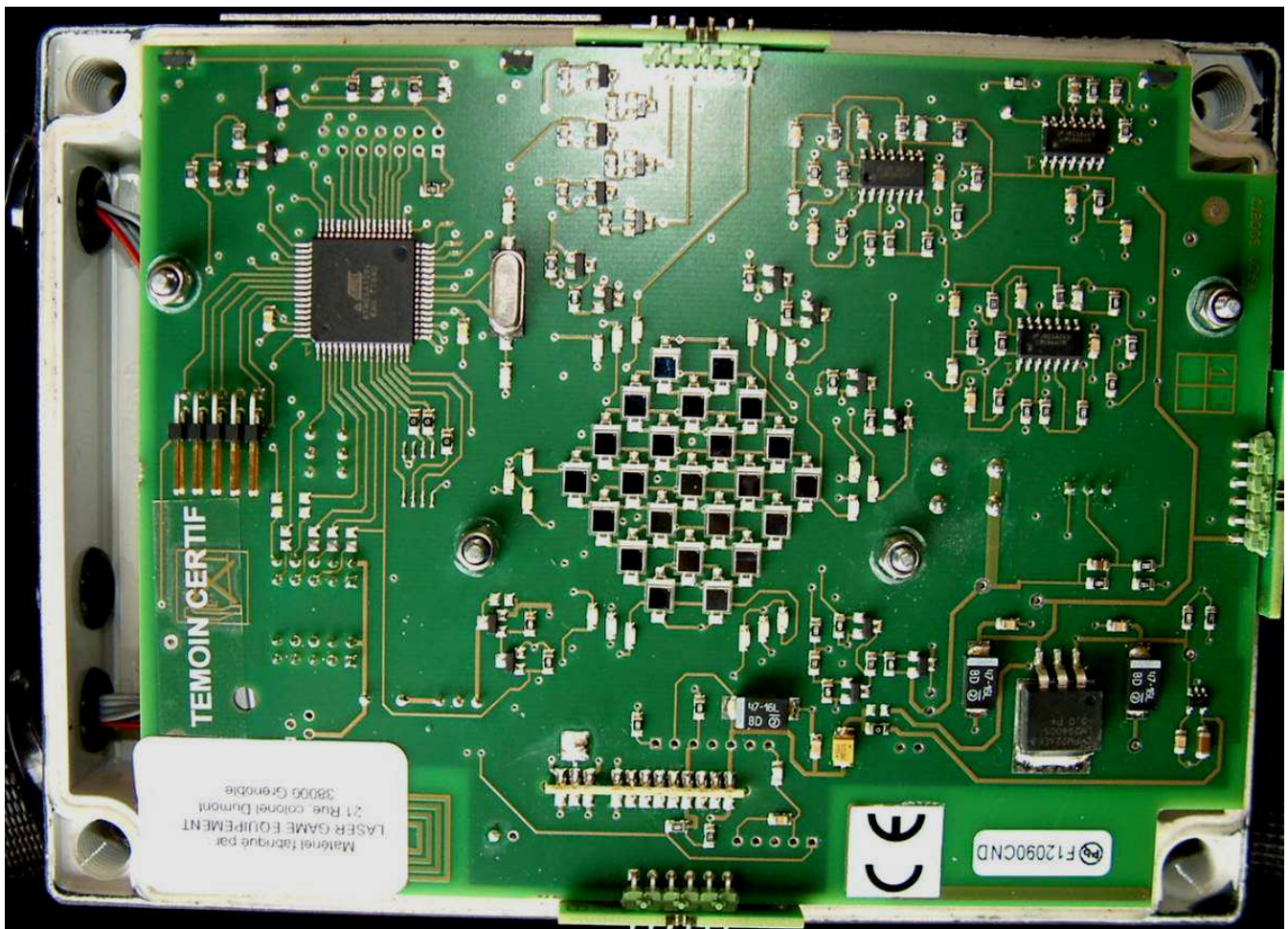
Front PCB



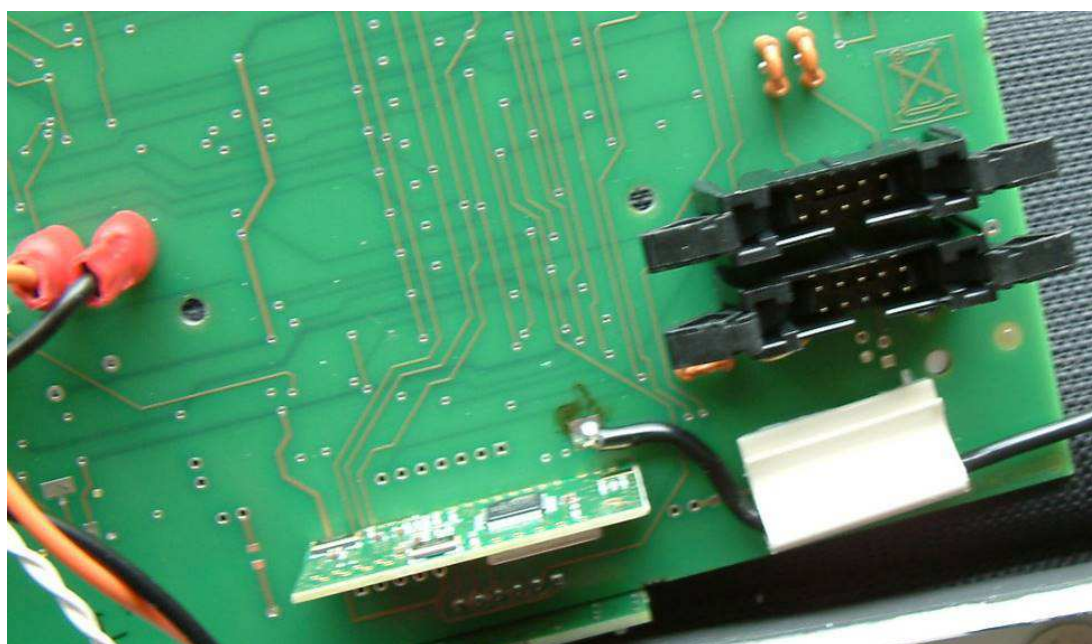
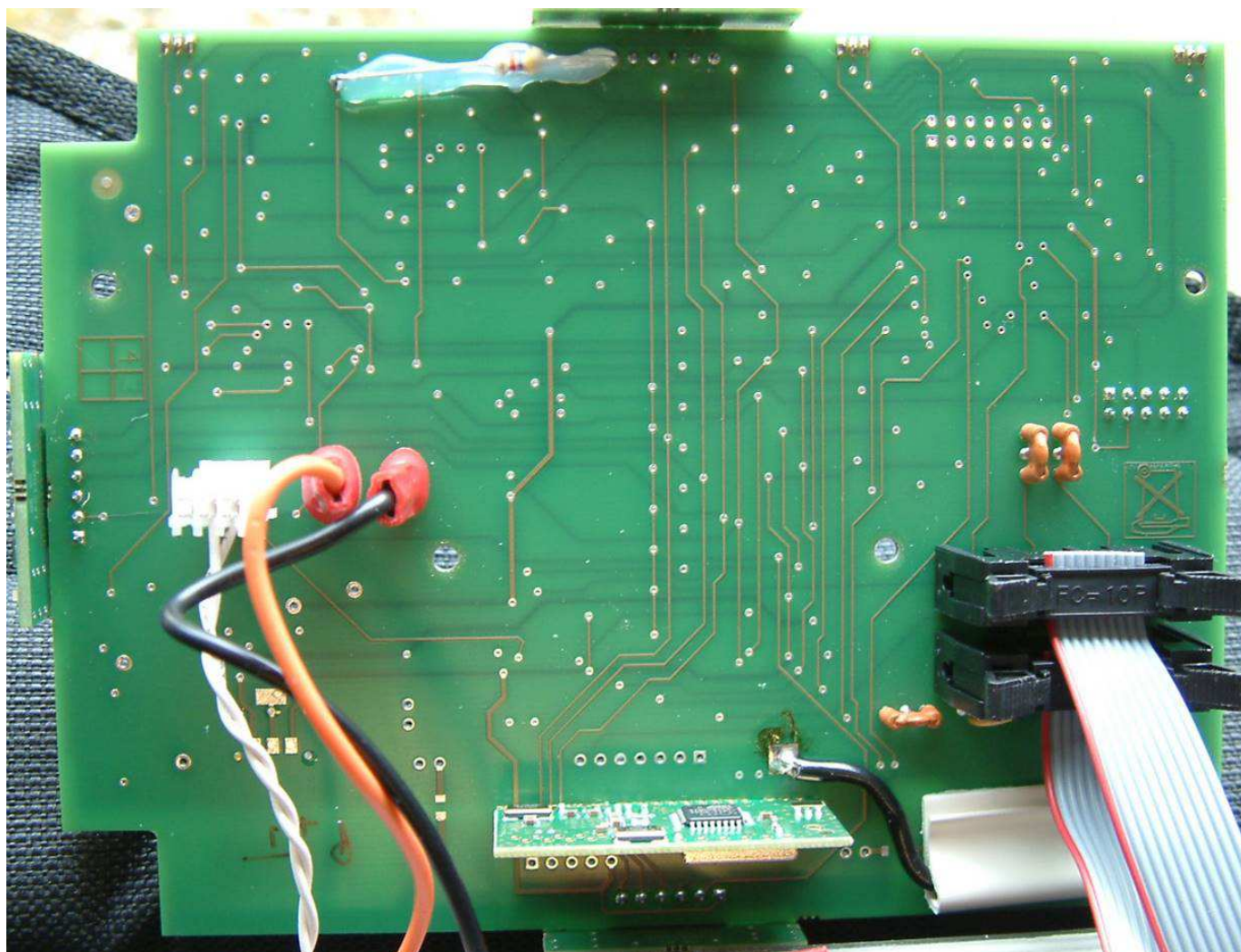
Display (PCB)



Rear box (PCB removed)



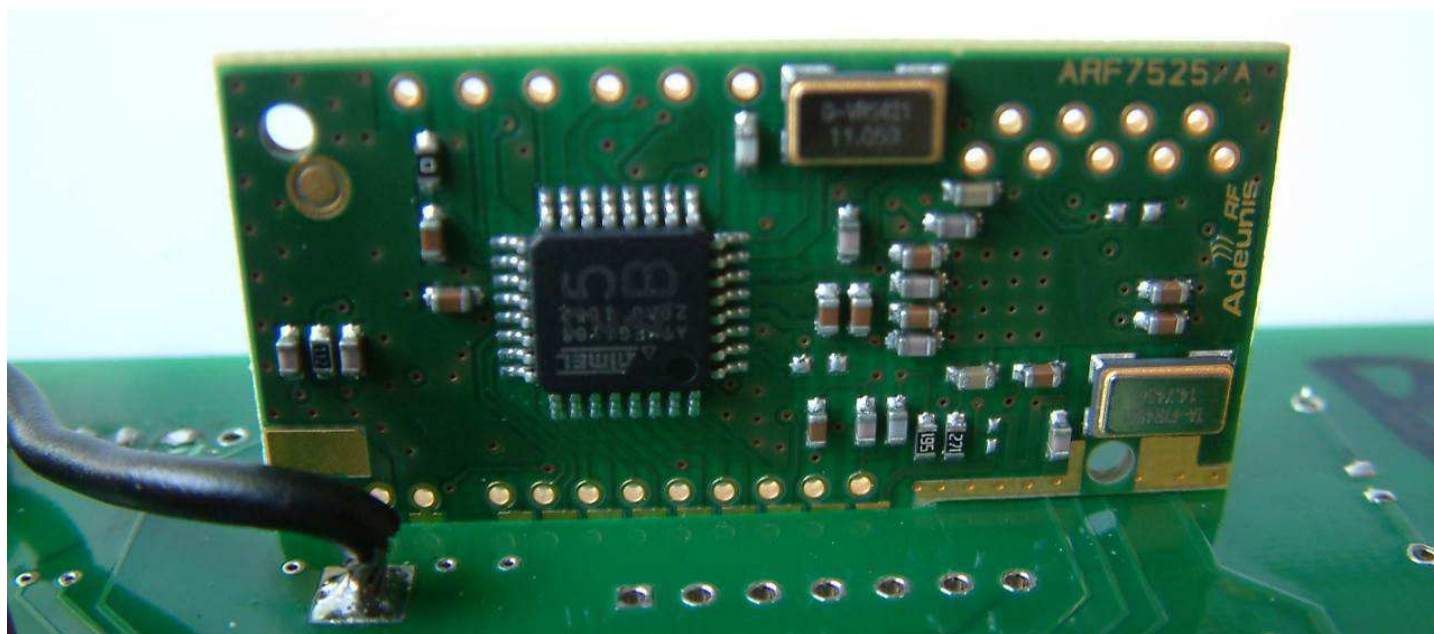
Rear box (PCB)



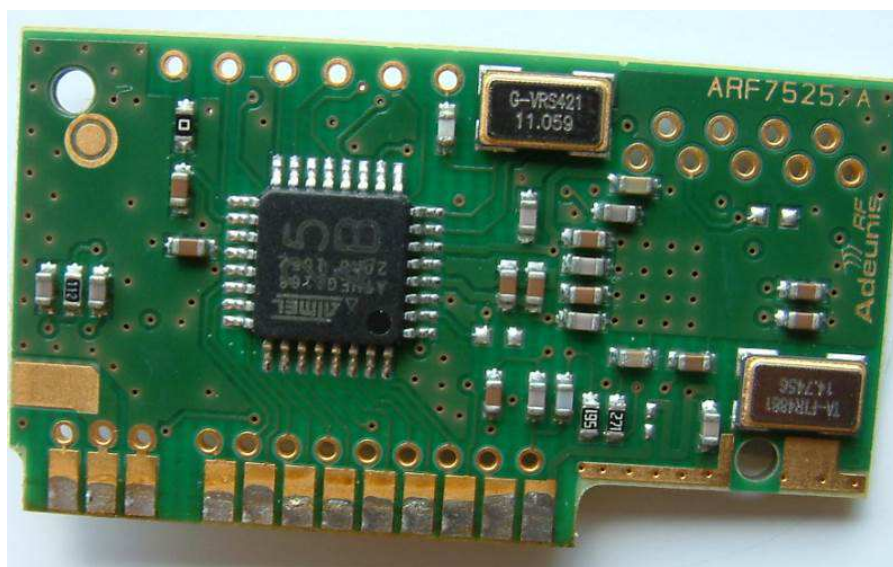
Rear box (PCB + antenna detail)



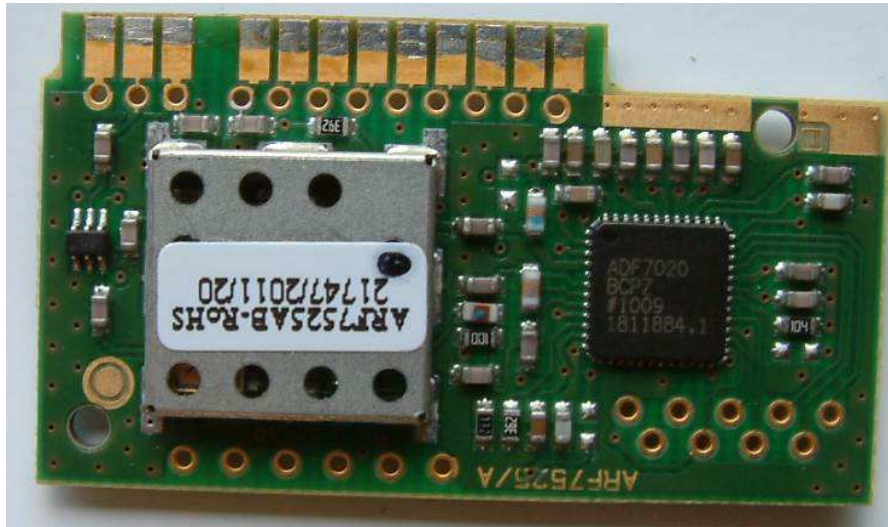
Laser detectors on PCB edges



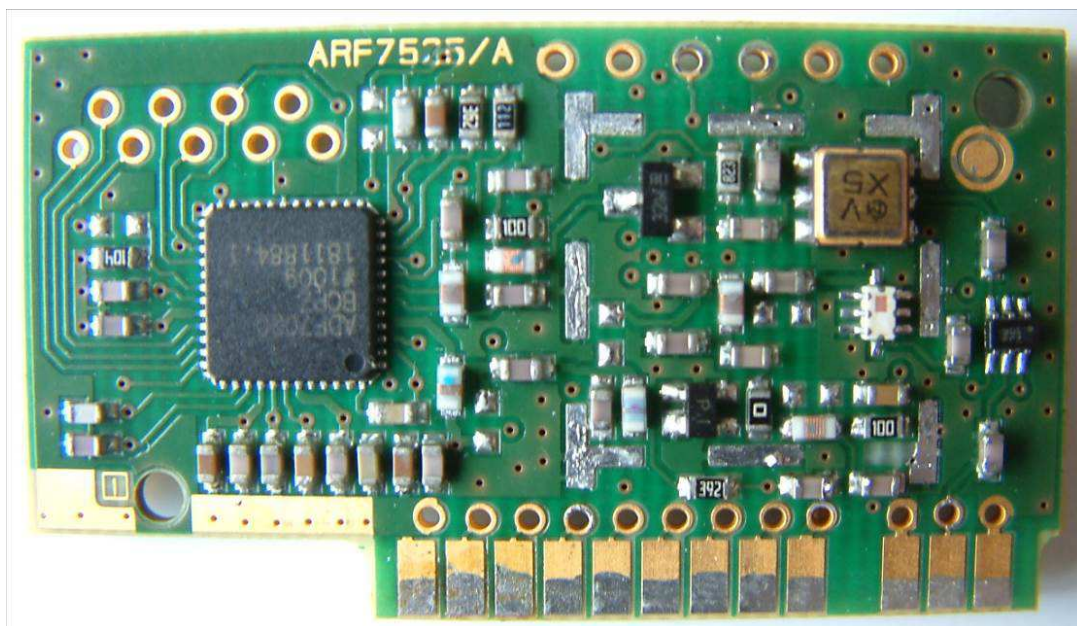
RF Module



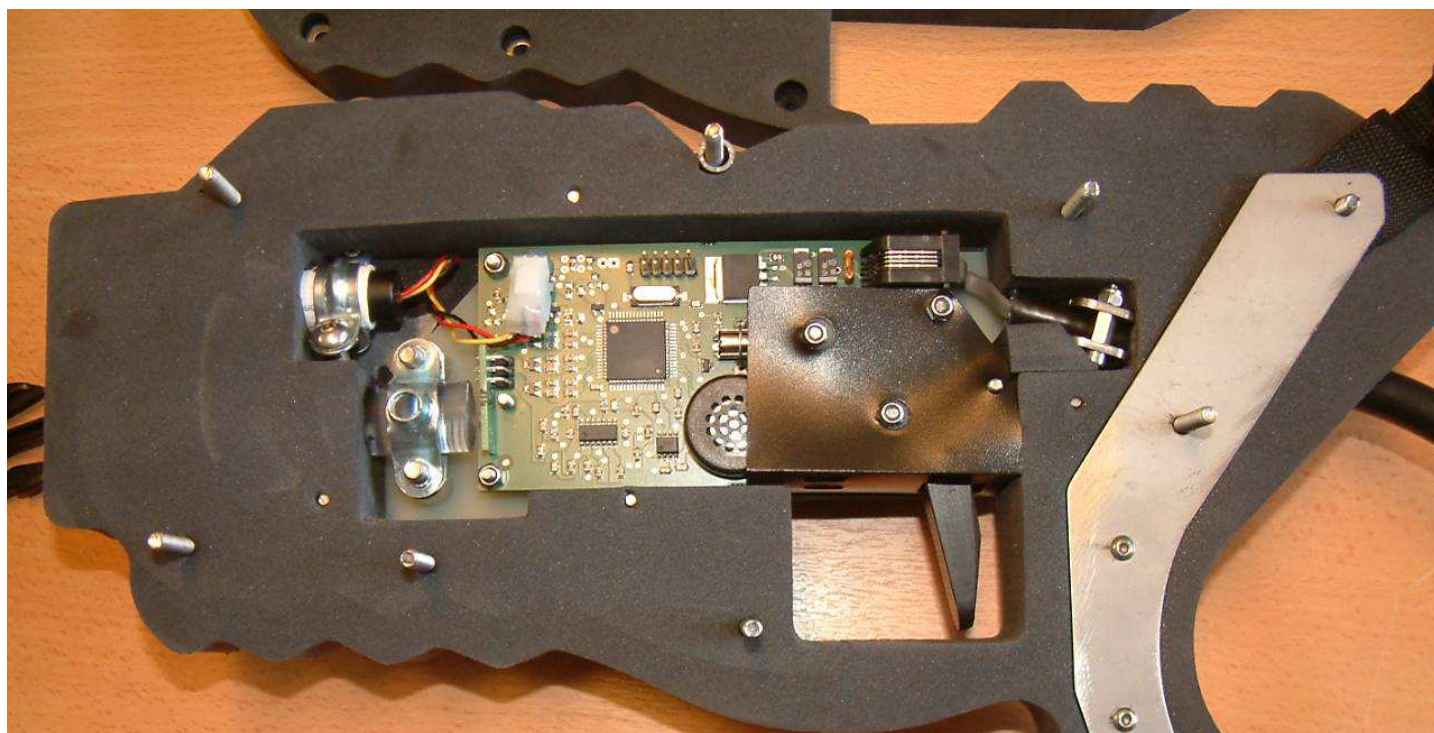
Detailed view of RF module



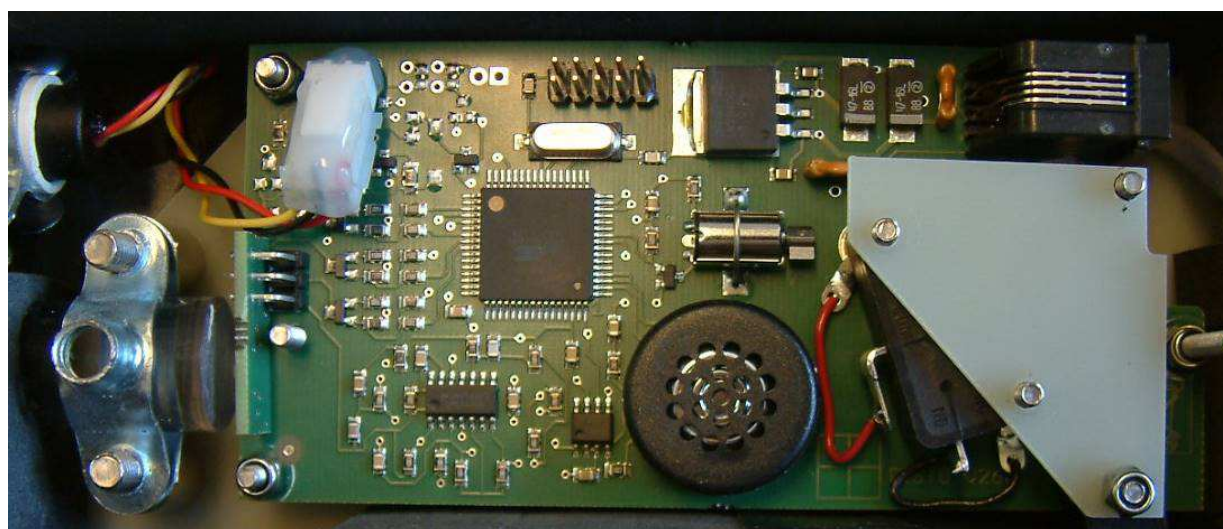
Detailed view of RF module



RF module without cover shield



Internal view of laser gun



PCB (Laser gun)