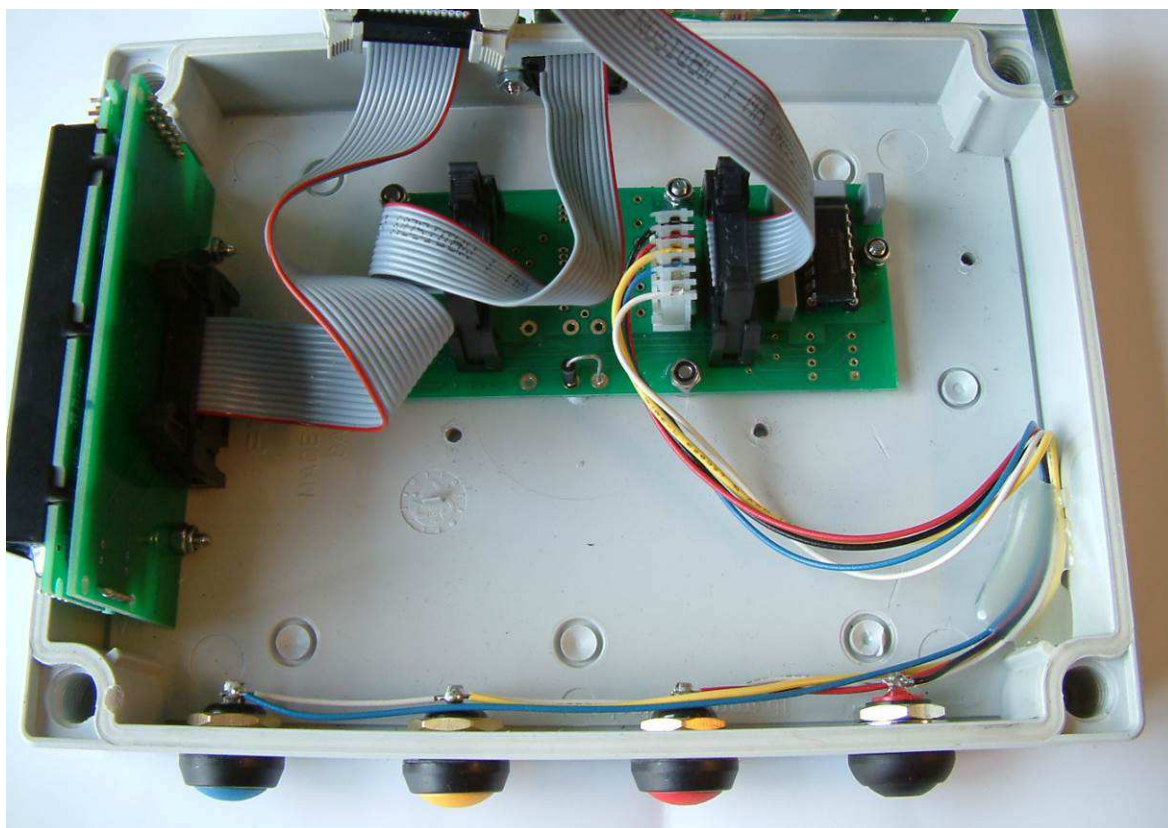
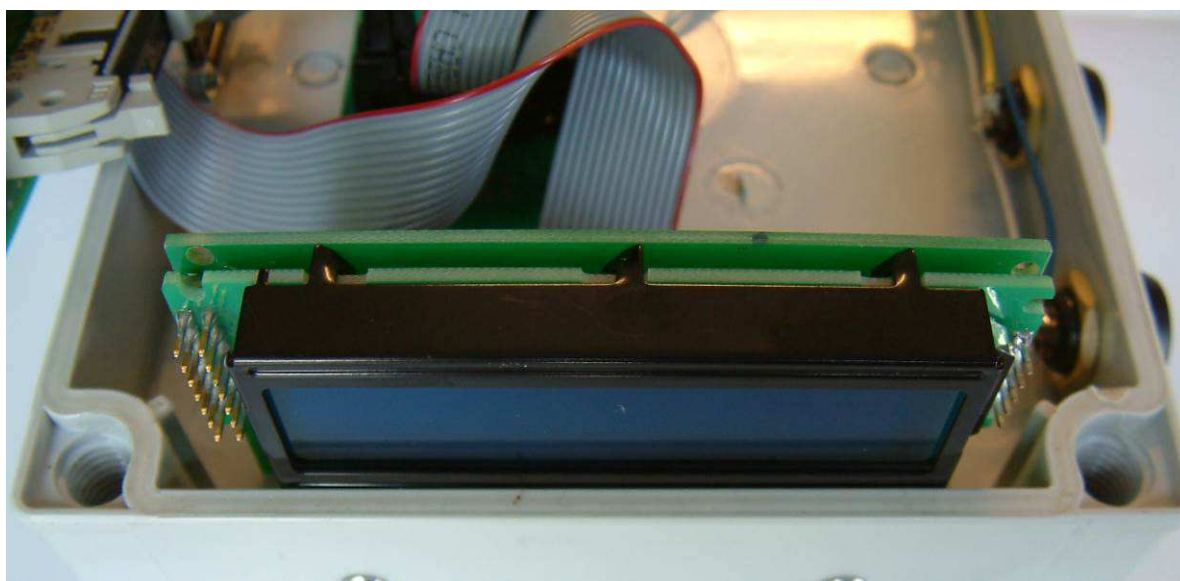


**INTERNAL PHOTOS OF TESTED EUT**

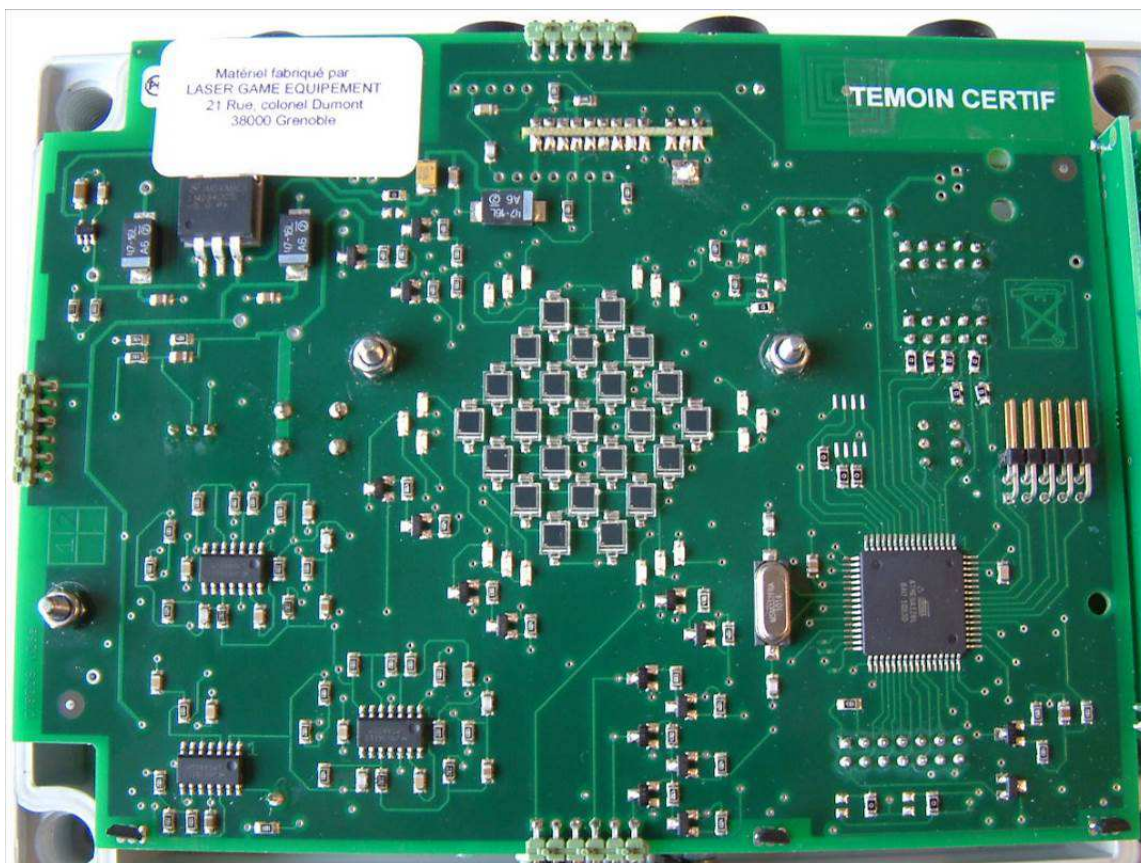


Internal view (PCB removed)

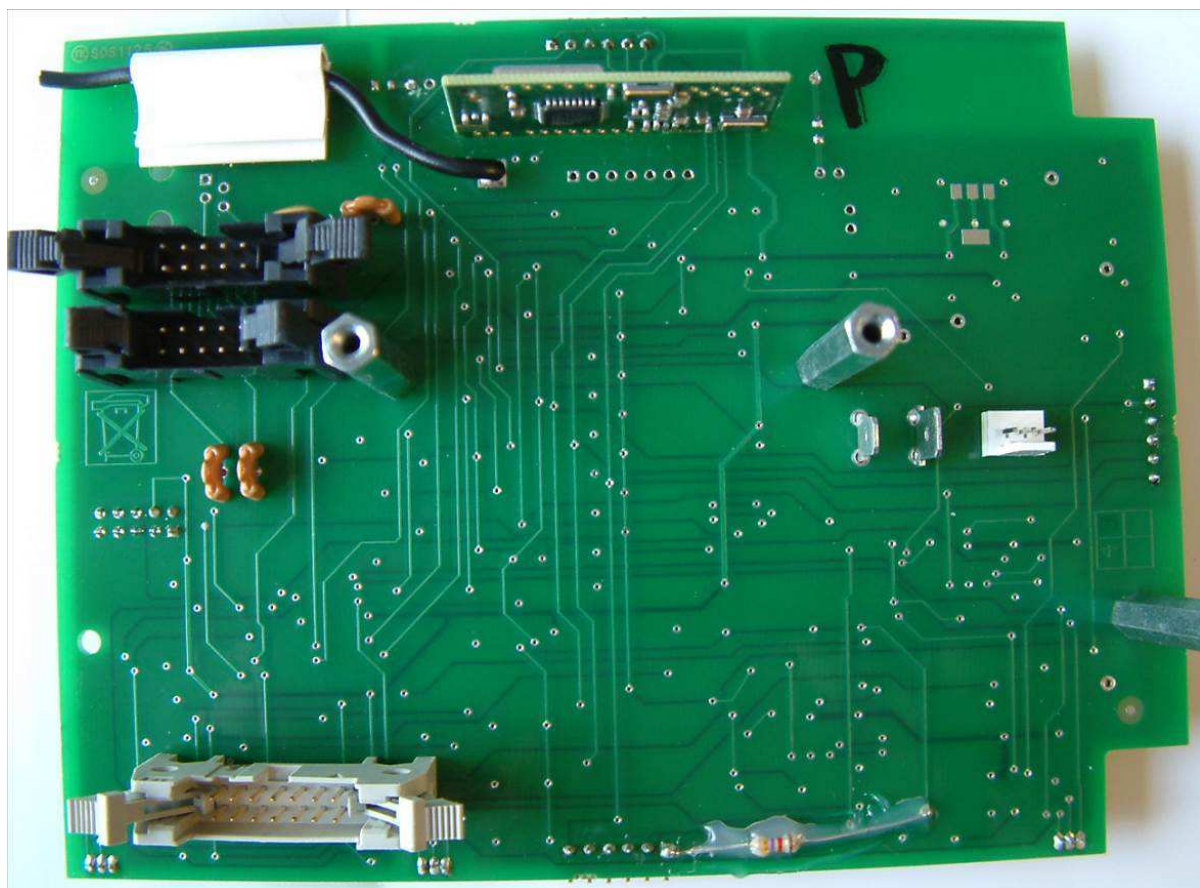


Display

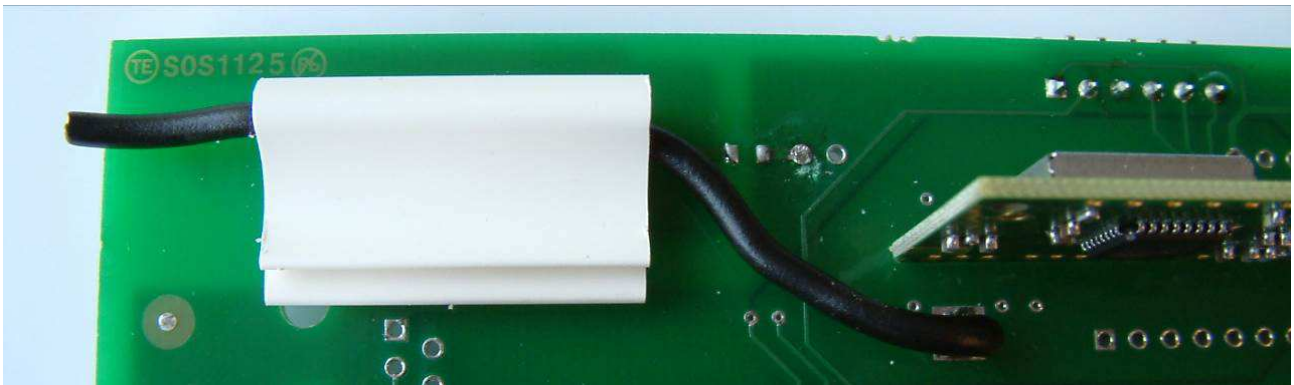




Main PCB (Upper side)



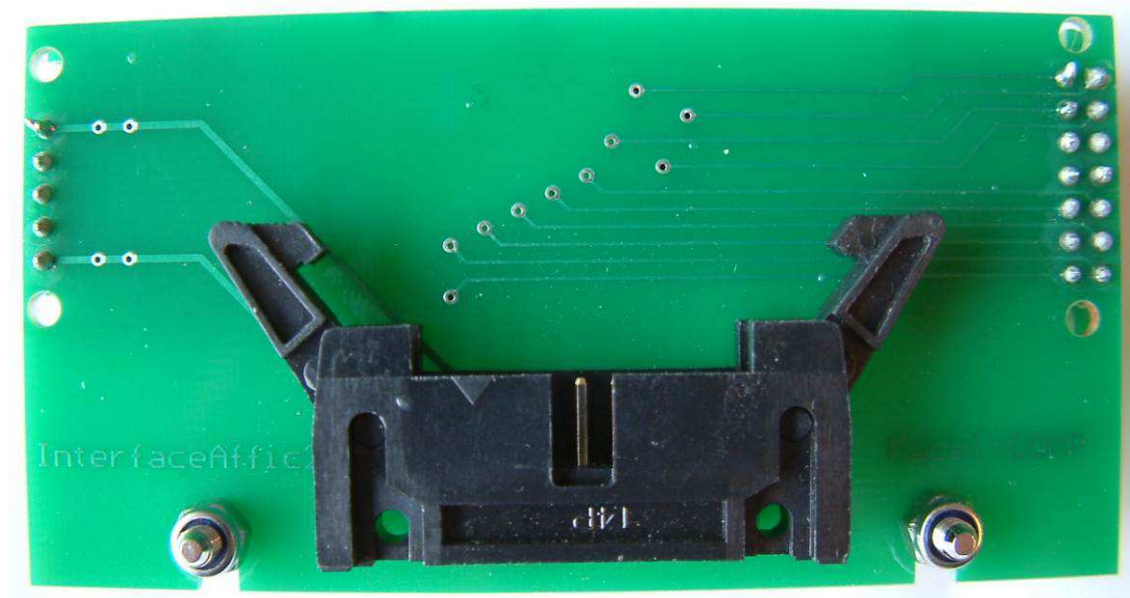
Main PCB (Rear side)



Antenna detail

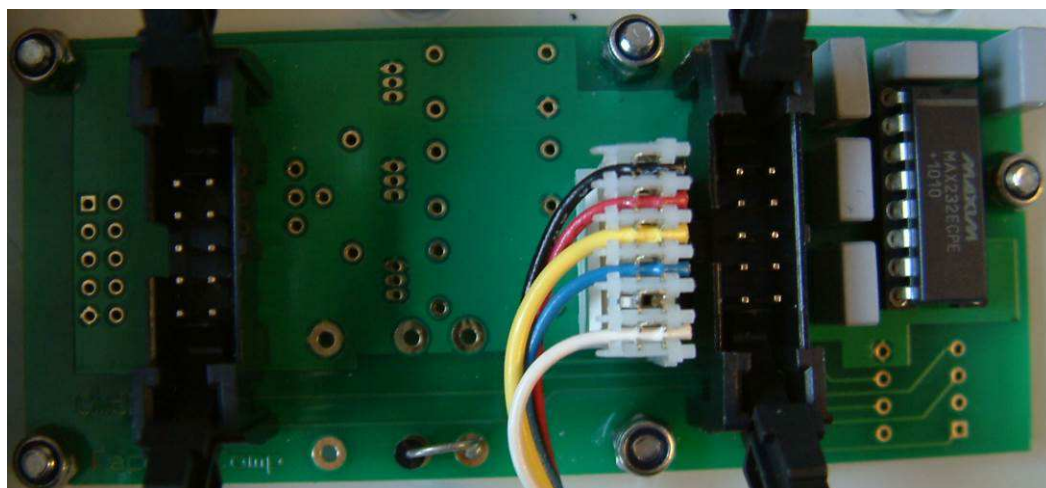


LCD PCB

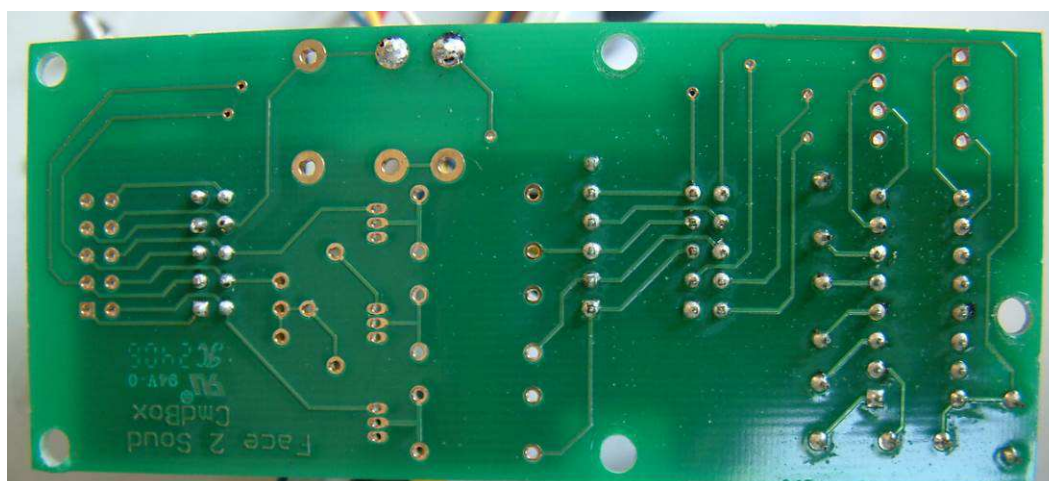


LCD PCB (Rear side)

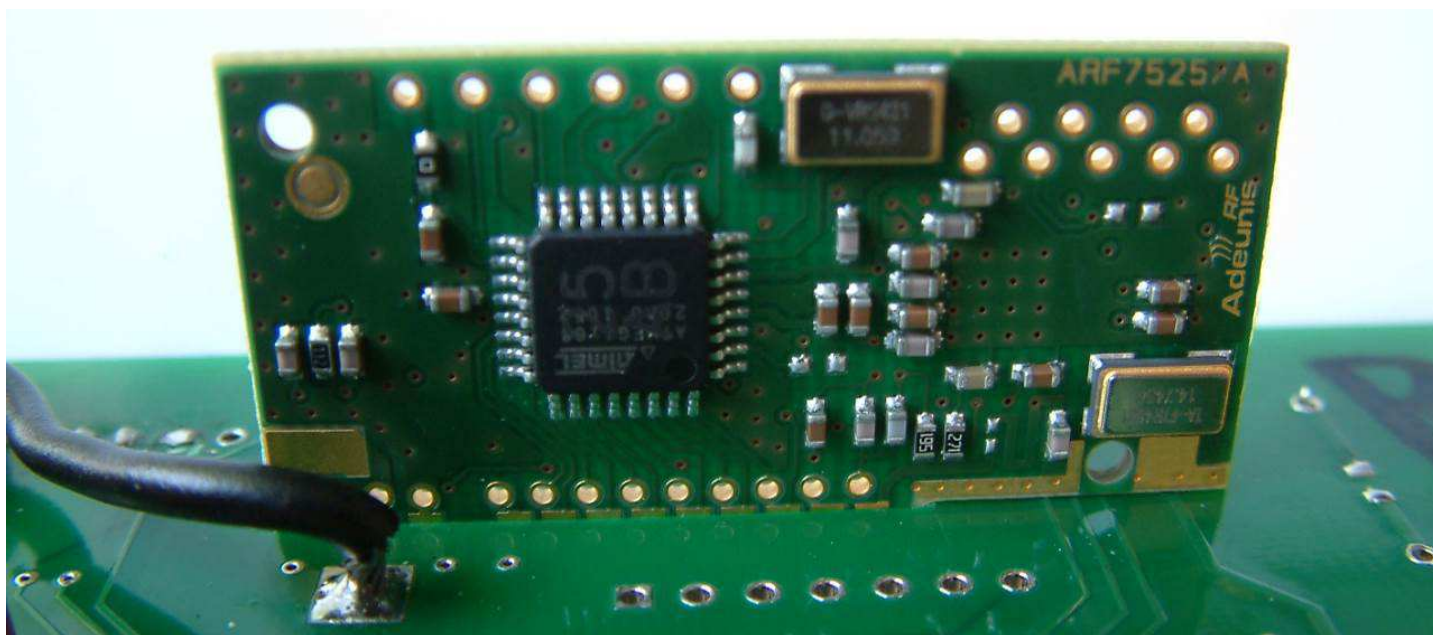




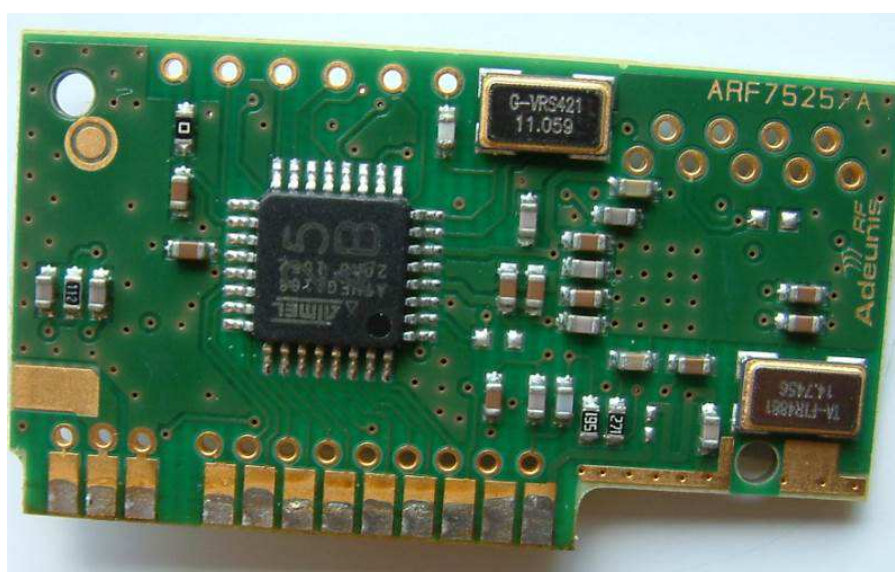
Connection PCB



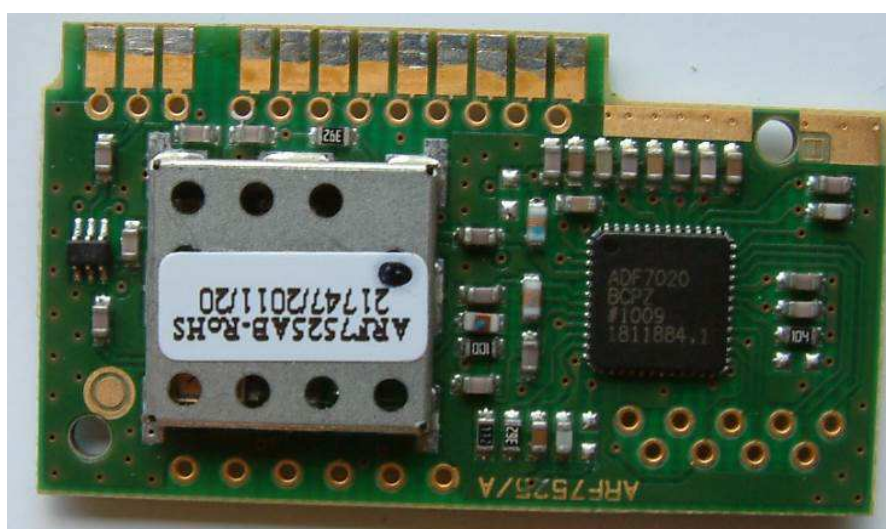
Connection PCB (Rear side)



RF Module

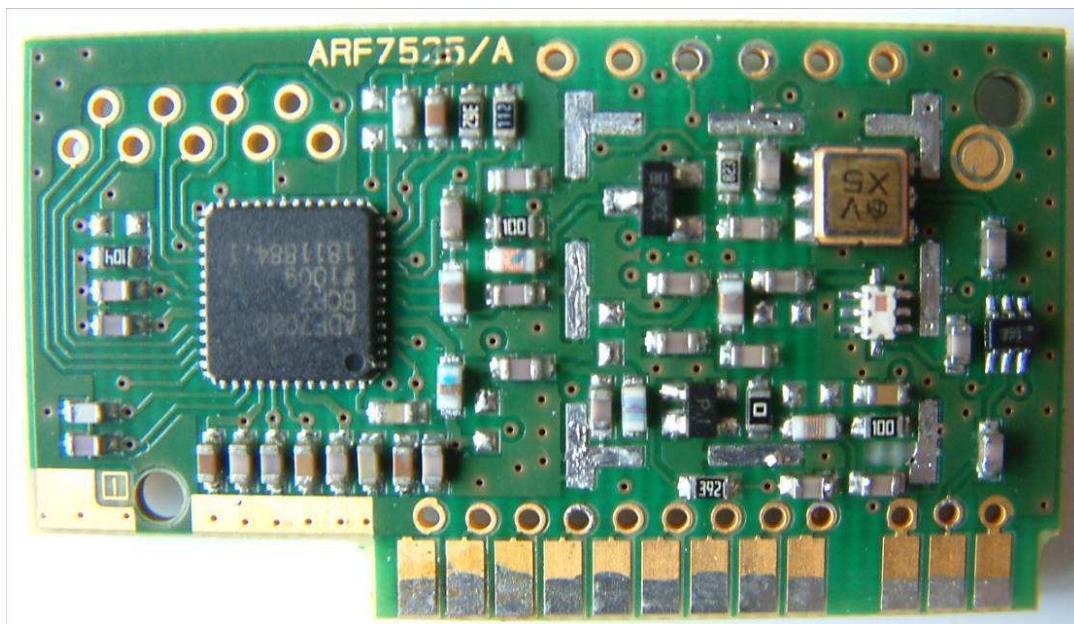


Detailed view of RF module



Detailed view of RF module





RF module without cover shield