

Quick Start Guide

ENGLISH

Box Package

Main Features

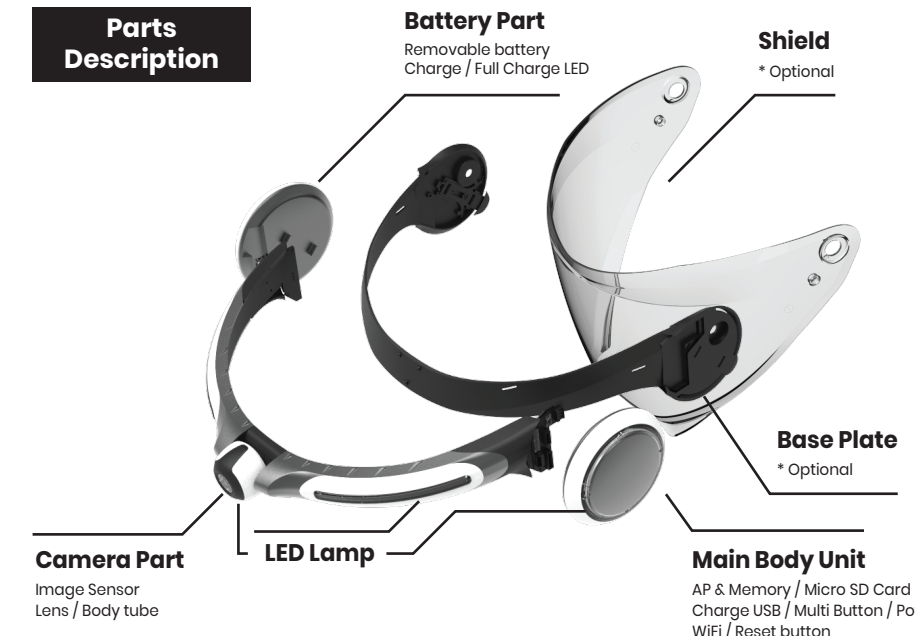
Main Features / How to install

Operation Guide – Multi button

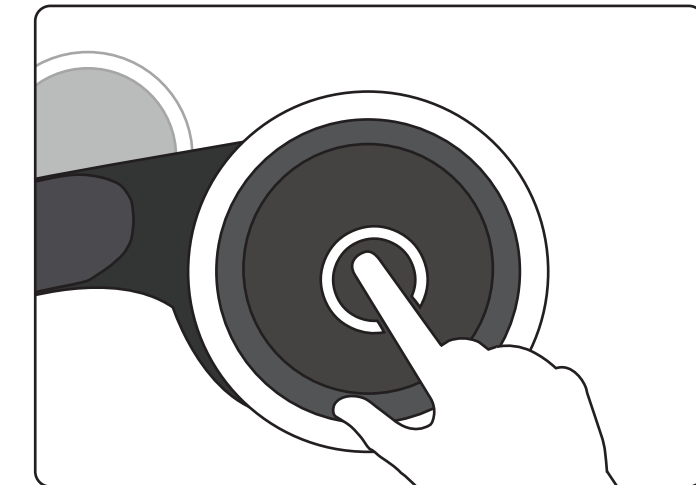
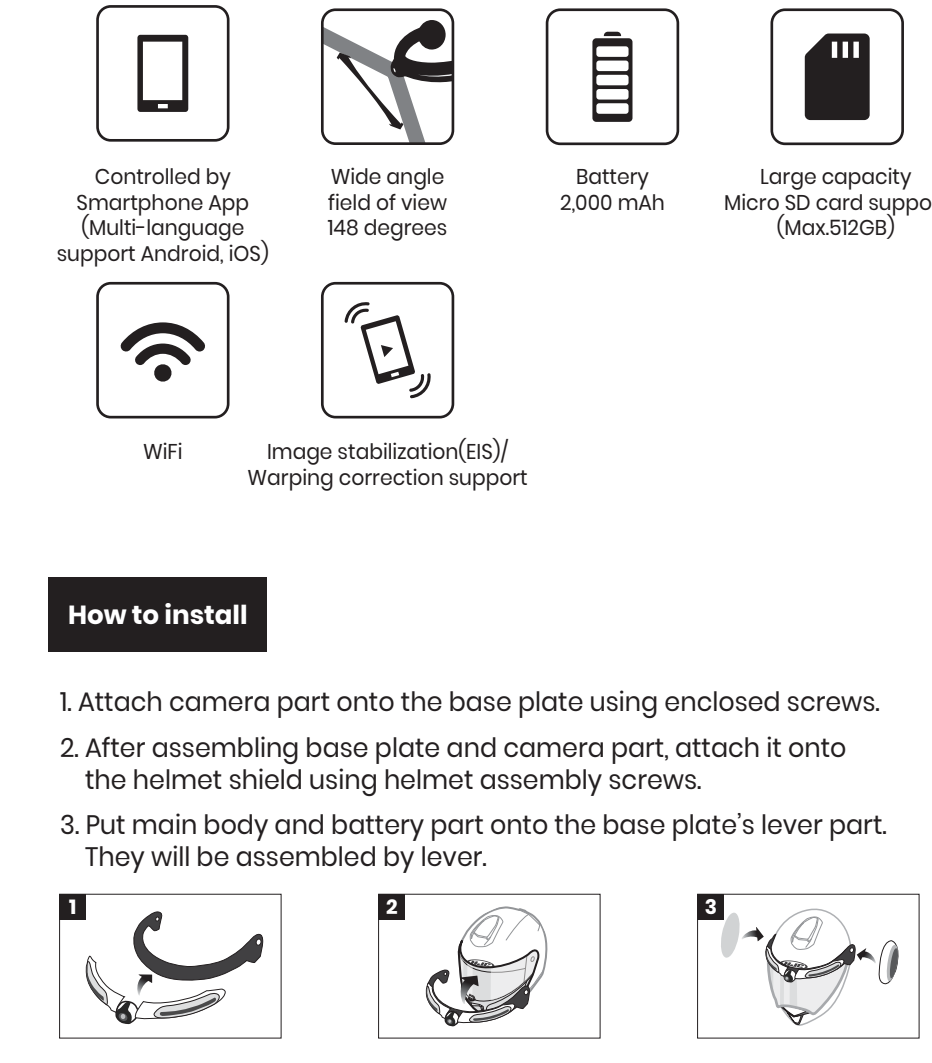
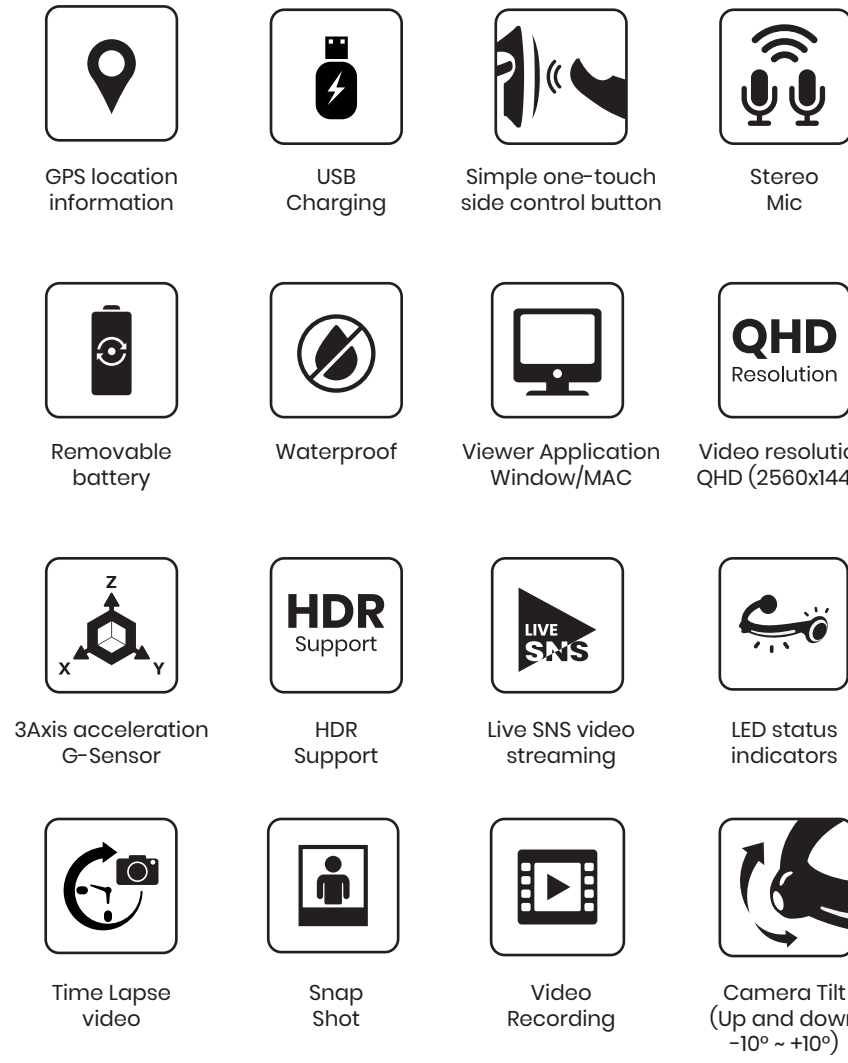
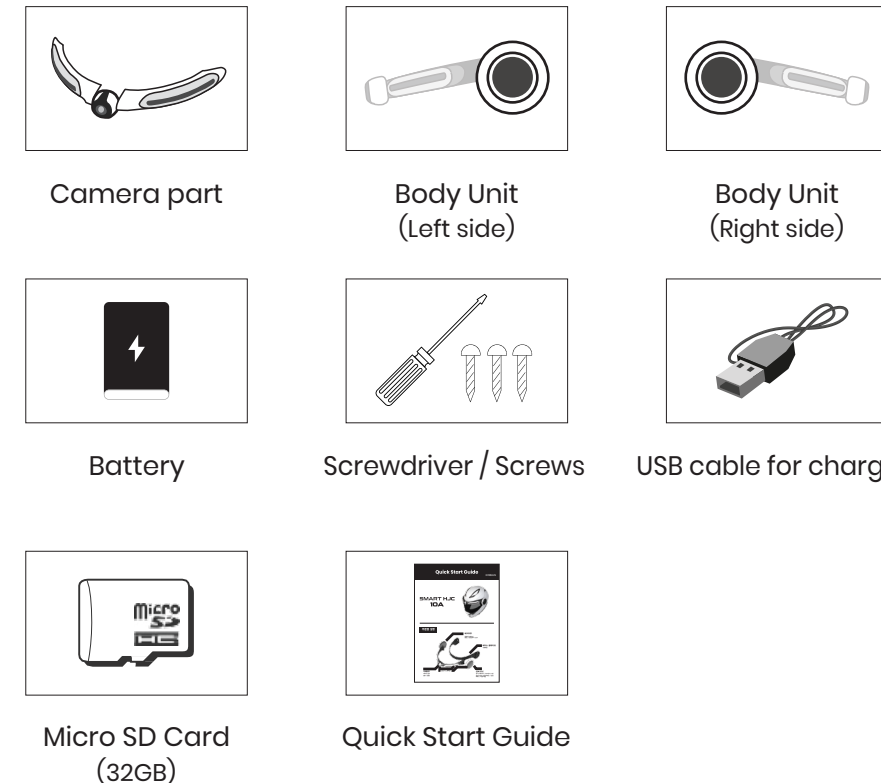
Operation Guide – LED Check

Operation Guide – Voice/Sound effect

WiFi Connection guide

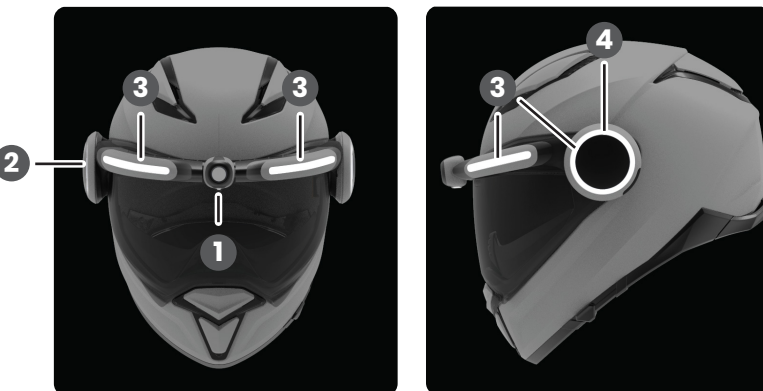


Components of this product are subject to change without notice to the user in order to improve the performance of the product. User must purchase shield and base plate as a optional.



Multi button

- 1. Single click : ▶ (when power off) Power on
▶ (when power on) Take picture
- 2. Double click : Record video ON/OFF
- 3. Long-press : ▶ 3~5 seconds : Power off
▶ Over 10 seconds : Initialize System Setting



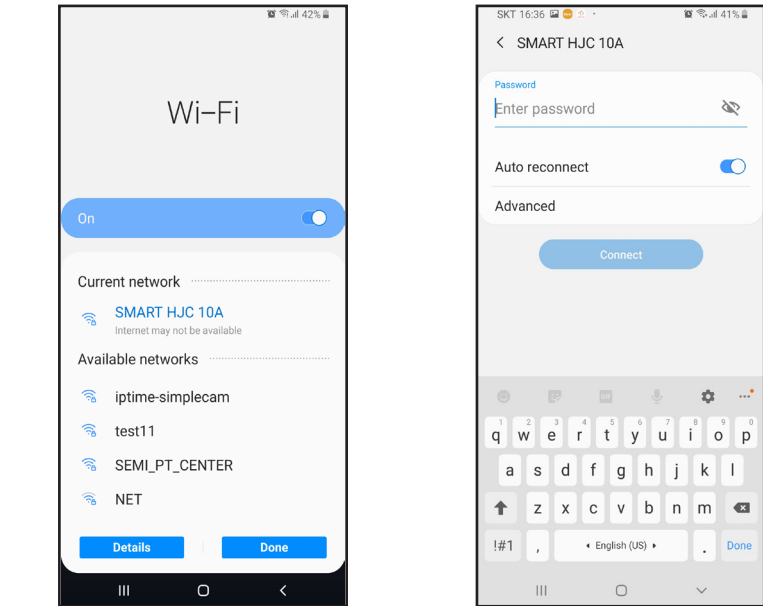
LED

- 1. Camera Red LED : ▶ OFF : Battery charge remaining over 15%
▶ ON : Battery charge remaining between 5% ~ 15%, White LED OFF to save power
▶ BLINK : Battery remained charge under 5%, WiFi OFF to save power
- 2. Battery Red LED : ▶ ON : Charging
▶ OFF : Fully charged
- 3. White LED : ▶ When power on : LED light on from both ends to center in order, then LED light off.
▶ When power off : LED light on from center to both ends in order, then LED light off.
▶ LED light can be always on by setting in App.
- 4. Blue LED : LED light always on when power is on.

Voice / Sound effect



- Voice and Sound effect on at the same time
- ▶ Start : "Sound effect + Hello"
- ▶ End : "Sound effect + Good-bye"
- ▶ Take picture : "Sound effect"
- ▶ Record video : "Sound effect+Start recording", Sound effect + Stop recording"
- ▶ System restart : "Restarting the System"
- ▶ Battery : "Battery is discharged. Please change the battery"
- ▶ SD CARD : "Please insert SD Card", "Starting SD Card format"
- ▶ "SD Card format completed", "Please check SD Card"
- ▶ "SD Card is full"
- ▶ "Need to format SD Card"
- ▶ System initialize : "System initialize started", "System initialize completed"
- ▶ "Starting Firmware Upgrade", "Firmware upgrade completed"
- ▶ "GPS connected"
- ▶ "Settings changed"
- ▶ "Shut down the system due to the device high temperature"



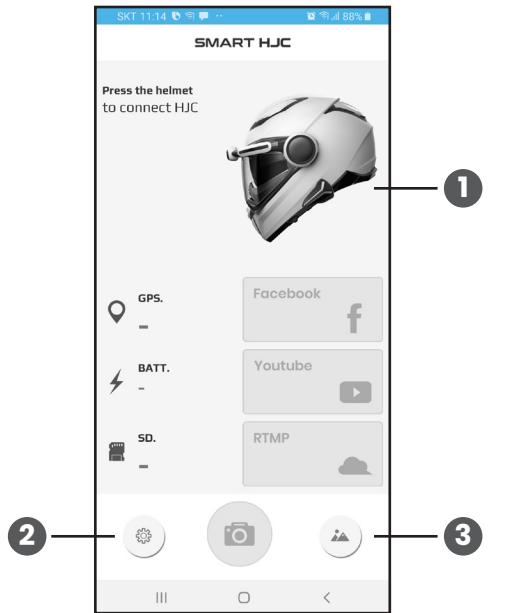
WiFi Connection

- On smart phone WiFi setting menu, select 10A helmet cam SSID and enter PW to connect 10A helmet cam and smart phone with WiFi.
- ▶ ID : SMART HJC 10A
- ▶ PW : 12345678

Specifications

Item	Specification	Refer
AP	A12A series	
Resolution	QHD@30fps	
Channel	1 Channel	
Image Sensor	SONY IMX335	
Recording Type	Video Recording	1min/2min/3min/5min
	Photography	
	"Through live streaming real time SNS video transferring"	
Video format	H.264	
Voice	Stereo Mic. & Speaker	
Voice guidance	English	
Battery	2,000mAh (Li-Ion Polymer)	
GPS	UBOX-8, built-in	
Dust proof, Water proof	Support	
Image stabilization	EIS	
Charge	Micro USB type	
Storage	Micro SD card	Max. 512GB support
Button	"Multi button function - Power ON/OFF - Record video ON/OFF - Photography"	Extra reset button
LED status	"Power status, Charge status, APP scenario status Always off (white LED all off) Always on (white LED all on) Emergency (white LED all blink)"	
Wireless connection	WiFi (Video, control)	
Gyro sensor	InvenSense MPU6500	
Smart phone APP	Android / iOS	
Viewer application	Windows / MAC	

Application – Main OFF

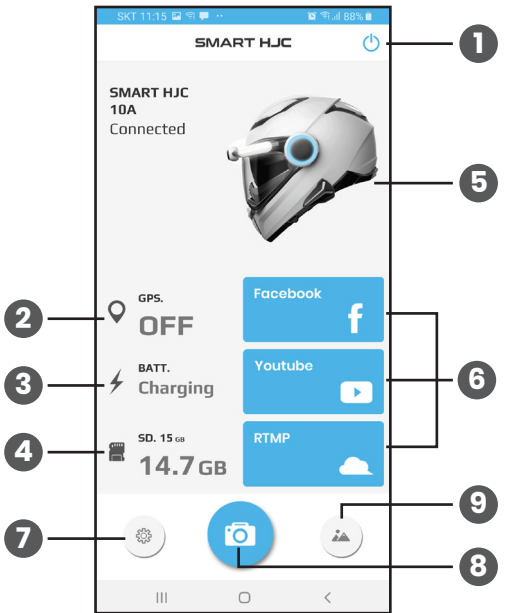


Main – OFF

Available menus when 10A Helmet cam is not connected WiFi.

1. WiFi connection ON : Upper ① image click
2. Setting : Please refer "Application-Setting" page.
3. Gallery : Saved downloaded file in a smart phone.

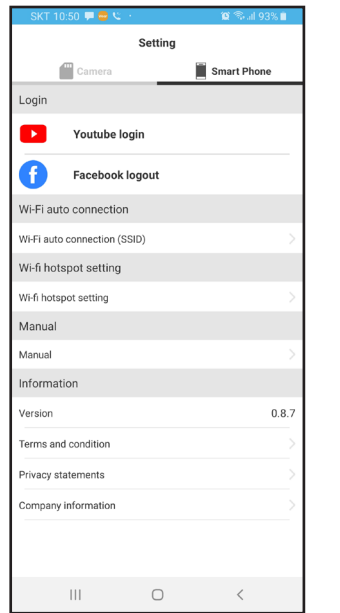
Application – Main ON



Main – ON

1. Power OFF
2. GPS connection status
3. Battery status : ► Charging / ► Battery remained charge
4. Micro SD card info. : ► System total data / ► Available space
5. WiFi connection OFF : Upper ⑤ image click
6. SNS Streaming : Facebook, Youtube, Personal server live video streaming
7. Camera setting
8. Live View
9. Gallery : Check downloaded video files in the smart phone and video files in the SD card.

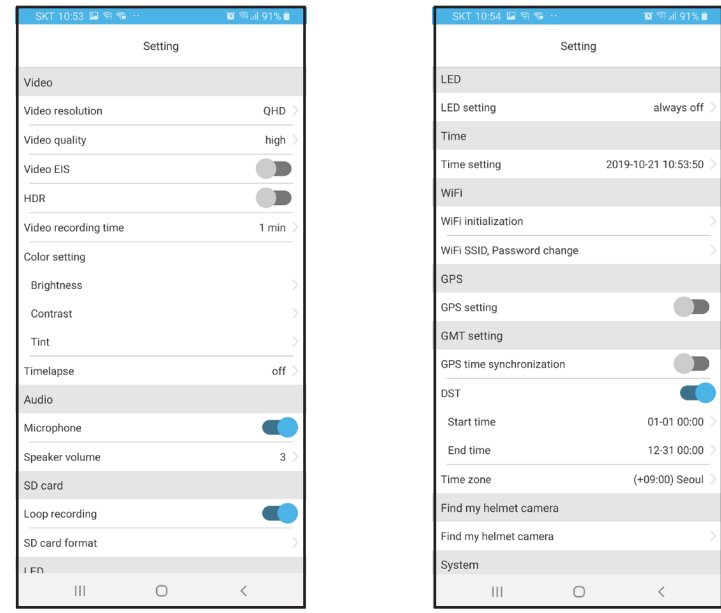
Application – Setting



Setting

1. Youtube or Facebook Login : Enter Login account
2. WiFi auto connection : When user running the App, app will be automatically connected with helmet cam if user register Wifi SSID and PW in advance.
(*) WiFi auto connection may not support depends on smart phone model.
3. WiFi Hotspot setting : Set up smart phone's hotspot ID and PW when SNS video streaming.
(*) Please refer full manual for the detail.

Application – Camera setting



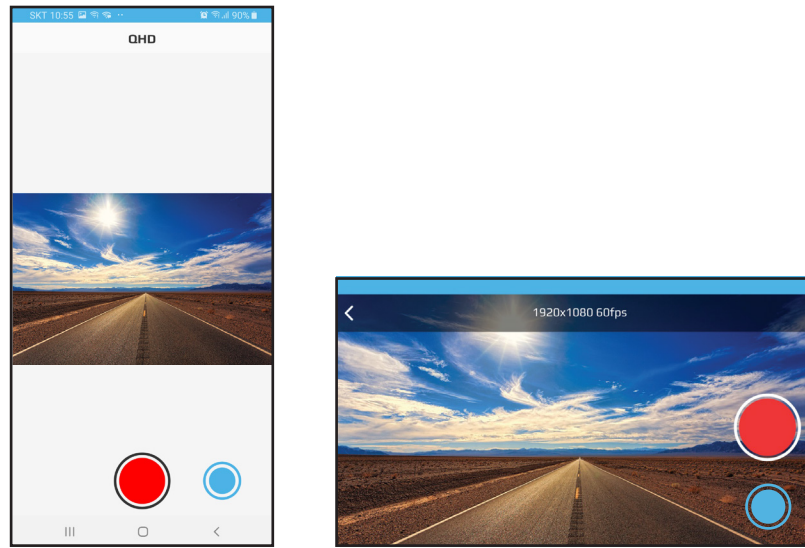
Camera Setting

Available setting page for detail function of the 10A helmet cam.

* White LED : Always off (white LED all off), Always on (white LED all on), Emergency (white LED all blink)

(*) Please refer full manual for the detail.

Application – Live view

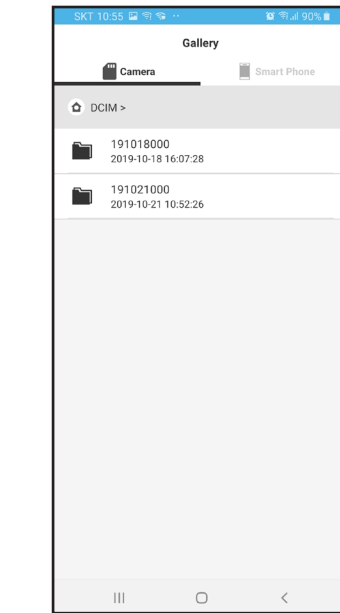


Live view

Available for Video recording ON/OFF and photography at live menu. Adjust the camera tilt for the view angle and check real time live view video. Then user can get videos and pictures that user wants.

(*) Detail information, download, delete functions supported.

Application – Gallery

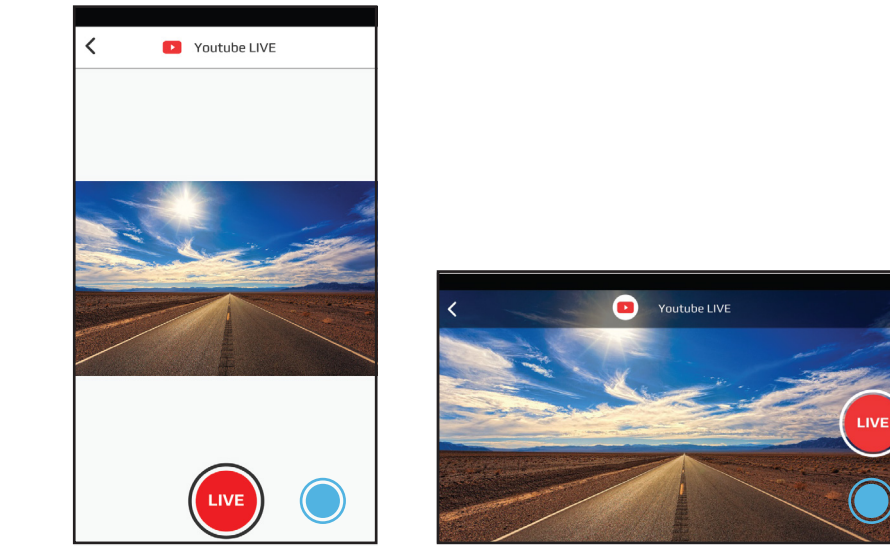


Gallery

1. Camera : User can check videos and photos in Micro SD card of the 10A helmet cam per date.
2. Smart phone : User can check smart phone's video and photo files downloaded from the SD card of the 10A helmet cam.

(*) Detail information, download, delete functions supported.

Application – SNS Streaming



SNS Streaming

10A helmet cam's SNS streaming screen menu, live streaming start and photography is available.

FCC Compliance information

This device complies with part 15 of the FCC rules. Operation is subject to the following two conditions: (1) This device may not cause harmful interference, and (2) this device must accept any interference received, including interference that may cause undesired operation.

This equipment has been tested and found to comply with the limits for a Class B digital device, pursuant to part 15 of the FCC Rules. These limits are designed to provide reasonable protection against harmful interference in a residential installation. This equipment generates, uses and can radiate radio frequency energy and, if not installed and used in accordance with the instructions, may cause harmful interference to radio communications. However, there is no guarantee that interference will not occur in a particular installation. If this equipment does cause harmful interference to radio or television reception, which can be determined by turning the equipment off and on, the user is encouraged to correct the interference by one of the following measures:

- Reorient or relocate the receiving antenna.
- Increase the separation between the equipment and receiver.
- Connect the equipment into an outlet on a circuit different from which the receiver is connected.
- Consult the dealer or an experienced radio/TV technician for help.

Any changes or modifications not expressly approved by the party responsible for compliance could void the user's authority to operate this equipment. This transmitter must not be co-located or operating in conjunction with any other antenna or transmitter.

Caution : Any changes or modifications in construction of this device which are not expressly approved by the party responsible for compliance could void the user's authority to operate the equipment.

This equipment complies with RF exposure requirements set forth for an uncontrolled environment.