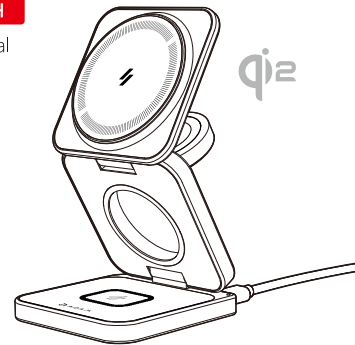


Mag 3 Pro

Qi2 3-in-1 Foldable Travel Charging Station

ENGLISH

User Manual

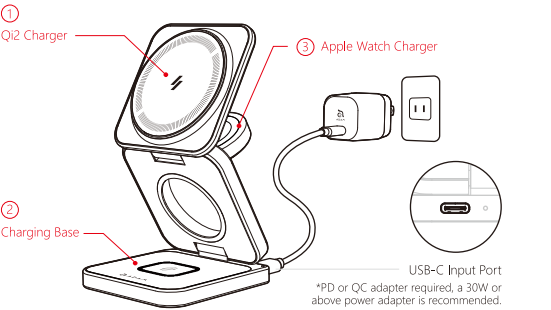


Specification

- Qi2 3-in-1 Foldable Travel Charging Station
- Model Name: Mag 3 Pro
- Input | USB-C female: 5V = 3A / 9V = 3A
- Output |
 - Qi2 Charger: 5V/5W, 7.5V/7.5W, 9V/10W, 9V/15W
 - Charging Base: 5V/5W
 - Apple Watch Charger: 5V/3W

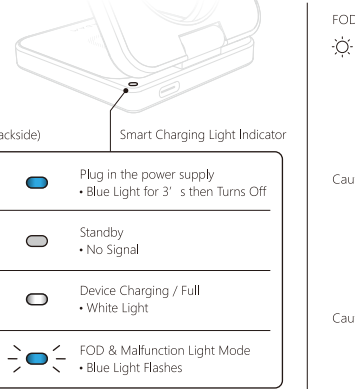
Size: 66 x 66 x 26 mm (folded)
Weight: 205 g
3-Year Limited Warranty
Made in China

Product Introduction

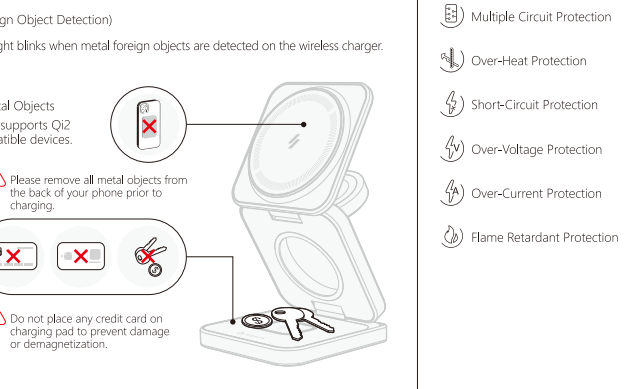


Caution: ⚠ To avoid any damage to wireless charger, please check the output voltage of the power source is suitable for the charger.

Light Mode



Protective Function



Attention

- Do not disassemble, puncture, drop, bend or modify
- Do not shake while charging
- Unplug the device when fully charged
- Do not expose to liquids
- Keep away from children
- Avoid extreme temperatures
- 3 years warranty
- For the fastest and safest charge, use an ADAM cable, your device' s original cable or a certified cable (such as MFi).
- The information in this user manual may be changed without prior notice, please scan the QR code for the latest version.

FCC Statement :

This device complies with Part 15 of the FCC Rules. Operation is subject to the following two conditions: (1) This device may not cause harmful interference, and (2) this device must accept any interference received, including interference that may cause undesired operation.

Warning: Changes or modifications not expressly approved by the party responsible for compliance could void the user's authority to operate the equipment.

Note: This equipment has been tested and found to comply with the limits for a Class B digital device, pursuant to Part 15 of the FCC Rules. These limits are designed to provide reasonable protection against harmful interference in a residential installation.

This equipment generates, uses, and can radiate radio frequency energy and, if not installed and used in accordance with the instructions, may cause harmful interference to radio communications. However, there is no guarantee that interference will not occur in a particular installation. If this equipment does cause harmful interference to radio or television reception, which can be determined by turning the equipment off and on, the user is encouraged to try to correct the interference by one or more of the following measures:

- (1) Reorient or relocate the receiving antenna.
- (2) Increase the separation between the equipment and receiver.
- (3) Connect the equipment into an outlet on a circuit different from that to which the receiver is connected.
- (4) Consult the dealer or an experienced radio / TV technician for help.

FCC Radiation Exposure Statement:

This equipment complies with FCC radiation exposure limits set forth for an uncontrolled environment. This equipment should be installed and operated with minimum distance 20cm between the radiator & your body.

FCC ID: 2ABY9MAG-3PRO

ADAM

ADAM elements International Co., Ltd.
www.adamelements.com
support@adamelements.com
+886-2-2738-9900



For more information, please visit ADAM store

