



User Manual

InfoEngine

Model Name: F-M01

Contents

1	Precautions	3
	Important Safety Information	3
	Note	4
2	Smart Pill Box	5
	Brief Introduction	5
	Items in the Package Box	5
	Overview	6
3	Get You Started	8
	Installing the App (iEZ PillBox)	8
	Operating Procedures	8
4	Using the Smart Pill Box	13
	Checking the Pill Box Status and the Next Medication Time at Any Time	13
	Reminding to Refill the Pill Box	13
	Typing Record Information	13
	Checking Historical Medication Records and Record Information at Any Time	13
	Anti-Loss Alert	14
	FindMe	14
5	Product Information	15
6	Fault Types and Related Solutions	16

1 PRECAUTIONS

IMPORTANT SAFETY INFORMATION

- Follow all instructions.
- Heed all warnings.
- Do not use the device near water.
- Only use dry cloth to clean the device.
- Do not block any vents. Install the device by following the manufacturer's instructions.
- Do not install near any heat sources, such as radiators, heat accumulators, stoves, and other heating devices (including power amplifiers).
- Only use accessories and spare parts specified by the manufacturer.
- Ensure that maintenance is performed by qualified maintenance personnel. Maintenance is required for the device in case of any damage caused by spilled liquid or falling objects onto the device, or the device being dropped or affected by rain or moisture.
- Battery warning: To avoid any body injury, property damage, or equipment damage caused by battery leakage, do not expose batteries (battery groups or installed batteries) to excessive heat conditions such as the blazing sun and fire.
- Note that there is a risk of explosion if batteries are incorrectly installed. Only same batteries or those with the equivalent model are allowed for replacement.
- Do not expose the device to water leaking or splashing environments.
- Do not place any potentially hazardous object (such as lit candles and objects with liquid) on the device.



Warning

- Do not remove the enclosure of the device.
- Do not lubricate any parts of the device.
- Do not place the device on any other electrical device.
- Keep the device away from direct sunlight and open fire, or avoid high temperatures.
- Never use this product in any way which is not in compliance with the prescription or directions of your prescribing medical practitioner, pharmacy or drug manufacturer.



NOTE

Bluetooth®

This equipment has been tested and found to comply with Bluetooth® 4.0.

Disposal of your old product and batteries

Your product is designed and manufactured with high quality materials and components, which can be recycled and reused.

Never dispose of your product with other household waste. Please inform yourself about the local rules on the separate collection of electrical and electronic products and batteries. The correct disposal of these products helps prevent potentially negative consequences on the environment and human health.

2 SMART PILL BOX

BRIEF INTRODUCTION

The device is composed of an electronic smart pill box and an app, which can be installed on Apple devices (such as iPhone 4S, iPhone 5/5S, and above) with Bluetooth 4.0 and Android smart phones (such as Galaxy S3, HTC One X, and Mi2, or above). The pill box can be connected to a mobile phone via Bluetooth.

With quite simple operations, the iEZ smart pill box can help you:

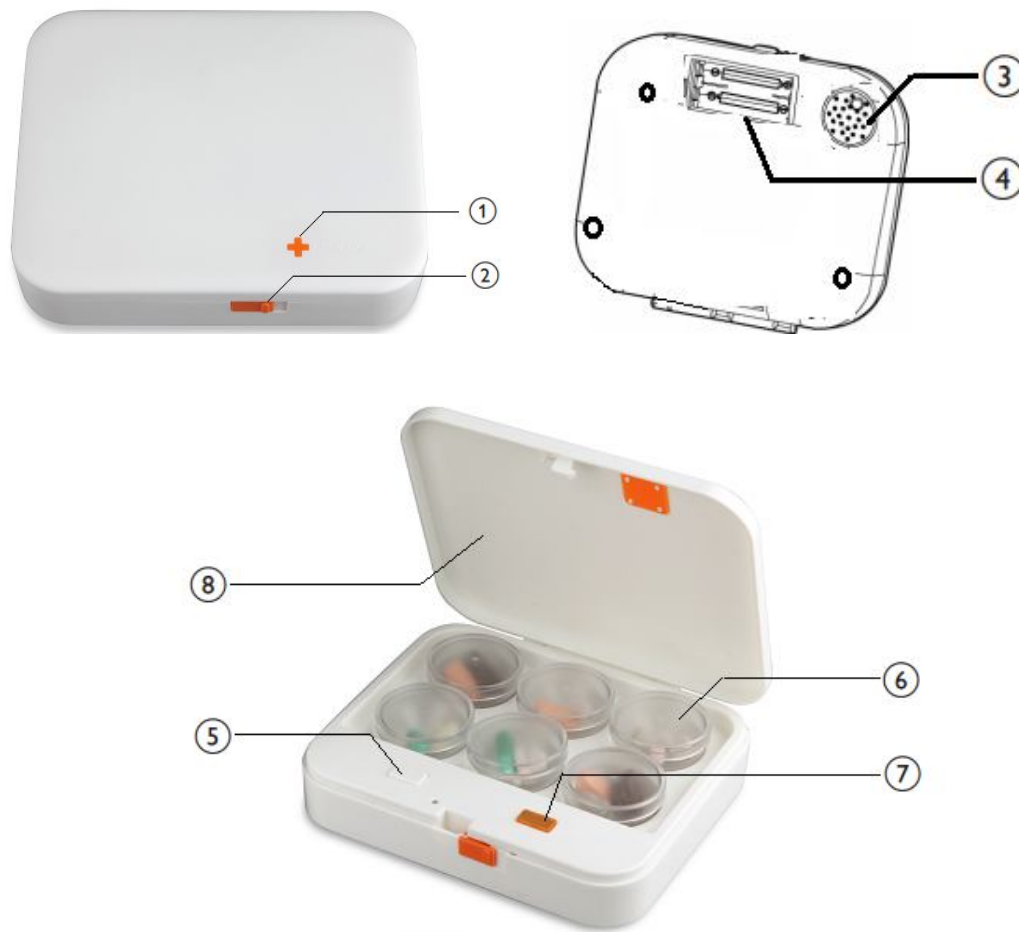
- Remind you to take medicines on time.
- Remind you to refill the pill box when medicines left in the box are insufficient.
- If you forget to take the pill box or mobile phone when you go out, the pill box or mobile phone will make an alert tone.
- The pill box automatically takes your medication record, allowing you to check using the app installed on the mobile phone whenever you want.
- During the medication process, you can also record your medication and physical conditions into the app at any time, which facilitates your further treatment in the future.

ITEMS IN THE PACKAGE BOX

Check and identify the following items that come with the iEZ smart pill box:

- Smart pill box
- Portable bag
- Printed materials

OVERVIEW



① and ⑦ Status indicator

- If the indicator blinks blue, Bluetooth is broadcasting.
- If the indicator is steady blue for 5 seconds, the Bluetooth connection is successful.
- If the indicator blinks red, the batteries are low.

② Buckle ⑧ Cover

- You can slide the buckle to the right to open the cover upward.
- The buckle automatically locks when the cover is closed.

③ Buzzer

- Makes an alert tone for scheduled prompt, anti-loss, and other functions.

④ Battery compartment

- Place two AAA- batteries to power up the smart pill box.

⑤ Function key

- When Bluetooth automatically turns off, briefly press to activate Bluetooth broadcasting again.
- Hold for more than 5 seconds to clear the pairing information and enable Bluetooth broadcasting.
- Stop the alert tone and vibration for the scheduled prompt and anti-loss functions.
- FindMe.

⑥ Medicine compartment

- Stores medications to be taken.
- A blue indicator is available beneath each medicine compartment to assist medication and refilling.

3 GET YOU STARTED

Be sure to follow the instructions in this chapter and perform operations in sequence.

INSTALLING THE APP (IEZ PILLBOX)

- To install and use the iEZ PillBox app for the first time, prepare one of the following smart phones: iPhone 4S, iPhone 5, iPhone 5C, iPhone 5S, Galaxy S3, HTC One X, MI2 or above. Go to Apple App Store or Android Google play to download and install the app (iEZ PillBox). When you finish installing the app, the following icon appears on the phone desktop:



OPERATING PROCEDURES

1. Installing Batteries

- The device uses two AAA batteries for power supply. For first-time use or in case of low batteries, remove the screws from the battery cover at the bottom of the pill box and install two new AAA batteries. The indicator blinks orange through the "+" mark on the cover surface. This indicates that the pill box is properly powered up and works well. Fix the screws back on the battery compartment.



Alert

- If the batteries are low, the indicator for the smart pill box blinks red.

2. Connecting to Bluetooth

- If the indicator blinks blue after you open the cover, it indicates that Bluetooth has turned on automatically.

- Click the iEZ PillBox app on the mobile phone. A screen as shown in Figure 1 appears. Click **Connect** to connect the app to the pill box via Bluetooth.

Alert

- If the device does not connect to Bluetooth within 120 seconds after Bluetooth turns on automatically, the pill box turns off Bluetooth. Briefly press the function key to enable Bluetooth again.
- If the screen shown in Figure 2 appears during the connection process, click **Pair** to confirm the connection. The indicator on the pill box is steady blue after the connection is successful, and the page indicating the pill box status displays, as shown in Figure 3.



Figure 1



Figure 2



Figure 3

Note

- To pair with a new Bluetooth device, perform the following operations:
- 1. Hold the function key of the pill box for more than 5 seconds to remove the existing Bluetooth connection.
- 2. Disable Bluetooth of the currently connected device.
- The iEZ smart pill box memorizes no more than one pairing device.

3. Setting Medication Reminders

- Click **Reminders** on the menu on the lower part of the app. The screen shown in Figure 4 appears. Click **+** (add reminders) shown in Figure 4. Then, the screen shown in Figure 5

appears. Select the medication time, the name and quantity of the medicine to be taken as prompted.

- Click **Med** to navigate to the medicine selection page (as shown in Figure 6). If the app database does not have required medicine, click **+** at the upper right corner to add it.
- The preceding process applies to one type of medicines. To add multiple types of medicines, follow the preceding instructions to add all medicines to be taken.



Figure 4

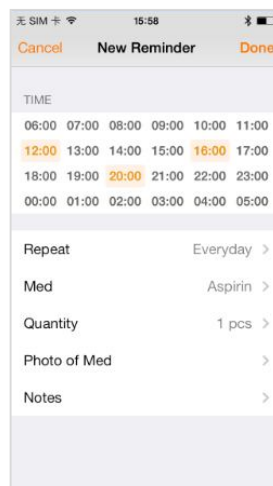


Figure 5

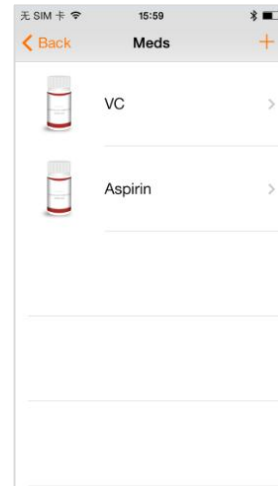


Figure 6

4. Refilling the Pill Box with Medicines As Reminded Based on the App Instructions

- After setting all reminders, click **Sync** at the upper left corner of the **Reminders** page. The screen shown in Figure 7 appears. Click **Yes** and perform the refilling process step by step based on the app instructions.
- During the refilling process, the boundaries in the diagram for the medicine compartment to be refilled blink orange and the indicator on the lower part of the corresponding medicine compartment blinks blue, reminding you to add pills to the correct medicine compartment. The name and quantity of required medicines are displayed on the app. Figure 8 shows that the first medicine compartment needs to be refilled.
- After refilling the first medicine compartment, click **Next** to refill the next medicine compartment until all medicines are added to the pill box. To check medicines required for each medicine compartment, click the corresponding medicine compartment shown in the medicine compartment diagram.

- After you finish refilling the pill box, click **Done** at the upper right corner. Both the app and the pill box check and verify that all medicine compartments are refilled with medicines, avoiding refilling errors or omissions.

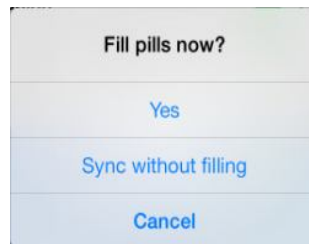


Figure 7



Figure 8

5. Taking the Medicine as Scheduled

- When the scheduled time is due, both the app and the pill box remind you to take the medicine with an alert tone or vibration. A reminder message also displays on the app screen.
- If you open the pill box within half an hour before or after the time the pill box reminds you, the indicator for the corresponding medicine compartment blinks blue to remind you to take the medicine from this medicine compartment.

4 USING THE SMART PILL BOX

CHECKING THE PILL BOX STATUS AND THE NEXT MEDICATION


TIME AT ANY TIME

- When you start the app, the main pill box page displays the current status of the pill box and the next medication time.

REMINDING TO REFILL THE PILL BOX

- If the remaining medicines in the pill box will be used up at one time, the app and the pill box will remind users to refill the pill box using sound, vibration and blinking indicators.
- If any of the five medicine compartments is empty, the indicator for the medicine compartment blinks blue.

TYPING RECORD INFORMATION

- On the main page of the pill box app, click  to add record information.
- You can enter any information at your will. Such information includes medication and your feelings about your recent medication.

CHECKING HISTORICAL MEDICATION RECORDS AND RECORD

INFORMATION AT ANY TIME

- The smart pill box automatically takes your medication records and saves them in the app.
- To view all medication records, click **Logs** on the lower menu on the main page of the app. The records include experience of taking the medicine as scheduled and failing to take the medicine as scheduled (as shown in Figure 9), helping patients and doctors learn of medication conditions.
- Click **More** to select more options, such as viewing details on a weekly or monthly basis or during any period.

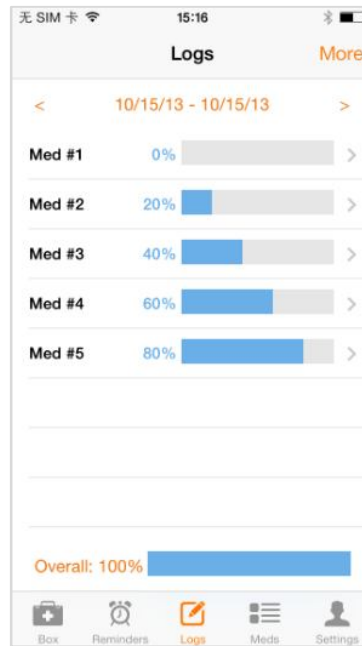



Figure 9

ANTI-LOSS ALERT

- The anti-loss function is by default enabled. You can enable/disable this function with **Never Lost** option in the **Settings** menu of the app.
- After the app is connected to the pill box device via Bluetooth, both the mobile phone and the pill box will make an alert tone when the distance between them is longer than 10 meters. This helps effectively prevent you from forgetting to take the pill box and avoids loss of the mobile phone or the pill box.

FINDME

- When the app is connected to the smart pill box via Bluetooth, the smart pill box keeps making an alert tone after you click  on the main page in the pill box app. You can find the smart pill box by listening to the alert tone.

5 PRODUCT INFORMATION

Buzzer

Resonant Frequency	4 kHz
Sound Pressure level(dB) at 10cm	80dB

Vibrating Motor

Rated RPM	12500
-----------	-------



Bluetooth® Version	4.0
Frequency Band	2.402-2.480 GHz frequency band
Range	10 meters (free space)

General Information

DC	2.2 to 3.2V input
Battery	Two AAA batteries
Size	
- Main device	147 x 126 x 30 mm (Length x Width x Height)
Weight	
- Including Package	Xx kg
- Main Equipment	0.235 kg



Note

- Specifications are subject to change without notice.

6 FAULT TYPES AND RELATED SOLUTIONS



Warning

- Do not remove the enclosure of the device.

To ensure warranty validity, do not try to repair the device by yourself. If any problem occurs during your use of the device, check the following items before applying for service. If the problem persists, visit the InfoEngine Web page at www.infoenginetechnology.com/support. Before contacting InfoEngine, take the device beside you and jot down its model and serial numbers.

Failing to Power on the Pill Box or Turn on the Indicator

- Check whether the batteries are low, or replace the batteries with new ones (Please refer to "Installing Batteries" on page 6.).
- After installing the batteries, check whether the indicator blinks.

Buzzer Making No Sound

- Ensure that the **Buzz** option is enabled in the **Settings** menu of the app when the app and the smart pill box are connected via Bluetooth.

No Vibration

- Ensure that the **Vibration** option is enabled in the **Settings** menu of the app when the app and the smart pill box are connected via Bluetooth.

Failing to Set up Bluetooth Connection

- Check whether the batteries are low or replace the batteries with new ones (Please refer to "Installing Batteries" on page 6.)
- After installing the batteries, check whether the indicator blinks.
- Check whether Bluetooth for the pill box is enabled (Please refer to "Connecting to Bluetooth" on page 6) and whether the indicator blinks blue.
- Ensure that your mobile phone supports Bluetooth 4.0 and check whether Bluetooth for your mobile phone is enabled.
- Ensure that the iEZ smart pill box and the mobile phone are within the effective operating distance that is approximately 10 meters (20 feet).

- Remove any obstacle between the iEZ smart pill box and the mobile phone.
- Hold the function key of the pill box for more than 5 seconds for setting and check whether the indicator blinks blue.
- Check whether the app functions well. If it does not, reinstall the app.
- Read carefully the description about connecting to Bluetooth on page 6 and reconnect to Bluetooth by following the instructions.

Important Regulatory Information

This device complies with part 15 of the FCC rules. Operation is subject to the following two conditions:

- (1) this device may not cause harmful interference, and
- (2) this device must accept any interference received, including interference that may cause undesired operation.

Changes or modifications to this unit not expressly approved by the party responsible for compliance could void the user's authority to operate the equipment.