

WIRELESS CHARGING TRANSMITTER

USER MANUAL

Model: M200

FCC ID: 2ABW7-M200

Manufacturer: Shenzhen Weiming Technology Co., Ltd

Address: 2502, Block B, Southern International Plaza,

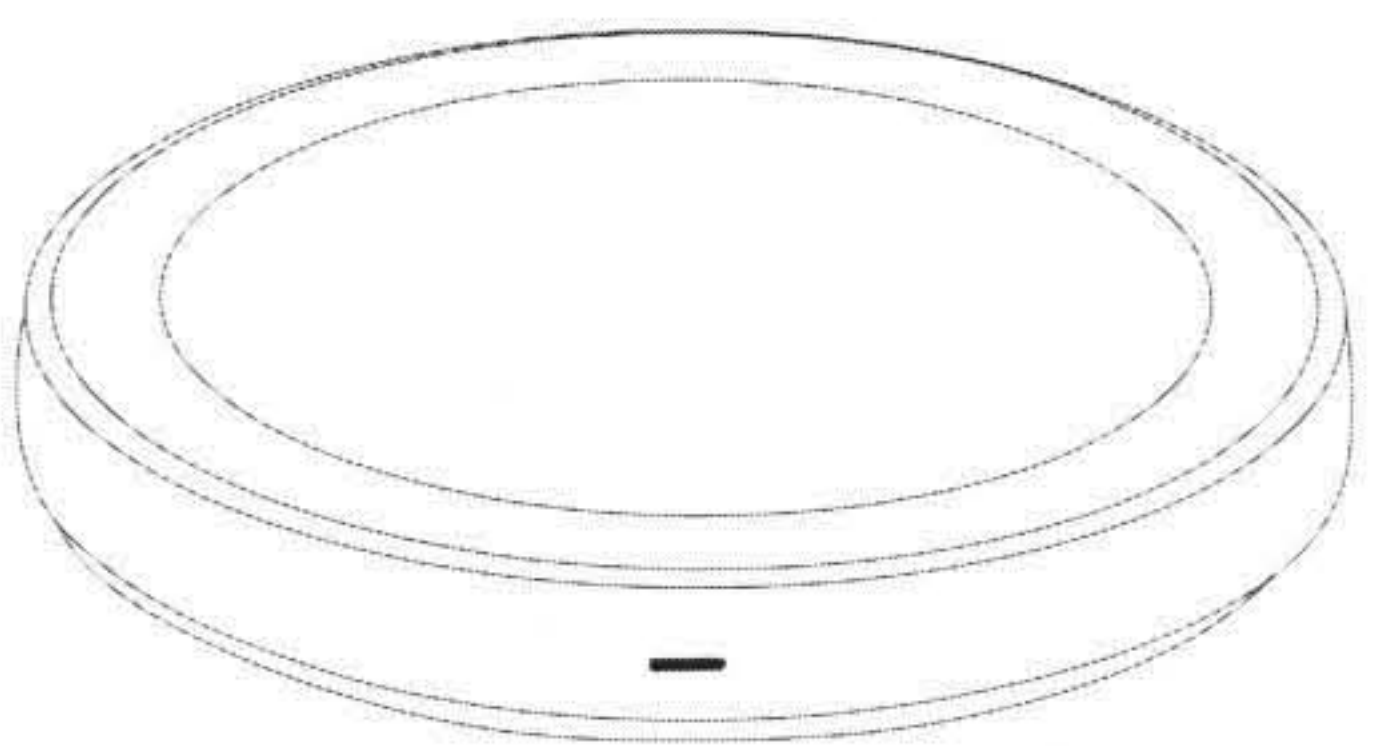
3013 Yitian Road, Futian District, Shenzhen 518048, China

User Manual

Thanks for choosing us!

This is a smart phone wireless charger that allows you enjoy the fun of digital products easily.

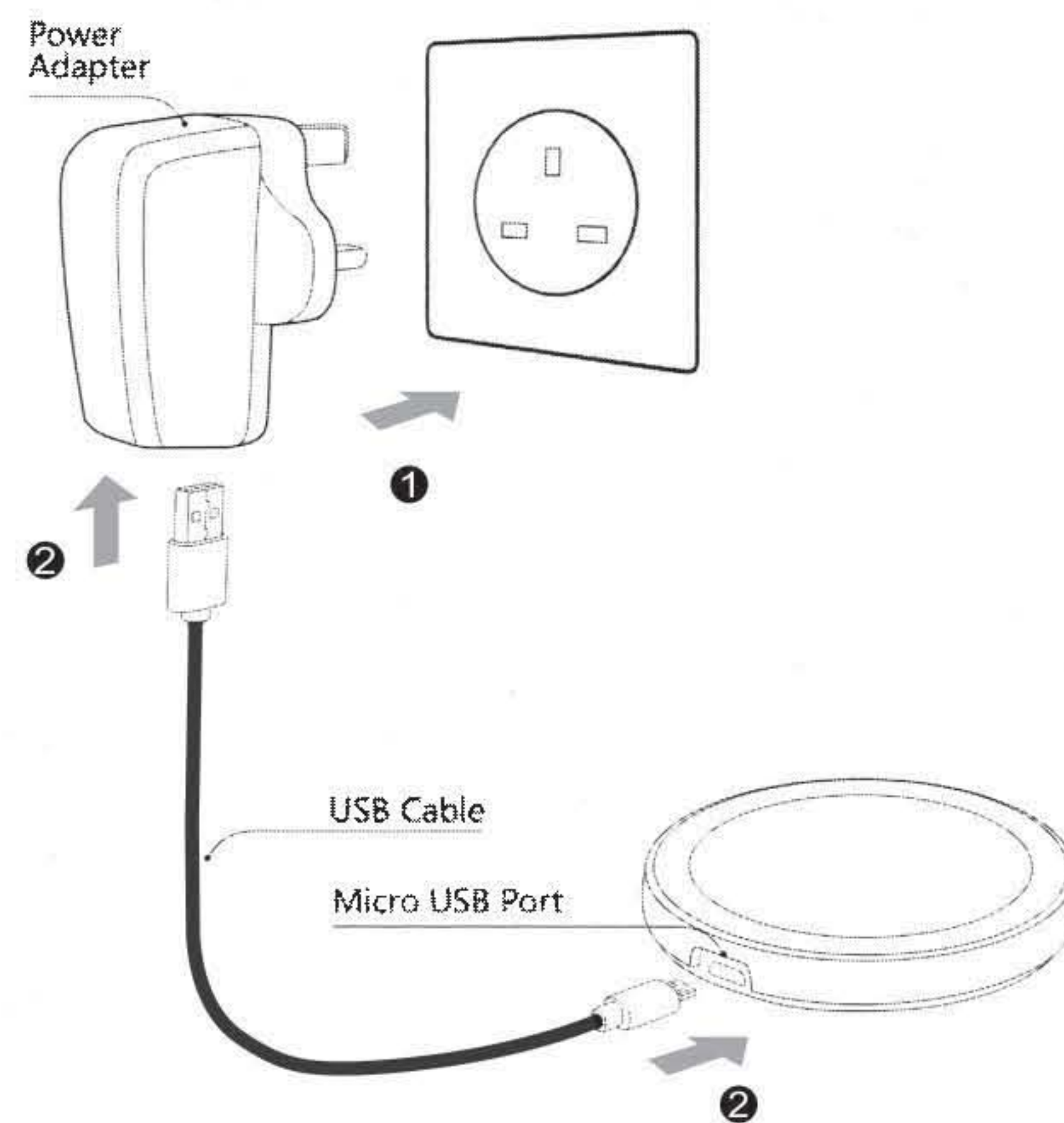
Please kindly read the user manual before using and keep it for future reference.



Specification:

Input : DC5V,2000mA	Charging distance : 4~10mm
Frequency : 110~205KHz	Conversion : ≥72%
Diameter: 69mm	Thickness: 9mm
NW.: 50g	

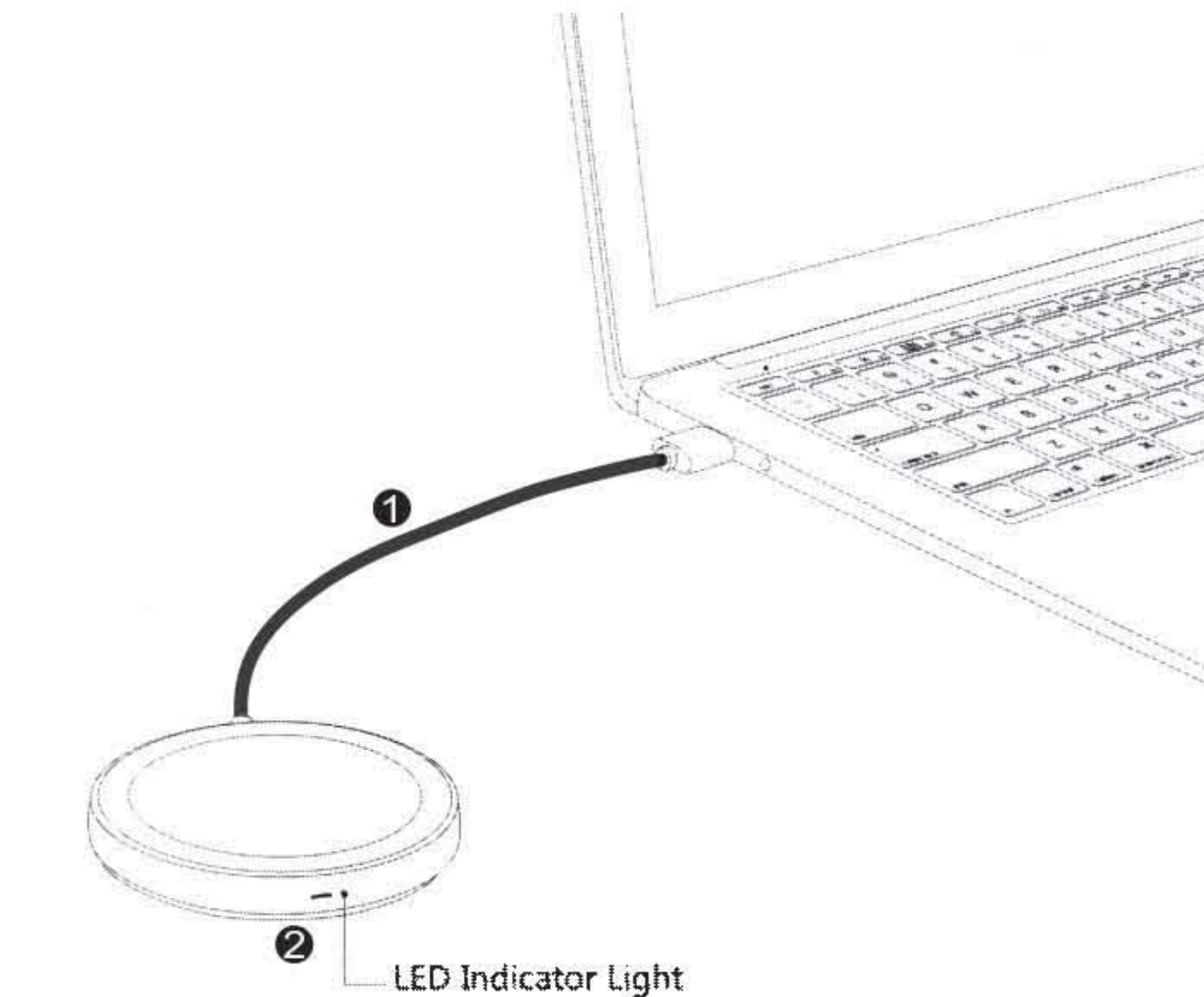
Connect to Power Adapter



- ① Connect the power adapter to socket.
- ② Connect adapter to the USB 2.0 interface, the other Micro USB to pad.
- ③ Standby LED light turn on red

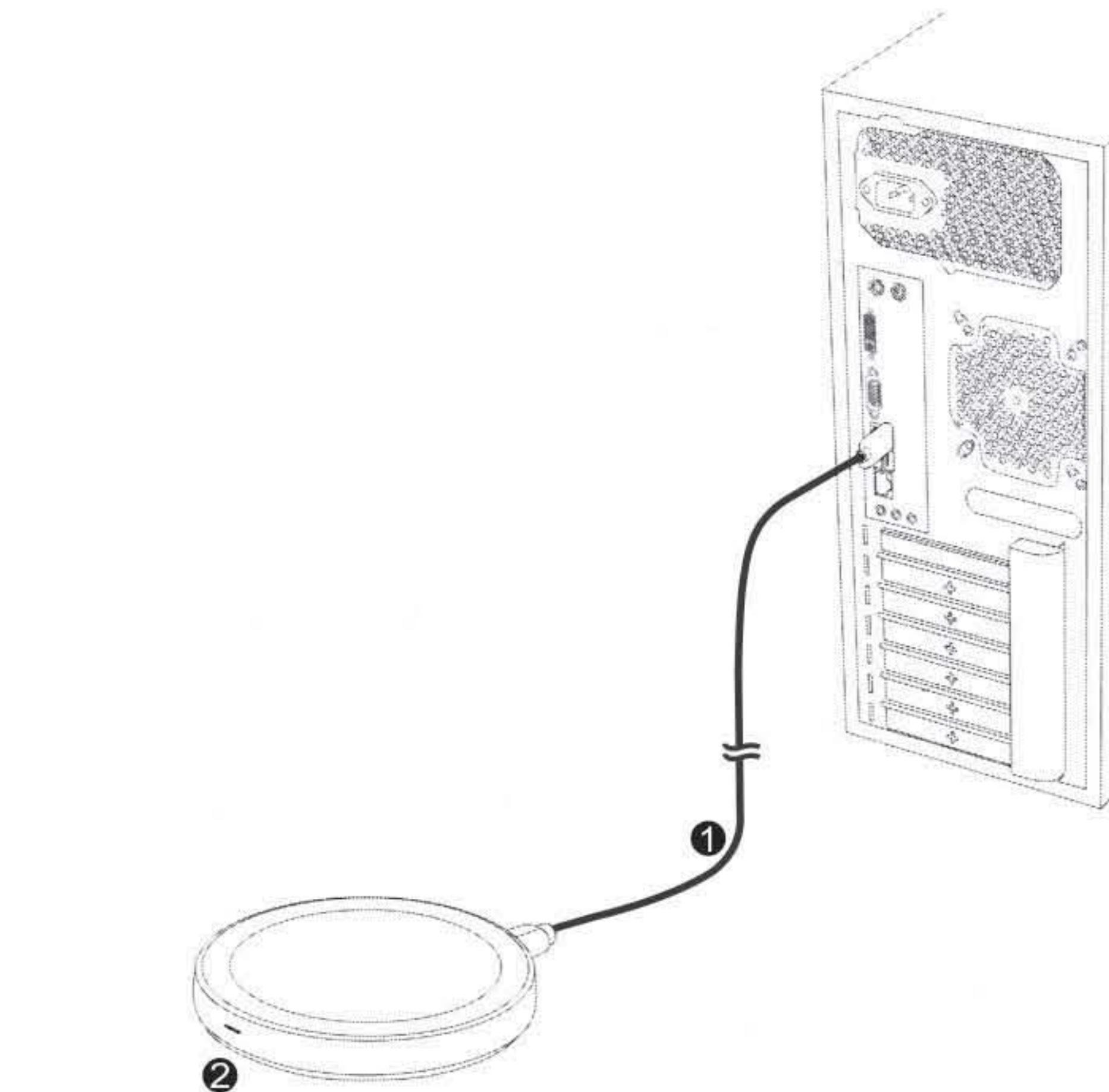
Note: Charging pad controlled by smart chips, long-term standby can be assured.

Connect to Laptop for Charging



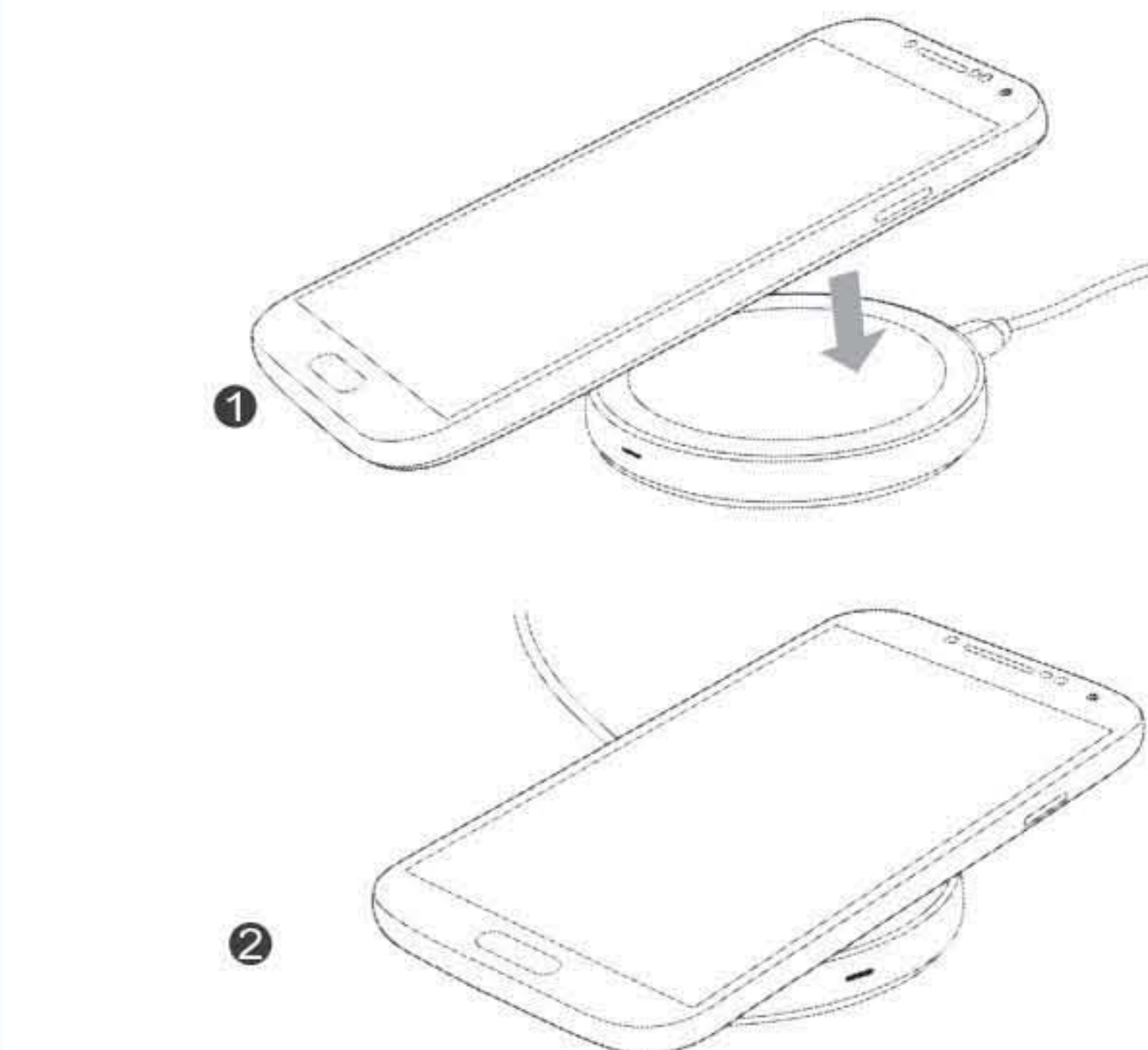
- ① Connect the USB 2.0 interface into laptop USB port, the other Micro USB to pad.
- ② Standby LED light turn on red

Connect to Desktop for Charging



- ① Connect the USB 2.0 interface into desktop motherboard USB port, the other Micro USB to pad.
- ② Standby LED light turn on red

Charging mode



- ① Make sure the charging pad indicator light turn on green, under standby status.
- ② Put wireless charging mobile phone on the pad, it will start charging after a sound "dii".The charging pad will sound continuous tone with blue and green LED light flashing when placed on the incorrect position. Please move your phone a little until the tune stop and LED light turn to blue. It shows that the phone is already found the right charging position and start charging.

Notes:

- 1、Do not squeeze or collisions.
- 2、Do not disassemble or throw into fire or water, to avoid causing a short circuit leakage.
- 3、Do not use wireless charger in severely hot, humid or corrosive environments, to avoid circuit damage and occurs leakage phenomenon.
- 4、Do not place too close with magnetic stripe or chip card (ID card, bank cards, etc.) to avoid magnetic failure.
- 5、Please keep the distance at least 20cm between implantable medical devices (pacemakers, implantable cochlear, etc.) and the wireless charger, to avoid potential interference with the medical device.
- 6、To take care of the children, to ensure that they won't play the wireless charger as a toy, to avoid unnecessary accidents.

The involved images are sketch maps,the final product as per the material subjects.

Includes: M200 wireless charger, 30cm power cable, 150cm power cable, user's manual, warranty card.
* No power adapter, if you need, please purchase separately.

This equipment has been tested and found to comply with the limits for a Class B digital device, pursuant to part 15 of the FCC Rules. These limits are designed to provide reasonable protection against harmful interference in a residential installation. This equipment generates, uses and can radiate radio frequency energy and, if not installed and used in accordance with the instructions, may cause harmful interference to radio communications. However, there is no guarantee that interference will not occur in a particular installation. If this equipment does cause harmful interference to radio or television reception, which can be determined by turning the equipment off and on, the user is encouraged to try to correct the interference by one or more of the following measures:

- Reorient or relocate the receiving antenna.
- Increase the separation between the equipment and receiver.
- Connect the equipment into an outlet on a circuit different from that to which the receiver is connected.
- Consult the dealer or an experienced radio/TV technician for help.

Caution: Any changes or modifications to this device not explicitly approved by manufacturer could void your authority to operate this equipment.

This device complies with part 15 of the FCC Rules. Operation is subject to the following two conditions: (1) This device may not cause harmful interference, and (2) this device must accept any interference received, including interference that may cause undesired operation.