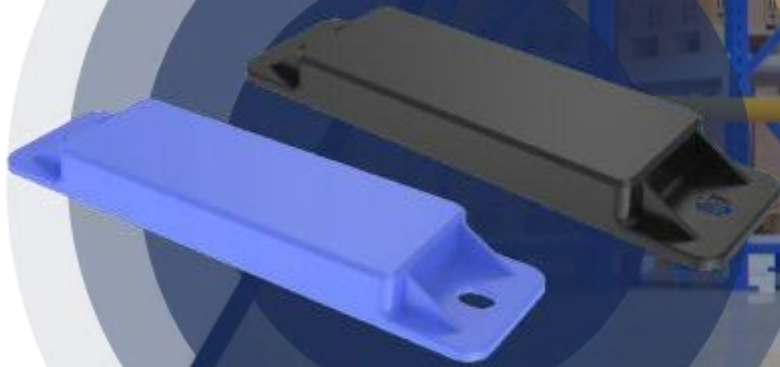


MTB07

BLUETOOTH®

PALLET TRACKER

Datasheet



PRODUCT OVERVIEW

MTB07 is the latest generation of Pallet Tracker developed by Minew, which is mainly used for tracking and managing the location and usage status of assets such as pallets, trailers, containers, and other assets in logistics, supply chain, warehousing and other scenarios. Adopting the advanced Bluetooth chip to ensure low-power consumption broadcasting. Moreover, equipped with a larger capacity battery, the endurance is up to 5 years or more, saving end-application maintenance time and cost after deployment. In addition, due to the use of hard and sturdy materials and a high sealing manufacturing process, the tracker can reach IP67 and IK08 waterproof and shockproof ratings, respectively, which can be applied in some of the more demanding and complex scenarios.

[View Now](#)

KEY FEATURES



5 Years
Service Life



IP67 Waterproof
& Dustproof



IK08
Shockproof



120 m Broadcast
Range



Superior RF
Performance



Multi-color
Design

APPLICATION SCENARIOS



Pallets Tracking



Trailers Tracking



Containers Tracking



Logistic Basket Tracking

* **Note:** the scenarios mentioned above is only for references.

PRODUCT SPECIFICATIONS

BASIC SPECIFICATIONS






Material	ABS+PC	/
Color	Blue/Black	Customizable
Size	116.5*30.5*11mm	/
Weight	34.1g	/
Configuration app	BeaconSET +	/
Deployment options	3M/screws/zip ties	/

TECHNICAL SPECIFICATIONS

Chip	nRF52 series	/
Battery capacity	CR2450 packs, 1200 mAh	CR2032 packs optional
Services life	5 years (default setting)	Configurable
Protection	IP67/IK08	/
Sensor	Magnetron	Accelerometer optional
LED	Blue	/
Bluetooth protocol supported	Bluetooth® LE 5.0	/
Broadcast interval	Default 2000ms	Configurable, 100 ms ~ 5000 ms
Broadcast range	120 m (open area)	/
OTA	Not supported	/
Configuration App	BeaconSET +	/
Working temperature range	-20 °C ~ 60°C	/
Working humidity range	0 - 95 %RH, non-condensing	/
Security	Supports changing passwords, anti-malicious connection	/

SUPPORTED SYSTEMS	SUPPORTED MODELS
iOS 10.0 and above	iPhone6 /6 Plus /6S/ 6S Plus /7 /7 Plus /8 /8 Plus / x /xr /xs /xs max /SE /SE2 / 11 /11 pro /11 pro max
Android 4.3 and above	Samsung,Xiaomi,Google Pixel,Honor, OnePlus, Huawei, etc.

DEVICE OPERATIONS

-  **Power-on:**
 press the button in the middle of the device for 3.6 seconds until the blue light on.
-  **Power-off:**
 the standard one can only be turned off by BeaconSET + App. The blue light will flash 5 times when the device is off.
-  **Parameters configurable:**
 - ①Turn on BeaconSET + App.
 - ②Choosing the device according to the MAC address.
 - ③Enter the password of“minew123”, and the page to configure the parameters as wished.
-  **App connection:**
 the device's blue light will flash two times when connecting normally.
-  **App disconnection:**
 the device's blue light will flash three times when disconnecting.

PRECAUTIONS

- It is recommended to set lower transmitting power and longer broadcast intervals to achieve a longer service life.
- It is not recommended to install the device on a surface which facing a high shock directly even though it has passed a certain shockproof level.
- Avoid being exposed to direct sunlight for an extended period to mitigate shell aging risk.
- Do not use the product over the recommended working temperature to avoid damage. It is recommended that to store the product in a normal temperature environment (20°C ~ 30°C) when not use.
- Minew will not be responsible for any damage or injury caused by disassembling the main casing without appropriate operations.
- If you have any other questions, please contact our sales team or technical support team.


CERTIFICATIONS

C E FCC RoHS

* **Note:** The certification code can be provided if needed, please contact our sales team or technical support team for relevant information.

This device complies with part 15 of the FCC Rules. Operation is subject to the following two conditions: (1) This device may not cause harmful interference, and (2) this device must accept any interference received, including interference that may cause undesired operation. FCC warning: Any Changes or modifications not expressly approved by the party responsible for compliance could void the user's authority to operate the equipment. Note: This equipment has been tested and found to comply with the limits for a Class B digital device, pursuant to part 15 of the FCC Rules. These limits are designed to provide reasonable protection against harmful interference in a residential installation. This equipment generates uses and can radiate radio frequency energy and, if not installed and used in accordance with the instructions, may cause harmful interference to radio communications. However, there is no guarantee that interference will not occur in a particular installation. If this equipment does cause harmful interference to radio or television reception, which can be determined by turning the equipment off and on, the user is encouraged to try to correct the interference by one or more of the following measures: -Reorient or relocate the receiving antenna. -Increase the separation between the equipment and receiver. -Connect the equipment into an outlet on a circuit different from that to which the receiver is connected. -Consult the dealer or an experienced radio/TV technician for help. This equipment complies with FCC radiation exposure limits set forth for an uncontrolled environment. This equipment should be installed and operated with minimum distance 20cm between the radiator & your body.

PACKAGING INFORMATION

Details		Outer carton(battery included)	
Picture			
Quantity	456 pcs		
Size	32 x 23.5 x 40 cm		
Gross weight	19.1 kg		

QUALITY ASSURANCE

The factory has already obtained the certification of ISO9001 Quality System. Each product has been strictly tested (tests include transmission power, sensitivity, power consumption, stability, aging, etc.).

Warranty Period: 12 months from the date of shipping (Battery and other accessories excluded).

DECLARATION

Statement of Rights:


The contents of this manual belong to the Manufacturer of Minew Technologies Co., LTD, Shenzhen, and are protected by Chinese laws and applicable international conventions related to copyright laws. The contents can be revised by the company according to the technological development without prior notice. Anyone, companies, or organizations cannot modify the contents and cite the contents of this manual without Minew's permission, otherwise, Violators will be held accountable according to law.


Disclaimer:

Minew team reserves the right to the final explanation of the document and product differences. The Minew group is not responsible for liability of property or personal injury with the wrong operation if users develop related products without checking the technical specifications of this manual.



SHENZHEN MINEW TECHNOLOGIES CO., LTD.

 www.minew.com

 info@minew.com

 www.minewstore.com



 Minew Technologies