

LR10_認證報告

Model Name : ALP6Y-100006(WiFi 1)

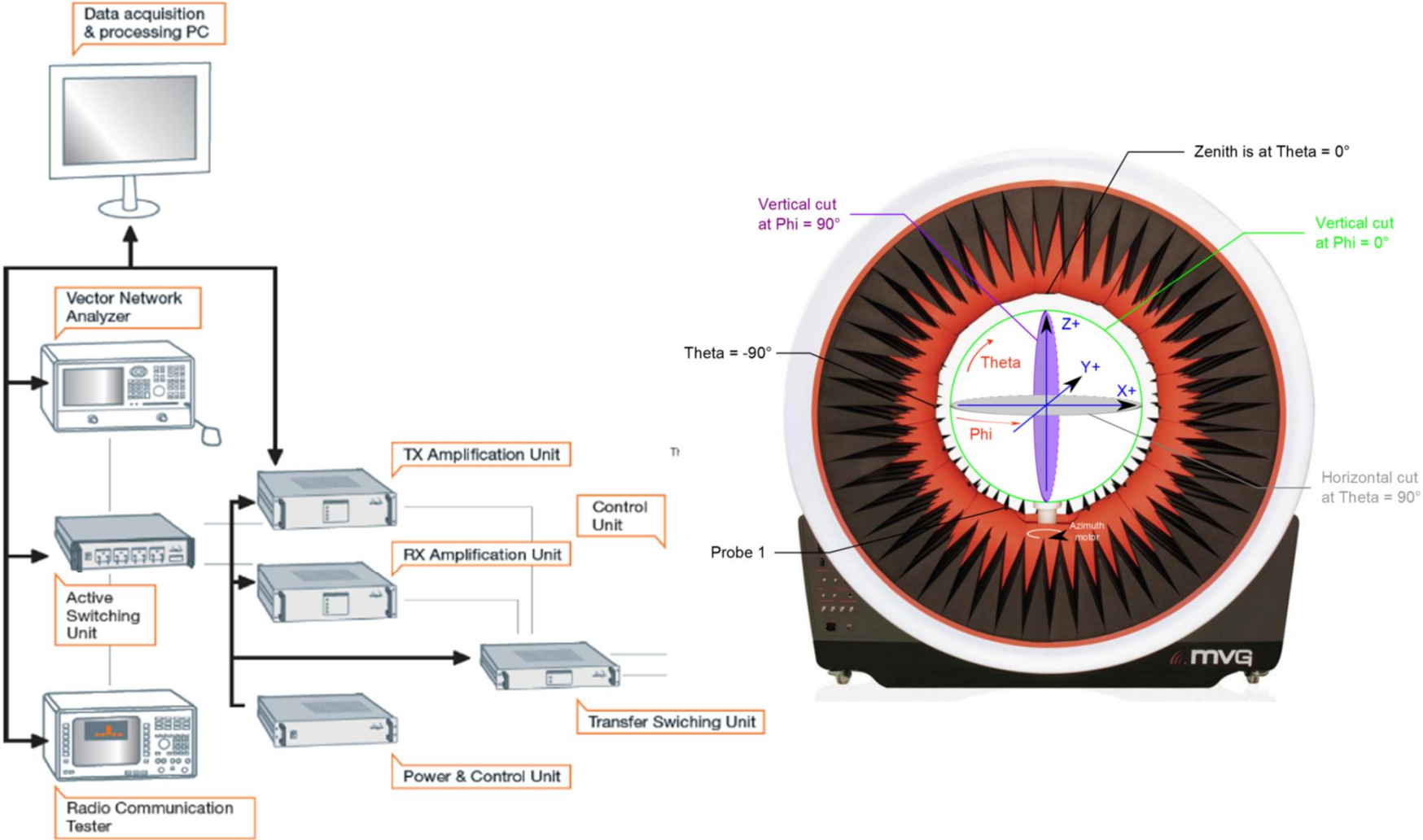
The Reliable industry high performance standard for Antennas
www.awan-ant.com



i **Content**

1. Test System
2. Specification
3. Return Test Data
4. Peak Gain Test Data
5. Gain/Efficiency/Test Data
6. Drawing Layout
7. Antenna Assembly Specifications
8. Antenna Photo (Front/Back)
9. Radiation characteristics of antenna loaded in Host Platform

Antenna Test System



Specification

- . Product Number : ALP6Y-100006(WiFi 1)
- . Version :

Electrical Characteristics

- . Frequency (MHz) :2400-2500MHz, 5150-5850MHz, 5925-7125MHz
- . Return Loss : < -7.5 dB
- . Efficiency : 42~52%
- . Peak Gain maximum values : 0.98 dBi
- . Impedance : 50 Ω
- . Polarization : Linear
- . Antenna Type : PIFA

Mechanical Characteristics

- . Cable / Connector : 1.13mm / IPEX
- . Material : SUS430

Environmental Condition

- . Operation Temperature : -30~+65 $^{\circ}\text{C}$
- . Storage Temperature : -30~+85 $^{\circ}\text{C}$

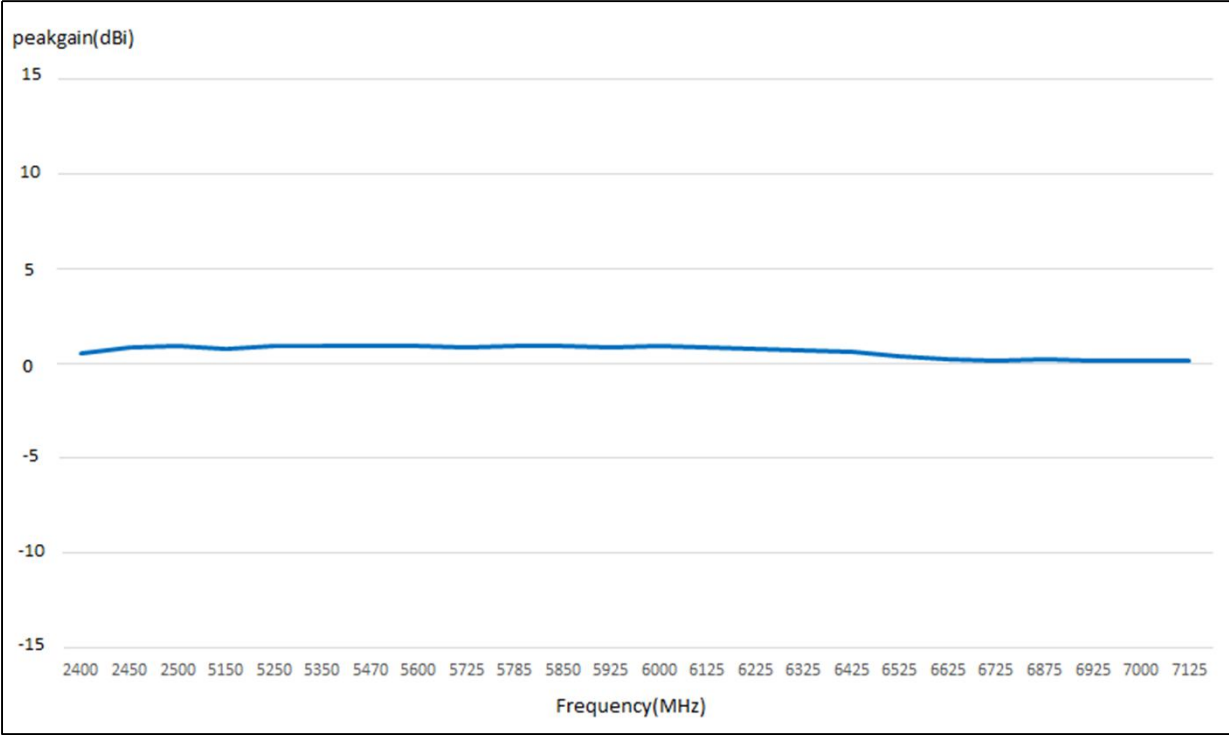
Return Test Data

i ALP6Y-100006 (WiFi 1)



Peak Gain Test Data

i ALP6Y-100006 (WiFi 1)



Gain / Efficiency Test Data

i ALP6Y-100006(WiFi 1)

Antenna Part Number	2400	2450	2500	5150	5250	5350	5470	5600
Peak Gain (dBi)	0.6	0.88	0.93	0.83	0.92	0.98	0.96	0.93
Efficiency (dBi)	-2.91	-2.89	-3.14	-2.97	-3.04	-3.04	-3.18	-3.13
Efficiency (%)	51.17	51.40	48.53	50.47	49.66	49.66	48.08	48.64
Antenna Part Number	5725	5785	5850	5925	6000	6125	6225	6325
Peak Gain (dBi)	0.87	0.95	0.92	0.89	0.97	0.85	0.76	0.71
Efficiency (dBi)	-3.08	-3.14	-3.27	-3.34	-3.40	-3.32	-3.69	-3.70
Efficiency (%)	49.20	48.53	47.10	46.34	45.71	46.56	42.76	42.66
Antenna Part Number	6425	6525	6625	6725	6875	6925	7000	7125
Peak Gain (dBi)	0.64	0.43	0.26	0.16	0.24	0.19	0.17	0.21
Efficiency (dBi)	-3.49	-3.47	-3.62	-3.44	-3.34	-3.36	-3.33	-3.32
Efficiency (%)	44.77	44.98	43.45	45.29	46.34	46.13	46.45	46.56

Drawing Layout

i ALP6Y-100006(WiFi 1)

AWAN P/N	ALP6Y-100006
Customer P/N	21U700074-003

Rev	EC#	Description	Drawn/Date	Checked/Date	Approved/Date
X1		New Release	Jerry 08/15/23	Sam 08/15/23	Sam 08/15/23

Item	Name	Q'ty	Part #	Material / Finish
5	線管	1		Tube
4	LR10_WIFL_1_Tape	1		Tape
3	#1.13 L/L Black Cable + 線管	1		CABLE
2	LR10_WIFL_1_Cu foil+mylar	1		Cu foil
1	LR10_WIFL_1_PCB	1		PCB

awana
 ADVANCED WIRELESS & ANTENNA INC.
 LR10_WIFL_1_ANT_HF_0801
 ALLBY Series A3
 C-ALBY-01-00 Rev. X1
 Customer Drawing

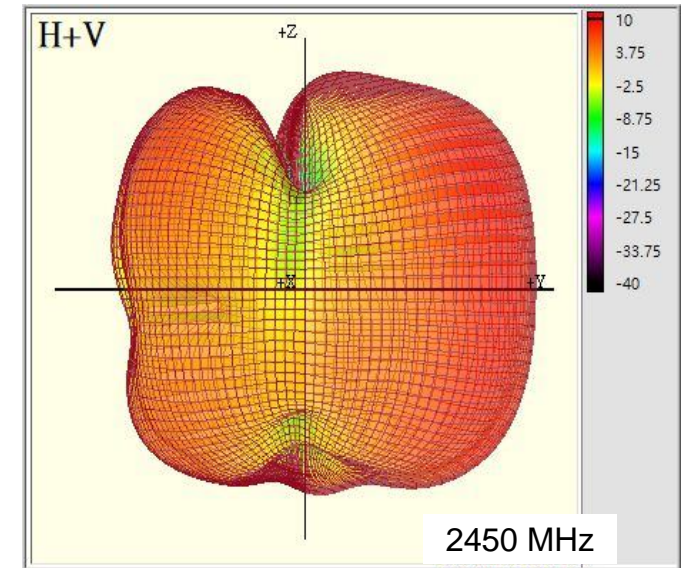
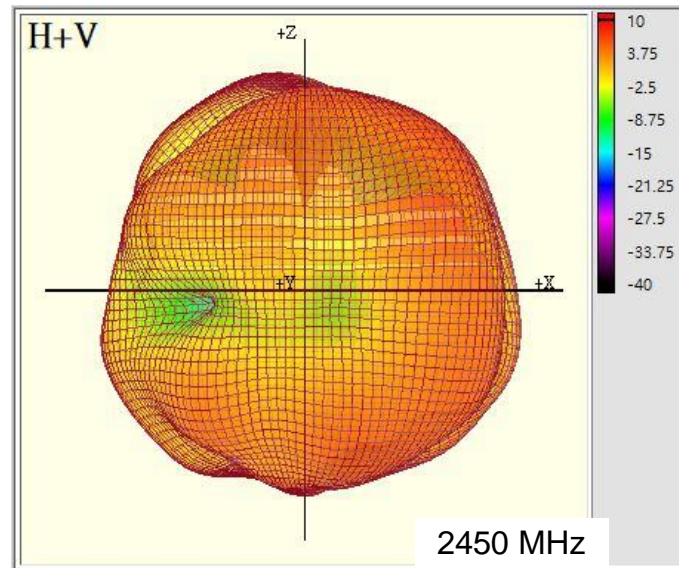
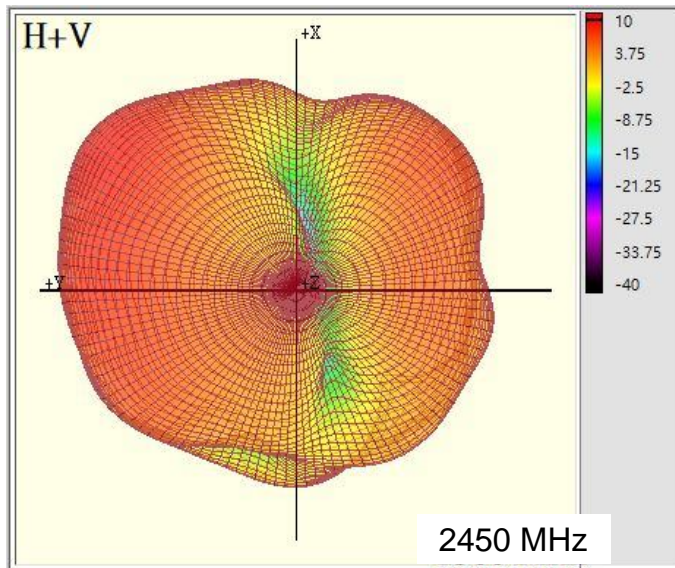
HALOGEN FREE

Antenna Assembly Specifications

Antenna Part Number	Manufacturer	Antenna Type	Cable Assembly Part Number and Information	Freq Range MHz	Peak Gain W/ Cable loss (dBi)	Peak Gain w/o Cable Loss (dBi)	Max Return Loss (dB)	Cable Loss (dB)
P/N: 21U700074-003 Vender P/N: ALP6Y-100006	AWAN	PIFA	I-pex:四代頭 P/N: 20565-001R-13 Coaxial length: 263mm Diameter: 1.13	2400-2500MHz	0.93	1.59	-7.5	0.66
				5150-5250MHz	0.92	2.00	-7.5	1.08
				5250-5350MHz	0.98	2.06	-7.5	1.08
				5470-5725MHz	0.96	2.06	-7.5	1.10
				5725-5850MHz	0.95	2.07	-7.5	1.12
				5850-5895MHz	0.92	2.06	-7.5	1.14
				5925-6425MHz	0.97	2.15	-7.5	1.18
				6425-6525MHz	0.64	1.82	-7.5	1.18
				6525-6875MHz	0.43	1.65	-7.5	1.22
				6875-7125MHz	0.21	1.47	-7.5	1.26

Radiation characteristics of antenna loaded in Host Platform @ 2450MHz:

i ALP6Y-100006(WiFi 1)



X-Y

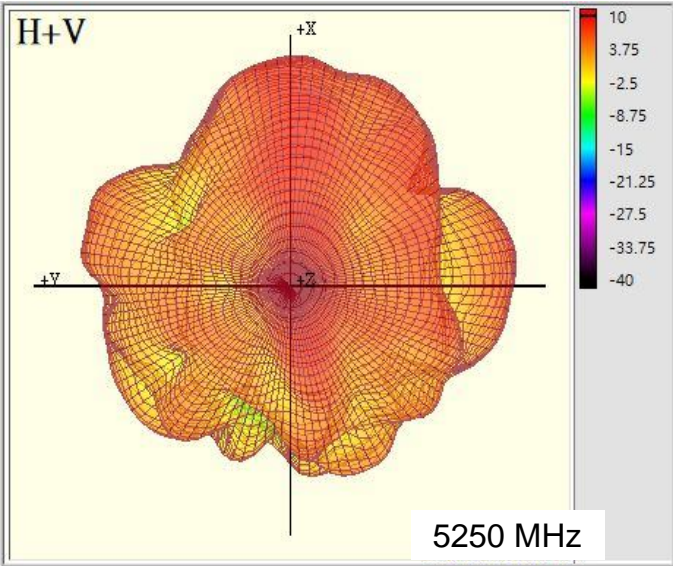
X-Z

Y-Z

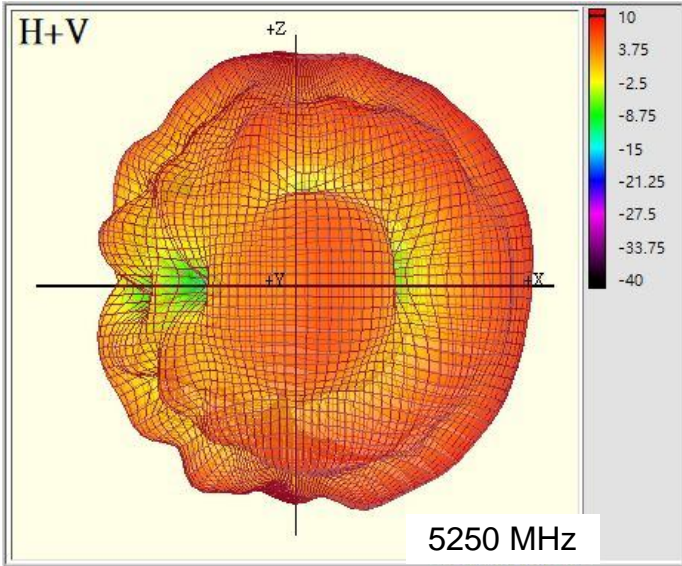


Radiation characteristics of antenna loaded in Host Platform @ 5250MHz:

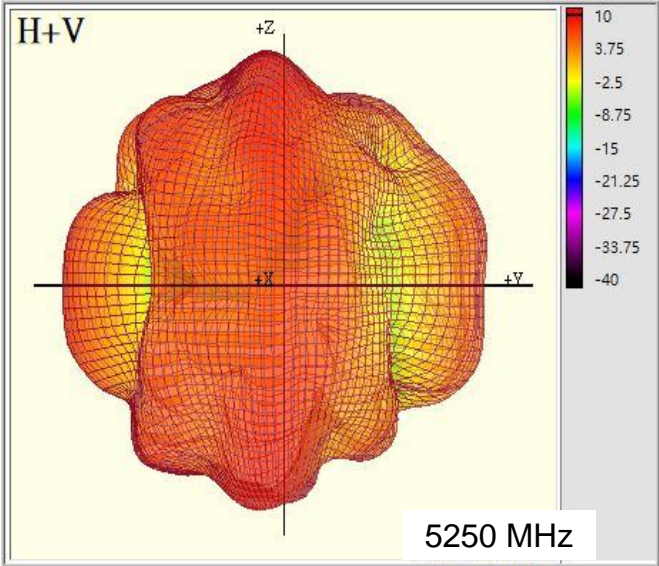
i ALP6Y-100006(WiFi 1)



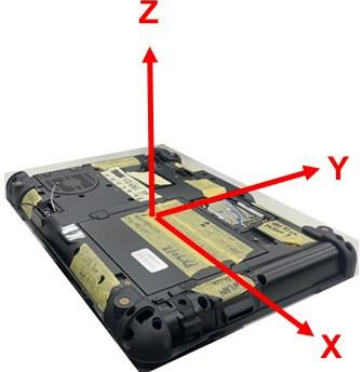
X-Y



X-Z

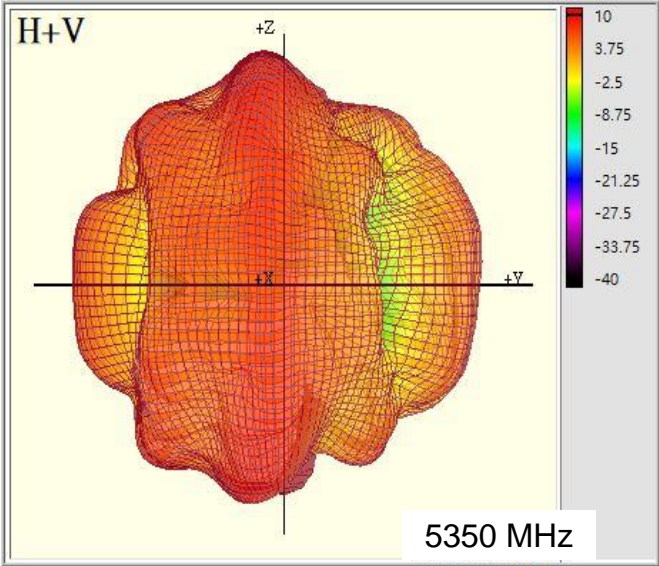
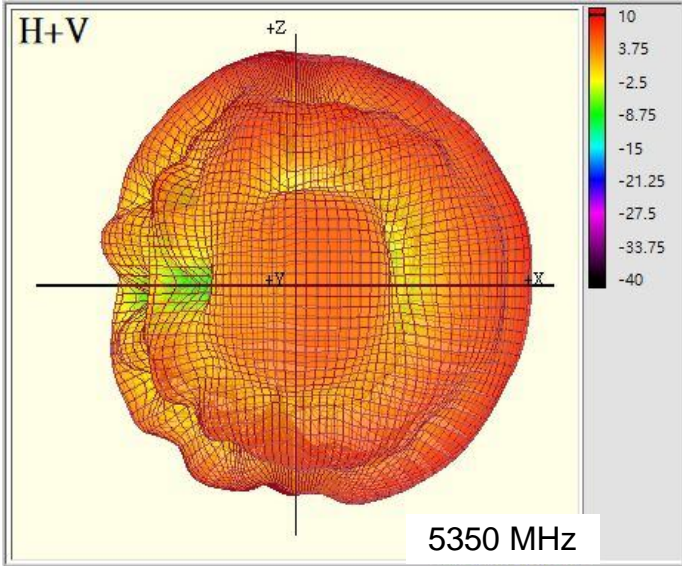
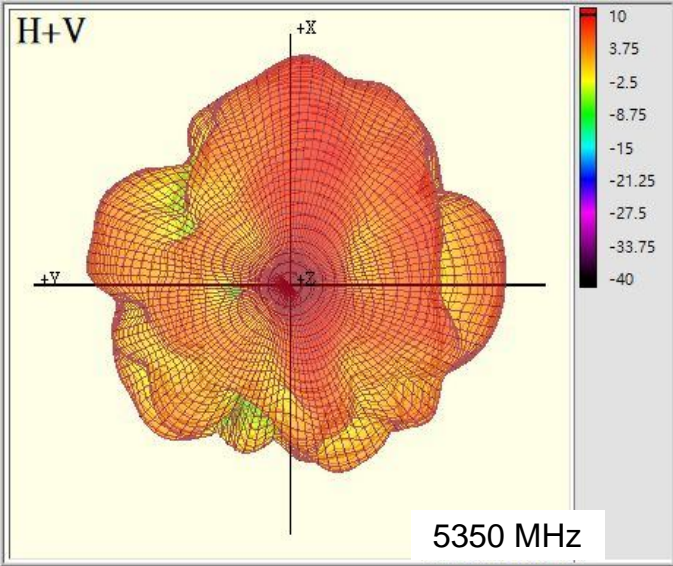


Y-Z



Radiation characteristics of antenna loaded in Host Platform @ 5350MHz:

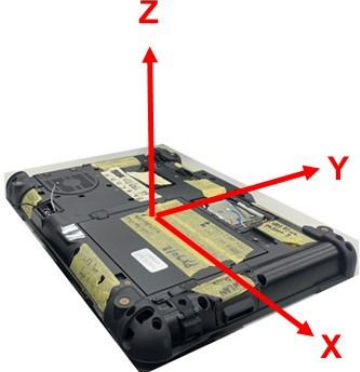
i ALP6Y-100006(WiFi 1)



X-Y

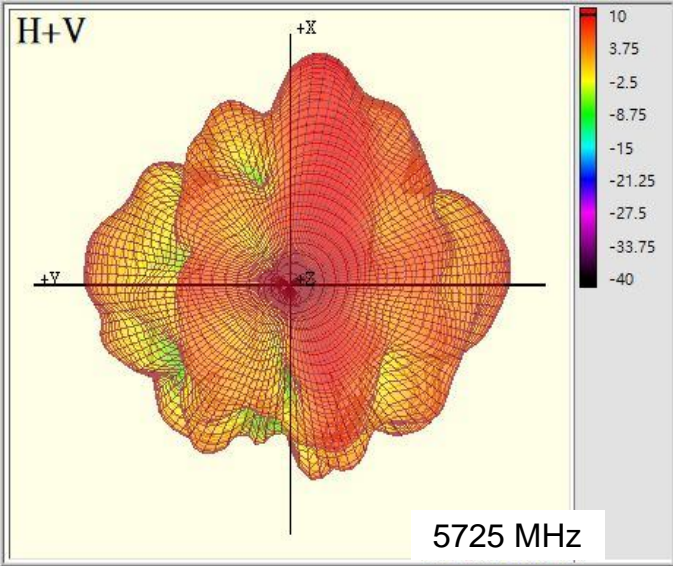
X-Z

Y-Z

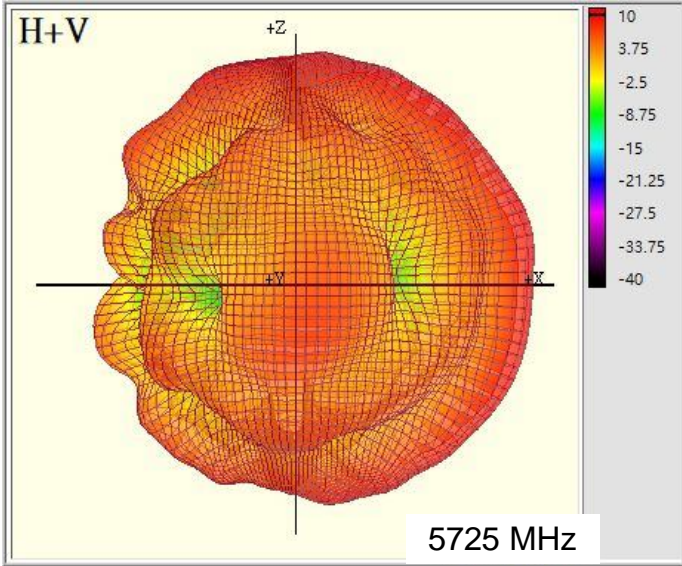


Radiation characteristics of antenna loaded in Host Platform @ 5725MHz:

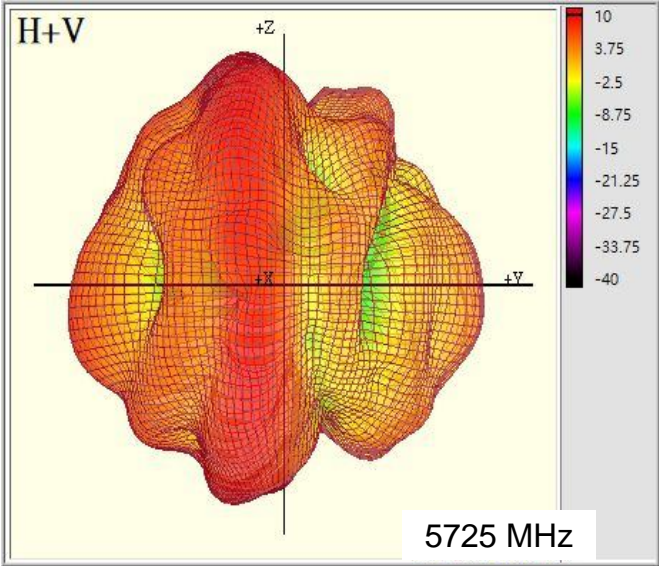
i ALP6Y-100006(WiFi 1)



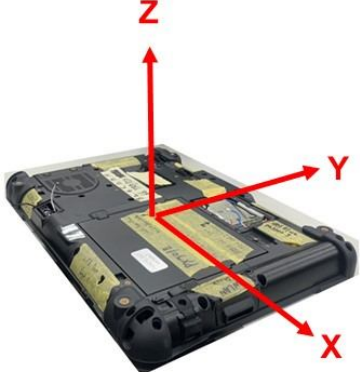
X-Y



X-Z

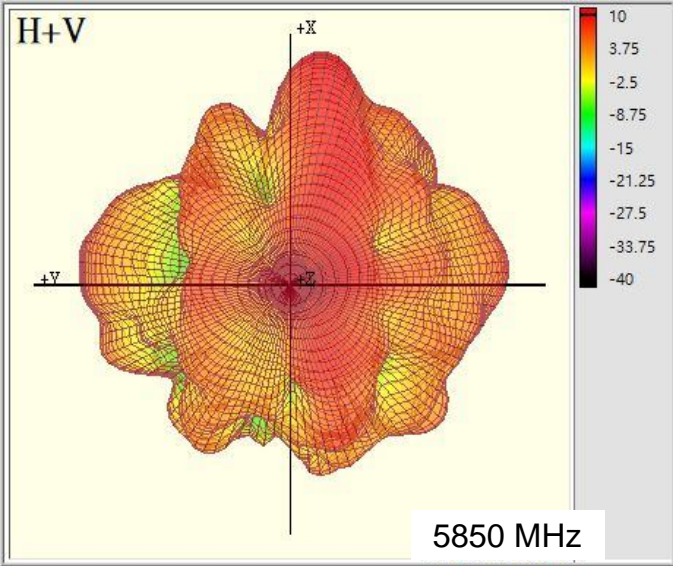


Y-Z

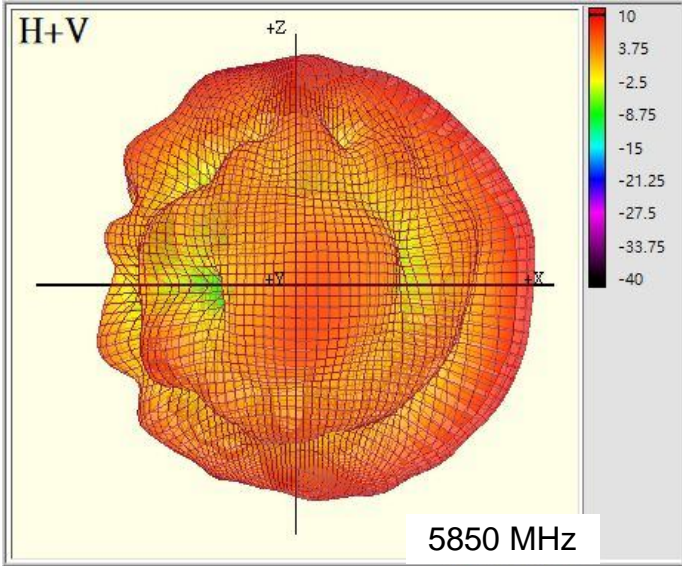


Radiation characteristics of antenna loaded in Host Platform @ 5850MHz:

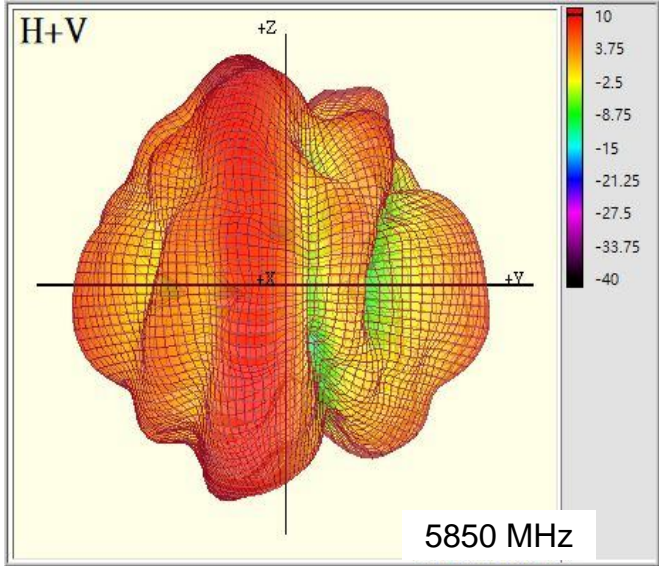
i ALP6Y-100006(WiFi 1)



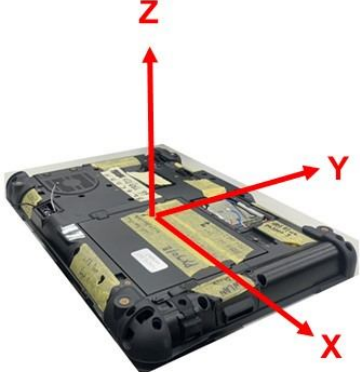
X-Y



X-Z

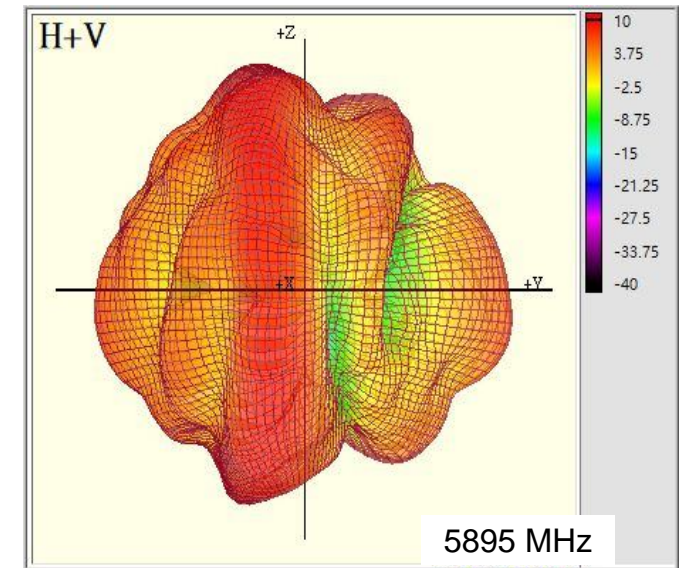
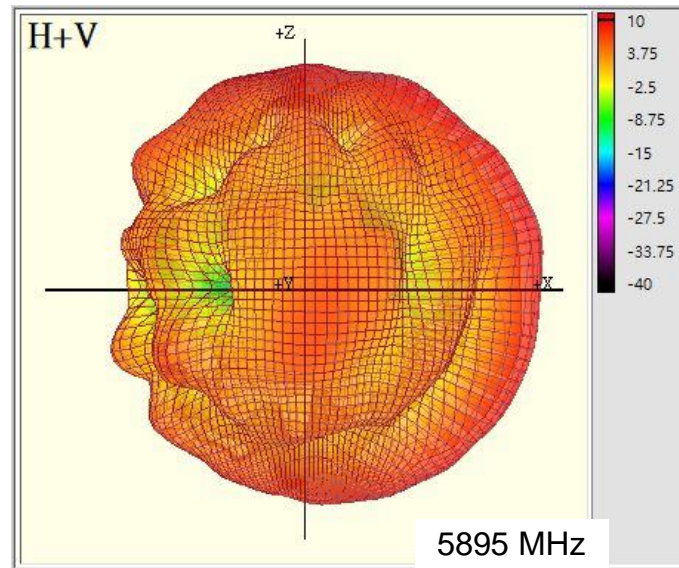
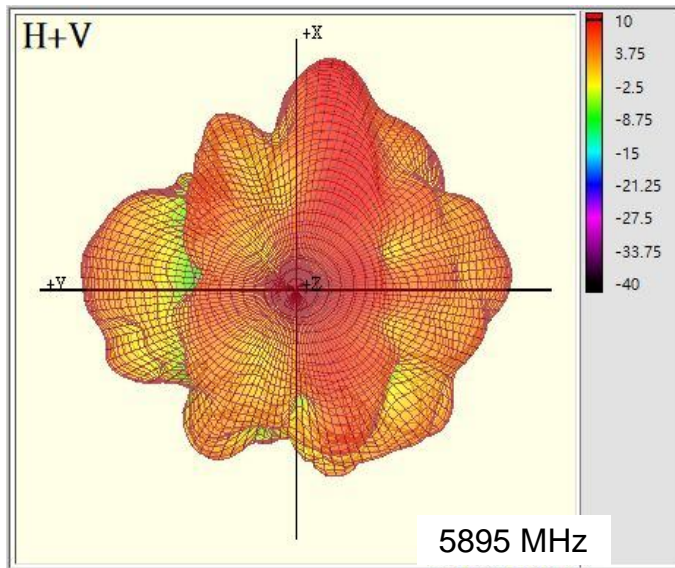


Y-Z



Radiation characteristics of antenna loaded in Host Platform @ 5895MHz:

i ALP6Y-100006(WiFi 1)



X-Y

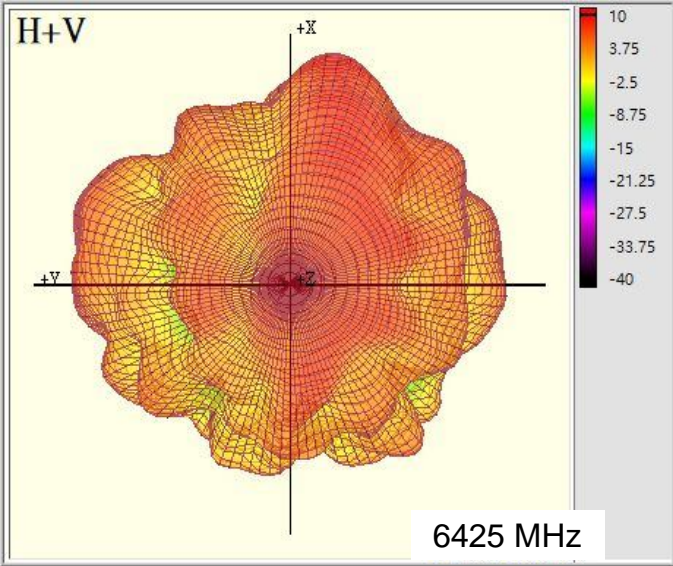
X-Z

Y-Z

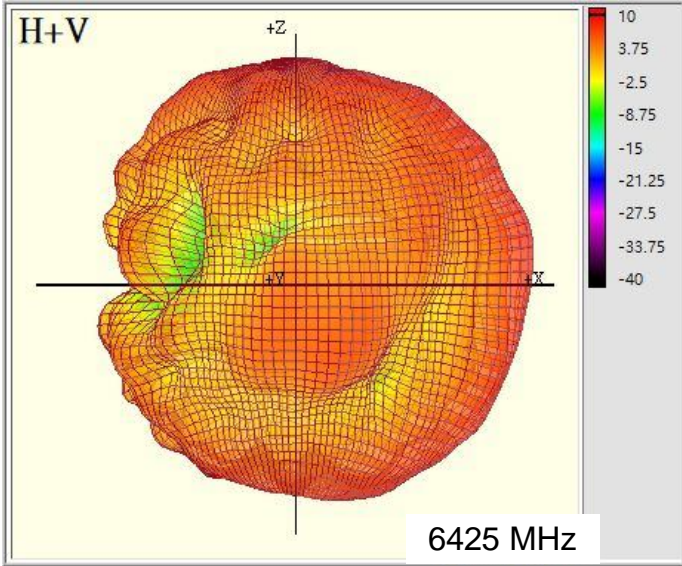


Radiation characteristics of antenna loaded in Host Platform @ 6425MHz:

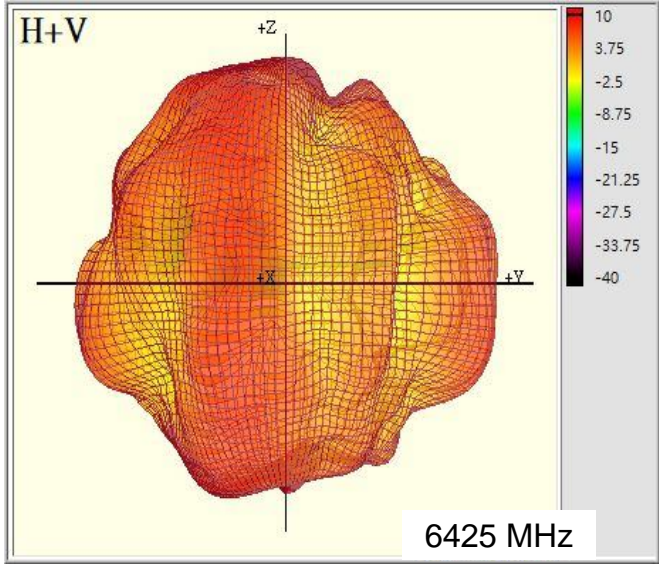
i ALP6Y-100006(WiFi 1)



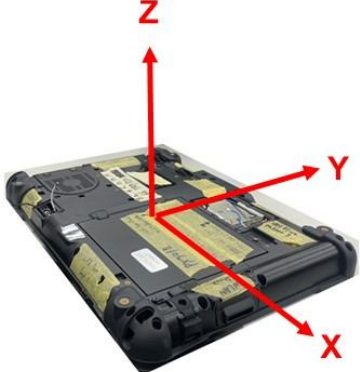
X-Y



X-Z

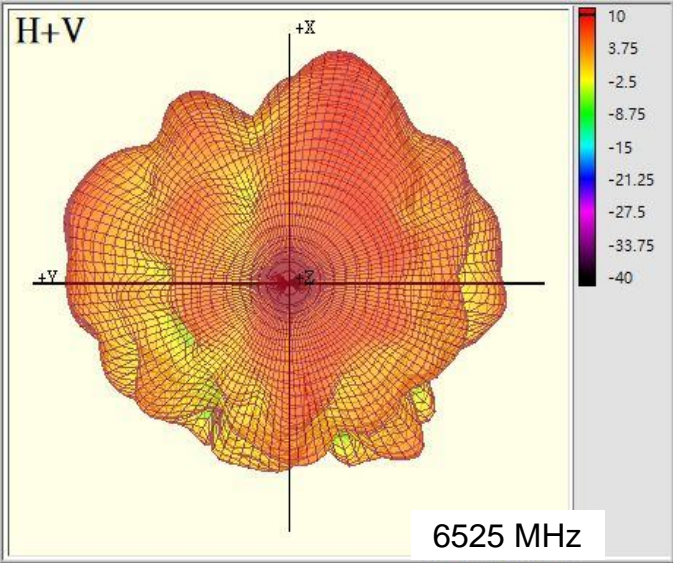


Y-Z

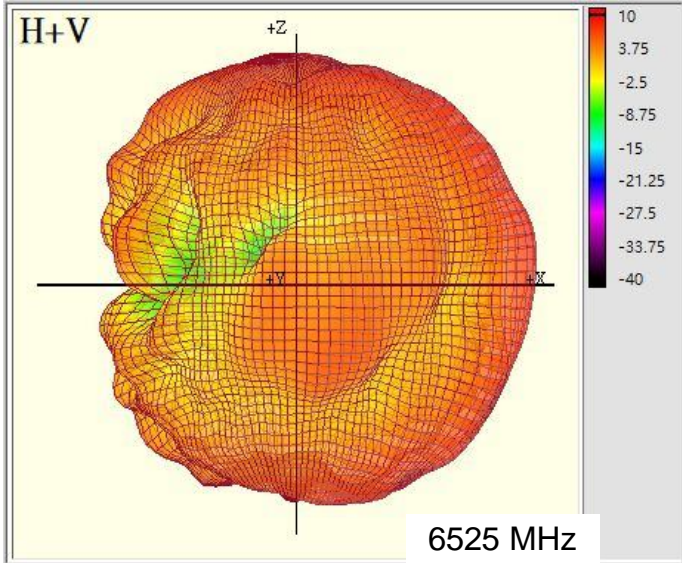


Radiation characteristics of antenna loaded in Host Platform @ 6525MHz:

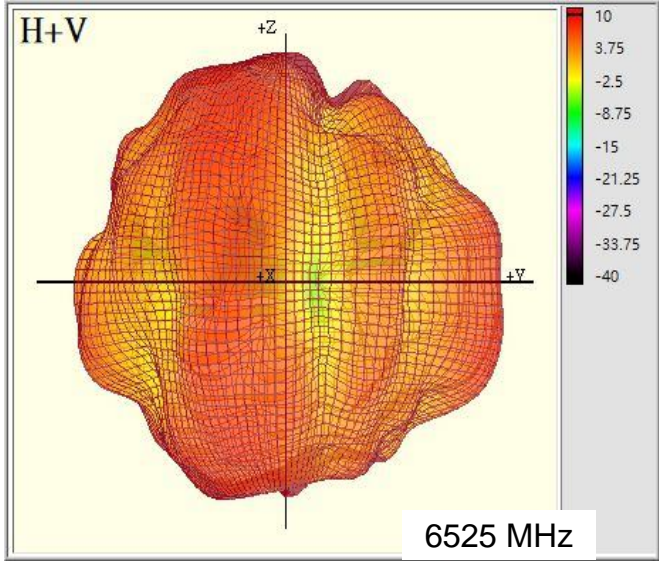
i ALP6Y-100006(WiFi 1)



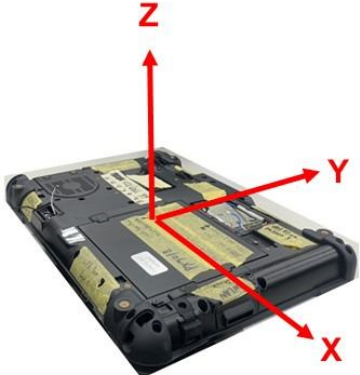
X-Y



X-Z

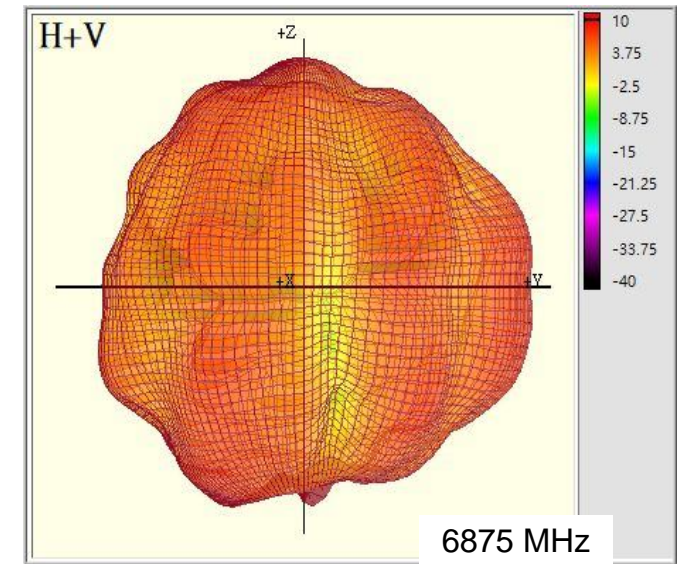
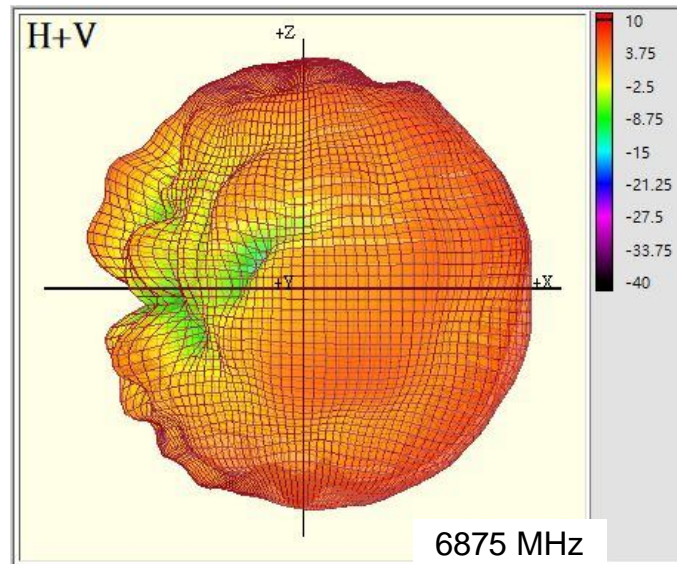
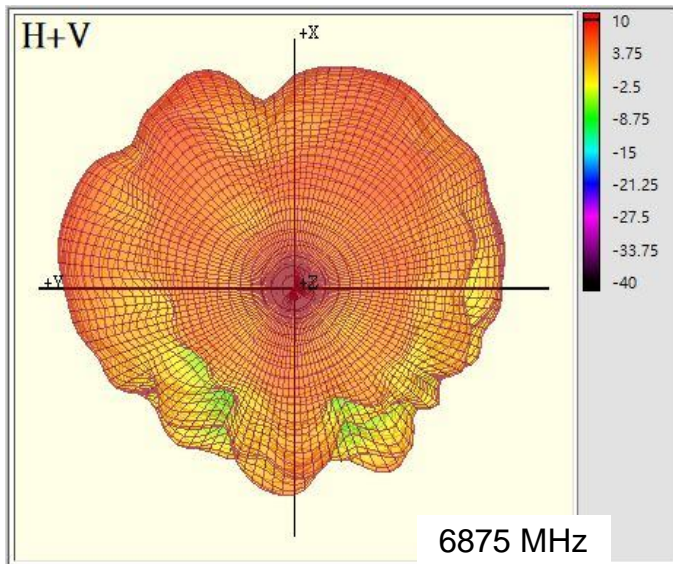


Y-Z



Radiation characteristics of antenna loaded in Host Platform @ 6875MHz:

i ALP6Y-100006(WiFi 1)



X-Y

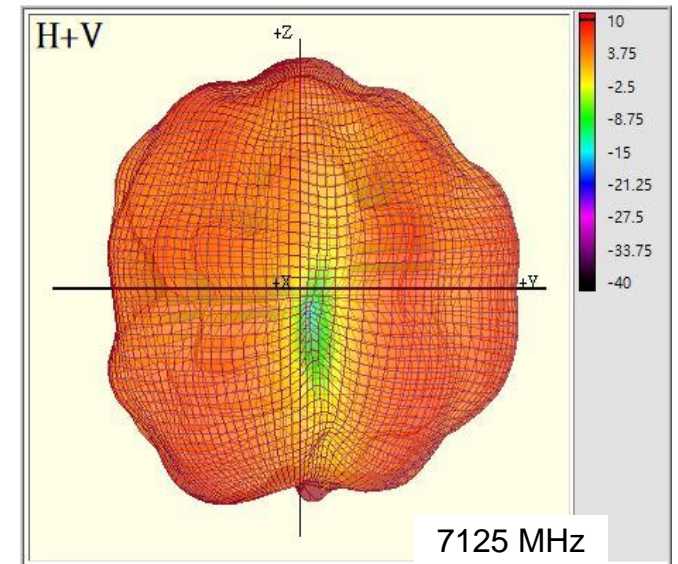
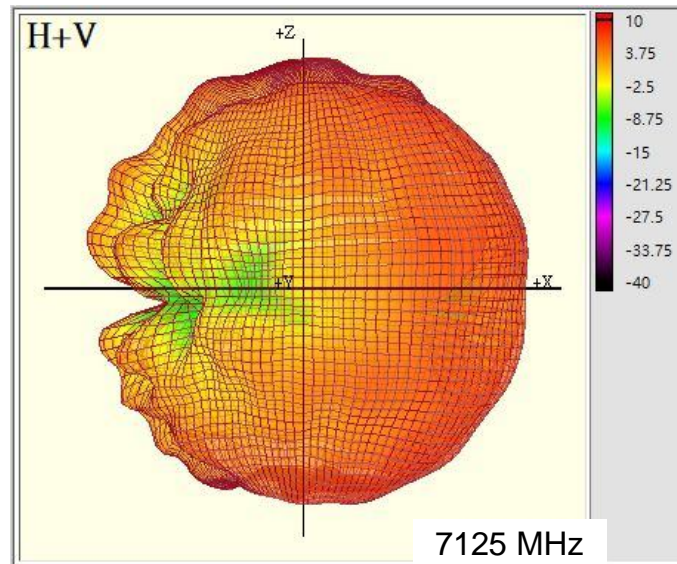
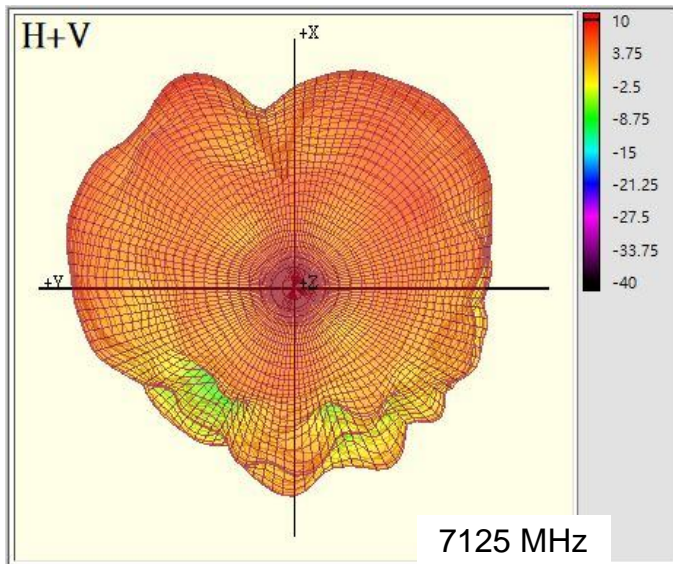
X-Z

Y-Z



Radiation characteristics of antenna loaded in Host Platform @ 7125MHz:

i ALP6Y-100006(WiFi 1)



X-Y

X-Z

Y-Z

