

## Measurement Report for 5G Verification Source

## Device Under Test Properties

Model, Manufacturer	Dimensions [mm]	Software Version	DUT Type
5G Verification Source,	100.0 x 100.0 x 172.0	3.2.0.1840	5G Verification Source

## Exposure Conditions

Phantom Section	Position, Test Distance [mm]	Frequency [MHz]	Conversion Factor
5G	FRONT, 10.00	10000.0	1.0

## Hardware Setup

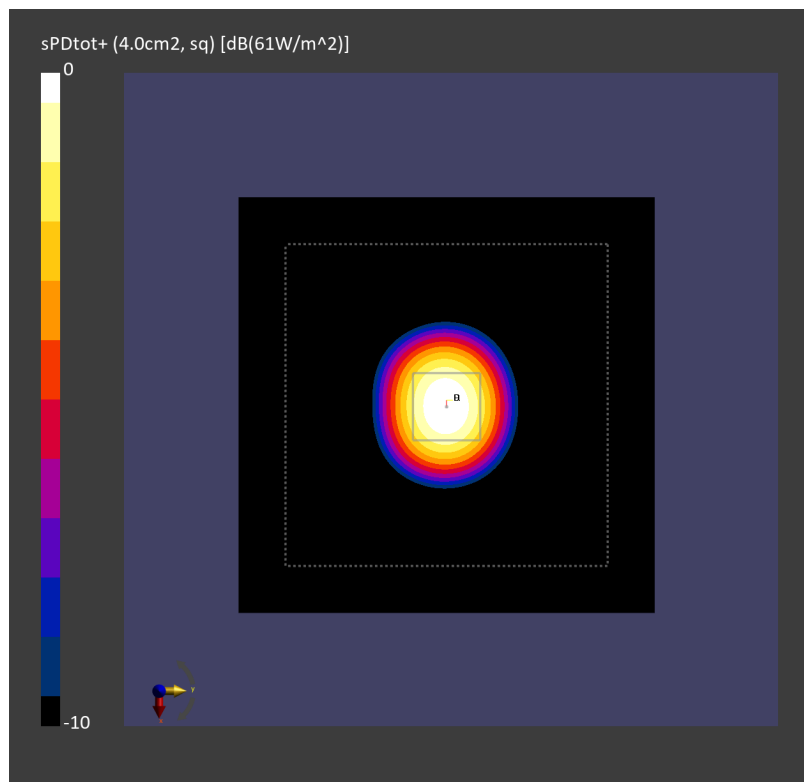
Phantom	Medium	Probe, Calibration Date	DAE, Calibration Date
mmWave - 1044	Air -	EUmmWV3 - SN9424_F1-55GHz, 2024-03-12	DAE4ip Sn1823, 2024-07-15

## Scans Setup

Scan Type	5G Scan
Grid Extents [mm]	120.0 x 120.0
Grid Steps [lambda]	0.125 x 0.125
Sensor Surface [mm]	10.0

## Measurement Results

Date	2025-01-22
Avg. Area [cm <sup>2</sup> ]	4.00
psPDn+ [W/m <sup>2</sup> ]	60.3
psPDtot+ [W/m <sup>2</sup> ]	61.0
H <sub>max</sub> [A/m]	0.438
E <sub>max</sub> [V/m]	158
max <sub>(Stot)</sub> [W/m <sup>2</sup> ]	67.7
Power Drift [dB]	0.03



## Measurement Report for Device

## Device Under Test Properties

Model, Manufacturer	Dimensions [mm]	Software Version	DUT Type
Device,	100.0 x 100.0 x 172.0	3.2.0.1840	5G Verification Source

## Exposure Conditions

Phantom Section	Position, Test Distance [mm]	Frequency [MHz]	Conversion Factor
5G	FRONT, 10.00	10000.0	1.0

## Hardware Setup

Phantom	Medium	Probe, Calibration Date	DAE, Calibration Date
mmWave - 1207	Air -	EUmmWV3 - SN9424_F1-55GHz, 2024-03-12	DAE4 Sn854, 2024-08-14

## Scans Setup

Scan Type	5G Scan
Grid Extents [mm]	120.0 x 120.0
Grid Steps [lambda]	0.25 x 0.25
Sensor Surface [mm]	10.0

## Measurement Results

Date	2025-02-14
Avg. Area [cm <sup>2</sup> ]	4.00
psPDn+ [W/m <sup>2</sup> ]	57.0
psPDtot+ [W/m <sup>2</sup> ]	57.4
H <sub>max</sub> [A/m]	0.443
E <sub>max</sub> [V/m]	155
max <sub>(Stot)</sub> [W/m <sup>2</sup> ]	67.3
Power Drift [dB]	0.03

