

LR10_認證報告

Model Name : ALP6Y-100007(WiFi 2)

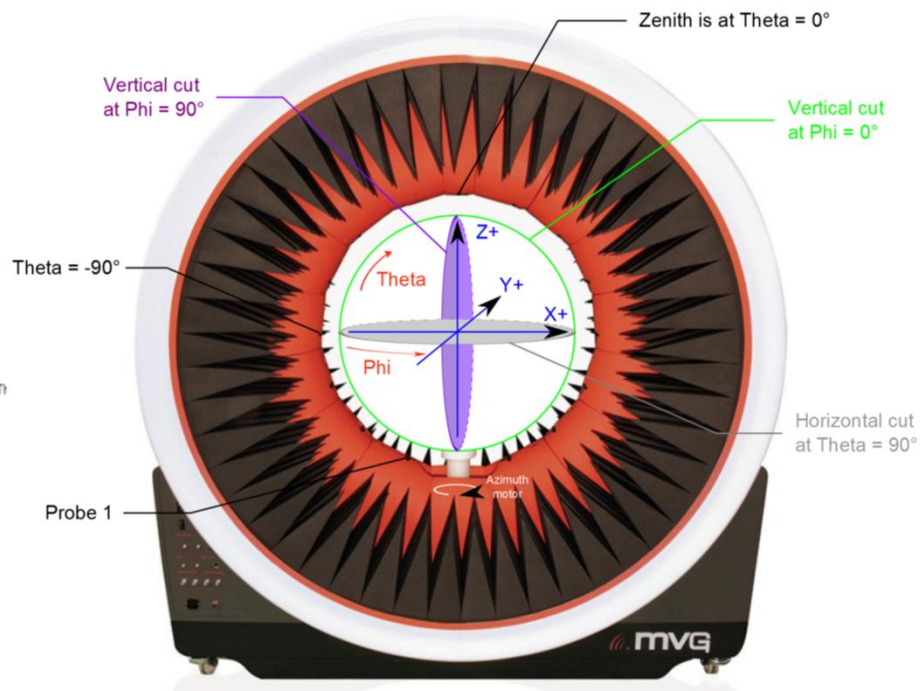
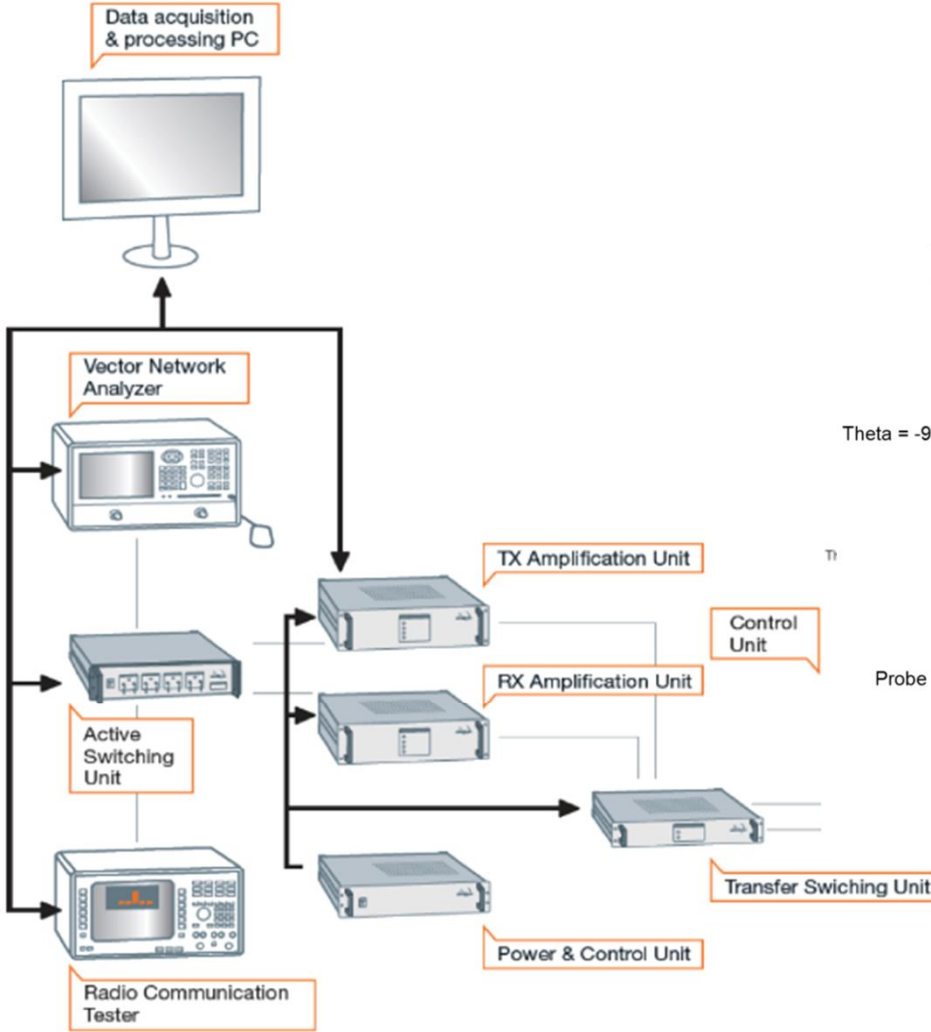
The Reliable industry high performance standard for Antennas
www.awan-ant.com



i **Content**

1. Test System
2. Specification
3. Return Test Data
4. Peak Gain Test Data
5. Gain/Efficiency/Test Data
6. Drawing Layout
7. Antenna Assembly Specifications
8. Antenna Photo (Front/Back)
9. Radiation characteristics of antenna loaded in Host Platform

Antenna Test System



Specification

- . Product Number : ALP6Y-100007(WiFi 2)
- . Version :

Electrical Characteristics

- . Frequency (MHz) :2400-2500MHz, 5150-5850MHz, 5925-7125MHz
- . Return Loss : < -7.5 dB
- . Efficiency : 31 ~ 47%
- . Peak Gain maximum values : 0.97 dBi
- . Impedance : 50 Ω
- . Polarization : Linear
- . Antenna Type : PIFA

Mechanical Characteristics

- . Cable / Connector : 1.13mm / IPEX
- . Material : SUS430

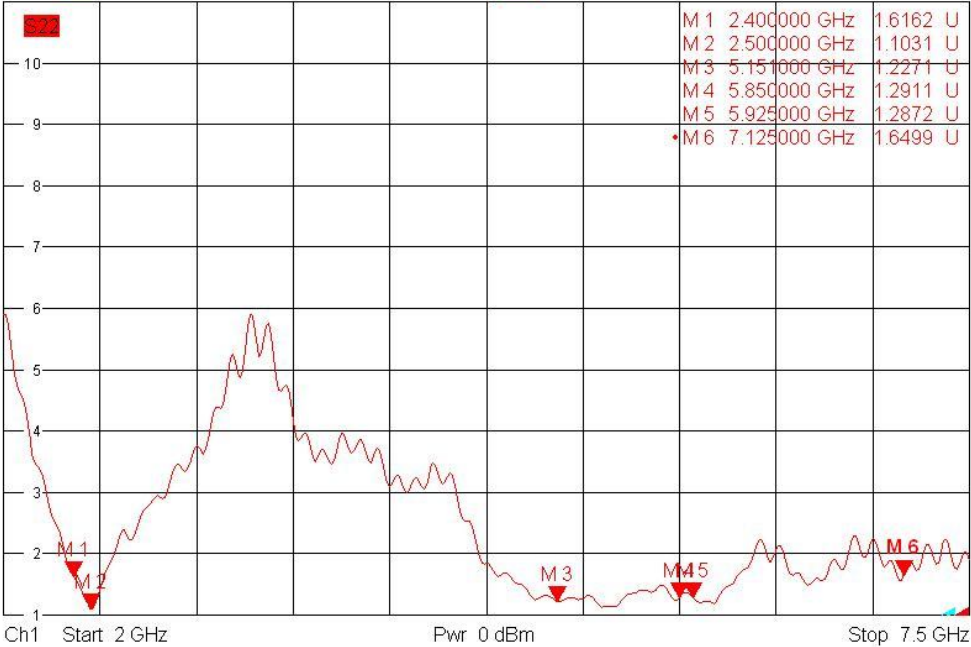
Environmental Condition

- . Operation Temperature : -30 ~ +65 $^{\circ}\text{C}$
- . Storage Temperature : -30 ~ +85 $^{\circ}\text{C}$

Return Test Data

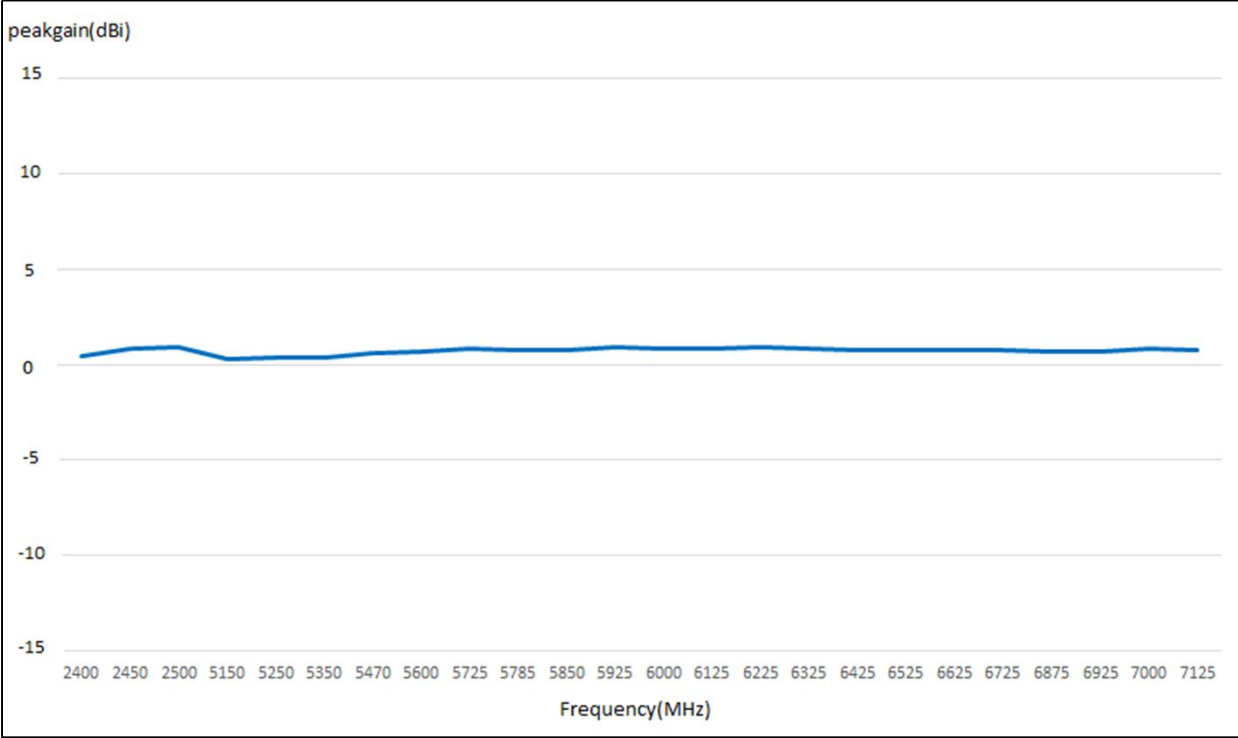
i ALP6Y-100007 (WiFi 2)

Trc1 S22 SWR 1 U/ Ref 1 U Cal int Mem4[Trc1] S22 SWR 1 U/ Ref 1 U Invisible 1 (Max)



Peak Gain Test Data

i ALP6Y-100007 (WiFi 2)



Gain / Efficiency Test Data

i ALP6Y-100007(WiFi 2)

Antenna Part Number	2400	2450	2500	5150	5250	5350	5470	5600
Peak Gain (dBi)	0.48	0.89	0.94	0.36	0.42	0.38	0.64	0.7
Efficiency (dBi)	-3.37	-3.23	-2.74	-3.72	-3.79	-3.76	-3.77	-3.7
Efficiency (%)	46.03	47.53	53.21	42.46	41.78	42.07	41.98	42.66
Antenna Part Number	5725	5785	5850	5925	6000	6125	6225	6325
Peak Gain (dBi)	0.85	0.82	0.81	0.94	0.91	0.89	0.97	0.86
Efficiency (dBi)	-3.53	-3.51	-3.5	-3.42	-3.53	-3.85	-3.82	-3.66
Efficiency (%)	44.36	44.57	44.67	45.50	44.36	41.21	41.50	43.05
Antenna Part Number	6425	6525	6625	6725	6875	6925	7000	7125
Peak Gain (dBi)	0.82	0.77	0.83	0.79	0.73	0.74	0.85	0.82
Efficiency (dBi)	-3.78	-3.81	-3.99	-4.08	-3.77	-3.89	-3.94	-4.24
Efficiency (%)	41.88	41.59	39.90	39.08	41.98	40.83	40.36	37.67

Drawing Layout

i ALP6Y-100007(WiFi 2)

AWAN P/N	ALP6Y-100007
Customer P/N	21U700075-003

Rev.	By	Description	Drawn/Date	Checked/Date	Approved/Date
X1		New Release	Jetty 08/15/23	Sam 08/15/23	Sam 08/15/23

Part	Name	Qty	Part #	Material / Finish
5	PCB	1		PCB
4	LR10_WIFL_2_Tape	1		Tape
3	Ø1.13 L/L White Cable + 銅線	1		CABLE
2	LR10_WIFL_2_Cu-Mylar	1		Cu-Mylar
1	LR10_WIFL_2_PCB	1		PCB

HALOGEN FREE

AWAN

 ADVANCED WIRELESS & ANTENNA INC.

LR10_WIFL_2_ANT_HF_0801

ALBY

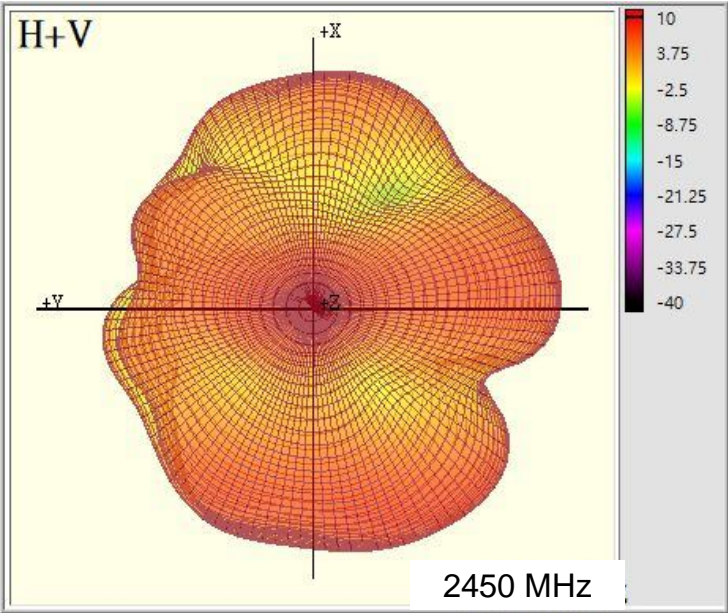
 Customer Drawing

Antenna Assembly Specifications

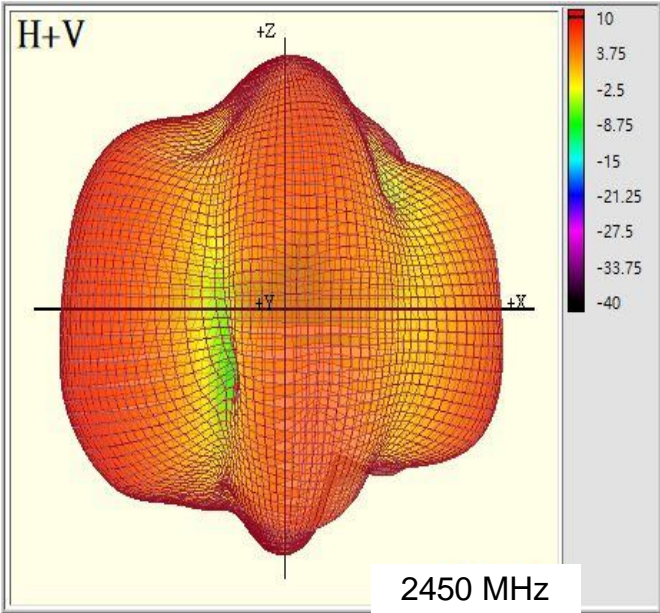
Antenna Part Number	Manufacturer	Antenna Type	Cable Assembly Part Number and Information	Freq Range MHz	Peak Gain W/ Cable loss (dBi)	Peak Gain w/o Cable Loss (dBi)	Max Return Loss (dB)	Cable Loss (dB)
P/N: 21U700075-003 Vender P/N: ALP6Y-100007	AWAN	PIFA	I-pex:四代頭 P/N: 20565-001R-13 Coaxial length: 170mm Diameter: 1.13	2400-2500MHz	0.94	1.37	-7.5	0.43
				5150-5250MHz	0.42	1.12	-7.5	0.70
				5250-5350MHz	0.42	1.12	-7.5	0.70
				5470-5725MHz	0.85	1.56	-7.5	0.71
				5725-5850MHz	0.85	1.57	-7.5	0.72
				5850-5895MHz	0.94	1.68	-7.5	0.74
				5925-6425MHz	0.97	1.74	-7.5	0.77
				6425-6525MHz	0.82	1.59	-7.5	0.77
				6525-6875MHz	0.83	1.62	-7.5	0.79
				6875-7125MHz	0.85	1.67	-7.5	0.82

Radiation characteristics of antenna loaded in Host Platform @ 2450MHz:

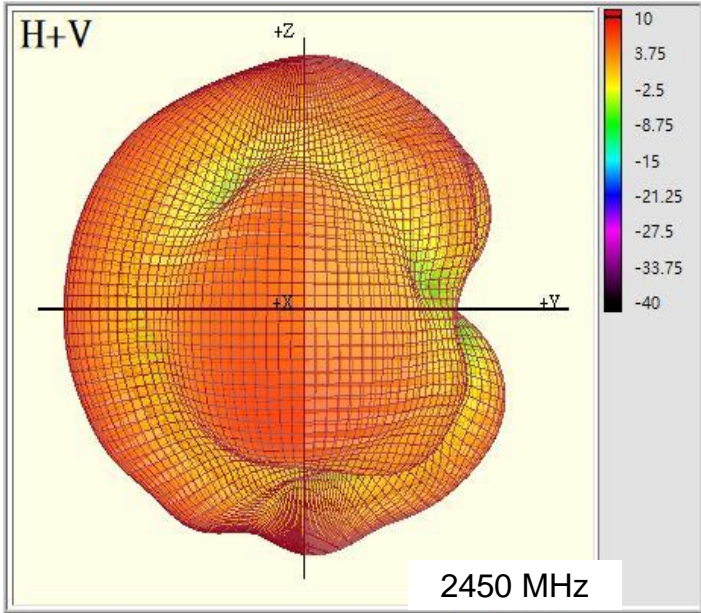
i ALP6Y-100007(WiFi 2)



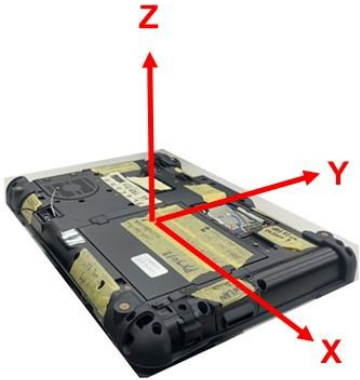
X-Y



X-Z

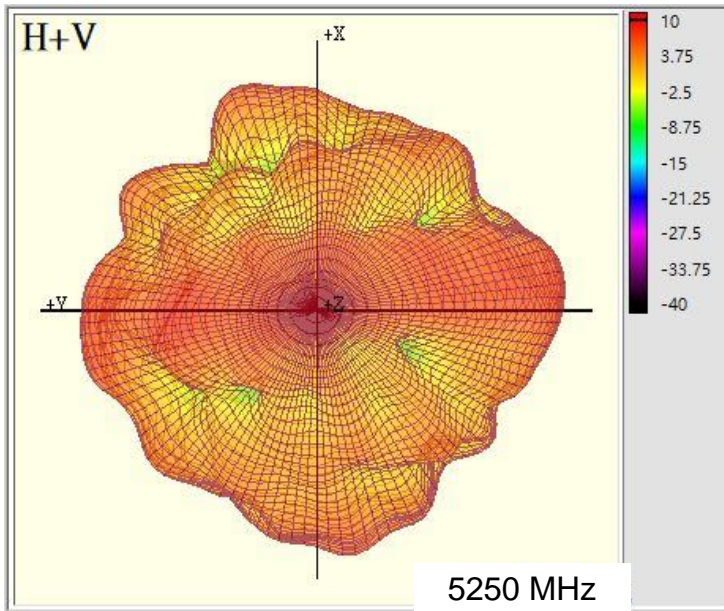


Y-Z

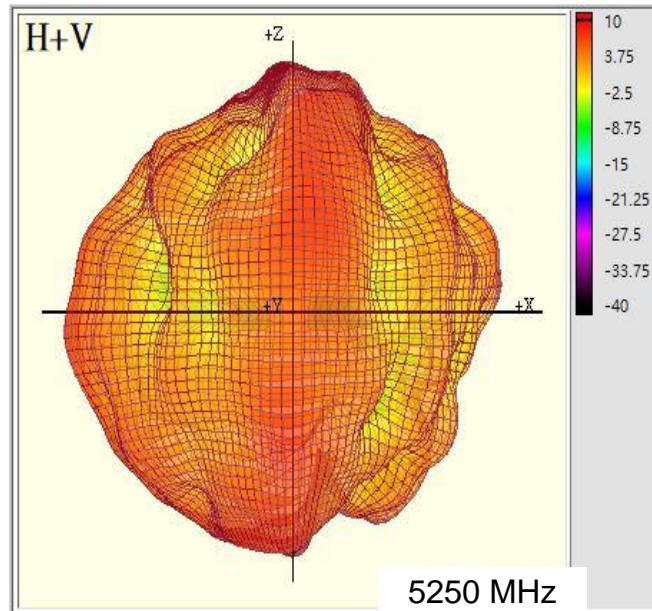


Radiation characteristics of antenna loaded in Host Platform @ 5250MHz:

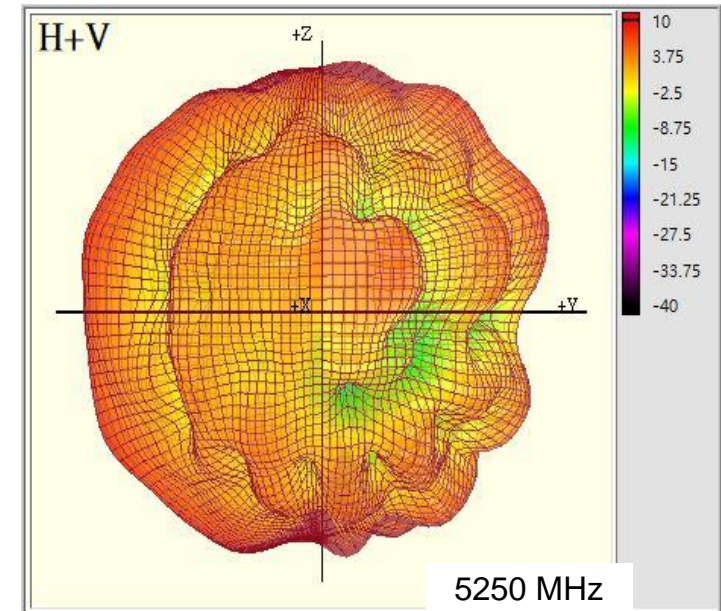
i ALP6Y-100007(WiFi 2)



X-Y



X-Z

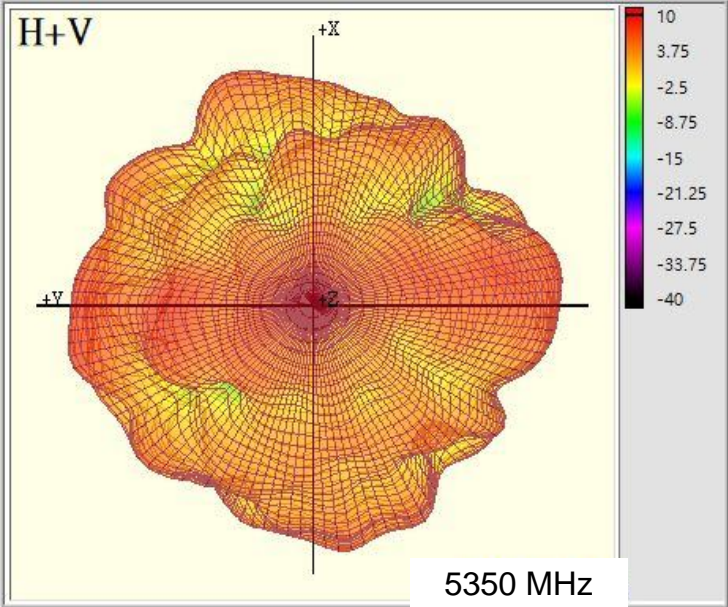


Y-Z

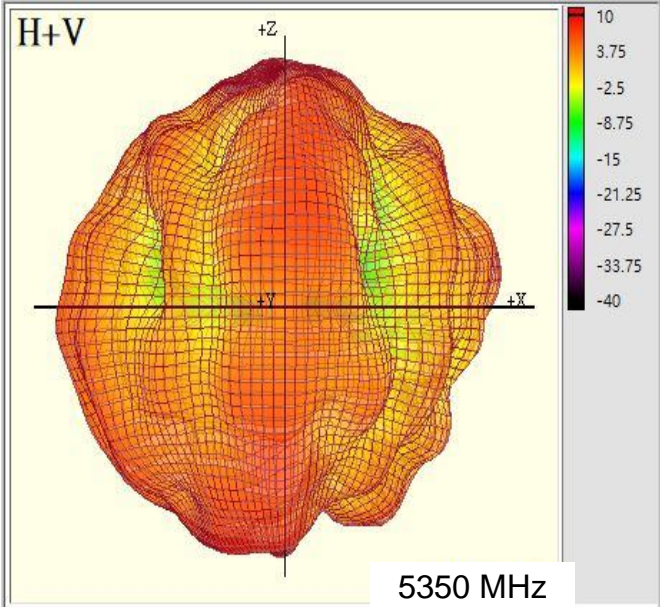


Radiation characteristics of antenna loaded in Host Platform @ 5350MHz:

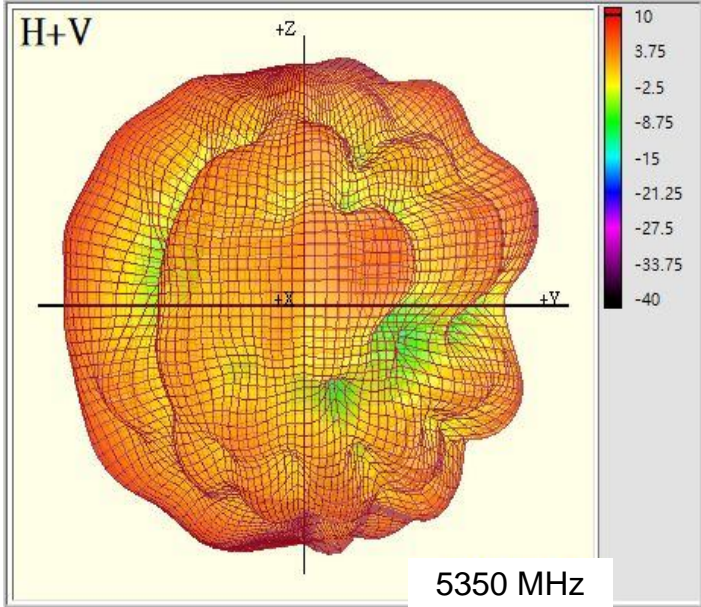
i ALP6Y-100007(WiFi 2)



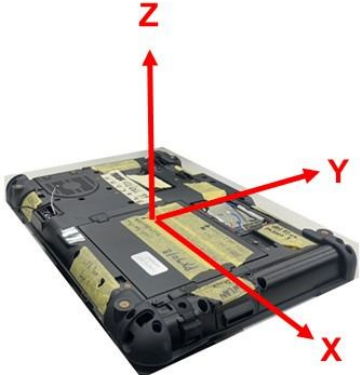
X-Y



X-Z

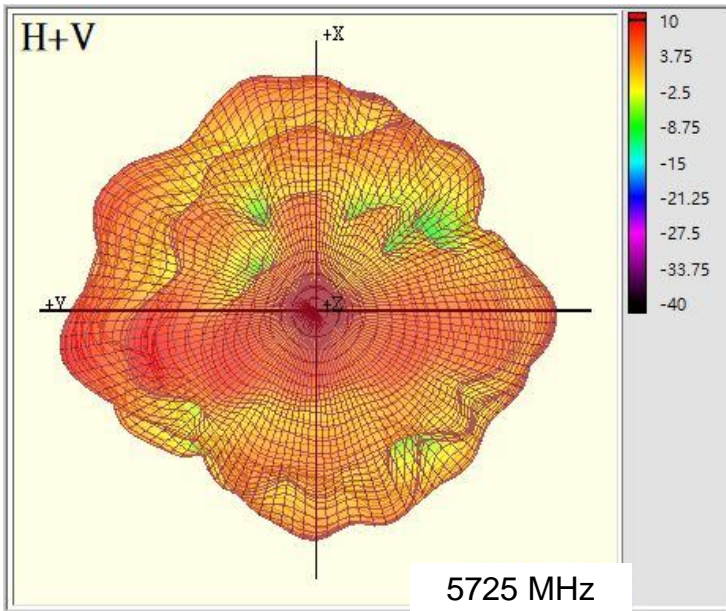


Y-Z

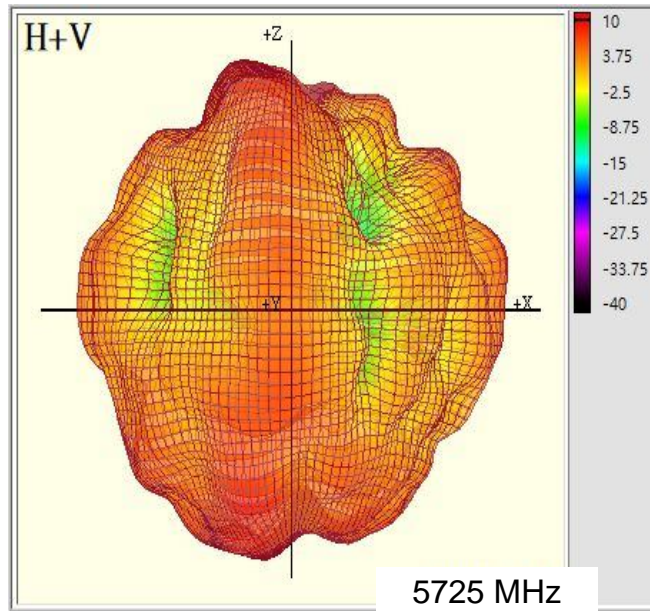


Radiation characteristics of antenna loaded in Host Platform @ 5725MHz:

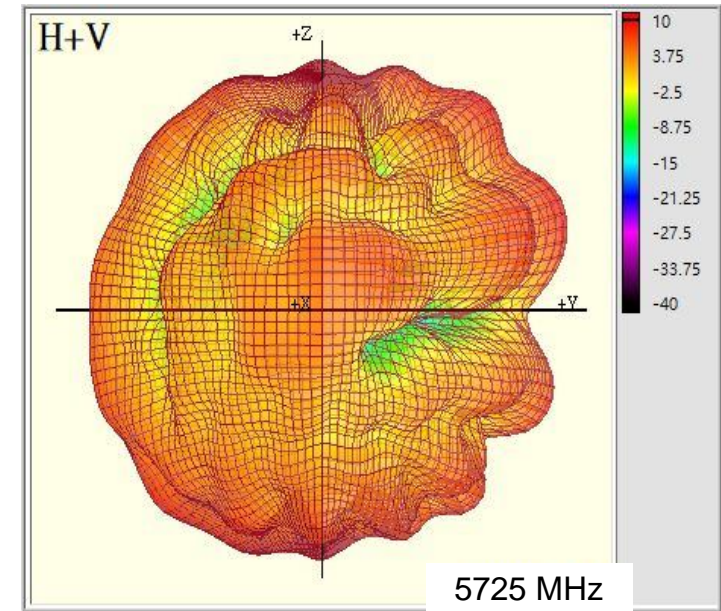
i ALP6Y-100007(WiFi 2)



X-Y



X-Z

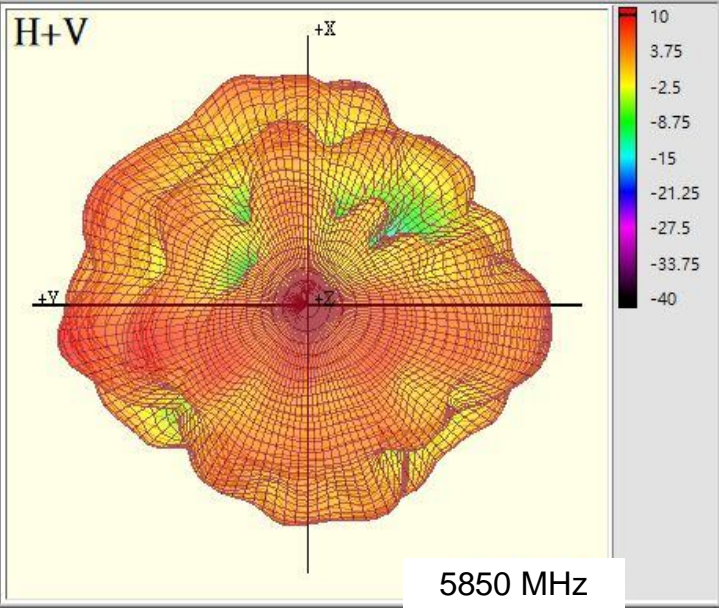


Y-Z

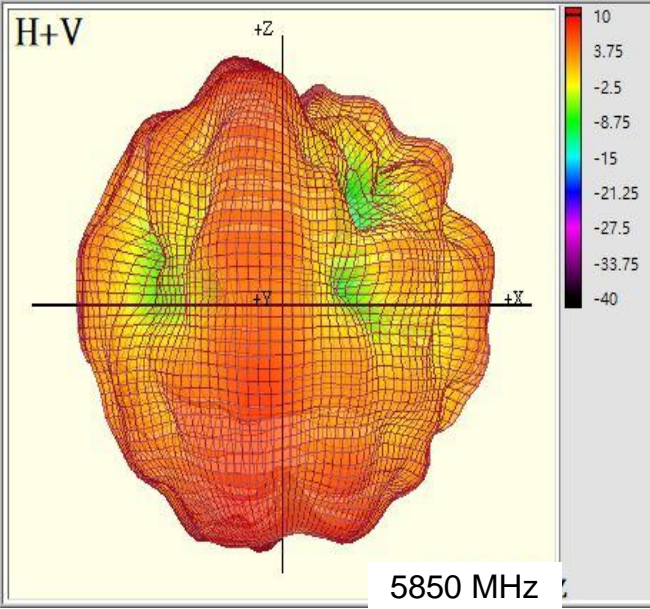


Radiation characteristics of antenna loaded in Host Platform @ 5850MHz:

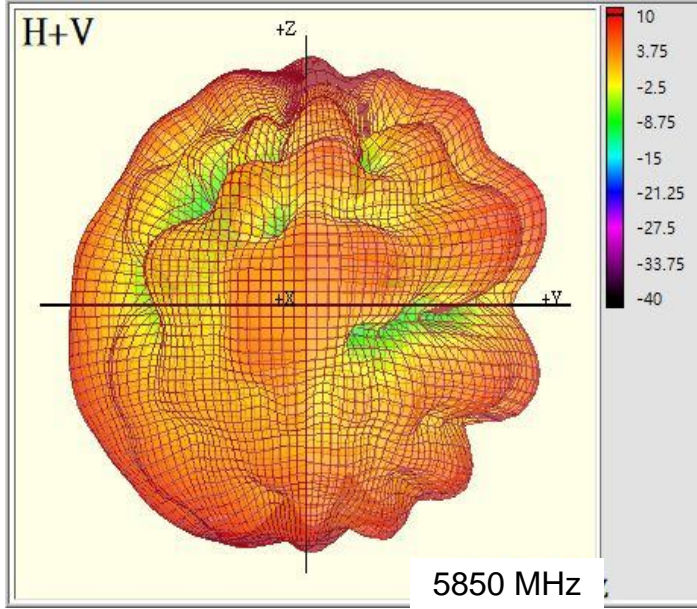
i ALP6Y-100007(WiFi 2)



X-Y



X-Z

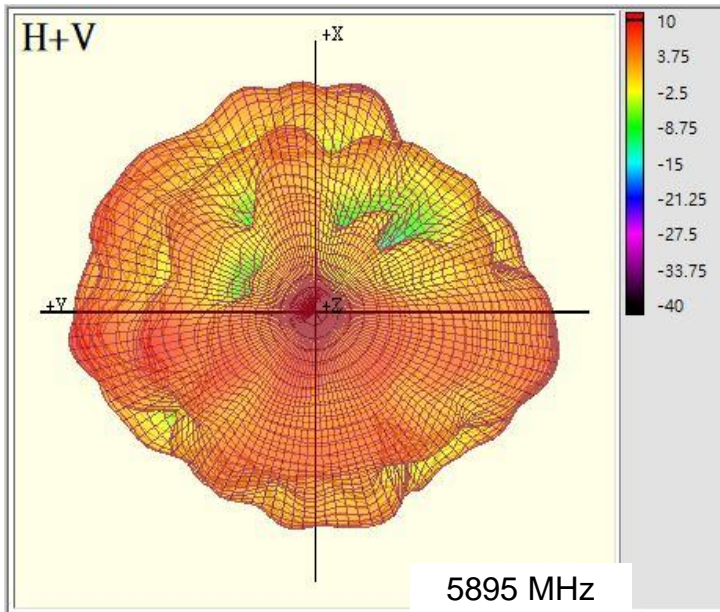


Y-Z

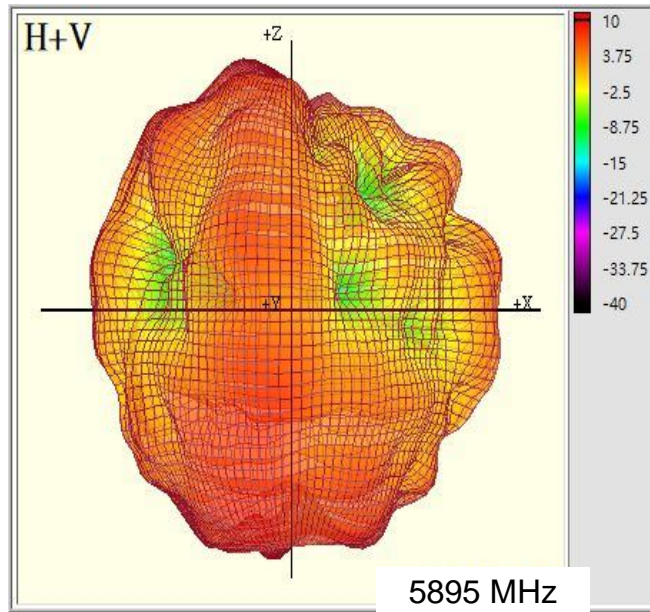


Radiation characteristics of antenna loaded in Host Platform @ 5895MHz:

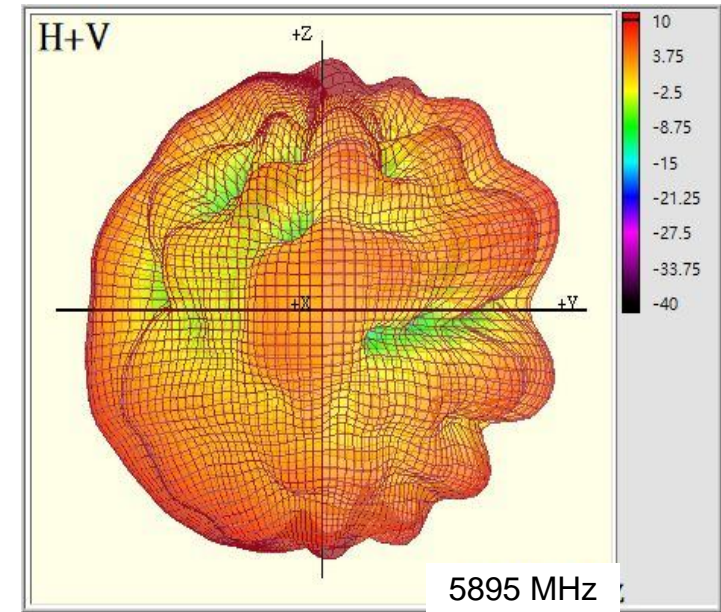
i ALP6Y-100007(WiFi 2)



X-Y



X-Z

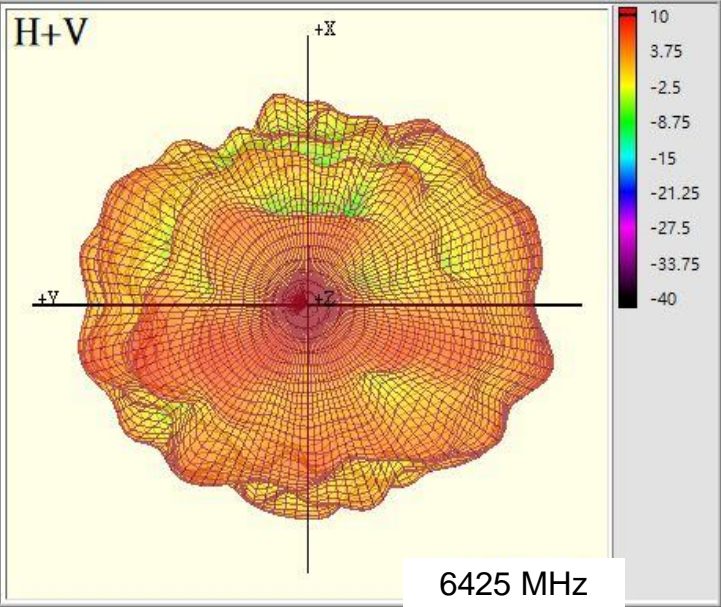


Y-Z

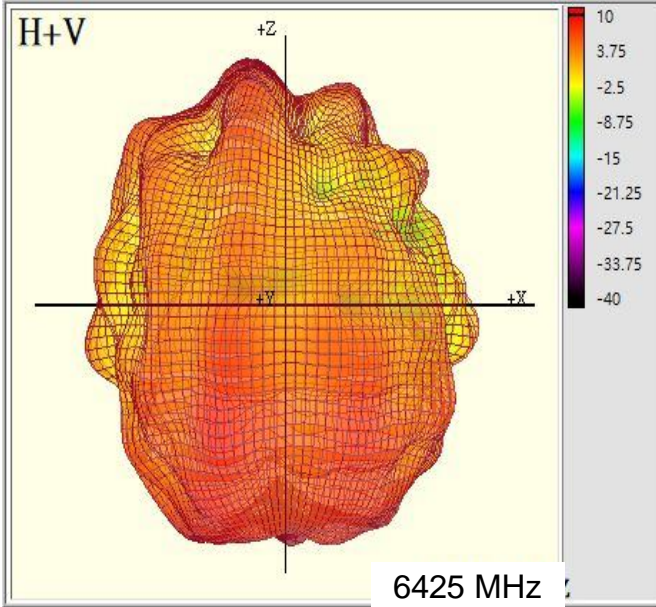


Radiation characteristics of antenna loaded in Host Platform @ 6425MHz:

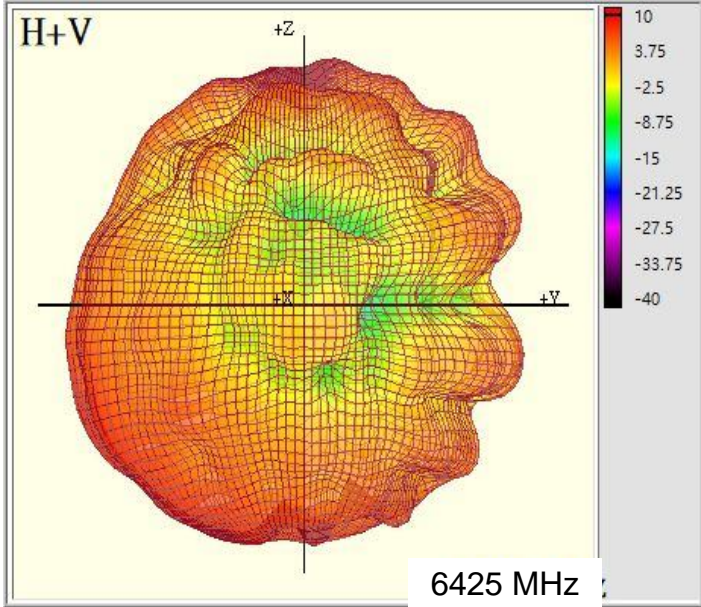
i ALP6Y-100007(WiFi 2)



X-Y



X-Z

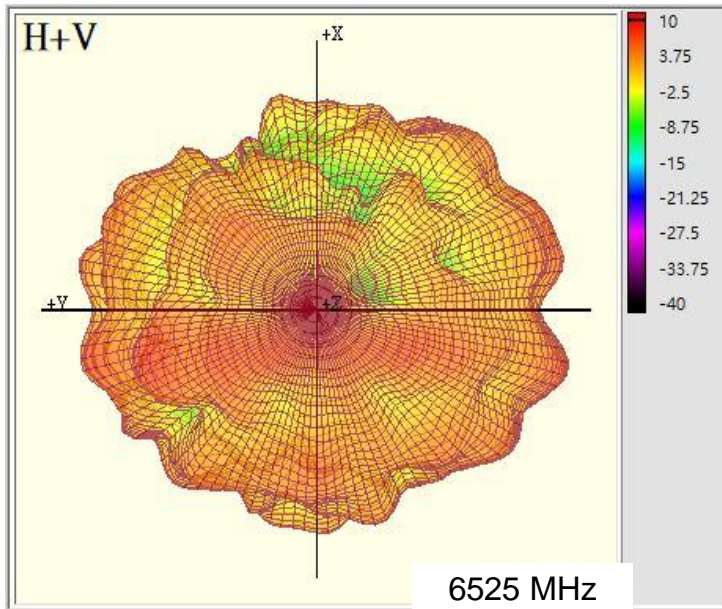


Y-Z

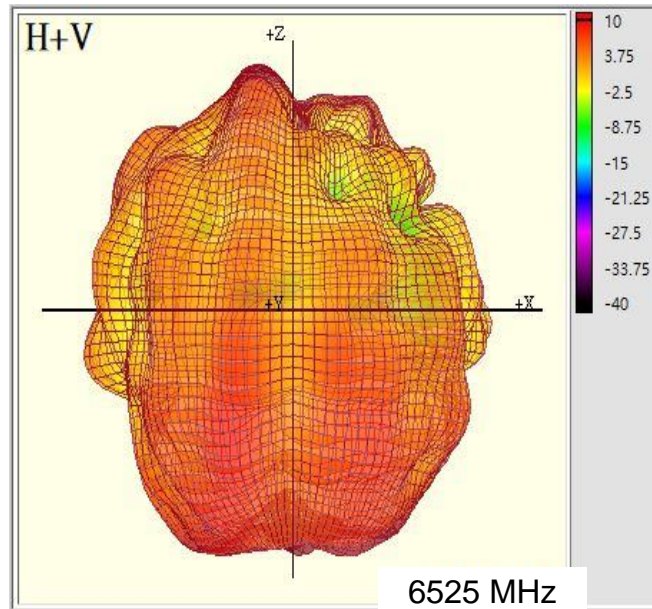


Radiation characteristics of antenna loaded in Host Platform @ 6525MHz:

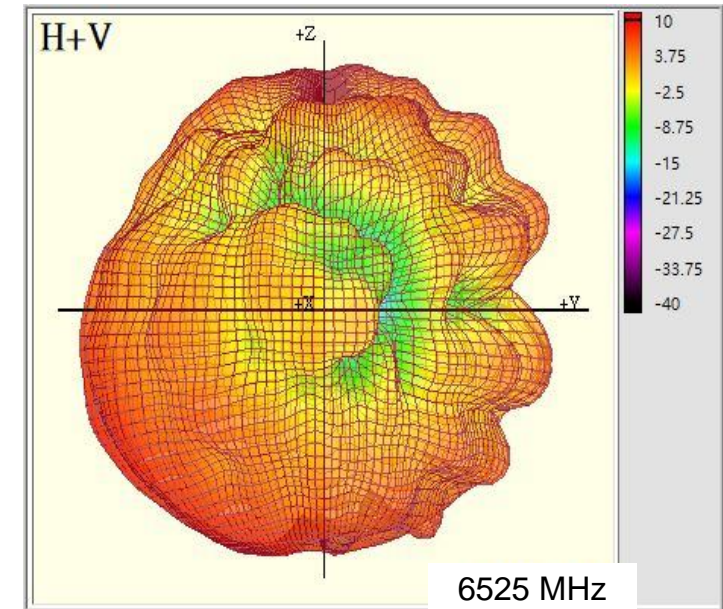
i ALP6Y-100007(WiFi 2)



X-Y



X-Z

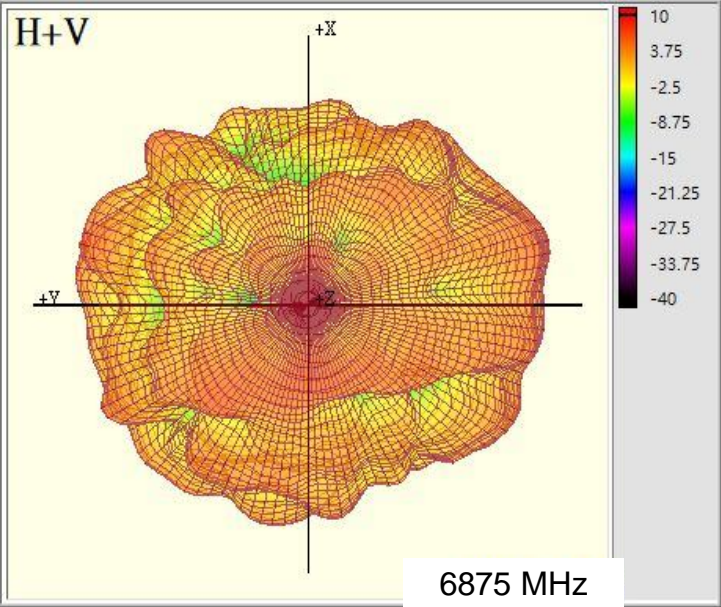


Y-Z

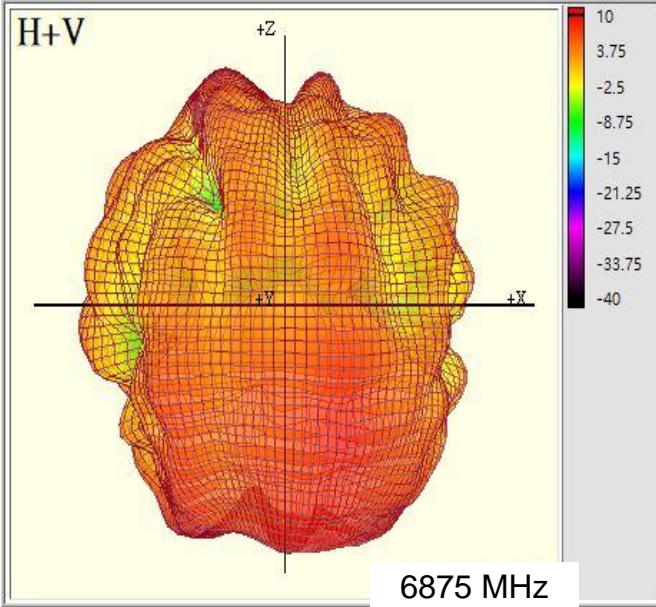


Radiation characteristics of antenna loaded in Host Platform @ 6875MHz:

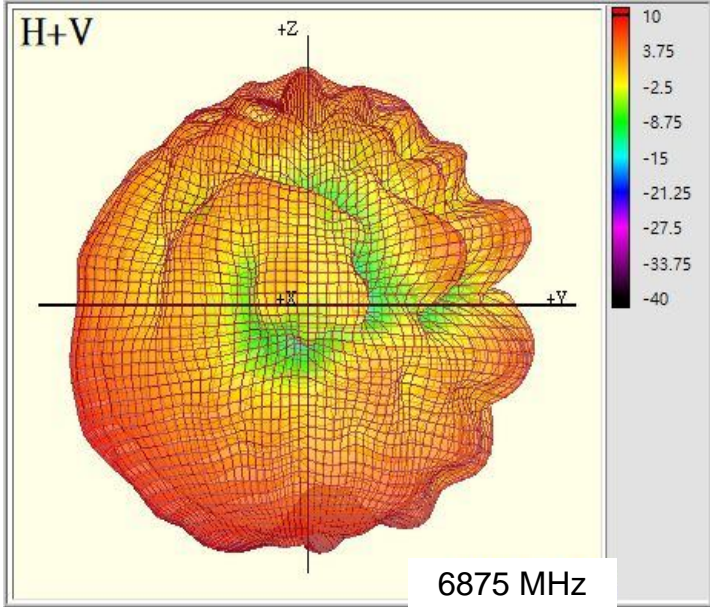
i ALP6Y-100007(WiFi 2)



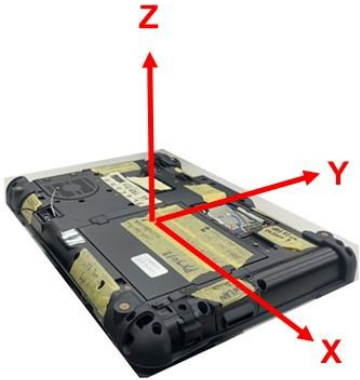
X-Y



X-Z

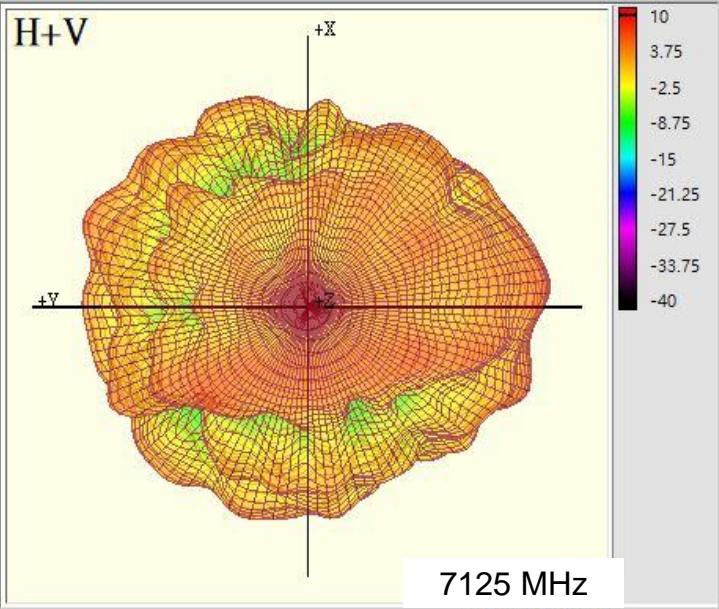


Y-Z

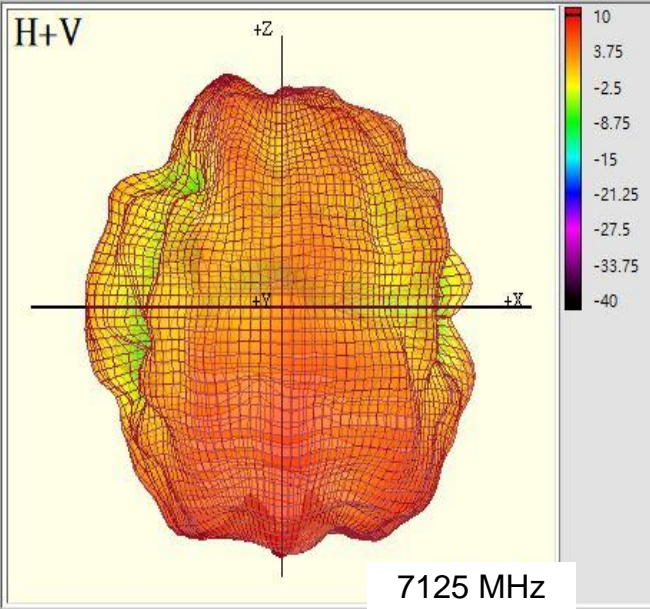


Radiation characteristics of antenna loaded in Host Platform @ 7125MHz:

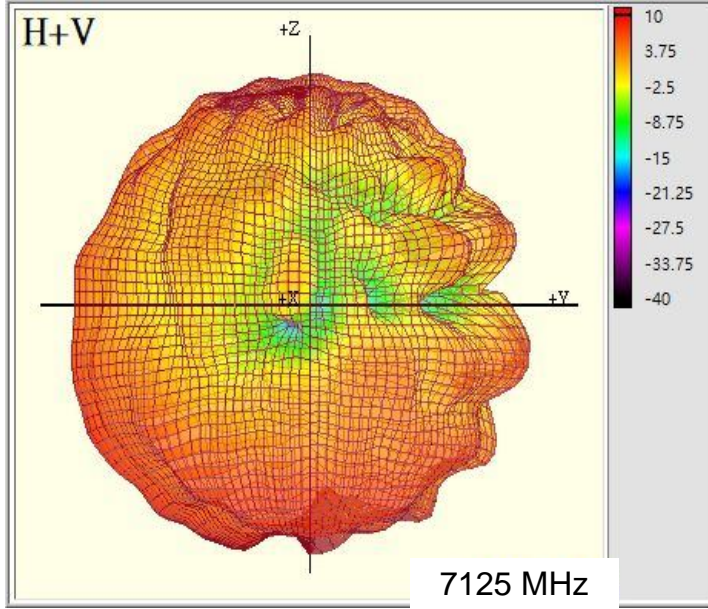
i ALP6Y-100007(WiFi 2)



X-Y



X-Z



Y-Z

