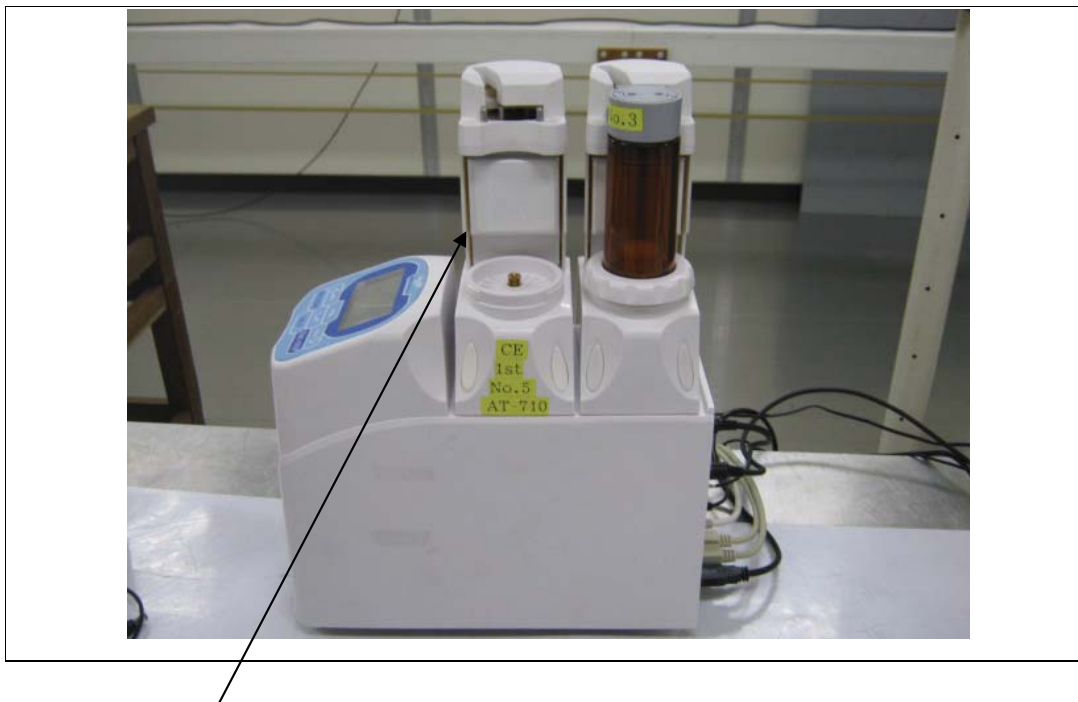


Integration guide for Kyoto Electronics Manufacturing Co., Ltd Burette Unit, model EBU

Right side appearance Buret Unit is assembled in representative model “AT-710”.



Location of RFID P.W.B

This module is for use in Kyoto Electronics Manufacturing Co., Ltd Burette Unit.

CAUTION — Changes or modifications not expressly approved by the party responsible for compliance could void the user’s authority to operate the equipment.

This device complies with Part 15 of the FCC Rules. Operation is subject to the following two conditions: (1) this device may not cause harmful interference, and (2) this device must accept any interference received, including interference that may cause undesired operation.

Burette Unit must be labeled with:

Contains FCC ID: 2ABSVEBU01