

Wireless Transfer Duty Cycle Control

Purpose

This document describes the procedure used, within software, to wirelessly transfer the data in question.

Background

The wireless data transfer utilizing the CCDB110 follows this procedure to transfer information wirelessly.

All duty cycle measurements taken by DLS were done with this data transfer procedure.

Procedure

A request is made by a remote device to transfer all data collected. The data is transferred from the controller, to the remote device, until all data has been successfully received by the remote device.

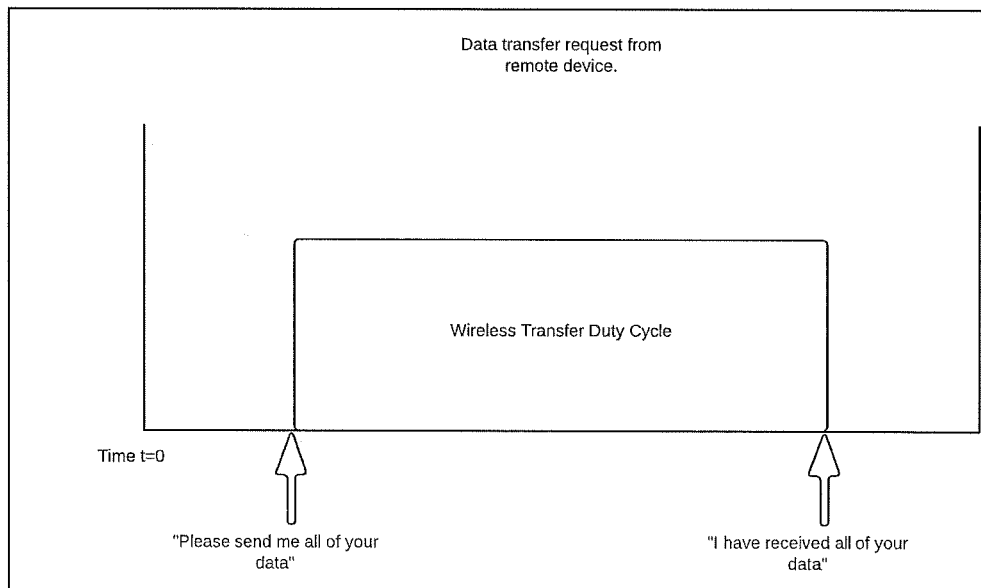


Figure 1: Diagram showing the duty cycle for wireless data transfer.

Discussion

The "Wireless Transfer Duty Cycle," shown in Figure 1, depicts the measurements that were made for source-based averaging by DLS Electronics.

Measurements were taken during the RF Exposure Compliance testing that took place at DLS Electronics. For the test, the maximum duty cycle was measured while transmitting a fixed amount of data (12,800 bits). This amount of data is a fixed payload that will never be exceeded.

Everett S. D'Luizio