

This system uses the front and rear microphones ① to detect engine booming noise. The system then automatically generates a noise cancelling sound through the speakers ② and woofer ③ to reduce engine booming noise.

The front and rear microphones ① are located inside of the roof.

The front speakers are located on the doors and the woofer is located in between the rear seats.

NOTE:

To operate the active noise control properly:

- Do not cover the speakers or woofer.
- Do not cover the microphones.
- Do not change or modify speakers including the woofer and any audio related parts such as the amplifier.
- Do not make any modification including sound deadening or modifications around the microphones, speakers or woofer.

NISSANCONNECT NISMO PLUS (if so equipped)

GUID-19A3CBFF-ECT0-4E71-9CE1-7DE46D64B83U

A variety of vehicle information can be recorded to a USB memory device during circuit driving and other driving. The data can be used to replay animated driving scenes with "Gran Turismo 6" software for Playstation 3.

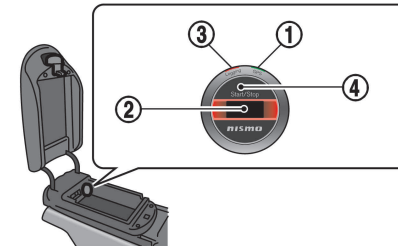
Moreover, by connecting a smartphone to your vehicle via Bluetooth® connection, and using the exclusive smartphone application, driving information can be displayed on a smartphone.

⚠ CAUTION

To set and operate NissanConnect Nismo Plus, check the surroundings for safety before or after driving, stop the vehicle in a safe place and then set and operate the system.

HOW TO RECORD TO A USB MEMORY DEVICE

GUID-ECFFCE45-F10A-4EBD-93A2-54563953E49A



JVS0454X

1. Start the engine and check that the indicator ① (green) is illuminating. The indicator ① (green) illuminates when GPS information is received.
When GPS information is not sufficiently acquired, the indicator ① (green) blinks. Accurate location information cannot be recorded under this condition.
2. Connect your USB memory device to the USB connection port ②.
The indicator ③ (orange) blinks.


- 3. Push the switch ④ to start measurement.
The indicator ③ (orange) illuminates.
- 4. Push the switch ④ to end measurement.
The indicator ③ (orange) blinks.
- 5. Remove the USB memory device and stop the engine.
Remove the USB memory device while the indicator ③ (orange) is blinking, and before stopping the engine.
If the device is not operated correctly, data may not be correctly recorded, and may become corrupted.

Indicator (orange):

Condition	Description
Blink	Measurement preparations complete
ON	Measurement in progress
2 blinks	<ul style="list-style-type: none">• USB memory device is not inserted.• USB memory is malfunctioning.
3 blinks	The storage capacity of the USB memory device is full and the vehicle information cannot be recorded.

Indicator (green):

Condition	Description
ON	Acquiring GPS position (receiving)
Blink	GPS positioning cannot be acquired.

 **CAUTION**

If wearing a seat belt and helmet for circuit driving, to operate switches and the USB device before or after driving, check the conditions of your surroundings, and then stop the vehicle in a safe place. Perform switch and USB device operation with the seat belt unfastened and with the helmet removed.



JVS0455X

NOTE:

- It may take a certain amount of time to receive GPS information. In addition, depending on the reception condition, your vehicle's position may not be displayed correctly.
- Do not place object on the rear parcel shelf because the GPS antenna is installed below the center of the rear parcel shelf ⑤. Doing so may result in driving data not being able to be recorded.

About USB memory devices

GUID-522C29B0-34E5-4606-8F02-9B46E9D32CC7

- A USB memory device is not included with the vehicle. Please purchase it separately.
- Use a USB 2.0 Hi-Speed or faster USB memory device. If a low-speed USB memory device is used, vehicle information cannot be recorded.
- Format your USB memory device to FAT32 format. USB memory devices formatted to a format other than FAT32 cannot record vehicle information.
- If recording continues for a long period of time (approximately 20 hours or more), the recording of vehicle information stops automatically. (Recording stops automatically)

Starting and driving 5-53

when the data file size reaches 2GB.)

- Do not put the USB memory device in a place where it may receive static electricity and electric noise, or where it may be exposed to the direct heat from a heater. The data may become corrupted.
- The USB port cannot charge a mobile device.

GETTING THE MOST OUT OF NISSANCONNECT NISMO PLUS

GUID-6391B089-D378-45C7-9B33-F6ECD5ED4D59

How to use the data recorded to the USB memory device

GUID-07169D97-AA78-440A-817B-C2FB29169790

Information on how to make the most of the services you can receive for the data recorded to the USB memory is introduced, and can be checked, at the following URL.

<http://www2.nissan.co.jp/GTR/nismo.html>

HOW TO USE THE EXCLUSIVE SMARTPHONE APPLICATION

GUID-F607BFC3-40D3-4DA2-AD08-796032D0D543

When you connect your smartphone and your vehicle via Bluetooth®, you can use the Nissan-Connect Nismo application.

How to initially register a smart-phone

GUID-3FD1B45E-75A3-4430-9B96-38FEE7BB6EF3

Perform initial registration in order to enable your mobile phone to connect with your vehicle via Bluetooth®.

1. Before starting the registration, turn on the Bluetooth® settings on your smartphone.
2. Push the ignition switch to ON position.
3. Within 20 seconds, lock/unlock the door using the door lock switch 10 times repeatedly.
☞ “Locking with power door lock switch” page 3-5
☞ “Push-button ignition switch” page 5-9
4. Within 30 seconds, search for Bluetooth® devices and then select and register “NissanConnect”.
5. When registration is complete, a message informing of completion is displayed.



INFO:

- A maximum of up to four smartphones can be registered. When a fifth smartphone is registered, the first registered smartphone will be removed from the system and the four most recent smartphones will remain regis-

tered.

- For details on how to operate your smartphone, see the Owner’s Manual of your smartphone.

How to use the application

GUID-C5CDB0C5-326B-4E15-94EA-38572D6266BF

Get into your vehicle and connect the vehicle and your smartphone via Bluetooth®.

A disclaimer is displayed when the application is started. Once you select “agree” you will be able to operate the application.

The operation procedure and display may vary depending on the type of smartphone.

⚠ WARNING

Where there is the possibility that a pacemaker or other electronic medical device could be affected, turn off the smartphone Bluetooth® settings.

⚠ CAUTION

During driving, some operations are limited in order to prevent distracting the driver. Do not gaze fixedly at the screen while driving.

NOTE:

- The Bluetooth® connection used with the NissanConnect Nismo application differs from the Bluetooth® connection functions used to connect the navigation system hands-free phone and the Bluetooth® audio.
- When there is a broadcasting station or other wireless device nearby, it may not be possible to connect normally.
- The Bluetooth® connection used when the NissanConnect Nismo application is used may not be recognized/connected automatically depending on the smartphone model. To use the application, first check that Bluetooth® is connected and then start the application.
- Some application services may be subject to change or termination without prior notice.
- To download the application, access the application store of each of your respective mobile communications service providers and download the application.
- If the smartphone is not connected correctly, you will not be able to use the NissanConnect Nismo application.

- For the details of each service and information about compatible smartphones, visit the following URL.
<http://www2.nissan.co.jp/GT-R/nismo.html>
- Nissan does not guarantee that the installation of the NissanConnect Nismo application will not cause the operation of other applications installed to your smartphone to malfunction.



Bluetooth® is a trademark owned by Bluetooth SIG, Inc., and licensed to Hitachi Automotive Systems, Ltd.

GRAN TURISMO 6: TM&© 2013 Sony Computer Entertainment Inc. Developed by Polyphony Digital Inc.

PlayStation®

"PlayStation" is registered trademarks or trademarks of Sony Computer Entertainment Inc.

"GRAN TURISMO" is registered trademarks of Sony Computer Entertainment Inc.

REGULATORY INFORMATION

GUID-6FACC2D9-AF1A-4884-94AE-BA2BE069DD25

FCC Regulatory information

GUID-A32D96CD-B6E8-4FE6-A0B5-EF7B9EF23A5A

CAUTION

- To maintain compliance with FCC's RF exposure guidelines, use only the supplied antenna.
- Unauthorized antenna, modification, or attachments could damage the transmitter and may violate FCC regulations.
- Operation is subject to the following two conditions:
 - 1) This device may not cause interference and
 - 2) This device must accept any interference, including interference that may cause undesired operation of the device

FCC ID: 2ABRDSIB01-001A

IC Regulatory information

GUID-7B0CD00C-38F6-4FCD-868A-C7BFE4961873

This device complies with Industry Canada licence-exempt RSS standard(s). Operation is subject to the following two conditions:

- 1) this device may not cause interference, and
- 2) this device must accept any interference, including interference that may cause undesired operation of the device.

Le présent appareil est conforme aux CNR

Starting and driving 5-55

d'Industrie Canada applicables aux appareils radio exempts de licence. L'exploitation est autorisée aux deux conditions suivantes:

- 1) l'appareil ne doit pas produire de brouillage, et
- 2) l'utilisateur de l'appareil doit accepter tout brouillage radioélectrique subi, même si le brouillage est susceptible d'en compromettre le fonctionnement.

CAUTION

- This equipment complies with radio frequency exposure limits set forth by the FCC and Industry Canada for an uncontrolled environment. This equipment should be installed and operated with a minimum distance of 20 cm between the device and the user or bystanders. This device must not be co-located or operating in conjunction with any other antenna or transmitter.

Cet équipement est conforme aux limites d'exposition aux radiofréquences définies par la FCC et Industrie Canada pour un environnement non contrôlé. Cet équipement doit être installé et utilisé avec un minimum de 20 cm de distance

entre le dispositif et l'utilisateur ou des tiers. Ce dispositif ne doit pas être utilisé à proximité d'une autre antenne ou d'un autre émetteur.

- **Under Industry Canada regulations, this radio transmitter may only operate using an antenna of a type and maximum (or lesser) gain approved for the transmitter by Industry Canada. To reduce potential radio interference to other users, the antenna type and its gain should be so chosen that the equivalent isotropically radiated power (e.i.r.p.) is not more than that necessary for successful communication.**

Conformément à la réglementation d'Industrie Canada, le présent émetteur radio peut fonctionner avec une antenne d'un type et d'un gain maximal (ou inférieur) approuvé pour l'émetteur par Industrie Canada. Dans le but de réduire les risques de brouillage radioélectrique à l'intention des autres utilisateurs, il faut choisir le type d'antenne et son gain de sorte que la puissance isotrope rayonnée

équivalente (p.i.r.e.) ne dépasse pas l'intensité nécessaire à l'établissement d'une communication satisfaisante.

IC: 11731A-SIB01001A