

SYLVANIA

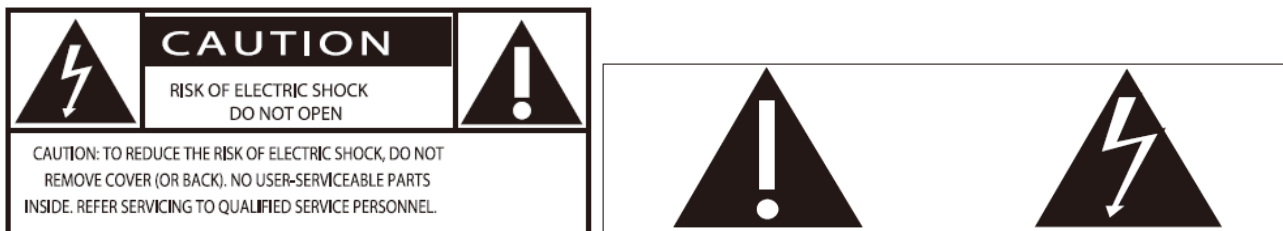
USB BLUETOOTH WIRELESS SPEAKER SP5686



User Manual

Safety

Know these safety symbols



- This 'bolt of lightning' indicates uninsulated material within your unit may cause an electrical shock. For the safety of everyone in your household, please do not remove product covering.
- The 'exclamation point' calls attention to features for which you should read the enclosed literature closely to prevent operating and maintenance problems.
- **WARNING:** To reduce the risk of fire or electric shock, this apparatus should not be exposed to rain or moisture and objects filled with liquids, such as vases, should not be placed on this apparatus.
- **CAUTION:** To prevent electric shock, match wide blade of plug to wide slot, fully insert.

Important Safety Instructions

- Read these instructions.
- Keep these instructions.
- Heed all warnings.
- Follow all instructions.
- Do not use this apparatus near water.
- Clean only with dry cloth.
- Do not block any ventilation openings. Install in accordance with the manufacturer's instructions.
- Do not install near any heat sources such as radiators, heat registers, stoves, or other apparatus (including amplifiers) that produce heat.
- Protect the power cord from being walked on or pinched, particularly at plugs, convenience receptacles, and the point where they exit from the apparatus.
- Only use attachments/accessories specified by the manufacturer.
- Use only with the cart, stand, tripod, bracket, or table specified by the manufacturer or sold with the apparatus. When a cart is used, use caution when moving the cart/apparatus combination to avoid injury from tip-over.



- Unplug this apparatus during lightning storms or when unused for long periods of time.
- Refer all servicing to qualified service personnel. Servicing is required when the apparatus has been damaged

in any way, such as power-supply cord or plug is damaged, liquid has been spilled or objects have fallen into the apparatus, the apparatus has been exposed to rain or moisture, does not operate normally, or has been dropped.

- Apparatus shall not be exposed to dripping or splashing.
- Do not place any sources of danger on the apparatus (e.g. liquid filled objects, lighted candles).
- Where the plug of the Direct Plug-in Adapter is used as the disconnect device, the disconnect device shall remain readily operable.
- Never remove the casing of this apparatus.
- Never lubricate any part of this apparatus.
- Never place this apparatus on other electrical equipment.

Notice

This equipment has been tested and found to comply with the limits for a Class B digital device, pursuant to part 15 of the FCC Rules. These limits are designed to provide reasonable protection against harmful interference in a residential installation. This equipment generates, uses, and can radiate radio frequency energy and, if not installed and used in accordance with the instruction manual, may cause harmful interference to radio communications.

However, there is no guarantee that interference will not occur in a particular installation. If this equipment does cause harmful interference to radio or television reception, which can be determined by turning the equipment off and on, the user is encouraged to try to correct the interference by one or more of the following measures:

- Relocate the receiving antenna.
- Increase the separation between equipment and receiver.
- Connect the equipment into an outlet on a circuit different from that to which the receiver is connected.
- Consult the dealer or an experienced radio/TV technician for help.

This device complies with part 15 of the FCC rules. Operation is subject to the following two conditions: (1) This device may not cause harmful interference, and (2) this device must accept any interference received, including interference that may cause undesired operation.

Note: Modifications to this product will void the user's authority to operate this equipment.



This symbol complies with the standards in force for this type of product.



Disposing of the appliance at the end of its life

This appliance bears the WEEE mark (Waste of Electric and Electronic Equipment) signifying that, at the end of its life cycle, it should not be disposed of with household waste, but at a recycling centre.

The recycling of waste contributes to the conservation of our environment.



Disposing of batteries at the end of their life

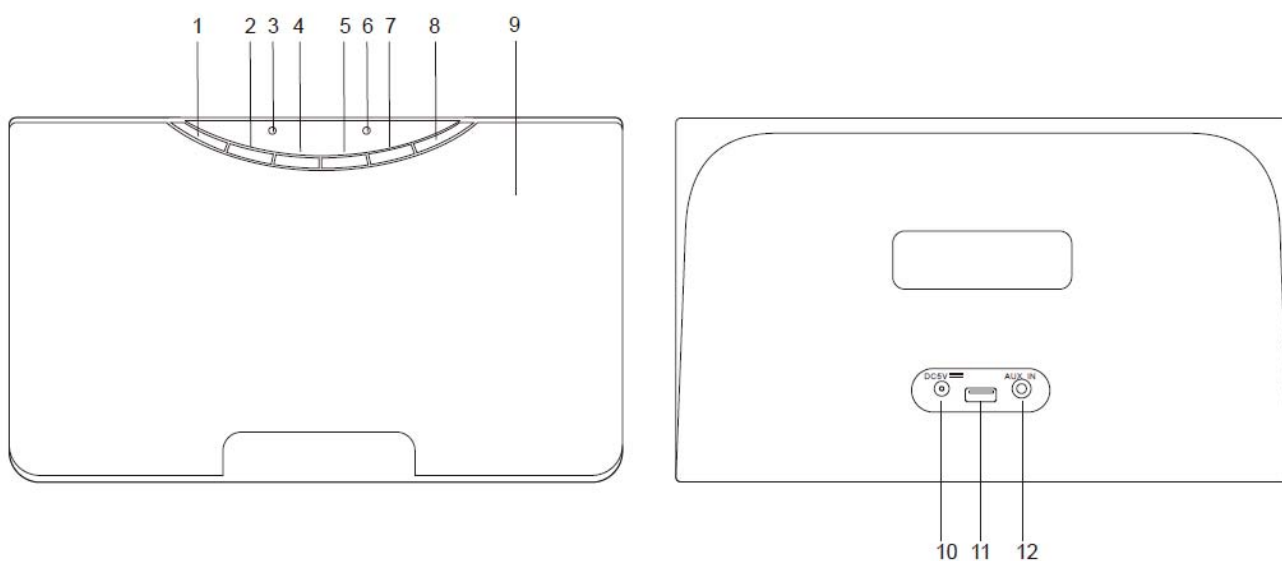
In order to respect the environment, do not throw used batteries out with household waste.

Dispose of them at your nearest recycling centre or at a used battery collection point.



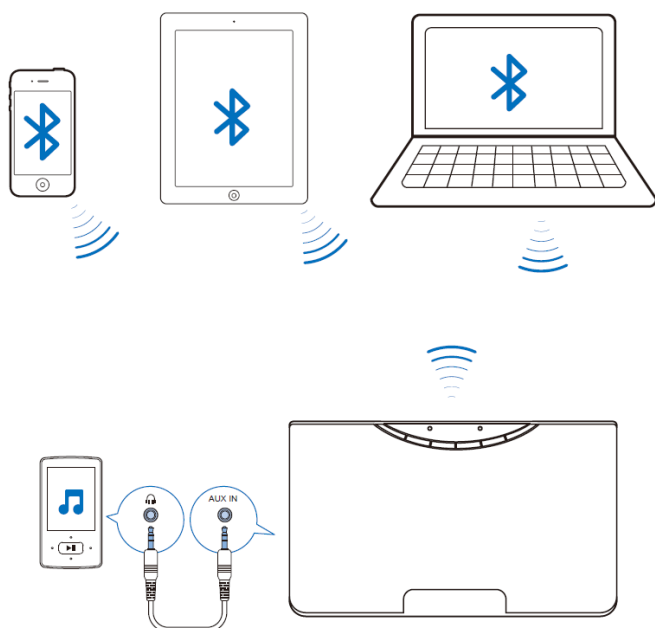
To prevent possible hearing damage, do not listen at high volume levels for long periods

DESCRIPTION OF PRODUCT



- 1, Standby
- 2, Functions
- 3, Standby LEDs
- 4, Backward / Volume –
- 5, Forward / Volume +
- 6, Connection status LED
- 7, Bass Enhance Switch
- 8, Pair / Play / Pause
- 9, Speaker
- 10, DC in
- 11, USB charge
- 12, Aux in

Switch on & Connect




Through Bluetooth, connect the SP5686 speaker with your Bluetooth device, such as an iPad, iPhone, Android phone, or laptop. You can also connect the speaker to an audio device through an Aux-in cable (not supplied).

MAINS POWER SUPPLY

Caution:

- Risk of damaging the product! Make sure that the input voltage corresponds to the voltage indicated on the device.
- Connect the mains adapter plug to the socket
- Connect the adapter to a plug socket

Switch on & Connect

1. Press  to switch on or off, then press PAIR
2. **Pairing with a device for the first time:** Blue light flashes fast
Connecting with a paired device: Blue light is on and a Beep sounds.
3. On your Bluetooth device, activate Bluetooth and search for SP5686.
For the first-time connection, select SP5686 to start pairing.
If necessary, enter the password.
4. Connected: Blue light flashes during playback

Play

After successful connection, start music play on the Bluetooth device.

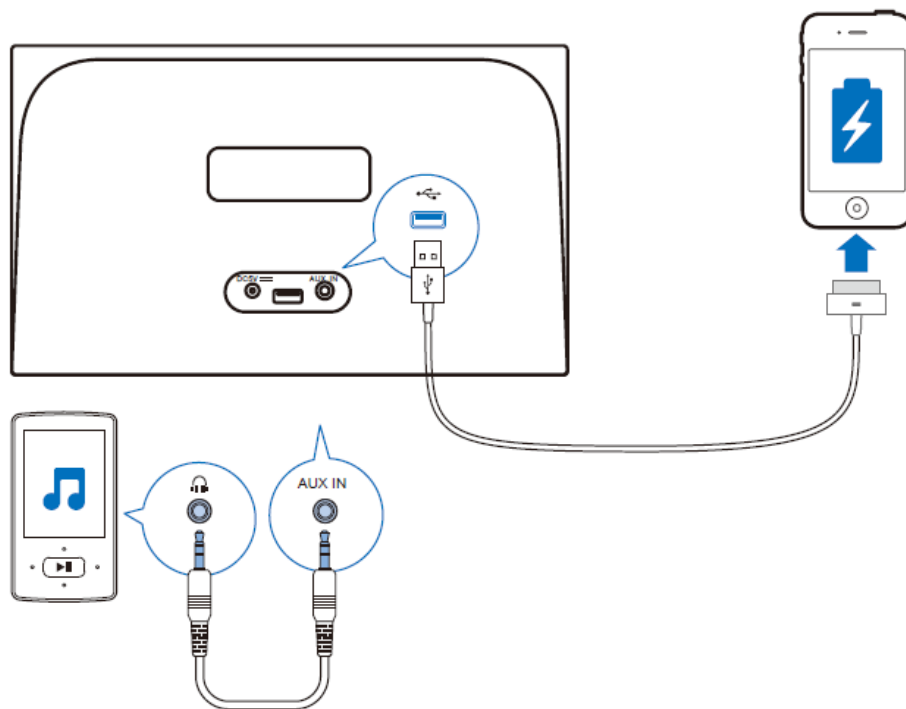
The music streaming may be interrupted by obstacles between the device and SP5686, such as walls, or other devices nearby that operate in the same frequency.

When music plays from the speaker through an Aux-in cable, increase the volume on the audio player if necessary.

Using the AUX-IN

The AUX-IN Connect input allows users to listen to an external audio source (MP3 player, Smartphone, portable CD player, etc):

- Plug a 3.5/3.5 mm audio cable (not included) into the AUX-IN Connect input on the back of the device, then into the headset input of an external auxiliary audio device.
- Press FUNCTION successively: to select AUX-IN mode.
- Play music from the external peripheral device.



Charge

The USB port provides up to 500 mA.

This allows you to load your mobile phones or tablets.

Specifications

Rated output power: 2 X 3W RMS (THD= 10%)

Bluetooth

Standard: Bluetooth Standard Version 2.1 + EDR

Frequency band: 2.402 ~ 2.480 GHz ISM Band

Range: 10 m (free space)

General information

AC power : Mains adapter: Input: 100-240V ~ 50/60Hz – 5V / 1500mA

Operation Power Consumption: <7 W

Charging : maximum 500 mA for USB

Dimensions : Main Unit (W x H x D): 287 x 165 x 110 mm

Weight : Main Unit: 1.0 kg