



Instruction Manual

CIL-E-6

Dual docking clock radio speaker



Some Dos And Don't On The Safe Use Of Equipment

This equipment has been designed and manufactured to meet international safety standards but, like any electrical equipment, care must be taken if you are to obtain the best results and safety is to be assured.

DO read the operating instructions before you attempt to use the equipment.

DO ensure that all electrical connections (including the mains plug, extension leads and interconnections between the pieces of equipment) are properly made and in accordance with the manufacturer's instructions. Switch off and withdraw the mains plug before making or changing connections.

DO consult your dealer if you are ever in doubt about the installation, operation or safety of your equipment.

DO route the mains lead so that it is not likely to be walked on, crushed, chafed, or subjected to excessive wear and tear or heat.

DON'T remove any fixed cover as this may expose dangerous voltages.

DON'T obstruct the ventilation openings of the equipment with items such as newspaper, tablecloths, curtains, etc. Overheating will cause damage and shorten the life of the equipment.

DON'T allow electrical equipment to be exposed to dripping or splashing, or objects filled with liquids, such as vases, to be placed on the equipment.

DON'T place hot object or naked flame sources such as lighted candles or night-lights on, or close to equipment. High temperatures can melt plastic and lead to fires.

DON'T use makeshift stands and **NEVER** fix legs with wood screws-to ensure complete safety always fit the manufacturer's approved stand or legs with the fixings provided according to the instructions.

DON'T use equipment such as personal stereos or radios so that you are distracted from the requirements of traffic safety. It is illegal to watch television whilst driving.

DON'T listen to headphones at high volume, as such use can permanently damage your hearing.

DON'T leave equipment switched on when it is unattended unless it is specifically stated that it is designed for unattended operation or has a stand-by mode. Switch off using the switch on the equipment and make sure that your family know how to do this. Special arrangements may need to be made for infirm or handicapped people.

DON'T continue to operate the equipment if you are in any doubt about it working normally, or if it is damaged in any way-switch off, withdraw the mains plug and consult your dealer.

ABOVE ALL,

- **NEVER** let anyone especially children push anything into holes, slots or any other opening in the case - this could result in a fatal electrical shock;
- **NEVER** guess or take chances with electrical equipment of any kind
- it is better to be safe than sorry!

To achieve the utmost in enjoyment and performance, please read this manual carefully before attempting to operate the unit in order to become familiar with its features, and assure you years of faithful, trouble free performance and listening pleasure.

Important Notes

- * Keep instructions: the safety and operating instructions should be retained for future reference.
- * Avoid installing the unit in locations described below:
Places exposed to direct sunlight or close to heat radiating appliances such as electric heaters. On top of other stereo equipment that radiate too much heat. Places lacking ventilation or dusty places. Places subject to constant vibration. Humid or moist places, the use of apparatus in moderate climates.
- * Make sure not to obstruct the ventilation openings.
- * Before turning on the power for the first time, make sure the power cord is properly installed.
- * Mains plug is used as the disconnect device and it shall remain readily operable.
- * The product shall not be exposed to dripping or splashing and that no objects filled with liquids, such as vases, shall be placed on the product.
- * To completely disconnect the power input, the mains plug of apparatus shall be disconnected from the main. Unplug the unit from the wall outlet before storms to prevent damage due to lightning and any power fluctuation.
- * When the standby LED and display are not illuminated; this indicates that the power switch is set to off or the set is disconnected from the mains.
- * Minimum distances 10cm around the apparatus for sufficient ventilations.
- * Attention should be drawn to the environmental aspects of battery disposal.
- * The mains plug should not be obstructed or should be easily accessed during intended use.
- * The ventilation should not be impeded by covering the ventilation openings with items such as newspaper, table-clothes, curtains etc.
- * No naked flame sources such as lighted candles should be placed on the apparatus.
- * Battery shall not be exposed to excessive heat such as sunshine, fire or the like.

For safety reasons, do not remove any covers or attempt to gain access to the inside of the product. Refer any servicing to qualified personnel.

Do not attempt to remove any screws, or open the casing of the unit; there are no user serviceable parts inside, refer all servicing to qualified service personnel.



CAUTION: TO REDUCE THE RISK OF ELECTRIC SHOCK DO NOT REMOVE COVER (OR BACK), NO USER SERVICEABLE PARTS INSIDE, REFER SERVICING TO QUALIFIED SERVICE PERSONNEL.

**DANGEROUS VOLTAGE**

There is high voltage, that may be of sufficient magnitude to constitute a risk of electric shock to persons is present within this product enclosure.

**ATTENTION**

The owner manual contains important operating and maintenance instructions, for your safety, it is necessary to refer to the manual.

WARNING: TO PREVENT FIRE OR SHOCK HAZARD, DO NOT EXPOSE THIS APPLIANCE TO DRIPPING OR SPLASHING.

Note:

- This unit will become warm when used for a long period of time. This is normal and does not indicate a problem with the unit.
- If unusual conditions occur in the display or buttons, switch the unit off then turn on the unit again.
- Under the influence of electrostatic phenomenon, the product may malfunction and require user to power reset.
- The marking plate is located on the bottom enclosure of the unit.

FCC

This equipment has been tested and found to comply with the limits for a Class B digital device, pursuant to Part 15 of the FCC Rules. These limits are designed to provide reasonable protection against harmful interference in a residential installation. This equipment generates uses and can radiate radio frequency energy and, if not installed and used in accordance with the instructions, may cause harmful interference to radio communications. However, there is no guarantee that interference will not occur in a particular installation. If this equipment does cause harmful interference to radio or television reception, which can be determined by turning the equipment off and on, the user is encouraged to try to correct the interference by one of the following measures:

- Reorient or relocate the receiving antenna.
- Increase the separation between the equipment and receiver.
- Connect the equipment into an outlet on a circuit different from that to which the receiver is connected.
- Consult the dealer or an experienced radio/TV technician for help.

This device complies with Part 15 of the FCC Rules. Operation is subject to the following two conditions: (1) This device may not cause harmful interference, and (2) this device must accept any interference received, including interference that may cause undesired operation.

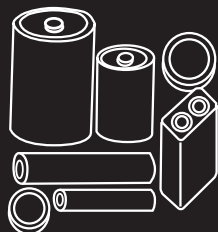
Any changes or modifications not expressly approved by the party responsible for compliance could void the user's authority to operate this equipment.

INDUSTRY CANADA

This device complies with Industry Canada licence-exempt RSS standard(s). Operation is subject to the following two conditions: (1) this device may not cause interference, and (2) this device must accept any interference, including interference that may cause undesired operation of the device.

Under Industry Canada regulations, this radio transmitter may only operate using an antenna of a type and maximum (or lesser) gain approved for the transmitter by Industry Canada. To reduce potential radio interference to other users, the antenna type and its gain should be so chosen that the equivalent isotropically radiated power (e.i.r.p.) is not more than that necessary for successful communication.

Battery Safety Guidelines



BATTERY SAFETY GUIDELINES

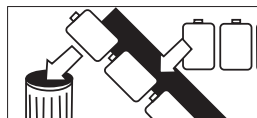
PLEASE PHOTOCOPY AND DISPLAY

Used correctly, domestic batteries are a safe and dependable source of portable power. Problems can occur if they are misused or abused — resulting in leakage or, in extreme cases, fire or explosion.

Here are some simple guidelines to safe battery use designed to eliminate any such problems.



Take care to fit your batteries correctly, observing the plus and minus marks on the battery and appliance. Incorrect fitting can cause leakage or, in extreme cases, fire or even an explosion.



Replace the whole set of batteries at one time, taking care not to mix old and new batteries or batteries of different types, since this can result in leakage or, in extreme cases, fire or even an explosion.



Store unused batteries in their packaging and away from metal objects which may cause a short-circuit resulting in leakage or, in extreme cases, fire or even an explosion.



Remove dead batteries from the unit and all batteries from the unit you know you are not going to use for a long time. Otherwise the batteries may leak and cause damage.



Never dispose of batteries in fire as this can cause them to explode. Please recycle dead batteries; do not put with the normal household waste.



Never attempt to recharge ordinary batteries, either in a charger or by applying heat to them. They may leak, cause fire or even explode. There are special rechargeable batteries which are clearly marked as such.



Supervise children if they are replacing batteries themselves in order to ensure these guidelines are followed.



Remember that small button cell batteries such as used in some hearing aids, toys, games and other appliances, are easily swallowed by young children and this can be dangerous.



Keep loose button cells away from young children.



Make sure battery compartments are secure.



Seek medical advice if you believe a cell has been swallowed.

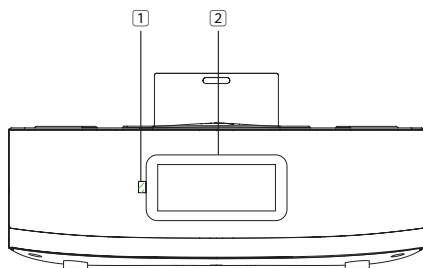
Table of Contents

Some Dos And Don't On The Safe Use Of Equipment	1
Important Notes.....	2
Battery Safety Guidelines	4
Product Overview	6
The Unit	6
Front View.....	6
Top View	6
Rear View	6
Remote Control Overview.....	7
Before use	8
Connect to an external device	8
Connect a USB storage device.....	8
Connect power.....	8
Get started.....	9
Turn on.....	9
Prepare the remote control	9
Remote control operation range	9
Set time and date.....	9
Play.....	10
Play from USB	10
Play from iPod/iPhone/iPad	10
Play from an external device	11
Play with Bluetooth device.....	12
Pairing bluetooth-enabled devices.....	12
Listen to music from Bluetooth device	12
Listen to radio	13
Tune to a radio station	13
Program radio stations automatically.....	13
Program radio stations manually	13
Select a preset radio station	13
Other features.....	14
Set the alarm timer	14
View the alarm settings.....	14
Activate / deactivate alarm timer.....	14
Snooze alarm.....	14
Stop alarm ring	14
Set the sleep timer.....	14
Adjust display brightness.....	14
Adjust sound.....	15
Adjust volume level.....	15
Mute sound	15
Select a preset sound effect	15
Troubleshooting.....	16
Product information	17

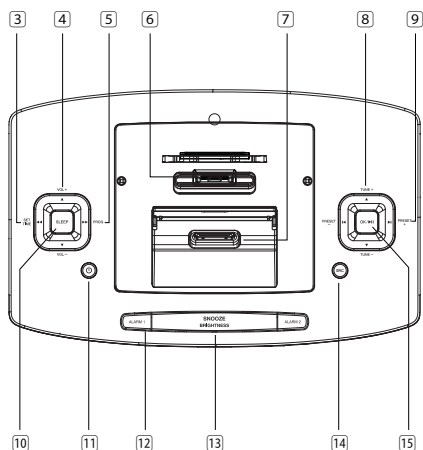
Product Overview

The Unit

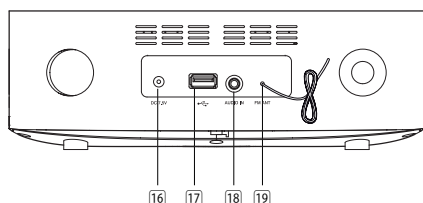
Front View



Top View



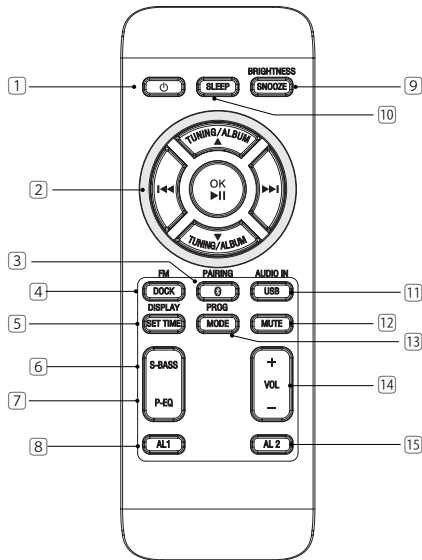
Rear View



1. IR sensor
 - Point the remote control at the IR sensor.
2. Display panel
 - Show the current status.
3. ◀◀ / SET TIME
 - Search within an audio file.
 - Set the clock and date.
4. VOL +/- ▲ / ▼
 - Adjust volume.
 - Scroll up/down.
5. ▶▶ / PROG
 - Search within an audio file.
 - Program radio stations.
6. Dock 2
 - Load an iPod/iPhone/iPad.
7. Dock 1
 - Load an iPod/iPhone.
8. TUNE + / ▲ / TUNE - / ▼
 - Tune to a radio station.
 - Scroll up/down.
9. ◀ / PRESET - / PRESET+ / ▶
 - Skip to the previous/next audio file.
 - Select a preset radio station.
10. SLEEP
 - Set the sleep timer.
11. ⏻ STANDBY
 - Turn on the unit or switch to standby mode.
12. Alarm1/Alarm2
 - Set the alarm timer.
 - Turn on/off the alarm tone.
 - View alarm settings.
13. SNOOZE/BRIGHTNESS
 - Repeat the alarm.
 - Adjust the display brightness.
14. SOURCE
 - Select a source: FM, USB, AUDIO IN, Bluetooth, DOCK 1 or DOCK 2
15. ▶ || / OK
 - Start or pause.
 - Select FM stereo or FM mono.
 - Confirm selection.
16. DC 7.5V
17. USB
18. AUDIO IN
 - Jack for an external audio device.
19. FM ANTENNA

Product Overview

Remote Control Overview



1. ⏻ STANDBY

- Turn on the unit or switch to standby mode.

2. OK/▶||

- Confirm selection.
- Start or pause.
- Select FM stereo or FM mono.
- TUNING/ALBUM ▲
- Tune to a radio station.
- Scroll up.
- Select a previous album folder.
- Adjust time.
- BT: Press and hold clear pairing mode.
- TUNING/ALBUM ▼
- Tune to a radio station.
- Scroll down.
- Select a next album folder.
- Adjust time.
- ⏮
- Skip to the previous audio file.
- Select a preset radio station.
- ⏭
- Skip to the next audio file.
- Select a preset radio station.

3. Bluetooth (📶) / PAIRING

- Select the Bluetooth source.
- Press and hold Clear the Bluetooth pairing history.

4. FM / DOCK

- Select the TUNER source.
- Select Dock 1 or Dock 2 source.

5. DISPLAY/SET TIME

- Display current information.

FM mode:

- Display RDS information

USB mode:

- Display ID3 information

- Set the clock and date.

6. S-BASS

- Turn on or off super bass enhancement.

7. P-EQ

- Select a preset equalizer setting.

8. AL 1

- Set the alarm timer.
- Turn on/off the alarm tone.
- View alarm settings.

9. SNOOZE/BRIGHTNESS

- Repeat the alarm.
- Adjust the display brightness.

10. SLEEP

- Set the sleep timer.
- Reset Bluetooth pairing.

11. AUDIO IN / USB

- Select AUDIO IN or USB source.

12. MUTE

- Mute volume.

13. PROG/MODE

FM mode:

- Program radio stations.
- Tune to a radio station.

USB mode:

- Select repeat play or random play.

14. VOL +/-

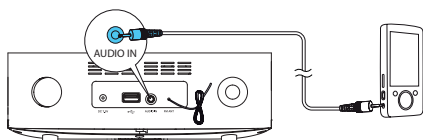
- Adjust volume.

15. AL 2

- Set the alarm timer.
- Turn off the alarm tone.
- View alarm settings.

Before use

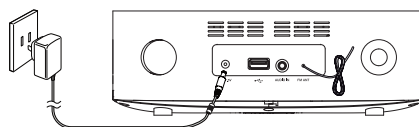
Connect to an external device



You can also listen to an external audio device through this unit.

1. Connect the audio cable to:
 - **AUDIO IN** jack
 - External device **AUDIO OUT** jack

Connect power

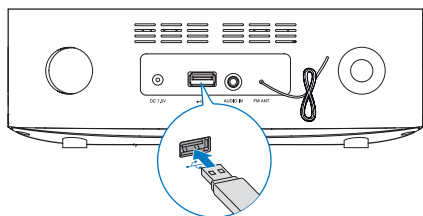


After you made all necessary connections, insert the AC/DC power plug into a wall outlet, and your unit ready to use.

Caution:

1. Be sure to unplug the mains plug from the mains socket when going out or when the unit is not in use for an extended period of time.

Connect a USB storage device



Insert the USB storage device.

Note: USB port is not support for charge the iPod/iPhone/iPad.

Get started

Turn on

Press **⏻ STANDBY**, the unit switches to the last selected source.

Switch to standby mode

Press **⏻ STANDBY** to switch the unit to standby mode, the clock (if set) appears on the display panel.

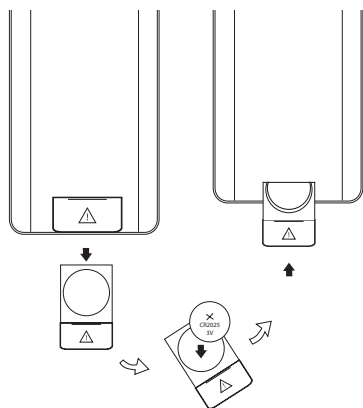
Prepare the remote control

For first-time use:

1. Remove the protective tab to activate the remote control battery.

To replace the remote control batteries:

1. Open the battery compartment.
2. Insert one lithium CR2025 battery with correct polarity (+/-) as indicated.
3. Close the battery compartment.

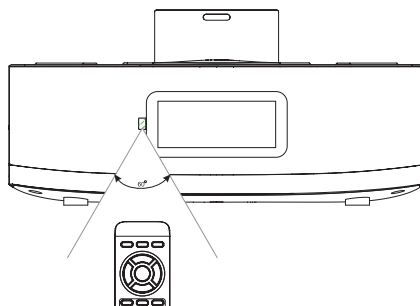


- * Be sure to insert the battery with the positive "+" and negative "-" polarities correctly positioned.
- * If the battery leaks, wipe away the leakage inside the battery compartment and replace the battery with a new one.
- * If the remote control unit is not to be used for a long time (more than a month), remove the battery from the remote control unit to prevent it from being exhausted.

- * Do not use any batteries other than those specified.
- * Do not heat or disassemble batteries. Never throw them in fire or water.
- * Do not carry or store batteries with other metallic objects. The batteries could short circuit, leak or explode.

Remote control operation range

1. Point the remote control towards the remote sensor IR of the front of the unit.
2. Make sure that there is no obstacle between the infrared remote sensor of the unit and remote control.



Set time and date

1. In standby mode, press and hold **SET TIME** button for 2 seconds, [12H] begins to blink.
2. Press **▲/▼** button on the top panel (or remote control) to select 12/24 hour format.
3. Press **OK** button to confirm, 00:00 will display, and the hour digits begin to blink.
4. Press **▲/▼** button on the top panel (or remote control) to select.
5. Repeat steps 3-4 to set the hour, minute, day, month and year.

Note:

1. In 12 hour format, [MONTH-DAY] is displayed.
2. In 24 hour format, [DAY-MONTH] is displayed.

Play

Play from USB

You can play MP3/WMA files copied on the USB storage device.

1. Select a USB storage device, press **USB** button.
2. Insert the USB storage device, the play starts automatically.

To select a specified file for play:

1. Press **ALBUM**▲/▼ button to select a folder, and then press **OK** button to confirm.
 - To pause or resume play, press ►|| button.
 - To skip to the previous/next file, press ◀◀ / ▶▶ button.

Select repeat/shuffle play options:

1. During play, press **MODE** button repeatedly to select a play option: repeat one, repeat all or random.
 - To resume normal play, press **MODE** button repeatedly until no option is displayed.

Note:

1. The USB port on the unit supports the USB honest mode of ISO device, you can enjoy audio from your IOS device via USB cable.
2. The USB port on the unit supports the AOA protocol technology of Android mobile phone. If the AOA protocol technology of Android mobile phone connect to the unit's USB port through cable, enjoy audio from your Android-powered device.
3. You can charge your phone at USB source via USB cable.

Play from iPod/iPhone/iPad

You can enjoy audio from iPod/iPhone/iPad through this unit.

Compatible iPod/iPhone/iPad

The integrated dual dock unit supports the following iPod,iPhone and iPad models:

Made for (Dock 2):

- iPod touch 5G
- iPod nano 7G
- iPad (4 generation)
- iPad mini
- iPhone 5
- iPhone 5C
- iPhone 5S

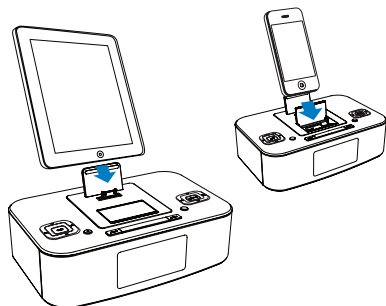
Also made for (Dock 1):

- iPod touch (1st, 2nd, 3rd, and 4th generation)
- iPod nano (2nd, 3rd, 4th 5th, and 6th generation)
- iPhone
- iPhone 3G
- iPhone 3GS
- iPhone 4
- iPhone 4S

Play

Listen to the iPod/iPhone/iPad

1. Press **DOCK** button to select dock source.
2. Place the iPod/iPhone/iPad into the dock.



- To pause/resume play, press ►||.
- To skip to a track, press ◀◀ / ▶▶.
- To search during play, press and hold ◀◀ / ▶▶ on the top panel (or press and hold ◀◀ / ▶▶ on the remote control), then release to resume normal play.

Charge the iPod/iPhone/iPad


When the unit is connected to power, the docked iPod/iPhone/iPad begins to charge.

Note:

- * For certain iPod models are not compatible with dock charging.
- * For certain iPod models, it may take up to a minute before the charging indication appears.
- * When iPod/iPhone/iPad is connected, select the device to corresponding dock source, the clock radio synchronizes time from the iPod/iPhone/iPad automatically.

Play from an external device

You can also listen to an external audio device through this unit.

1. Press **AUDIO IN** button to select the source,  is displayed.
2. Connect the cable to:
 - **AUDIO IN** jack
 - the **AUDIO OUT** jack on an external device
3. Start to play the device (see the device user manual).

Play with Bluetooth device

With this unit, you can listen to audio files from a player if bluetooth connection is available.

Pairing bluetooth-enabled devices

To connect your Bluetooth device to the unit, you need to pair the device to the unit. Pairing needs only to be done once.

Note:

- * The operational range between this unit and a Bluetooth device is approximately 10 meters.
- * Before you connect a Bluetooth device to this unit, familiarize yourself with the Bluetooth capabilities of the device.
- * Compatibility with all Bluetooth devices is not guaranteed.
- * Any obstacle between this unit and a Bluetooth device can reduce the operational range.
- * Keep this unit away from any other electronic device that may cause interference.

1. Turn on the Bluetooth function on your device.
2. Search for other Bluetooth device with your device.
3. Select "CIL-E-6" in the pairing list.
4. Enter default password "0000" if necessary.
5. Press and hold Pairing Cleared button (**PAIRING**) more than 2 seconds to clear pairing mode.

Note:

- * The device will also be disconnected then the device is moved beyond the operation range.
- * If you want to reconnect the device to the unit, place it within the operational range.
- * The device will be connected the Bluetooth device pairing already, and also enter pairing mode, other Bluetooth device can be searching for connecting or pairing.
- * When the unit disconnected the Bluetooth device, it will enter pairing mode automatically, other Bluetooth device can be searching for connection or pairing.

Listen to music from Bluetooth device

If the connected Bluetooth device supports Advanced Audio Distribution Profile (A2DP), you can listen to the music stored on the device through the unit.

1. Pair the device with the unit.
2. Start play music via device.

Listen to radio

Note:

- * Only **FM** radio reception is available on this unit.

Tune to a radio station

Note:

- * Position the antenna as far as possible from TV, VCR or other radiation source.
 - * For optimal reception, fully extend and adjust the position of the antenna.
1. Press **FM** (or **SOURCE** on the top panel) to select FM tuner.
 2. Press and hold **TUNE - / +** button on the top panel (or press **TUNING ▲ / ▼** button on the remote control) for more than 2 seconds, the radio tunes to a station with strong reception automatically.
 3. Repeat step 2 to tune to more stations, to tune to a weak station, press **TUNE - / +** button on the top panel (or press **TUNING ▲ / ▼** button on the remote control) repeatedly until you find optimal reception.

Note:

- * [STEREO] is the default setting for tuner mode.
- * In tuner mode, you can press **OK** button repeatedly to toggle between [STEREO] and [MONO], and the unit memorizes your setting even if you turn off the unit or turn to other sources.

Program radio stations automatically

You can program a maximum of 20 preset radio stations.

In tuner mode, press a hold **MODE** (or **PROG** on the top panel) on for 2 seconds to activate automatic program mode. [AUTO] is display, the unit automatically stores radio stations with sufficient signal strength, the first programmed radio station is broadcast automatically.

Program radio stations manually

You can program a maximum of 20 preset radio stations.

1. Tune to a radio station.
2. Press **PROG** button to activate the program mode.
3. Press **◀ / ▶** (or press **◀◀ / ▶▶** button on the remote control) to select a number.
4. Press **OK** button to confirm.
5. Repeat the above steps to program other stations.

Note:

- * To over write a programmed station, store another station in its place.
- * To select FM stereo or FM mono, press **OK**.

Select a preset radio station

In tuner mode, press **◀ / ▶** on the top panel (or press **◀◀ / ▶▶** on the remote control) to select a preset number.

Other features

Set the alarm timer

You can set two alarms which go off at different time.

1. Press and hold **ALARM 1** or **ALARM 2** button. The hour digits begin to blink, [ALM SET], [🕒 1] or [🕒 2] flashes on the screen.
2. Press ▲/▼ button repeatedly to set the hour.
3. Press **OK** button to confirm, the minute digits begin to blink, [🕒 1] or [🕒 2] flashes on the screen.
4. Repeat steps 2-3 to set the minute, select when to ring alarm, and choose alarm sound source and alarm volume.

Note:

- * If you select DOCK 1/DOCK 2, USB as alarm sound source, when there is no device docked, the alarm will automatically switch to buzzer to ring the alarm.
- * If both alarms are set to the same time, only Alarm 1 will ring.

View the alarm settings

Press **ALARM1** or **ALARM2** to view alarm settings.

Activate / deactivate alarm timer

When an alarm setting is shown on the screen, press **AL 1** or **AL 2** repeatedly to activate or deactivate the alarm timer.

- If the timer is activated, [🕒 1] or [🕒 2] is displayed.
- If the timer is deactivated, [🕒 1] or [🕒 2] is disappears.

Snooze alarm

When alarm sounds, press **SNOOZE**, the alarm snoozes and repeats ringing 9 minutes later.

Stop alarm ring

When an alarm rings, press the corresponding **STANDBY**, **SOURCE**, **ALARM 1** or **ALARM 2**. The alarm stops but the alarm settings remain.

Set the sleep timer

This clock radio can switch to standby mode automatically after a preset period.

- * Press **SLEEP** repeatedly to select the sleep timer period (in minutes), when the sleep timer is activated, **SLEEP** appears.
- * To deactivate the sleep timer, press **SLEEP** repeatedly until **[OFF]** (off) appears.

Adjust display brightness

Press **BRIGHTNESS** button repeatedly to select different levels of display brightness.

Adjust sound

Adjust volume level

During play, press **VOL+/-** button to increase/decrease the volume level.

Mute sound

During play, press **MUTE** button to mute/unmute sound.

Select a preset sound effect

During play, press **P-EQ** button repeatedly to select:

- [ROCK]
- [JAZZ]
- [POP]
- [CLASSIC]
- [FLAT]

Note:

You can also press the **SET TIME** button on the top panel repeatedly to select.

Troubleshooting

If you are having a problem with your system, check this list for a possible solution before calling for service. If you cannot solve the problem from the list below, or the system has been physically damaged, call a qualified person, or your dealer, for service.

No power

- Ensure that the AC power plug of the unit is connected properly.
- Ensure that there is power at the AC outlet.

No sound

- Adjust the volume.

Poor radio reception

- Increase the distance between the unit and your TV or VCR.
- Fully extend the FM antenna.

Timer does not work

- Set the clock correctly.
- Switch on the timer.

Clock/timer setting erased

- Power has been interrupted or the power plug has been disconnected.
- Reset the clock/timer.

About Bluetooth device

Music playback is unavailable on the system even after successful Bluetooth connection.

- The device cannot be used with the system to play music.

The audio quality is poor after connection with a Bluetooth-enabled device.


- The Bluetooth reception is poor. Move the device closer to the system or remove any obstacle between the device and the system.

Cannot connect with the system.

- The device does not support the profiles required for the system.
- The Bluetooth function of the device is not enabled. Refer to the user manual of the device for how to enable the function.
- The system is not in the pairing mode.
- The system is already connected with another Bluetooth-enabled device. Disconnect that device or all other connected devices and then try again.
- Press and hold the **PAIRING** button to reset Bluetooth function of this system then try again.

Product information

General information

AC power.....	100-240V ~ 50/60Hz
Output.....	7.5V  3.5A
Frequency Response	100Hz ~ 20KHz
Signal to Noise Ratio.....	> 70 dB
Audio Input	600 mv
Operation Power Consumption	5 x 2 W RMS
Standby Power Consumption (clock display)	≤ 0.5W
Dimensions.....	221(W)×130(H)×138(D)mm

FM

FM Tuning Range.....	87.5 - 108 MHz
----------------------	----------------

Speakers

Speakers Impedance.....	4Ω
-------------------------	----

Bluetooth

Communication system	Bluetooth Standard version 2.1 and EDR specification
Output.....	Bluetooth Standard Power Class 2
Maximum communication Range	approx. 10m
Frequency band.....	2.4 GHz Band (2.4000 GHz - 2.4835 GHz)
Compatible Bluetooth profiles.....	Advanced Audio Distribution Profile (A2DP)
Supported Multi devices pairing	up to 8 devices
Supported codecs (Receive).....	SBC(Sub Band Codec)
(Transmit).....	SBC(Sub Band Codec)

Remote Control

Distance.....	6m
Angle	±30°

Accessories

AC adapter (plug switchable)	1
Remote control (with a battery)	1
User manual	1
Declaration of conformity.....	1

Note: Product information is subject to change without prior notice.