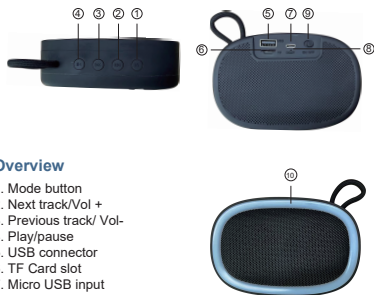


55mm

USER MANUAL



Overview

1. Mode button
2. Next track/Vol +
3. Previous track/ Vol-
4. Play/pause
5. USB connector
6. TF Card slot
7. Micro USB input
8. Charging LED indicator
9. RGB Switch
10. RGB light

Specifications:

1. Model: CT02078
2. Item: O270
3. Output Power : 3W
4. Input: DC 5V / 500mA
5. Battery capacity: 3.7V/400mAh 1.48Wh
6. Charging time: 2 hours
7. Play time : 2 hours

Operation Instructions

1. **Power On:** Slide the power switch to turn ON the speaker.
2. **Pairing:** Once speaker is turned on, using your mobile device, search for Bluetooth devices and select Bluetooth ID 'O270'. It will pair automatically.
3. **Power Off:** Slide the power switch to turn Off the speaker.
4. **Play/Pause:** When listening to music, press once the button to pause/play music.

MADE IN CHINA

5. **Next track/Vol+:** Short press to next track, long press to increase volume.
6. **Previous track/Vol -:** Short press to last track, long press to decrease volume.
7. **RGB light:** Long press Mode button to turn ON/OFF RGB light
8. **TF card:** It will automatically play music when TF card is inserted.
9. **USB flash disk:** It will automatically play music when USB disk is inserted.
10. **Charging:** Use the USB cable included to connect the speaker to a computer or adaptor, the LED indicator will display a solid red light. When the speaker are fully charged, the red light will be turned off.

Attention:

1. Please enjoy music with an appropriate volume, to avoid damaging your hearing and sound system.
2. Avoid exposure to rain, water droplets, and prolonged exposure to high temperature or high humidity environment.
3. Keep away from heat, high pressure, and prevent children from playing with this product.
4. If the volume decreases or becomes distorted, this may indicate the lithium battery requires charging.
5. Only use power sources that are suitable for the specifications of this product.
6. Avoid damaging the product. Do not drop or apply pressure to the product.
7. Please do not disassemble the product to avoid injury.
8. If you are not using the product, please turn off the power and unplug the charger power cable.

FCC STATEMENT

This device complies with Part 15 of the FCC Rules. Operation is subject to the following two conditions:

- (1) This device may not cause harmful interference, and
- (2) This device must accept any interference received, including interference that may cause undesired operation.

Warning: Changes or modifications not expressly approved by the party responsible for compliance could void the user's authority to operate the equipment.

NOTE: This equipment has been tested and found to comply with the limits for a Class B digital device, pursuant to Part 15 of the FCC Rules. These limits are designed to provide reasonable protection against harmful interference in a residential installation.

This equipment generates uses and can radiate radio frequency energy and, if not installed and used in accordance with the instructions, may cause harmful interference to radio communications. However, there is no guarantee that interference will not occur in a particular installation. If this equipment does cause harmful interference to radio or television reception, which can be determined by turning the equipment off and on, the user is encouraged to try to correct the interference by one or more of the following measures:

- Reorient or relocate the receiving antenna.
- Increase the separation between the equipment and receiver.
- Connect the equipment into an outlet on a circuit different from that to which the receiver is connected.
- Consult the dealer or an experienced radio/TV technician for help.

RF Statement

The device has been evaluated to meet general RF exposure requirement.

The device can be used in portable exposure condition without restriction.