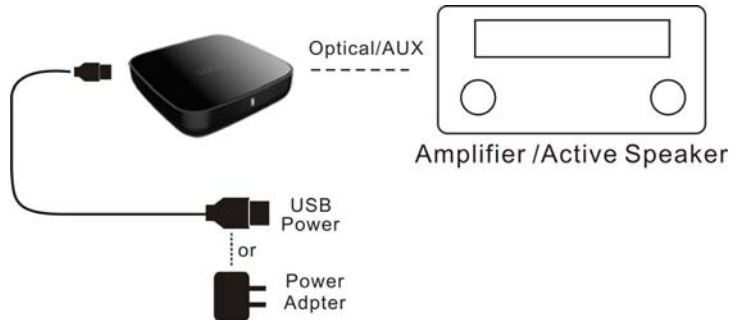


Quick Start Guide(WB-800)

This connector can upgrade HIFI system(Active speaker) to WIFI system.

Step 1: Getting Started

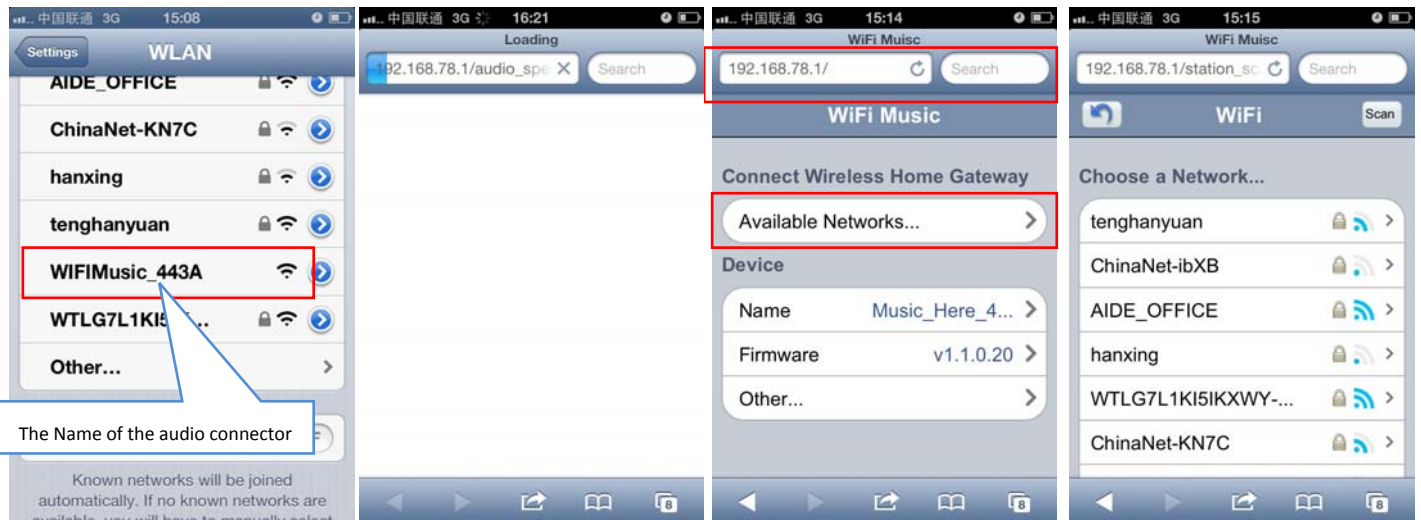
Plug it in



Light indicator

	Blue Light	Red Light
Flash	Ready for connection	Fail to connection
Lighting	Success to connection	NA

Step2: Hotspot connection and online connection



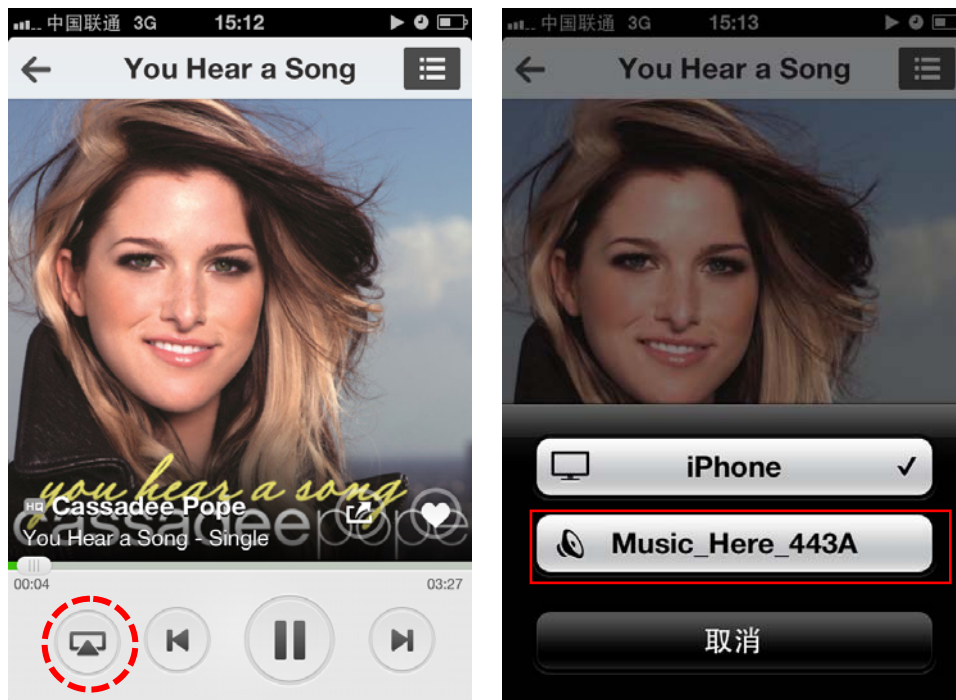
1. Connect your mobile device with the audio connector by WIFI setting. And then ,you can enjoy the local music.

2. Input the 192.168.78.1IP address, and setup the online connection.

3. Connect the WIFI connector to your home WIFI router step by step. And then, you can enjoy the online music.

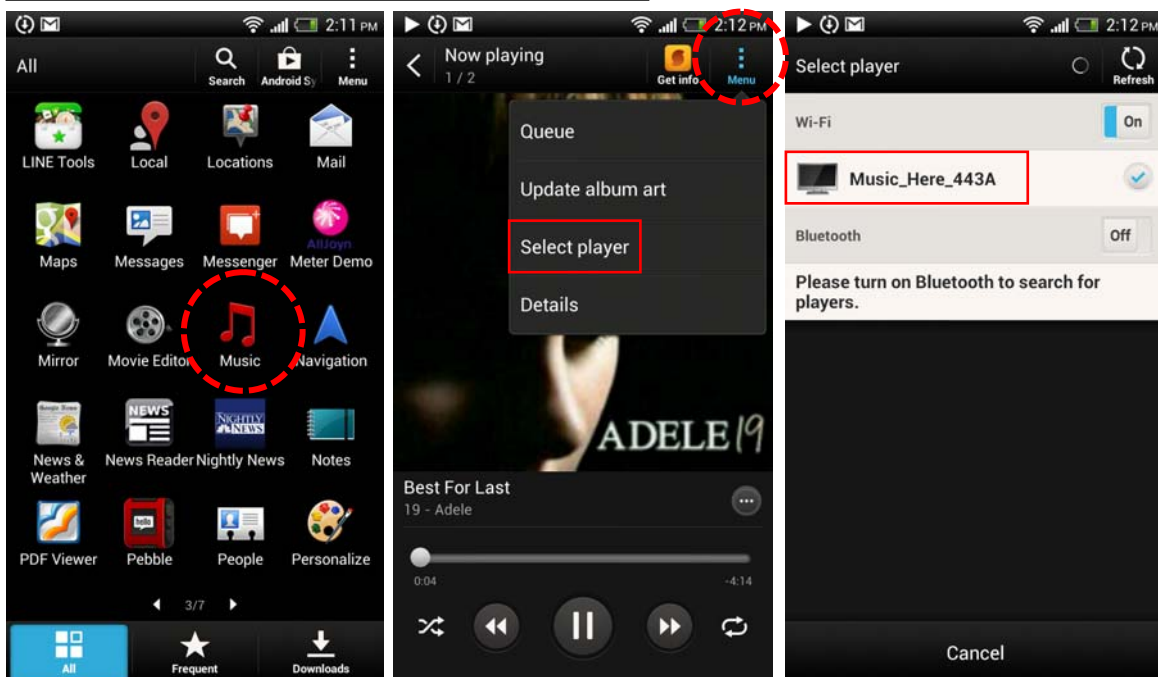
Step3: Connection(for IOS&android)

3.1 iOS (Local and on line playback)

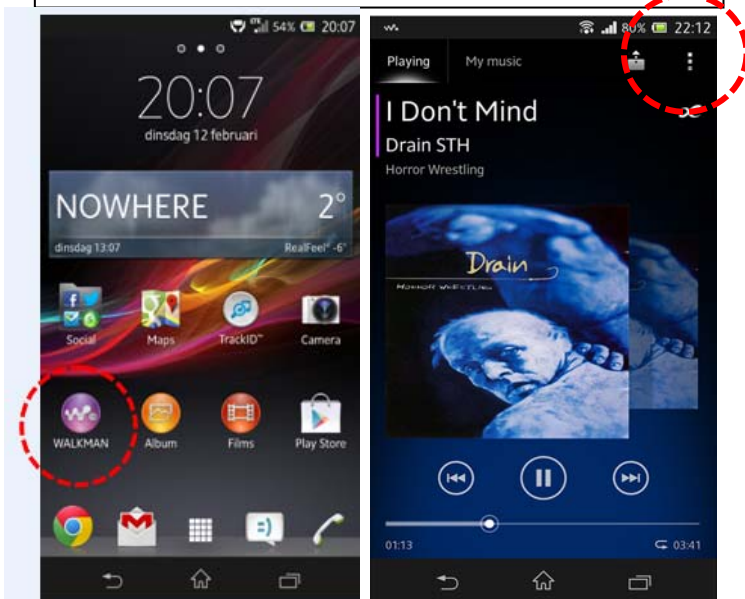


3.2 Android device(local contents playback)

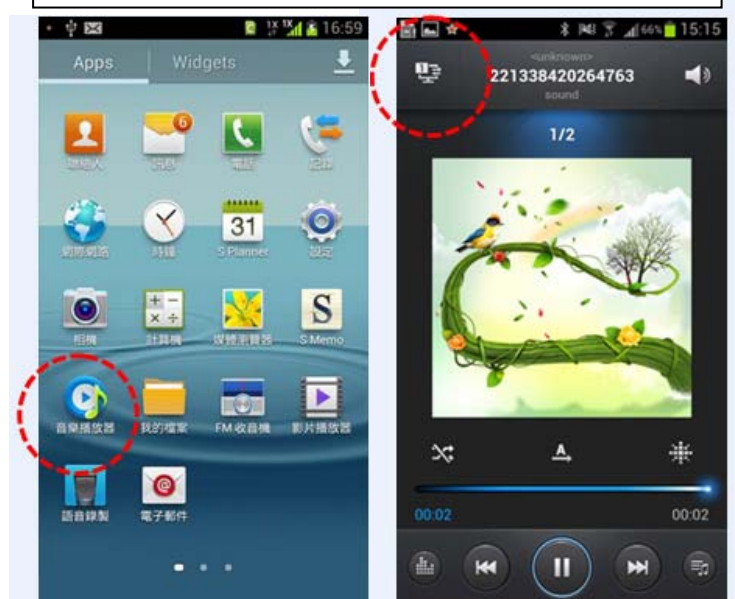
HTC Smartphone – OneX, M700, Desire, Butterfly



Sony smartphone – Xperia Serial

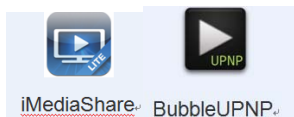


Samsung smartphone – Galaxy Serial



Note:

1. For other brand android mobile phone, please connect by the similar ways.
2. For the Android device, please remember to use music player supporting DLNA. There are two most popular media player supporting the DLNA:



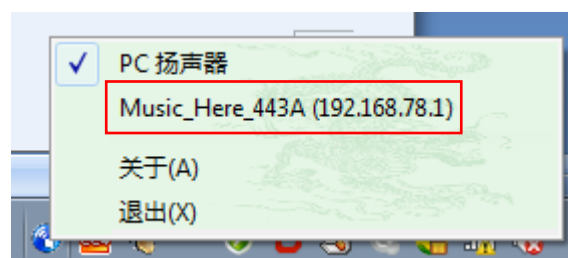
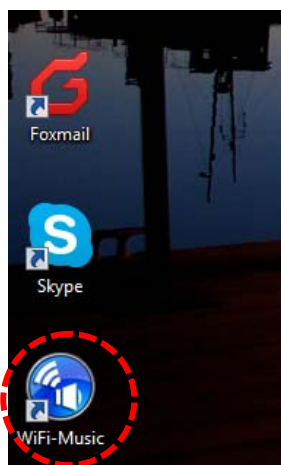
3.3: Android device (online contents playback)

Online playback, please use the music player supporting the DLNA, eg imediashare .



3.4 Windows PC by WiFiMusic Utility

- . Please download WiFi Music APP from Website <http://db.tt/GWVI2JX7>, then install on your Windows device.
(Support XP / Vista / 7 / 8)
- .The WiFi Music icon will appear on your desktop after installed the APP.
- . Power on the audio connector, and connect your PC with the WIFI audio connector by setting the WIFI.
- .Start the WIFI music APK,the WIFI Music icon will appear on the right bottom of the window. And the PC will automatically detect the available speaker.



The WiFi Music icon on the desk

Window PC connection with the audio connector

The list of the available speaker

- . Select the audio connector in the list of the available speaker.
- .And now you can enjoy the whole Windows Audio stored in the PC through the WiFi Audio Connector.
- . If you want to enjoy the online audio, pls set your PC by the following step.



1. Input the 192.168.78.1 IP address.

2. Connect the WIFI connector to your home WIFI router step by step.
And then, you can transmit the online audio.

Product Parameter

Support OS	<ul style="list-style-type: none">➤ IOS 5.0 or up➤ iTunes 10.1 or up➤ Android 4.0 or up➤ Windows XP/Vista/7/8
Audio Format	MP3, WAV, MMA, AAC, M4A, AIFF, Apple Lossless
WIFI	802.1 b/g/n
Operation Range	70 meters
Audio output	AUX/SPDIF(Optical)
S/N	89dB
THD+N	-85dBfs
Power	DC 5V /500mA

FCC Statement:

This device complies with part 15 of the FCC Rules. Operation is subject to the following two conditions: (1) This device may not cause harmful interference, and (2) this device must accept any interference received, including interference that may cause undesired operation.

This equipment has been tested and found to comply with the limits for a Class B digital device, pursuant to part 15 of the FCC Rules. These limits are designed to provide reasonable protection against harmful interference in a residential installation. This equipment generates, uses and can radiate radio frequency energy and, if not installed and used in accordance with the instructions, may cause harmful interference to radio communications. However, there is no guarantee that interference will not occur in a particular installation. If this equipment does cause harmful interference to radio or television reception, which can be determined by turning the equipment off and on, the user is encouraged to try to correct the interference by one or more of the following measures:

- Reorient or relocate the receiving antenna.
- Increase the separation between the equipment and receiver.
- Connect the equipment into an outlet on a circuit different from that to which the receiver is connected.
- Consult the dealer or an experienced radio/TV technician for help.

Caution: Any changes or modifications not expressly approved by the party responsible for compliance could void the user's authority to operate the equipment.

This equipment complies with FCC radiation exposure limits set forth for an uncontrolled environment.

This equipment should be installed and operated with minimum distance 20 cm between the radiator & your body.